



CONCEPT

The concept of this boutique hotel is inspired by the cultural identity of Fayoum, blending traditional Egyptian craftsmanship with a contemporary spatial language. The design aims to create a calm, authentic experience that reflects local heritage while offering modern comfort.

The interior design is based on geometric abstraction, specifically the rhombus form, which appears consistently throughout the project. This geometry is expressed in the furniture layout, mashrabiyyas, window patterns, and spatial organization, creating a strong visual identity and rhythmic flow within the space.

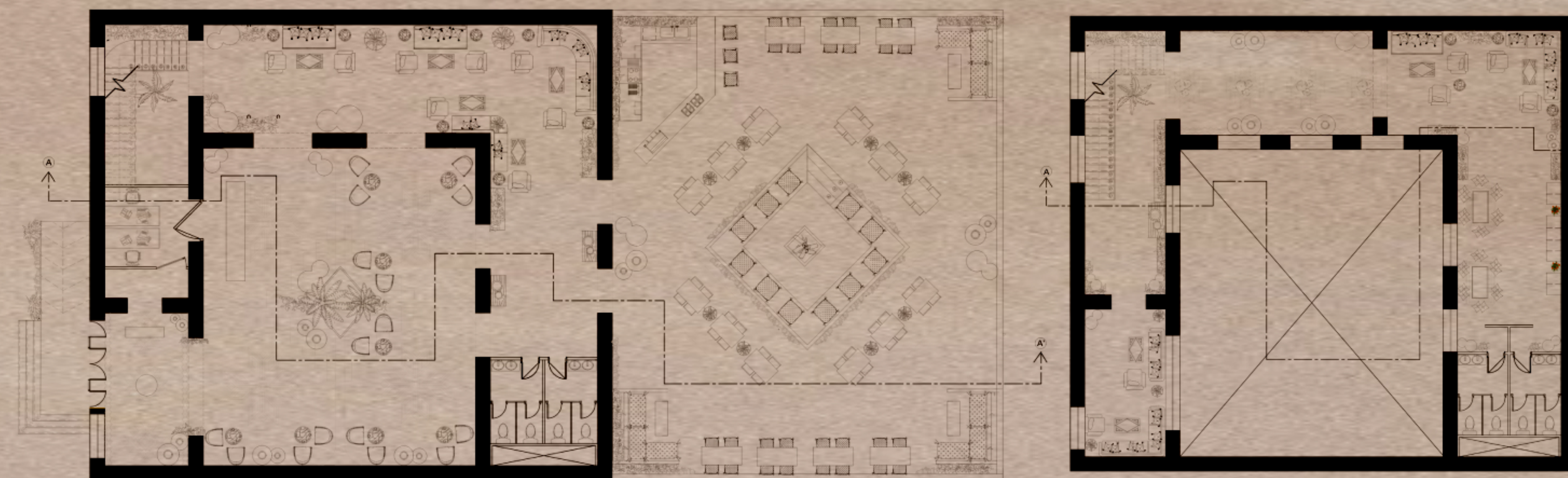
Traditional mashrabiyyas are reinterpreted in a modern way, using rhombus-shaped patterns that allow light and shadow to interact dynamically throughout the interior. The windows follow the same geometric logic, enhancing visual continuity while maintaining privacy and natural ventilation.

The furniture design is inspired by Arabesque patterns and crafted primarily from wood, reinforcing warmth and authenticity. Wooden linear ceiling elements run along the length of the space, emphasizing direction, movement, and harmony, while also adding texture and depth.

In the floor plan, the furniture arrangement is organized around a central rhombus-shaped composition, which acts as the focal point of the space. Surrounding seating alternates between straight angles (L-shape) and inclined angles (Z-shape), creating a dynamic yet balanced layout that encourages interaction and flow.

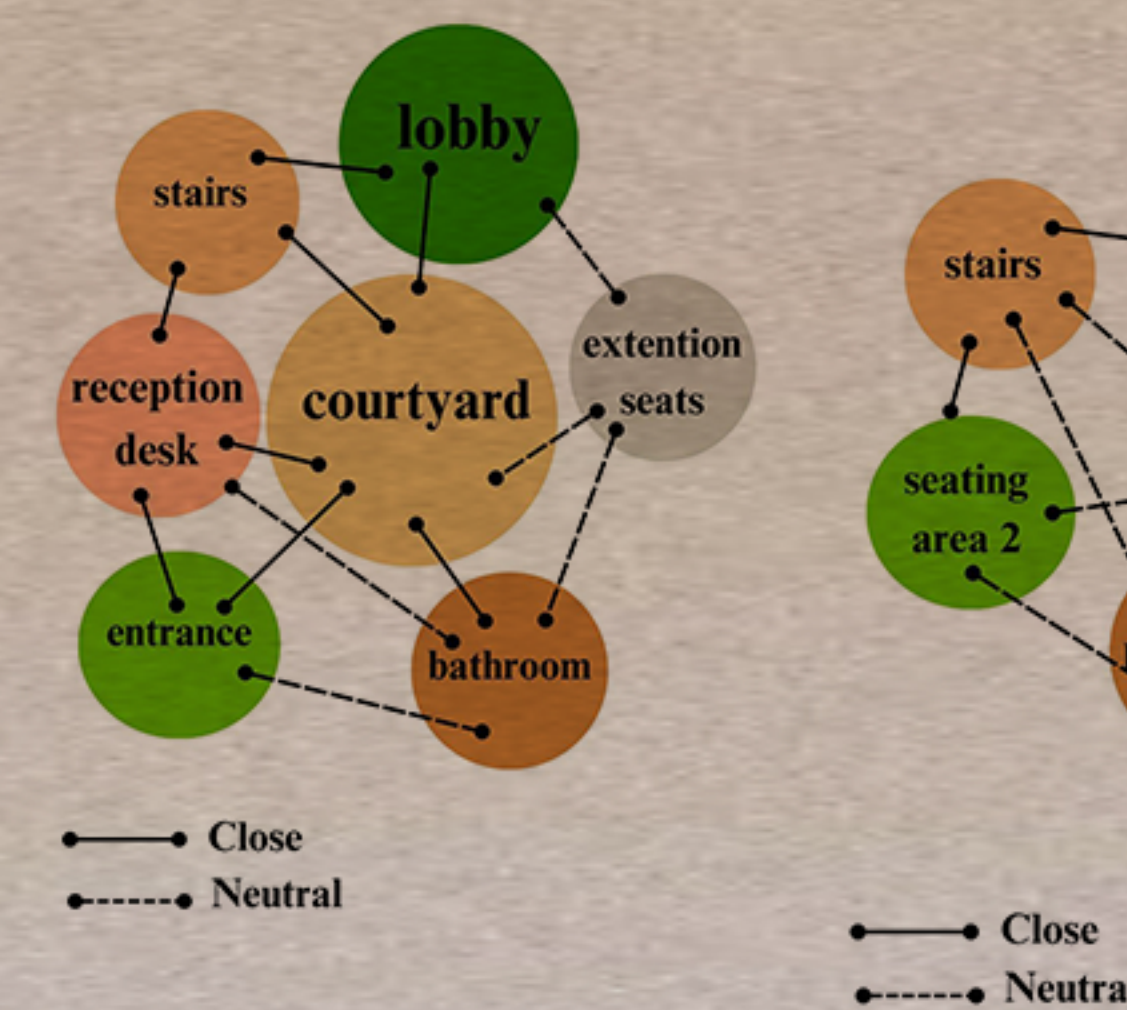
The flooring design is inspired by traditional Fayoumi rugs, translating their patterns, colors, and geometric motifs into architectural floor compositions. This strengthens the connection between interior design and local craftsmanship, grounding the space in its cultural context.

Overall, the design reflects a dialogue between heritage and modernity, using geometry, materiality, and local inspiration to create a boutique hotel experience that is both timeless and rooted in Fayoum's identity.

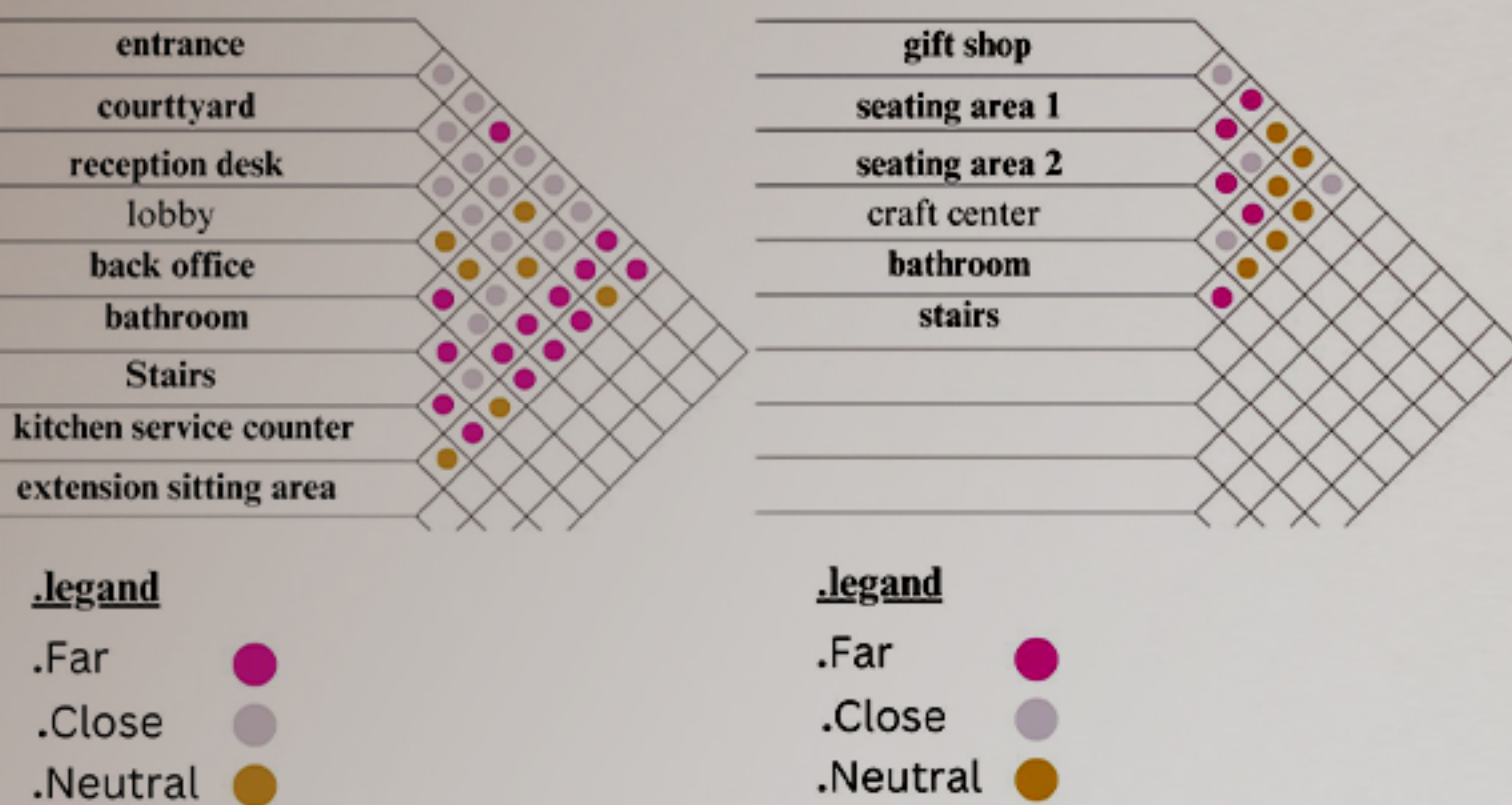


Ground floor plan

First floor plan



Color scheme & Materials



MOOD BOARD

