
CENTER

A project of:

Enrique Getzemaní García Campos
Luis Enrique Quezada Torres

*Participatory Architecture of Medium
Complexity*



1. WHAT IS A CENTER?

The Polycentric City
Multiplicity

2. WHERE IS THE CENTER?

Chicago characteristics
District characteristics
Site characteristics

3. HOW IS THE CENTER?

Thinking process
Manifiesto strategies
Strategies
Program list
Analogous examples
Form diagram

4. INSIDE THE CENTER

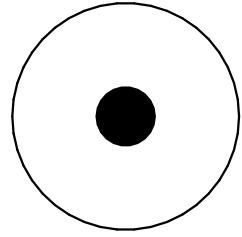
Altos
Gabions
Vegetation palette
Masterplan
Buffer

4.1. RIVERFRONT
4.2. ACTIVE PARK
4.3. LANE
4.4. NUCLEUS
4.5. CULTURAL AXIS
4.6. MARKET
4.7. BUILT
 Materials
 Structural
4.7.1. Public
4.7.2. Semi-public
4.7.3. Private
 Terraces
4.7.4. Bioclimatic
5. DYNAMICS
5.1. WATER
5.2. PEDESTRIAN
5.3. VEGETATION
5.4. USES BY SITUATION

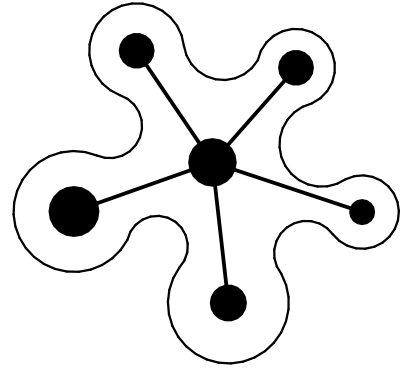
WHAT IS A CENTER?

The Polycentric City

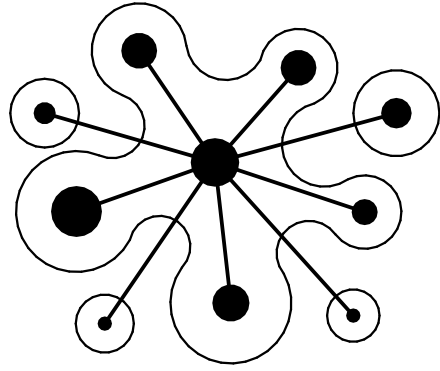
A polycentric city, also known as the 15-minute city, is structured around multiple urban centers where daily needs like work, education, leisure, and services are accessible within a short walk or bike ride. This model promotes social equity, environmental balance, and stronger community ties by prioritizing proximity and human-scale living over urban sprawl.



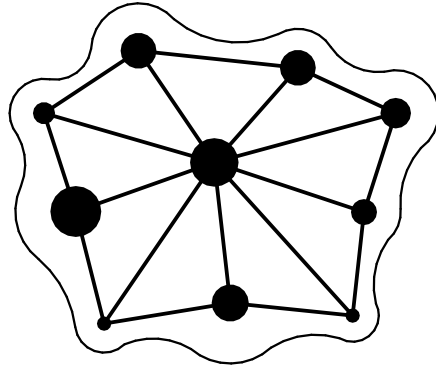
Compact City



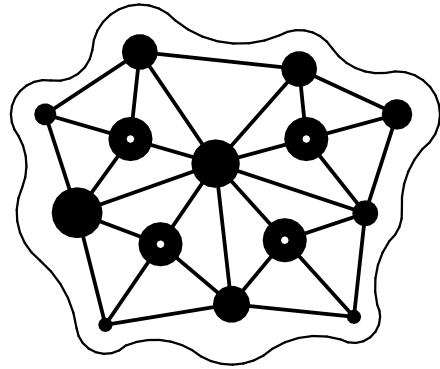
Medium City



Scattered City

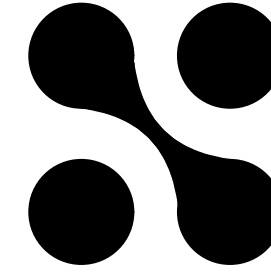


Mega City

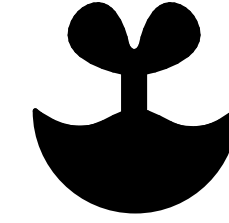


Center seeks to be part of the strategy to maximize connectivity within the ideology of the polycentric city in contemporary urban contexts.

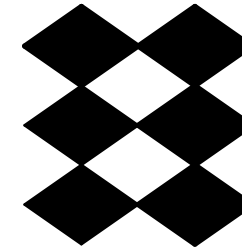
What characteristics does a site need to have to **multiply** this type of intervention?



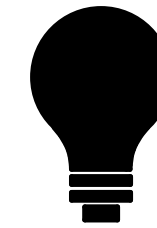
Transition



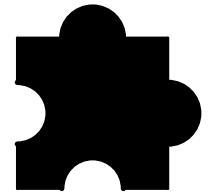
Strict land use



Cultural equity



Resource availability



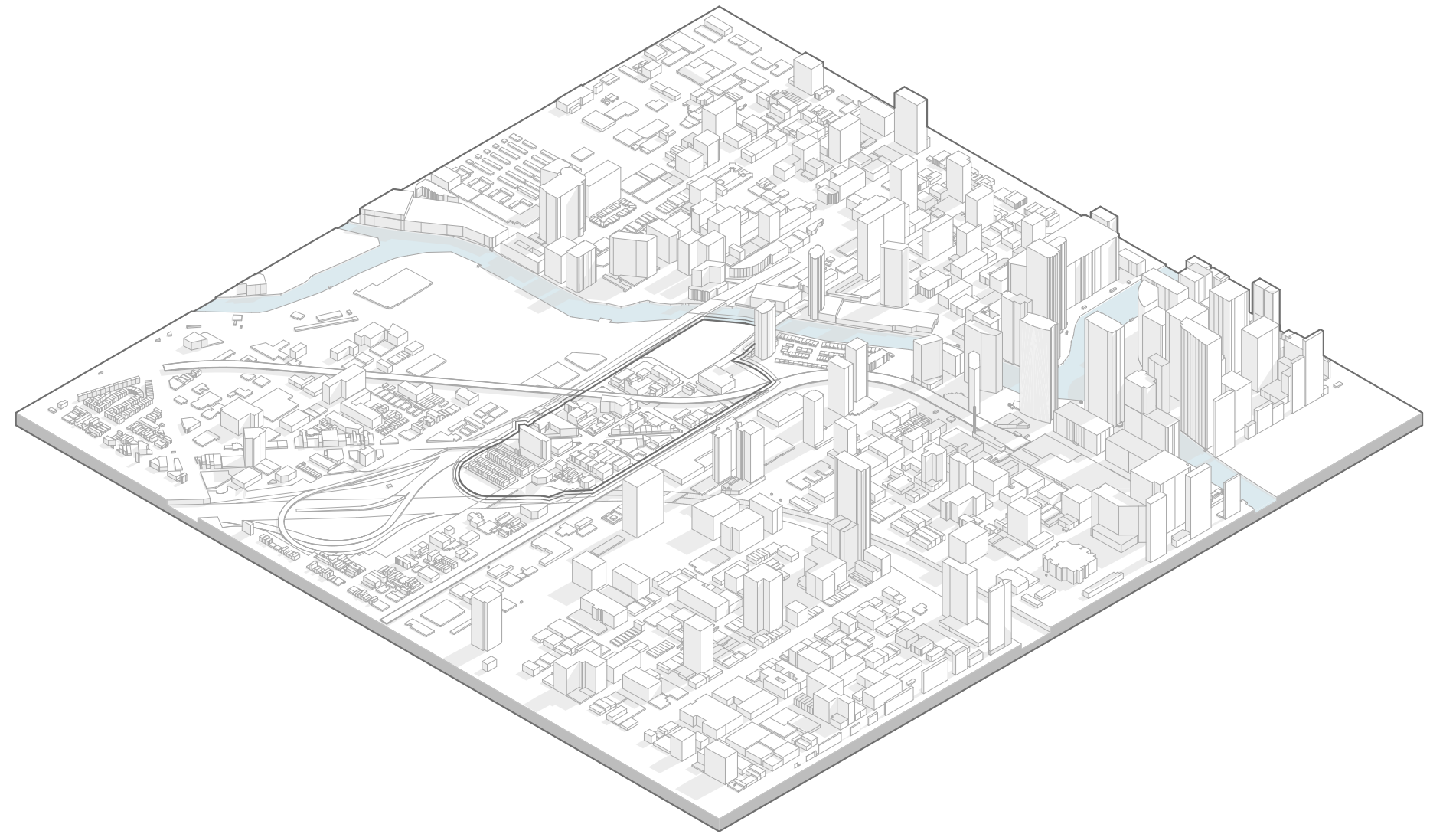
Integration potential

WHERE IS THE CENTER?

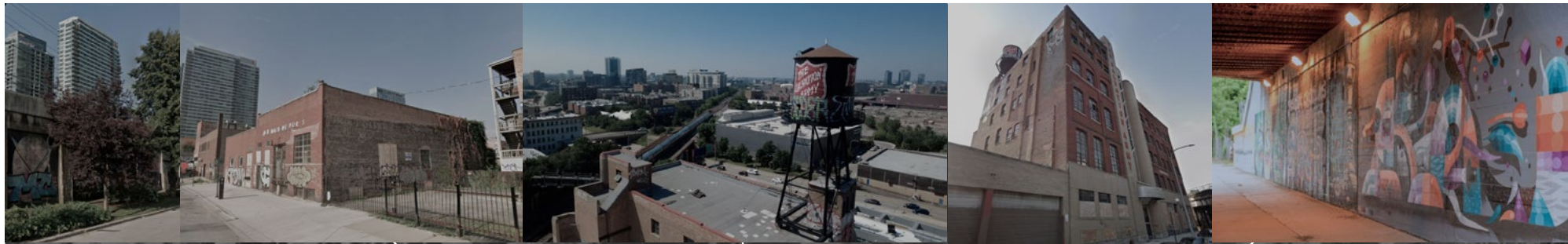
Chicago's urban fabric pulses through multiple districts, each carrying its own rhythm, energy, and cultural weight. Instead of converging toward one dominant core, the city disperses its vitality across a network of emerging nodes, places where movement, production, and public life intertwine. This polycentric condition creates a landscape in constant negotiation, where boundaries blur and new relationships form between people, infrastructures, and space. Within this shifting field, the site becomes one more point of intensity: a place where the city's dispersed dynamics connect, reconfigure and evolve into new possibilities for urban life.



Chicago characteristics



Axonometric of Fulton River District

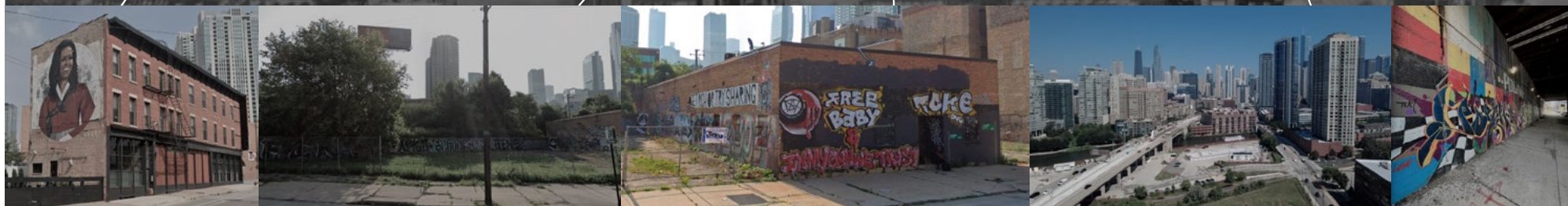


TRANSITION PLACE

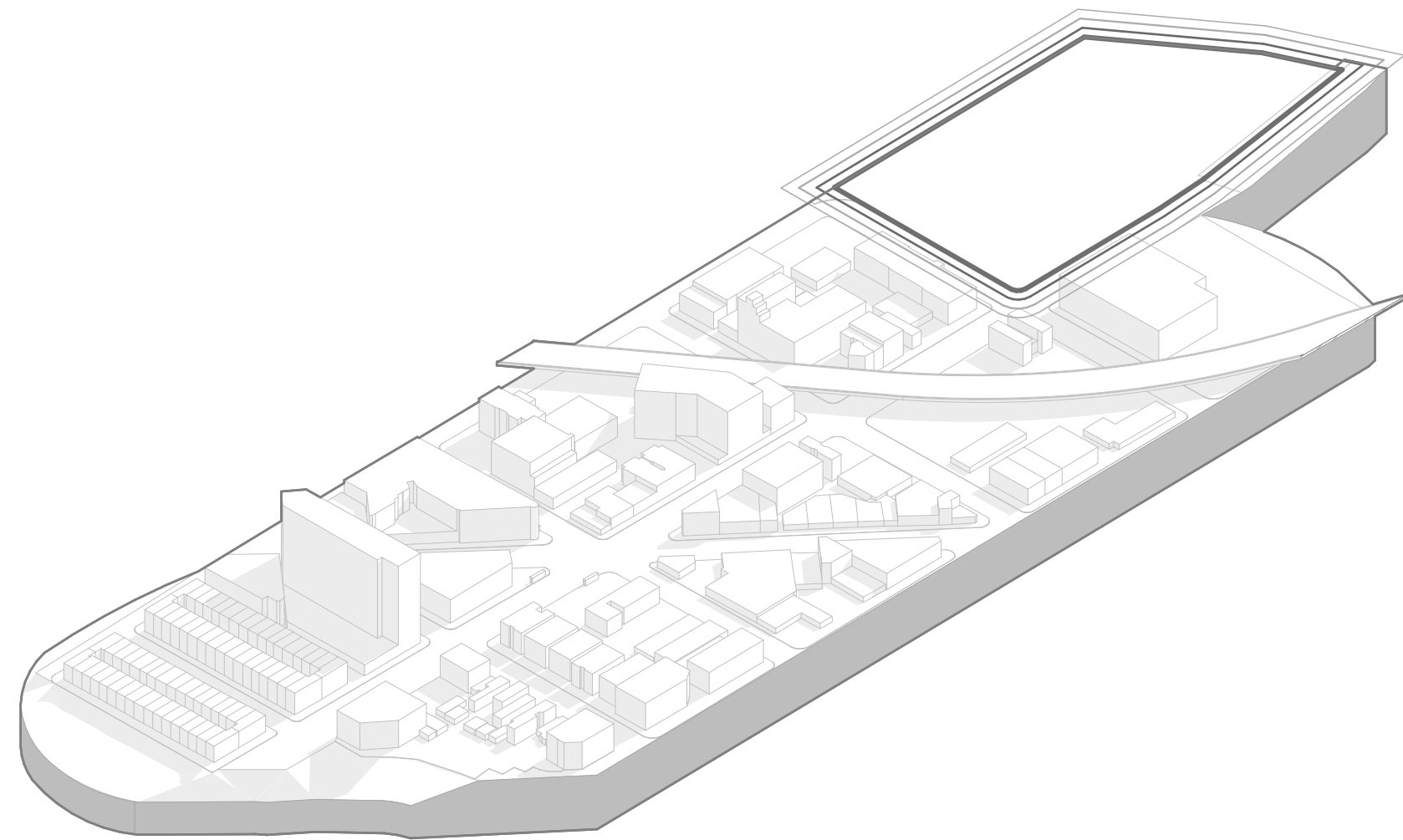
WITH URBAN VOIDS

UNRECOGNIZED
CULTURAL VALUE

IGNORED

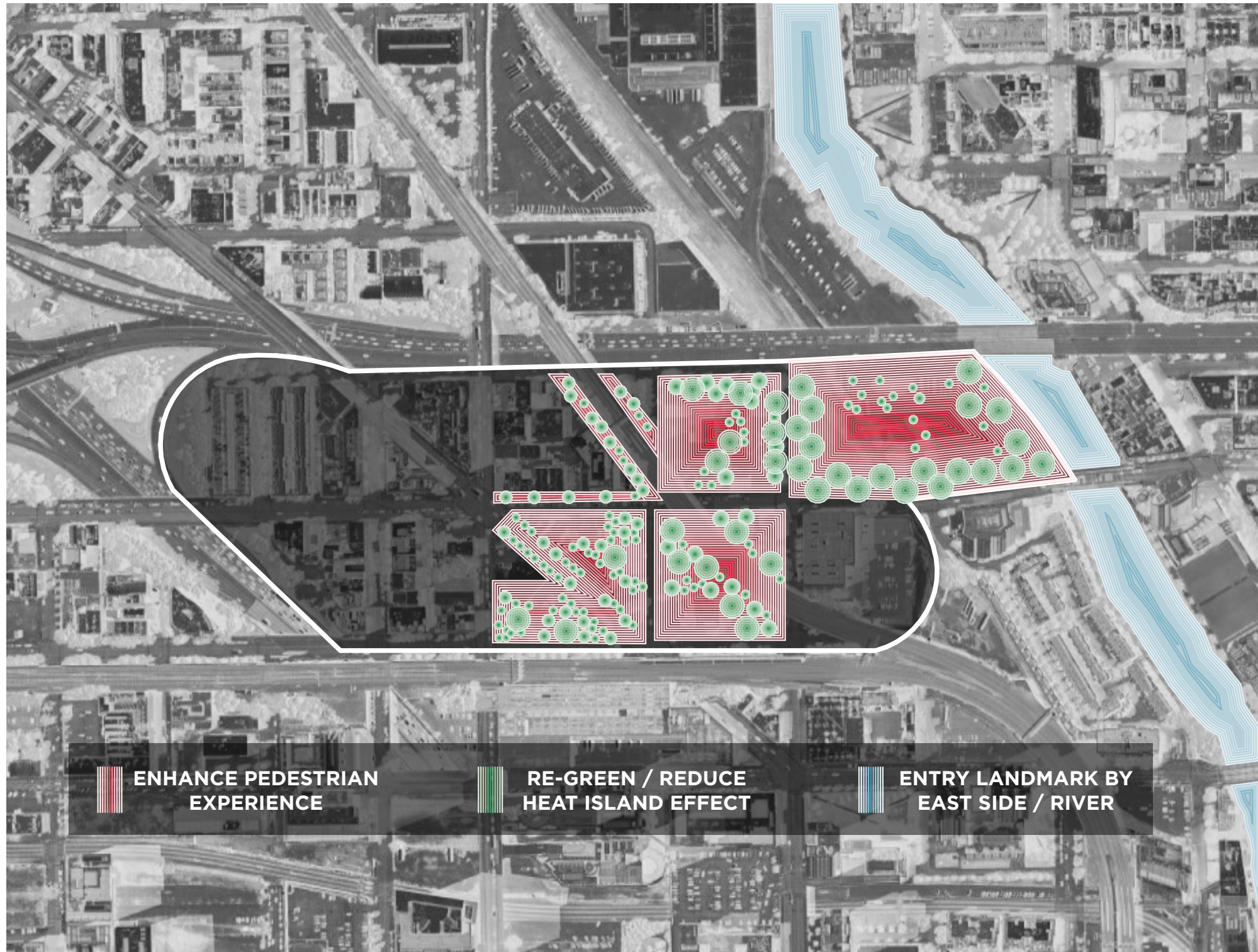


District characteristics



District axonometric



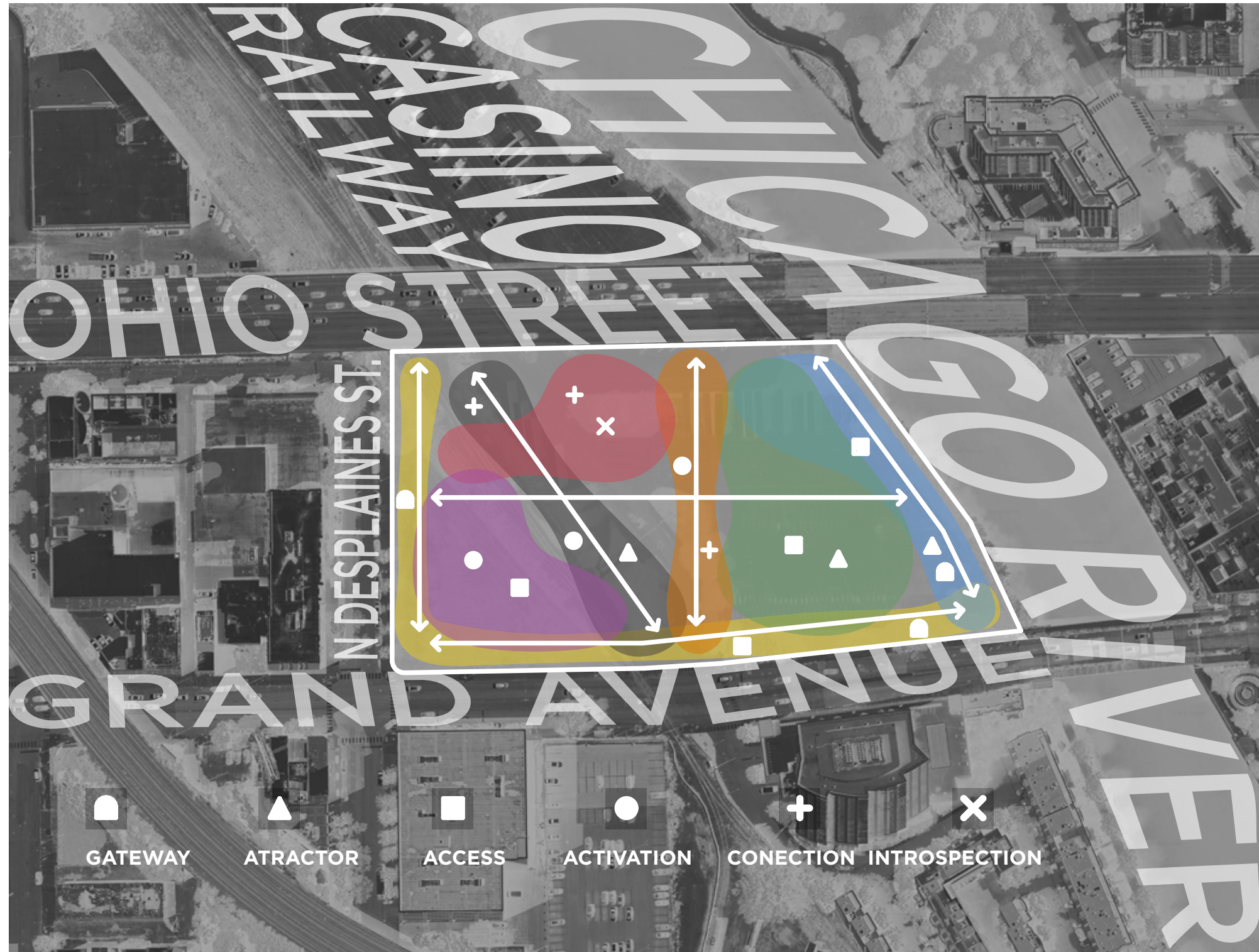


Architecture of medium complexity acts as an intermediary force within a district. Bold enough to reorganize the existing conditions. Rather than imposing a singular gesture, it operates through calibrated layers, spatial porosity, programmatic hybridity, and infrastructural flexibility. These qualities allow the architecture to register the site's flows, tensions and latent potentials, translating them into spatial strategies that amplify local dynamics instead of replacing them.





Site axes



Site defintory elements

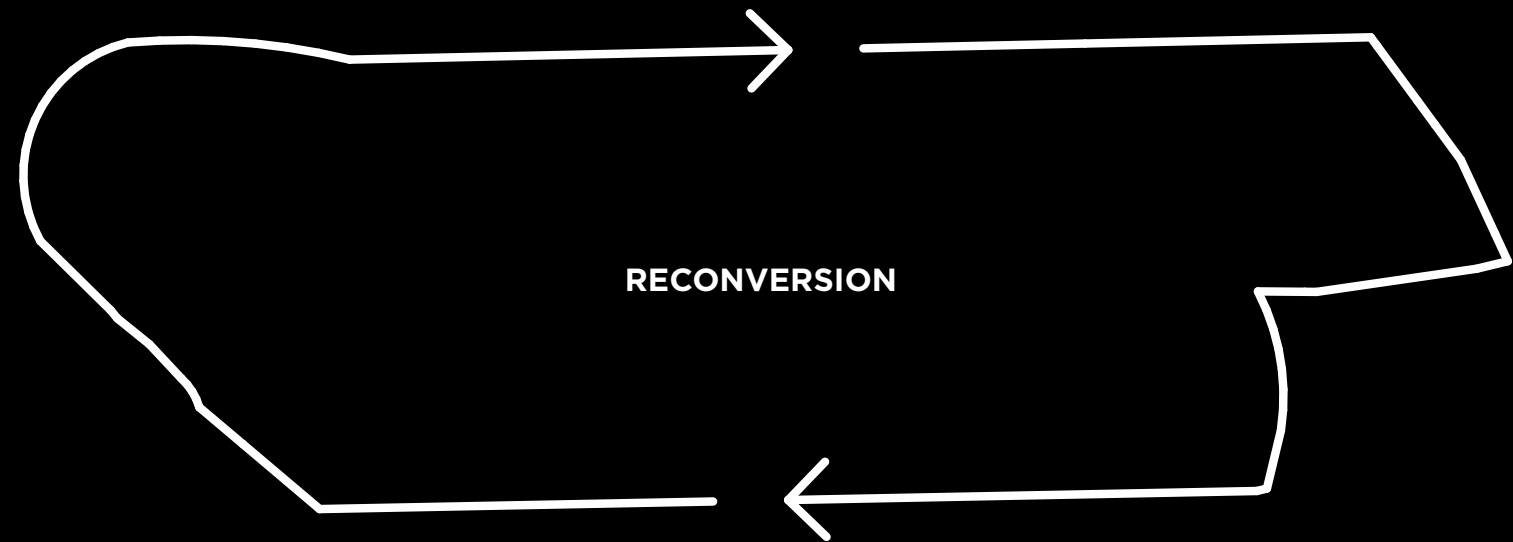
HOW IS THE CENTER?

How can we foster "the whole"
through a polycentric urban model?

INDIVIDUALISM
SERVICES MOBILITY
EQUIPMENTS **CENTER** CULTURES
BARRIERS GREEN AREAS
COMMUNITIES HOUSING
BIAS

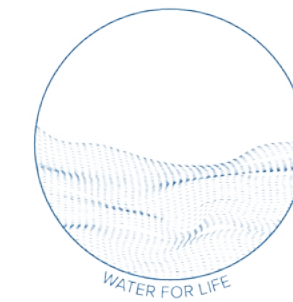
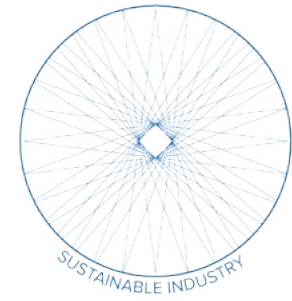
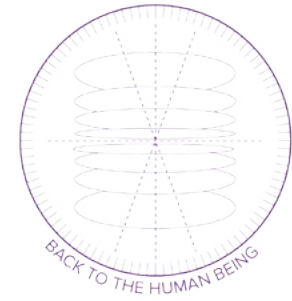
Center is conceived as a system that challenges the fragmented logics shaping contemporary urban life. Concepts such as individualism, mobility, services, housing, cultural divides, and spatial barriers are not treated as isolated issues, but as interconnected forces that shape how communities form—or fail to form—within the city.

By mapping these conditions into a single framework, the project exposes their overlaps and redefines their relationships through strategies that merge access, public space, and programmatic diversity into a cooperative whole. In doing so, Center dissolves physical and social barriers, turning everyday interactions into opportunities for shared belonging and proposing a collective model of urban life that counters isolation and strengthens the dynamics of the polycentric city.

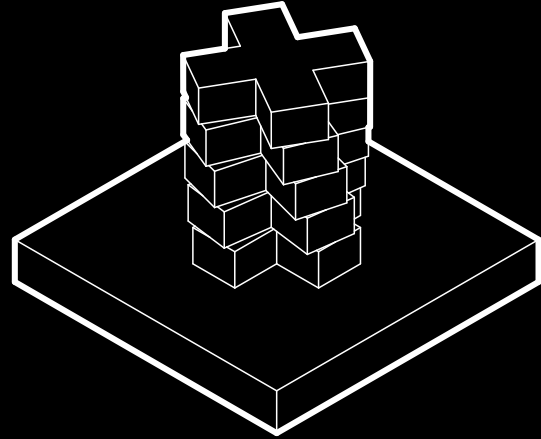


MANIFESTO STRATEGIES

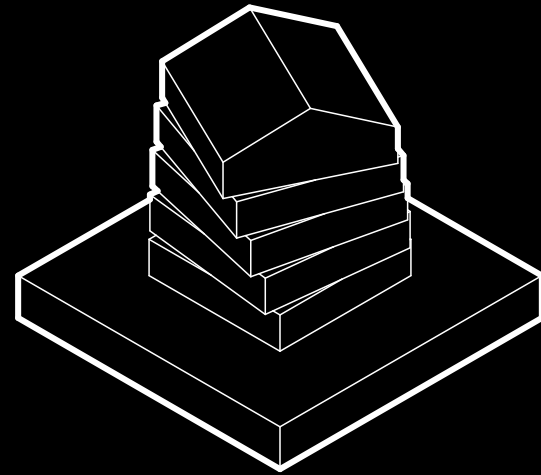
As part of the project's approach, all nine strategies from the manifesto are applied to address its territorial scale and complexity. Working with such a broad and interconnected context requires multiple lenses that operate simultaneously across ecological, social, and spatial dimensions. Focusing on a single strategy would have constrained the project's potential and reduced its capacity to respond to the diversity of conditions within the site. By integrating all nine the proposal gains coherence and richness, allowing each intervention to strengthen the others within a unified regenerative framework.



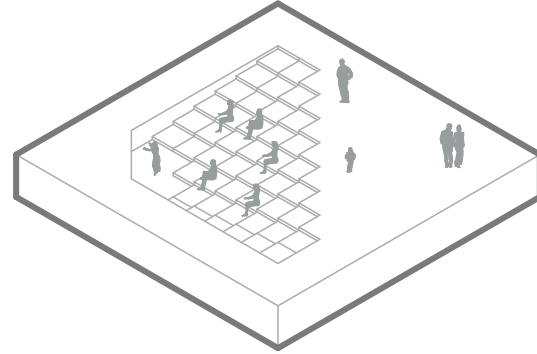
STRATEGIES



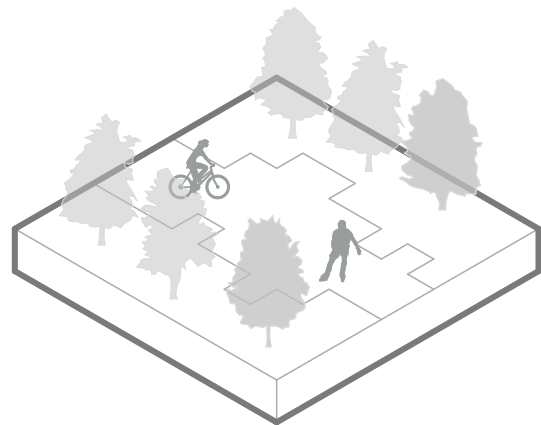
HEALTH, WELLNESS & COMMUNITY



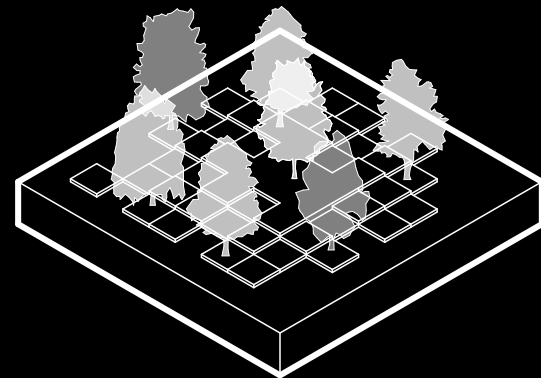
HOUSING



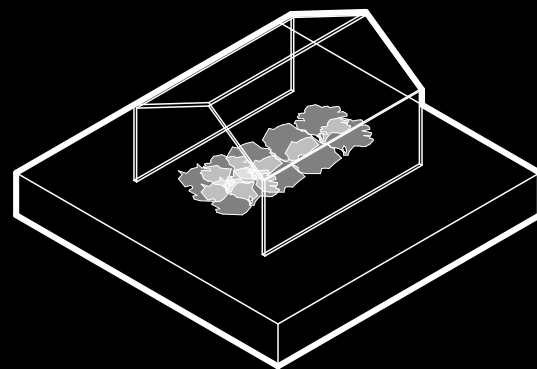
PUBLIC SPACE AND CULTURE



MOBILITY AND CONNECTION



GREEN INFRASTRUCTURE AND ECOLOGICAL RESILIENCE



LOCAL PRODUCTION AND FOOD

CENTERS

Housing

- Family
- Couples
- Studio

Commerce

- Produce Garden
- Agriculture
- Bar
- Communal Kitchen

Health

- Prevention Clinics
- Spiritual Spaces

Culture

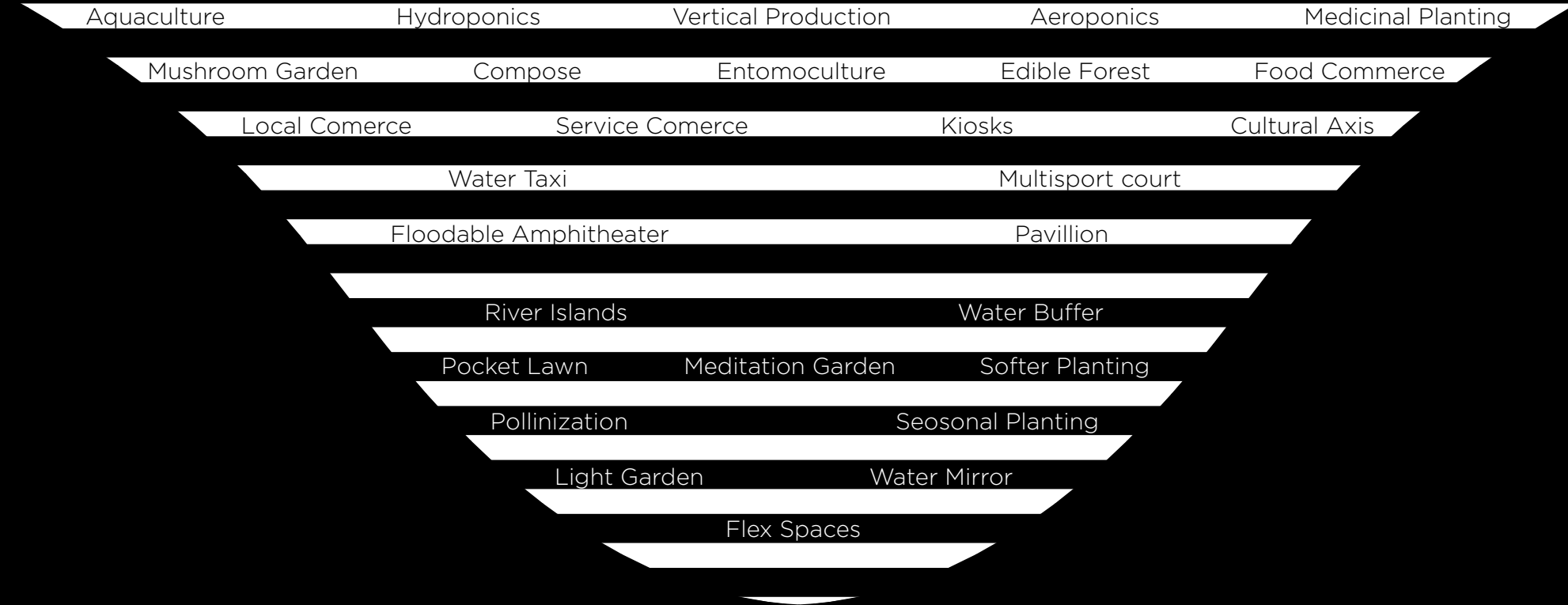
- Art Galleries
- Museum
- Amphitheater
- Workshop Spaces

Parks

- Green Observatories
- Disconnection Zones
- Roof Gardens
- Green Facades

Education

- Elementary School
- Library



PUBLIC SPACES / LINKAGE

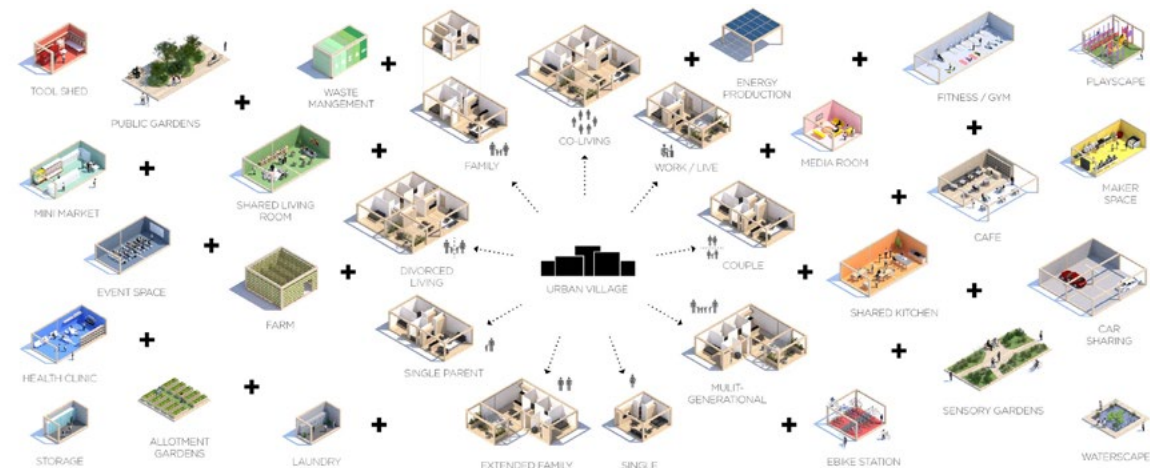


URBAN VILLAGE | EFFEKT

Urban Village Project proposes a new model for affordable and livable urban housing. Developed with SPACE10, it reimagines how we design, build, and share our cities to address rapid urbanization, inequality, and environmental challenges.

The project introduces a modular wooden system designed for disassembly and circular use, enabling low-impact construction and adaptability. It also proposes a new financial model that makes quality housing accessible to all income levels, and shared living communities that foster connection across generations.

By combining social inclusion, sustainability, and affordability, Urban Village Project envisions resilient and regenerative urban futures.



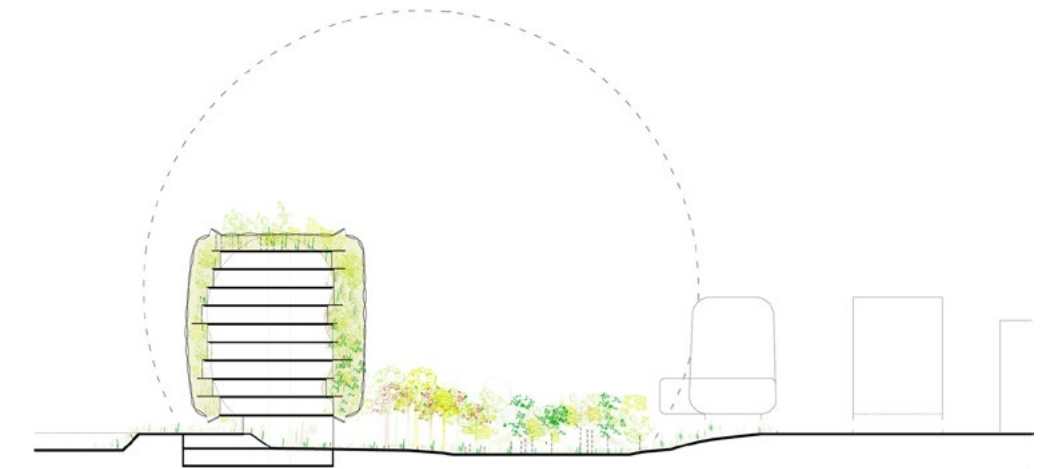
Analogous

DRIVHUS | SELGASCANO

SelgasCano and U.D. Urban Design AB won an international competition to design the new administrative and planning offices for the City of Stockholm. Their proposal, Drivhus ("Greenhouse" in Danish), will be located in Söderstaden, south of the historic city center.

Conceived as both a workspace for 1,800 people and an open civic forum, Drivhus invites civil servants, politicians, and citizens to meet and discuss the city's future. The project aims to revitalize a major urban area, transforming its surroundings into more human-centered environments.

At its heart, a natural park anchors the new development, surrounded by housing, commercial spaces, and cultural venues. The park's greenery extends into the building itself, growing beneath the ETFE double façade, which creates a mild microclimate that supports plant life and enhances the interior workspaces.



Analogous

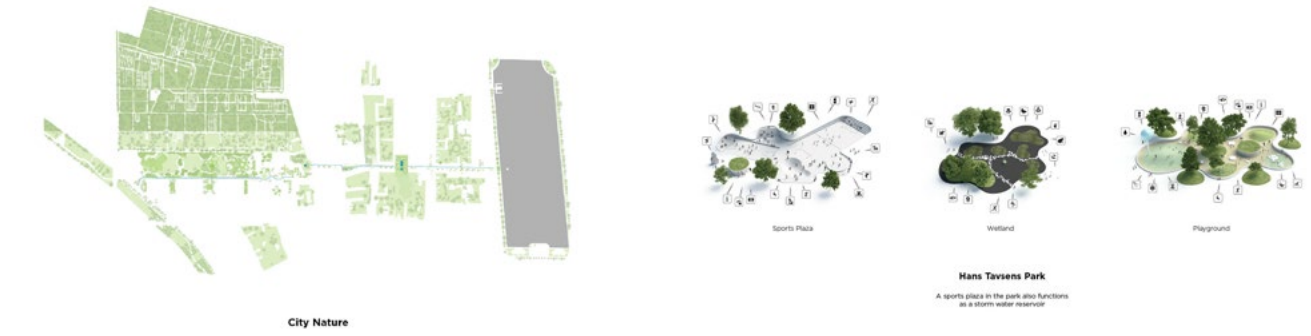


GROW NØRREBRO | EFFEKT

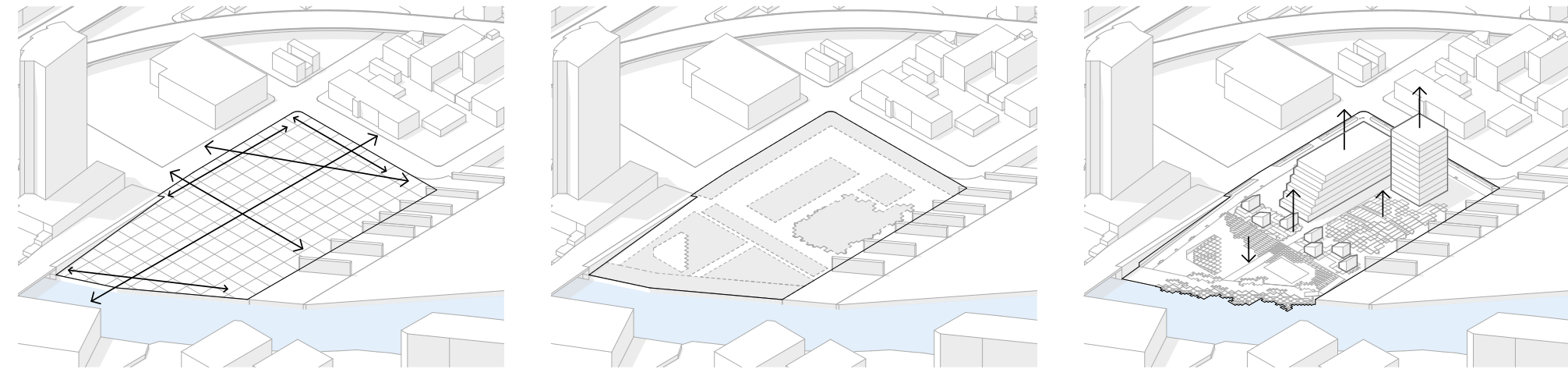
Grow Nørrebro was developed for the Nordic Built Cities Challenge: Cloudburst & Culture, proposing a vision that merges urban development and climate adaptation across 85,000 m² in Copenhagen's Nørrebro district.

The project envisions a model for growing urban spaces, culture, and nature organically while enhancing the area's cultural, spatial, and biological diversity.

It unfolds in two layers: the first introduces a cloudburst road linking Hans Tavsens Park to Pebling Sø, creating a "blue thread" for water management and public life that reconnects the area with its historical roots. The second layer comprises 16 new urban spaces, developed collaboratively with residents and local actors—each acting as a living lab for community, biodiversity, and city culture, ensuring the project's strong local foundation and long-term adaptability.



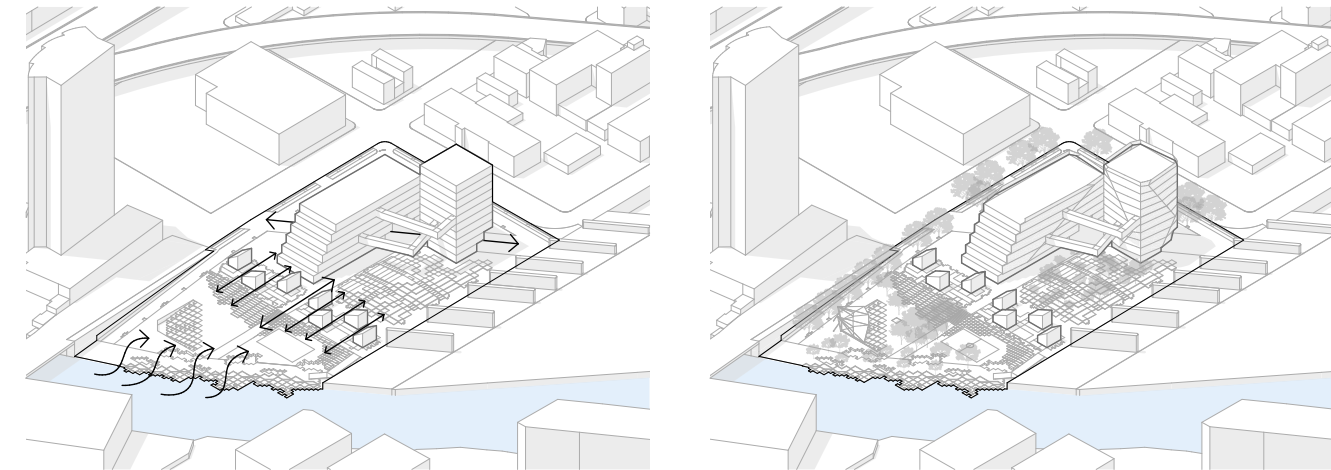
Analogous



Define axes and grid

Zoning

Extrude



Connect

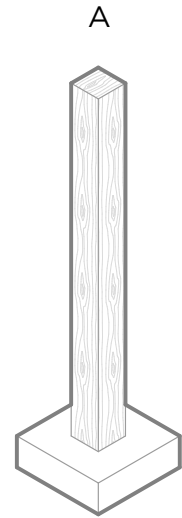
Re-green

Form Diagrams

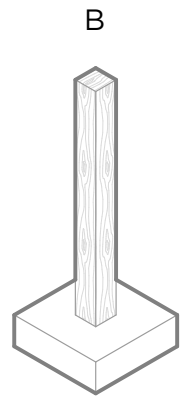


INSIDE THE CENTER

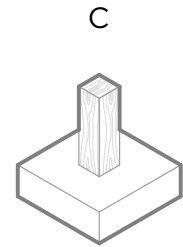
COMMON



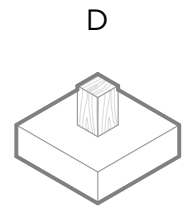
4.5 m



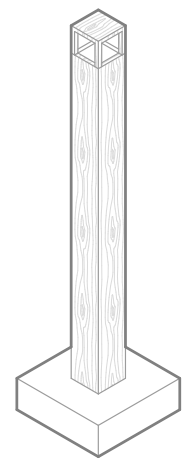
3 m



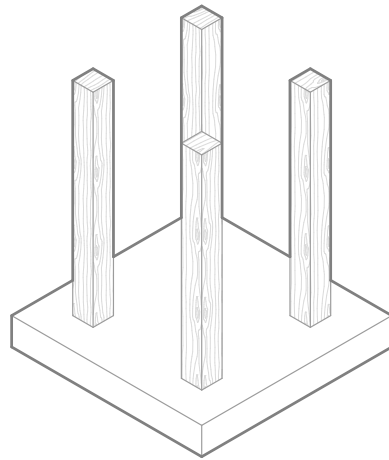
1 m



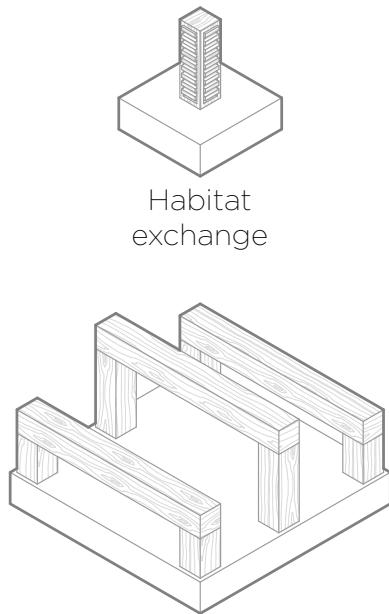
0.5 m



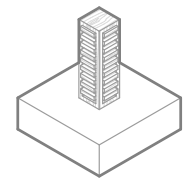
Light & Buildings



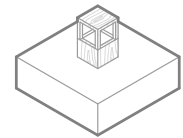
Pavillions & Permeability



Playground & Furniture



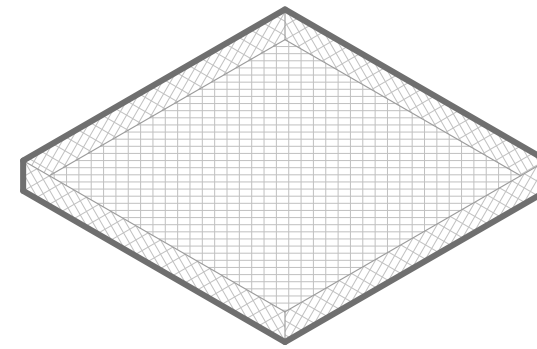
Habitat exchange



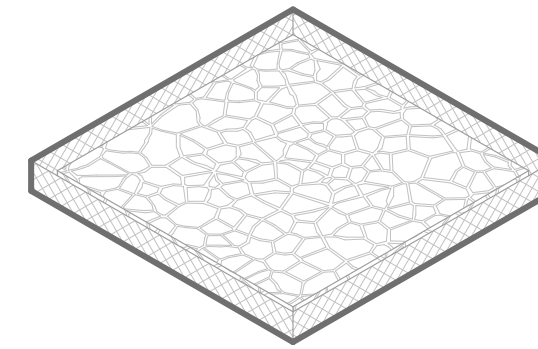
Lights & Circulation

Altos are a defining component of the project, recurring across buildings and public spaces in four different scales. Beyond their constructive role, they articulate spatial rhythm, enhance permeability, and unify the project's identity. Their repetition and variation generate continuity, allowing to merge into a cohesive and recognizable system.

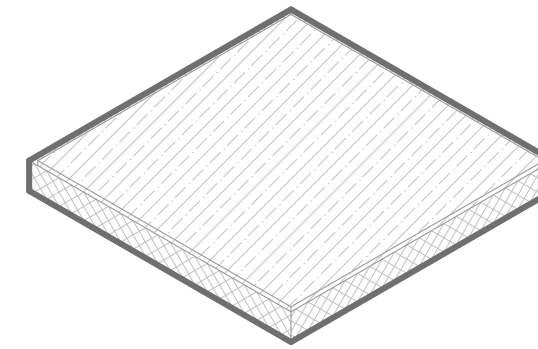
Altos



Steel wire mesh cage



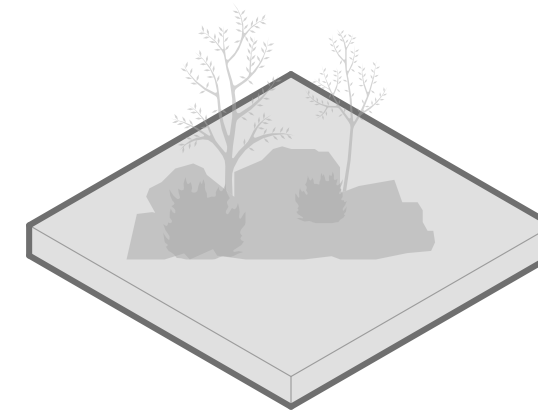
Concrete debris



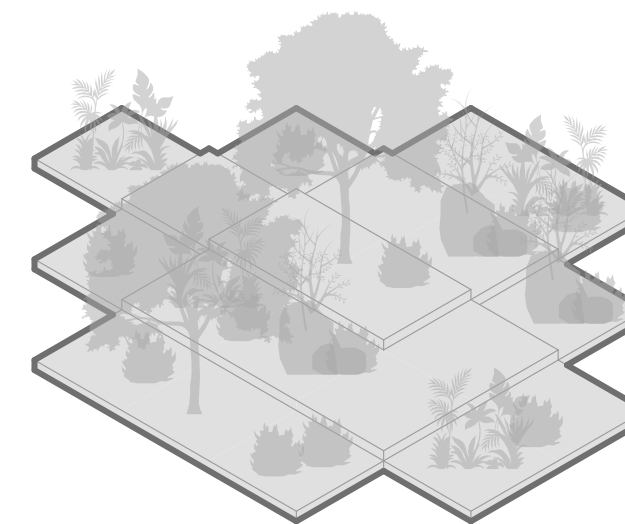
Soil

Filled with reclaimed concrete from the existing pavement, the gabions act as a unifying landscape element across the site. They embody principles of reuse and regeneration, restoring soil permeability and reinforcing the project's circular approach.

Gabions

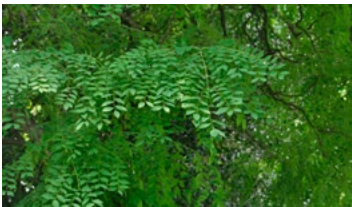


Cover with vegetation



Stack

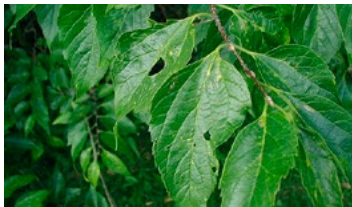
TREE PALLETTE



Gymnocladus dioicus



Gleditsia triacanthos var. inermis



Celtis occidentalis



Quercus macrocarpa



Prunus serotina



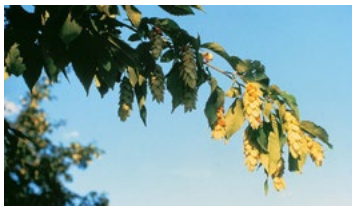
Amelanchier arborea



Sassafras albidum



Carpinus caroliniana



Ostrya virginiana



Juglans nigra



Ulmus americana



Fraxinus americana



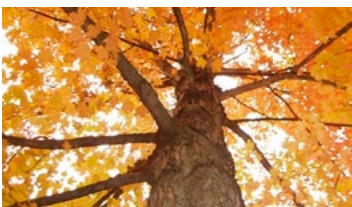
Carya cordiformis



Carya ovata



Tilia americana



Acer saccharum



Quercus rubra



Quercus alba



Betula papyrifera



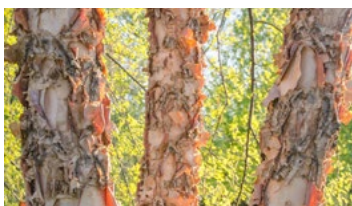
Fraxinus pennsylvanica



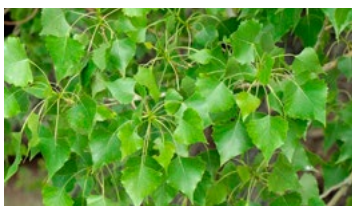
Acer rubrum



Platanus occidentalis



Betula nigra



Populus deltoides



Salix nigra

VEGETATION PALLETTE



SHRUB PALLETTE

*order based on water consumption



Diervilla lonicera



Ceanothus americanus



Rhus aromatica



Rhus glabra



Rubus odoratus



Amelanchier alnifolia



Prunus virginiana



Hypericum proliferum



Amorpha fruticosa



Ribes cynosbati



Ribes americanum



Aronia arbutifolia



Aronia melanocarpa



Physocarpus opulifolius



Viburnum lentago



Viburnum trilobum



Viburnum dentatum



Cornus racemosa



Spiraea alba



Ilex verticillata



Sambucus racemosa



Cornus sericea



Spiraea tomentosa



Cephalanthus occidentalis



Sambucus canadensis

HERBACEUS PALLETTE

*order based on water consumption



Liatris aspera



Asclepias tuberosa



Baptisia australis



Penstemon hirsutus



Echinacea pallida



Helianthus grosseserratus



Pycnanthemum virginianum



Tradescantia ohiensis



Zizia aurea



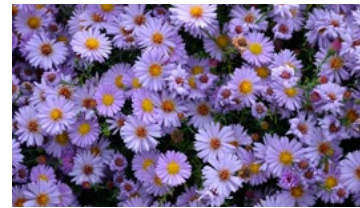
Geranium maculatum



Aquilegia canadensis



Penstemon digitalis



Symphyotrichum laeve



Aster novae-angliae



Liatris spicata



Monarda fistulosa



Asclepias syriaca



Solidago rigida



Heliopsis helianthoides



Rudbeckia fulgida



Rudbeckia hirta



Echinacea purpurea



Verbena hastata



Asclepias incarnata



Solidago canadensis



WETLAND PALLETTE

*order based on water consumption

FRUIT TREE PALLETTE

*order based on water consumption



Juncus dudleyi



Scirpus validus



Scirpus atrovirens



Schoenoplectus acutus



Carex vulpinoidea



Carex comosa



Carex stricta



Sagittaria latifolia



Sagittaria rigida



Pontederia cordata



Nelumbo lutea



Nymphaea odorata



Brasenia schreberi



Alisma subcordatum



Alisma triviale



Juncus effusus



Typha latifolia



Acorus americanus



Lobelia cardinalis



Lobelia siphilitica



Iris virginica var. shrevei



Iris versicolor



Caltha palustris



Saururus cernuus



Bidens cernua



Prunus pumila



Celtis occidentalis



Crataegus crus-galli



Amelanchier alnifolia



Viburnum lentago



Cornus mas



Ribes americanum



Crataegus phaenopyrum



Crataegus mollis



Diospyros virginiana



Carya laciniosa



Carya ovata



Juglans nigra



Prunus nigra



Prunus pennsylvanica



Prunus avium



Prunus cerasus



Malus domestica



Pyrus calleryana



Pyrus communis



Morus rubra



Amelanchier laevis



Prunus virginiana



Prunus americana



Malus ioensis



MASTERPLAN

