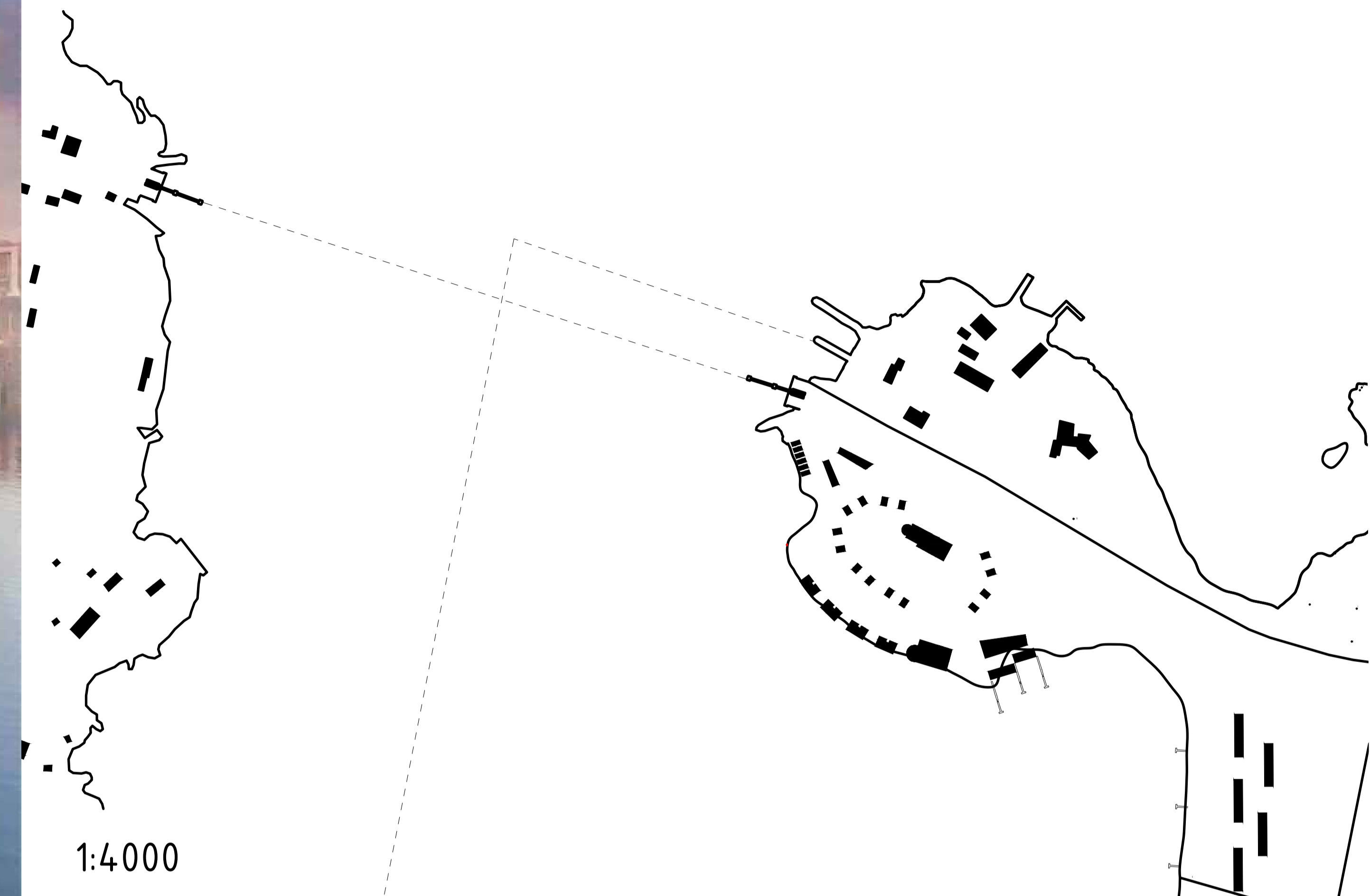




Majakkakylä



An urban planning project focused on creating an attractive and comfortable area for both living and leisure, offering housing options across a wide range of price categories—from the most affordable homes to luxury residences.

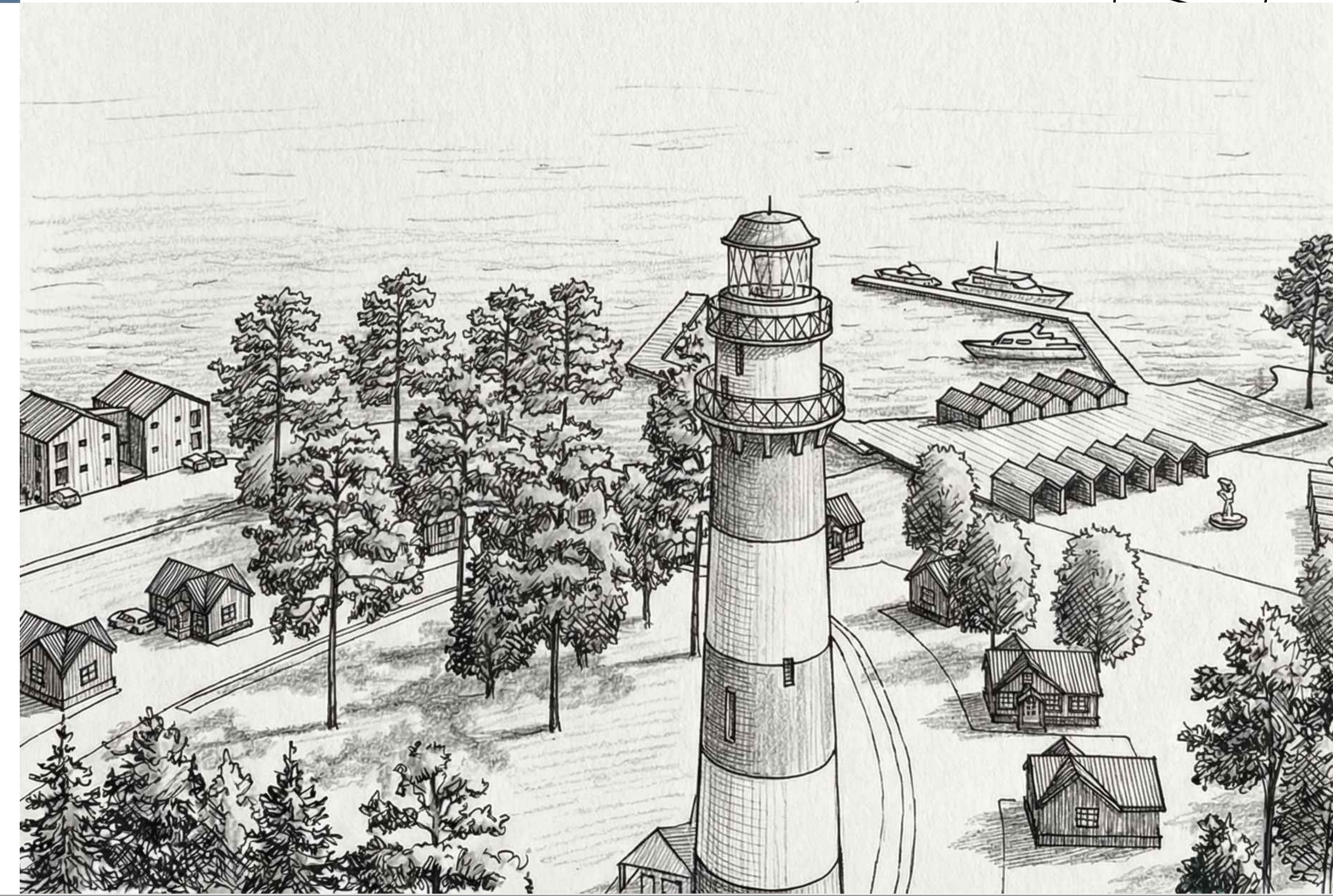
The area features picturesque forest trails for walking, opportunities for boating and fishing, and a spa with direct access to the sea.

In addition, the district benefits from well-developed infrastructure: services, cafés, and restaurants are easily accessible, as are sports and recreational facilities. Public spaces have been designed to encourage social interaction and a sense of community, while special attention has been given to landscape design and green infrastructure. Residential buildings blend naturally into the surrounding landscape, creating a peaceful yet vibrant environment for residents of all ages.

Olga Romanova

14.06.2026

Pärnäinen Urban Development Plan



Project Area Statistics

Residential & Accommodation Areas

	Usable Floor Area	Gross Floor Area
Residential Buildings	3,300 m ² / 160 residents	4,480 m ²

Accommodation

"Tower" Hotel 315 m² / 24 guests 798 m²

Guest Cottages 980 m² / 56 guests 1,148 m²

Seaside Houses 1,688 m² (422 × 4) 3,240 m²

Total Capacity 224 residents/guests 9,666 m²

Parking Provision

Public Parking – 99 Spaces

P1 – 56 spaces

P2 – 28 spaces

P5 – 15 spaces

Visitor Parking – 36 Spaces

P3 – 16 spaces

P4 – 20 spaces

Residential and Accommodation Parking

Residential Buildings – 46 spaces
(0.1 spaces per m² GFA)

Tower Hotel – 12 spaces

(0.15 spaces per m² GFA)

Guest Cottages – 56 spaces

(0.05 spaces per m² GFA)

Seaside Houses – 32 spaces

(0.1 spaces per m² GFA)

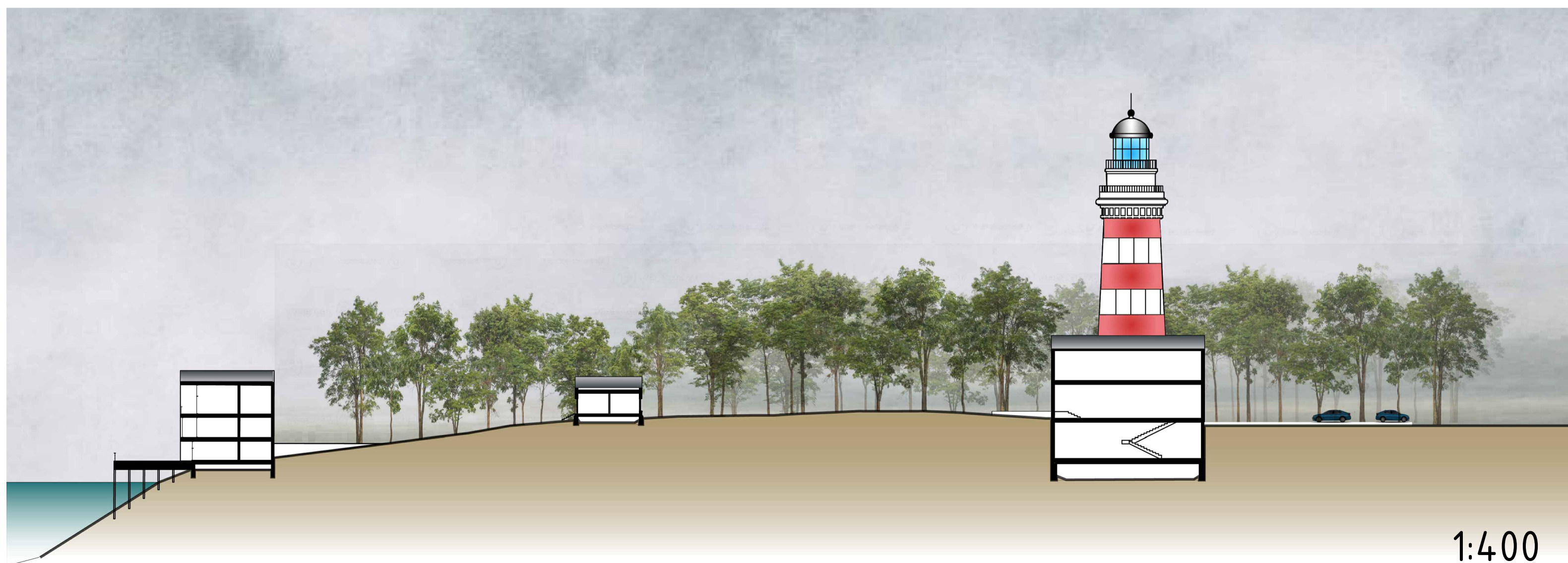
Total Parking Capacity

245 parking spaces

Section A-A



Section B-B

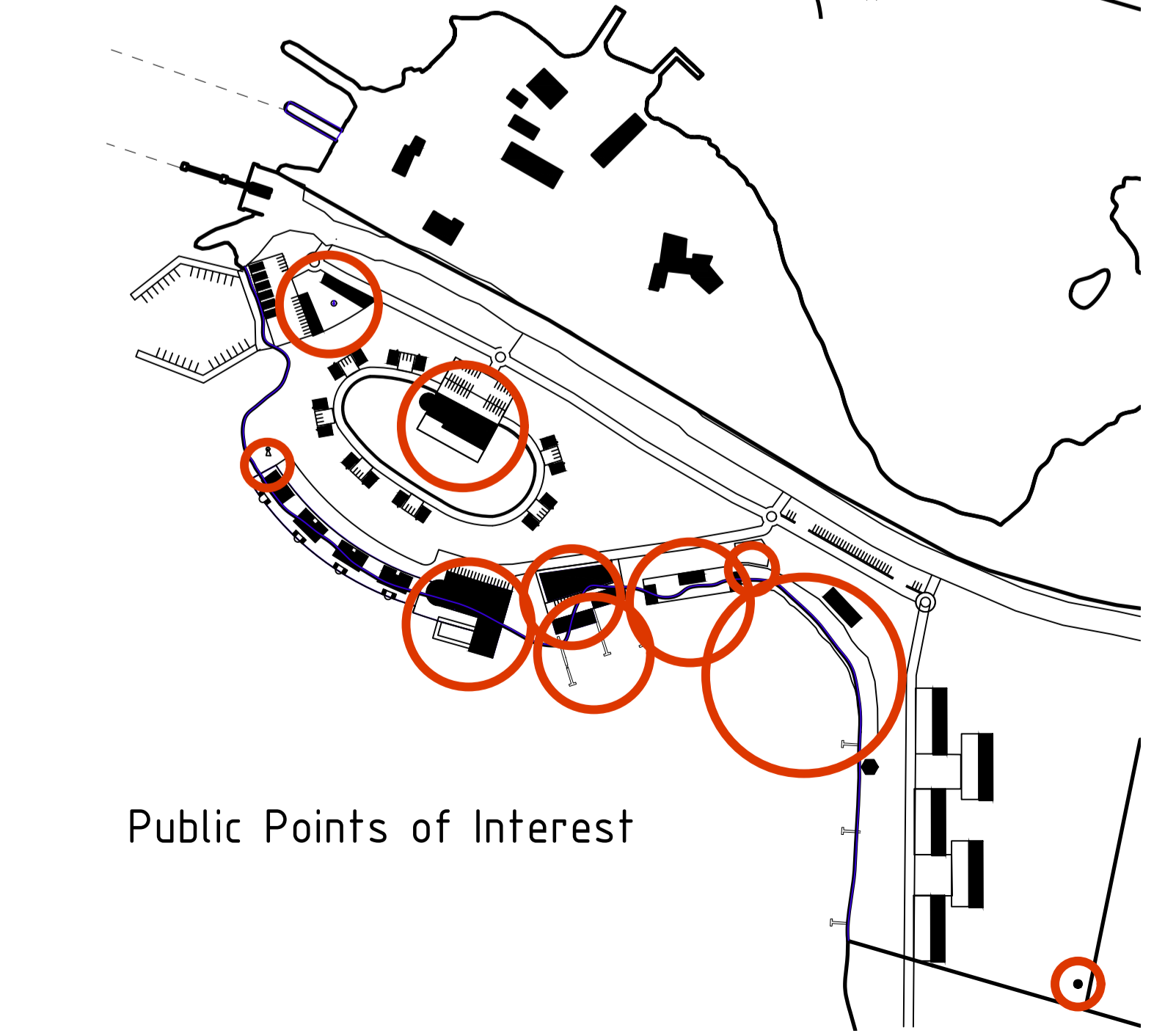
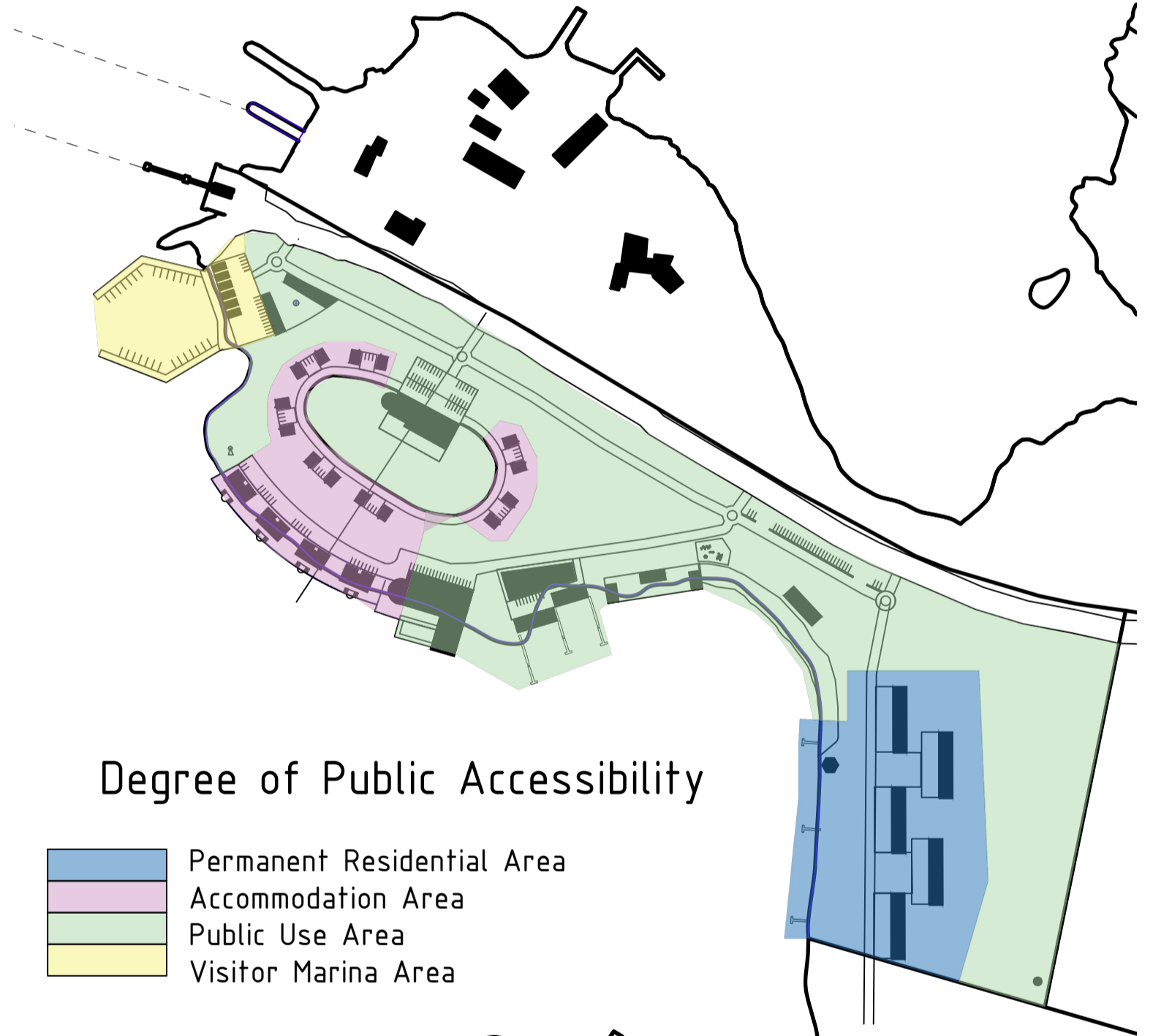
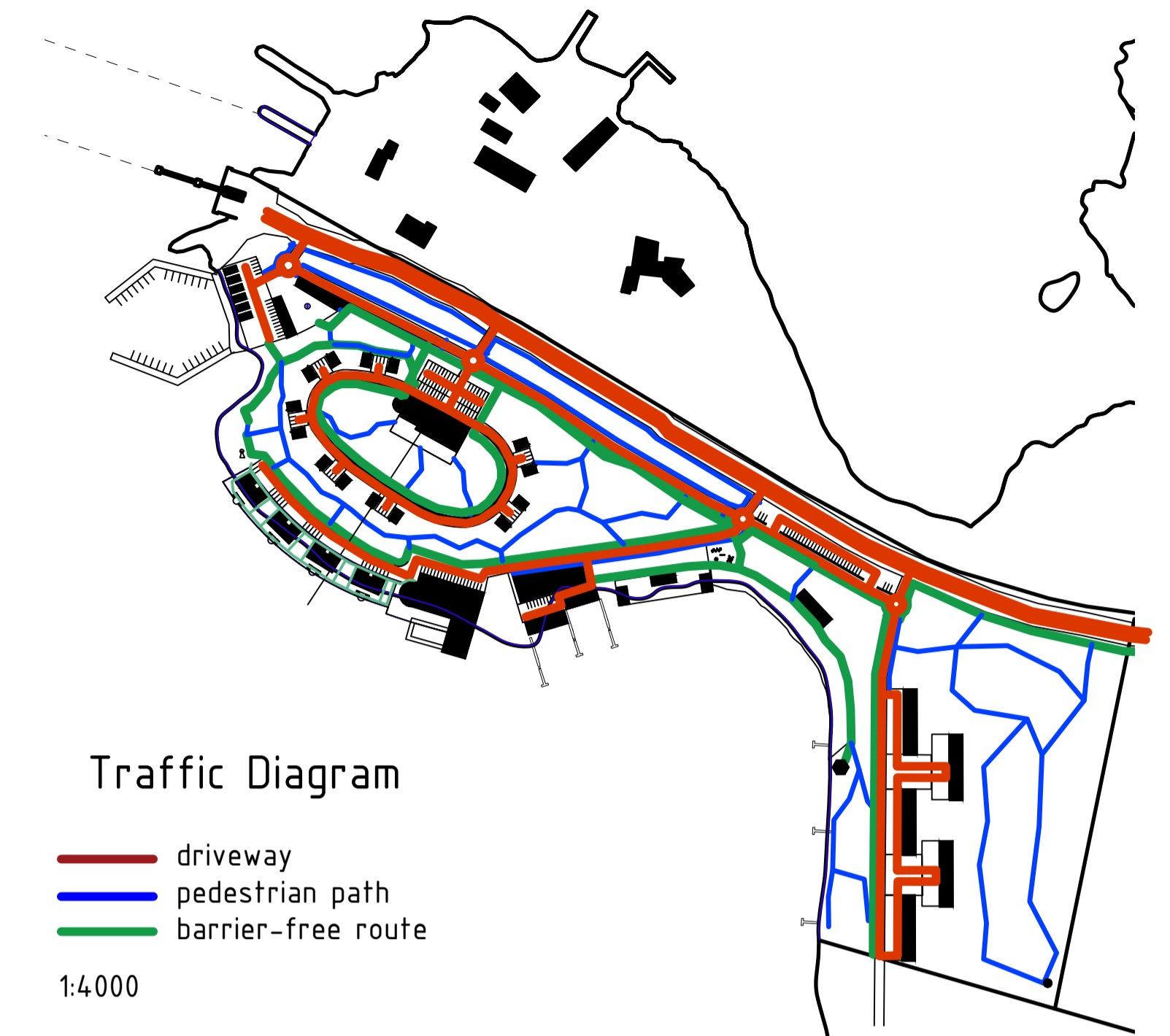


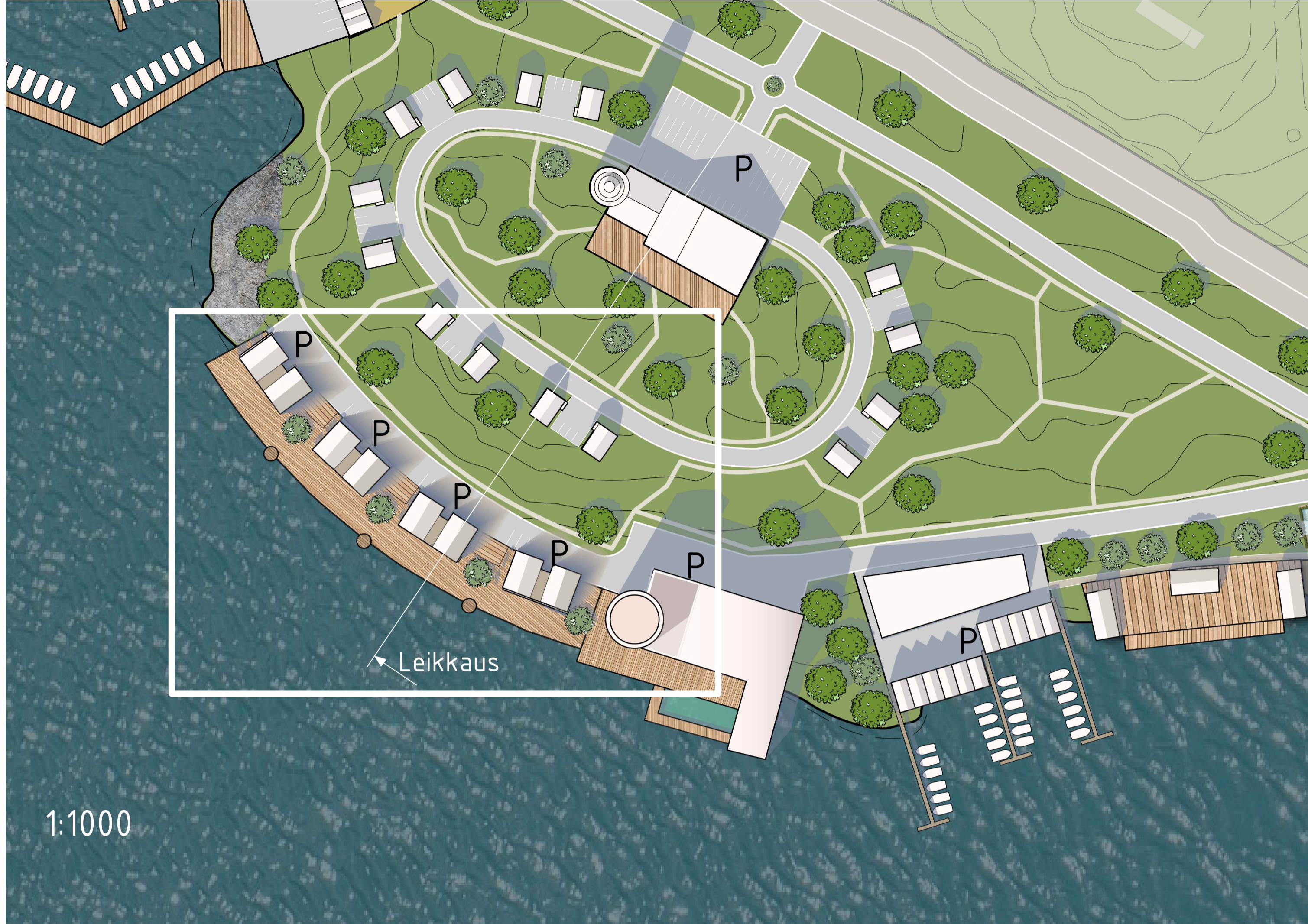
Map Legend

- | | |
|---|---------------------------------|
| 1. Shopping Centre, Restaurant, Reception | 11. Public Beach |
| 2. Lighthouse | 12. Seaside Café |
| 3. Art Installation | 13. Townhouse Residences |
| 4. Market Square | 14. Bird Observation Tower |
| 5. Marina | 15. Outdoor Barbecue Area |
| 6. Accommodation – 14 Houses | 16. Outdoor Swimming Pool |
| 7. Equipment Rental center | 17. Spa & Seafood Restaurant |
| 8. Boathouse | 18. Tower Hotel |
| 9. Pier | 19. Apartment Buildings (4) |
| 10. Seaside Saunas | 20. Boat Launch & Boarding Area |
| | 21. Children's Playground |

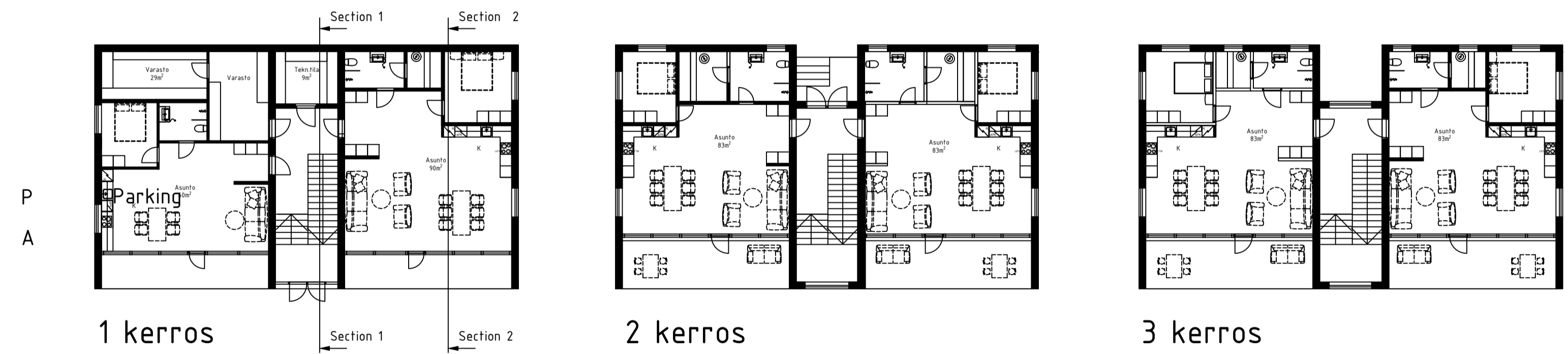
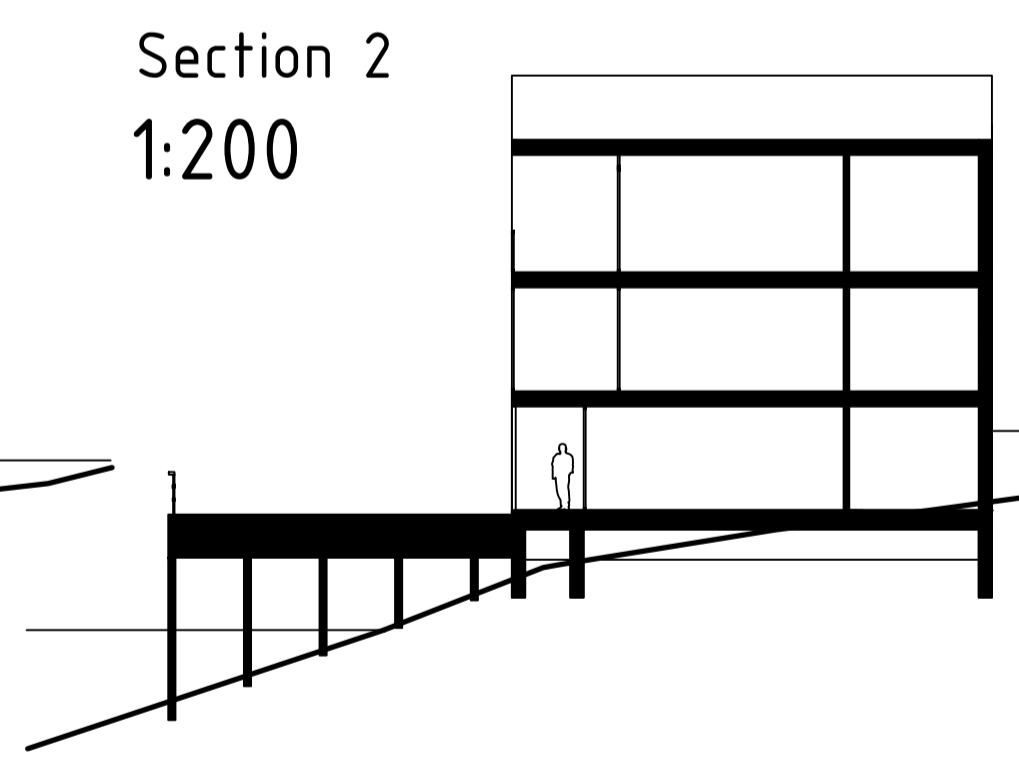
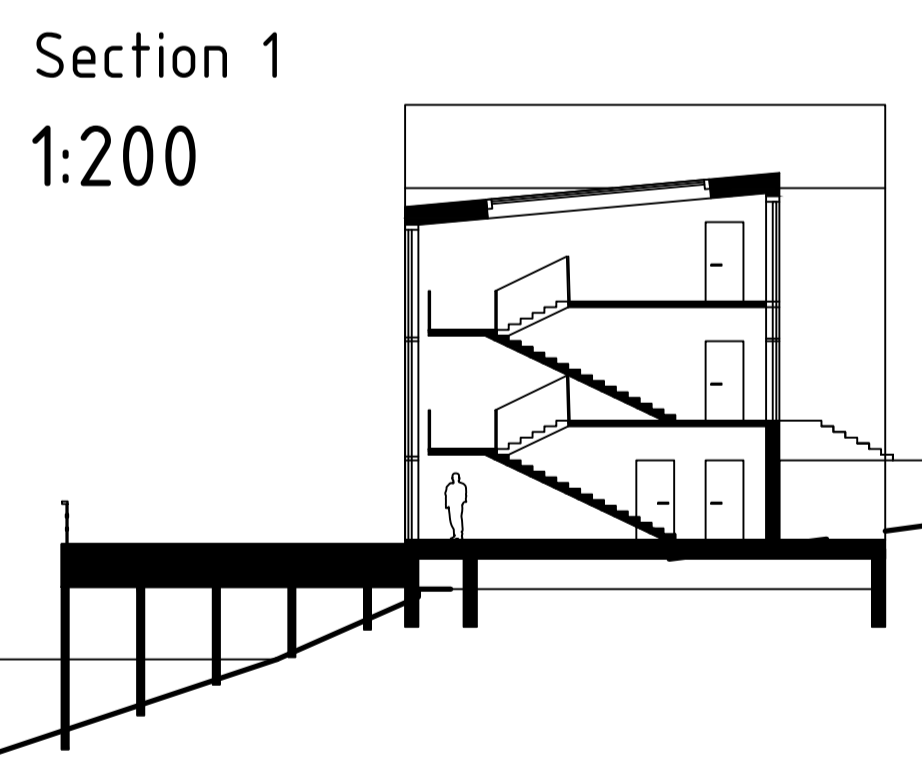


Majakkakylä





Majakkakylä



Usable Floor Area: 1,688 m²
Gross Floor Area: 3,240 m²

Exterior Facade 1:200

