



ADDIS ABABA UNIVERSITY
SCHOOL OF BUILT ENVIRONMENT
DEPARTMENT OF ARCHITECTURE
INS AMANUEL SHEFERAW



KARA KORE ADDICTION REHABILITATION CENTER

JOBLESS UNUTILIZED SPACES CRIME
ADDICTION

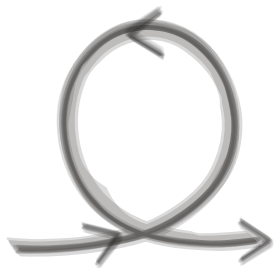
This project proposes a **REHABILITATION CENTER** designed as a linear ascent of refinement. Situated on a **800** sq.mt. site, the architecture functions as a spatial metaphor for the journey from addiction to autonomy. The main idea behind the design of the Kara Kore Rehab

Center was to create a space that empowers youth by lifting them out of addiction and the unemployment caused by it. The building serves as a savior, treating and recovering patients while also providing vocational training. The rehab center addresses both inpatients and outpatients simultaneously.

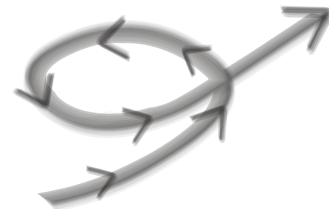
CONCEPT: TRANSITION TOWARDS LIGHT

FROM THE DARK AND NARROW STATE TO A BRIGHT AND WIDE STATUS.

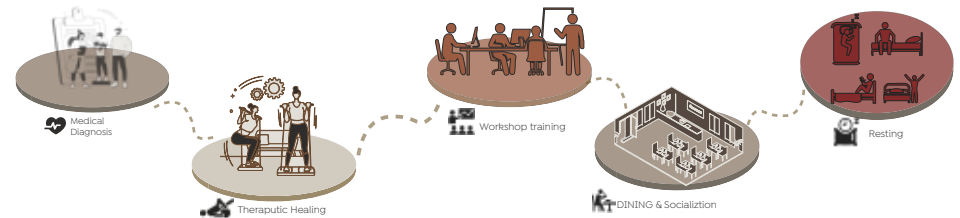
The concept is centered on shifting the youth from the life altered by addiction into a bright and socially integrated life by recovering from the addiction.



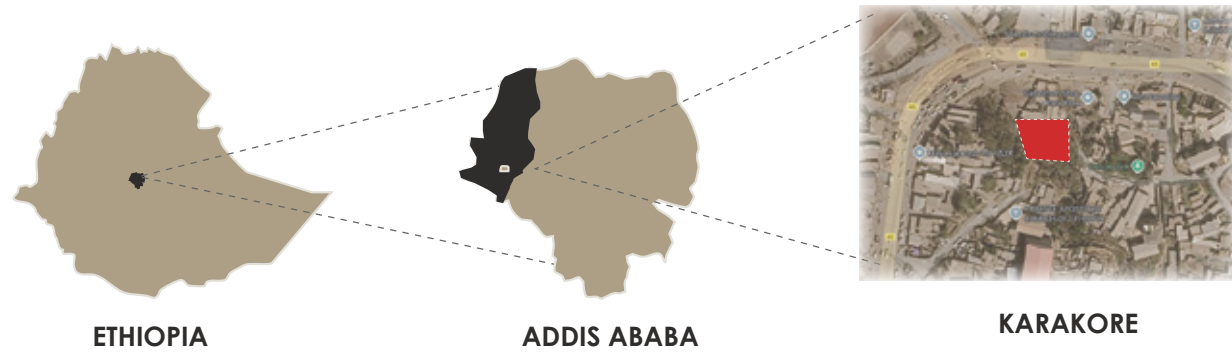
A Rehab center as recycling process but has different starting and end point.



The Healing process as a growing process towards a goal

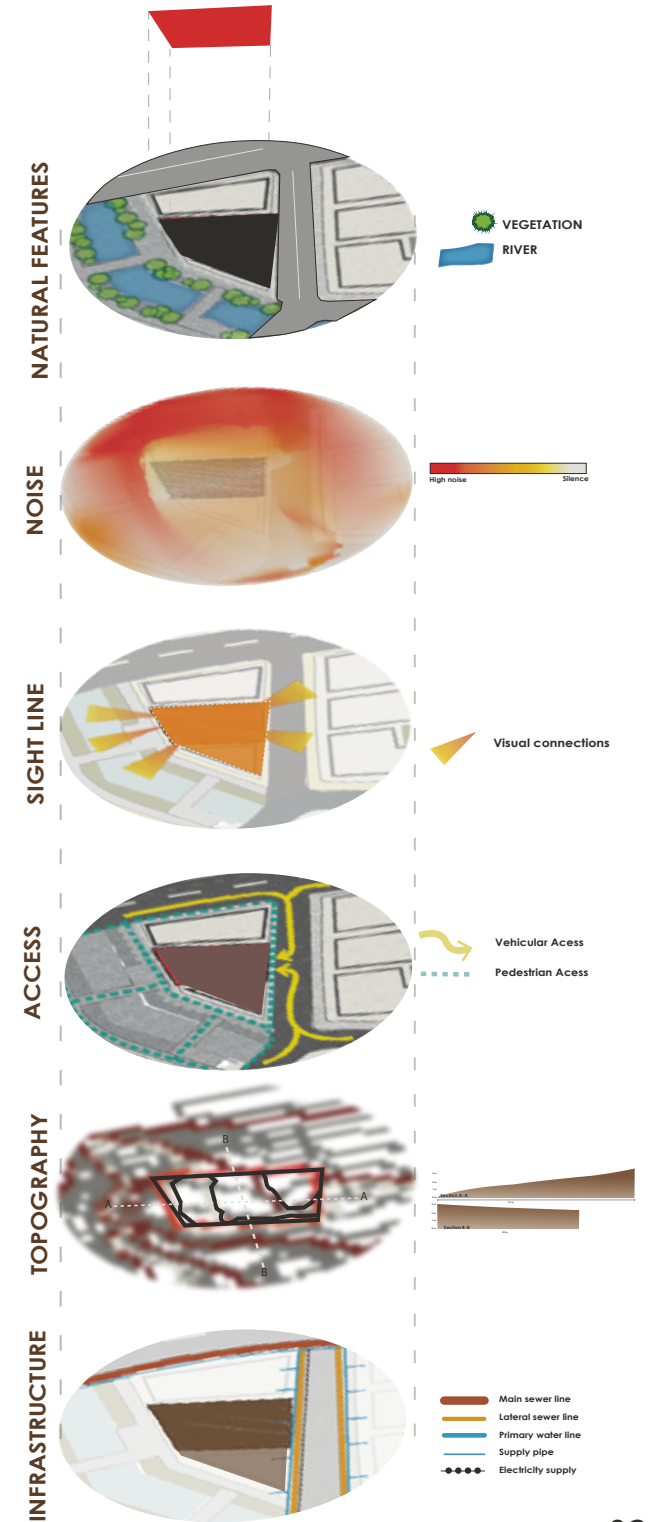


SITE ANALYSIS



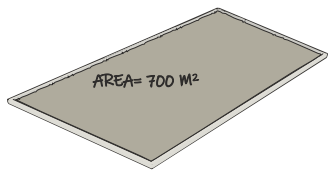
SITE SELECTION JUSTIFICATION

1. THE SITE IS EASILY ACCESSIBLE USING VEHICLES OR WALKING.
2. THE RIVER SIDE CAN BE A POTENTIAL TO BE USED AS AN ECOTHERAPY BY CONNECTING VISUALLY WITH THE SITE.
3. THE SITE IS FOUND IN A PLACE SECLUDED FROM THE PUBLIC DISTACTION AND A QUIETER SPACE FOR HEALING.

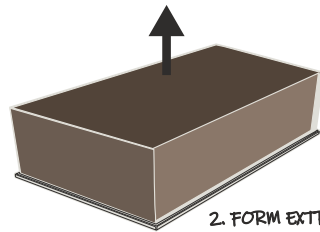


The design is structured into three distinct stages: **The Collection**, entry phase where the individual is stabilized in a grounded, protective environment; **The Transformation**, a central "knot" where medical, social, and vocational healing occur simultaneously; and **The Refined**, where the patient emerges into a high-altitude, light-filled sanctuary. The building physically manifests the psychological shift from a dark, narrow existence to a bright, resilient life.

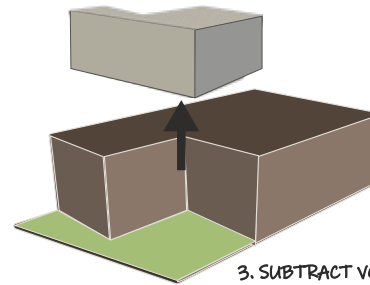
FORM DEVELOPMENT



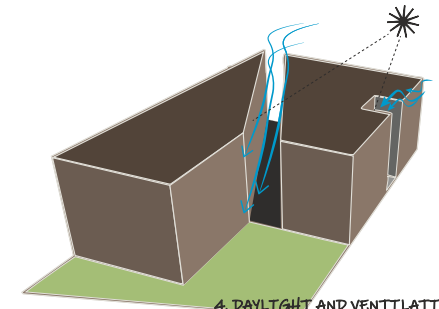
1. SITE



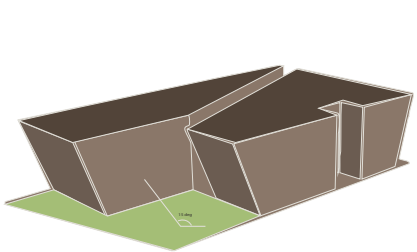
2. FORM EXTRUSION
Extrude overall footprint to create the basic built mass overall volume



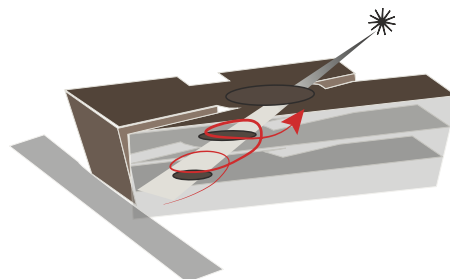
3. SUBTRACT VOLUME
Extract volume for implementing an outdoor 30% softscape of total area.



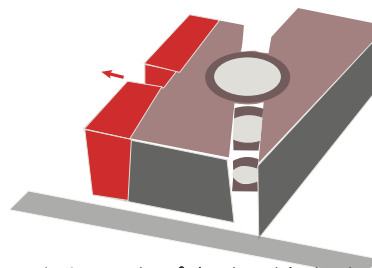
4. DAYLIGHT AND VENTILATION
A void is carved out to introduce daylight due the site is blindsided on two sides of its perimeter and also acts as a main entrance from main street



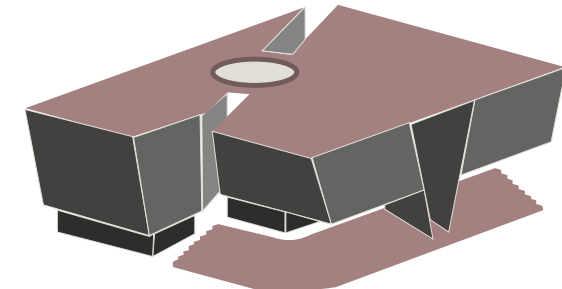
5. SILANTED WALLS
Slight inclination to walls, narrow at the base wide at the top to indicate the transition towards a wider/bright state



6. CIRCULATION
CIRCULAR OPENDOWNS TO ALLOW LIGHT AND GUIDE THE CIRCULATION

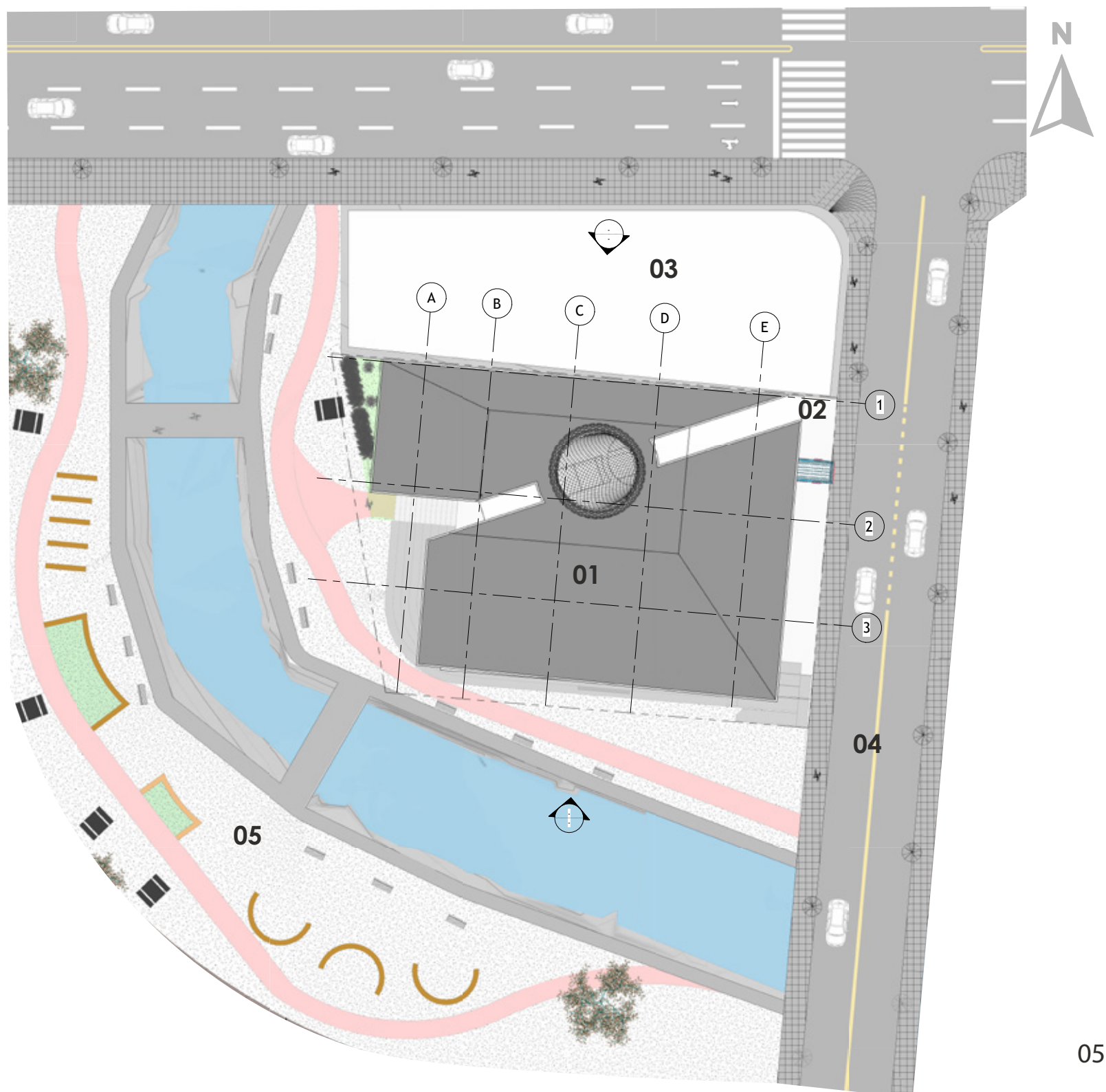


7. Integration of the site with the river
Extend blind side to integrate with the natural features



8. FINAL MASSING

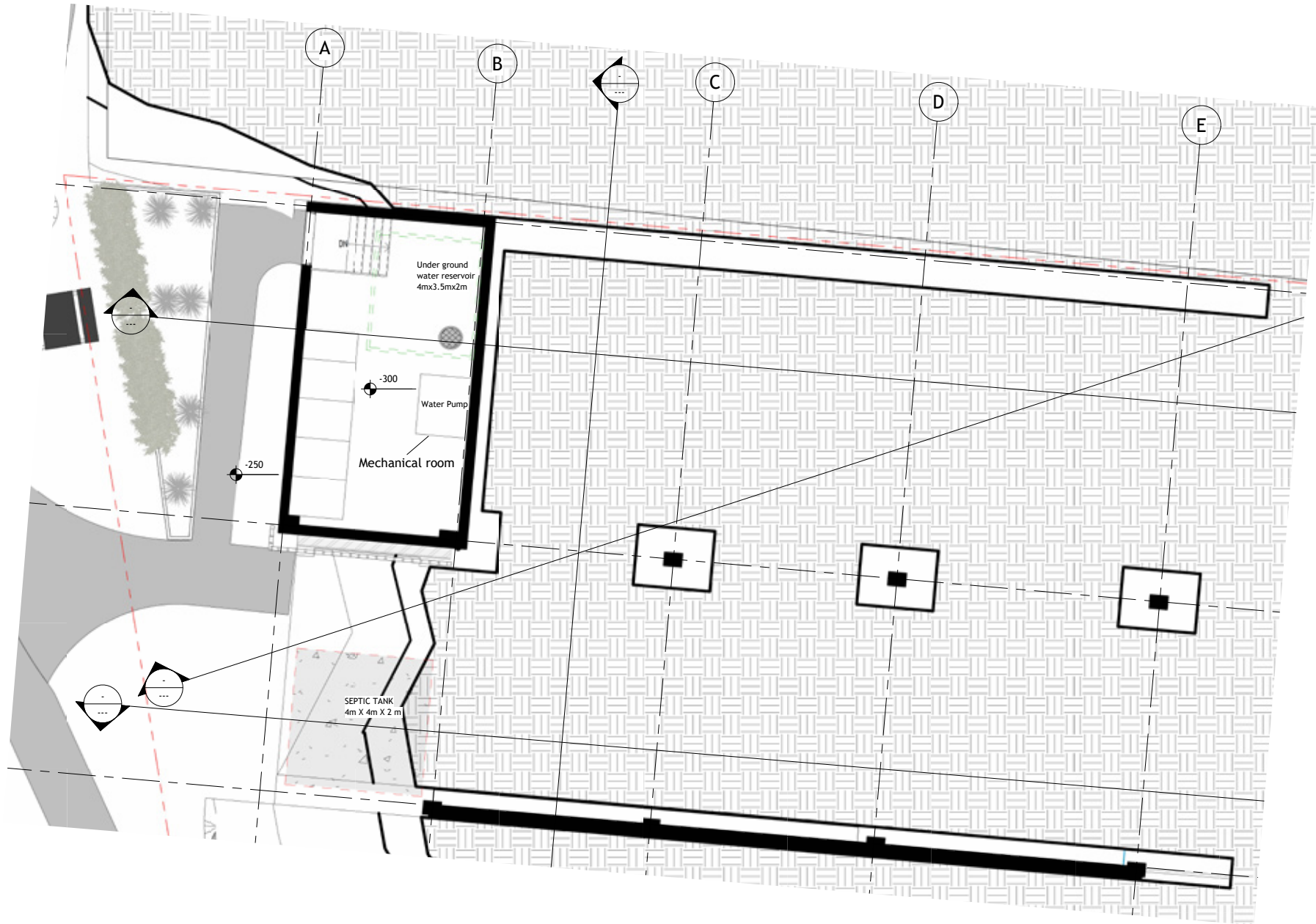
SITE PLAN



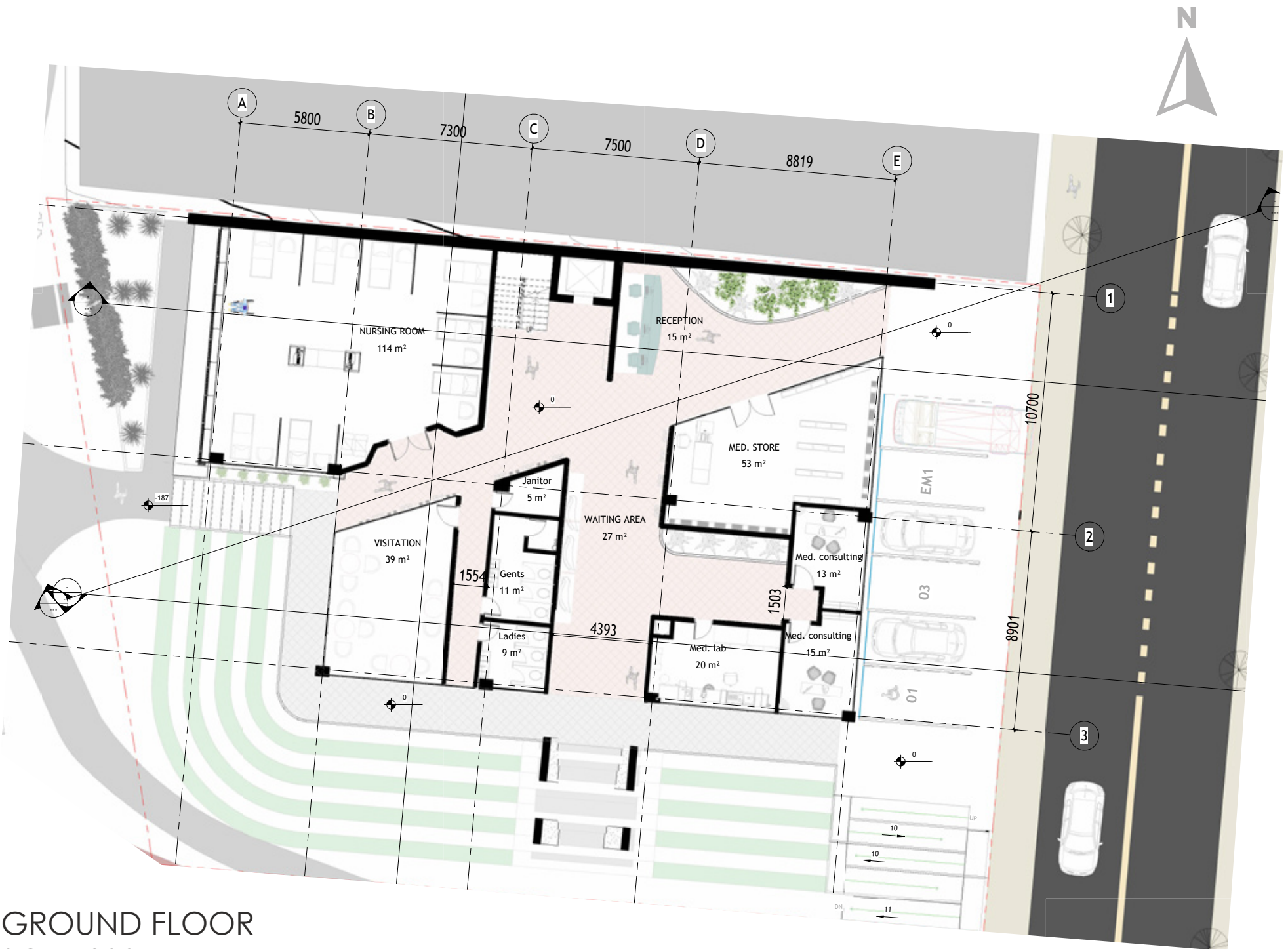
LEGEND

1. MAIN BUILDING
2. MAIN ENTRANCE
3. NEIGHBOUR BUILDING
4. MAIN ROAD
5. RIVERSIDE PARK

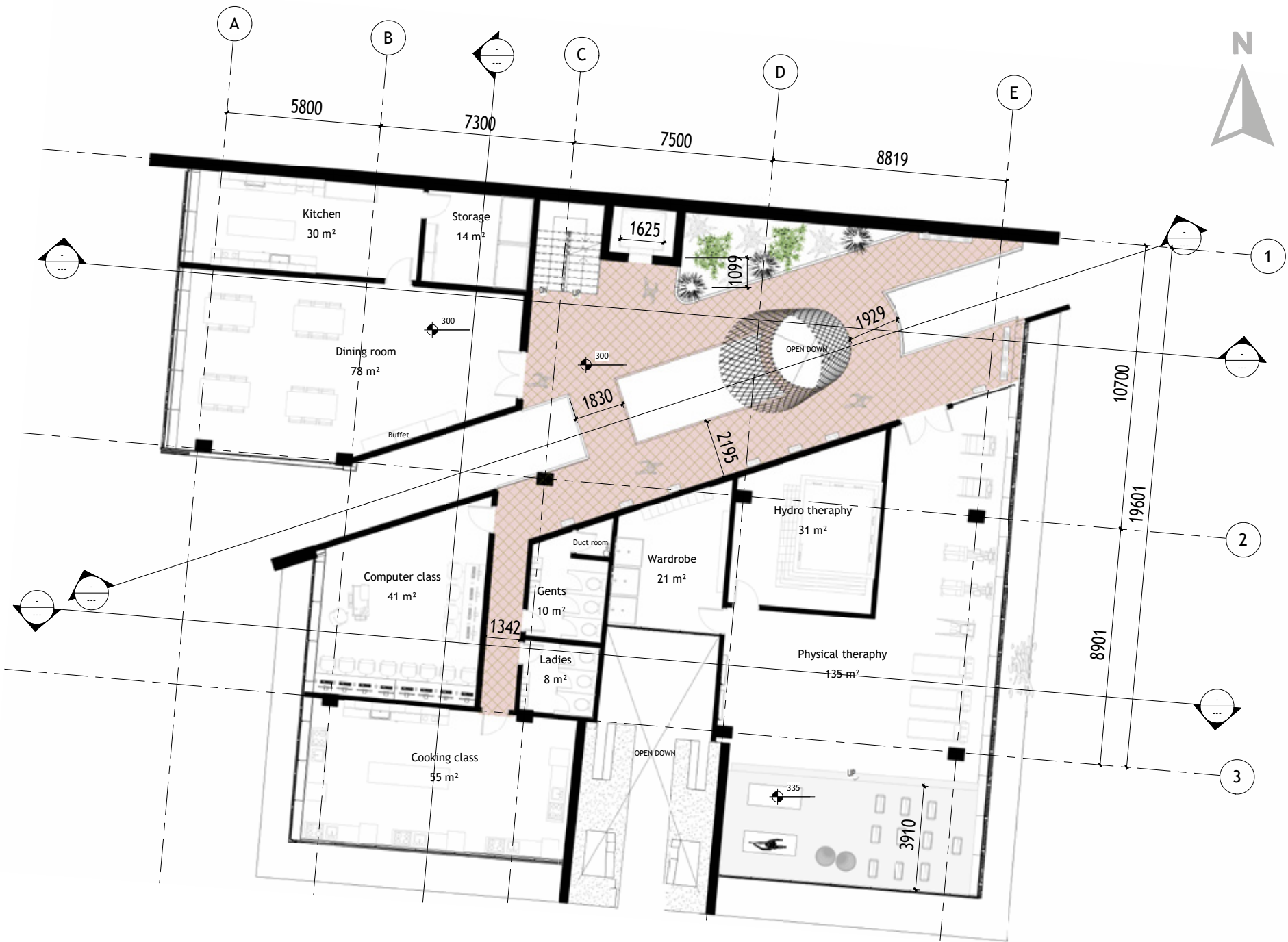
FLOOR PLANS



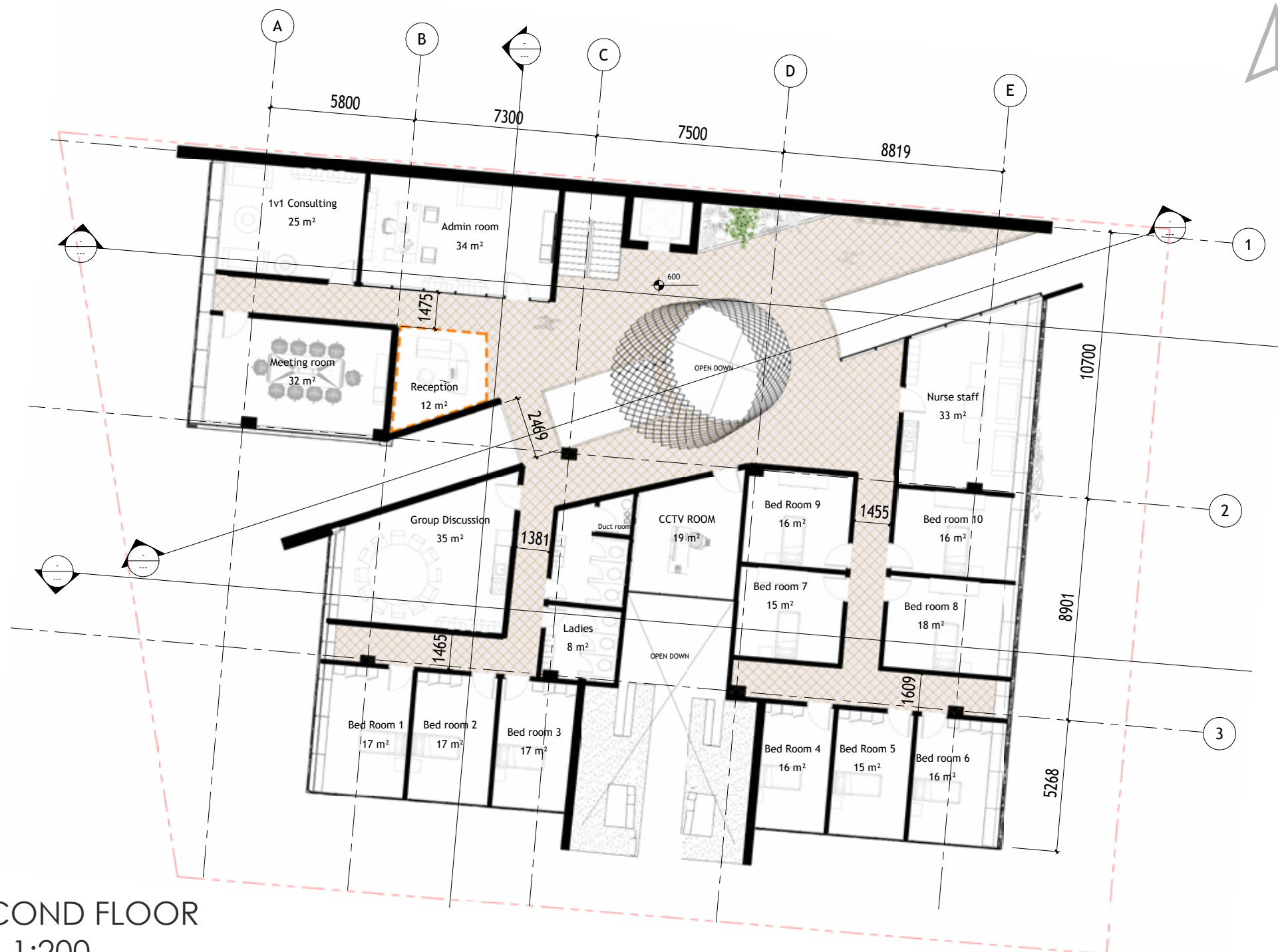
SEMI BASEMENT FLOOR
SC: 1:200



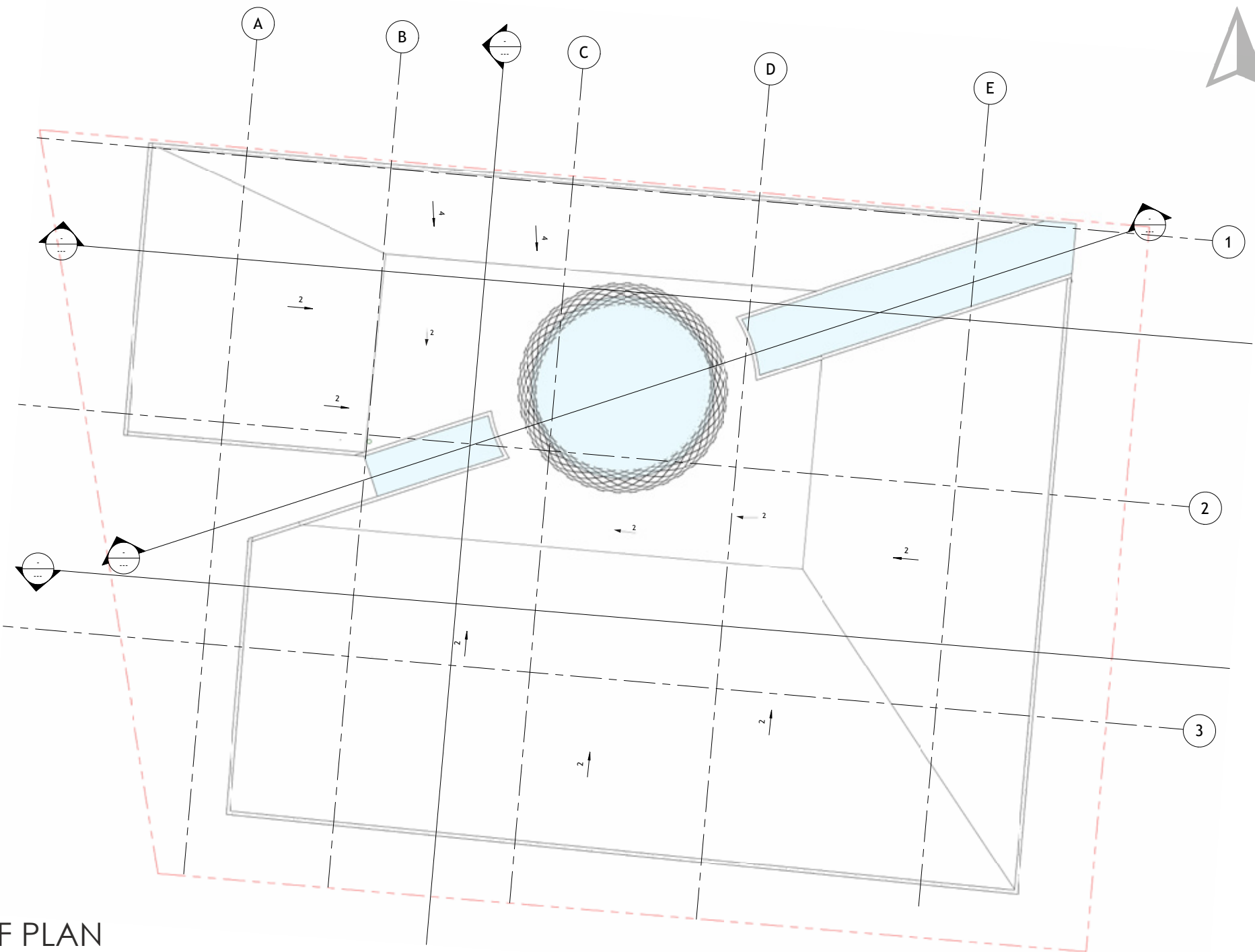
GROUND FLOOR
SC. 1:200



FIRST FLOOR
SC. 1:200

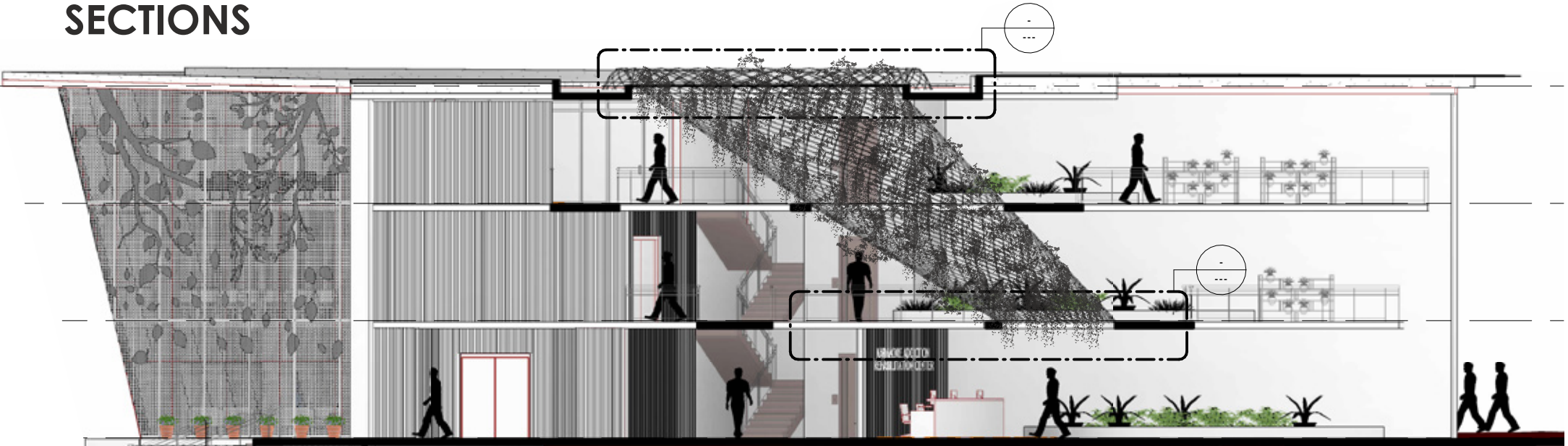


SECOND FLOOR
SC. 1:200



ROOF PLAN
SC. 1:200

SECTIONS



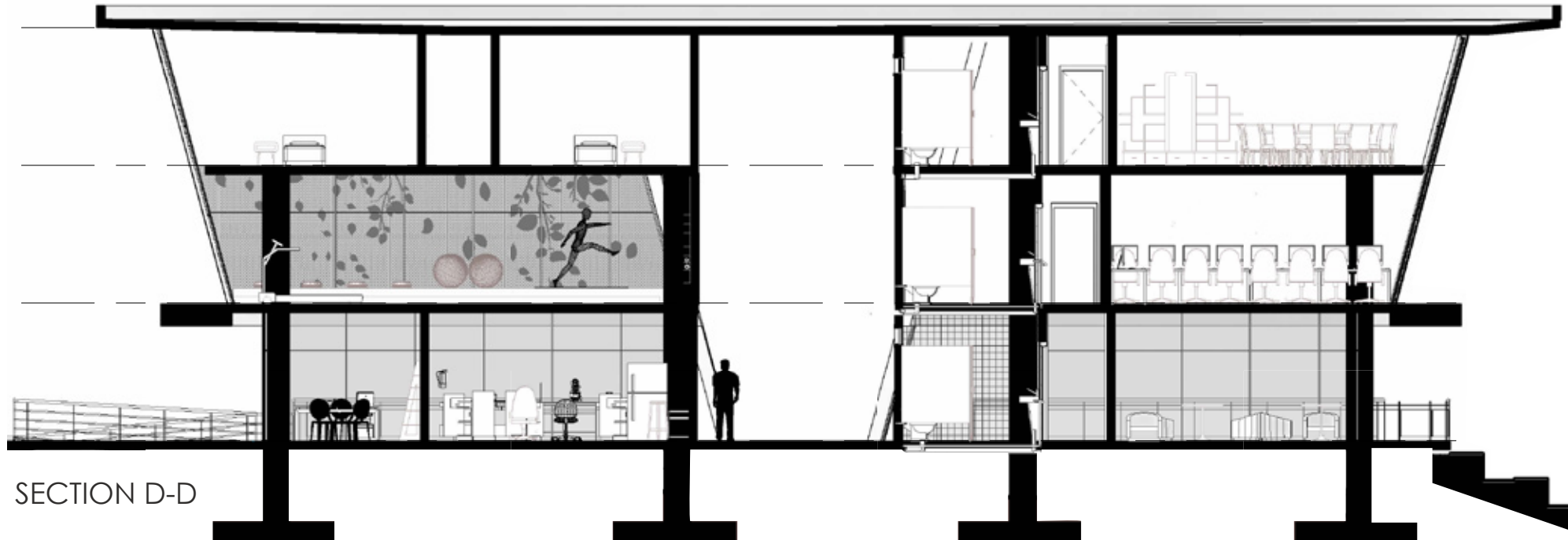
SECTION A-A



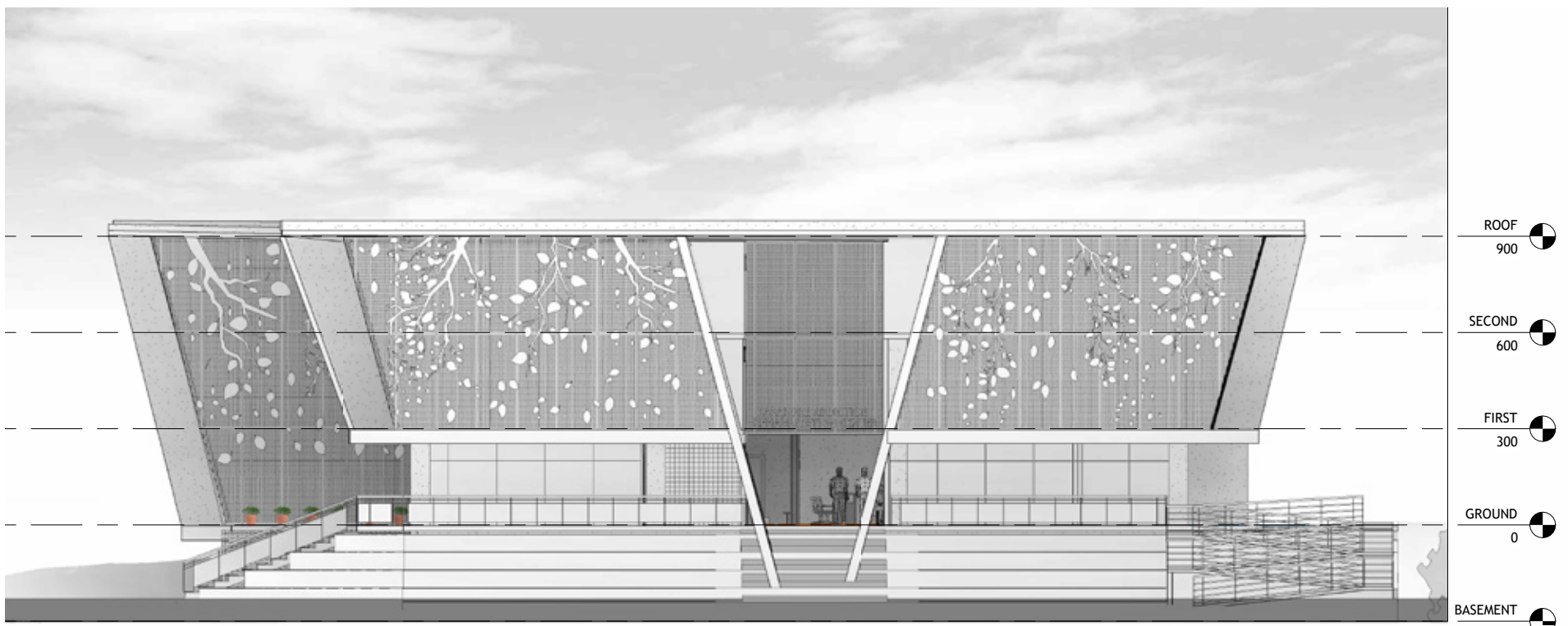
SECTION B-B



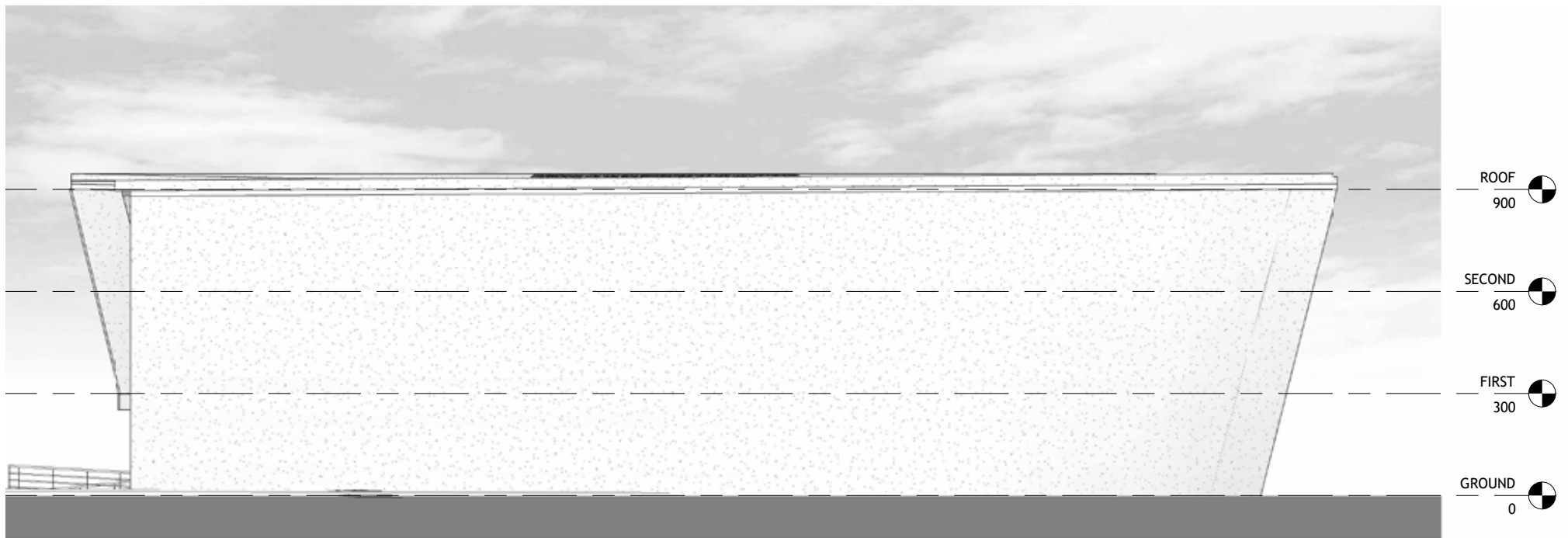
SECTION C-C



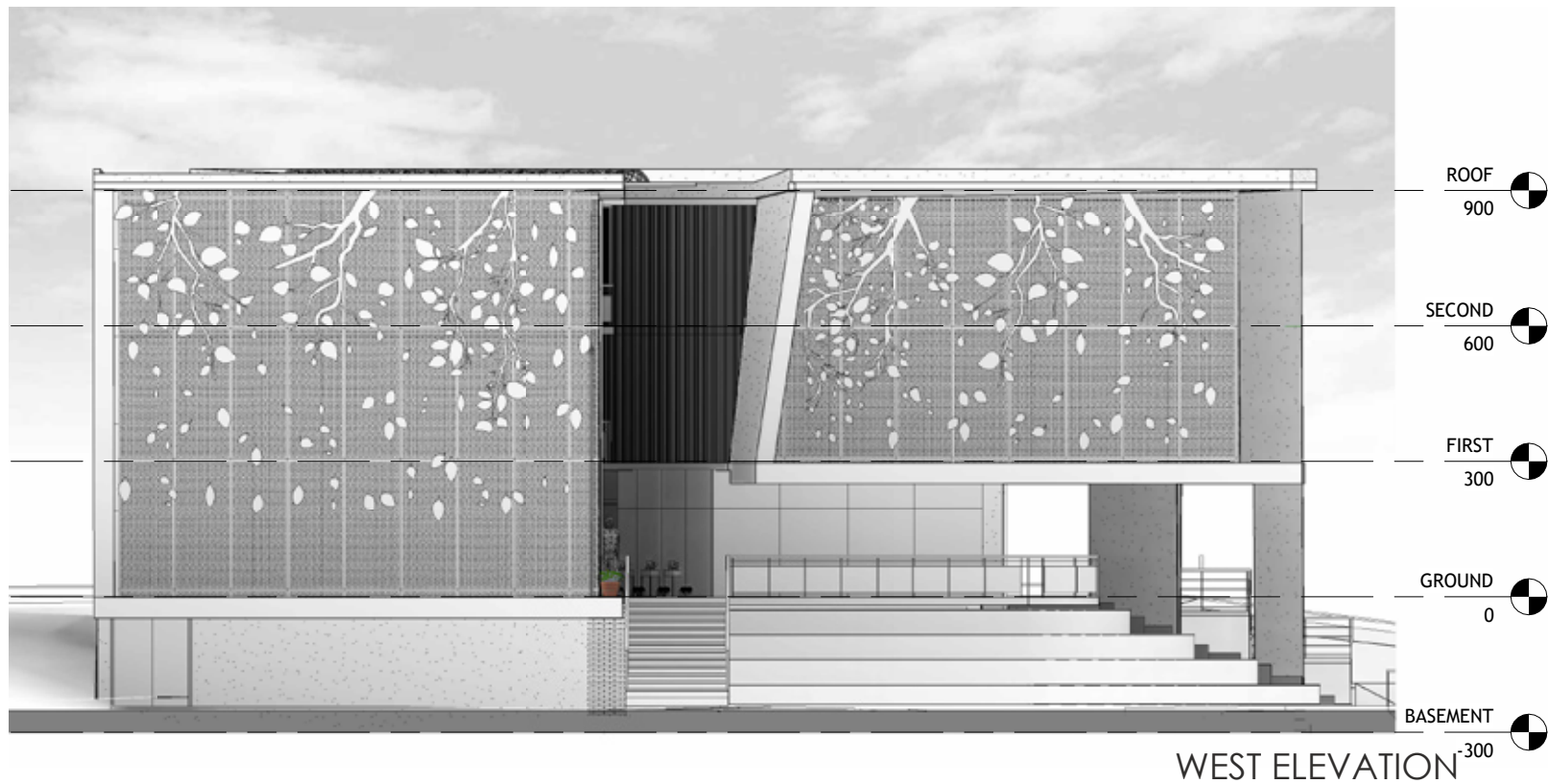
SECTION D-D



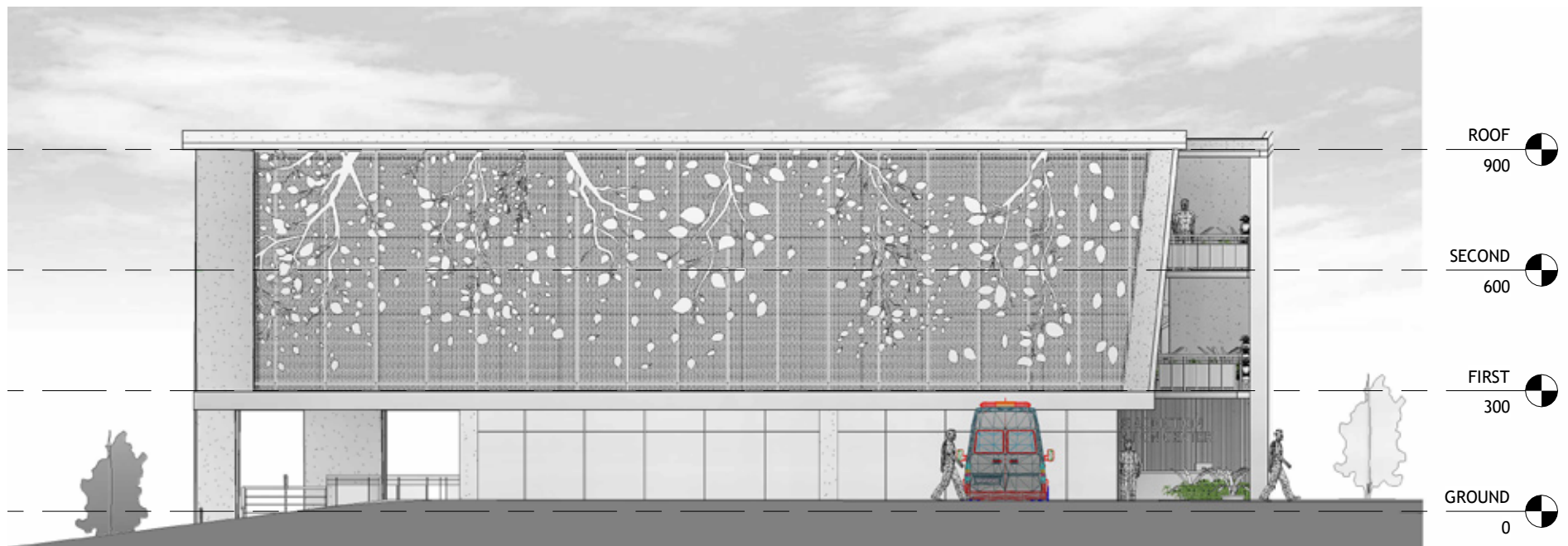
SOUTH ELEVATION



NORTH ELEVATION



WEST ELEVATION



EAST ELEVATION

STRUCTURAL DETAILS

Post tensioned concrete

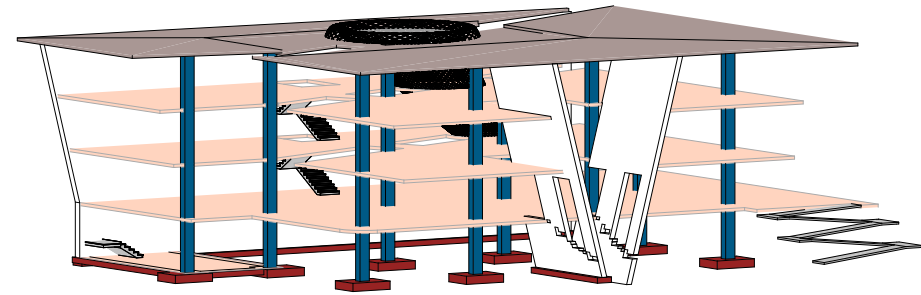
POST TENSION

LONG SPAN

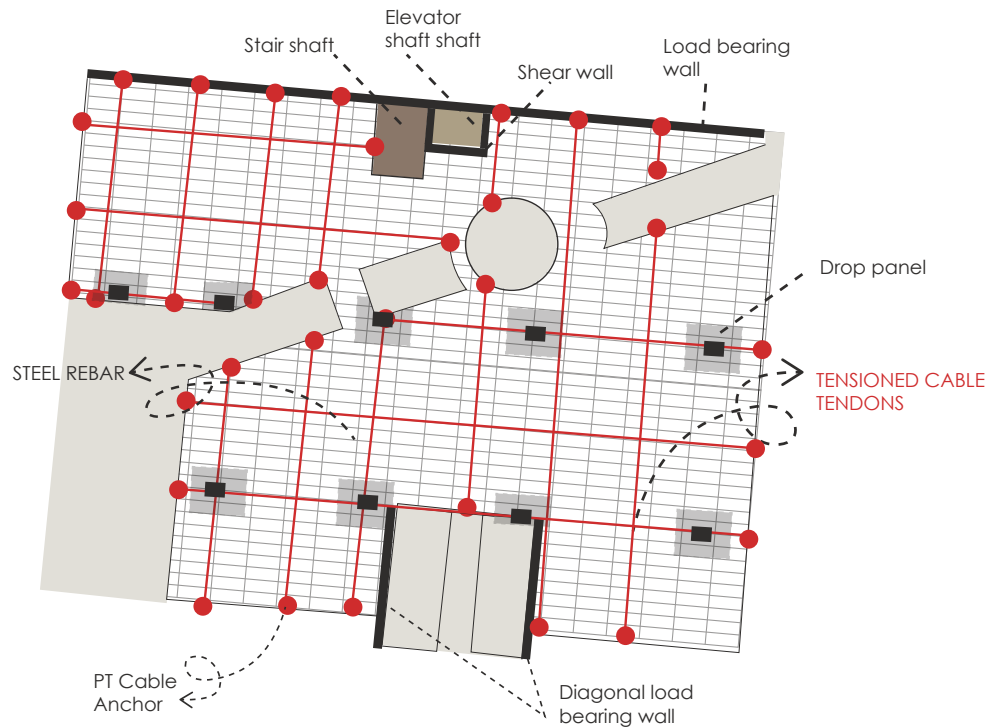
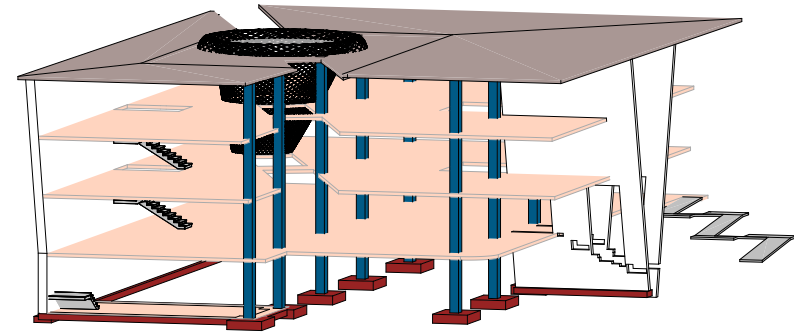
CABLE vs REBAR

LIGHT WEIGHT vs COLUMNS

FLAT FINISH vs BEAM



Slabs Column Footing Stair Roof Shear wall



SLABS

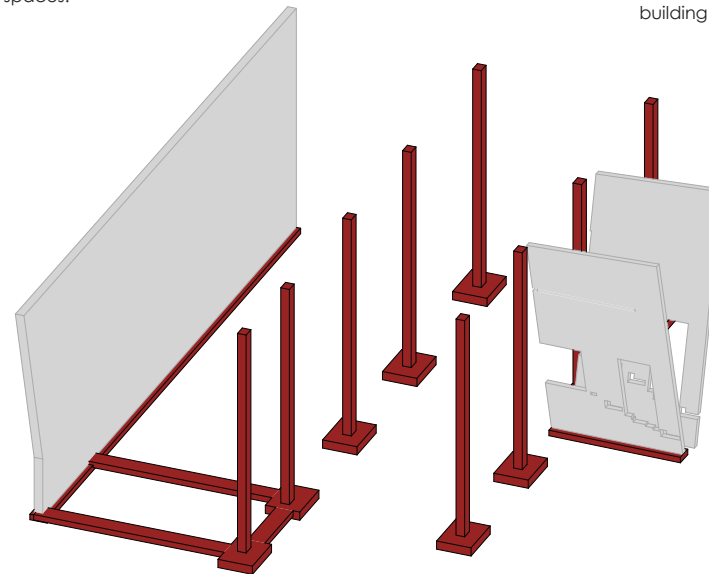
Posttensioned Slabs are thinner which require small number of columns and open interior spaces.

COLUMNS

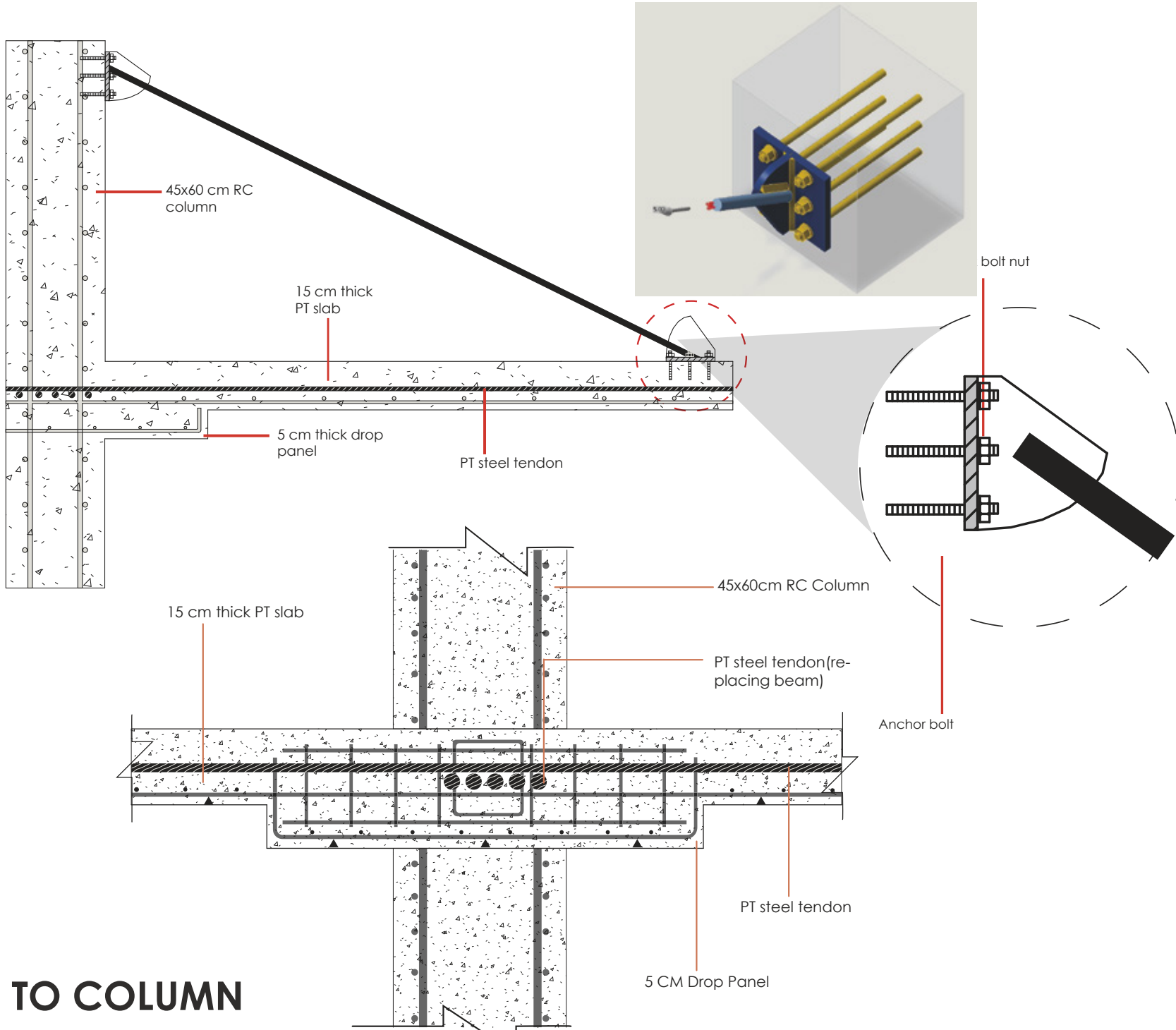
45 cm x 60 cm sized columns with a column span of 7m -10m.

Load bearing wall

Shear wall 45 cm thickness with imbeded columns which acts as a structure and facade of the building

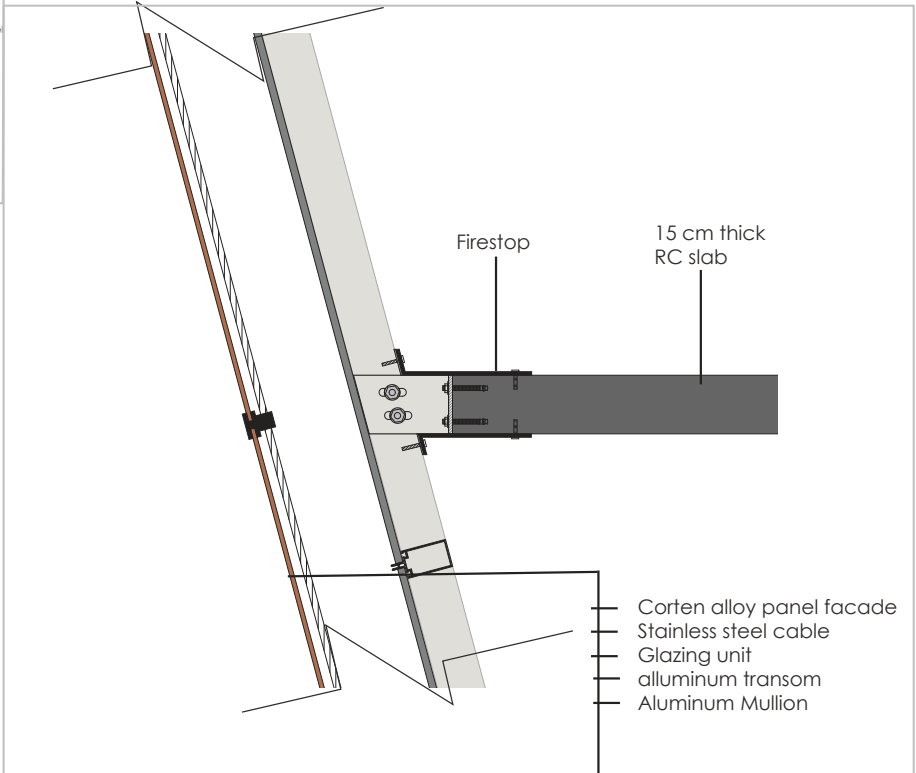
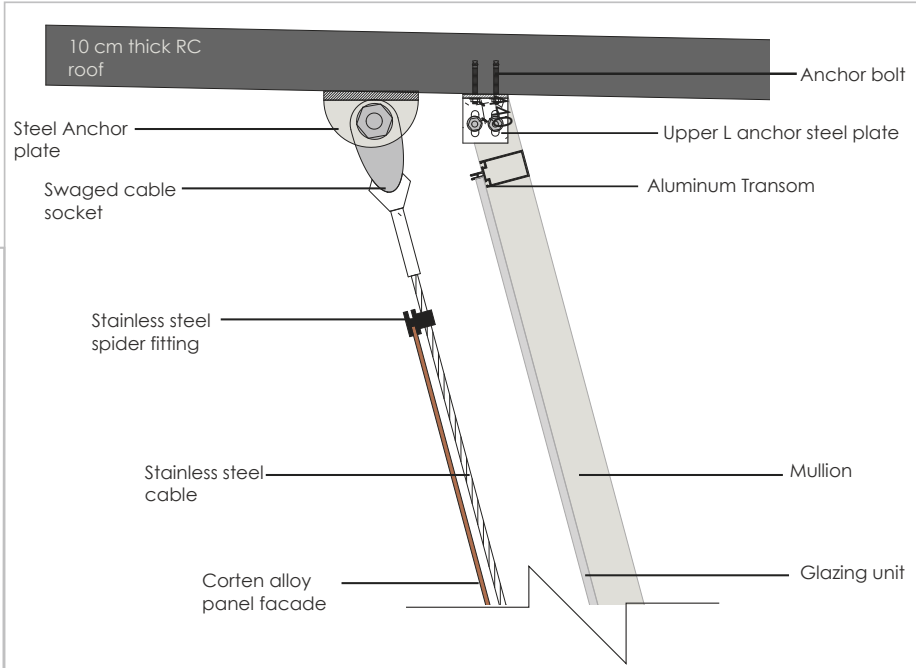
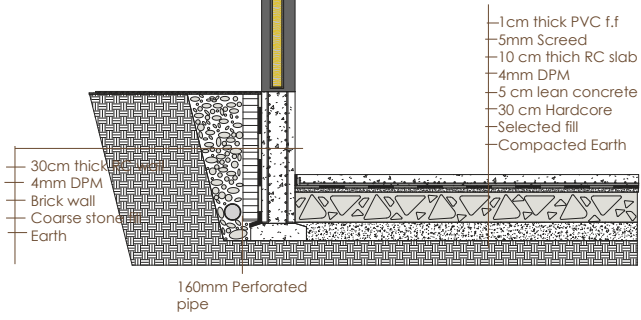
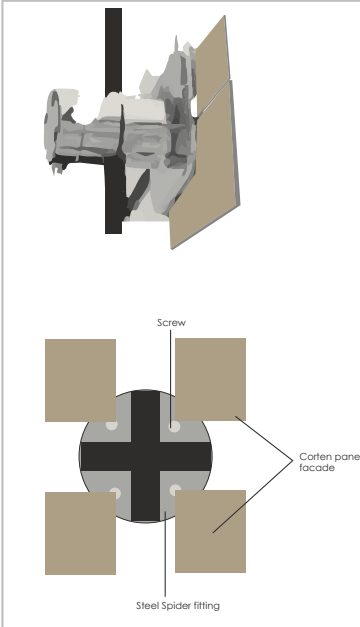
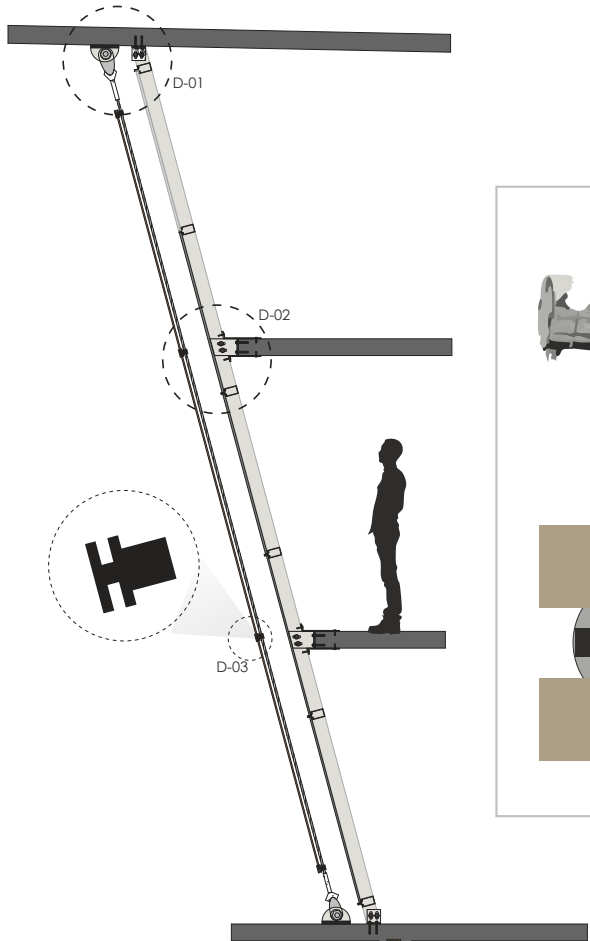


SUSPENDED FLOOR

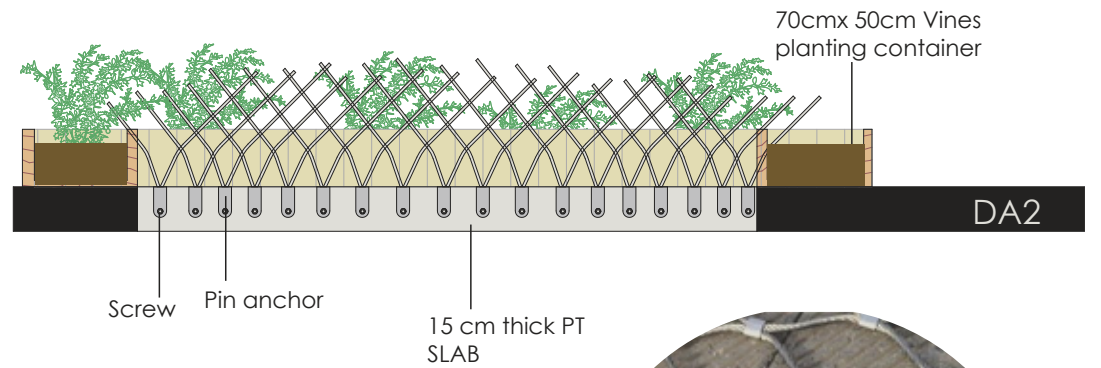
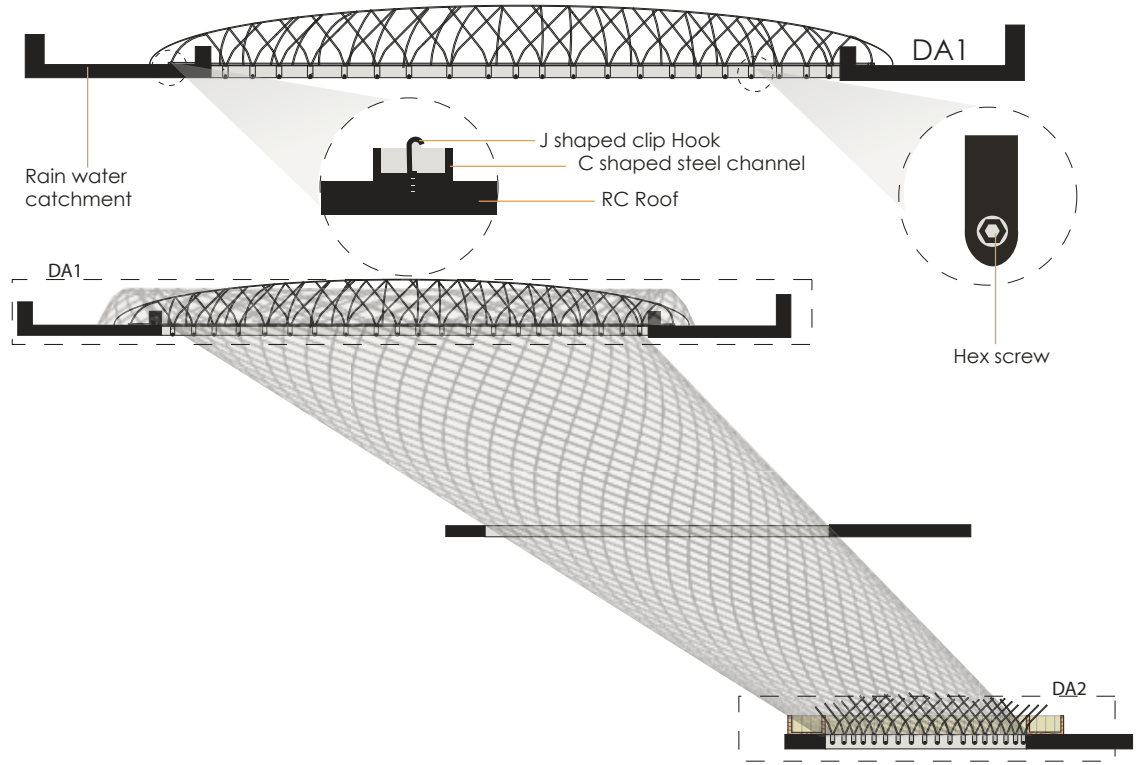


SLAB TO COLUMN

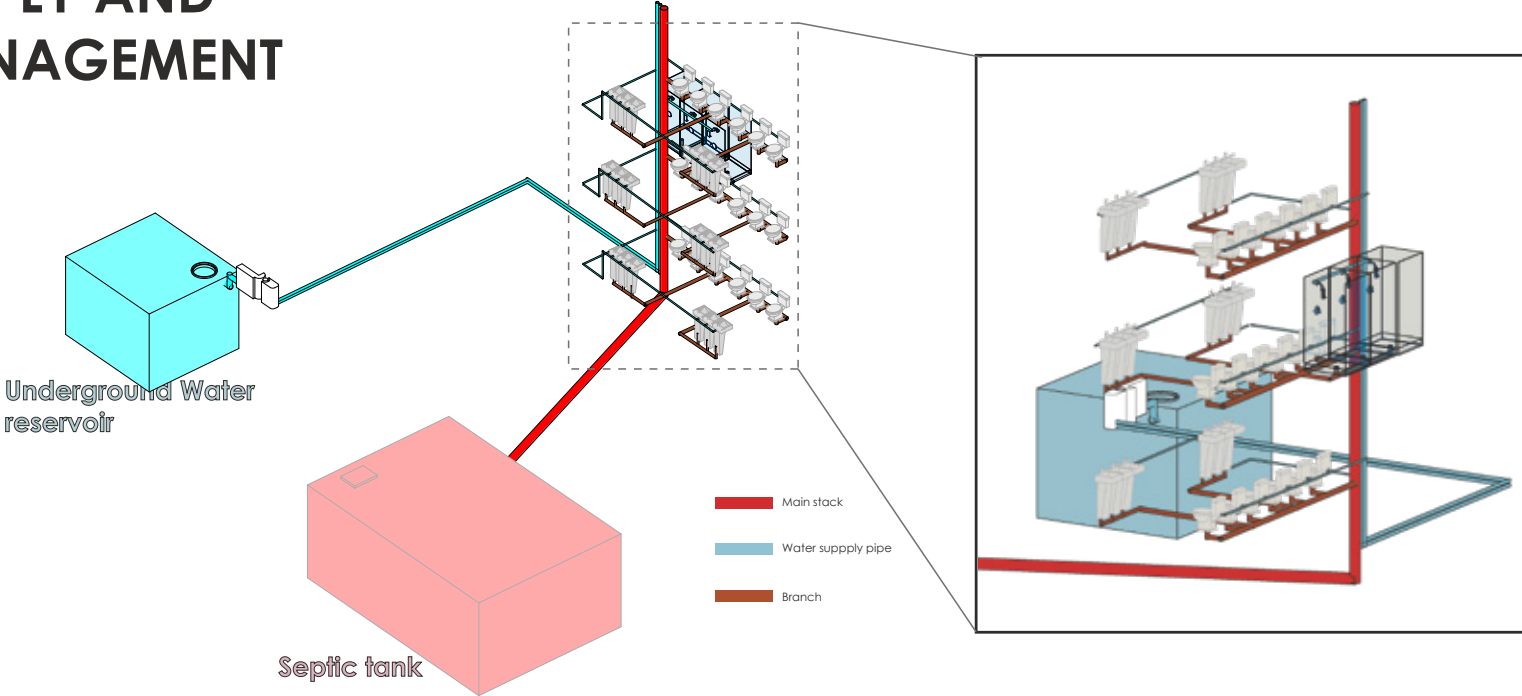
FACADE SECTION



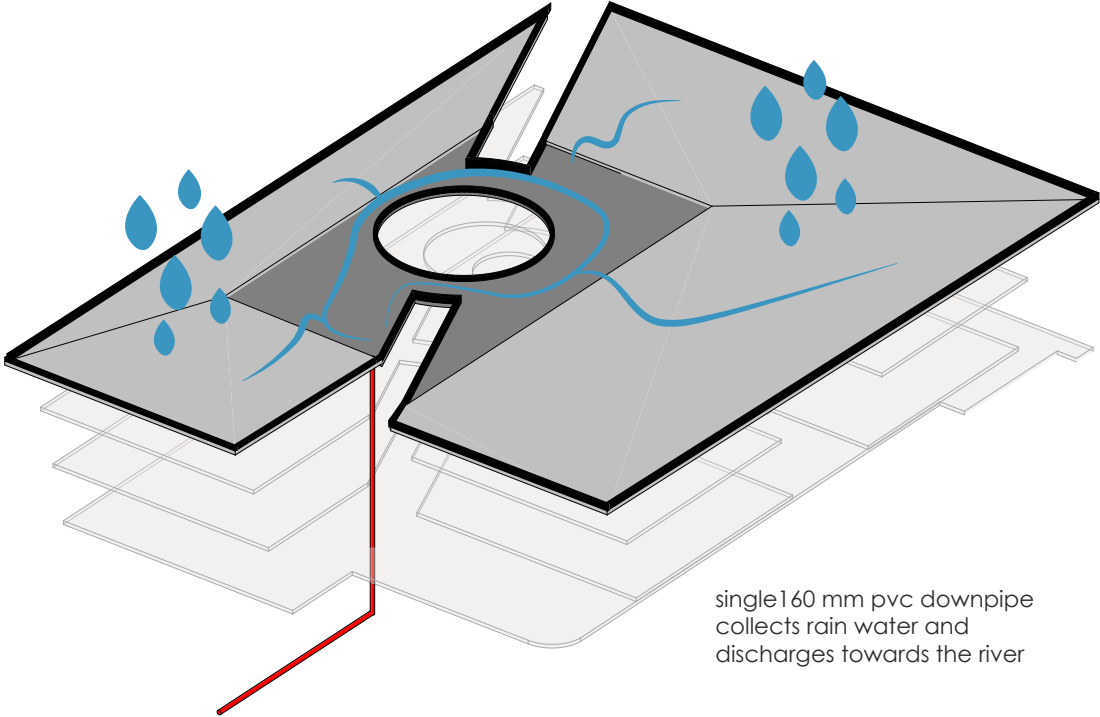
MESH TRELIIS DETAIL



WATER SUPPLY AND WASTE MANAGEMENT



RAIN WATER MANAGEMENT



single 160 mm pvc downpipe collects rain water and discharges towards the river

MATERIAL PALETTE



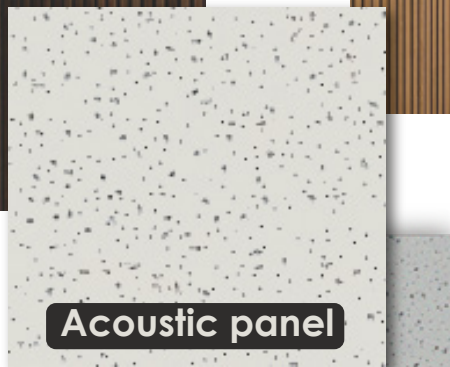
Facade

Durable, versatile and continuous polished concrete facade and Corten steel



Wall

Used at interior walls and corridors to blend with the organic qualities of wood with organic environment in the facility



Ceiling

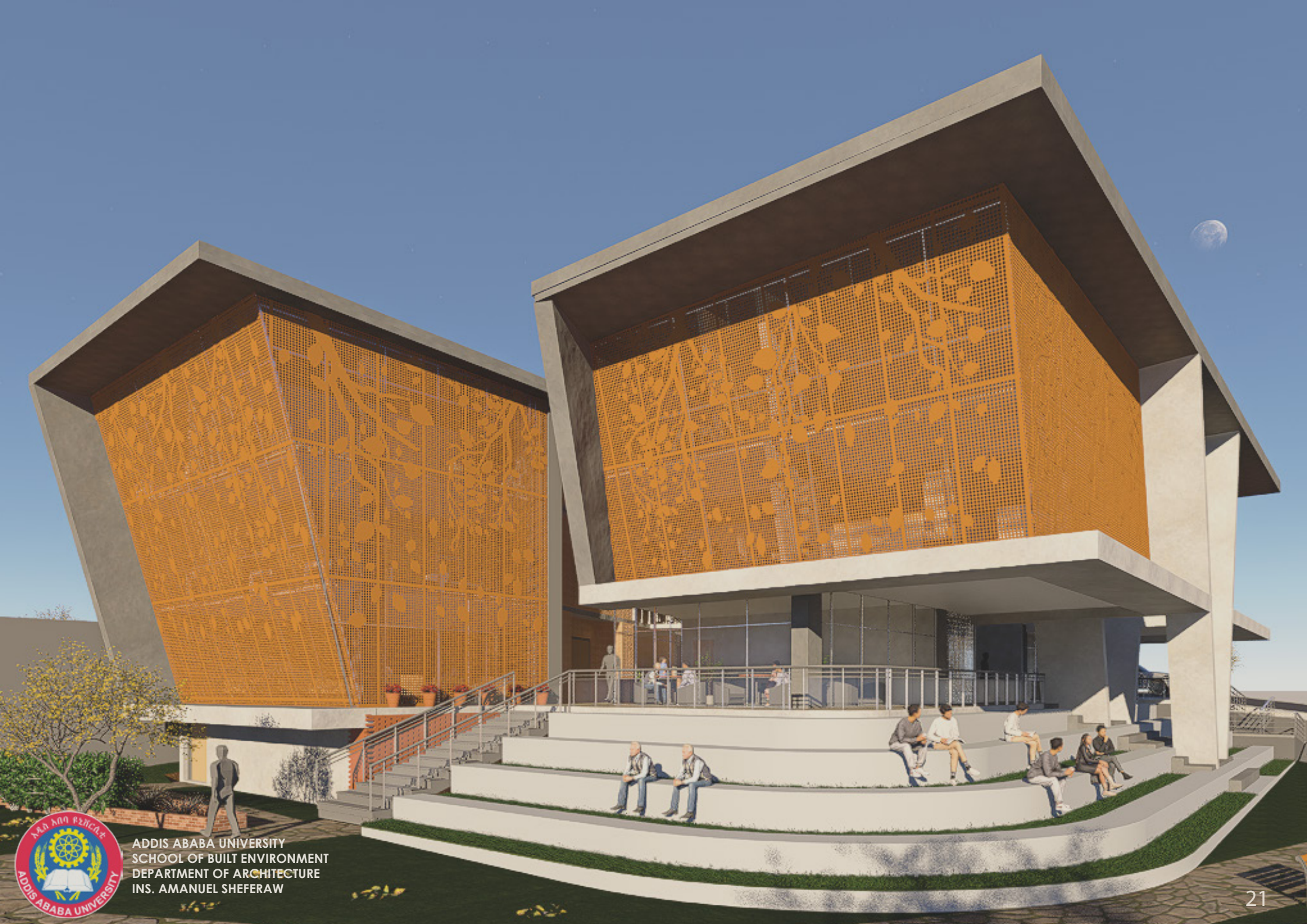
Prevent sound transfer by absorbing disturbances between floors



Rubber tile

Floors

Impact absorbing and user comfort and slip resistant walking surface



ADDIS ABABA UNIVERSITY
SCHOOL OF BUILT ENVIRONMENT
DEPARTMENT OF ARCHITECTURE
INS. AMANUEL SHEFERAW