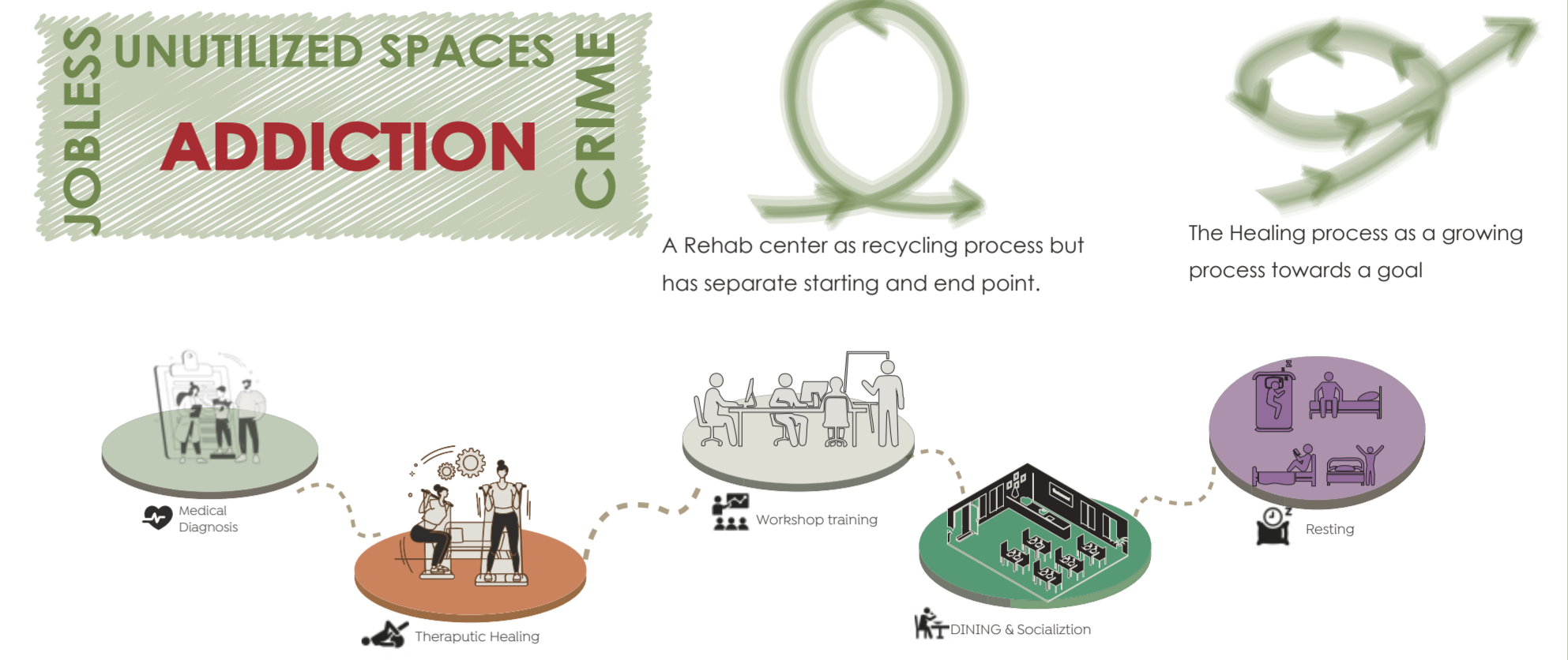


THE ASCENT

This project proposes a REHABILITATION CENTER designed as a linear ascent of refinement. Situated on a 800 sq.mt. site, the architecture functions as a spatial metaphor for the journey from addiction to autonomy. The core concept behind the design of the Kara Kore Rehabilitation Center is to create a space that empowers youth by lifting them out of addiction and the resulting unemployment. The building serves as a sanctuary, offering treatment, recovery, and vocational training. The center is situated near the Repi River, leveraging the natural potential of the riverfront and surrounding greenery as a therapeutic tool. It reclaims and utilizes spaces along the riverbanks formerly used by local youth.

CONCEPT: TRANSITION TOWARDS LIGHT

STEPPING OUT OF THE DARK, INTO THE BRIGHT STATUS OF YOUTHS



The design is centered on creating a therapeutic environment that balances treatment, recovery, social interaction, and privacy. The facility supports patients through different stages of rehabilitation by providing spaces for medical care, counseling, therapy, skill development, recreation, and residential living. "A patient-centered rehabilitation environment that integrates medical treatment, psychological support, skill development, and social interaction within a carefully structured privacy hierarchy."

