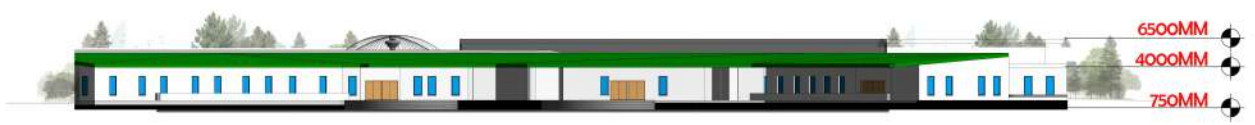


KEY PLAN - ADMIN

ADMIN FLOOR - FLOOR PLAN



SECTION - BB'



NORTH EAST - ELEVATION



CORRIDOR VIEW - 1



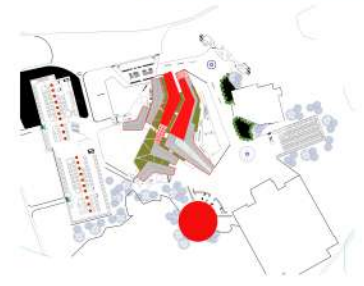
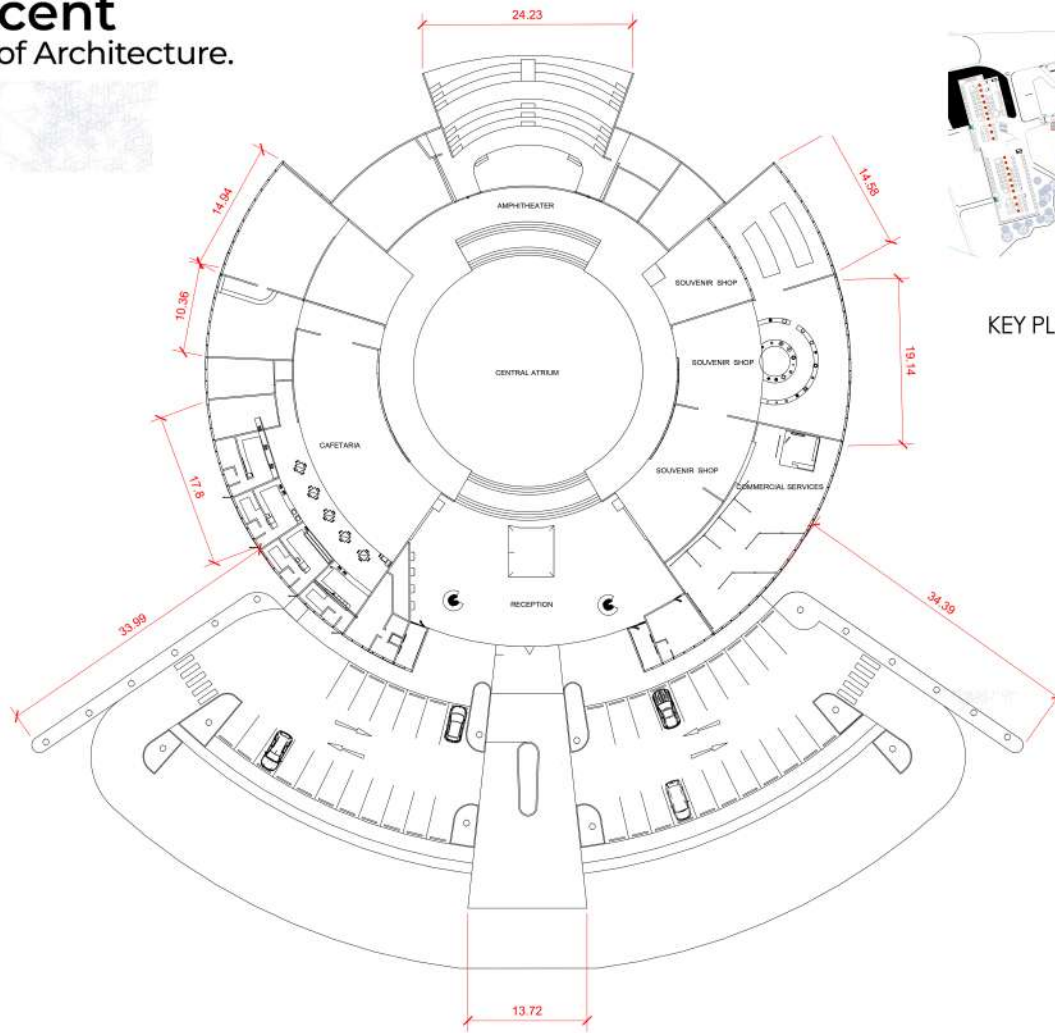
EXTERIOR VIEW - 2



DROP - OFF VIEW - 3



EXTERIOR VIEW - 4

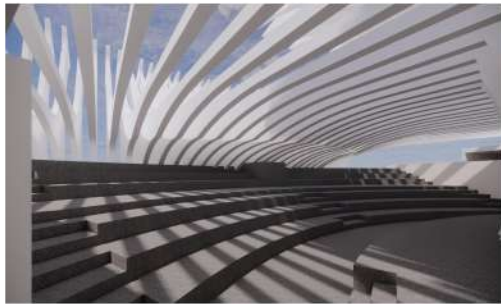


KEY PLAN - AMPHITHEATER

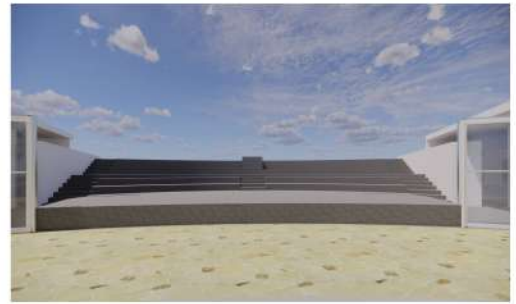
AMPHITHEATER - FLOOR PLAN



SECTION AA'



VIEW - 1



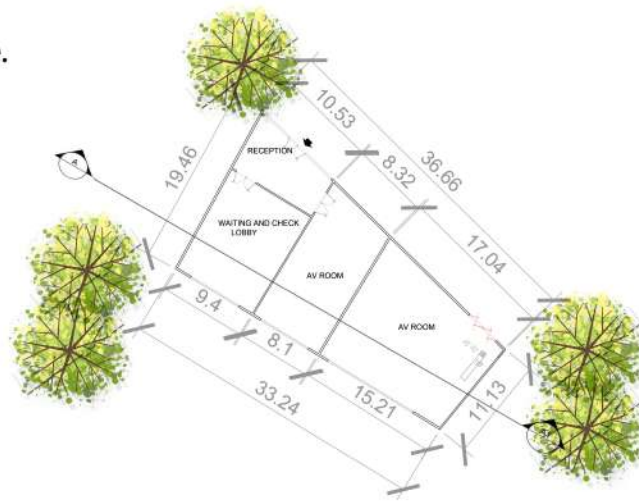
VIEW - 2



VIEW - 3



VIEW - 4



KEY PLAN - AV ROOM

AUDIO VISUAL ROOM - FLOOR PLAN



SECTION - CC'



SOUTH WEST - ELEVATION



AV ROOM CORRIDOR - 1



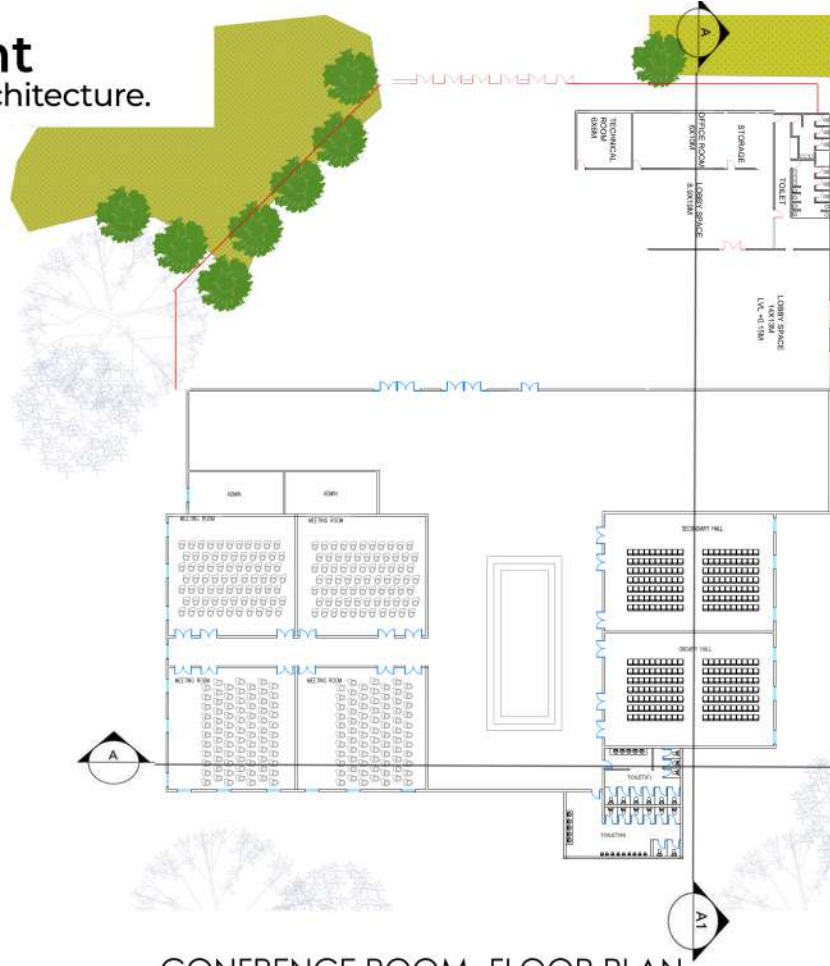
AUDIO VISUAL AREA VIEW - 2



EXTERIOR VIEW - 3

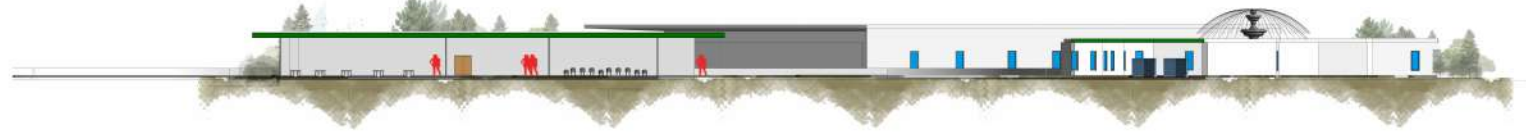


AUDIO ROOM VIEW - 4

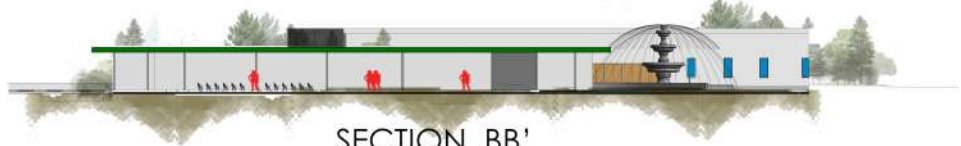


KEY PLAN - CLASS ROOM

CONFERENCE ROOM- FLOOR PLAN



SECTION AA'



SECTION BB'



EXTERIOR VIEW - 1



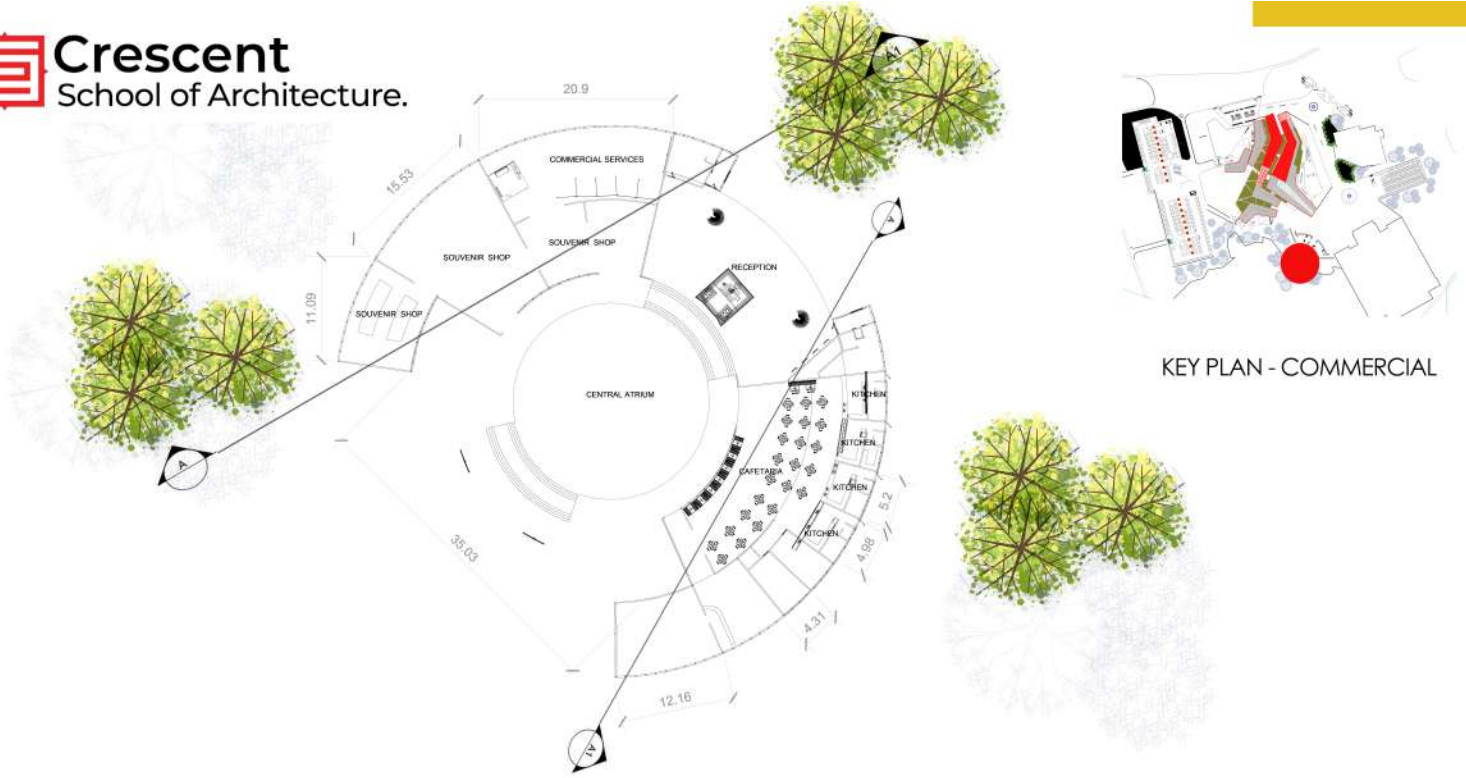
RECEPTION VIEW - 2



RECEPTION VIEW - 3



EXTERIOR VIEW - 4



KEY PLAN - COMMERCIAL

COMMERCIAL AREA - FLOOR PLAN



SECTION - BB'



NORTH EAST - ELEVATION



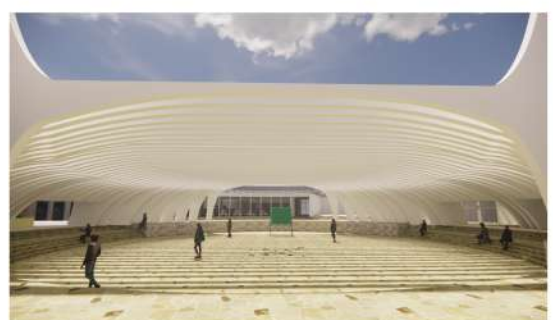
CORRIDOR VIEW - 1



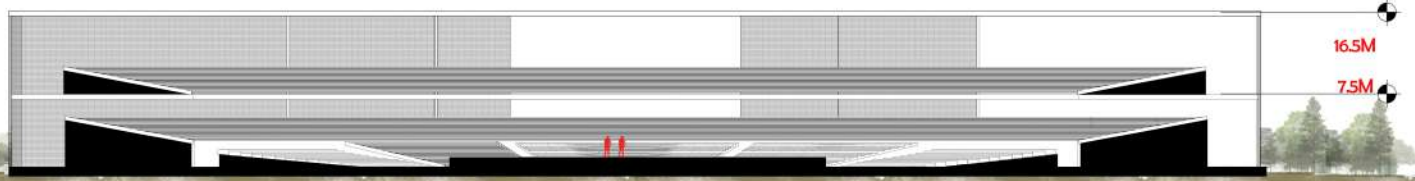
FOOD COUNTER VIEW - 2



EXTERIOR VIEW - 3



EXTERIOR VIEW - 4



SECTION AA'



SECTION BB'



EXTERIOUR VIEW - 1



SEATING VIEW - 2



SEATING VIEW - 3



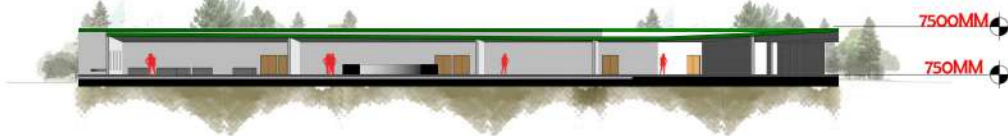
RECEPTION VIEW -4



KEY PLAN - GALLERY



GALLERY AREA - FLOOR PLAN



SECTION - BB'



NORTH EAST - ELEVATION



CORRIDOR VIEW - 1



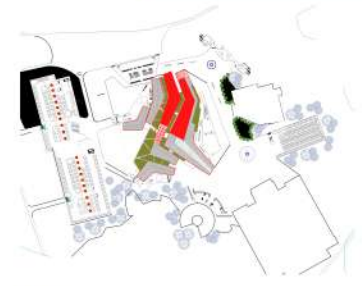
DISPLAY AREA VIEW - 2



DISPLAY AREA VIEW - 3



EXTERIOR VIEW - 4



KEY PLAN - ADMIN



GALLERY AREA - FLOOR PLAN



SECTION - BB'



NORTH EAST - ELEVATION



CORRIDOR VIEW - 1



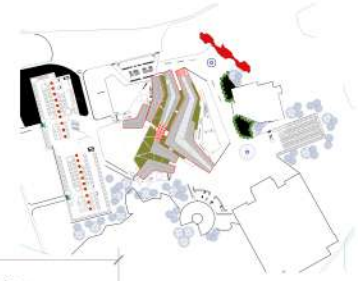
DISPLAY AREA VIEW - 2



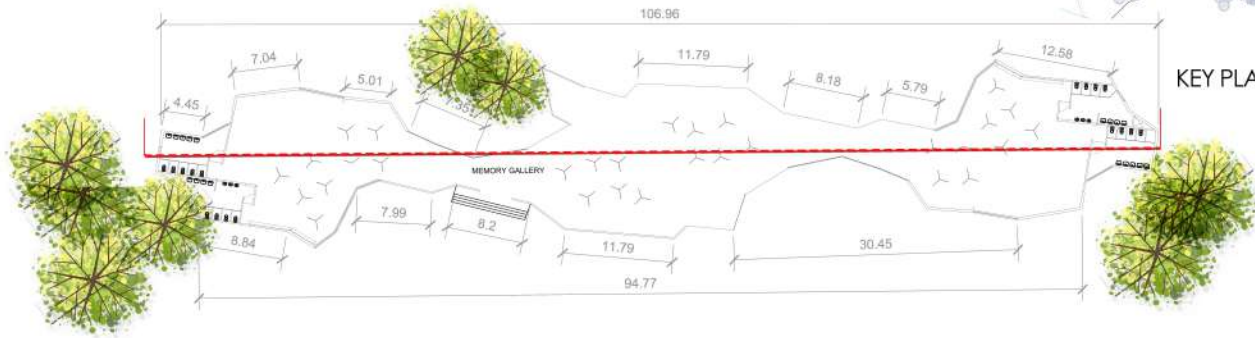
DISPLAY AREA VIEW - 3



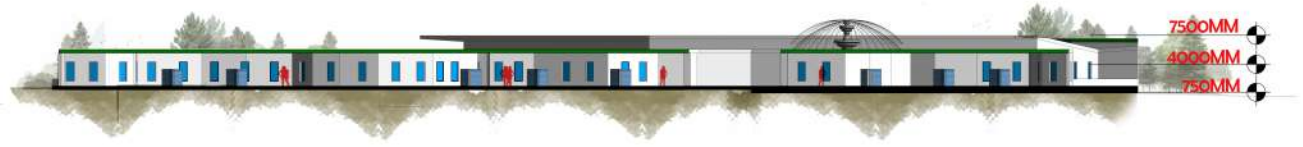
EXTERIOR VIEW - 4



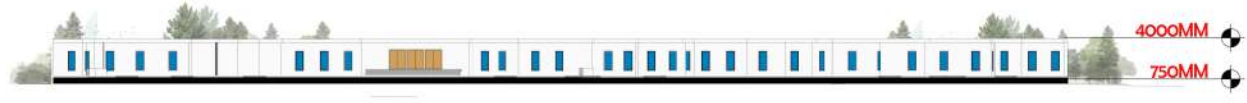
KEY PLAN - ADMIN



HISTORIC PAVILION FLOOR - FLOOR PLAN



SECTION - BB'



SOUTH EAST - ELEVATION



ARTIFACTS AREA - 1



DISPLAY AREA VIEW - 2



DISPLAY AREA VIEW - 3



EXTERIOR VIEW - 4



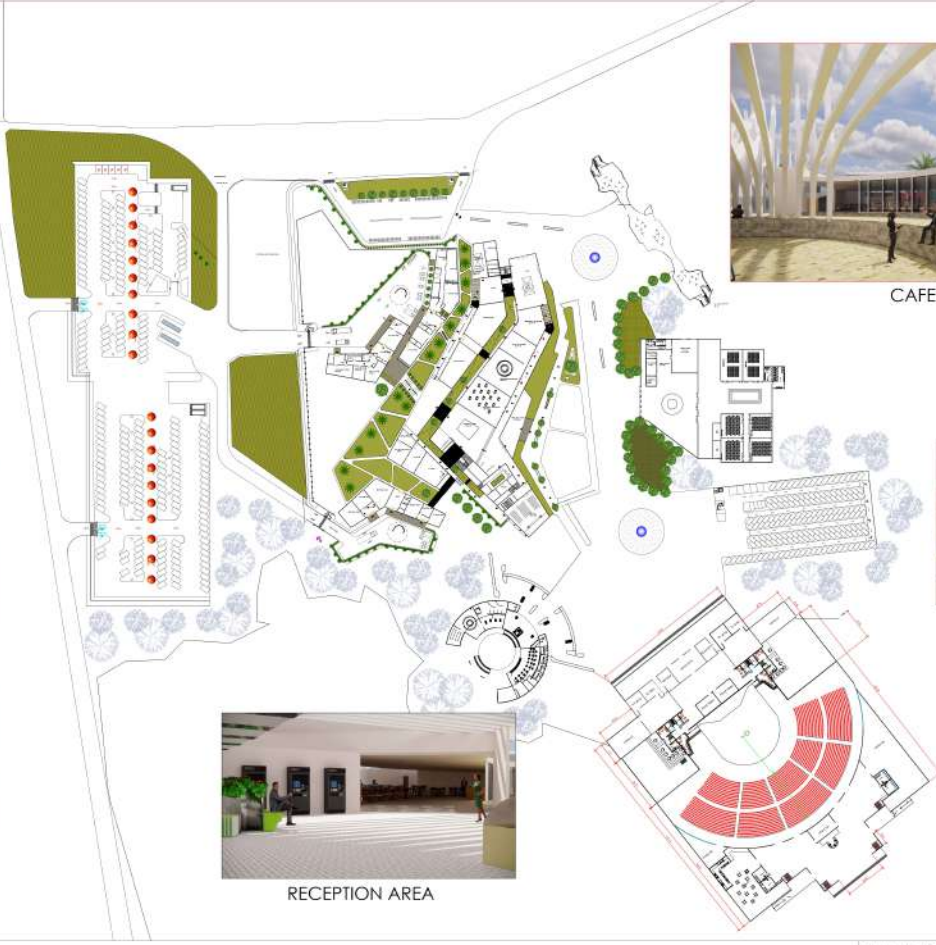
DROP OF POINT



AV ROOM



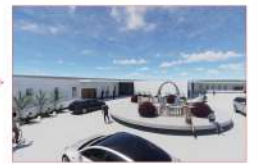
CORRIDOR AREA



CAFE AREA



CONCERT HALL



DROP OFF AREA

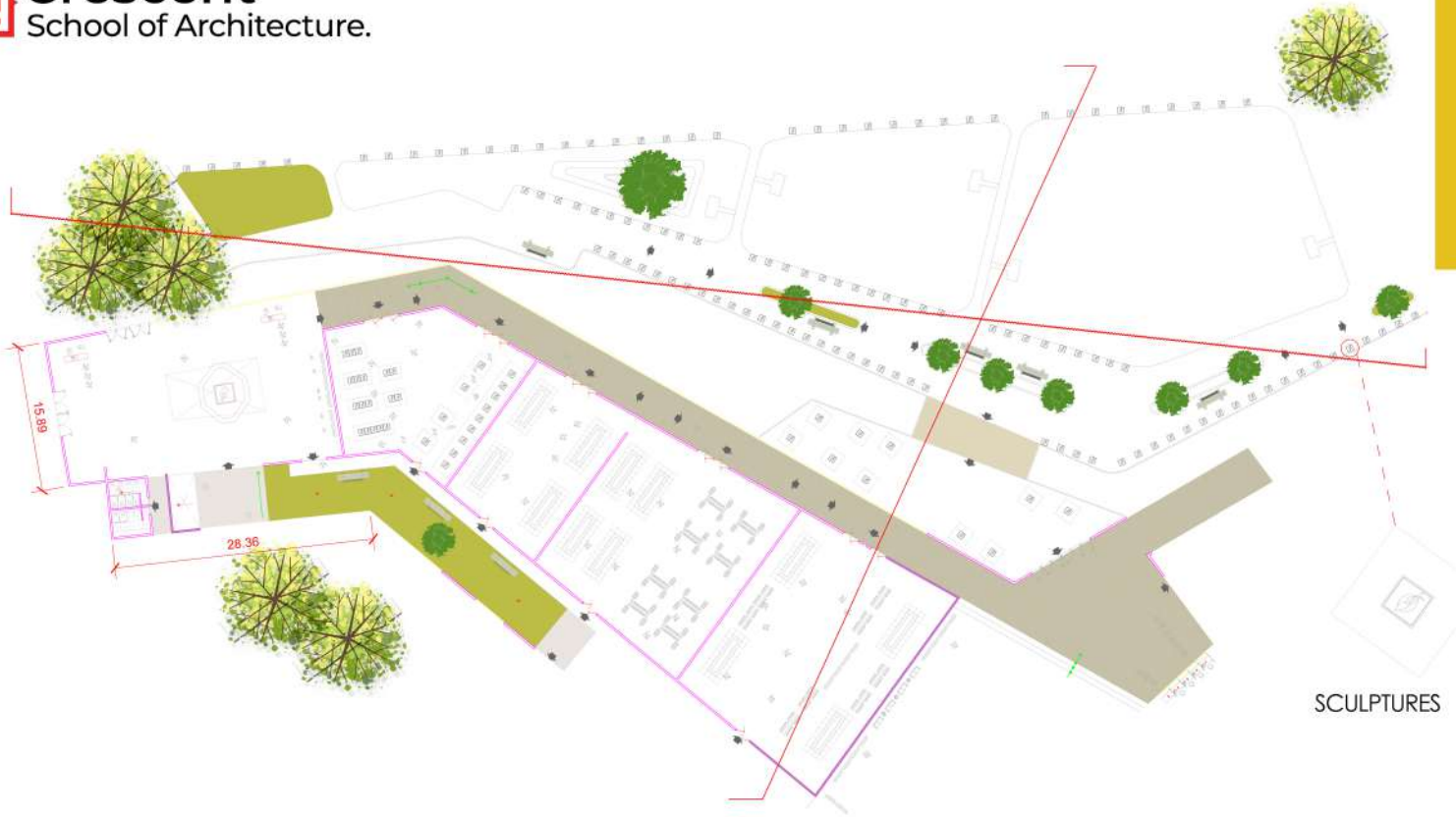


RECEPTION AREA



# INTERPRETATION CENTRE - DOUBLE LINE FLOOR PLAN

NAME: DHINESH RAJA S  
RRN: 230101601012  
YEAR III SEMESTER VI  
ARCHITECTURAL DESIGN STUDIO  
CRESCENT SCHOOL OF ARCHITECTURE



MEMORY PLAZA - FLOOR PLAN



MEMORY PLAZA - SECTION AA'



MEMORY PLAZA - SECTION BB'



EXTERIOR VIEW - 1



EXTERIOR VIEW - 2



EXTERIOR VIEW - 3



EXTERIOR VIEW - 4

# INTERPRETATION CENTRE - CONCEPT

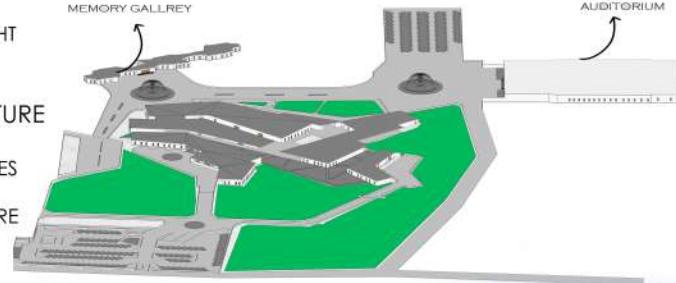
- THE GROUND OF THE ARSENAL WAS OPENED TO HIDE THE DEAD. THE INTERPRETATION CENTRE OPENS THE GROUND AGAIN TO HONOUR THEM.
- THE BUILDING IS NOT A MONUMENT STANDING ON THE EARTH. IT IS LIKE A WOUND CUT INTO THE GROUND.

- THE DESIGN FOLLOWS A BRUTALIST STYLE
- A DIAGONAL PATH CALLED THE SCAR AXIS CUTS ACROSS THE PARKIT CONNECTS THE BARRACKS ENTRANCE TO ALL THE PROGRAM SPACES, WHICH ARE ARRANGED ALONG THIS MAIN PATH. BECAUSE THE SITE IS IN AN EARTHQUAKE ZONE, THE BUILDING FORM REFLECTS THE FRACTURED CONDITION OF THE LAND.

1. **ENTRANCE PORTAL (THRESHOLD SPACE)**  
CIRCULAR OR FRAMED OPENING  
DARK SURROUNDINGS WITH FOCUSED LIGHT  
CREATES MYSTERY AND CURIOSITY

2. **REALITY 1 – ORIGIN (PAST / NATURE ZONE)**  
MATERIALS: STONE, EARTH, ROUGH TEXTURES  
LOW LIGHT, EARTHY COLORS  
EXHIBITS ABOUT HISTORY / ORIGIN / CULTURE

3. **REALITY 2 – CULTURAL LAYER**  
BRIGHT COLORS, PATTERNS, INTERACTIVE WALLS  
DISPLAY OF TRADITIONS, ART, LIFESTYLE  
SEMI-OPEN AND LIVELY SPACE

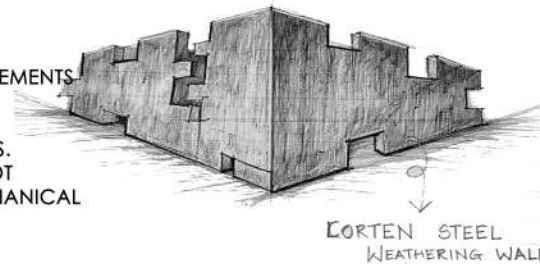


## MATERIAL USED

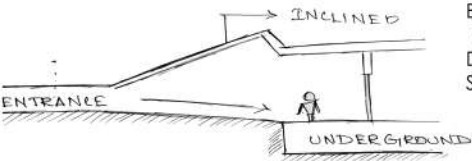
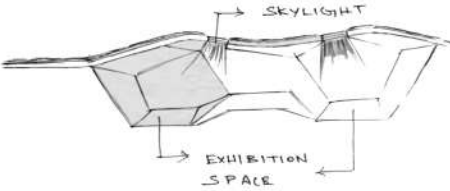
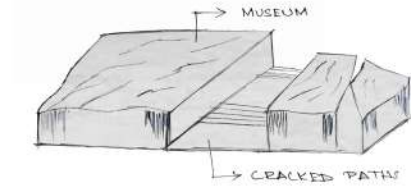
CORTEN STEEL - WEATHERING WALL  
DUE TO THE BRUTALISTIC APPROACH A CORTEN STEEL WALL IS A STRUCTURAL OR CLADDING WALL MADE FROM CORTEN STEEL. WHEN IT IS EXPOSED TO AIR AND MOISTURE, IT NATURALLY FORMS A RUST-LIKE PROTECTIVE LAYER OF IRON OXIDE.



THE FORENSIC GROUND PLANE:  
THE FLOOR OF THE INTERPRETATION CENTER ALONG THE SCAR AXIS IS DESIGNED TO RECORD THE CIRCULATION PATH BELOW THE LAST KNOWN MOVEMENTS OF THE VICTIMS  
LIVING RAMMED EARTH WALLS:  
RAMMED EARTH WALLS PROVIDE STRONG THERMAL MASS. THEY HELP KEEP THE BUILDING COOL NATURALLY DURING HOT SUMMERS DEARINA REDUCING THE NEED FOR MECHANICAL COOLING.



CORTEN STEEL WEATHERING WALL



## SITE ANALYSIS

**LOCATION**  
PROVINCE: TUCUMÁN, ARGENTINA  
SITE: FORMER ARSENAL MIGUEL DE AZCUÉNAGA  
EDGE CONDITION: TRANSITION BETWEEN URBAN EXPANSION + SEMI-RURAL LANDSCAPE  
**URBAN CONTEXT**  
- CURRENTLY ISOLATED + ABANDONED  
- MILITARY LAND  
- SURROUNDED BY:  
LOW-DENSITY RESIDENTIAL GROWTH  
AGRICULTURAL/GREEN PATCHES  
EMERGING URBAN INFRASTRUCTURE

### TOPOGRAPHY + HYDROLOGY

**TERRAIN**  
MOSTLY FLAT TO GENTLY UNDULATING AND CONTOUR SLIGHT DEPRESSIONS USEFUL FOR:  
- WATER COLLECTION  
- MEMORIAL VOIDS

### WATER STRATEGY

DESIGN IMPLICATIONS:  
BIOSWALES  
RETENTION PONDS  
WETLAND LANDSCAPES

MUST ACT AS:  
FLOOD MITIGATION SYSTEM  
ECOLOGICAL RESERVE

**CLIMATE TYPE:**  
HUMID SUBTROPICAL

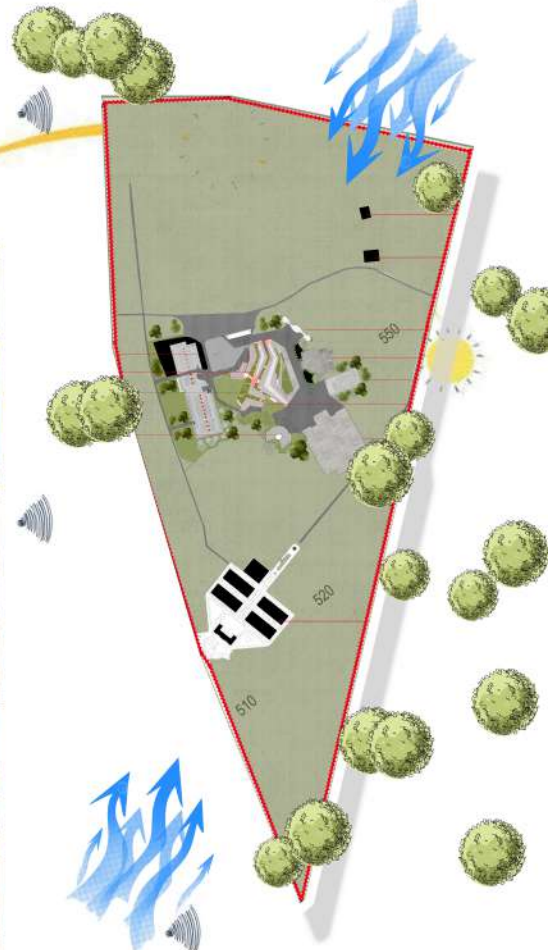
**TEMPERATURE :**  
SUMMER: 30-40°C (HOT, HUMID)  
WINTER: 10-20°C (MILD)  
{DESIGN RESPONSE SHADE IS CRITICAL & AVOID EXPOSED HARDSCAPE IN PUBLIC AREAS}

**WIND:**  
MODERATE AIRFLOW  
OPEN SITE - GOOD VENTILATION POTENTIAL  
SOUTHWEST - NORTHEAST

**RAINFALL :**  
HIGH RAINFALL (ESPECIALLY SUMMER) RISK OF SURFACE RUNOFF & FLOODING

## LEGENDS:

- SUN PATHS
- VEGETATION
- WIND PATH
- NOISE



## SWOT ANALYSIS

**STRENGTHS**  
LARGE SITE  
STRONG HISTORICAL NARRATIVE  
FLEXIBLE LAND USE

### WEAKNESSES

LARGE SITE  
STRONG HISTORICAL NARRATIVE  
FLEXIBLE LAND USE

### OPPORTUNITIES

URBAN INTEGRATION  
ECOLOGICAL RESTORATION  
CULTURAL LANDMARK CREATION

### THREATS

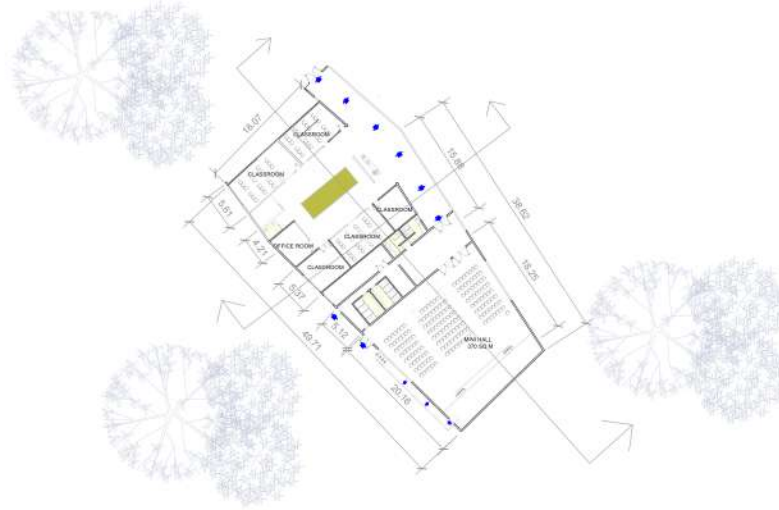
MISREPRESENTATION OF HISTORY  
OVER-DESIGNING SENSITIVE AREAS  
IGNORING MASS GRAVE ZONES



SITE SURROUNDING  
EXISTING BUILDING  
PATH WAYS



KEY PLAN - CLASS ROOM COMPLEX



CLASS ROOM & MINI HALL- FLOOR PLAN



SECTION AA'



SECTION BB'



RECEPTION VIEW - 1



CLASSROOM VIEW - 2



CLASSROOM VIEW - 3



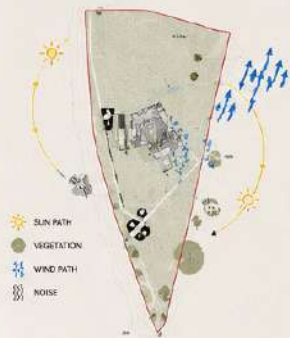
EXTERIOR VIEW - 4







SITE ANALYSIS



# THE RIFT

INTERPRETATION CENTRE

CONCEPT

THE GROUND OF THE ARSENAL WAS OPENED TO HIDE THE DEAD. THE INTERPRETATION CENTRE OPENS THE GROUND AGAIN TO HONOUR THEM. IT IS LIKE A WOUND CUT INTO THE GROUND.

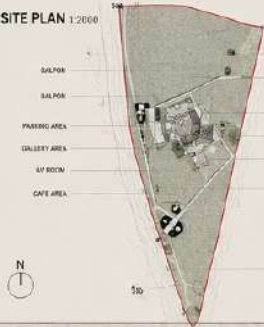
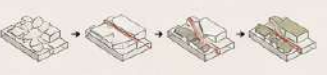
THE BUILDING IS NOT A MONUMENT STANDING ON THE EARTH. IT IS LIKE A WOUND CUT INTO THE GROUND.

THE DESIGN FOLLOWS A BRUTALIST STYLE. A DIAGONAL PATH CALLED THE SCAR AXIS CUTS ACROSS THE PARKING AND CONNECTS THE BARRACKS TO ALL THE PROGRAM SPACES, WHICH ARE ARRANGED ALONG THIS MAIN PATH. BECAUSE THE SITE IS IN AN EARTHQUAKE ZONE, THE BUILDING FORM REFLECTS THE FRACTURED CONDITION OF THE LAND.

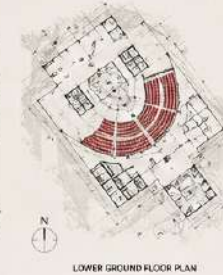
MATERIALS



DESIGN CONCEPT



FLOOR PLANS



SECTION



AXONOMETRIC EXPLODED VIEW

