

**Concept**

Inspired by coral reefs, the pavilion reflects organic growth through fluid, continuous forms.

The design emphasizes porosity, allowing light and air to pass through perforations, creating dynamic light and shadow.

The result is an immersive space that



**sketches**

**Structural System**

Freeform shell structure that acts as a continuous load-bearing surface

Supported by an internal system of steel ribs / frame to stabilize the complex geometry

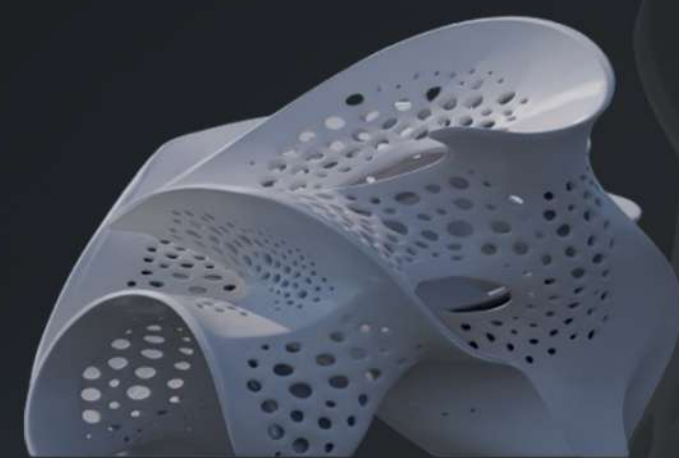
Perforations are strategically distributed to balance light, ventilation, and structural integrity

**Materials**

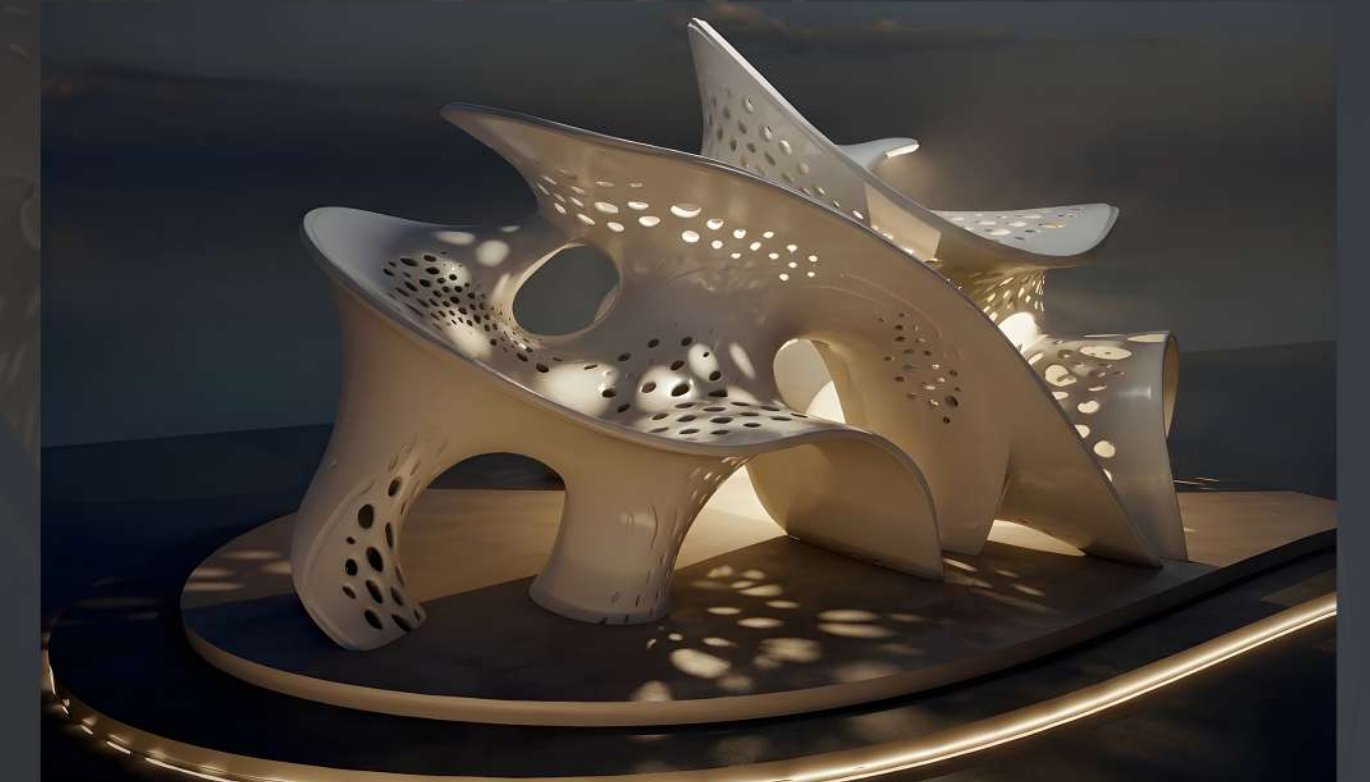
FRC / Reinforced Concrete for the main structural shell  
 GFRP / Composite panels for the outer skin  
 Smooth, light-colored finish to enhance light reflection  
 Integrated LED

**The physical**

model was 3D printed using PLA / Resin to capture the complex organic geometry and fine perforations of the



**3d shots**



**maquette shots**

