

## BYTEWORKS HUB

Smart. Sustainable. Human-Centric.

**Status:** Academic Project

**Year:** 2023

**Typology:** Corporate Office Building

**Location:** Adyar, Chennai, India

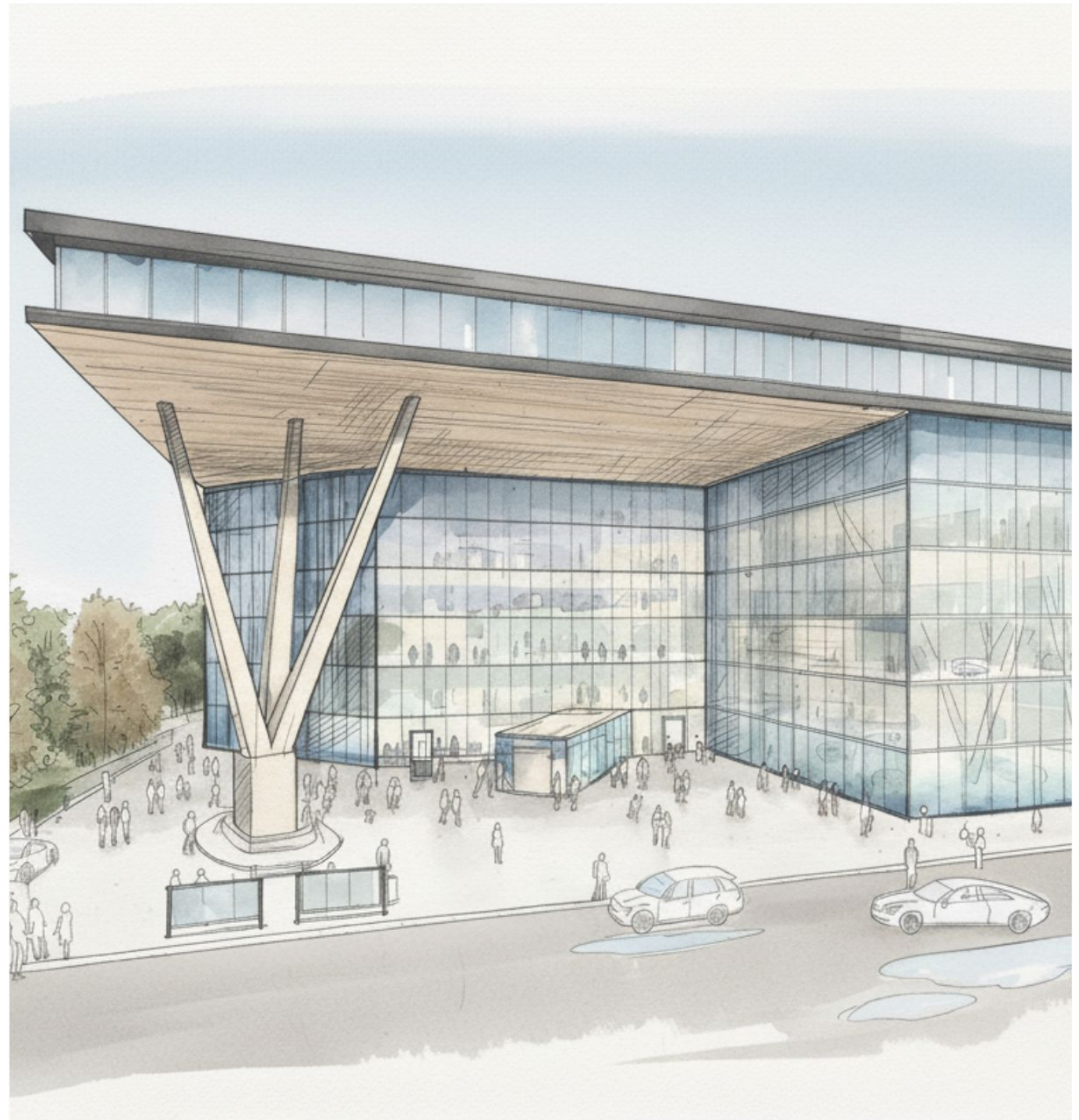
**Site Area:** 22 Acres

**Software Used:** AutoCAD, Lumion, SketchUp, Photoshop

### VISION

Byteworks Hub envisions a workplace where architecture and nature function as one seamless ecosystem. The design prioritizes physical comfort, mental well-being, and operational efficiency by integrating lush green terraces, transparent façades and socially engaging open spaces. The sculptural tree column structure enhances vertical flow while maximizing natural light and visual connectivity to the Adyar River.

Indoor and outdoor environments merge to create an inviting workspace that supports collaboration, relaxation, and creativity. Smart building automation manages lighting, ventilation, and thermal comfort with reduced energy demand. Rainwater harvesting, passive cooling, and sustainable materials help maintain a low-impact footprint. Byteworks Hub embodies a new generation of offices highly functional, environmentally responsible, and centered on the human experience.



## CONCEPT — Architecture That Evolves Into a Workplace Ecosystem

The design begins as a simple programmatic mass and gradually transforms into an open, expressive, and human-centric workplace. Subtractions and spatial openings introduce natural light and social interaction, while the cantilevered roof creates a protected arrival experience and a bold architectural identity.

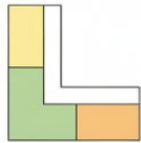
The sculptural structural column supports the form both physically and visually, becoming the core element that shapes movement and gathering. In its final stage, transparency, terraces, and visual openness merge indoor and outdoor environments, creating a workplace ecosystem centred on comfort, collaboration, and everyday well-being.

### Spatial Narrative — From Gathering to Well-Being



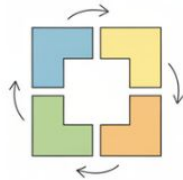
**1. Program Block**

A space is defined, a starting point for people to gather.



**2. L-Shaped Formation**

The space opens up, creating direction and the first sense of interaction.



**3. Spatial Interaction**

Multiple spaces turn toward one another, encouraging movement, flow, and connection between people.



**4. Transparent Workplace**

Openness and visibility strengthen harmony, comfort, and communication.



**5. Ecosystem of Work & Well-Being**

Nature, community, and shared experiences shape a workplace centred on balance, belonging, and well-being.

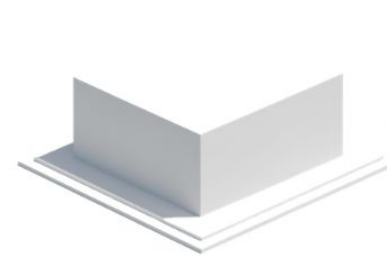
## SITE PLAN



### LEGENDS

1. MAIN ENTRY/EXIT
2. SECURITY CABIN
3. VISITOR'S PARKING
4. EMPLOYER'S PARKING
5. HELPDESK
6. OFFICE BLOCK
7. COURTYARD
8. ECO PARK
9. SERVICE YARD
10. OSR
11. SERVICE ENTRY/EXIT

## Form Evolution — Towards a Human-Centric Workplace



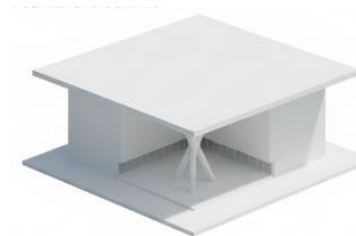
**1. Program Block**

A simple rectangular mass generated from the required built program, forming the base volume of the building.



**2. Cantilever Roof & Front Subtraction**

The roof extends outward as a cantilever while a front void is subtracted from the block to create openness and a semi-covered arrival space.



**3. Structural Column & Ground Opening**

A sculptural tree-shaped column is introduced to structurally support the cantilevered roof, and the ground layer is opened to form a wider public spill-out zone.



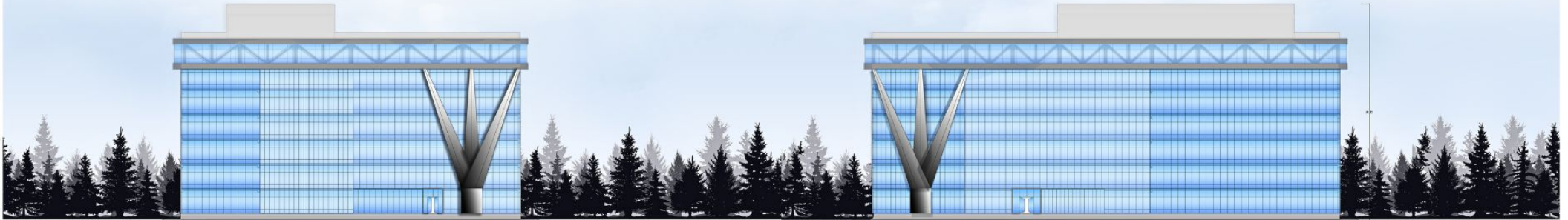
**4. Final Workplace Ecosystem**

Glass facades and layered interior terraces complete the form, integrating transparency, natural light, and collaboration-focused workspaces.





A continuous glass façade system ensures balanced daylight and optimized thermal performance across the building. The central structural column stabilizes the cantilevered roof and defines the primary public entrance.



NORTH SIDE ELEVATION

WEST SIDE ELEVATION



SECTION - BB'

SECTION - AA'

The sectional cuts demonstrate clear spatial zoning, efficient vertical circulation, and flexible floor plates suited for diverse office functions.