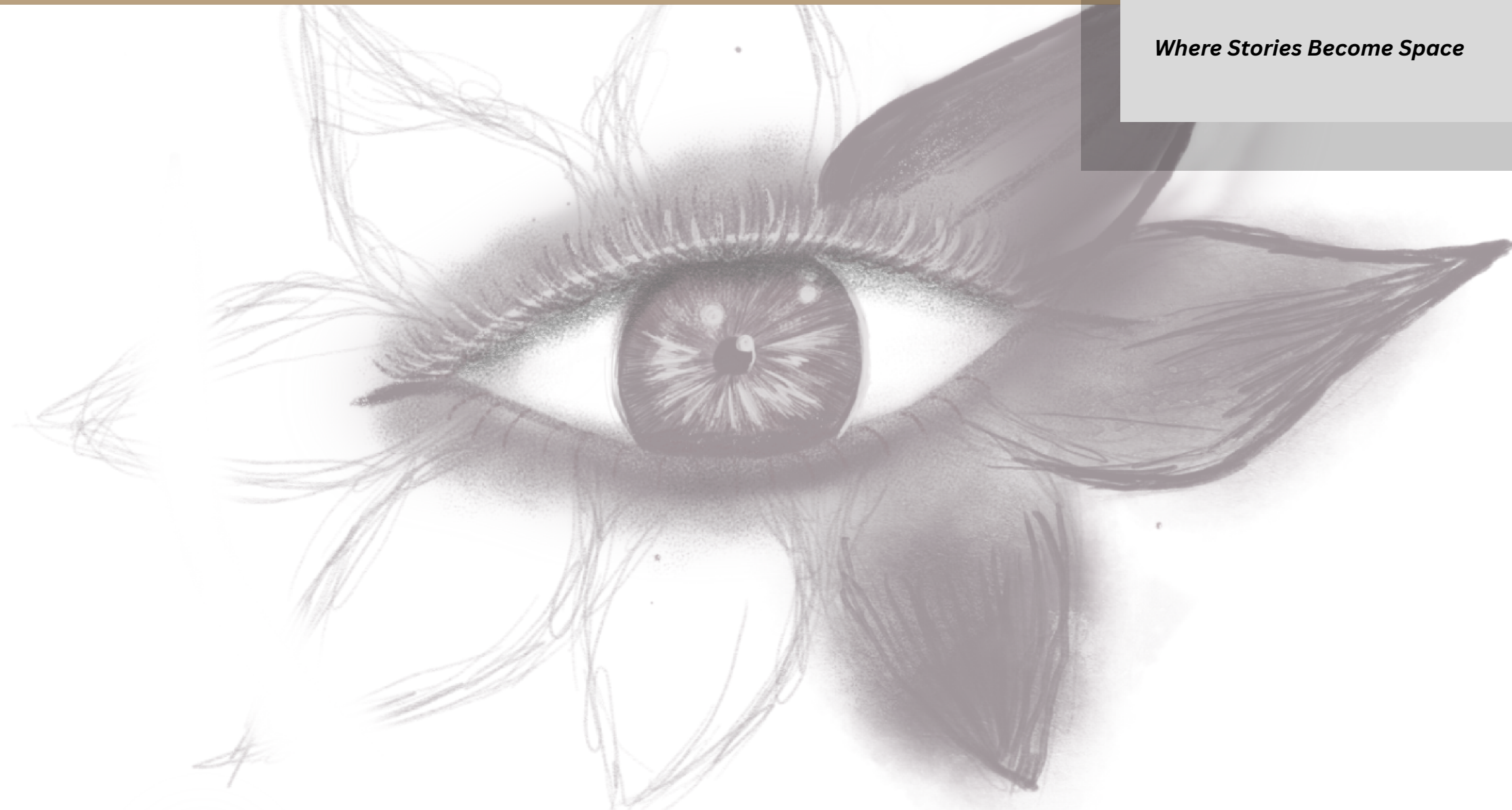


ROSE OJANG'OR

ARCHITECTURE PORTFOLIO

Jkuat - Year III

Where Stories Become Space



CONTENTS

01 **SHADOWS OF UHURU**
Museum of Kenyan Independence

02 **CONCEPT DEVELOPMENT**
Design Process & Iterations

03 **PHYSICAL MODELS**
Study Models & Final Model

04 **PLANS**
Site Plan & Ground Floor Plan

05 **ELEVATIONS & SECTIONS**
Architectural Drawings

06 **MEMORIAL PLAZA DETAILING**
The Symbolic Heart

07 **RENDERS**
3D Visualisations

PROJECT 01 SHADOWS OF UHURU

MUSEUM OF KENYAN INDEPENDENCE

A museum exploring Kenya's journey from colonial occupation to independence. The design uses **fragmentation, collision** and **reunification** to translate historical memory into spatial experience.

Academic Project

Year: 2026

Type: Museum Design

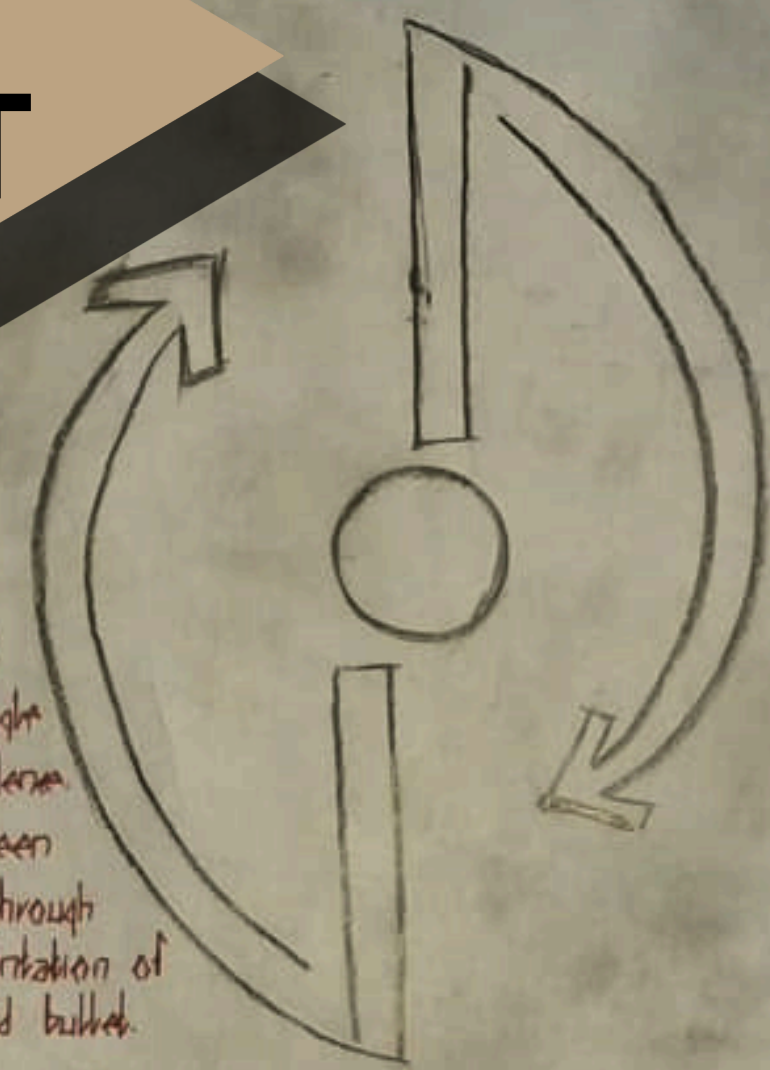
Site: Jkuat Industrial Park, Juja, Kenya.



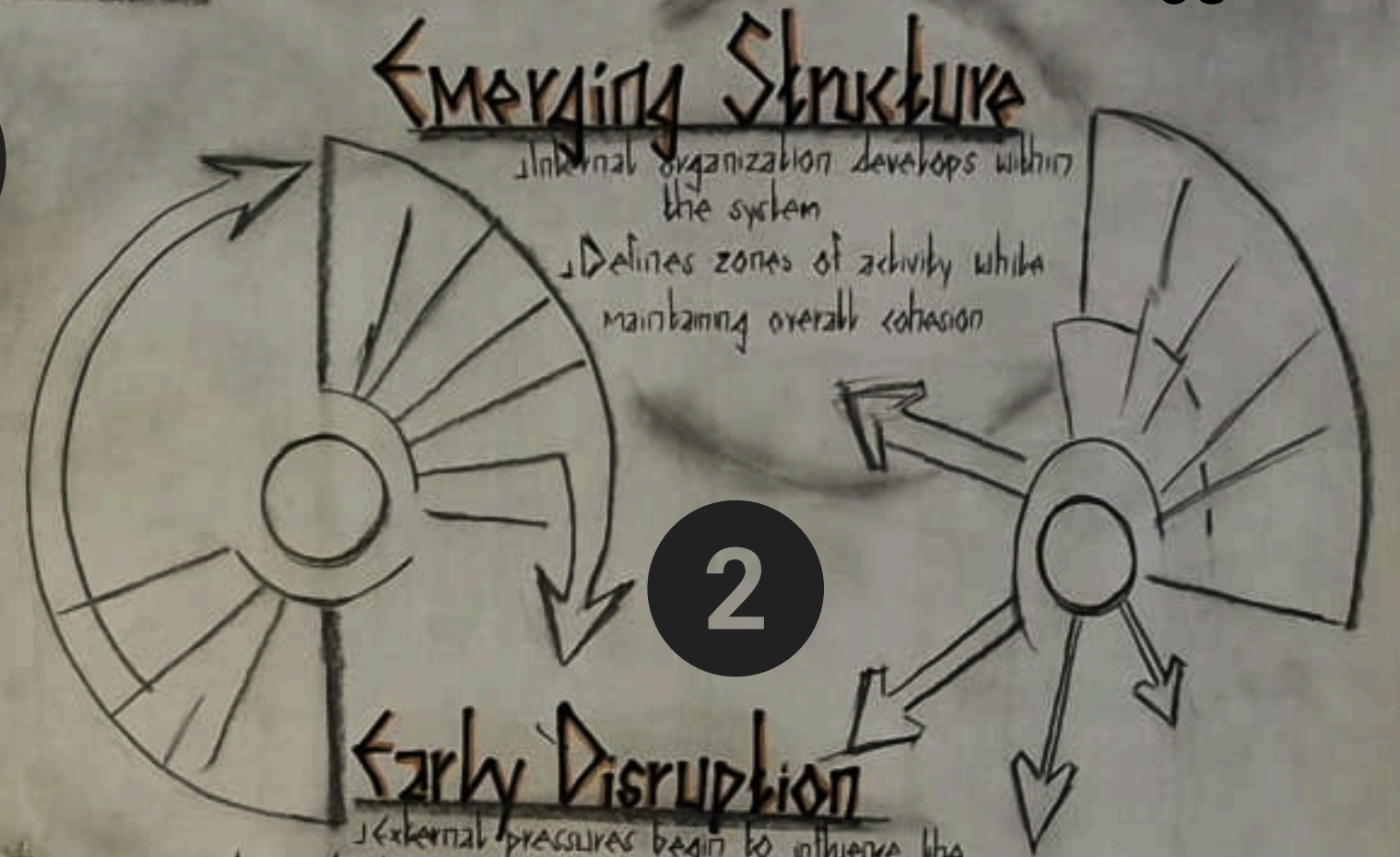
CONCEPT DEVELOPMENT

13th APRIL 2025
ROSA MARTA '07
ABS219-000812023

CONCEPT STATEMENT
Shadows Of Uhuru
- Explores the painful legacy of colonial intrusion in Kenya and the enduring struggle for liberation during the fight for independence.
- The concept draws from the tension between traditional resistance and colonial warfare through the symbolic confrontation of the spear and bullet.



1



2

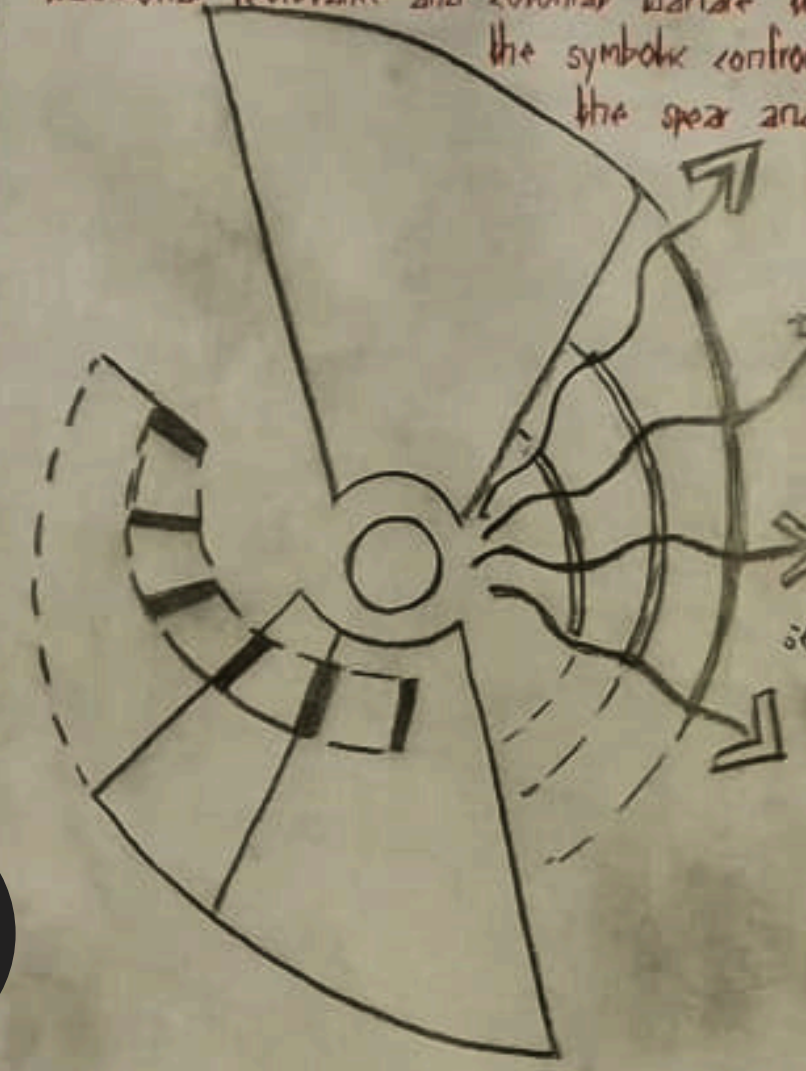
Emerging Structure

Internal organization develops within the system
Defines zones of activity while maintaining overall cohesion

Early Disruption

External pressures begin to influence the system, introducing directional movement and the first signs of instability

3



6

Independence

Spatial Release: the fragmented system transitions into open, liberated movement
Control dissolves, allowing for self-determined paths and reconnection to space and identity

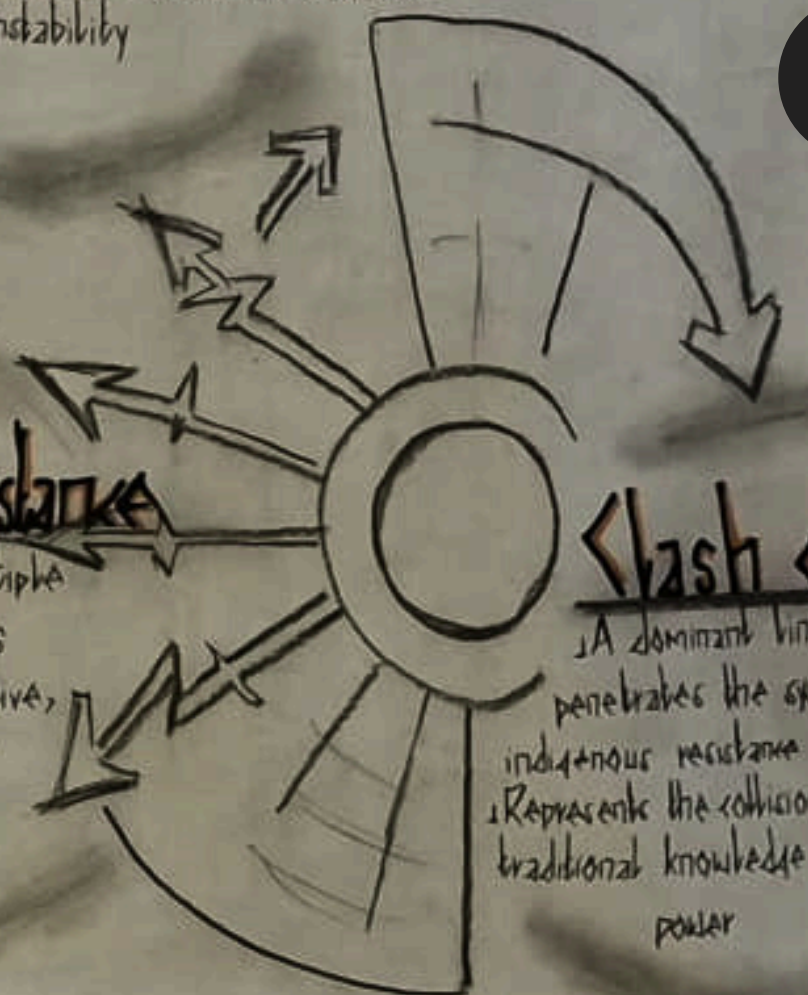


4

Fragmented Resistance

The system breaks into multiple independent paths
Movement becomes adaptive, decentralized, unpredictable
Reflects the spread of guerilla tactics

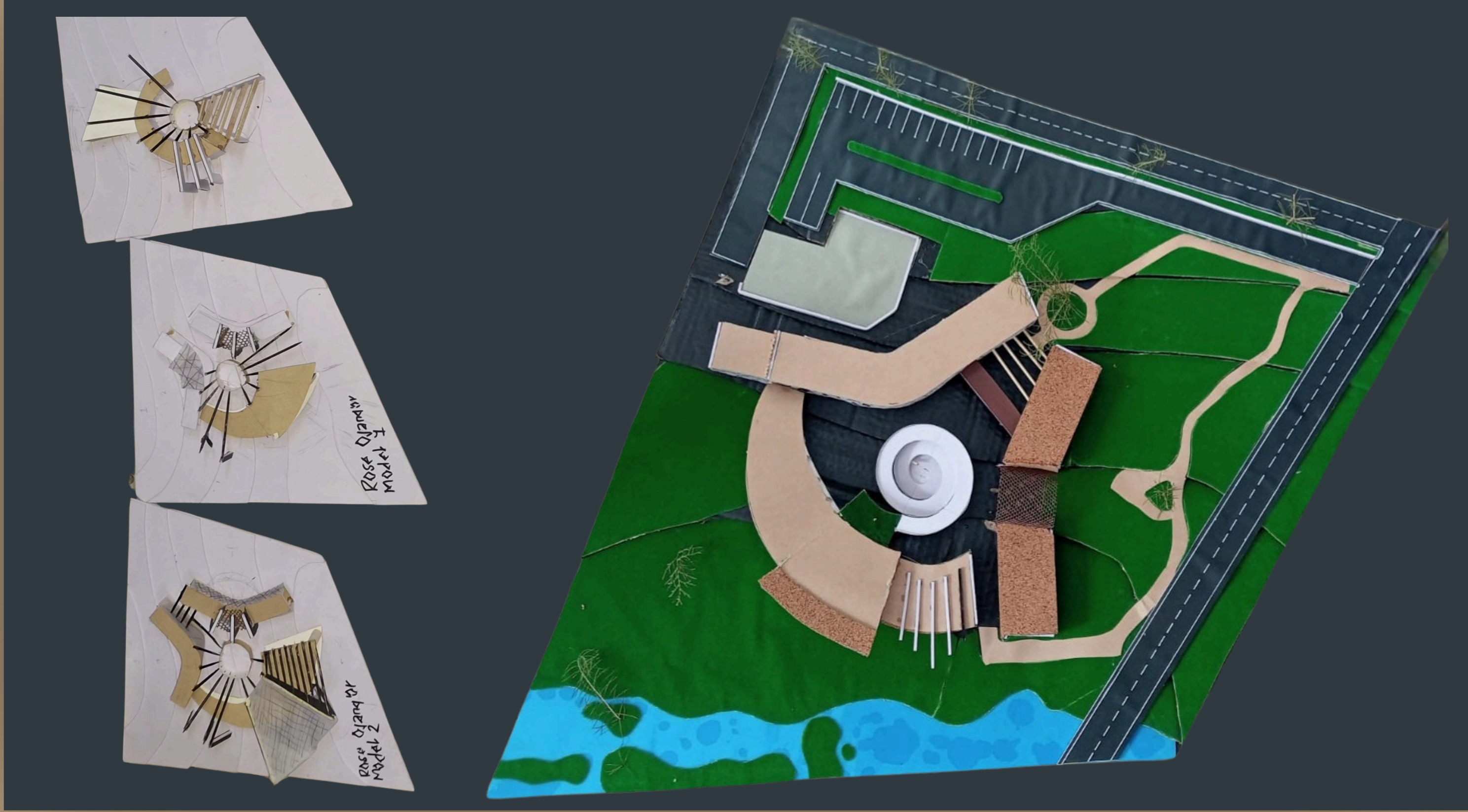
5

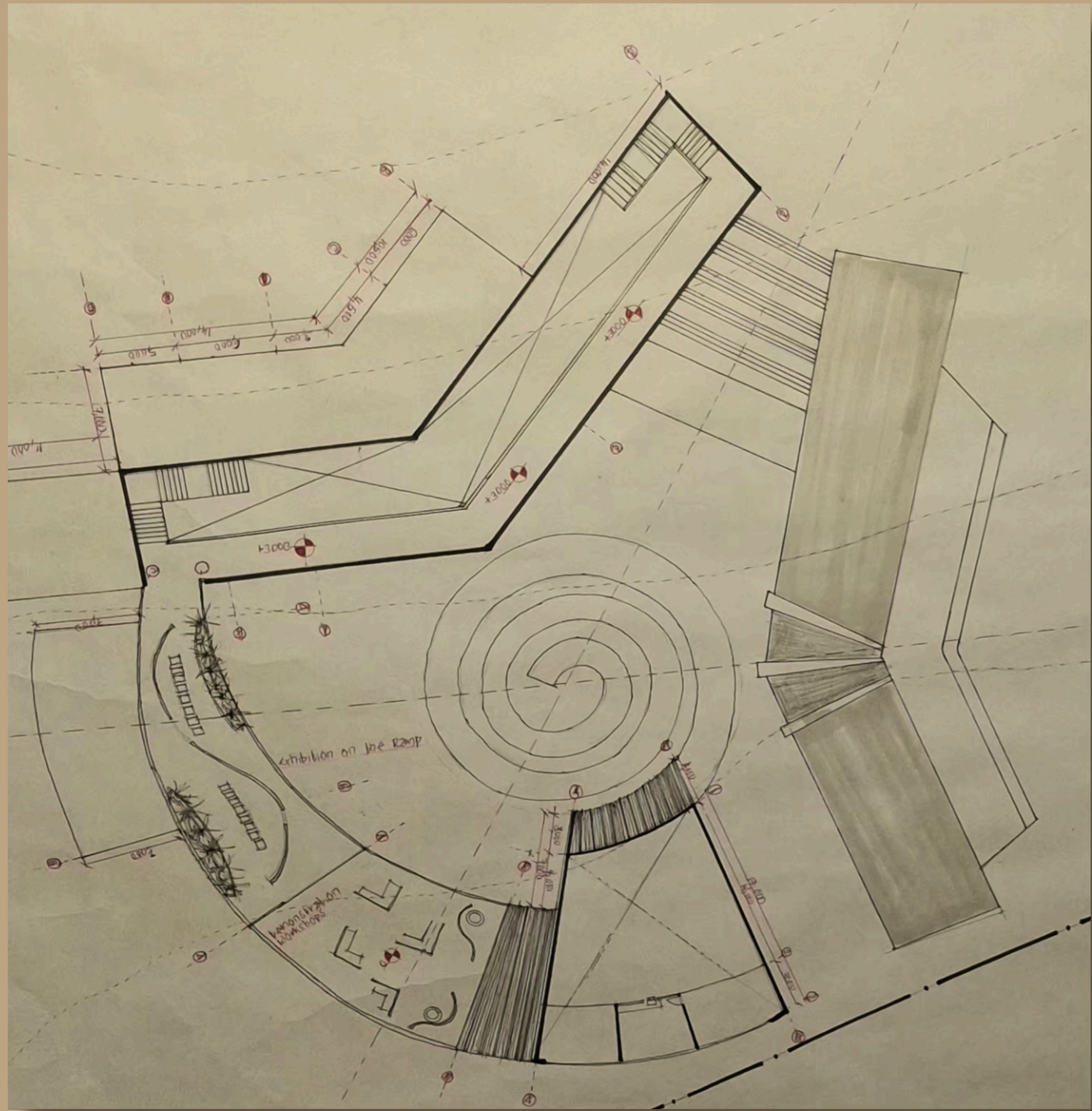


Clash of Forces

A dominant linear force penetrates the system confronting indigenous resistance
Represents the collision between traditional knowledge and industrial power

PHYSICAL MODELS



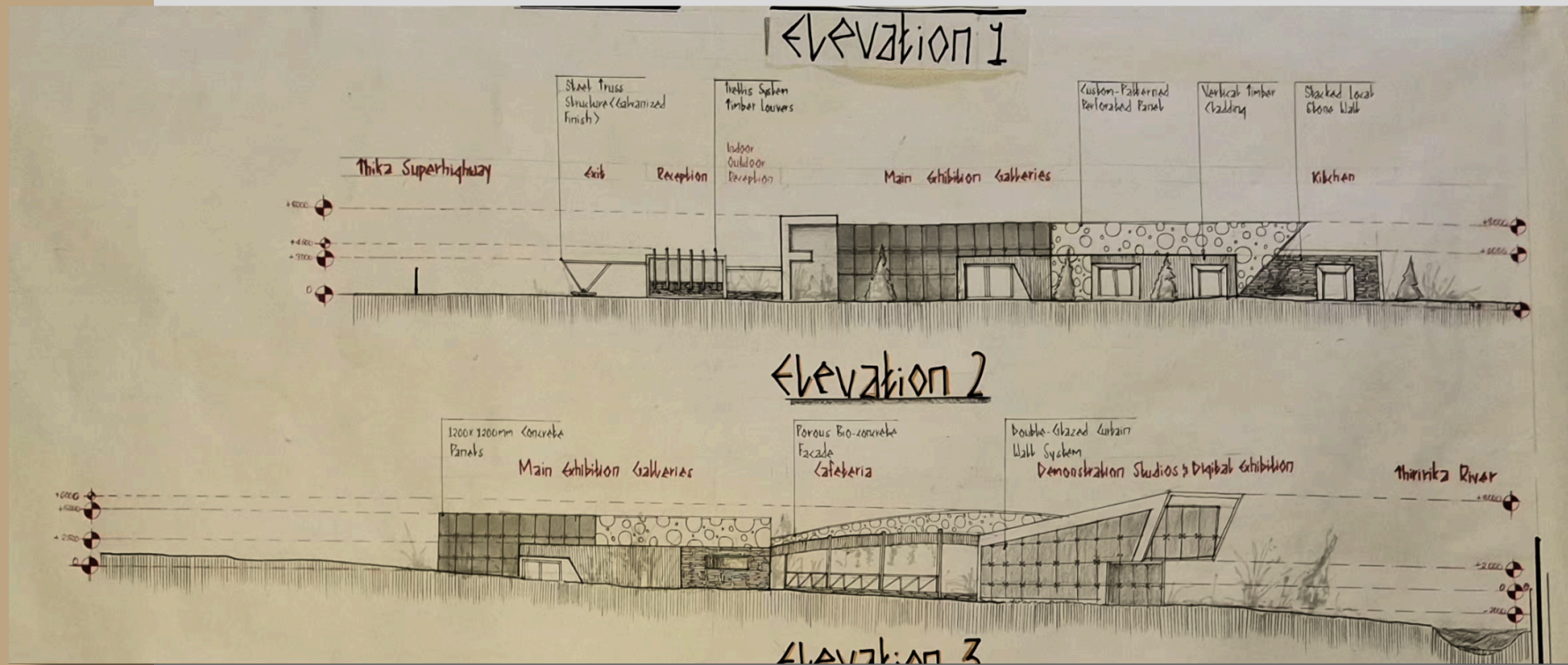


FIRST FLOOR PLAN

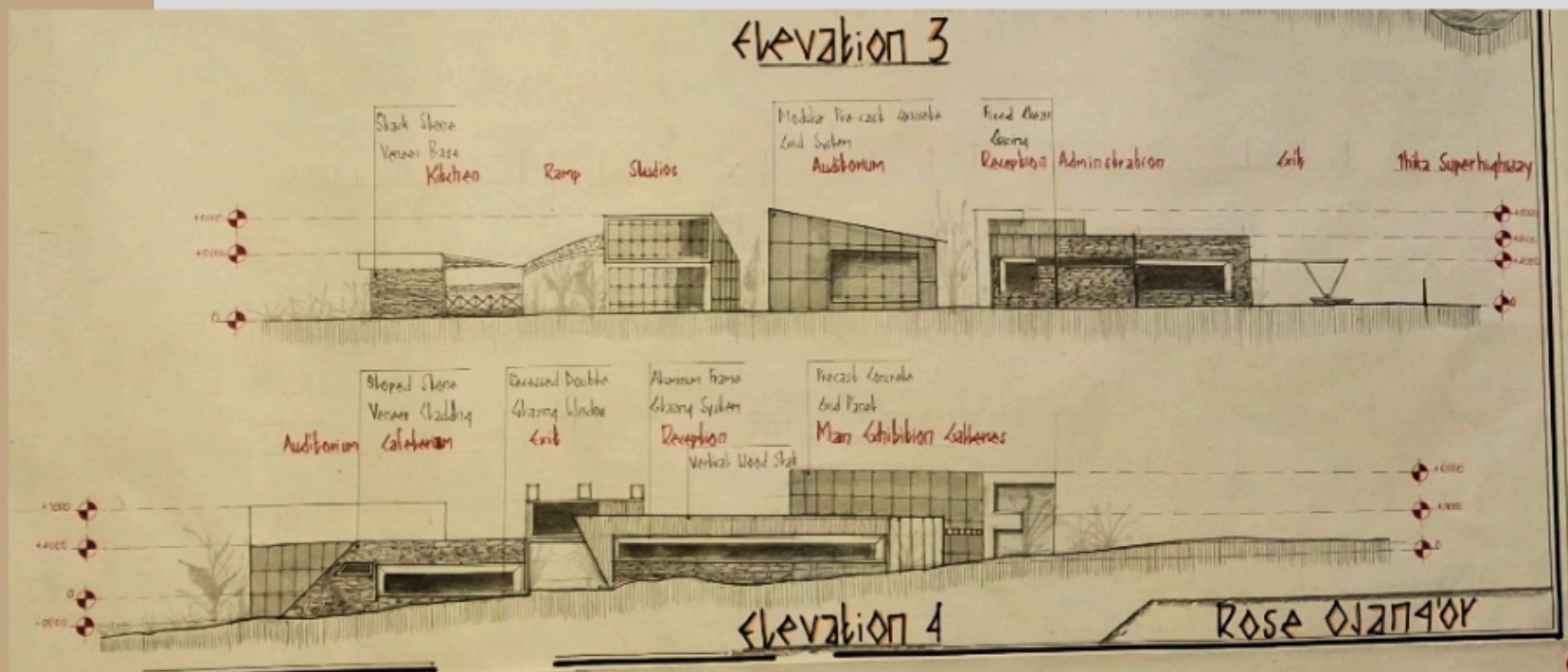


OUTLINE PROPOSAL

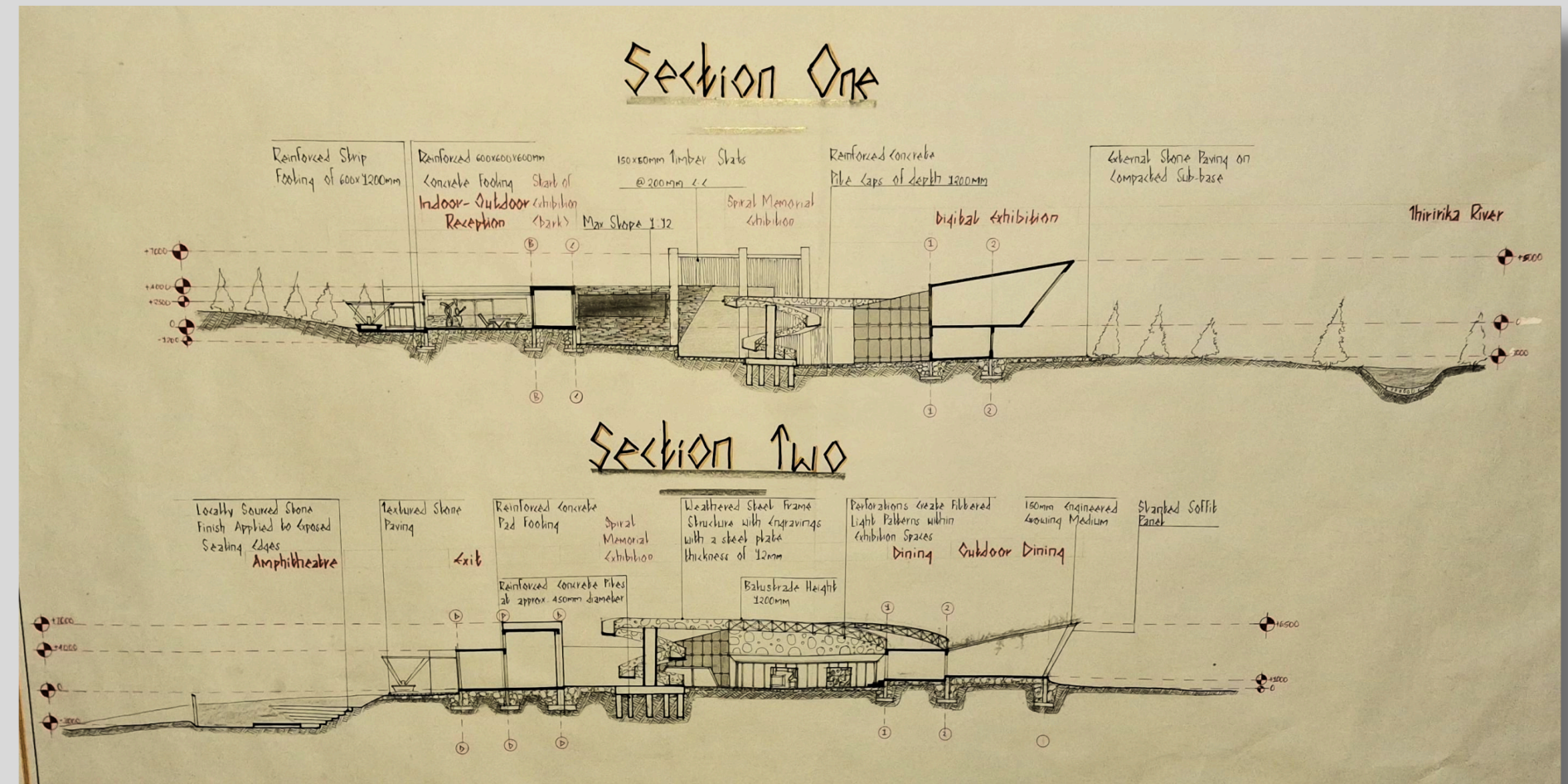
Elevation 1&2



Elevation 3&4



ELEVATIONS AND SECTIONS Sections

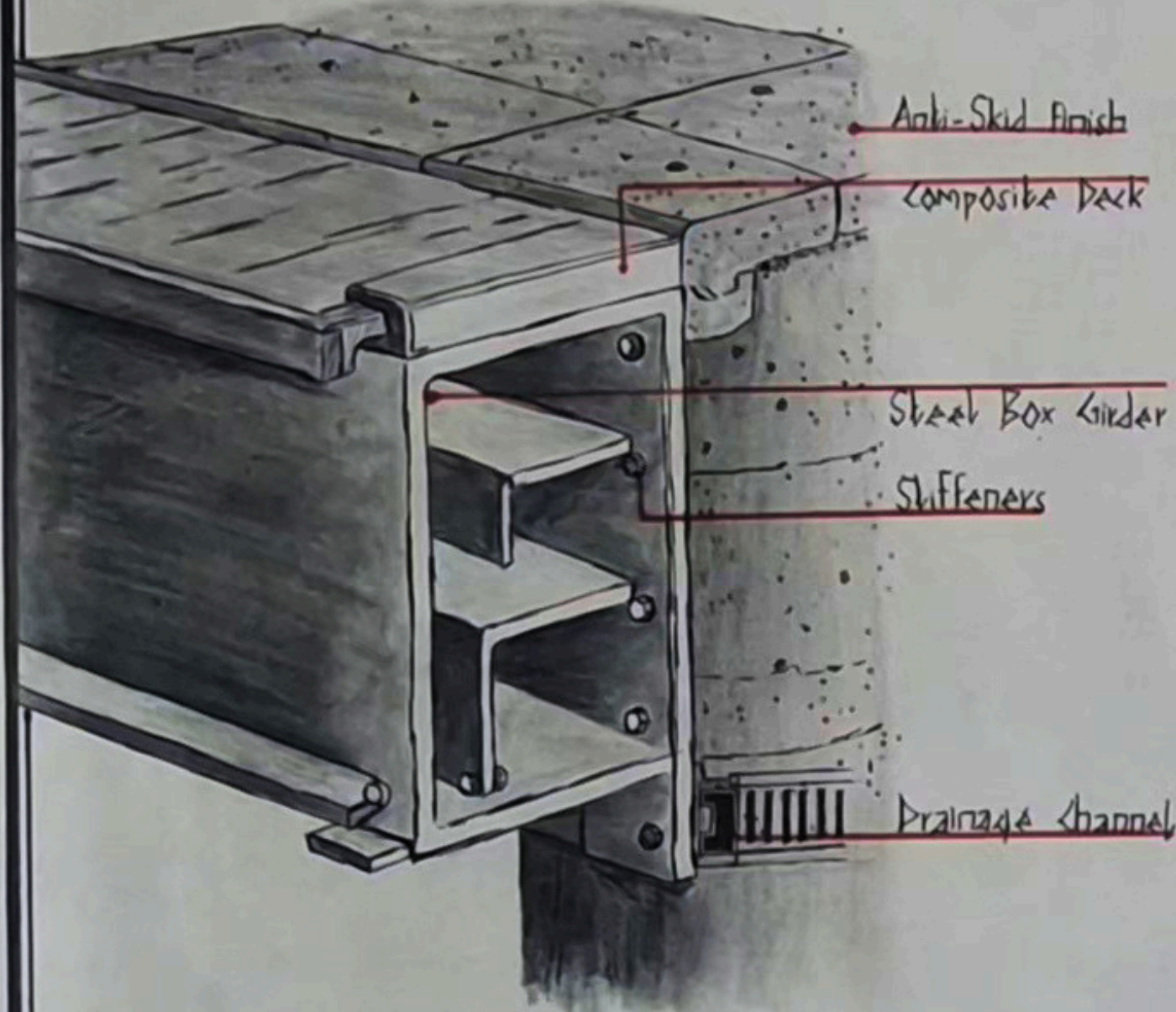




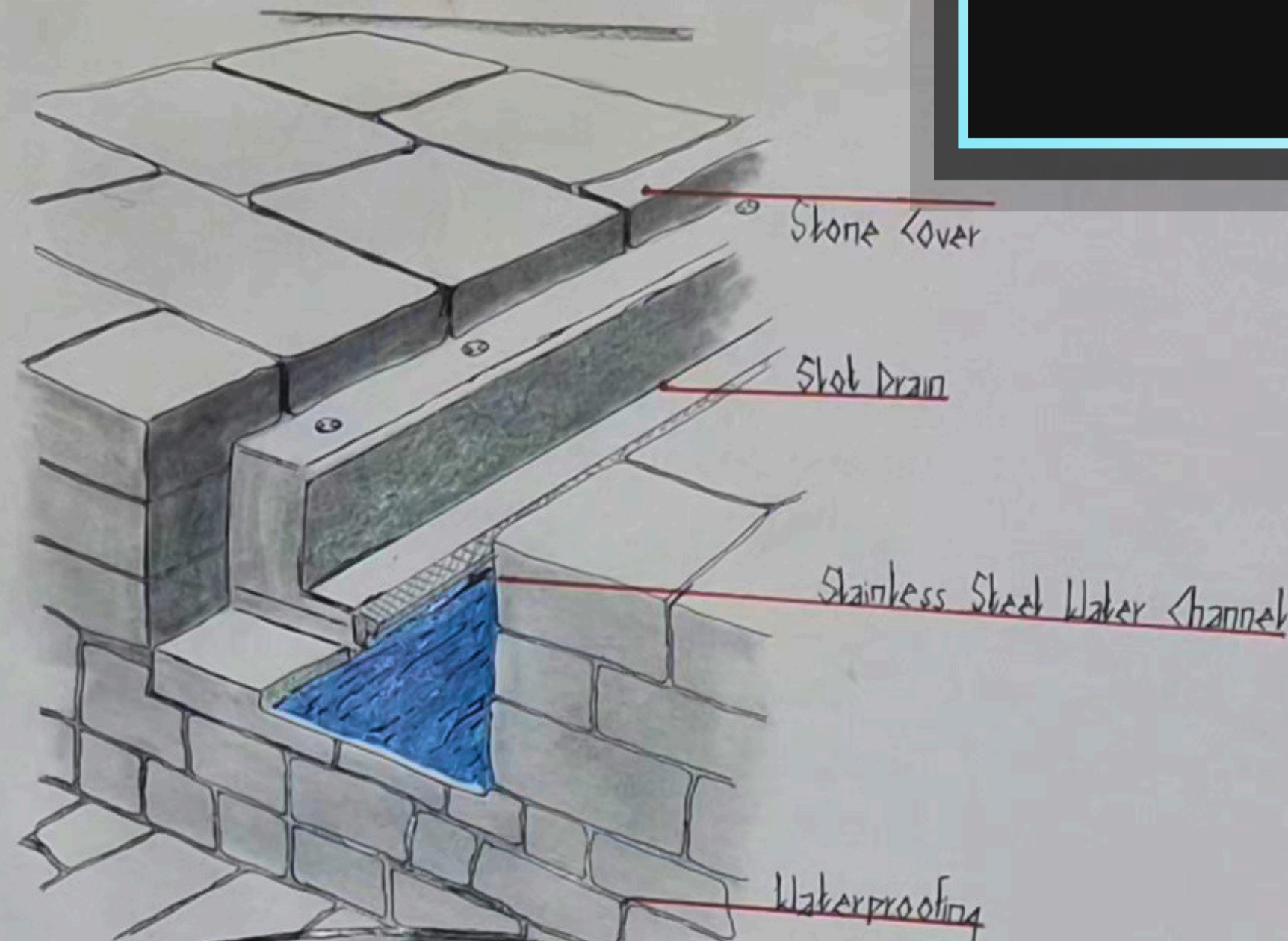
MEMORIAL PLAZA

The memorial spine serves as the symbolic heart of the museum. A spiraling path guides visitors through memory, resistance, sacrifice and reflection while descending toward a point of contemplation.

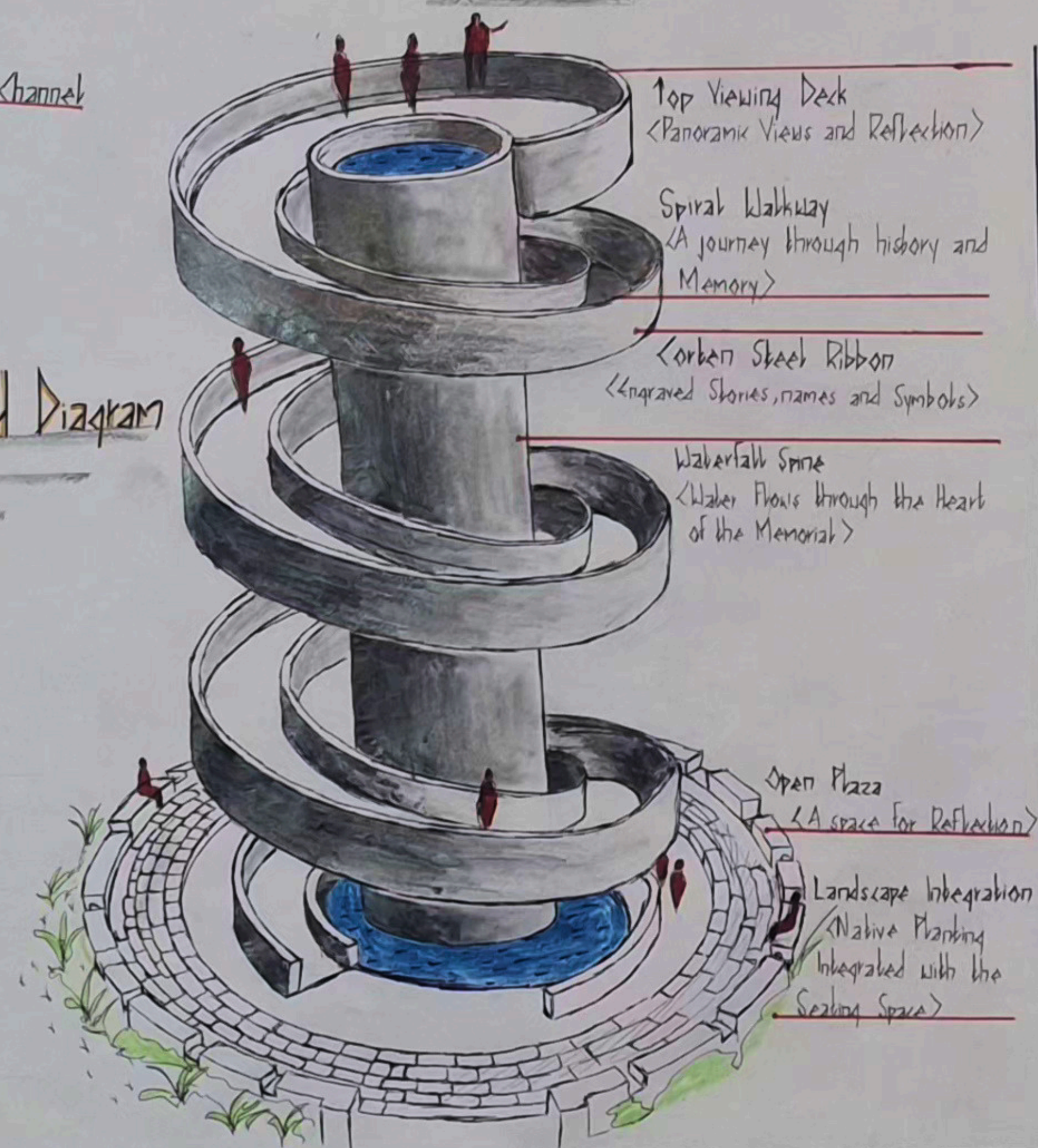
Ramp Section



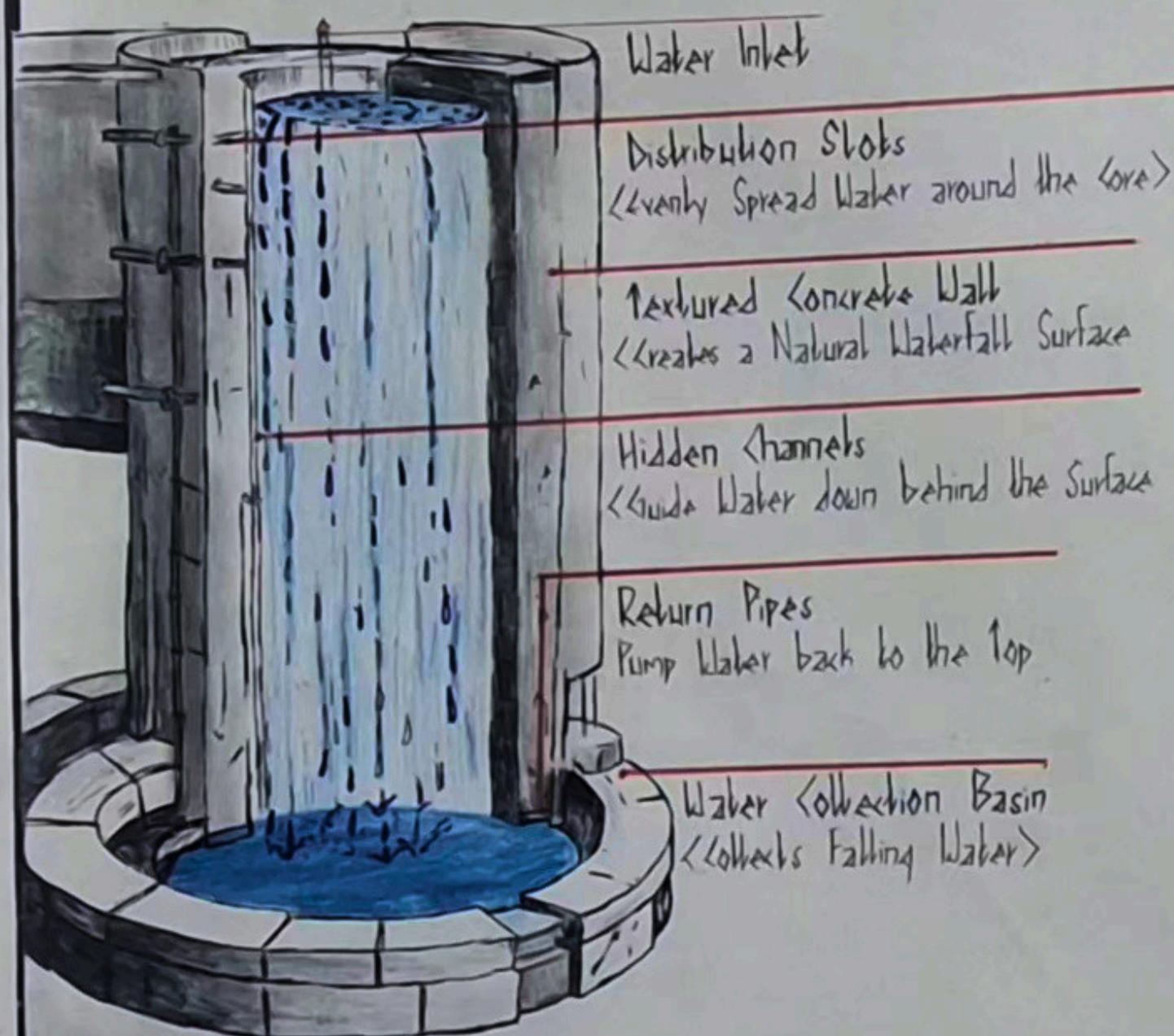
Water Channel Detail



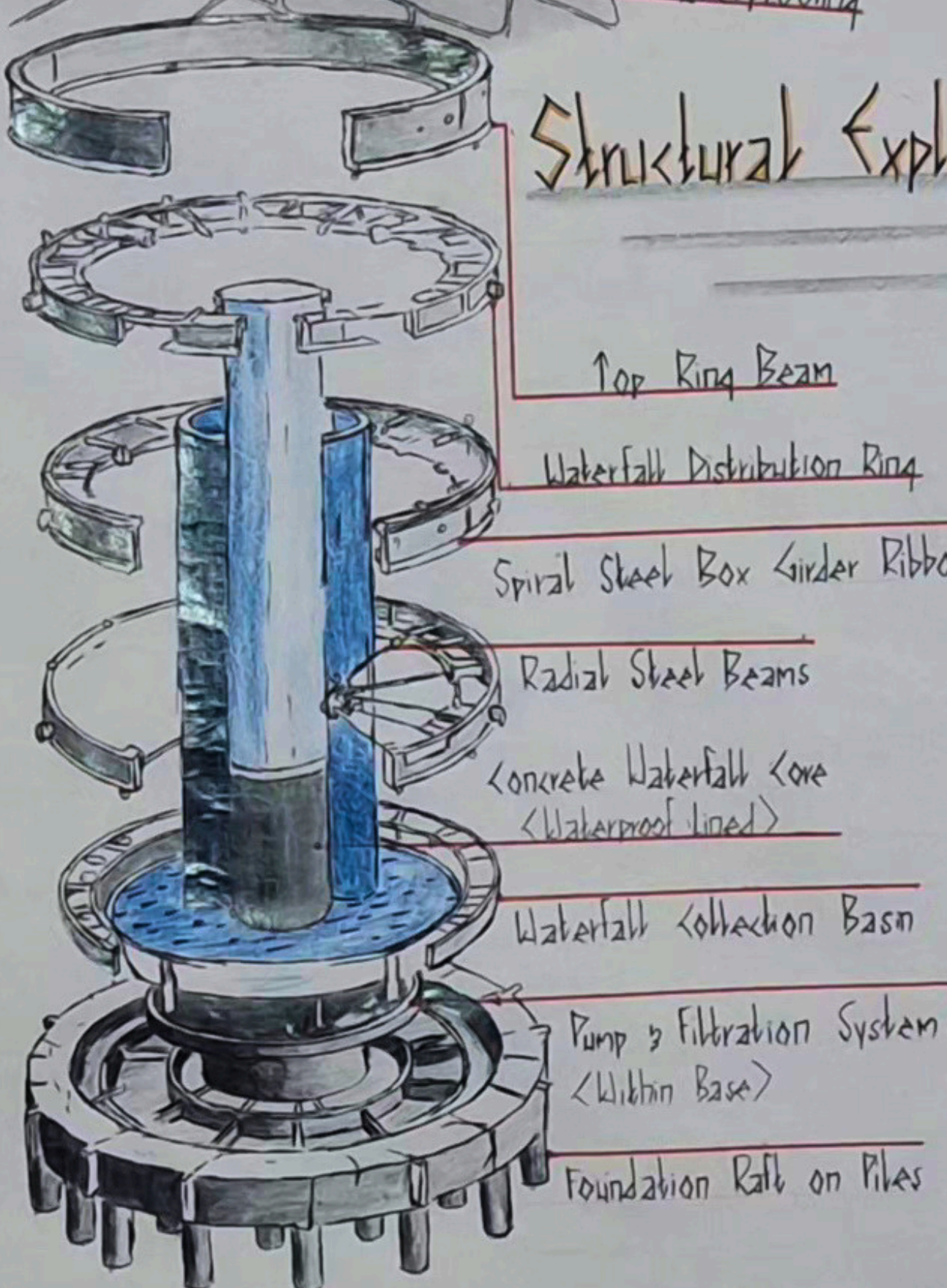
Spiral Memorial Waterfall Spine



Waterfall Core Detail



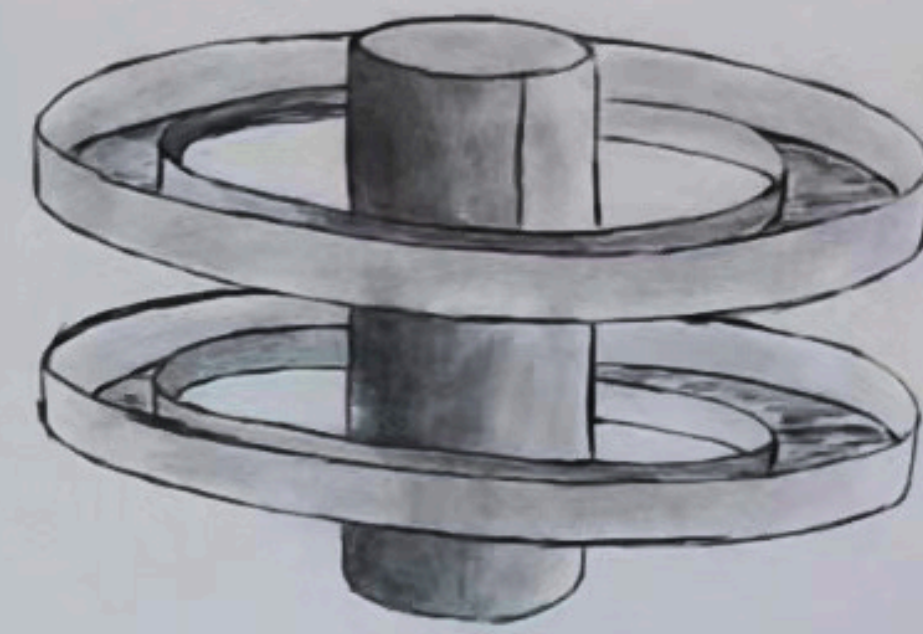
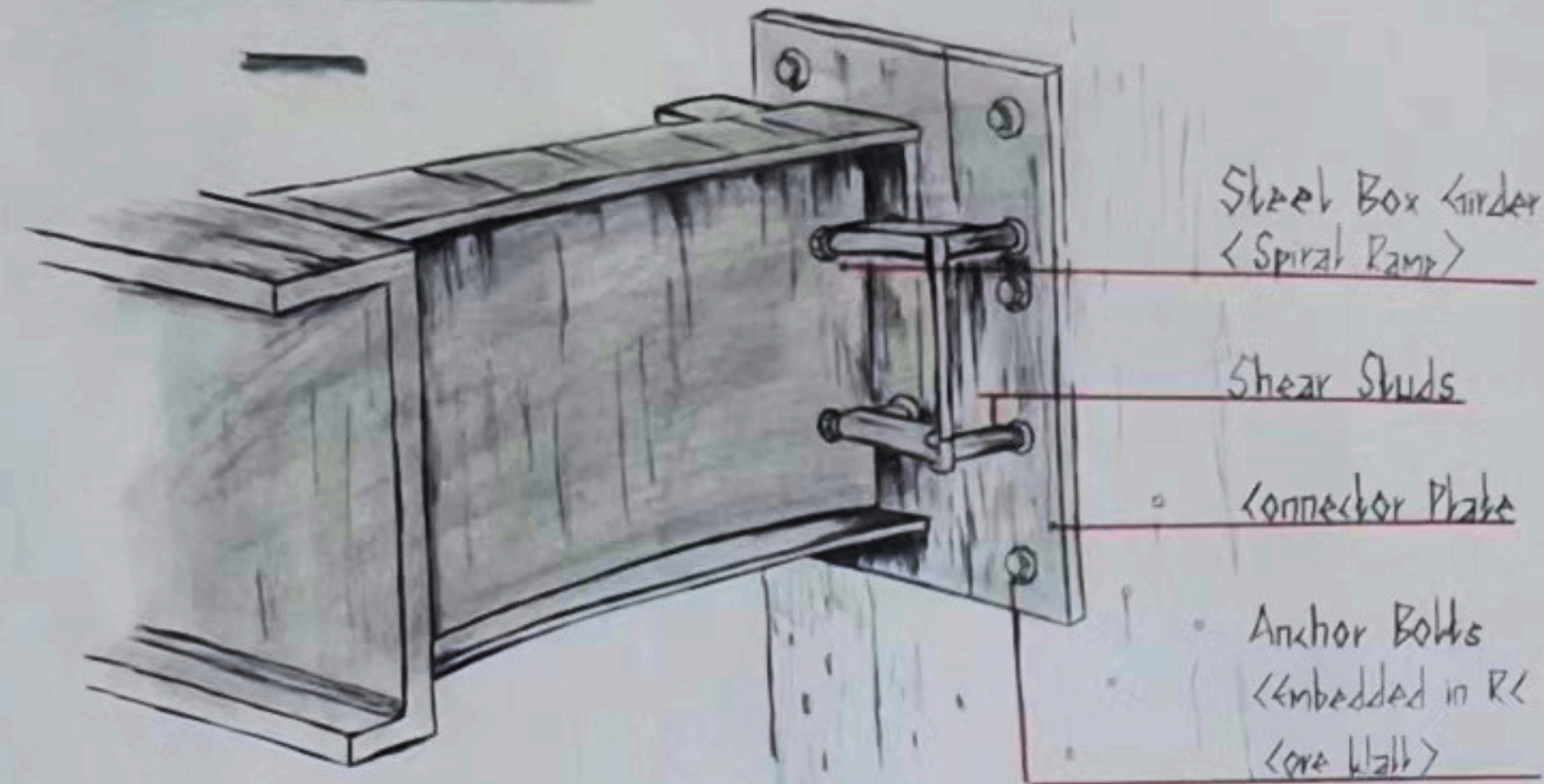
Structural Exploded Diagram



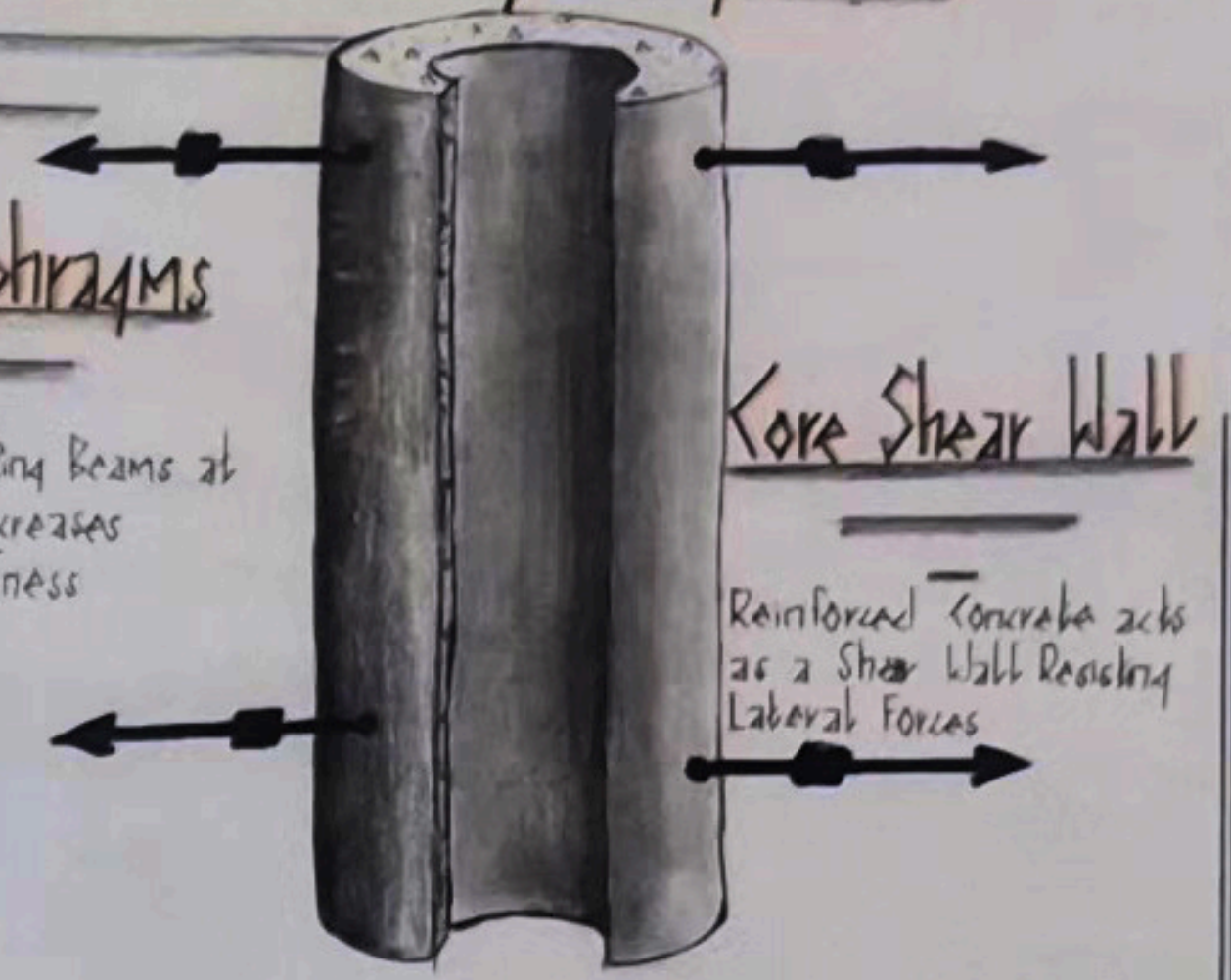
Rose Ojankor
AB5211-0008/2023
Detailing

Torsional and Lateral Stability Systems

Spiral to RC Core Connection



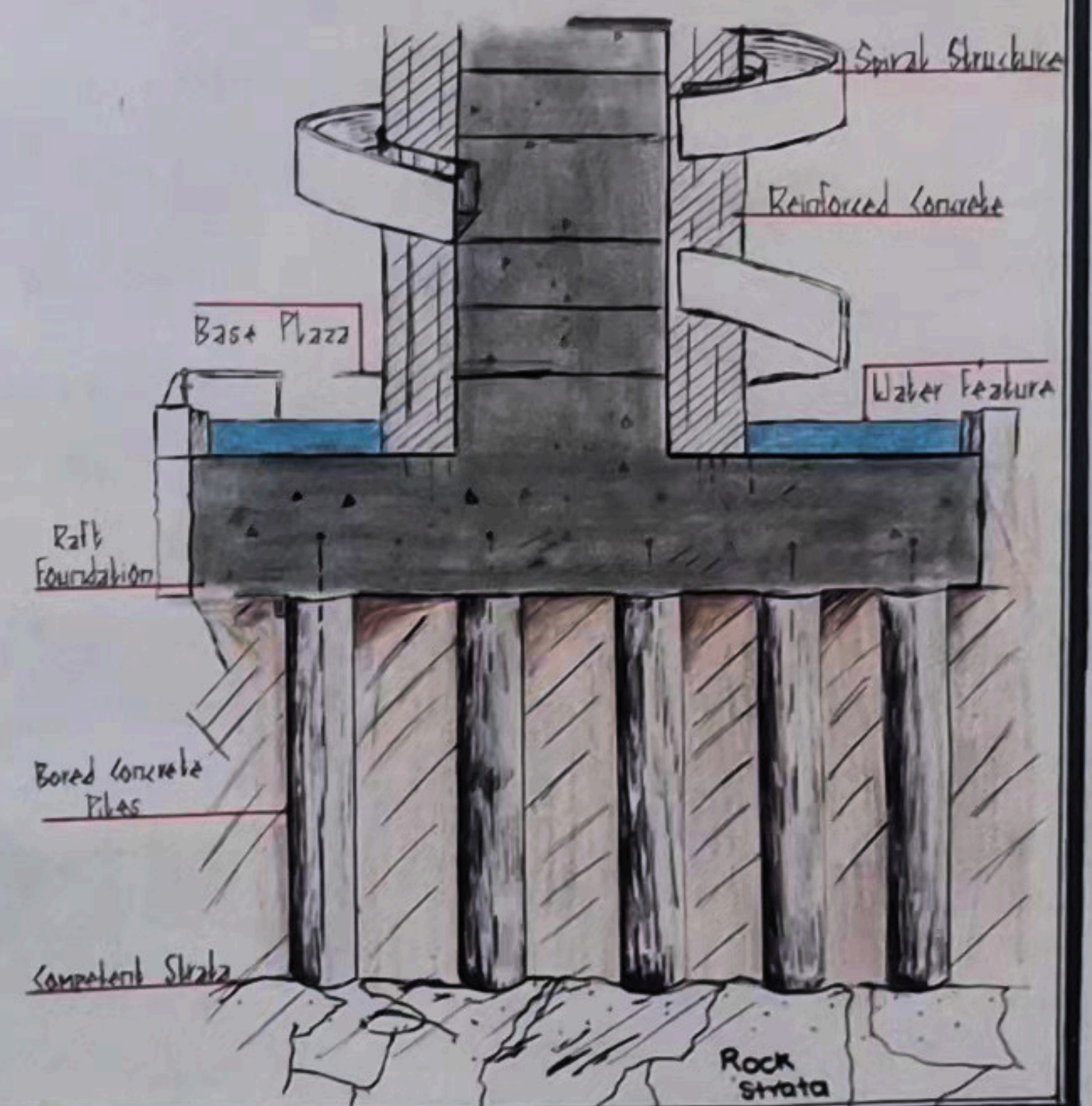
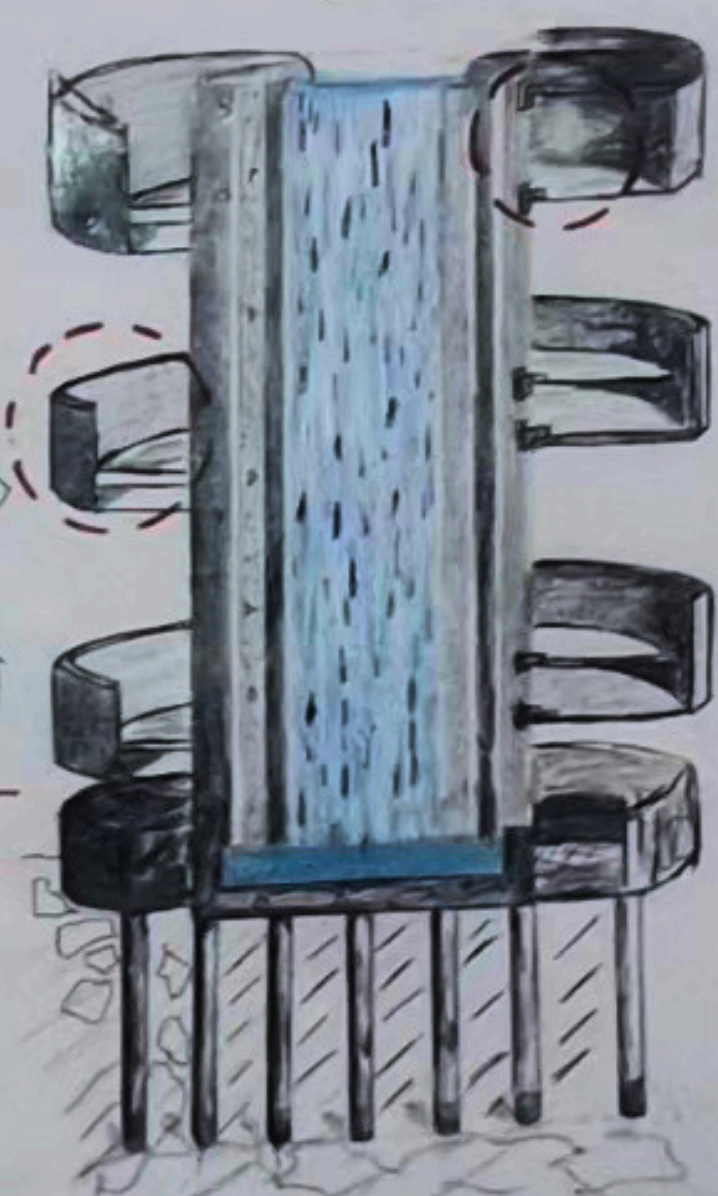
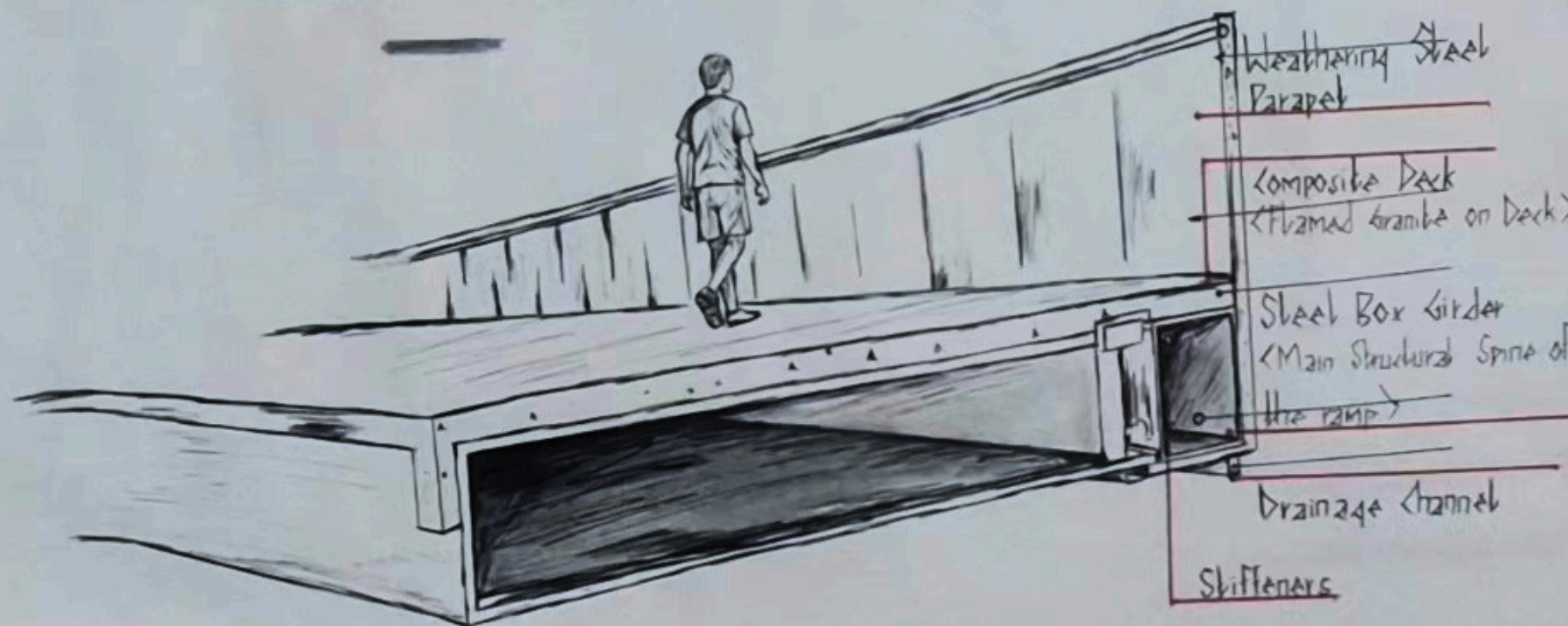
Ring Diaphragms



Vertical Section

Foundation Section (Piled Raft)

Typical Spiral Ramp Section



Rose Ojang'or
Abs 211-0008/2023
Detailing

DETAILING

1. DARK GALLERY COLONIALISM

The journey begins in darkness, symbolizing the oppression, exploitation, and suffering endured under colonial rule.

LOW LIGHT LEVELS
Creates a somber, oppressive atmosphere.

WARM FOCUSED LIGHTING
Highlights pain points and moments of injustice.

NARROW, CURVED PATH
Evokes a sense of confinement and disorientation.

RAW MATERIALITY
Dark walls and textures reflect hardship and dehumanization.



COLONIAL RULE 1895-1963

The people of Kenya endured and experienced forced labour, taxation and cultural suppression under colonial rule.



RESISTANCE 1905-1952

From the early struggle to the Mau Mau movement, Kenyans resisted against and fought for dignity and freedom.



VOICES OF COURAGE

"They tried to bury us.
They did not know
we were seeds."
-Ngũgĩ Proverb



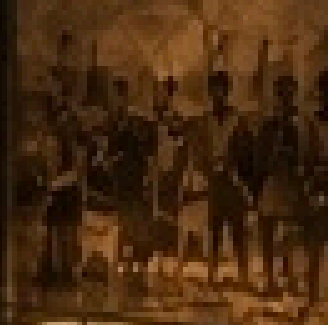
DETENTION & OPPRESSION 1952-1960

Prisoners were detained without trial, tortured, and denied basic human rights.



THE STRUGGLE CONTINUES

The fight was not just for independence, but for justice, equality and a better future for all.



2. BRIGHT GALLERY LIBERATION

The journey culminates in light — representing hope, resilience, unity, and the ongoing pursuit of a better future.



NATURAL DAYLIGHT
Symbolizes hope, clarity and freedom.



OPEN, RECTILINEAR SPACE
Creates a sense of openness and possibility.



LIGHT MATERIALITY
Bright finishes reflect renewal and a new beginning.



VISUAL CONNECTION TO OUTDOORS
A reminder of freedom, growth and the future.



COLONIAL RULE 1895-1963
The imposition of foreign rule brought land alienation, forced labor, taxation, and the suppression of our ways of life.

THE STRUGGLE CONTINUES 1964 AND BEYOND
The fight for justice did not end with American troops. It continued in the pursuit of a more just society.

DETAINMENT AND OPPRESSION 1952-1960
Those who resisted were detained, tortured and deprived, for the spirit of resistance would not be extinguished.

The journey ends in light, but the memory remains.