



DAR  
The Resilient Horizon

# Research

مركز الملك سلمان للإغاثة والأعمال الإنسانية  
KING SALMAN  
HUMANITARIAN AID & RELIEF CENTRE

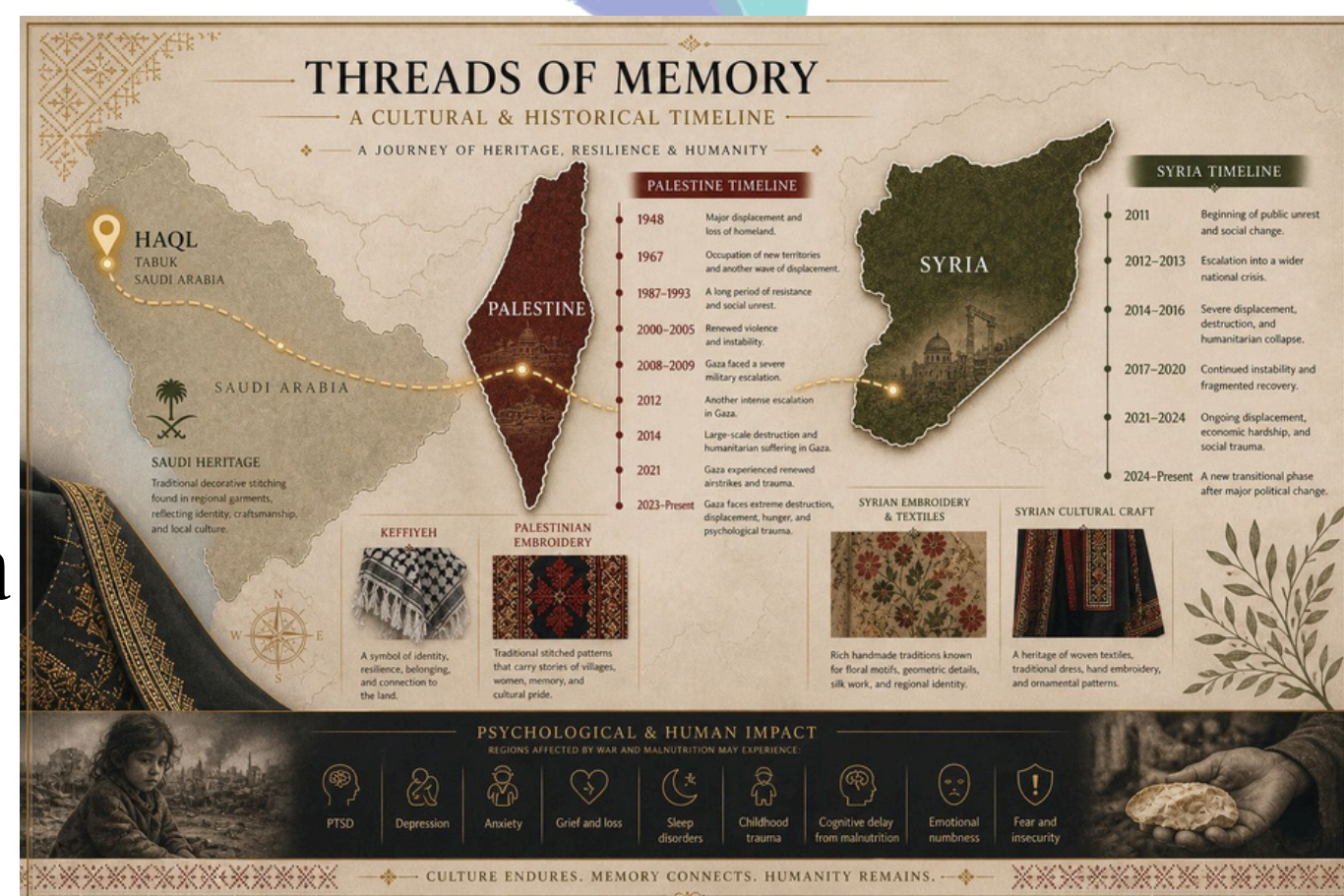


برنامج تحول  
القطاع الصحي



رؤية  
2030  
المملكة العربية السعودية  
"KINGDOM OF SAUDI ARABIA"

## HISTORICAL TIME LINE



## The Humanitarian Role in Palestine and Syria

### ESSENTIAL SERVICES & MEDICAL CARE

- EDUCATION HEALTHCARE EMERGENCY CARE
- PRIMARY EDUCATION & VOCATIONAL TRAINING (UNRWA)
- EMERGENCY SURGERY & FIELD HOSPITALS (MSF, ICRC)
- MEDICAL SUPPLIES & TRAINED STAFF
- SCHOOL
- EDUCATION SURGERY & FIELD HOSPITALS (MSF, ICRC)
- EMERGENCY SURGERY & FIELD HOSPITALS (MSF, ICRC)
- MEDICAL SUPPLIES & TRAINED STAFF

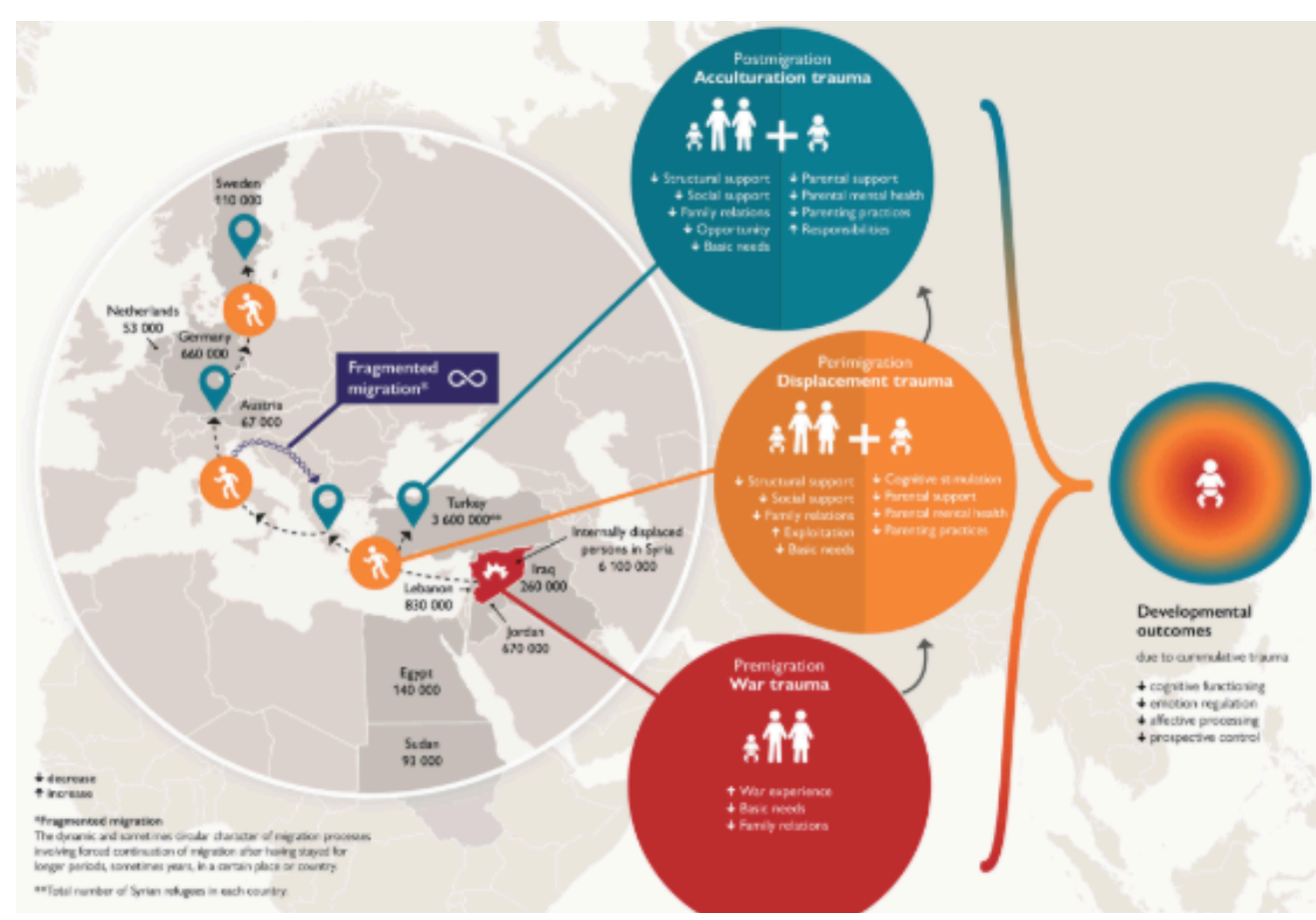
### BASIC NEEDS & RELIEF

- FOOD WATER SHELTER
- FOOD AID & NUTRITIONAL SUPPORT (WFP)
- CLEAN WATER & SANITATION SYSTEMS
- EMERGENCY SHELTER KITS & REPAIRS
- CROSS-BORDER AID DELIVERY
- LOGISTICS COORDINATION

### PROTECTION & DISPLACEMENT

- PROTECTION DISPLACEMENT INTERNATIONAL SUPPORT
- REFUGEE CAMP MANAGEMENT (UNHCR)
- PROTECTING CIVILIANS & CHILDREN
- MONITORING HUMAN RIGHTS VIOLATIONS
- PROTECTING CIVILIANS & CHILDREN
- MONITORING HUMAN RIGHTS VIOLATIONS
- ADVOCACY FOR INTERNATIONAL LAW

**\* Psychological Disorders: Addressing Post-Traumatic Stress Disorder (PTSD), Toxic Stress, Collective Trauma, and Severe Anxiety caused by siege and loss.**



**In Palestine**  
 \* Essential Services: UNRWA provides education and healthcare to refugees.  
 \* Medical Care: Organizations like MSF and the Red Cross support hospitals and provide emergency surgery.  
 \* Basic Needs: Food and water distribution to areas under blockade or conflict.

**In Syria**  
 \* Displacement Support: UNHCR provides tents and supplies for millions of displaced people.  
 \* Aid Delivery: Coordinating "cross-border" shipments of food and medicine to hard-to-reach areas.



## case study 1 Case Study: King Salman Humanitarian Aid and Relief Center (KSrelief)

\* **Introduction and Establishment:** Founded in 2015 as the sole Saudi entity authorized to provide and coordinate foreign aid.

\* **Headquarters:** Riyadh, Saudi Arabia.

1. **Inclusivity:** Its aid is provided without discrimination based on religion, race, or ethnicity, and it operates in more than 90 countries.
2. **International Coordination:** A strategic partner of the organizations you mentioned earlier (such as OCHA, UNICEF, and WHO).

مركز الملك سلمان  
للإغاثة والأعمال الإنسانية  
KING SALMAN  
HUMANITARIAN AID & RELIEF CENTRE



## case study 2 Maggie's Centres (Global Chain)

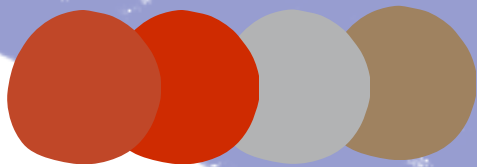
\* **Location:** Distributed throughout the UK and internationally (e.g., Manchester, Edinburgh, and Hong Kong).

\* **Heart of the Centre:** Each centre is designed around a large communal kitchen table to create a comfortable, home-like atmosphere.

\* **Open Design:** The design features a network of courtyards that seamlessly blend indoor and outdoor spaces.

\* **Human-Centered Design:** Single-story buildings with mezzanine levels and triangular skylights to maximize natural light.

\* **Inspiration for the Centre:** The concept of "architecture as a therapeutic tool," where the environment itself contributes to the healing process.



## case study 3 Friendship Hospital (Kashif Chowdhury/Urbana)

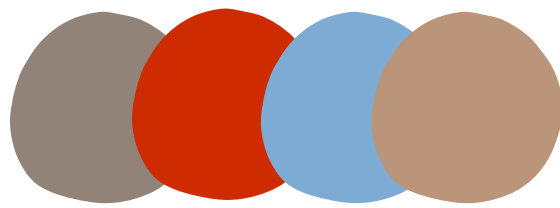
\* **Location:** Shyamagar, Satkhira, Bangladesh (a remote rural delta).

\* **Winding Canal:** A central water channel divides the site, separating inpatient and outpatient wards, and contributing to natural air cooling.

\* **Ward System:** The hospital comprises a series of low-rise brick wards, interspersed with tranquil courtyards that allow light and air to circulate.

**Rainwater Harvesting:** Large tanks on either side of the canal collect rainwater, a vital resource in an area with saline groundwater.

**Dar's Inspiration:** "Visual continuity" through water and courtyards, and the use of simple local bricks to create an effective and cost-efficient therapeutic environment.



## case study 4 UNICEF

\* **Definition:** The world's leading organization dedicated to the rights and protection of children and women.

\* **Origins:** Founded in 1946 to provide relief to children in Europe after World War II.

2. **Medical Supplies:** The world's largest provider of vaccines to refugees and disaster-stricken areas.

3. **Water, Sanitation and Hygiene (WASH):** Ensuring clean drinking water in refugee camps to prevent disease outbreaks.

4. **Family Reunification:** Working to reunite children separated from their families by war.

**UNICEF's Role in the Dar Project (Relief and Refugees):**

1. **Protecting Refugee Children:** Providing "child-friendly spaces" in camps for psychosocial and educational support.

**Headquarters:** New York, USA.



unicef



# Concept:

The project emphasizes containment by treating roofs and skylights as interactive elements. Inspired by color and movement to alleviate trauma, it uses suspended installations and colorful canopies to create a protective space. This design aims to shift residents' perspectives from fear to contemplation and harmony.



syrian Tatreez( al jazera )

K u f I y a

Palestinian Tatreez

saudi sudu

## Psychological Treatments

- \* EMDR: Minimalist, quiet pods for focused trauma processing.
- \* Exposure Therapy: Gradual spatial transitions from safe nooks to open areas.
- \* Art & Heritage: Using Tatreez and Sadu to restore cultural identity.
- \* Biophilic: Skylights and natural shadows to reduce stress levels.
- \* Group Therapy: Communal hubs under the canopy for collective healing.

## Wings of Hope: Kite Festival

- \* Concept: A community art event where patients and international visitors paint kites with Sadu and Tatreez patterns.
- \* Goal: To blend Saudi and Palestinian heritage with global symbols, representing freedom and recovery.
- \* Activity: Visitors fly these "flying canvases" over the Haql coast, turning the sky into a bridge of solidarity and peace.

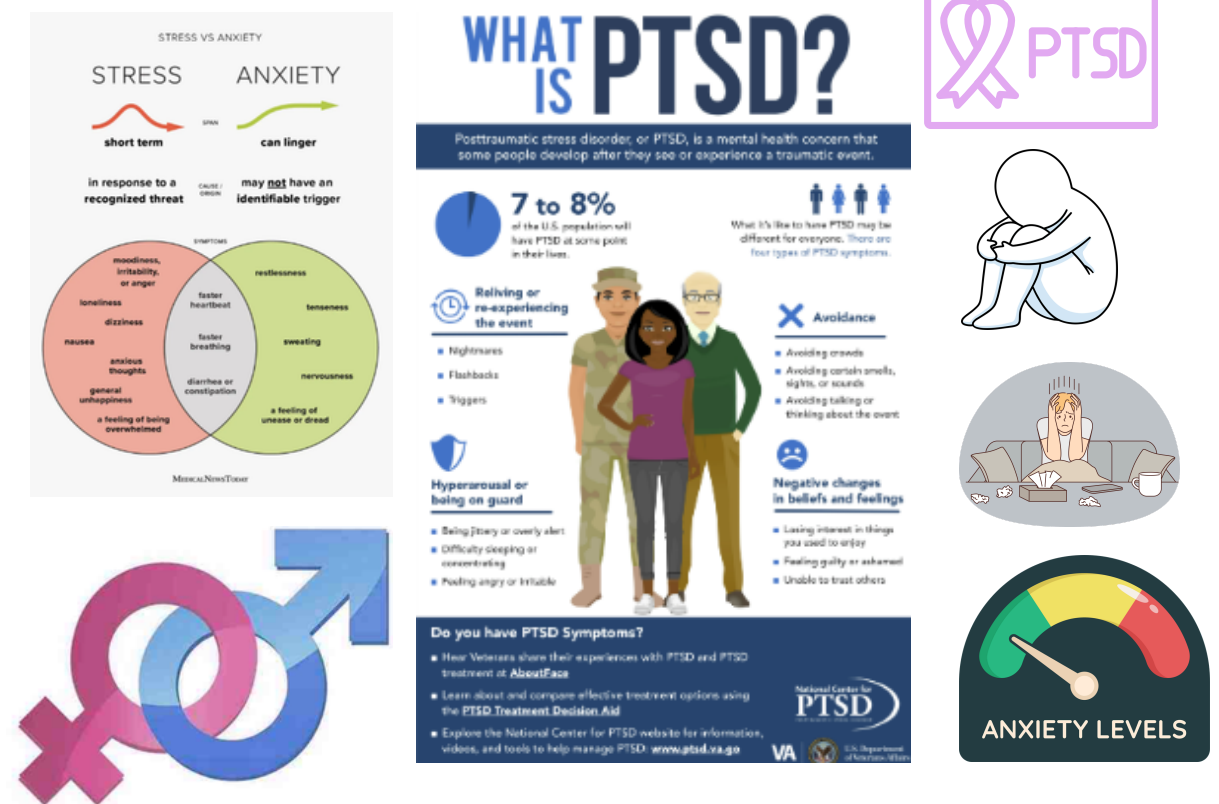
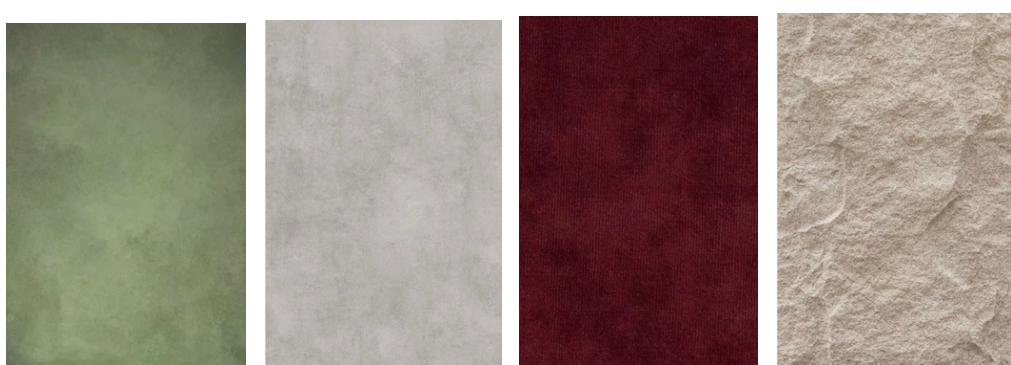
## MOOD BOARDED



## colore scheme



## material



## Target Audience

\* Target Group: Survivors of conflict and forced displacement, with a special focus on children and traumatized families.



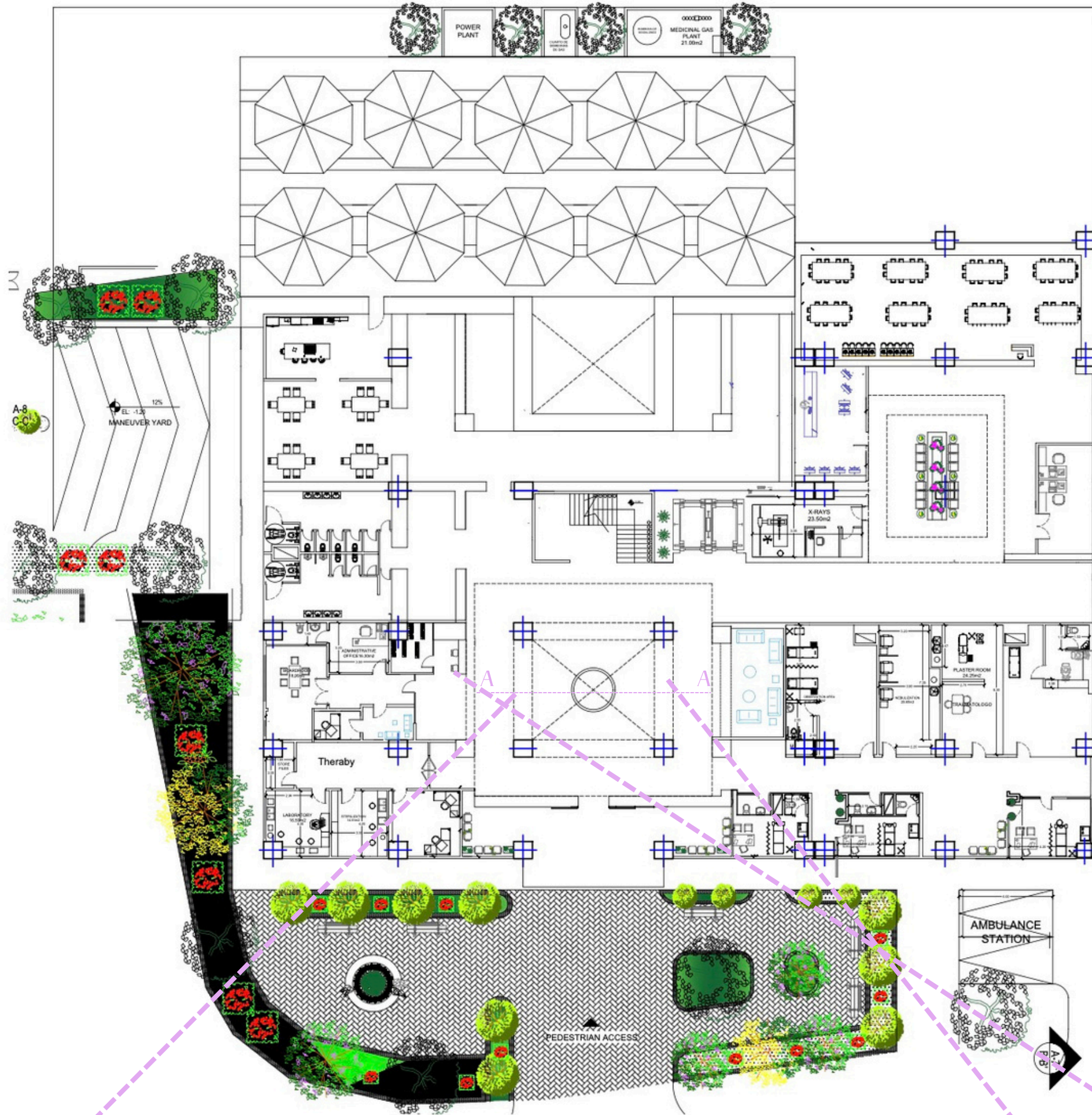
SDG 3 | Health & Well-being: Healing through Design. Using colors and heritage patterns (Saudi, Palestinian, Syrian) to treat trauma and boost mental health.

SDG 11 | Sustainable Communities: Inclusive Spaces. Designing safe, shaded, and culturally connected social hubs in Haql for displaced populations.

SDG 12 | Responsible Production: Eco-Materials. Using lightweight, recyclable, and local textiles (Sadu & Levantine weaving) to reduce environmental impact.

SDG 13 | Climate Action: Passive Solutions. Utilizing Haql's sun and sea breeze for natural shading and ventilation via kinetic ceiling elements.

# GROUND FLOOR



**MEDICAL LABORATORIES**

**MAIN ENTRANCE**

**kitchen dining room**

**work shop + KITE**

**WAITING AREA**

**ADMINISTRATIONS DEPARTMENT**

**SYRIAN TRADITIONAL COURTYARD**

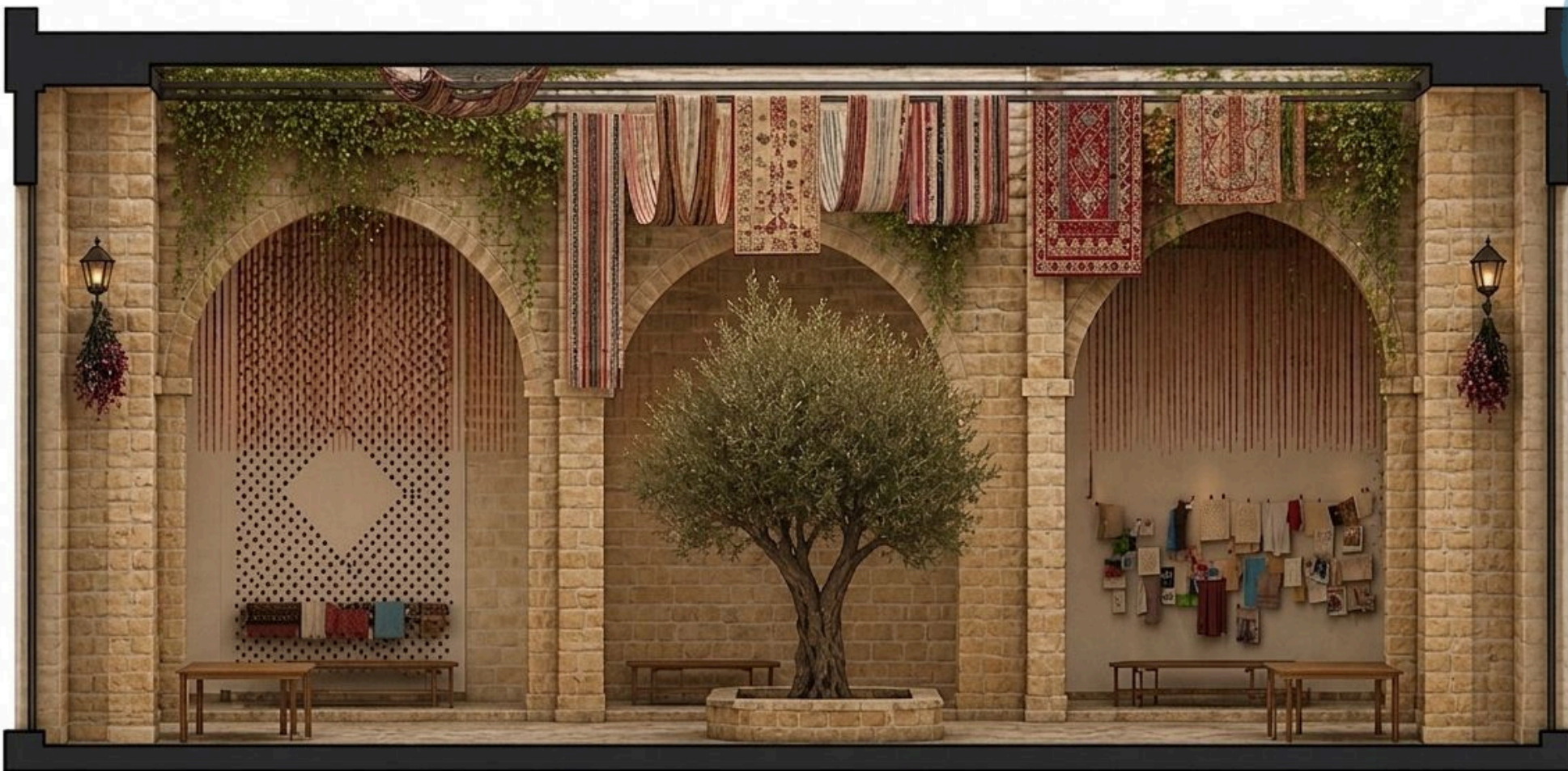
**Reception**

**THERAPY**

**GARDEN**

## SECTION

## 3D SHOUTS



## PLAN

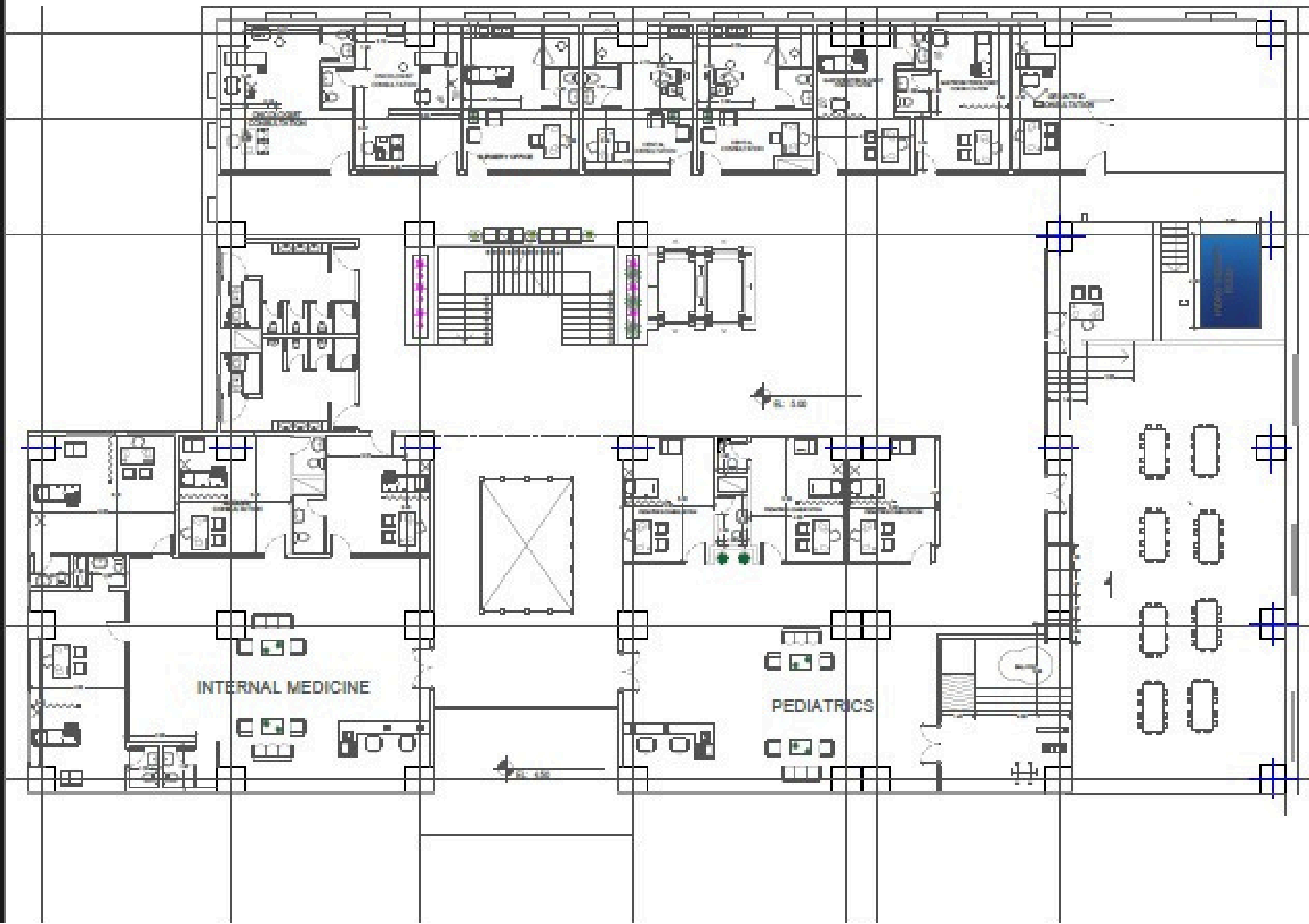
## 3D SHOUTS WAITING AREA

# FIRST FLOOR

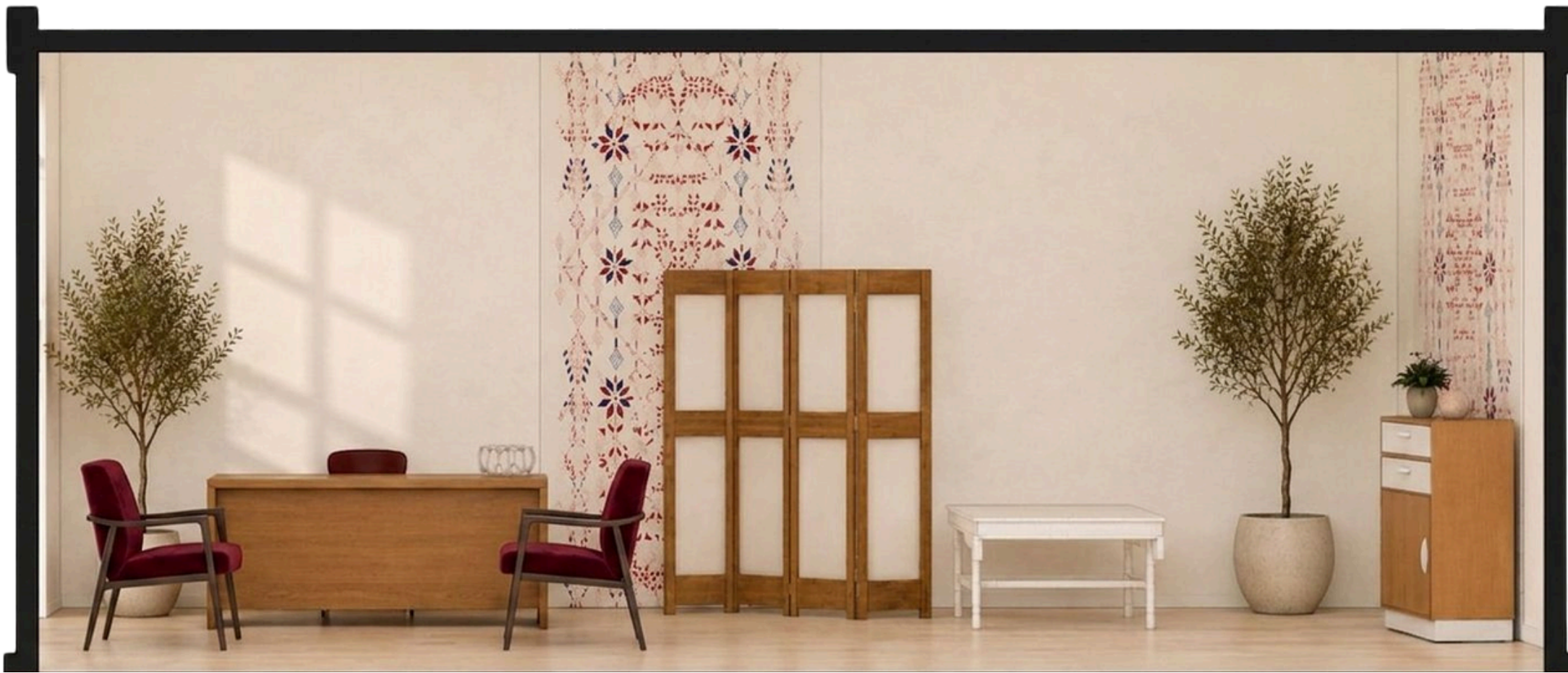
INPATIENT NUTRITIONAL  
REHABILITATION ROOMS  
MENTAL HEALTH ROOM

WAITING AREA

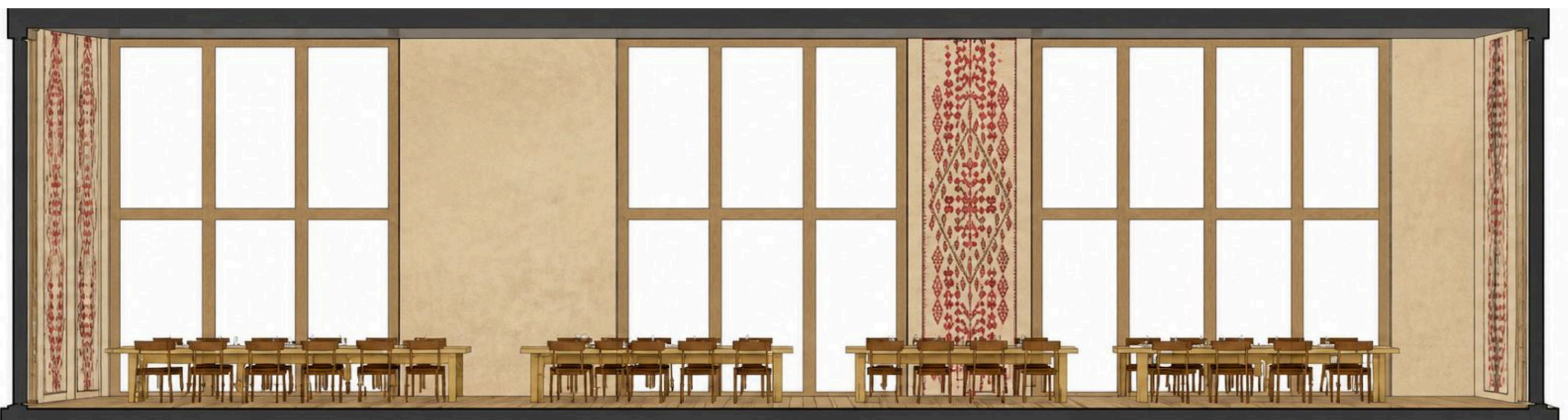
GROUP THERAPY



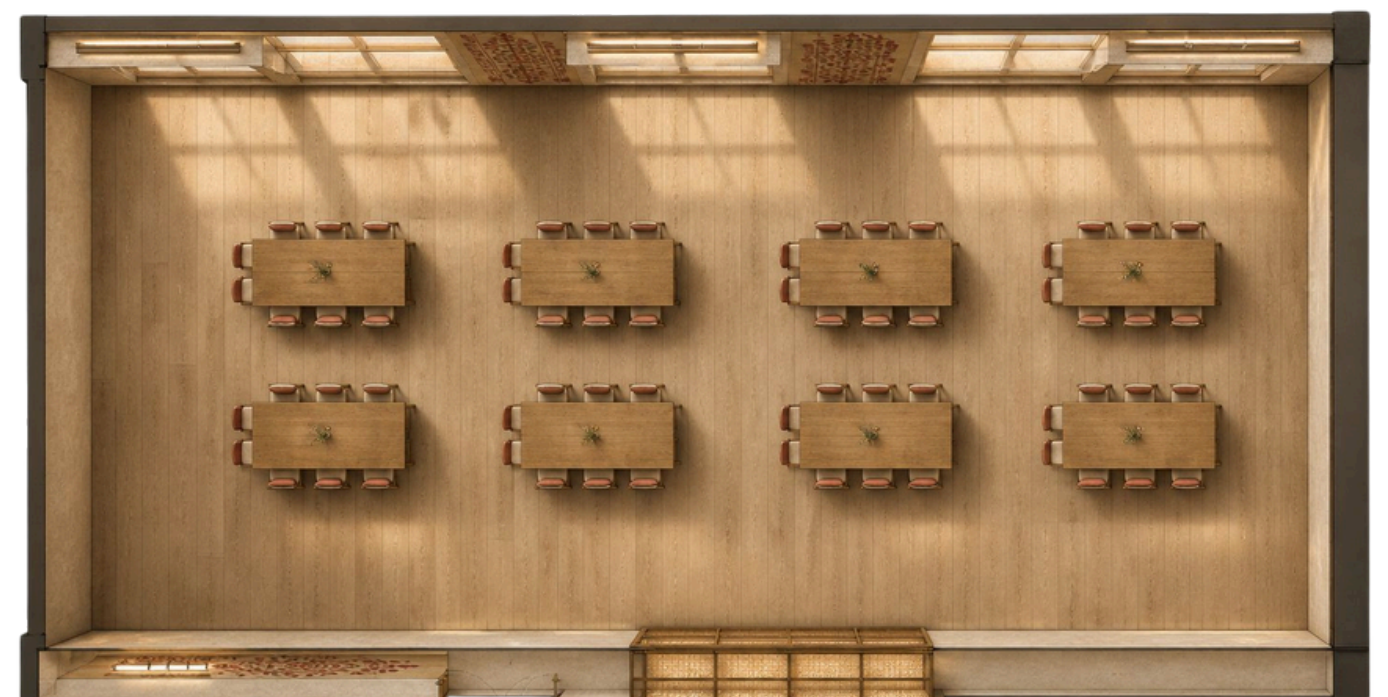
## 3D SHOUT



## PLAN



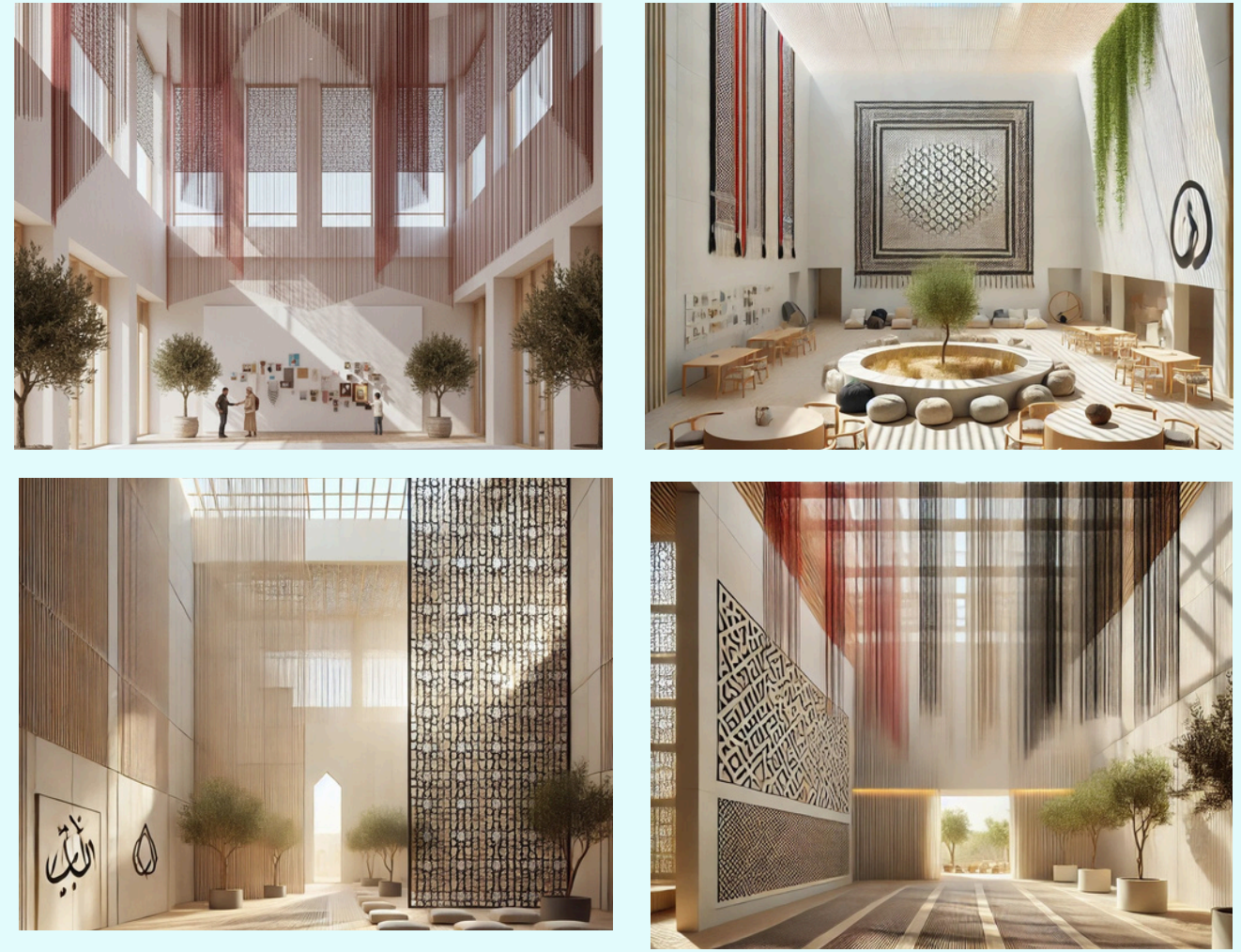
## 3D SHOUT



## PLAN



## AI GENERATED



## Site Analysis Study: Haql, Saudi Arabia

## Solar Radiation & Shading (Sun Path)

- \* **Site:** Saudi Arabia, Tabuk Region, Haql City.
- \* **Proximity:** 6.2 km from Al-Durra Border Crossing.
- \* **Strategic Advantage:** Direct visual connectivity to the Gulf of Aqaba and neighboring homeland mountains.

- \* **The Concept:** Haql is a high-sunlight coastal area.
- \* **The Study:** Mapping the sun's movement to identify areas of intense heat and glare.
- \* **Design Response:** Utilizing "Colored Shadow Patterns." The sun filters through hanging textile modules (Sadu & Levantine patterns) to create a natural, shifting "healing carpet" on the floors throughout the day.

## Demographic & Psychological Study

- **\*\*Geographic Context & Visual Axis\*\*:** Haql acts as the "Gateway" connecting Saudi Arabia to the Levant. The study focuses on the visual connection between the site and the Gulf of Aqaba.
- \*\*Design Response\*\*:** The "Cheerful Sky" ceiling creates a visual bridge using coastal turquoise colors to link the sea's horizon with the interior space.

- \* **The Concept:** Addressing the trauma of displaced populations.
- \* **The Study:** Analyzing the psychological needs of refugees (Need for safety + Need for joy).
- \* **Design Response:** Replacing the "Fearful Sky" (associated with conflict) with a "Protective Canopy." Every design element in the site is chosen to provide a sense of "Enclosure" (Saudi hospitality) and "Vitality" (Levantine spirit).

## Wind Flow & Kinetic Movement

## Vernacular & Hybrid Identity (Materiality)

- \* **The Concept:** Utilizing the constant Sea Breeze from the Gulf.
- \* **The Study:** Identifying the prevailing North-Western winds.
- \* **Design Response:** The ceiling elements (Umbrellas/Kites) are designed as Kinetic Installations that move gently with the breeze, providing natural ventilation and a calming, rhythmic visual effect for the residents.

- \* **The Concept:** A fusion of Saudi, Palestinian, and Syrian heritage.
- \* **The Study:** Researching local materials in Haql (Granitic rocks, sand, palm fibers) vs. Levantine textiles.
- \* **Design Response:** Using Lightweight Tensile Fabrics (Hybrid of Sadu and Embroidery threads). This reduces the thermal load of the building while making the displaced population feel "at home" through familiar cultural textures.

### THE HYBRID IDENTITY PALETTE

### THE HYBRID IDENTITY COLOR MATRIX: HORIZON OF CONVERGENCE

