

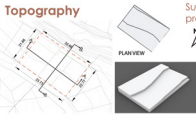


Site- ETHIPIOA, ADDIS ABABA, LIDETA



The site has a total area of = 748.03 sqm approximately 750 sqm

Topography



more gentle slope



Sun Path, Orientation & prevailing wind direction



VEGETATION

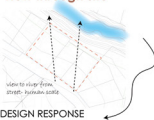


SYNTHESIS

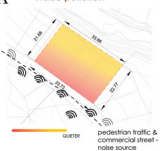
MOVEMENT, NOISE & UTILITY LINE



view through site



Noise pollution



Electricity line sewage line



Historical and Vernacular influence

Use of stone, wood and earth based materials in most homes



Shared space centered layout



Pitched roofs and textured facades

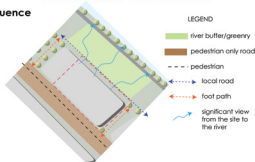


Common materials in the area

Material	Use
Corrugated metal	Roofing, fencing
Wood and mud	Structural walls, partitions, doors, window frames
Stone	Foundation, retaining walls
Concrete block	Structural walls, partitions



ACCESS AND CIRCULATION



LEGEND

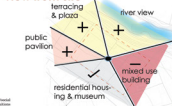
- river buffer/greenery
- pedestrian only road
- pedestrian
- local road
- foot path
- significant view from the site to the river

regulatory and legal consideration

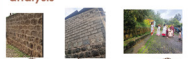
FAH- 23
AREA 750SQM
Landscape -30% 225SQM
Building area-550SQM
Minimum floor- 7.50/2.5/2.5
+3.5



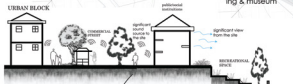
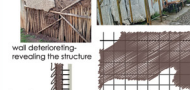
view from site



patterns(color & texture) analysis



earthy toned colors cover the site.
Textured facades and roofing Material mix. Revealed structure



view to site



DESIGN RESPONSE



Cultural library

local identity + community living room

PROGRAM

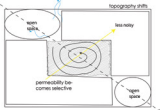
Events

1. Story - artist event
 - Reading hall
 - Cafe
 - Bookshelving
 - Archive space
 - Reference desk
 - Auditorium
 - Reception
 - Signage
 - Storage
 - Children's reading space
2. Learning
 - Seminar/meeting room
 - Seminar hall
3. Cultural venue - vent outdoor and outdoor
 - Cultural exhibition
 - Art installation space
 - Reception
4. Community/social interaction
 - Outdoor seating space (board games etc)
 - Coffee shop
 - Storage space
 - Storage
 - Presentation area
 - Colours space
 - Book store
 - Coffee area
 - Event programming
5. Administration
 - Office
 - Staff lounge
6. Storage (operational & mechanical spaces)
 - Store
 - Trash
 - Circulation

CONCEPT- PERMEABILITY

Material Expression of Porosity

- diagrid with wood - achieve open plan
- Vertical fins responding to sun angle.
- Layered façades (solid + void).
- Transparent ground level glazing.

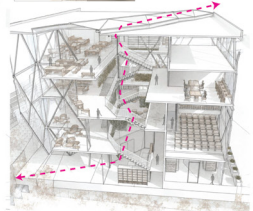
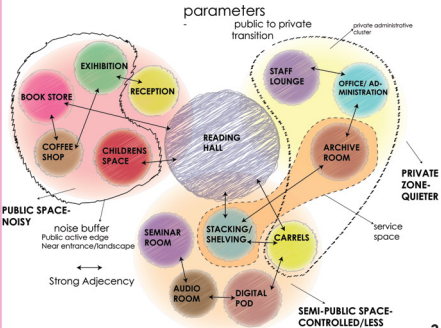


openness
filtered boundaries
light filtering through building

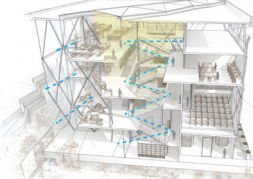
- half-level shifts
 - visual overlaps
 - staggered floors
- Visual permeability
- Voids between floors
- layered envelopes
- Perforated facade
- Movement is not linear but permeable and exploratory.
- Visual connections between floors.
 - Reading pockets embedded along paths.



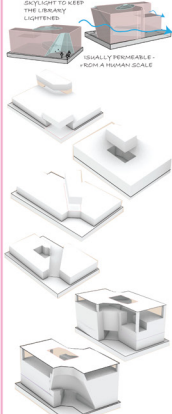
Functional relationship



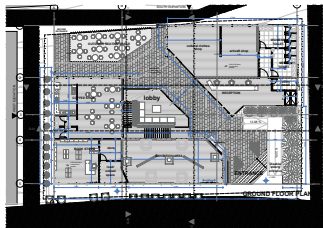
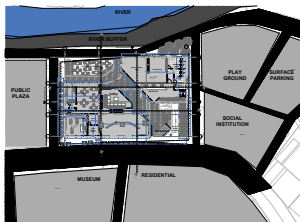
3D SECTION- VISUAL CONNECTION DIAGRAM



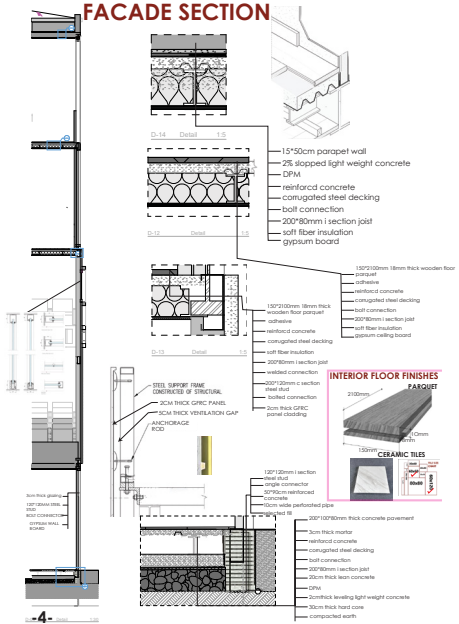
FORM DEVELOPMENT

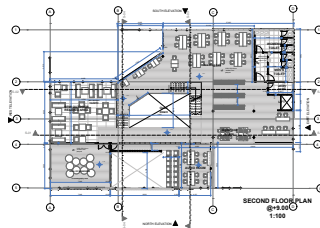
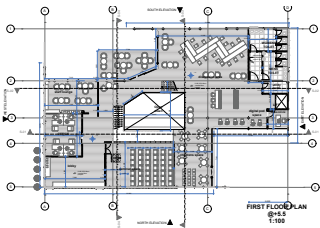


PLANS

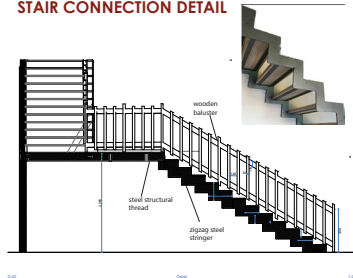


FACADE SECTION

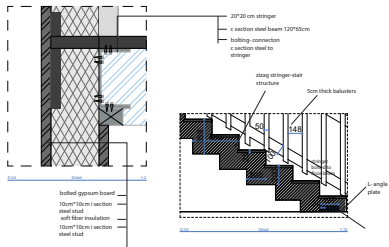


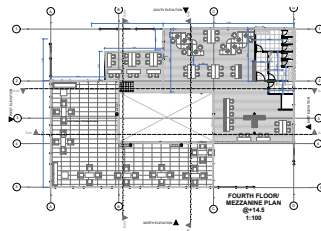
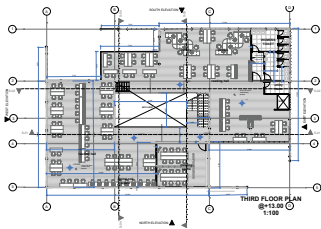


STAIR CONNECTION DETAIL

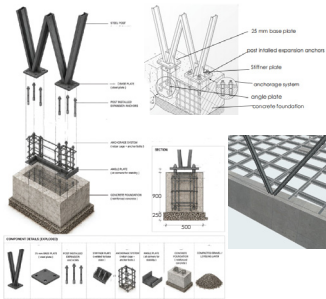


0.00 0.00 0.00

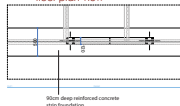




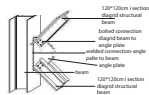
FOUNDATION CONNECTION DETAIL



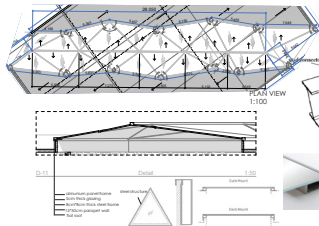
floor plan view



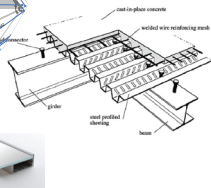
DIAGRID TO BEAM CONNECTION



SKYLIGHT DETAIL



FLAT ROOF DETAIL



SECTIONS



ELEVATIONS



NORTH ELEVATION
1:100



WEST ELEVATION
1:100



SOUTH ELEVATION
1:100



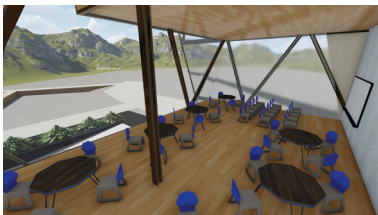
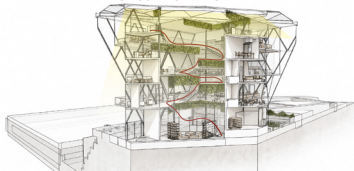
EAST ELEVATION
1:100



material legend

-  LOW E GLASS CLEAR & TRANSLUCENT
-  STEEL DIAGONAL STRUCTURE
-  PLASTERED CONCRETE
-  NATURAL STONE PENTH
-  EARTH

CIRCULATION DIAGRAM



3D visualizations

