

PROJECT STATEMENT

In the villages of Casamance, the tree is more than a natural element. It is the place where people gather, learn, negotiate, celebrate and transmit knowledge across generations.

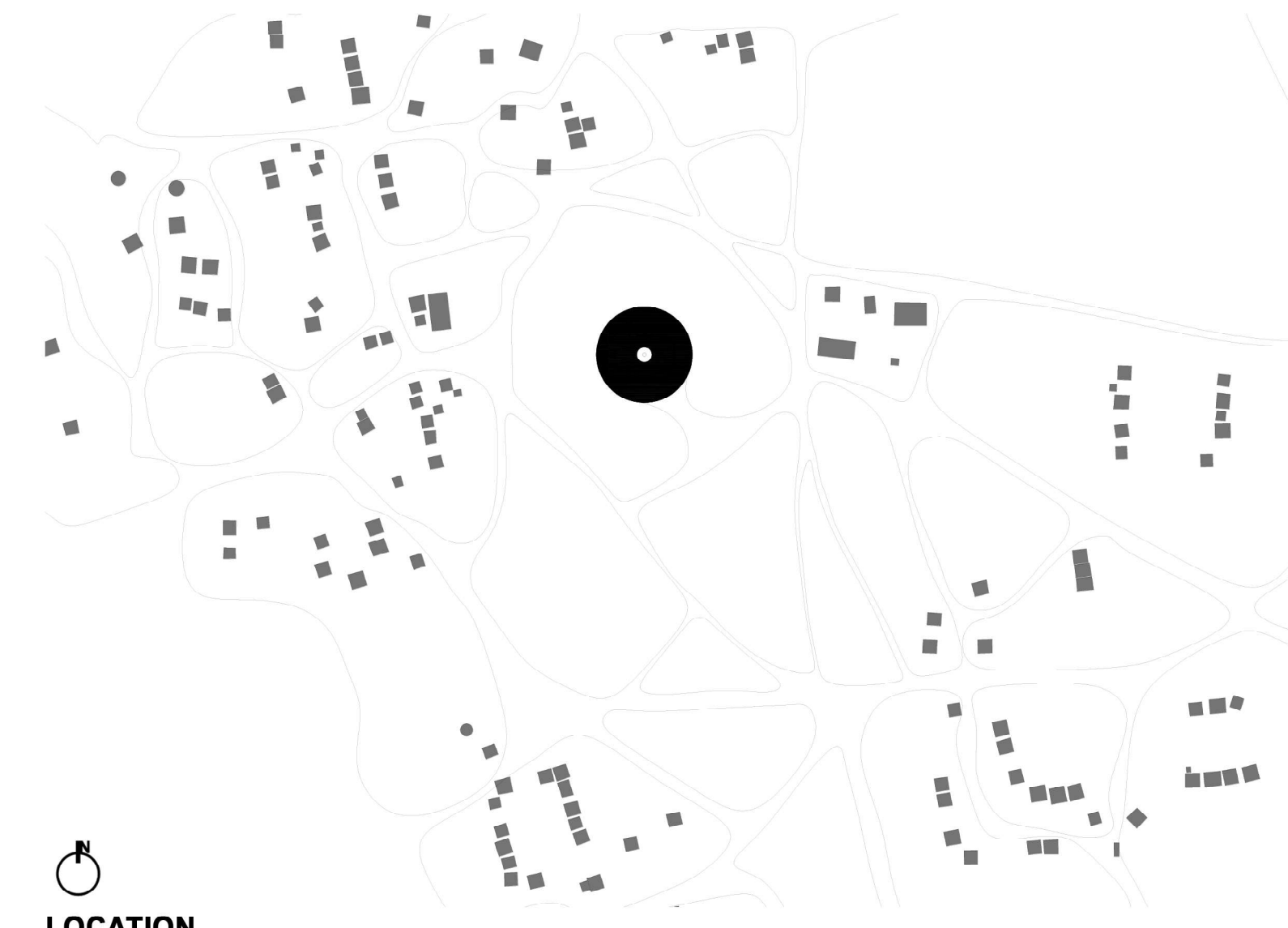
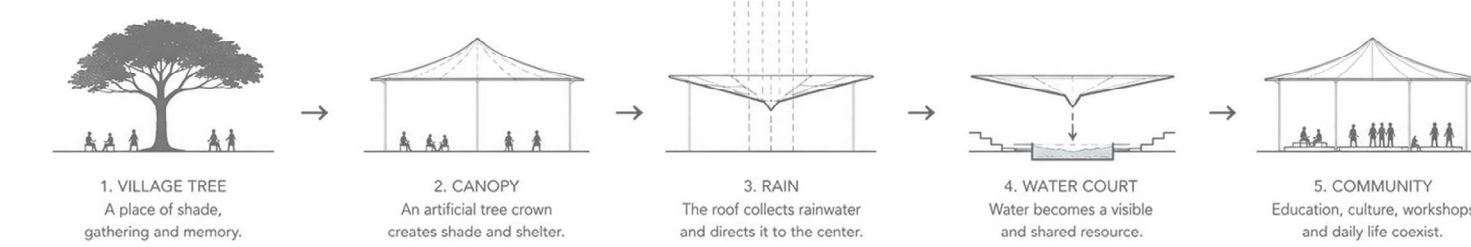
The project reinterprets this collective space as a contemporary Community Center. Rather than creating a monument, the proposal establishes an open framework where architecture becomes a support for community life. A large protective canopy creates shade, collects rainwater and brings people together around a shared water court. The project transforms climate, culture and everyday life into a single spatial system.

CONCEPTS

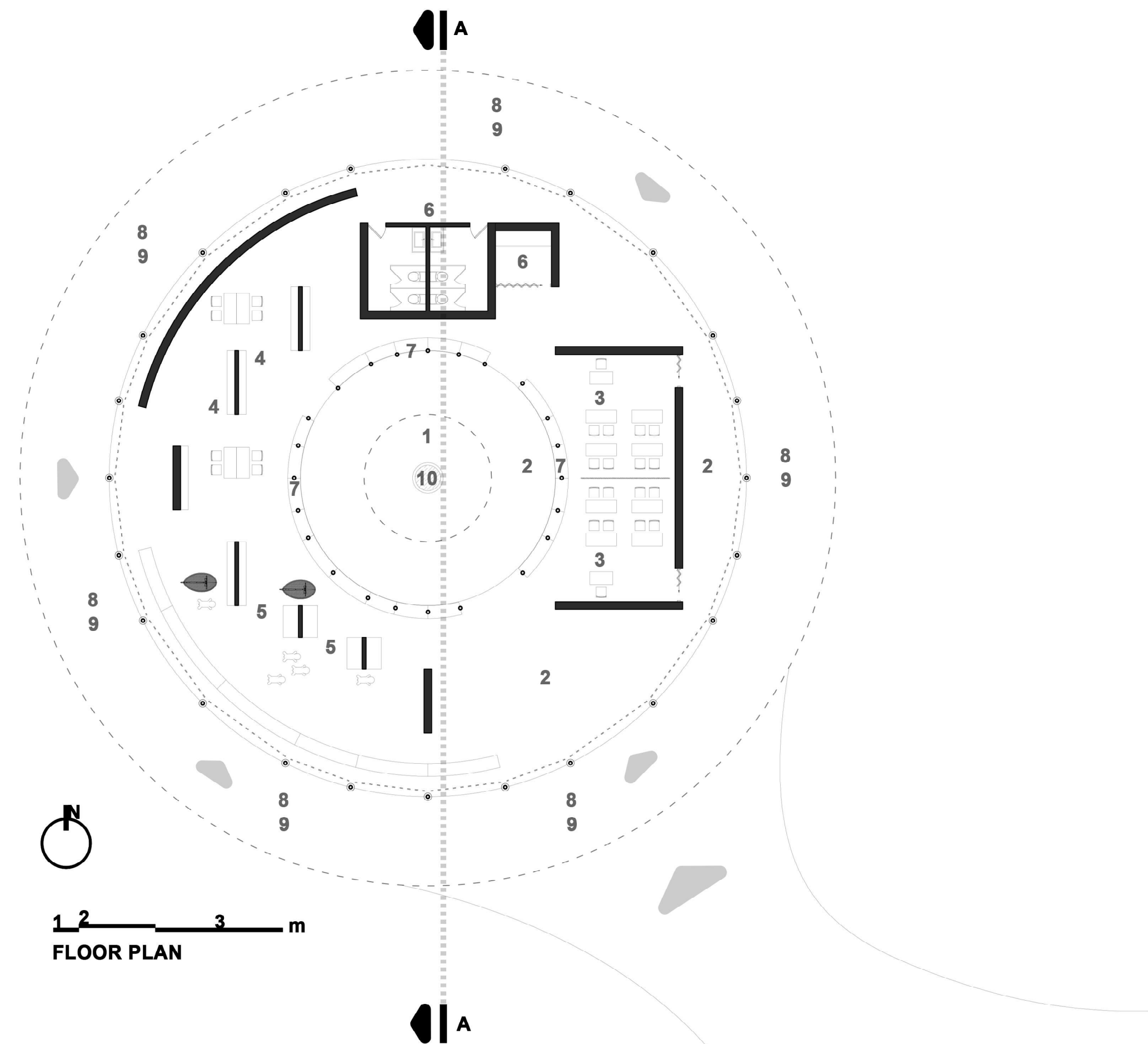
The project is inspired by the village tree, a symbol of collective memory in Southern Senegal.

The canopy acts as an artificial tree crown. Beneath it, education, cultural activities, workshops and community gatherings coexist within a flexible environment. Rainwater collected from the roof becomes a visible and shared resource, reinforcing the relationship between people, climate and place.

The architecture is intentionally open-ended. Its identity is not defined by walls or objects, but by the activities continuously generated by the community itself.



LOCATION

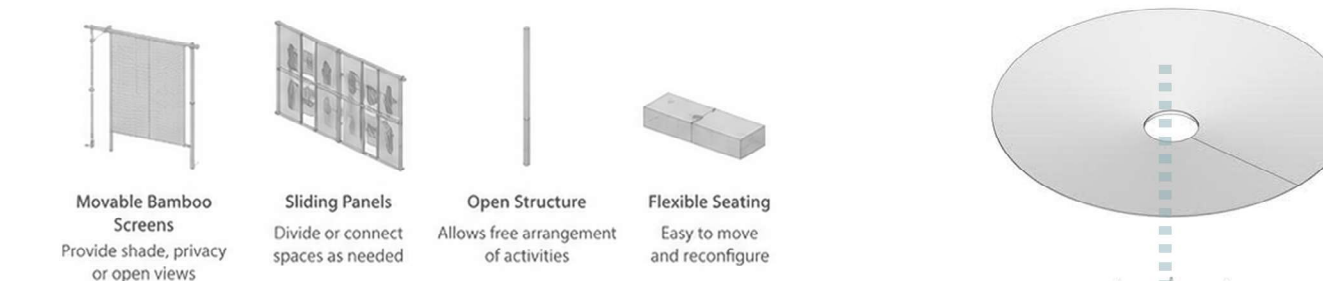


- 1. WATER COURT
- 2. COMMUNITY FORUM
- 3. EDUCATION AREA
- 4. LIBRARY & KNOWLEDGE HUB
- 5. CREATIVE WORKSHOP
- 6. SERVICES
- 7. RAIN GALLERY
- 8. COMMUNITY MARKET
- 9. TREE SHADE PLATFORM
- 10. WATER STORAGE & FILTRATION



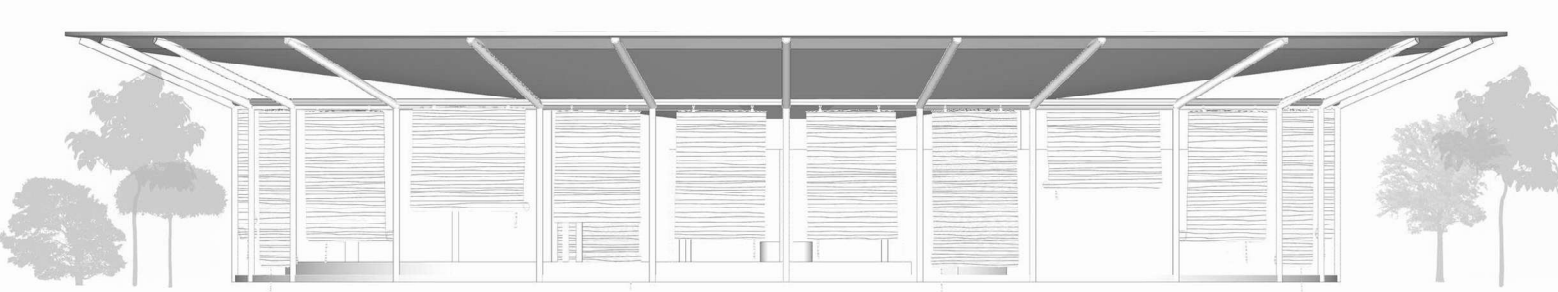
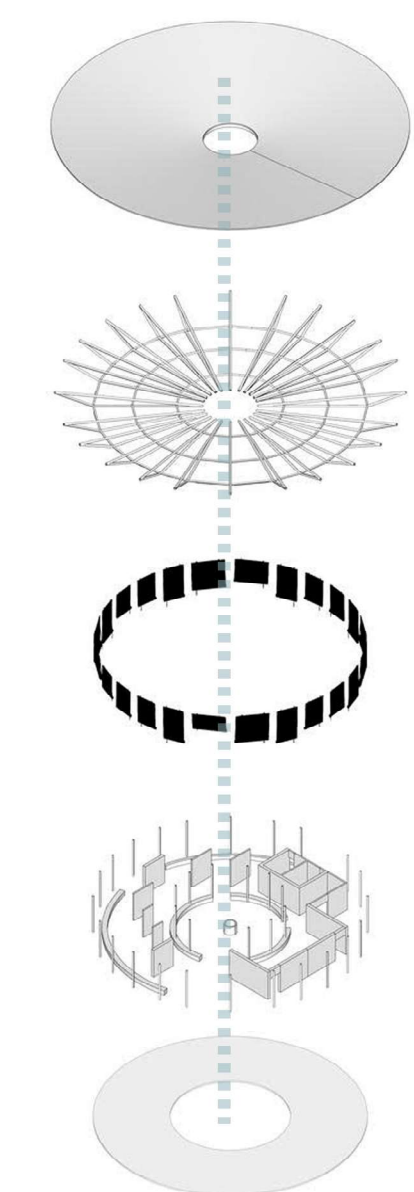
1 2 3 m
FLOOR PLAN

ADAPTABLE ELEMENTS

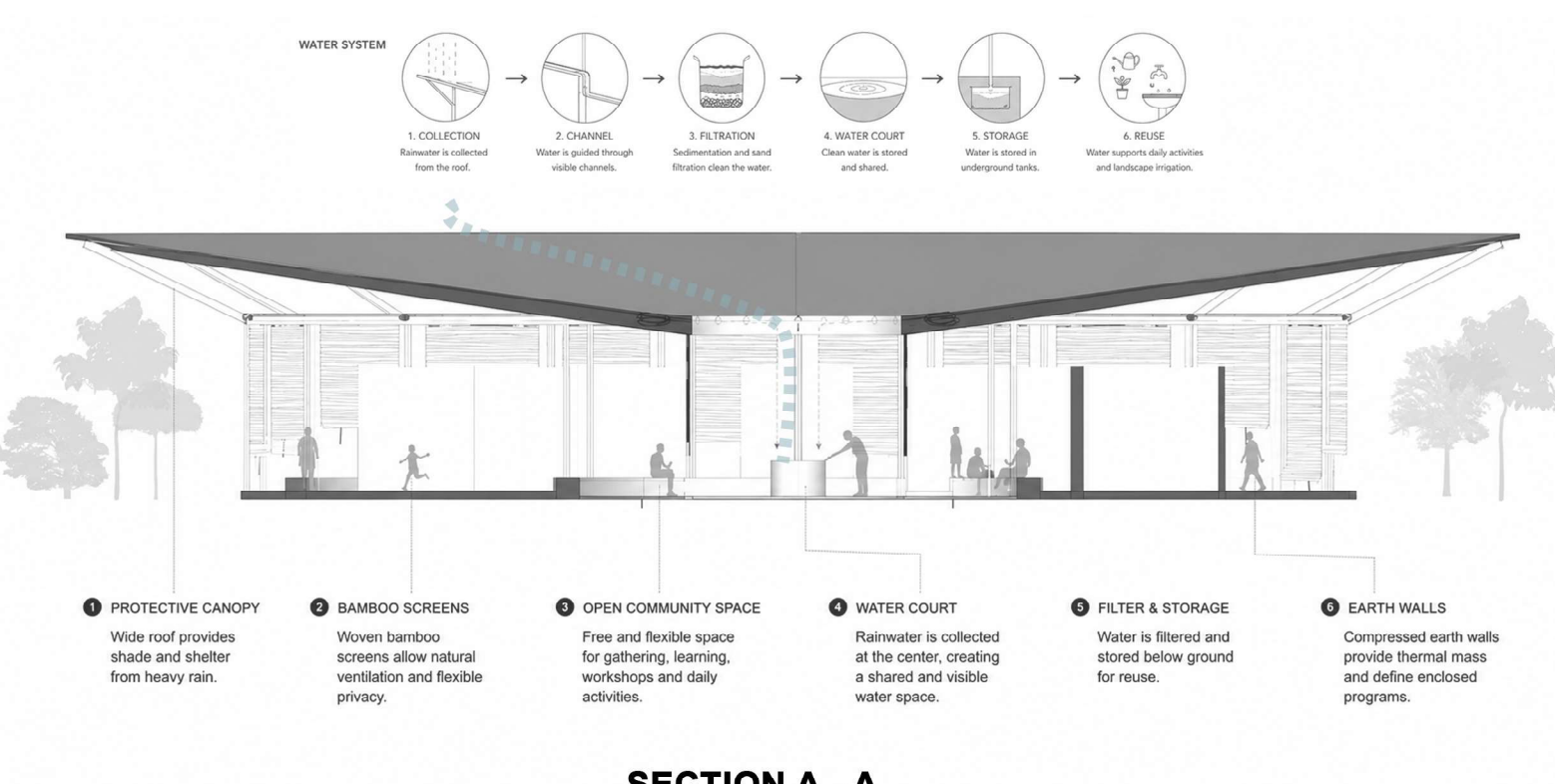


CONSTRUCTION PROCESS

1. Foundation
The project begins with reinforced concrete footings and ring beams, providing a stable base while minimizing intervention on the existing landscape.
2. Bamboo Roof Structure
A lightweight bamboo framework is assembled using local craftsmanship techniques. The radial structure forms a large canopy that spans over the community spaces and creates a shaded gathering environment.
3. Roof Installation
Corrugated metal sheets are fixed above the bamboo structure. The roof protects the spaces from heavy seasonal rainfall while collecting rainwater and directing it toward the central water court.
4. Earth Walls and Flexible Screens
Compressed laterite earth walls define the enclosed functions, while woven bamboo screens create adaptable boundaries that can open or close according to different community activities.
5. Rainwater Harvesting System
Rainwater is guided through visible channels, filtered through sedimentation and sand filtration systems, and stored in underground tanks for future community use.
6. Community Growth
The modular bamboo structure allows future expansion, repair and adaptation using local materials, skills and collective participation.



SOUTHEAST ELEVATION



SECTION A - A