

# CHAPEL OF LITTLE JESUS OF PRAGUE

Brazil - Campo Grande

KONC | KONVALINA | MARKOV | HOFRICHTER

supervisors MAIO | BOHATÝ

# Brazil - Campo Grande

Santa Casa de Campo Grande Charitable Association

Campo Grande, the capital of the Brazilian state of Mato Grosso do Sul, is a dynamic and rapidly developing metropolis located in the Central-West region of the country. The city is affectionately nicknamed "Cidade Morena" due to the characteristic reddish-brown color of its fertile soil. Furthermore, it serves as a crucial economic hub for the entire region, with an economy historically linked to agriculture and extensive livestock farming.

The city boasts a unique cultural mosaic, blending the traditions of indigenous people with the influences of immigrants from Japan, the Middle East, and neighboring Paraguay. For travelers, Campo Grande acts as a strategic gateway to world-renowned nature reserves, primarily the vast wetlands of the Pantanal and the famous ecotourism destination of Bonito. The urban area itself stands out for its numerous parks, wide tree-lined avenues, and an unusual harmony with the environment, making it perfectly common to spot macaws and other exotic birds flying freely right above its streets.



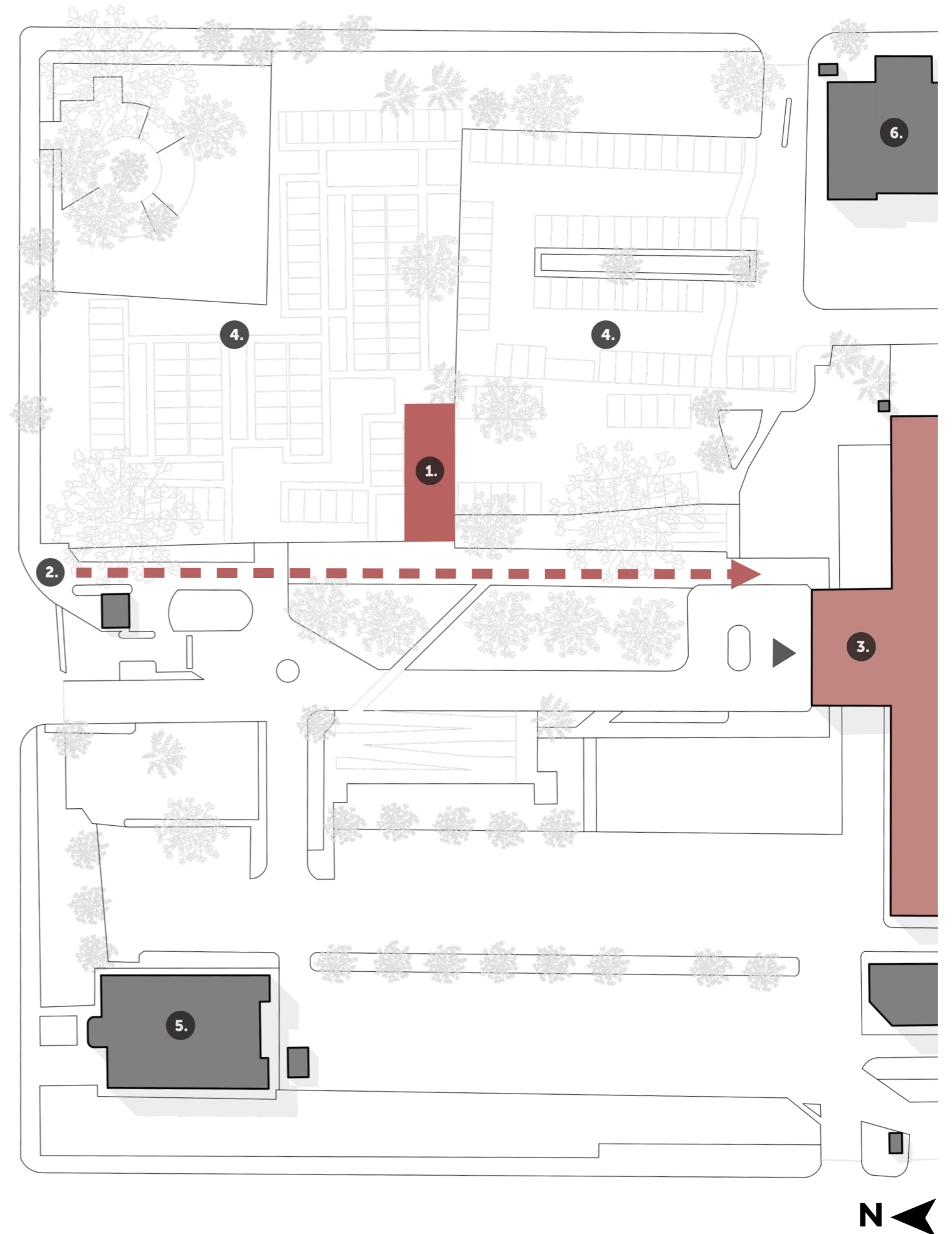
# Hospital

Santa Casa de Campo Grande Charitable Association

The Santa Casa Charitable Association is located in the city of Campo Grande, situated specifically along Eduardo Santos Pereira Street. The hospital's location is characterized by its strategic positioning and high visibility.

The facilities were designed to handle a significant daily flow of people, providing an easily accessible point for staff, patients, companions, and visitors who circulate through the area every day. The external layout features a prominent main hospital entrance, dedicated pedestrian access routes, and ample parking facilities to accommodate the large volume of arrivals. Additionally, the site encompasses open green spaces with lawns and mature trees, which are visible from both an aerial and frontal perspective of the hospital grounds.

- 1. Chapel of the Little Jesus of Prague
- 2. Pedestrian access
- 3. Hospital
- 4. Parking lot
- 5. Oncology
- 6. Administrative



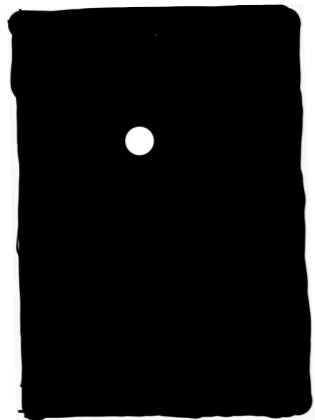
**CONCEPT**

# Concept

## Inside-out design

The design process originated from the most intimate human experience. The transcendental state of deep prayer.

With closed eyes, visual perception fades, giving way to heightened physical senses. Seeking a profound connection with nature as the path to supreme tranquility, the architecture is shaped to actively engage the body.



### 1. Void

Everything begins with a space for closed-eye prayer, where the absence of visual distraction amplifies inner tranquility and sensory perception.



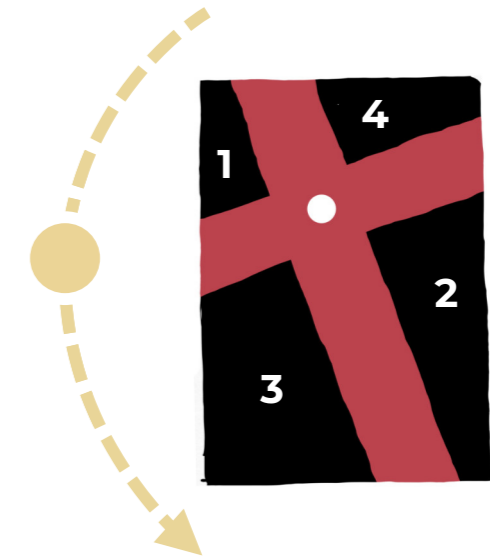
### 2. Narrow corridors

Active wind channels that accelerate natural airflow, creating a tactile breeze that physically touches the skin.



### 3. Nature

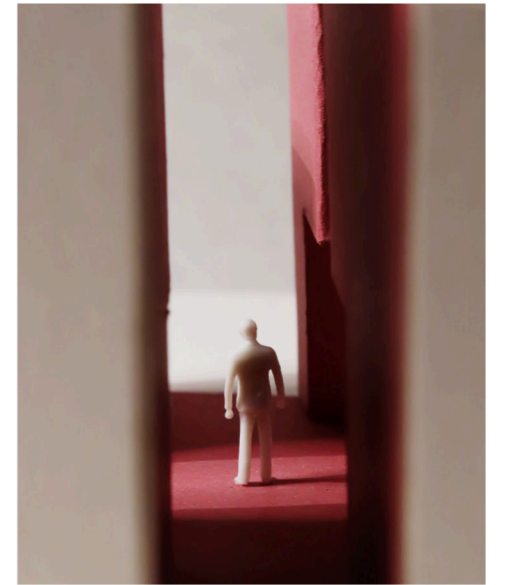
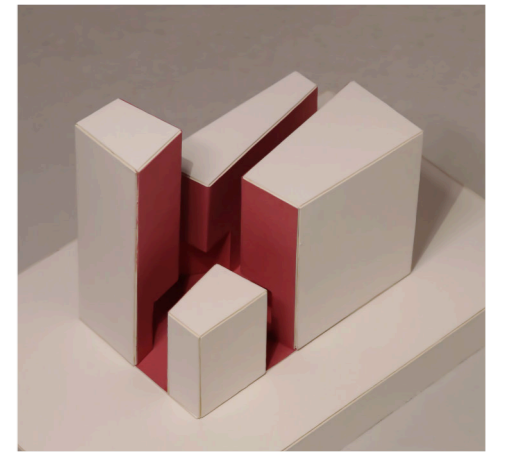
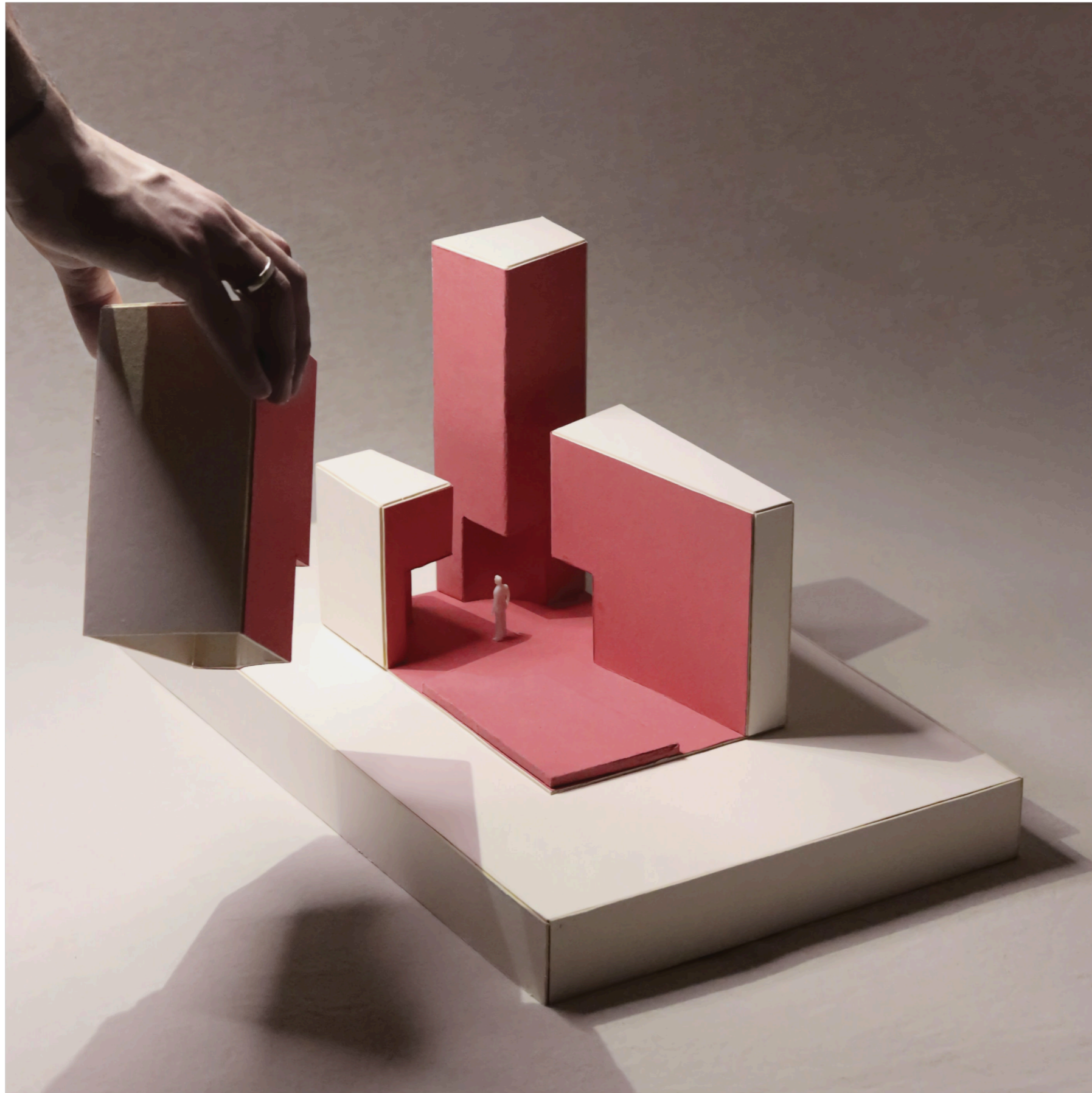
Strategic landscaping forms an intimate barrier, gently isolating the chapel to maximize its internal connection with nature.



### 4. Spatial experience

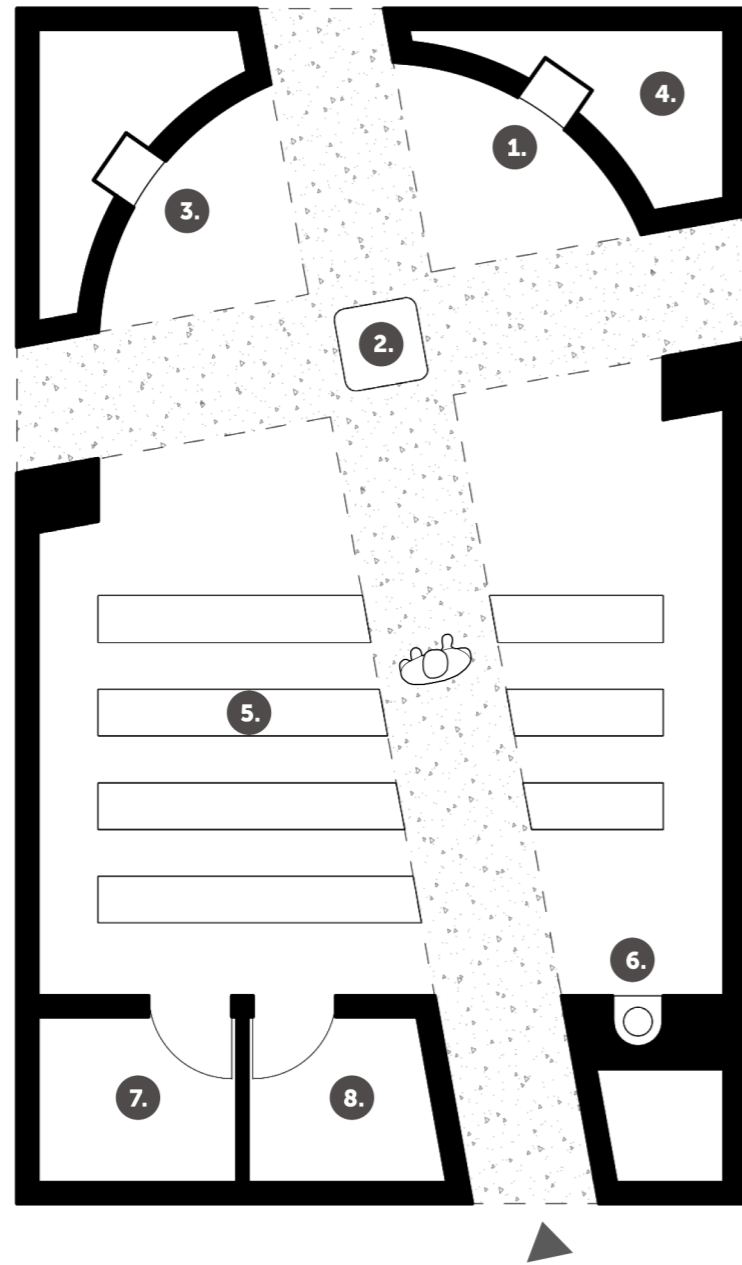
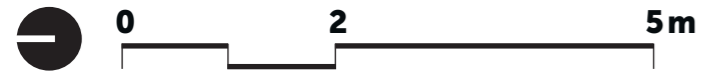
As the space divides, the different heights of the blocks create a dynamic play of light and shadow, elevating the physical space into a divine experience.

# Conceptual model



**ARCHITECTURE**

# Floor plan

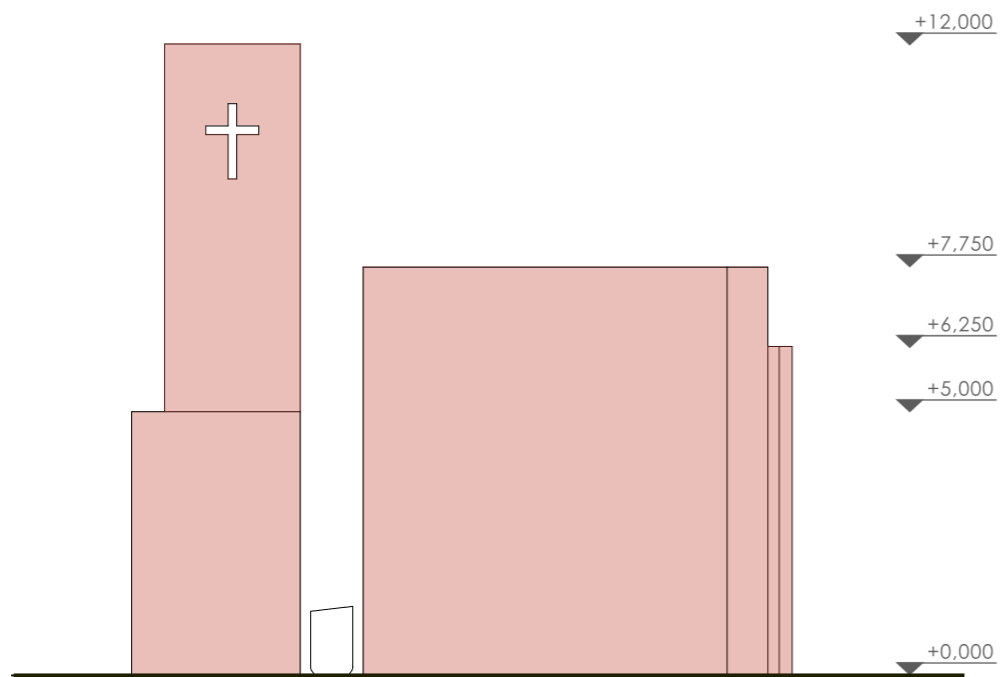
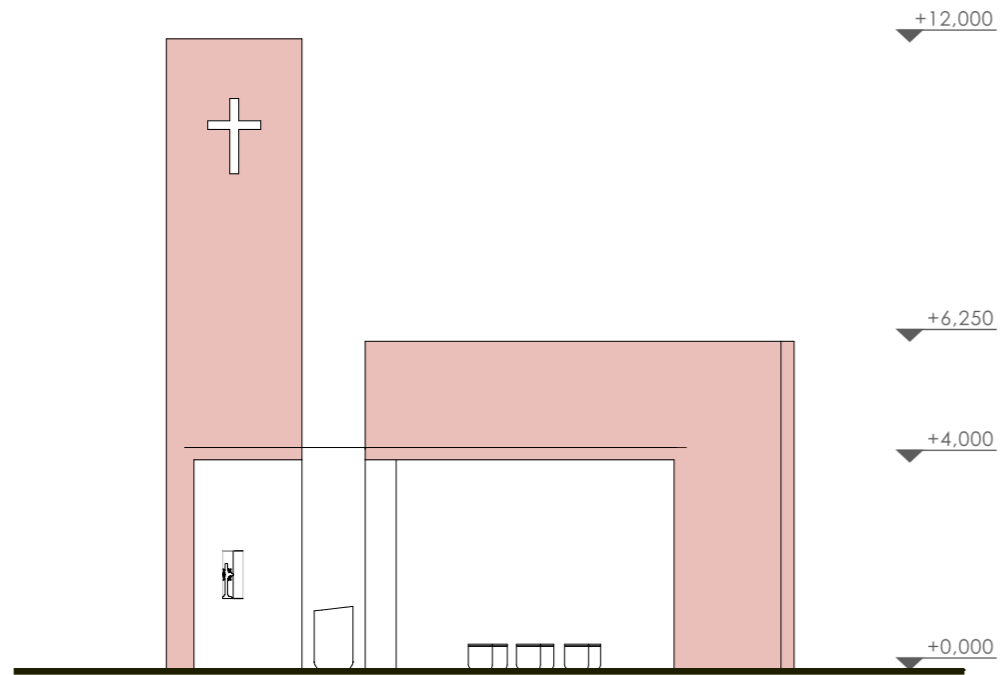


- 1. Little Jesus of Prague
- 2. Altar
- 3. Virgin Mary
- 4. Bell tower

- 5. Seats (25 per person)
- 6. Holy water font
- 7. Sacristy
- 8. Monstrance

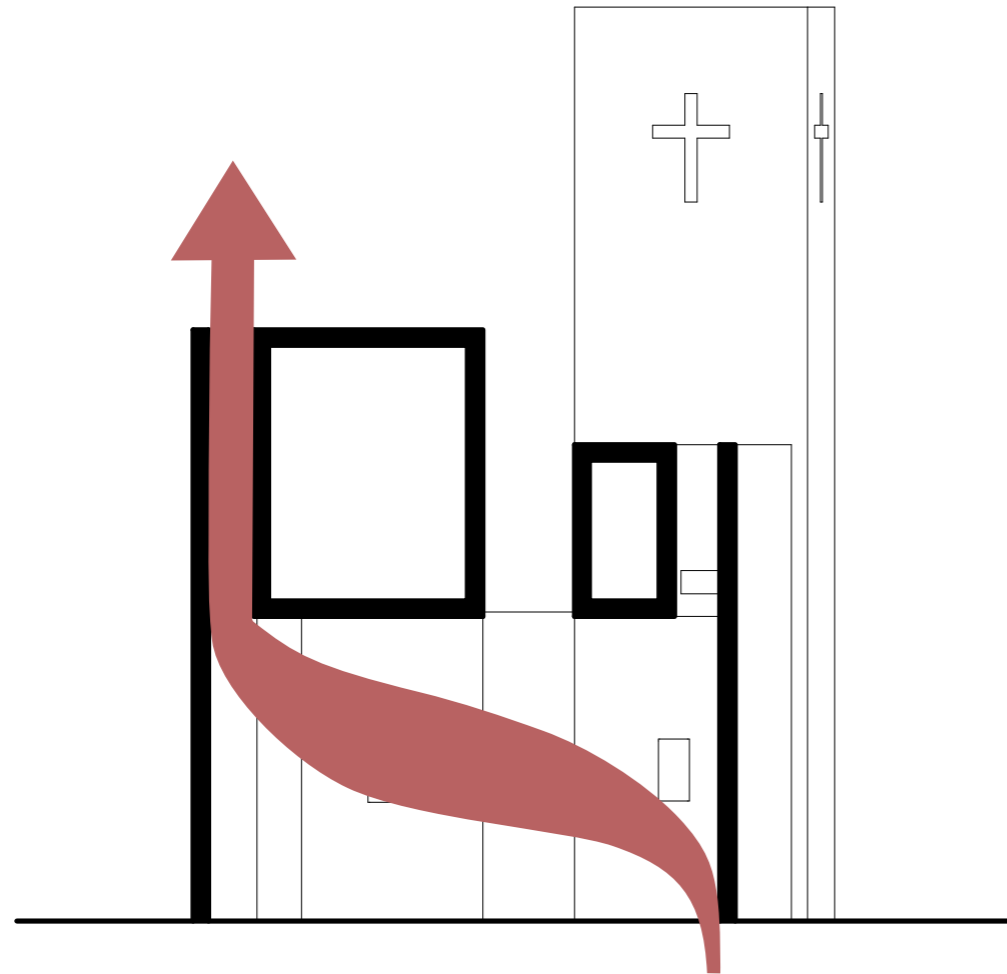


# Sectional elevations



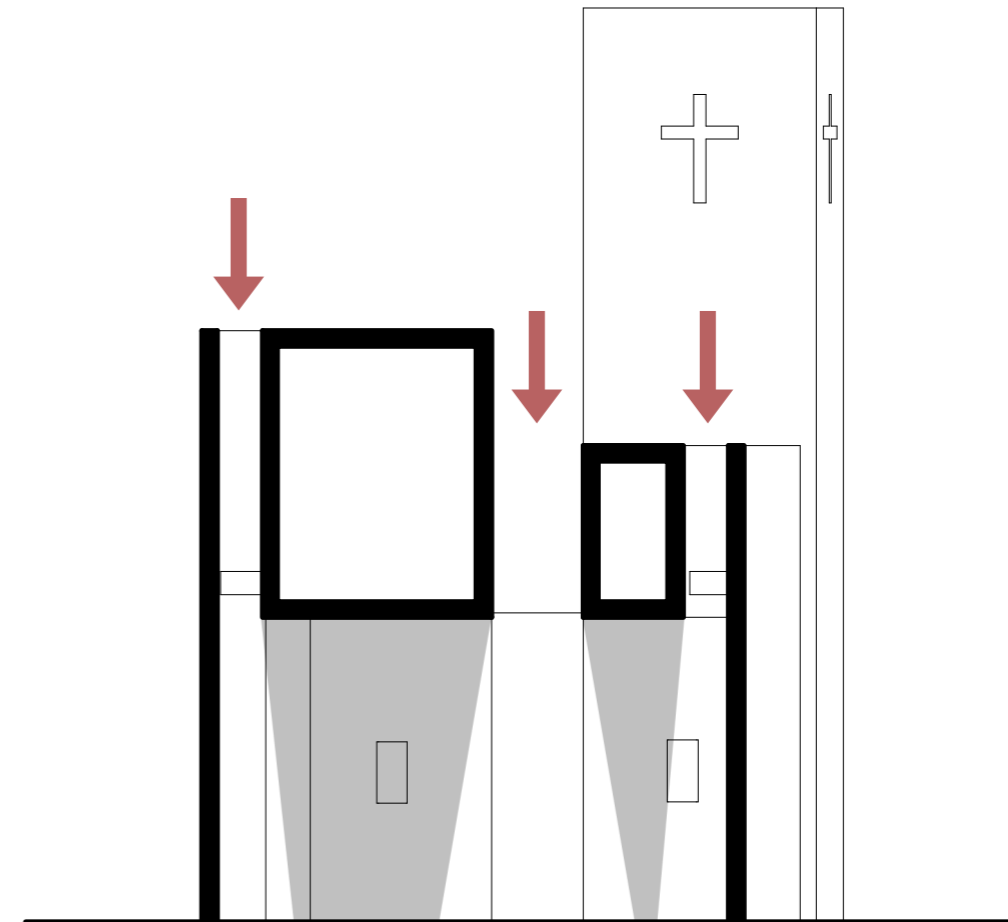


# Functional design elements



## Airflow

The ventilation of the chapel is ensured through the stack effect, which is achieved by the intake of pre-cooled air through an underground tubular heat exchanger and the exhaust of hot air at the highest point of the chapel. Therefore, the entire system is energy-efficient and operationally undemanding.



## Natural lighting diagram

The lighting concept is based on the difference in height of the volumes, creating reflections that transform natural light into soft and diffuse interior lighting. The architectural highlight is the intermediate cross glazing, which projects a clearly defined pattern of light onto the floor.

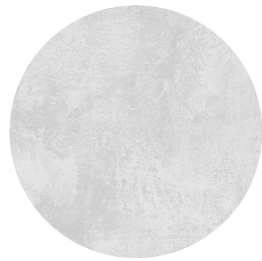


# Materiality



## Reinforced concrete

The main structural element is reinforced concrete, providing fundamental strength, stability, and durability. In addition to its structural capabilities, its high thermal mass offers a natural cooling effect in the hot tropical climate.



## Lime plaster

The internal volumes are defined by lime plaster, a material deeply rooted in the architectural traditions of the region.



## Quartzite

In this project, Brazilian quartzite acts as a symbolic anchor to the site, bringing a fragment of Brazil's authentic natural heritage directly into the heart of the chapel.



## Terrazzo

The material solution for the floor utilizes cross-shaped cast terrazzo, which clearly articulates the interface between the different volumes. This element responds directly to the identical geometry of the glass ceiling above it, vertically connecting the space and intensifying the effect of the passing light.



## Structured plaster

The vertically ribbed texture creates a dynamic play of light and shadow throughout the day, while the bold color evokes a profound sense of spiritual intensity and warmth.





