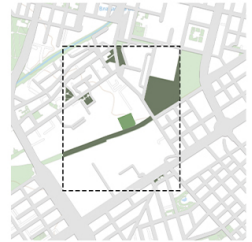
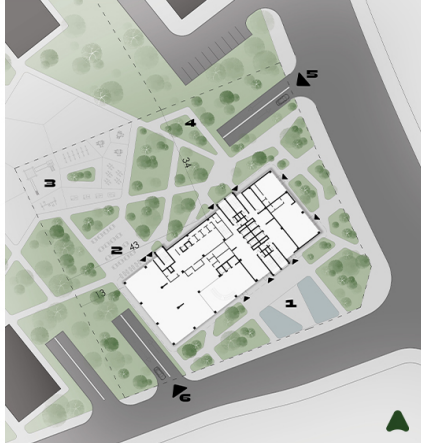




DIPLOMA PROJECT | OGNKYANA GABROVSKA

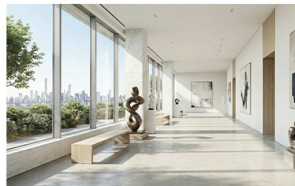
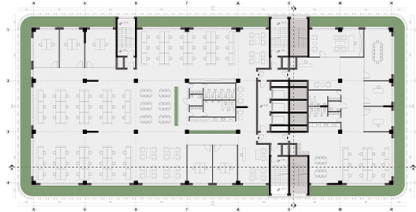
The building offers high-end residences designed for the modern urban dweller seeking a balance between an active lifestyle, comfort, and a connection with nature. The concept combines spacious, functional homes with landscaped terraces, an exclusive wellness area, underground parking, and diverse public amenities that enrich the residents' daily lives. By incorporating an art gallery, a gourmet restaurant, and spaces for cultural events, the building becomes more than just a place to live - it serves as a vibrant urban hub that fosters community and contributes to the evolving identity of the neighborhood.





DIPLOMA PROJECT | OGNYANA GABROVSKA

The building is situated in the southeastern corner of the plot to ensure maximum privacy for the courtyard, shielding it from boulevard noise and to maintain distance from the neighboring residential lot. The structure is rotated 15° relative to the property boundaries, creating a plaza space in front of the main entrance. This orientation provides direct views from the residences toward Vitoshka mountain to the southwest and toward the capital's skyline to the northeast. The courtyard features a terrace for the outdoor restaurant, water features, an open-air exhibition zone, relaxation areas and a kids playground. Parking is entirely underground across three levels, featuring separate access points for the residential and public sections.





DIPLOMA PROJECT | OGNJANA GABROVSKA

The massing follows a classic composition of a high-rise and a low-rise volume, unified by a sheer second skin from perforated metal panels. This "envelope" wraps around the structure, providing sun and wind protection while also giving the building a unique visual identity that stands out in the urban skyline. The cladding opens up to the southwest to provide fully unobstructed mountain views from the terraces. Each floor is surrounded by lush greenery thus creating the modern equivalent of a house with a yard, but located just minutes from the city center. The building reaches a height of 80m, which is well under the maximum limits permitted by the local regulations and the plot's potential. This ensures that it remains in harmony with the developing urban infrastructure and the specific needs of the emerging neighborhood.

