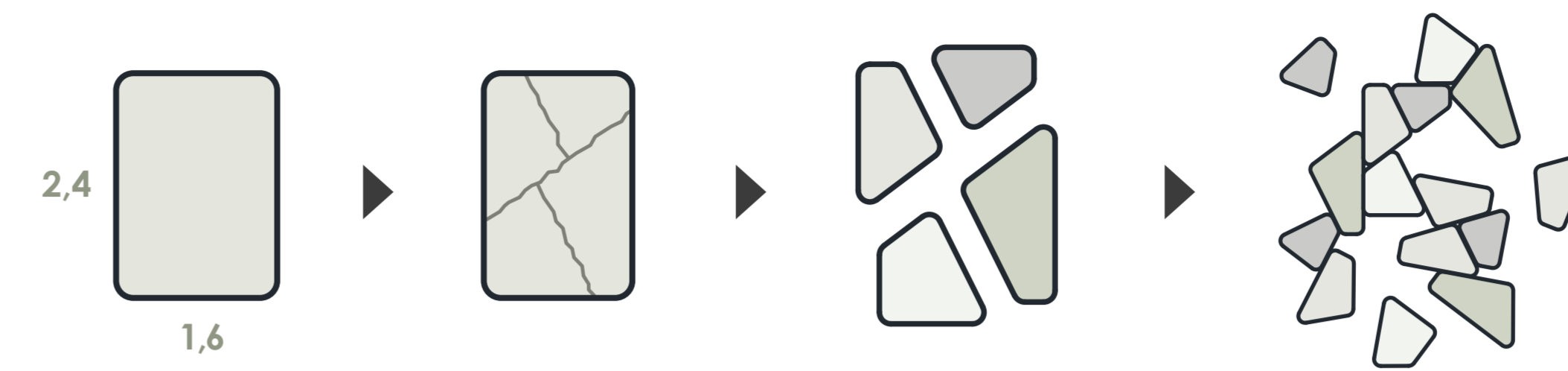
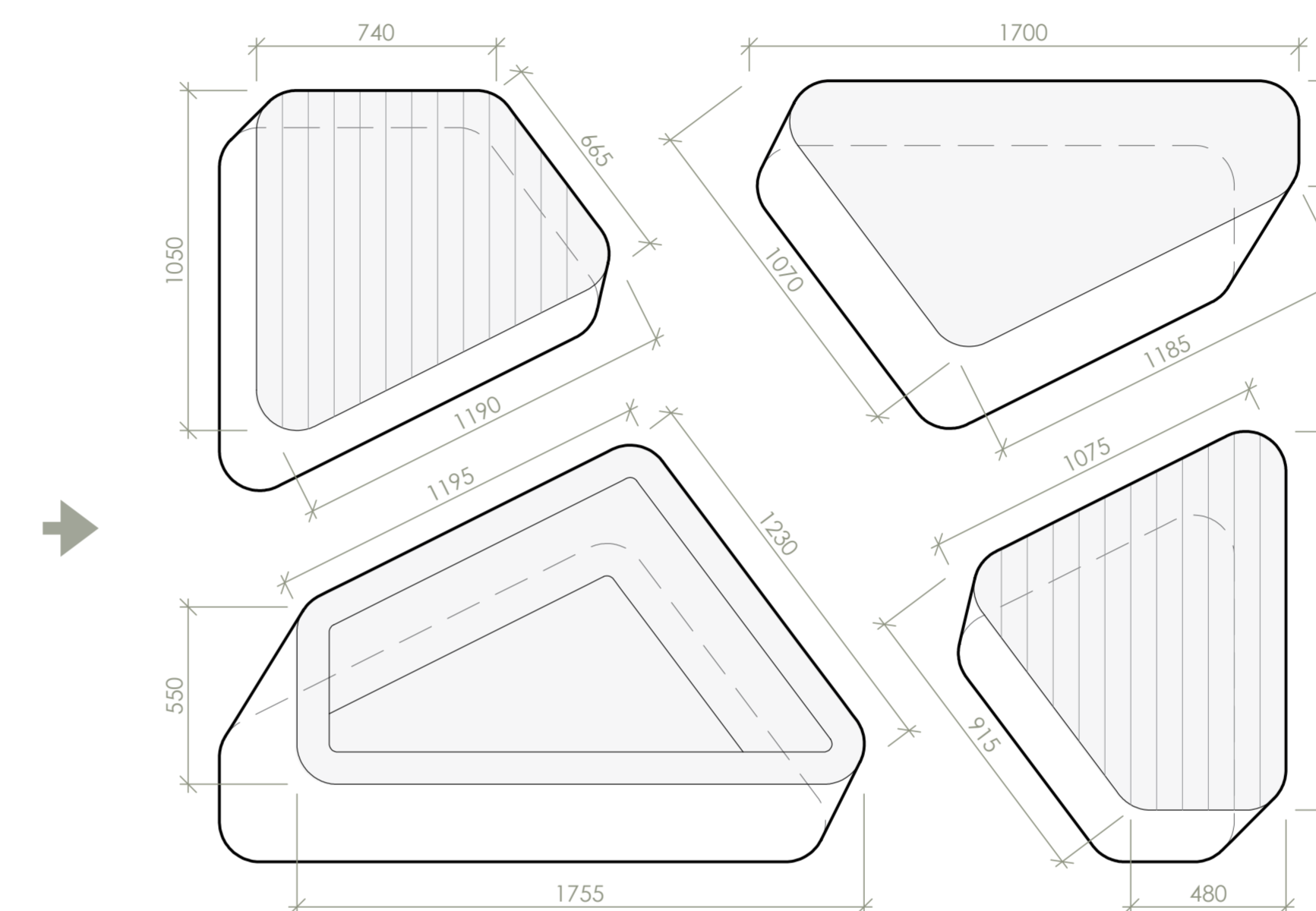




## Concept



## Floorplan



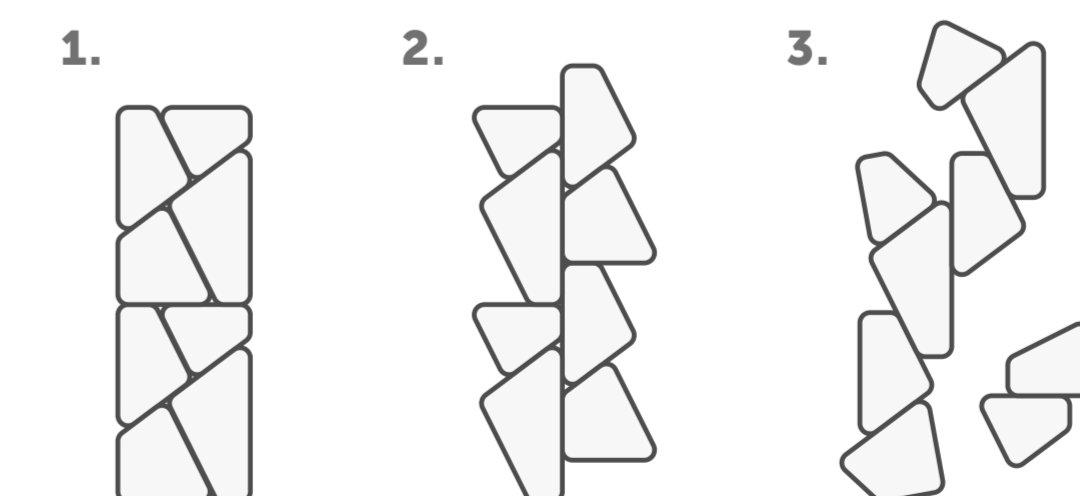
## Color scheme

Beyond the natural shade of concrete, the design considers mass pigmentation. The chosen palette of green and gray tones was selected to sensitively reflect the visual identity of the faculty's forecourts.



## Layout options

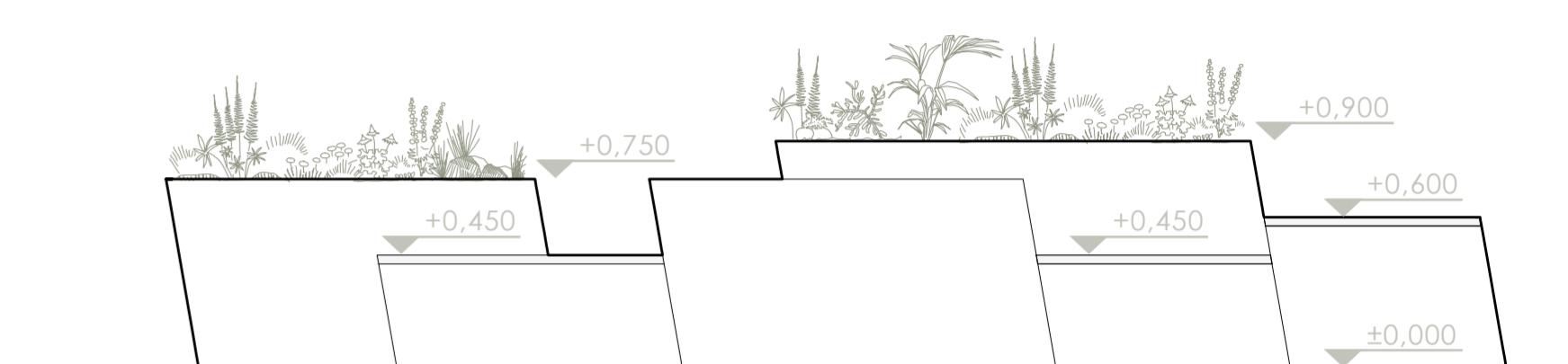
Thanks to identical wall slopes, segments fit together like a puzzle, allowing for the creation of compact islands or freestanding solitaires. This versatility allows the system to respond flexibly to the site's character, thereby regulating the level of privacy or openness.



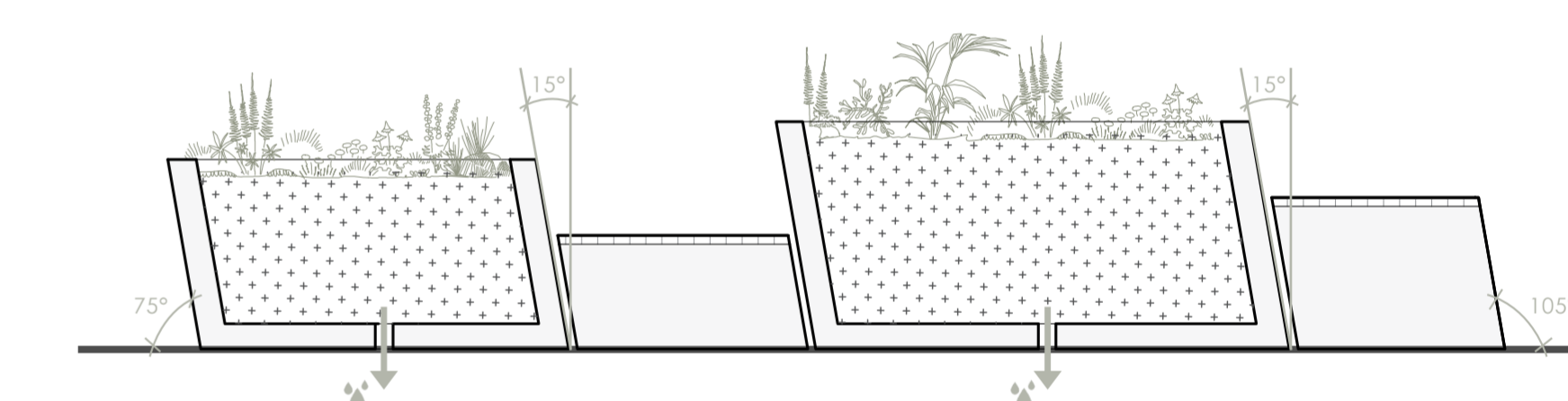
## Description

Agora Tectonica is not just furniture; it is landscaping on a small scale. Inspired by the movement of tectonic plates, it allows concrete blocks to emerge from the level of the sidewalk, which naturally become a refuge in the busy flow of the campus. In this dialogue of materials, the uncompromising strength of concrete blends with the warm softness of wood and vibrant greenery. The result is a space that invites one not only to sit but to pause, take a breath, and share thoughts. In this way, the furniture transcends its simple utilitarian function and becomes a quiet, stable point in the otherwise changeable and hectic life of the faculty.

## Elevation

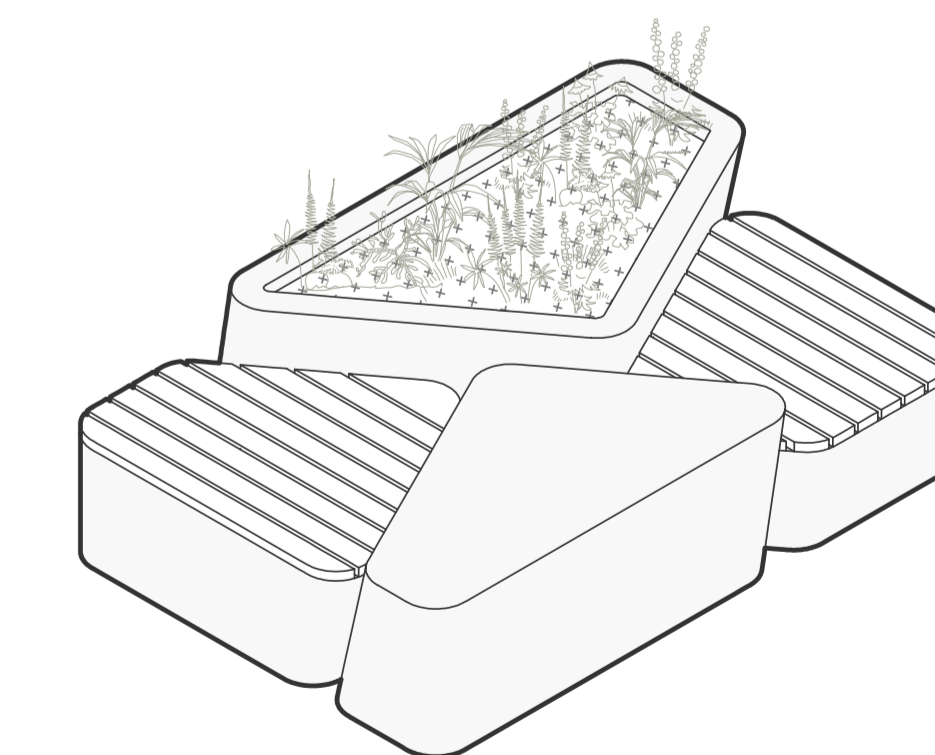


## Section



## Base module 1,6x2,4m

The basic assembly consists of four volumetrically distinct segments at different height levels. The mutual connection of the elements is ensured by edges beveled at a 15° angle, which simultaneously create ergonomic back support. The default configuration combines a large-volume planter for vegetation, a raised surface, and two seating modules with wooden cladding. However, the system offers full variability – the functional purpose of each part (planter, table, bench) can be freely modified.



# AGORA TECTONICA

bc. Adam Konc

CTU IN PRAGUE - FACULTY OF CIVIL ENGINEERING

STUDY PROGRAM: A+S