

University of Pristina

Faculty of Architecture



Arsenal Memory Park

“THE SILENCE THAT SPEAKS”

Students:

Adonesa Rama

Erleta Sahiti

Liburna Spahiu

Professor: Vlora Navakazi

Assistant: Miradie Ukshini

Contents:

Introduction	4
1.ARSENAL MEMORY PARK	5
1.1.Location Analysis	5
1.2.Urban Analysis	6
1.3.Macroanalysis	6
1.4. Environmental Factors – Sun, Wind, and Noise	7
Fig. 5.Environmental Factors – Sun, Wind, and Noise(<i>from authors A.R, E.S, L.S</i>).....	7
1.5. SWOT Analysis – Description	8
1.6. General Concept – Memory Park at Arsenal, Argentina (1976–1978).....	9
2.Art Gallery	10
2.1.The semi-basement floor	11
2.3.Section.....	12
2.4.Elevations of art gallery	12
2.5.Visualisation.....	13
3.Pavilions	13
3.1.The pavilion of turture.....	14
3.2. The Pavilion of the Disappeared.....	14
4.Memorial Park.....	15
5. Commercial Spaces – Integrated	15

Table of pictures:

Fig. 1.Location Analysis(from authors A.R, E.S, L.S)	5
Fig. 2.Location (InspireliAwards,2025).....	5
Fig. 3. Urban Analysis(from authors A.R, E.S, L.S)	6
Fig. 4.Macroanalysis(from authors A.R, E.S, L.S)	6
Fig. 5.Environmental Factors – Sun, Wind, and Noise(<i>from authors A.R, E.S, L.S</i>)	7
Fig. 6.SWOT Analysis (from authors A.R, E.S, L.S).....	8
Fig. 7.Concept of Art Gallery (from authors A.R, E.S, L.S)	10
Fig. 8. Semi basement floor (from authors A.R, E.S, L.S).....	11
Fig. 9.Ground floor gallery. (from authors A.R, E.S, L.S)	11
Fig.10.Sections (from authors A.R, E.S, L.S)	12
Fig. 11.Visualisations (from authors A.R, E.S, L.S).....	13
Fig.12.Concept of pavilions (from authors A.R, E.S, L.S)	13
Fig.13.Pavilion of turture(from authors A.R, E.S, L.S).....	14
Fig.14.Pavilion of Disappeared (from authors A.R, E.S, L.S)	14
Fig.15.Memorial Park (from authors A.R, E.S, L.S)	15

Introduction

The Faculty of Architecture at the University of Prishtina has decided to participate in this international competition, viewing it as an important academic and professional opportunity to contribute creative, visionary, and sustainable ideas in the fields of urbanism, architecture, and landscape design. This engagement reflects our efforts to showcase the institution's capacities on the international stage while offering students direct, practical experience in developing concepts and projects at various scales.

The competition includes three main conceptual development scales:

1. Urban Scale – Site Urbanization

This phase involves the conceptual urban design of the site, including basic infrastructure (road networks and access), land-use planning, public spaces, and key urban landmarks. The goal is to create a functional and harmonious urban structure integrated with the wider context.

2. Urban Sector Scale – Park Unit

This phase focuses on the landscape design of the park and the interpretation center area. It aims to create high-quality, green, attractive public spaces that support social, recreational, and cultural activities while giving the area a distinct identity.

3. Architectural Scale – Interpretation Center

This phase develops the preliminary architectural design of the Interpretation Center as a multifunctional facility. Possible components include an exhibition pavilion, memorial square, art gallery, café and commercial spaces, geodesic dome, conference center, workshop spaces, amphitheater, parking, and other supporting areas — totaling approximately 40,000 m².

1.2. Urban Analysis

From an urbanistic standpoint, the Arsenal Memory Park must function as a strategic open space that reconnects the site with the surrounding metropolitan fabric of San Miguel de Tucumán.

The design should enhance accessibility, create new pedestrian and green corridors, and integrate the park into existing mobility networks.

The project should also transform a formerly inaccessible and traumatic site into a civic landmark, using landscape design to structure movement, define public gathering areas, and establish visual axes that relate to the site's historical traces. By balancing open communal spaces with zones for quiet reflection, the park should become a catalyst for social integration, environmental improvement, and sustainable urban development in the area.

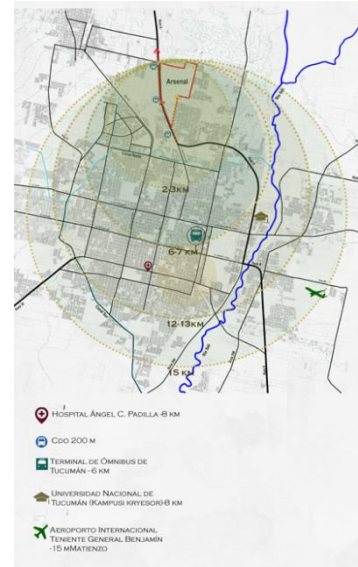


Fig. 3. Urban Analysis (from authors A.R, E.S, L.S)

1.3. Macroanalysis

At the metropolitan scale, the Arsenal Memory Park acts as a major urban connector, integrating the site into San Miguel de Tucumán's wider network of mobility, green infrastructure, and public spaces. The project strengthens ecological continuity, improves regional accessibility, and creates a new civic landmark that links surrounding neighborhoods.

By transforming a formerly closed site into an open metropolitan asset, the park can stimulate urban regeneration, reinforce social cohesion, and contribute to a broader narrative that combines collective memory with contemporary urban development.

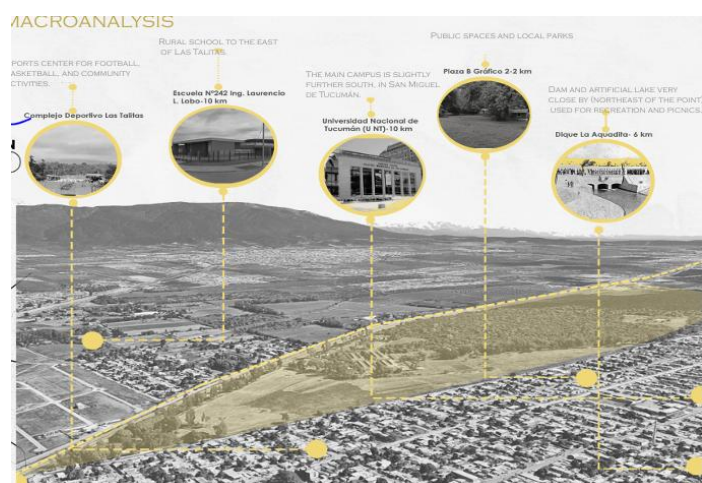


Fig. 4. Macroanalysis (from authors A.R, E.S, L.S)

1.4. Environmental Factors – Sun, Wind, and Noise

The site's design should consider solar orientation to maximize daylight in public spaces while providing shaded areas for comfort during peak sun exposure. Prevailing winds can be used to enhance natural ventilation across open areas, while windbreaks—such as tree lines or topographic elements—can protect more contemplative zones. Noise from adjacent main roads requires buffering strategies like dense vegetation belts, earthen berms, or acoustic screens. Residential streets, although quieter, may still generate background noise, so transitional landscape zones can help create a calmer sound environment within the memorial and reflective areas of the park.

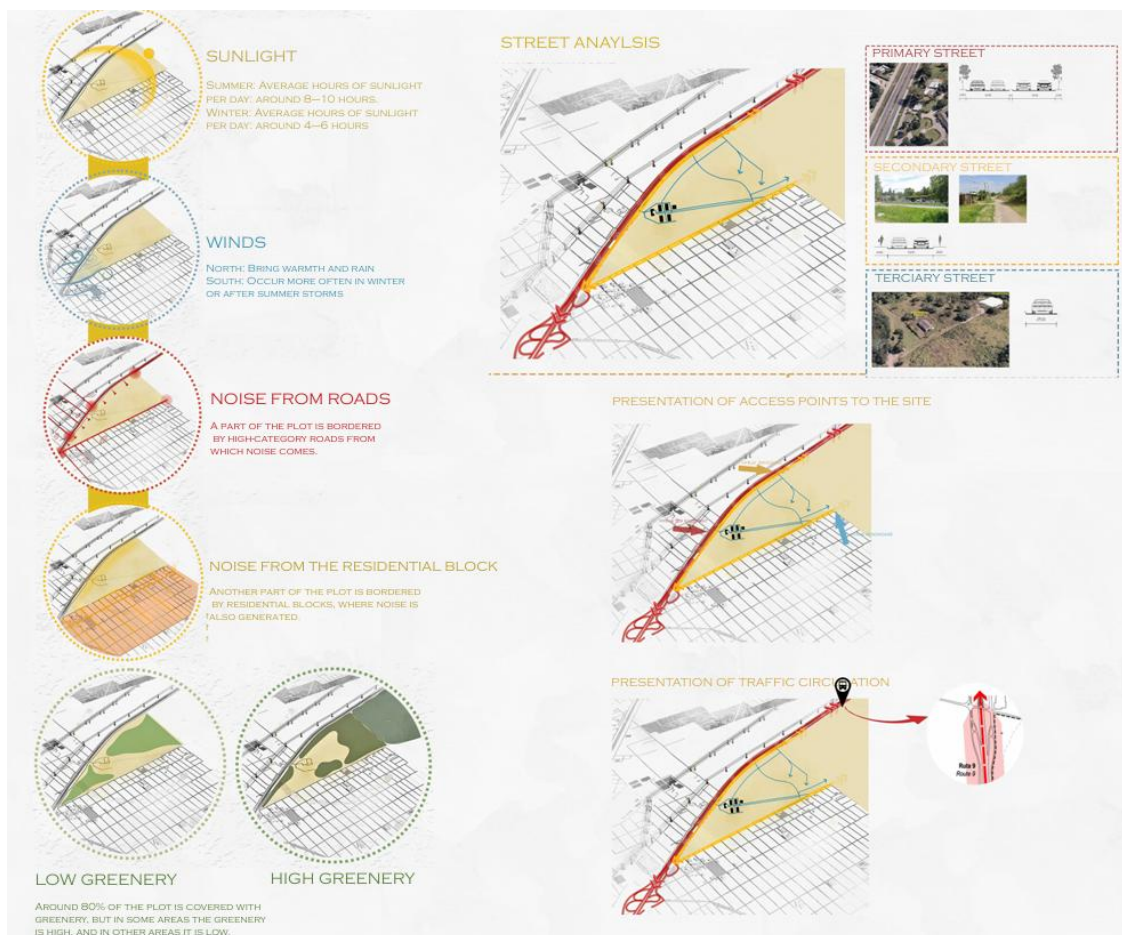


Fig. 5. Environmental Factors – Sun, Wind, and Noise (from authors A.R, E.S, L.S)

1.5. SWOT Analysis – Description

The image presents a structured SWOT analysis for the *Arsenal Memory Park* project. The four quadrants highlight the project's **Strengths**, **Weaknesses**, **Opportunities**, and **Threats**, visually arranged around a central circular graphic.

- **Strengths** emphasize good site accessibility, proximity to main roads, suitable terrain, and the strong symbolic value of the location.
- **Weaknesses** focus on the lack of nearby services, poorly organized internal roads, insufficient lighting, and design limitations due to the memorial nature of the site.
- **Opportunities** point to the potential for urban transformation, cultural development, tourism, and collaboration with institutions and the local community.
- **Threats** address risks such as over-development, political sensitivity, loss of memorial identity, and long-term funding challenges.

On the right side, the image includes a **program breakdown**:

1. **Museum** (administration, historical exhibition, memorial art gallery, immersive audiovisual room)
2. **Memorial Park** (memory square)
3. **Urban Solutions** (pedestrian and bicycle paths, road regulation, public/social spaces)

Below, a **pie chart** visually represents the project emphasis:

- 70% Memorial Park
- 20% Architectural Design
- 10% Infrastructure Solutions

At the bottom, the **Concept – Main Idea** is titled *“The Silence That Speaks.”* It describes the memorial as a place where history and pain are not hidden but revealed through silence, reflection, and a design that gently integrates nature with memory.

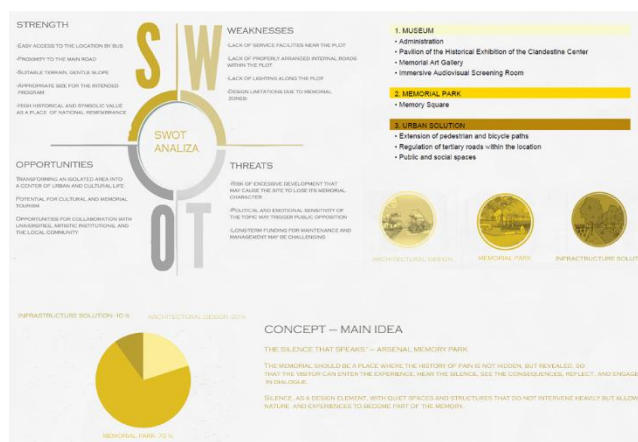


Fig. 6. SWOT Analysis (from authors A.R, E.S, L.S)

1.6. General Concept – Memory Park at Arsenal, Argentina (1976–1978)

The Memory Park at Arsenal is conceived as a spatial translation of fragmented history. The project originates from a **single architectural mass**, representing the weight of a silenced and oppressive past. This mass impacts the ground, symbolizing violence, rupture, and historical trauma.

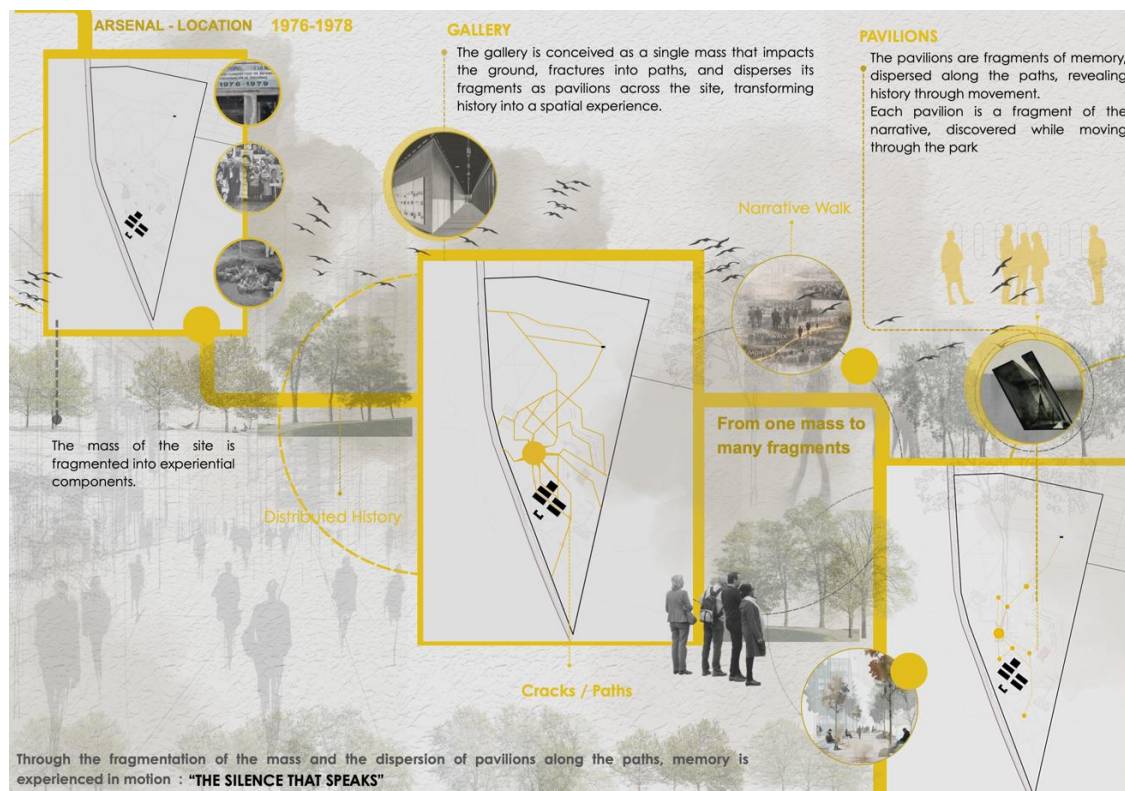


Figure 7 General Concept - Idea

Through this impact, the mass **fractures**, generating **cracks that become paths**. These paths guide visitors through the park, transforming the act of walking into a **Narrative Walk** a journey where memory is not presented as a linear story, but as an experience discovered in motion.

As the mass breaks apart, its fragments disperse across the site in the form of **pavilions**. Each pavilion acts as a **fragment of memory**, carrying a specific theme related to the history of the Arsenal during the Dirty War (1976–1978). Rather than concentrating history in one monument, the project allows it to unfold gradually, through movement, pauses, and encounters.

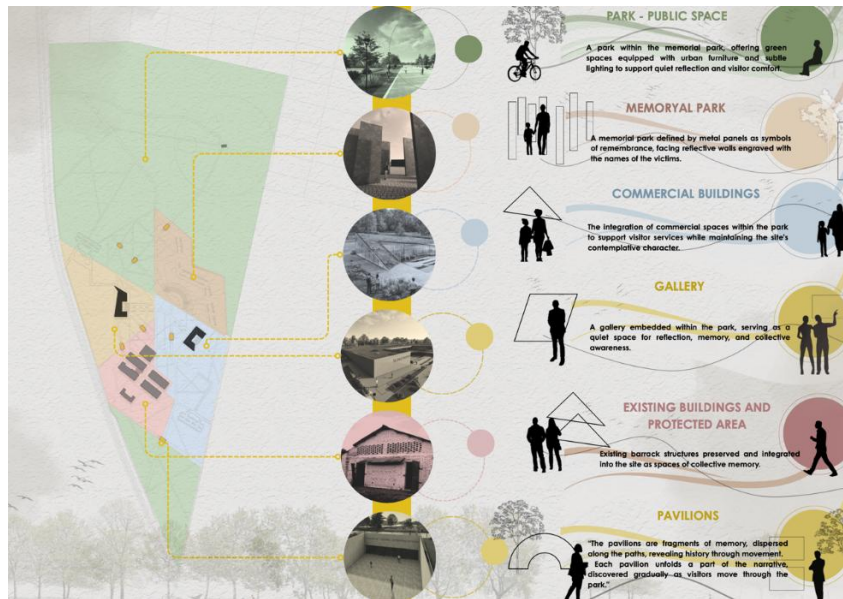


Figure 8 Description of spaces and content

The visitor moves from one mass to many fragments, experiencing history as something incomplete, broken, and dispersed, mirroring the reality of erased voices and interrupted lives. The park itself becomes an inhabited history, where the ground, the paths, and the pavilions together construct a silent yet powerful narrative.

This fragmentation does not aim to destroy meaning, but to activate memory through space. Silence becomes the primary medium of expression a silence that speaks, allowing reflection, contemplation, and personal interpretation.

The project transforms memory into space, and space into experience.

2. Art Gallery

The Art Gallery is a dedicated space designed to showcase exhibitions that highlight the historical and cultural significance of the site. It provides a calm and contemplative environment where visitors can engage with curated artworks and displays that reflect the memory and stories connected to the Arsenal Memory Park. The gallery enhances the educational and emotional experience, supporting the overall mission of remembrance and reflection.

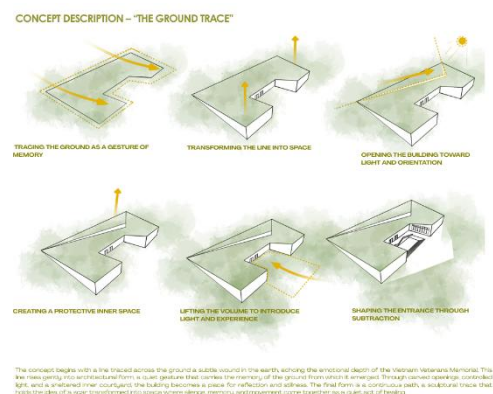


Fig. 9. Concept of Art Gallery (from authors A.R, E.S, L.S)

2.1. The semi-basement floor

The basement level is primarily designed to accommodate essential support and service areas for the museum. It includes spaces such as general storage, wardrobe, archives, and specialized storage rooms for removed exhibits, sculptures, books, and restaurant supplies, ensuring proper conservation and logistics. The layout also features administrative zones with vertical communication cores, security, ticketing, and reception areas, as well as functional rooms like the unloading and receiving supporting the museum's public functions above while maintaining smooth circulation and controlled access throughout the facility

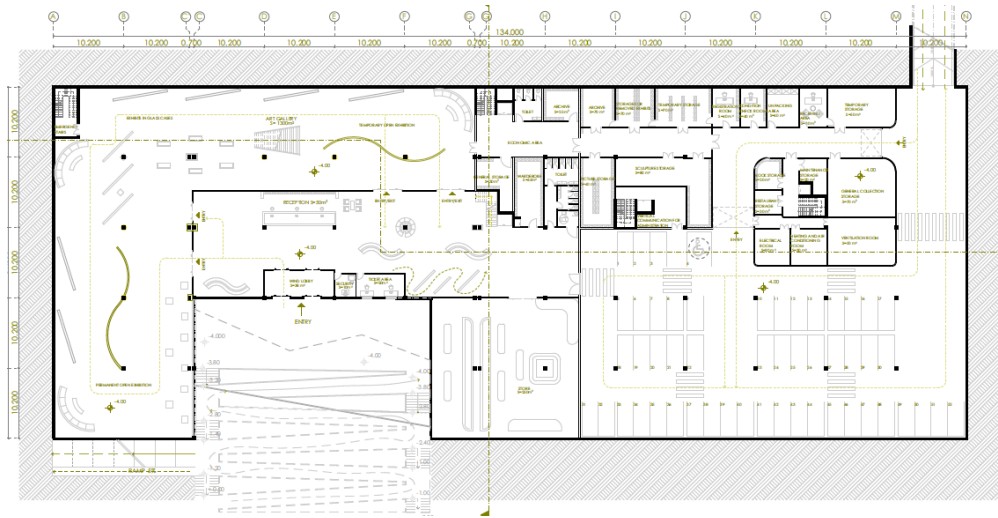


Fig. 10. Semi basement floor (from authors A.R, E.S, L.S)

2.2. Ground floor

The ground floor is organized to serve as the main public and administrative hub of the facility. It features a spacious entrance lobby and foyer that guide visitors into the large Art Gallery, designed for both permanent and temporary exhibitions. Adjacent spaces include an audiovisual room and sound facilities to support immersive experiences. The plan also incorporates administrative offices, a reading area, a bookshop, and a restaurant with kitchen facilities, ensuring comprehensive visitor services.

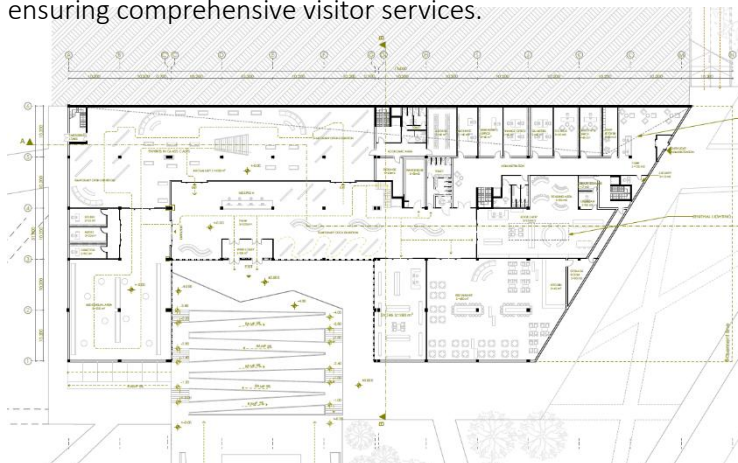
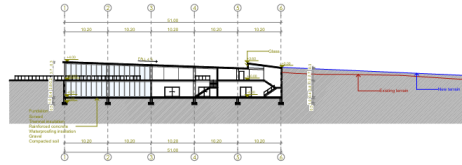


Fig. 11. Ground floor gallery. (from authors A.R, E.S, L.S)

2.3. Section

These two sections of the art gallery (A-A and B-B) illustrate the spatial and structural organization of the building along its length and width. They show the floor levels, roof form, supporting columns, walls, stairs, and functional areas such as the ART GALLERY spaces. The drawings also present the existing and proposed terrain lines, the foundations, soil layers, insulation, and waterproofing systems, as well as the main horizontal and vertical dimensions that define the architectural form and the building's integration with the sloped site.

SECTION B-B



SECTION A-A

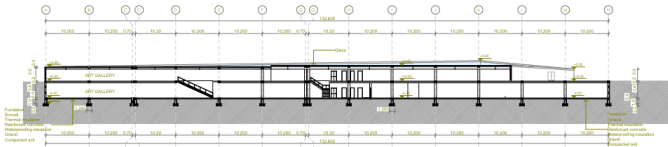


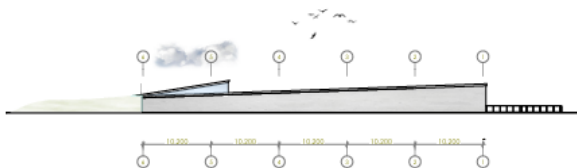
Fig.12. Sections (from authors A.R, E.S, L.S)

2.4. Elevations of art gallery

These elevations present the visual character and architectural expression of the art gallery from the north and south sides. The North Elevation highlights the building's elongated, transparent façade with large vertical openings that allow natural light to enter the gallery spaces, as well as a gently sloping roof that follows the site's natural topography. In contrast, the South Elevation showcases a more solid and minimal exterior, emphasizing the building's clean horizontal lines and its subtle integration into the landscape. Together, the elevations illustrate how the gallery balances openness, lightness, and simplicity while harmonizing with its surrounding environment.



NORTH ELEVATION



SOUTH ELEVATION

2.5. Visualisation



Fig. 13. Visualisations (from authors A.R, E.S, L.S)

3. Pavilions

The pavilions are designed as light, open structures that complement the main gallery while creating inviting spaces for visitors to gather, explore, and experience art in a more intimate setting. Their simple forms, transparent surfaces, and careful placement within the landscape allow them to blend naturally with the environment, offering both functional exhibition areas and visually appealing architectural elements that enhance the overall cultural experience.

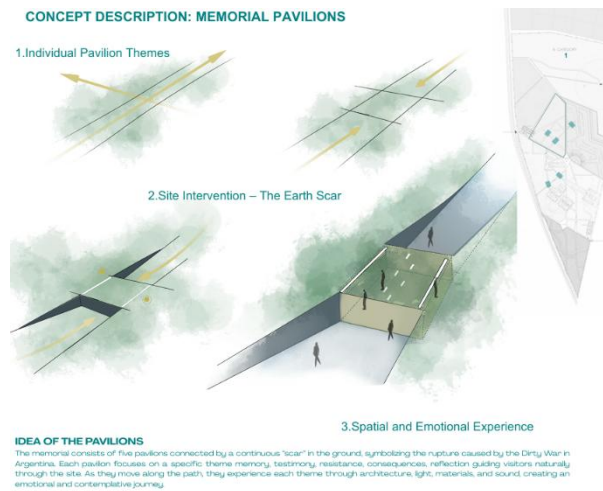


Fig. 14. Concept of pavilions (from authors A.R, E.S, L.S)

3.1. The pavilion of torture

The pavilion dedicated to torture and detention centers is designed as an emotional and immersive space that guides visitors through a narrow, tunnel-like entrance, symbolizing fear and confinement. Its minimal and enclosed architecture enhances

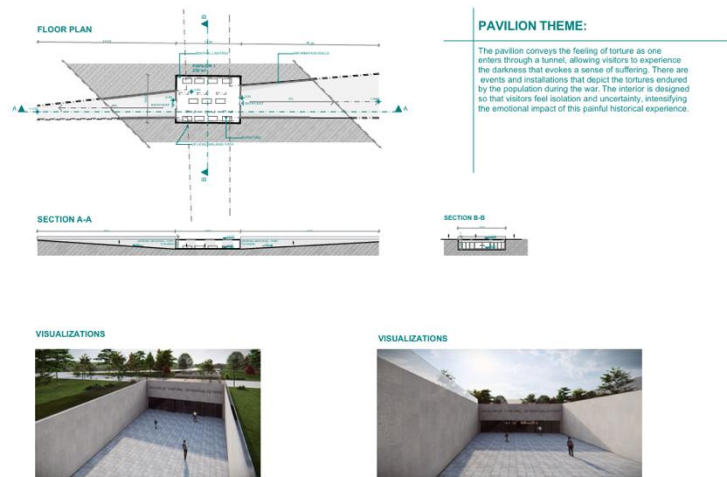


Fig.15. Pavilion of torture (from authors A.R, E.S, L.S)

allowing the exhibits inside—

focused on the suffering endured during the war—to have a powerful and reflective impact. Through its spatial composition and atmosphere, the pavilion encourages visitors to confront painful historical realities with sensitivity and depth.

3.2. The Pavilion of the Disappeared

The Pavilion of the Disappeared serves as a solemn and reflective space dedicated to individuals who went missing in the surrounding area. Designed to honor their memory, the pavilion presents visitors with information about each person, including photographs, last known locations, and other important details related

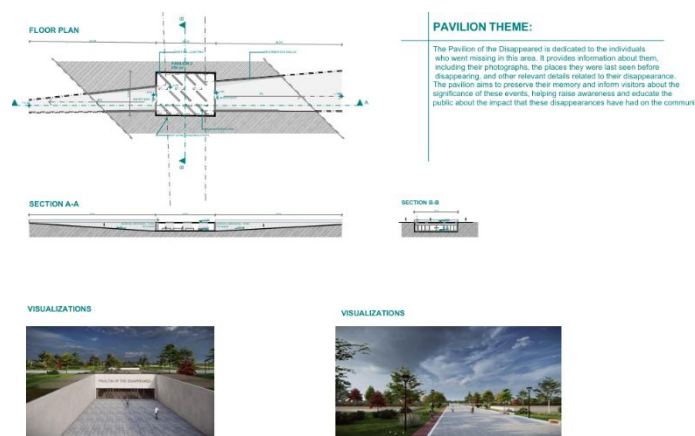


Fig. 16. Pavilion of Disappeared (from authors A.R, E.S, L.S)

to their disappearance. Through its architectural form and sensitive presentation, the pavilion encourages visitors to pause, reflect, and understand the emotional and social impact these disappearances have had on the community. It stands not only as a memorial, but also as a place of awareness, education, and collective remembrance.

4. Memorial Park

The Memorial Park is designed as a serene and contemplative landscape where visitors can reflect, remember, and connect with the past. Through its thoughtful layout, carefully selected natural elements, and symbolic features, the park creates a peaceful environment that honors those it commemorates. Pathways guide visitors through quiet green spaces, encouraging reflection and offering moments of solitude, while open areas invite community gatherings and collective remembrance. Overall, the Memorial Park serves as a meaningful public space that preserves memory, fosters healing, and strengthens the community's sense of history and unity.

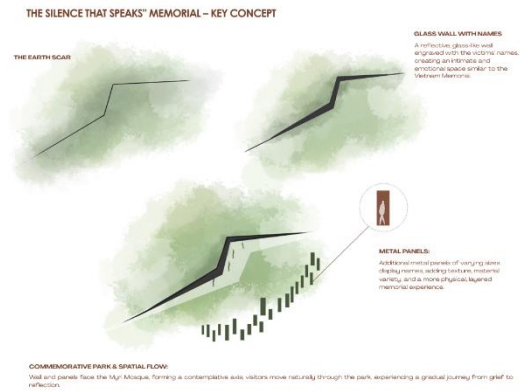


Fig. 17. Memorial Park (from authors A.R, E.S, L.S)



5. Commercial Spaces – Integrated

The commercial spaces within the Memory Park are conceived not as independent or dominant elements, but as subtle extensions of the landscape. Their role is to support the park's public life while respecting the memorial character of the site. These spaces include small cafés, bookshops, and cultural retail areas related to memory, education, and reflection. Rather than commercializing the experience, they enhance the value of the park by encouraging longer stays, informal encounters, and continuous use throughout the day.

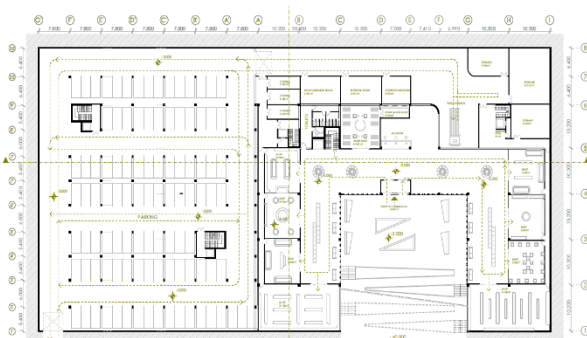


Figure 18 Semibasement of comercial center

Architecturally, the commercial spaces are embedded into the terrain, following the same language as the gallery. Their volumes are partially sunken, allowing the landscape to flow over roofs and facades, minimizing visual impact and preserving the openness of the park. This integration reinforces the idea that architecture emerges from the ground, rather than being placed upon it. Materiality is restrained and consistent with the memorial context concrete, earth, and muted textures ensuring that the spaces remain quiet and respectful. Transparency is used selectively, creating a gentle dialogue between interior activity and the surrounding landscape without disrupting the contemplative atmosphere.

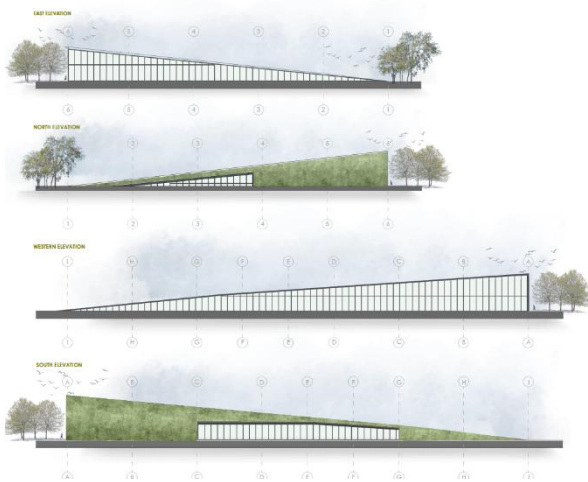


Figure 19 elevations of commercial center

As a value, these commercial spaces contribute to the sustainability and social vitality of the park. They support maintenance, activate the site beyond ceremonial moments, and transform the memorial into a living public space, where memory coexists with everyday life quietly, continuously, and respectfully.



Figure

6. Conclusion

In conclusion, the Memorial Park represents far more than a physical space — it is a living testament to remembrance, healing, and community resilience. By thoughtfully blending natural landscapes with symbolic architectural elements, the park creates an atmosphere that invites visitors to slow down, reflect, and connect emotionally with the stories and histories it honors. It serves as a bridge between generations, ensuring that the memories of those commemorated are preserved with dignity and respect. The park not only fosters individual contemplation, but also provides a shared public environment where collective remembrance can strengthen social bonds and inspire a deeper understanding of the past. Ultimately, the Memorial Park stands as a meaningful contribution to the cultural and emotional fabric of the community, promoting awareness, unity, and hope for the future.

References

The entire content has been produced by the authors of this project.