

# FINDING PEACE

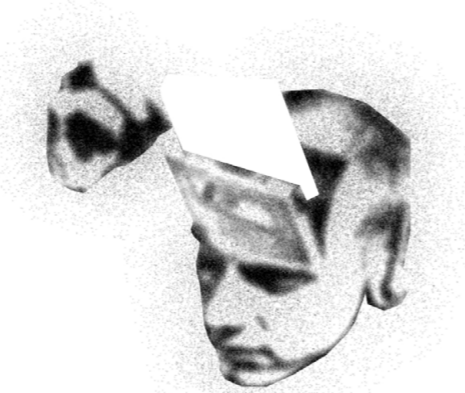
ARSENAL MEMORY PARK COMPETITION

# I CONCEPT / THE DUALITY OF HISTORY

The 20th-century history of Argentina is deeply riddled with a fundamental **duality** of contradictions and unspoken truths. The «Dirty War» remains an unhealing wound on the nation's body: out of 30,000 forcibly disappeared citizens, only 1,000 bodies have ever been found. The families of the remaining victims were left without answers. Unable to move forward, they cannot accept the **present** and continue to turn to the **past**, desperately clinging to every single fragment of information.



People vanished without a trace, without trial or investigation. The state apparatus pressured society, attempting to instill the belief that these citizens never existed and that their loved ones should forget everything as quickly as possible. The children of the disappeared, taken from their parents in infancy, live among us today, unaware of their true history. People are **here**, yet at the same time, they are **gone**.



The regime eventually changed, and the modern government of Argentina made attempts to investigate the crimes of the military junta. However, for the authorities, the priority became closing this dark chapter of history as quickly as possible for the sake of political stability. A quiet conflict of interest emerged: the state actively sought **not to know** and to consign the uncomfortable truth to oblivion, while the mothers of the disappeared demanded **to know** it entirely, refusing any compromising silence.



This is precisely why the mothers are not ready to forget. For instance, the «Mothers of the Plaza de Mayo» movement actively protested against the opening of a memorial promenade in Buenos Aires. They did not want formal, state-directed mourning—they demanded justice. The oblivion of violence is inextricably linked to trauma, which is characterized by the inability to fully **remember**, yet completely unable to **forget**.



Subsequent trials of war criminals, followed by amnesties and the dismissal of cases, failed to bring the long-awaited peace to society. Many officers and generals, as well as their families, still do not acknowledge their guilt to this day, viewing themselves not as perpetrators but as victims of the system and the communist threat. These events raise deeply uncomfortable but necessary questions about where exactly the line between **perpetrator** and **victim** is drawn.

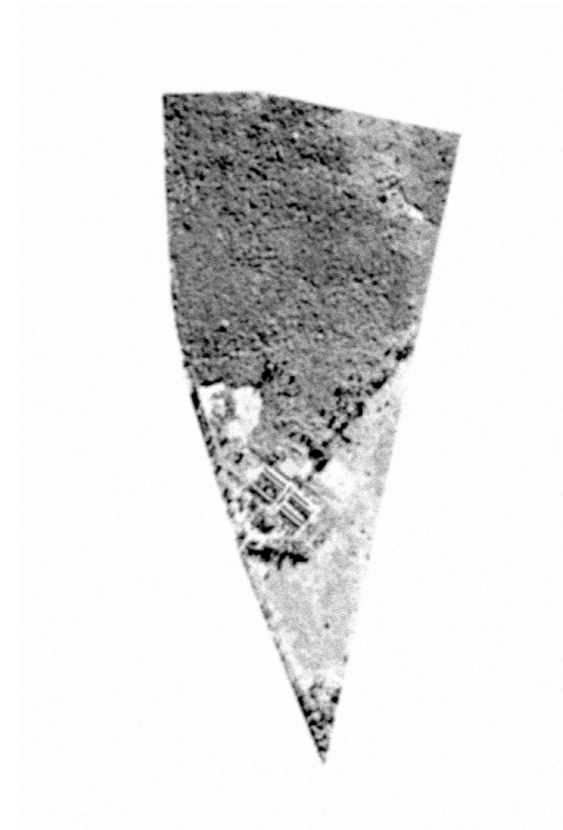
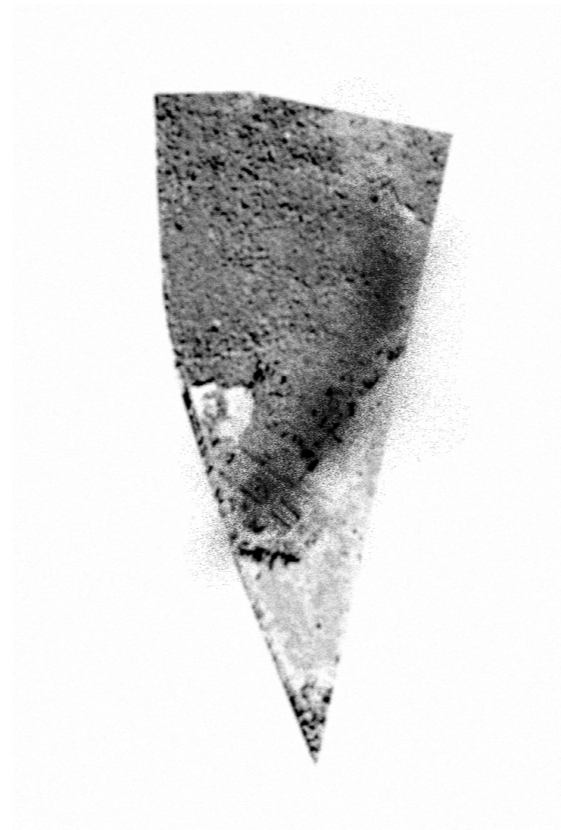


Today, loved ones are still unable to mourn the missing and accept reality as long as answers remain unfound. At the same time, a segment of society still denies that large-scale war crimes ever took place. With each passing year, we drift further away from historical truth, and under these circumstances—where some **deny** and others **accept** the fact of the tragedy—dialogue and cooperation remain the only ways to find mutual understanding.

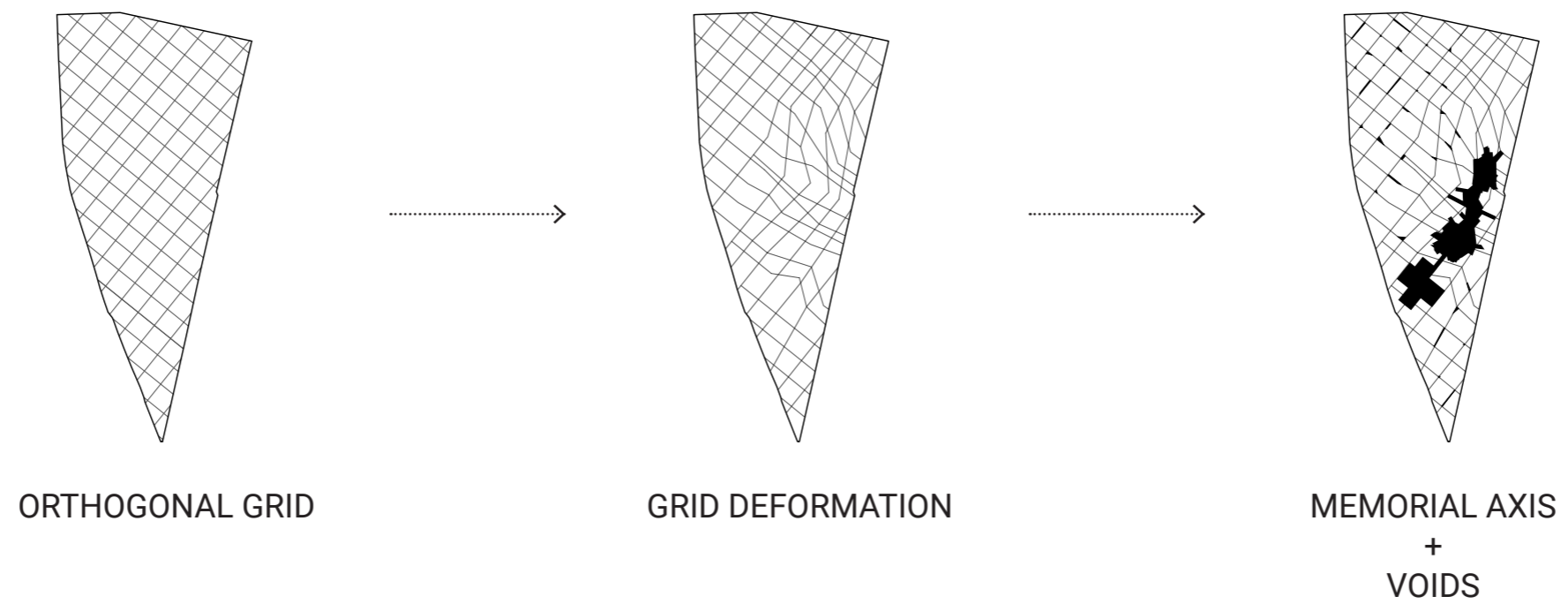




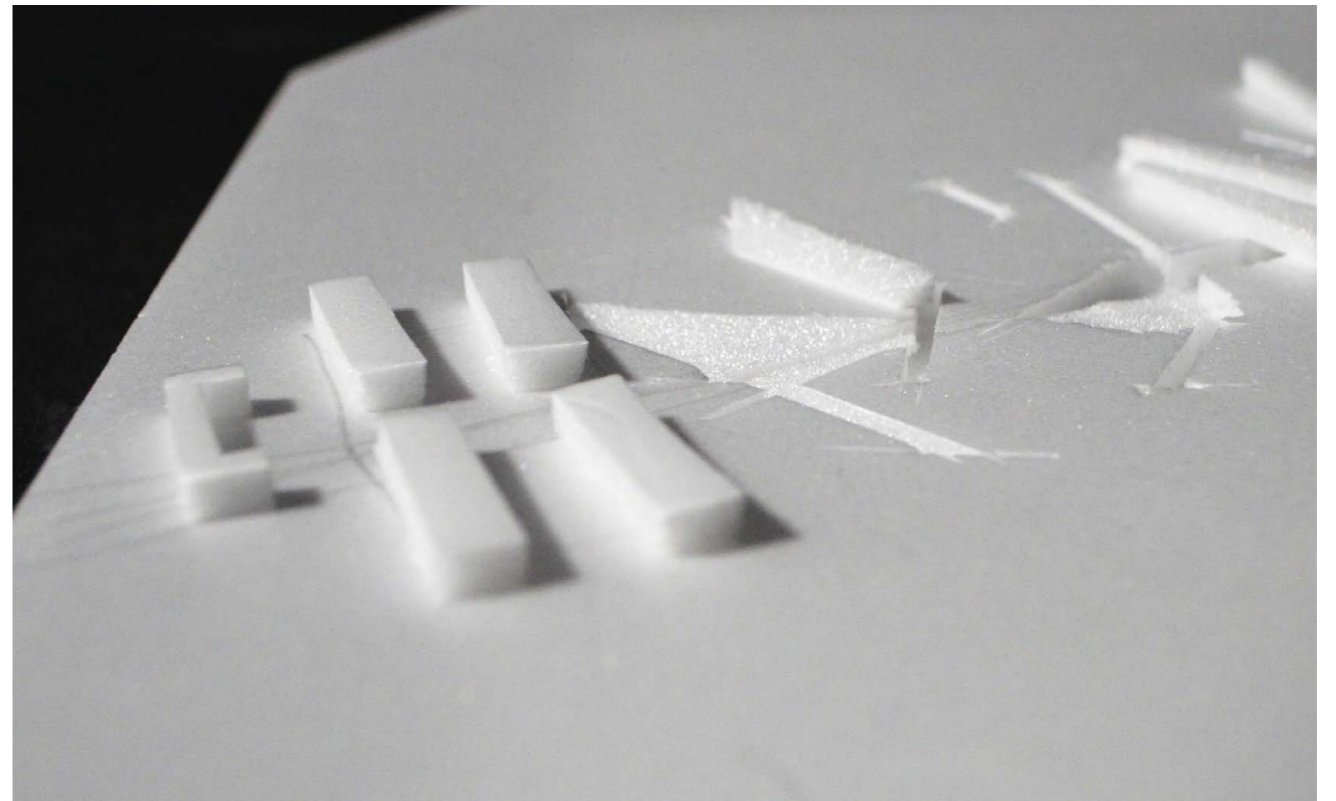
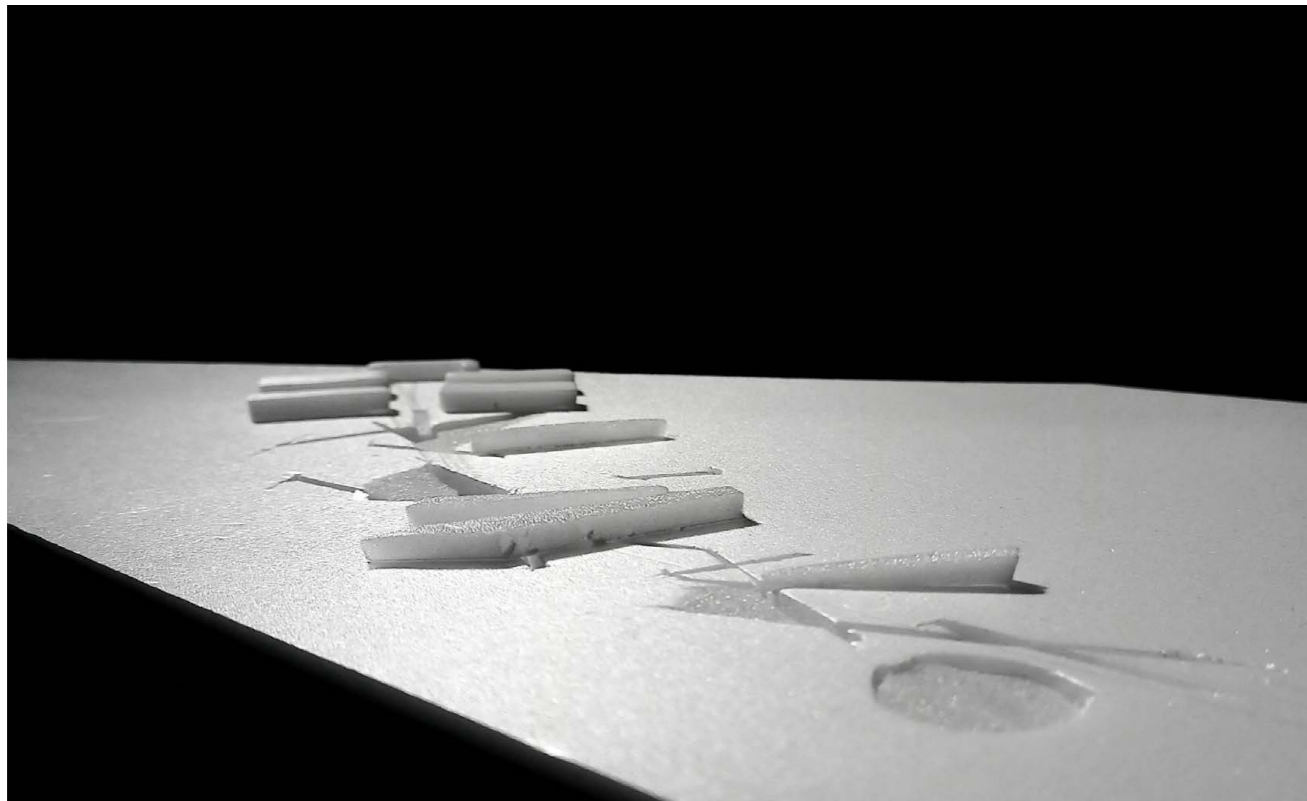
Yielding to nature, past pain turns into history, and history dissolves into silent eternity.



While the center remains functional, the complex evolves over time: currently holding the hope of finding answers, it matures into a memorial before nature eventually embraces the site in eternal peace.



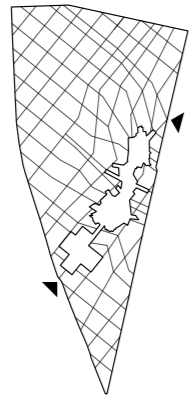
The geometry of the park is created from an orthogonal grid that fractures along the memorial axis. At the intersections of the grid, the park's voids are located, forming a network of spatial installations.



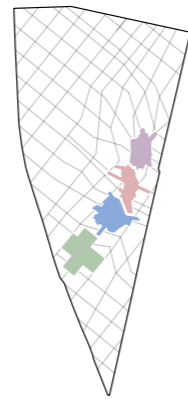
## II MEMORY PARK/ SPATIAL ORGANIZATION

The composition of the memorial park is rooted in an orthogonal grid that fractures along the main Memorial Axis. This axis integrates **the historical exhibition** within the old barracks, **the memorial halls** of duality, **the memory maze**, and **the interpretation center**. The visitor's journey is

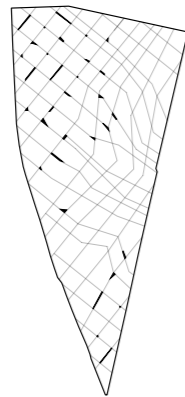
non-linear; the path can be traversed in any direction, facilitated by two main entrances to the park. At the intersections of the site grid, spatial installations known as Voids are positioned, symbolizing the disappearances and the unhealing wounds of history.



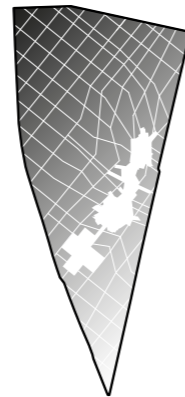
CIRCULATION & ACCESS



FUNCTIONAL PROGRAM



VOIDS



VEGETATION DENSITY



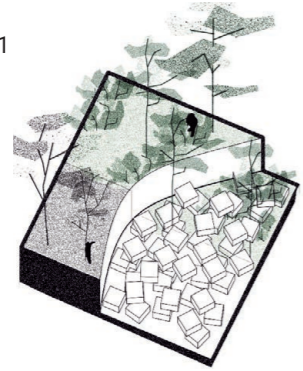
1. Parking
2. Visitors center
3. Historic exposition
4. Administration
5. Memorial center
6. Memory maze
7. Interpretation center

# II MEMORY PARK/ VOID TYPOLOGIES

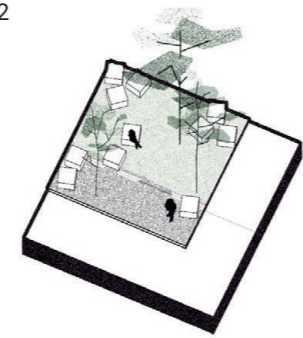
FUTURE  
PRESENT

VOID - BARRIER

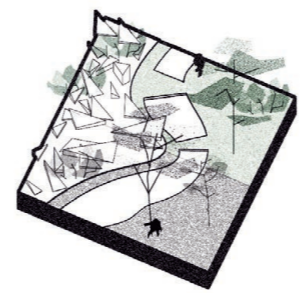
A1



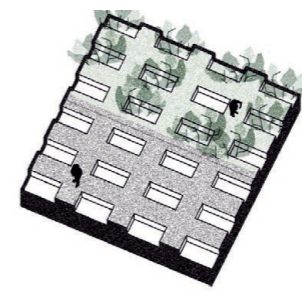
A2



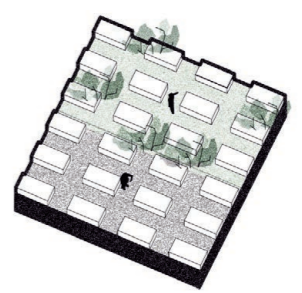
A3



A4

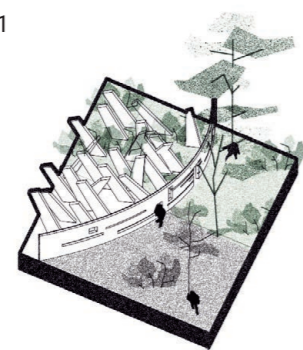


A5

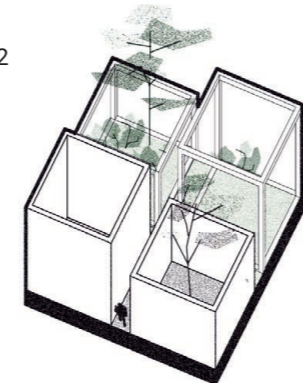


VOID - BLIND SPOT

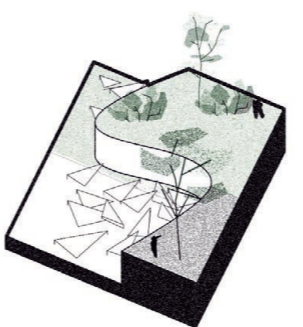
B1



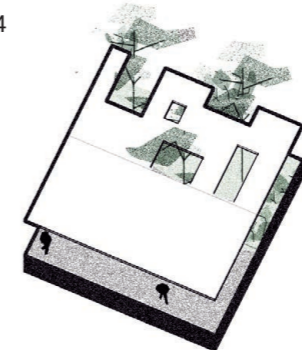
B2



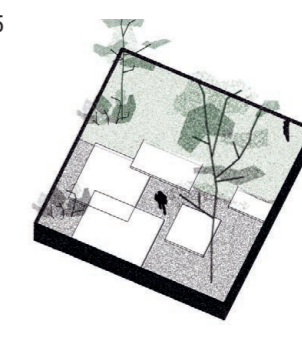
B3



B4

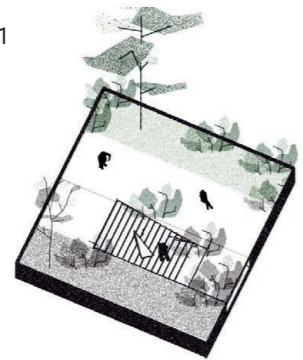


B5

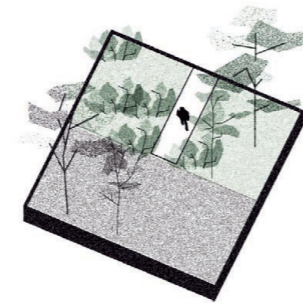


VOID - NOTHING

C1



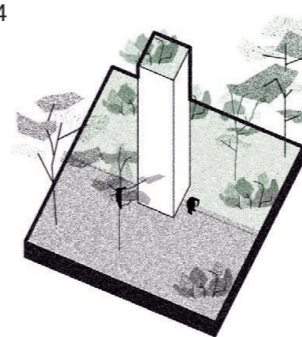
C2



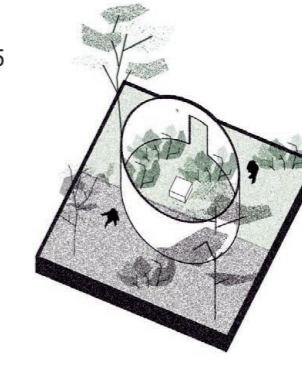
C3



C4

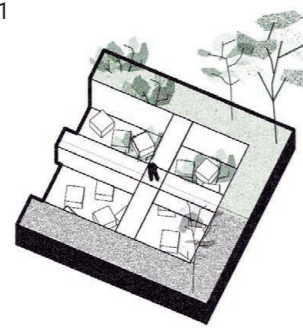


C5

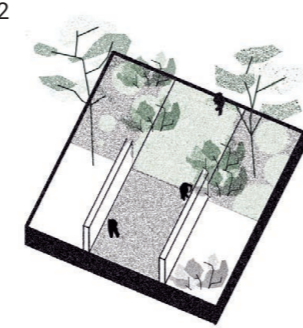


VOID - FRAME

D1



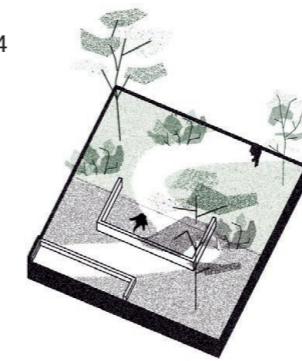
D2



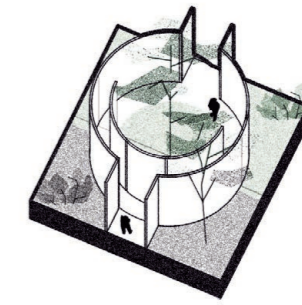
D3



D4



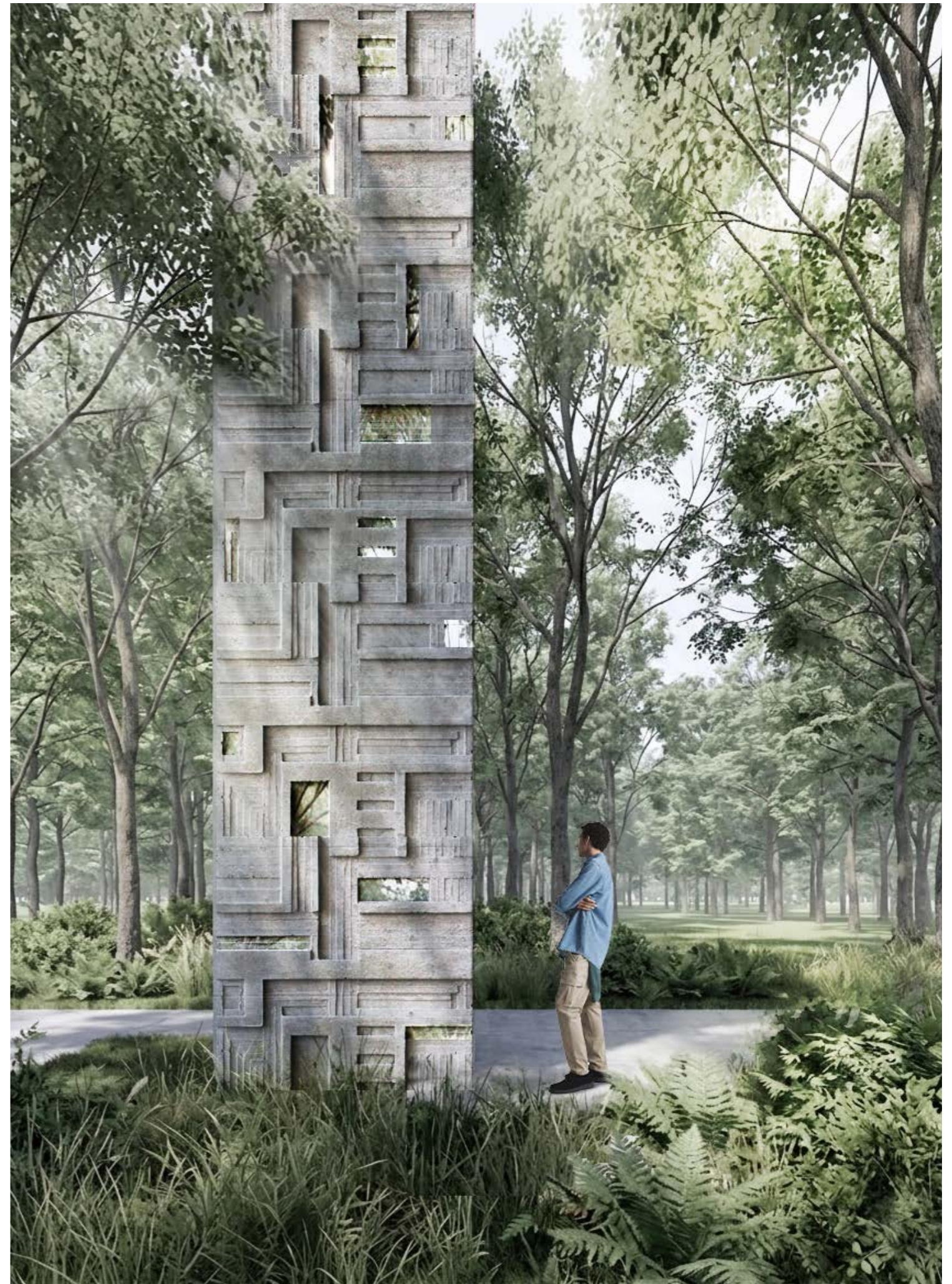
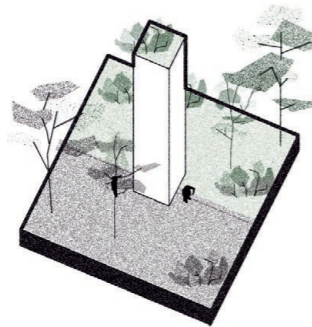
D5

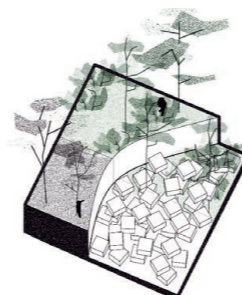


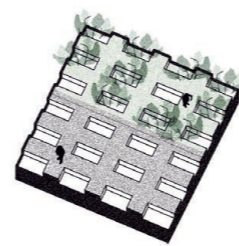
## II MEMORY PARK/ VOIDS

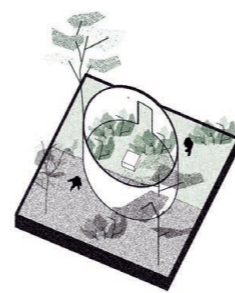
Located at the intersections of the grid, a network of spatial installations conceptualizes the phenomenon of the void through different lenses—as a barrier, a blind spot, an absence, or a framing marker. These concrete interventions act as historical scars left upon the terrain, symbolizing deep-seated trauma and irreversible loss.

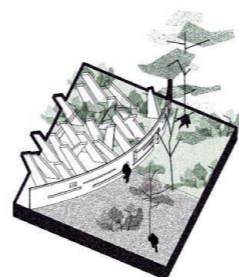
Over time, these architectural marks undergo a natural transformation alongside the shifting landscape. While nature gently reclaims and heals some of these physical fractures, others remain deliberately unyielding, standing as a permanent reminder of past pain.

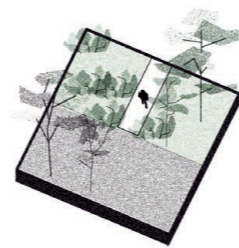












Wandering through the serene beauty of the vibrant green park, visitors unexpectedly encounter these raw, unsettling voids that disrupt the landscape. This deliberate spatial discomfort evokes a sharp sense of absence and grief, forcing an immediate, visceral confrontation with the tragic history of the site.

### III MEMORY AXIS/ FUNCTIONAL ZONING



#### INTERPRETATION CENTER

An educational center, conference hall, and auditorium — spaces for discussion, seeking answers, and holding onto hope.

#### MEMORY MAZE

The memorial plaza takes the form of a Maze. A transitional space between the memorial and the interpretation center.

#### MEMORIAL CENTER

Halls of duality, offering visitors an opportunity to feel, remember, and find answers to what is unknown within themselves.

#### ADMINISTRATION

#### HISTORIC EXPOSITION

The historic exhibition unfolds the history of the site and the prisoners of the Arsenal camp

#### VISITORS CENTER

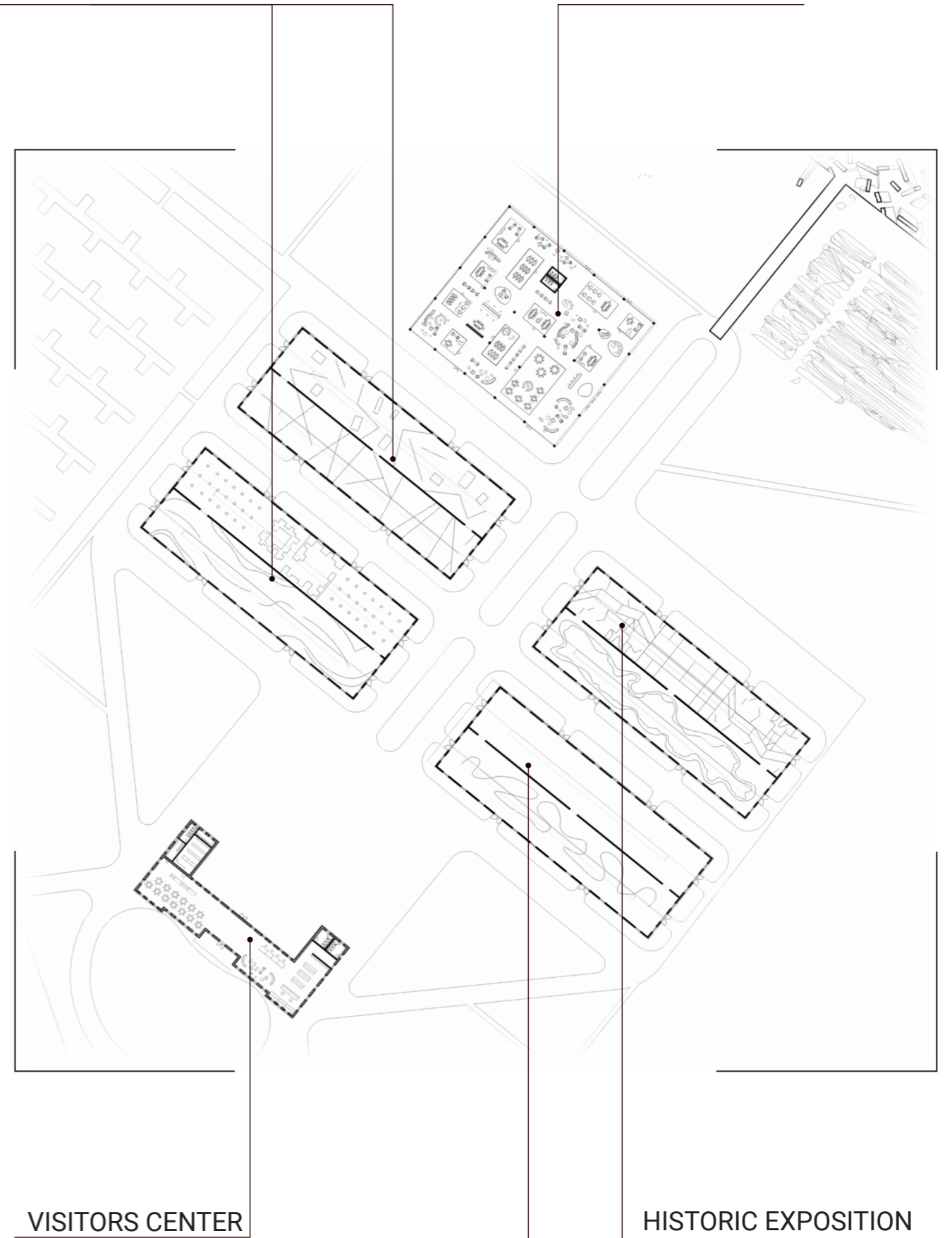


### III MEMORY AXIS/ MAIN ENTRANCE COMPLEX



### HISTORIC EXPOSITION

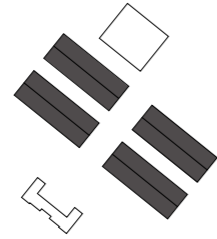
### ADMINISTRATION



### VISITORS CENTER

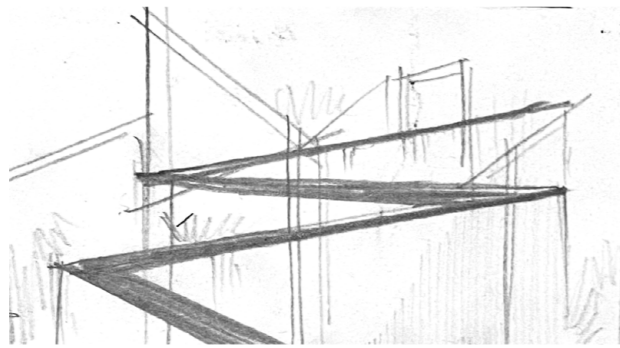
### HISTORIC EXPOSITION

### III MEMORY AXIS/ MAIN ENTRANCE COMPLEX



#### HISTORIC EXPOSITION

The historic exhibition is housed within the preserved structures of the old barracks, detailing the history of the site and the prisoners of the Arsenal camp. The scenography aims to contextualize the prerequisites of the atrocities committed by establishing a timeline of historical events, chronicling the unyielding struggle of the mothers, and leading up to the present day—demonstrating how the interpretation center facilitates the search for answers.

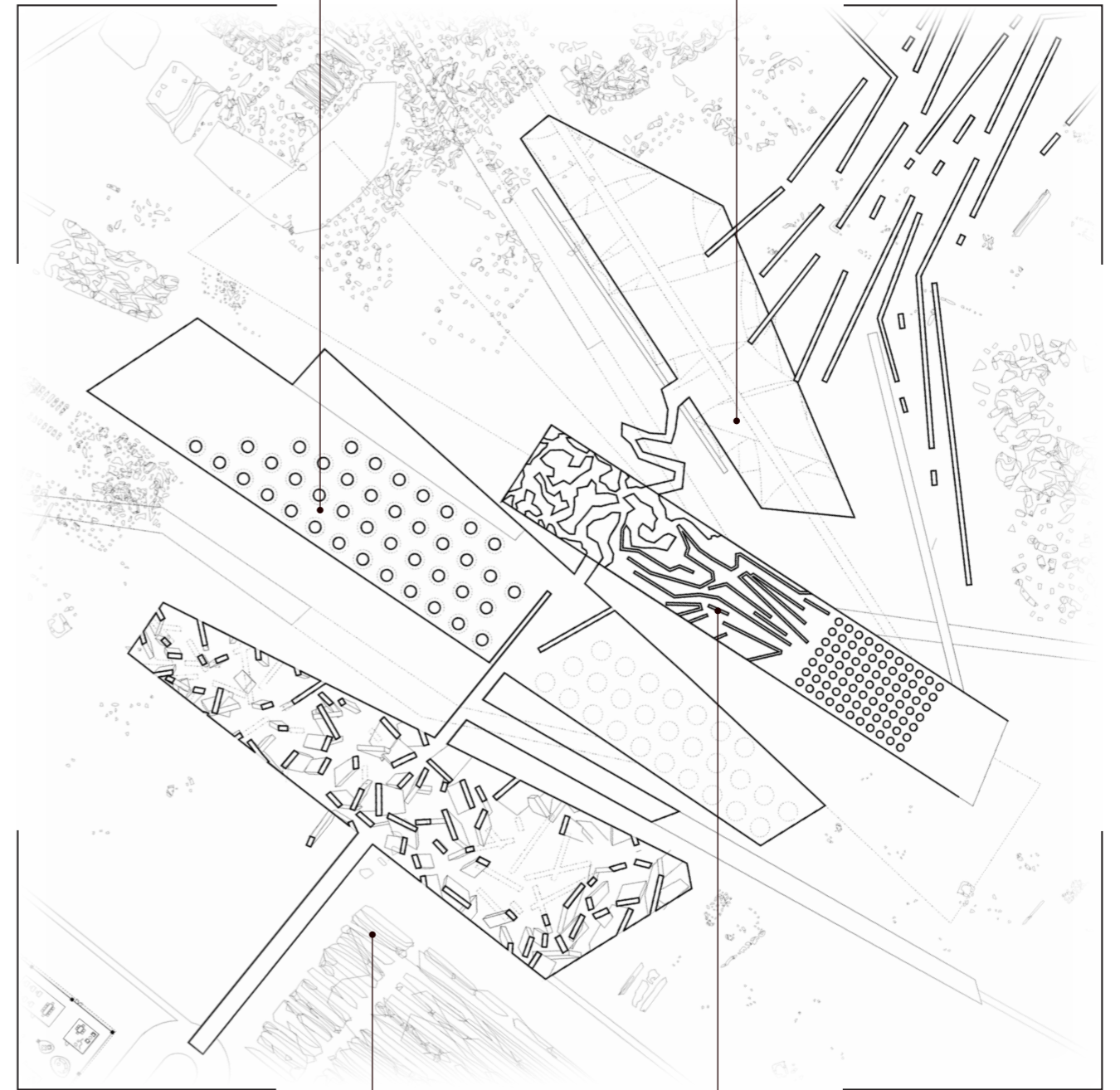


III MEMORY AXIS/ MEMORIAL CENTER



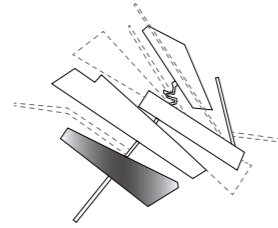
HERE / GONE

DENY / ACCEPT



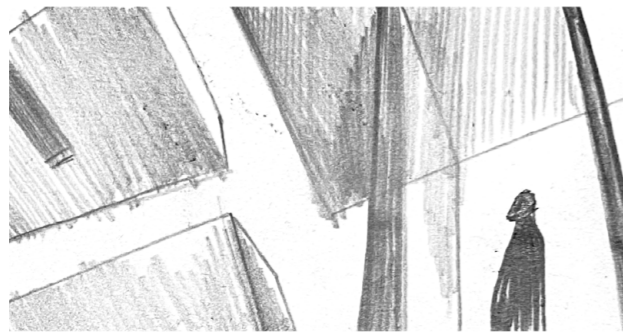
PERPETRATOR / VICTIM

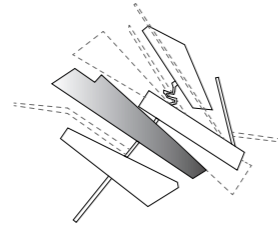
TO KNOW / NOT TO KNOW



HALL OF DUALITY — PERPETRATOR / VICTIM

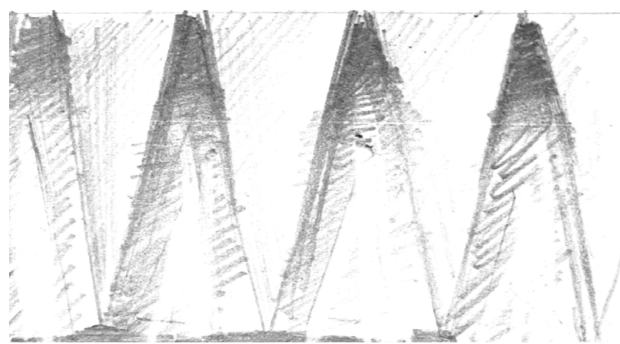
The memorial center's layout opens with two dual halls—«perpetrator» and «victim»—which seamlessly flow into one another. The hall is defined by a forest of monumental columns that densify toward the center and disperse along the edges of the elongated space, softly merging into the park on one side and transitioning into a sacred area on the other. The fractured geometry of the columns creates an unsettling atmosphere, evoking the profound pain experienced by the camp's prisoners.



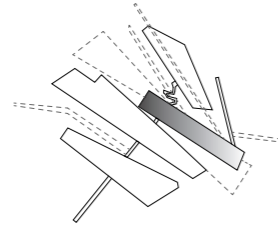


HALL OF DUALITY – HERE / GONE

The «here» hall is structured by orthogonal rows of cone-shaped concrete columns, whereas in the «gone» hall, those same conical pillars materialize only as beams of light from spotlights in an otherwise completely empty room. This sharp contrast underscores the fragile boundary between presence and absence, demonstrating that nothing vanishes without a trace—the memory of the disappeared endures with us.

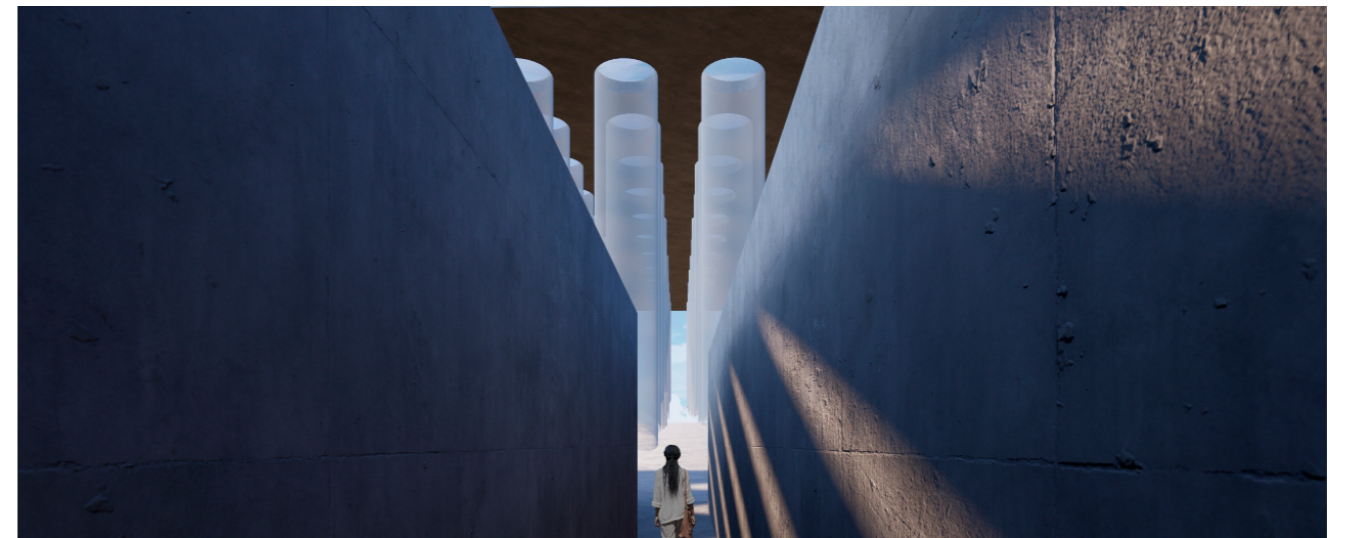


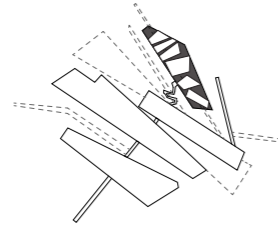
### III MEMORY AXIS/ MEMORIAL CENTER



#### HALL OF DUALITY – TO KNOW / NOT TO KNOW

The memorial center opens with two dual halls: «perpetrator» and «victim». The space is shaped by a forest of monumental columns: on one side of the elongated halls, their density decreases, seamlessly merging into the park, while on the other, the columns loom over an empty circle beneath dramatic ceiling apertures. At this focal point, the visitor is left alone with the silence and the ultimate question: where is the line between perpetrator and victim drawn?



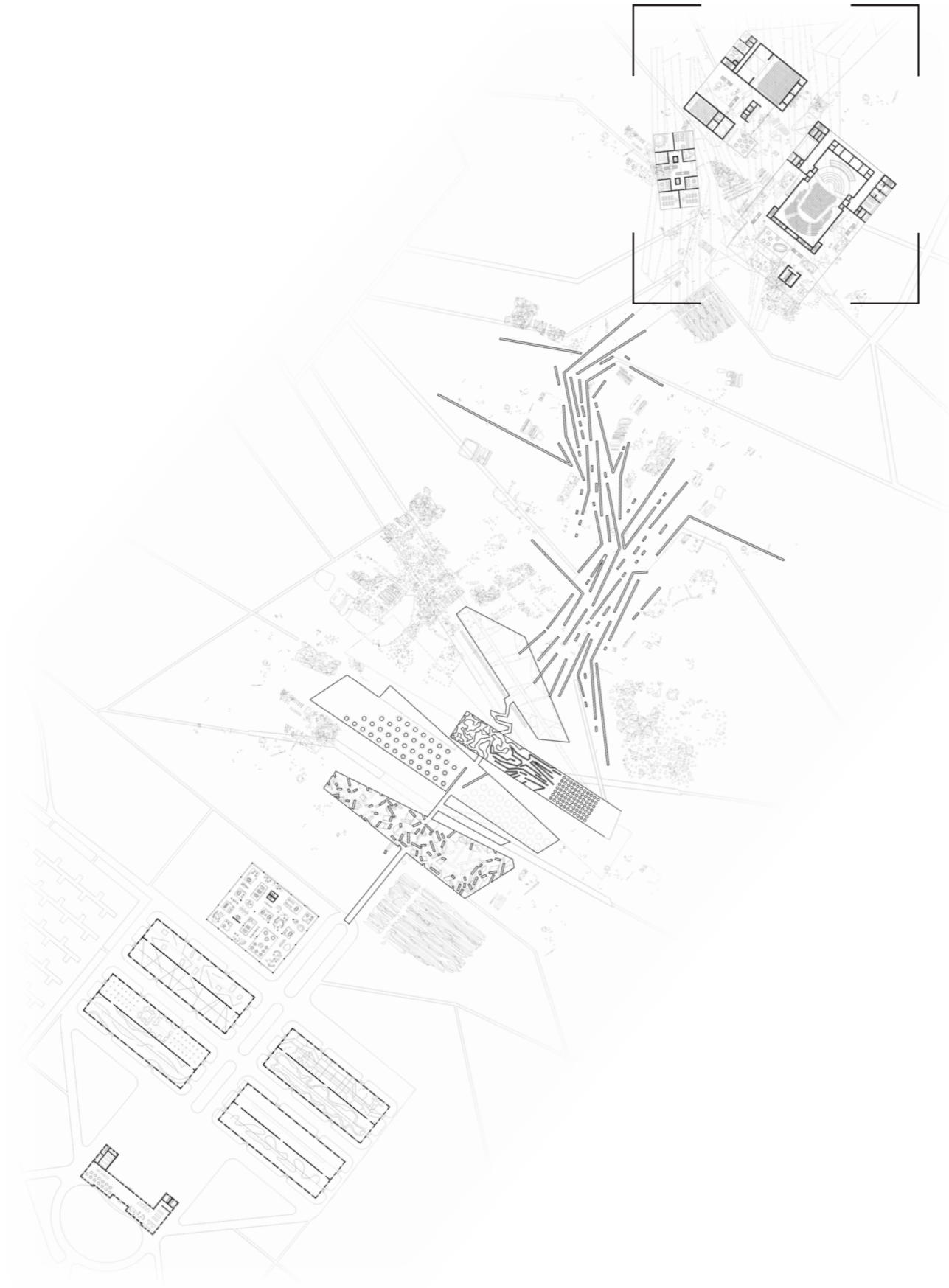


HALL OF DUALITY – DENY / ACCEPT

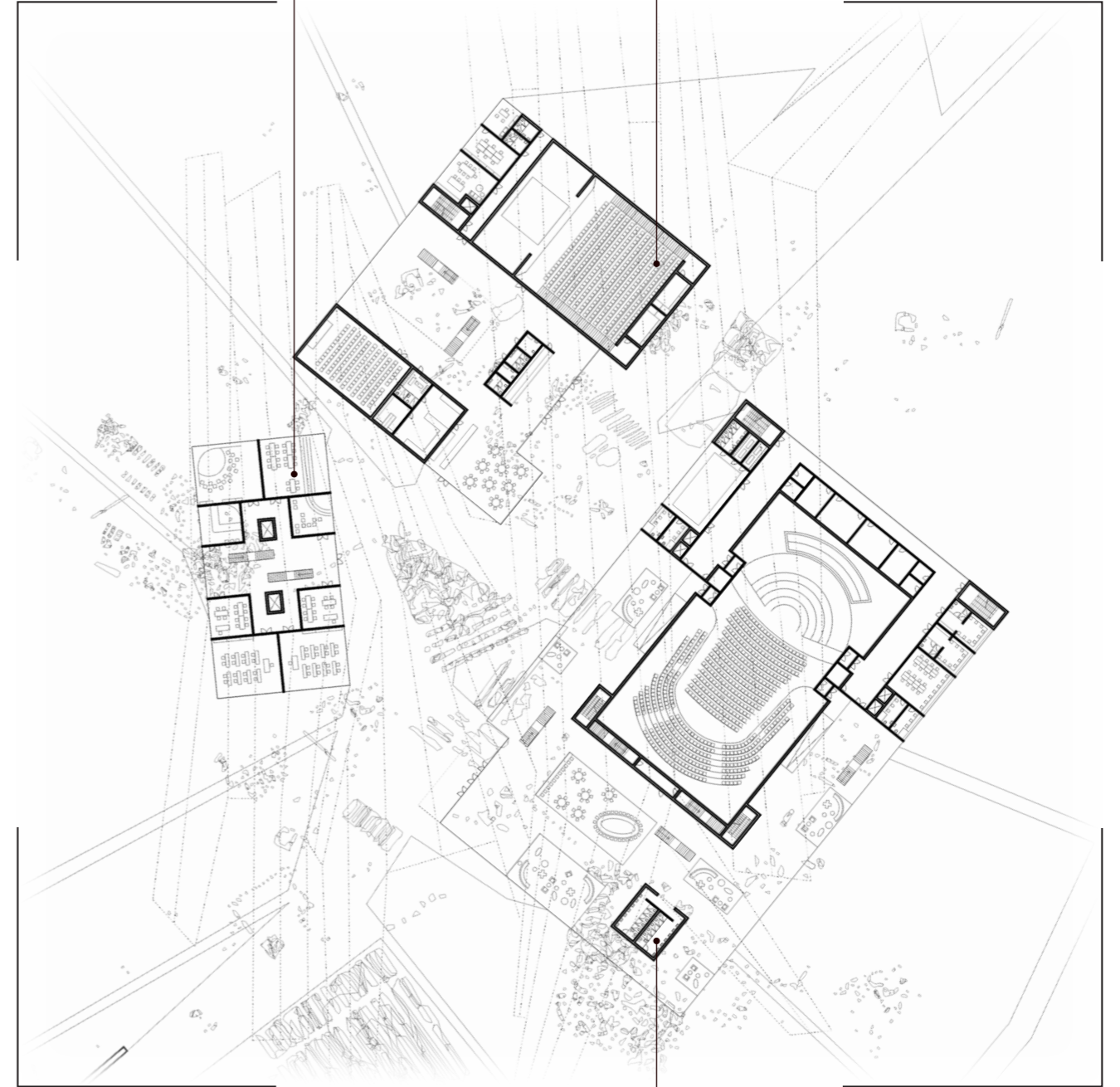
The «deny» and «accept» halls function as a single, elongated volume that can be traversed via two distinct paths. A visitor can choose the trajectory of «acceptance,» walking beneath the massive fabric sheets that drape the hall—a path rooted in the present. The alternative route of «denial» runs above the hall; from there, one catches only isolated fragments of the «truth» glimpsed through the textile, deliberately choosing a path of isolation from it.



III MEMORY AXIS/ INTERPRETATION CENTER

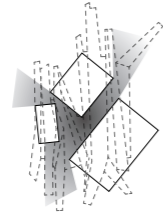


EDUCATIONAL CENTER



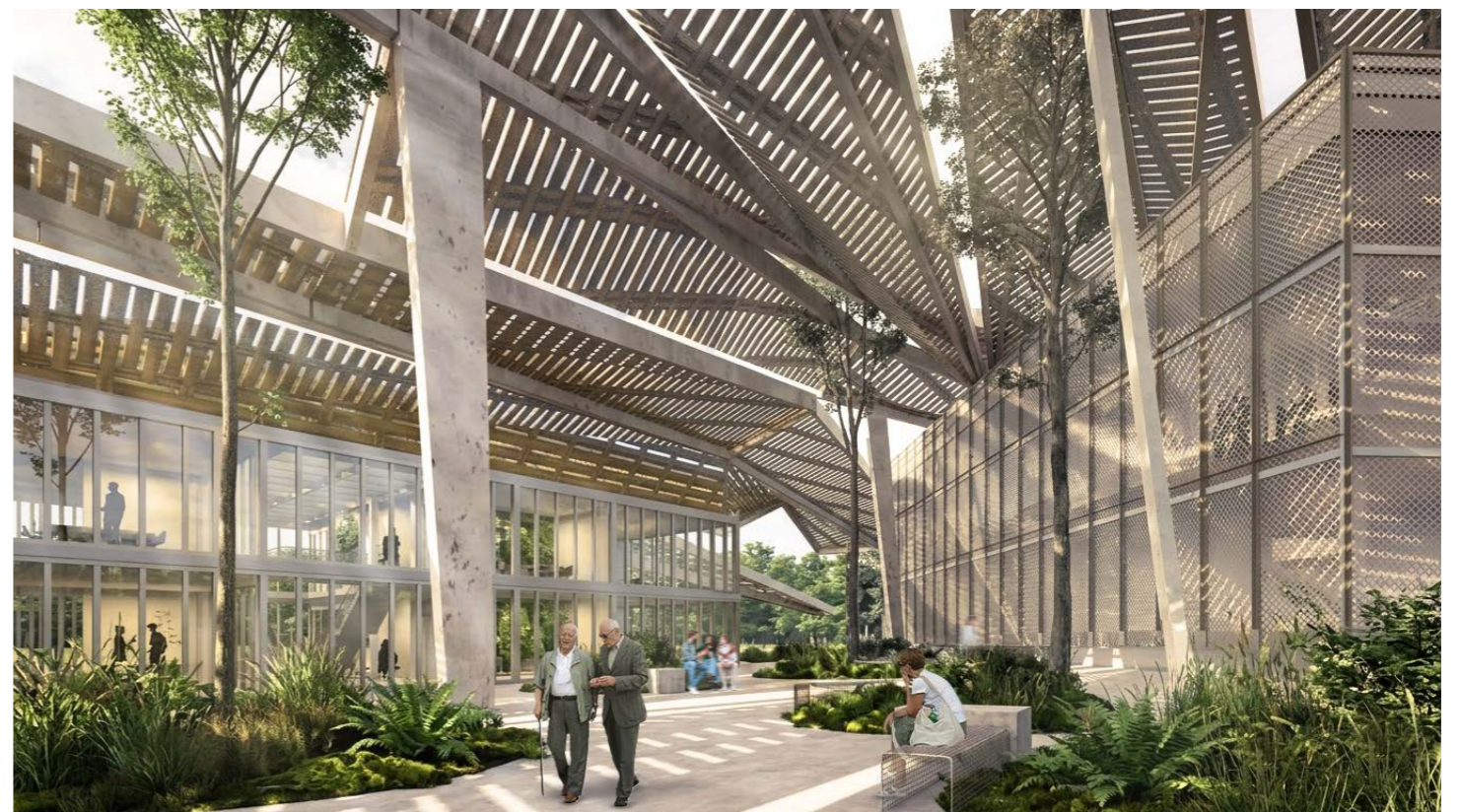
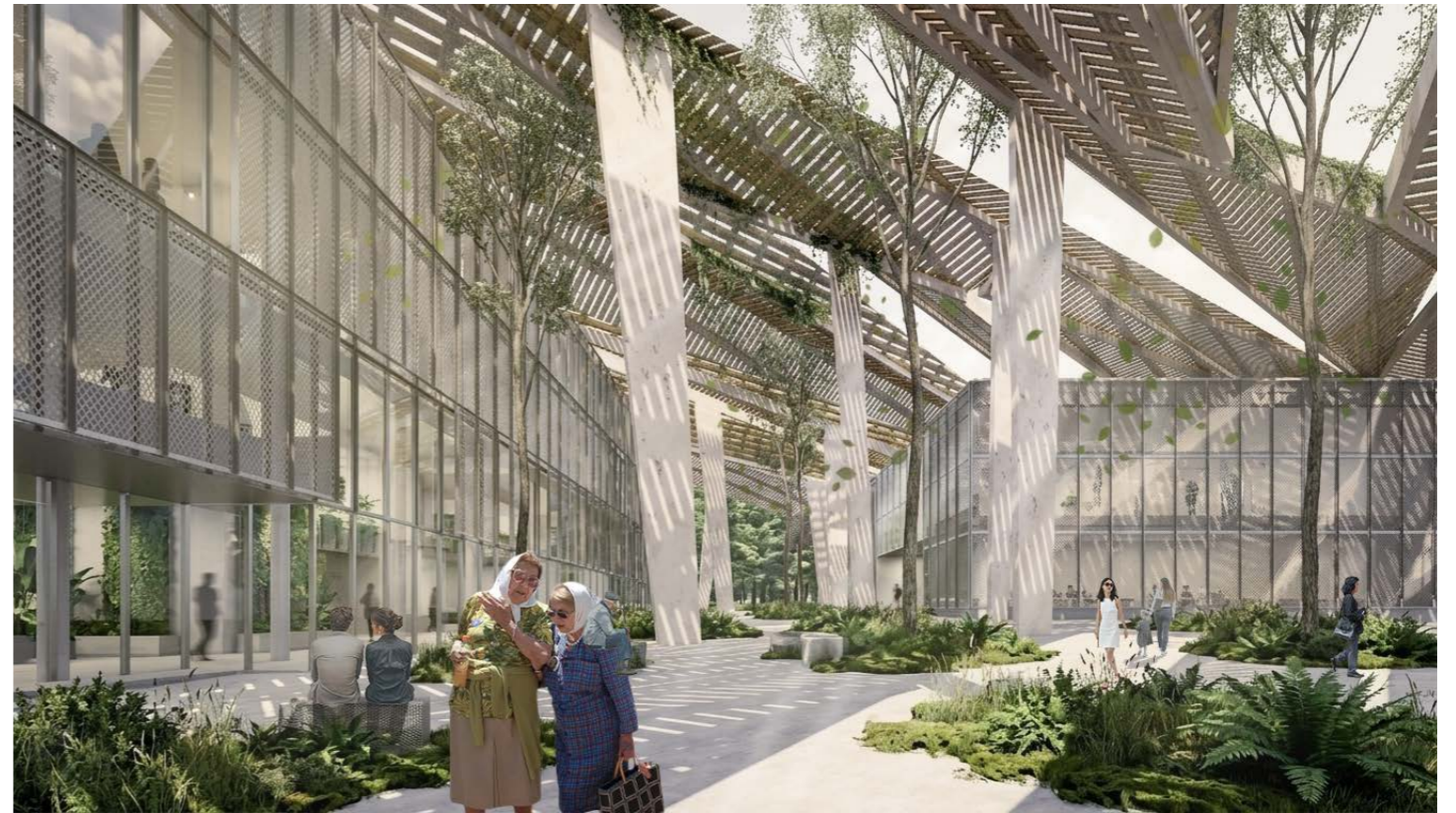
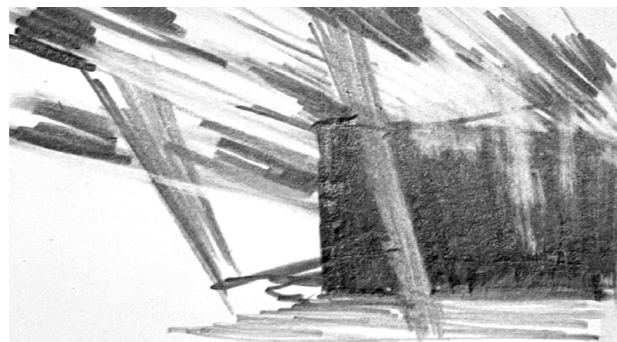
CONFERENCE CENTER

CONCERT HALL

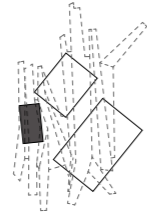


**INTERPRETATION CENTER OPEN HALL**

The interpretation center consists of three orthogonal volumes: an educational block, a conference center, and a concert hall, all united by a fractured roof structure. This spatial arrangement ensures a dispersed layout: nature seamlessly invades the interior, erasing the boundary between the outside and the inside. The character of the lightweight slatted roof evokes an atmosphere of hope.

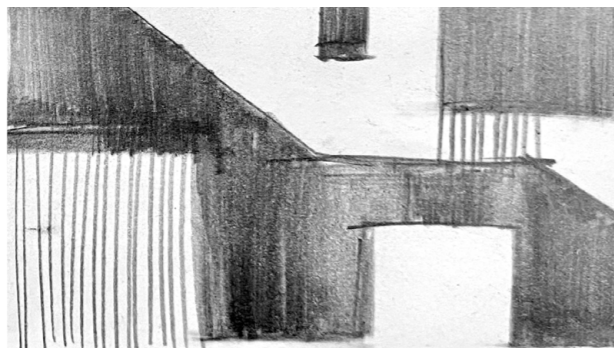


### III MEMORY AXIS/ INTERPRETATION CENTER

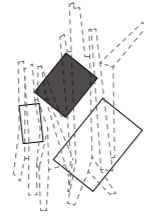


#### EDUCATIONAL CENTER

The educational center expands upon the idea of openness and the integration of the landscape into the interior. The space is designed as a flexible learning environment, where seamless greenery and abundant natural light facilitate the continuity of memory. It is a place for historical research and learning, designed for new generations to comprehend the past for the sake of a conscious future.

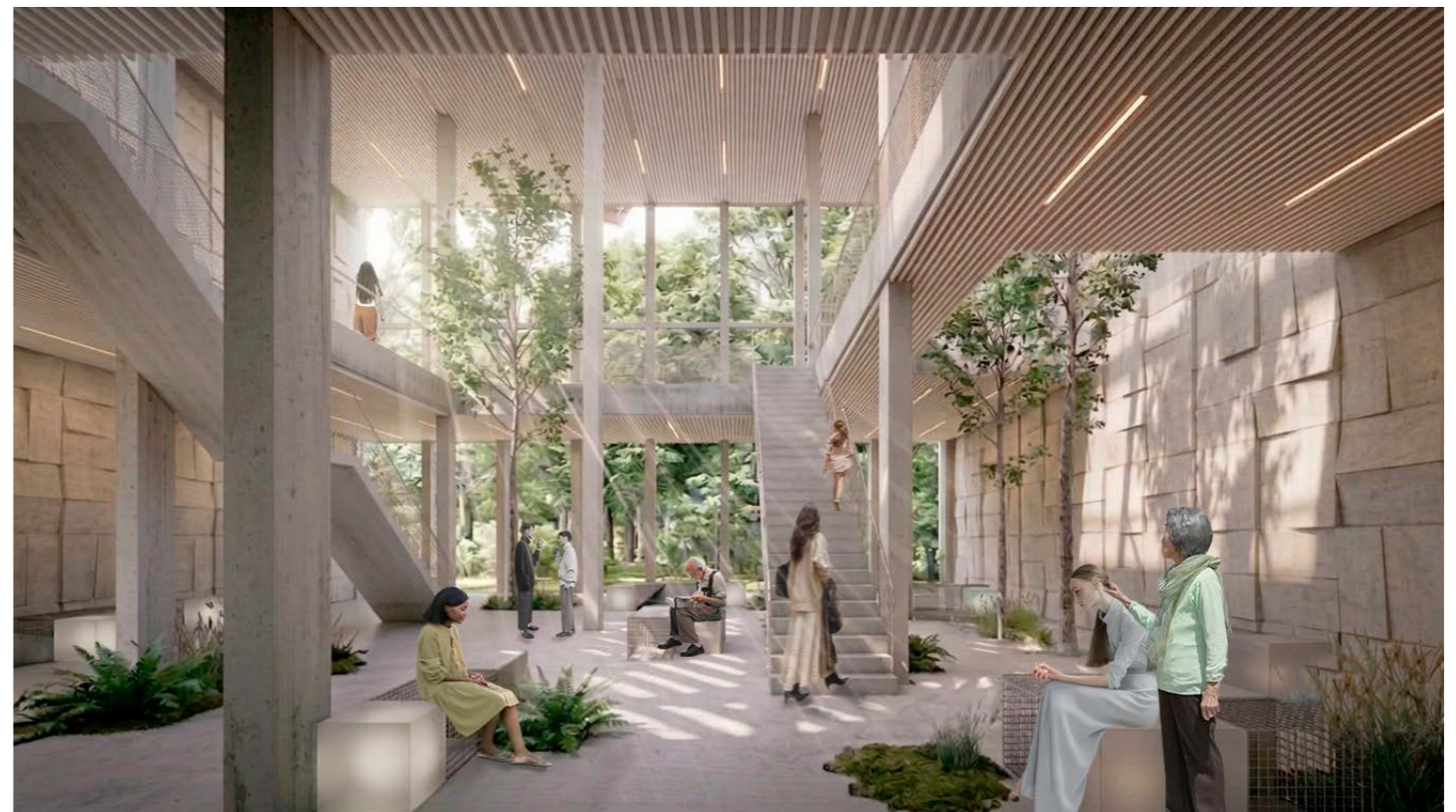


### III MEMORY AXIS/ INTERPRETATION CENTER

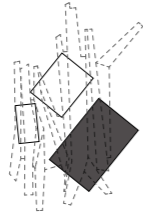


#### CONFERENCE CENTER

The conference center serves as a space for dialogue, the search for answers, and truth. The lobby is defined by an expansive glass roof, creating a light and airy environment for meetings and discussions. The facade consists of wire mesh panels designed to corrode over time and become integrated with growing greenery.

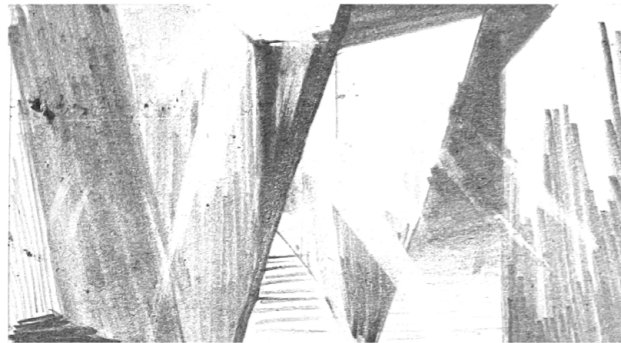


### III MEMORY AXIS/ INTERPRETATION CENTER



#### CONCERT HALL

The space of the concert hall is shaped by orthogonal Voids, referencing the theme of disappearances and the absence of information. This identical design gesture is repeated on the building's facade through the articulation of the wire mesh panels.





Decades from now, the architecture will inevitably become part of the natural topography, gradually covered by layers of the landscape.



This is a rightful dissolution within the infinite cycle of nature, where the landscape acts as the ultimate domain of acceptance.



The boundaries between the monument and the earth blur, serving as a reminder that every tragedy eventually outgrows its physical markers.

## IV MEMORY AXIS/ NOW AND BEYOND



As society slowly lets go of the past, the spaces once reserved for mourning naturally fade, yielding to the quiet power of renewal.



The interpretation center remains functional under its shroud of greenery; a lasting sanctuary for dialogue and a beacon of hope where the acute historical pain finally transitions into a state of eternal, silent peace.