



ReTejer *la* Memoria

ReTejer la Memoria reimagines Arsenal de Tucumán as a living landscape where fragmented memories are woven back together through heritage, nature, culture, and community. By reconnecting traces of the past with spaces for learning and public life, the project transforms remembrance into an active force that shapes a more conscious and resilient future.

ReTejer la Memoria

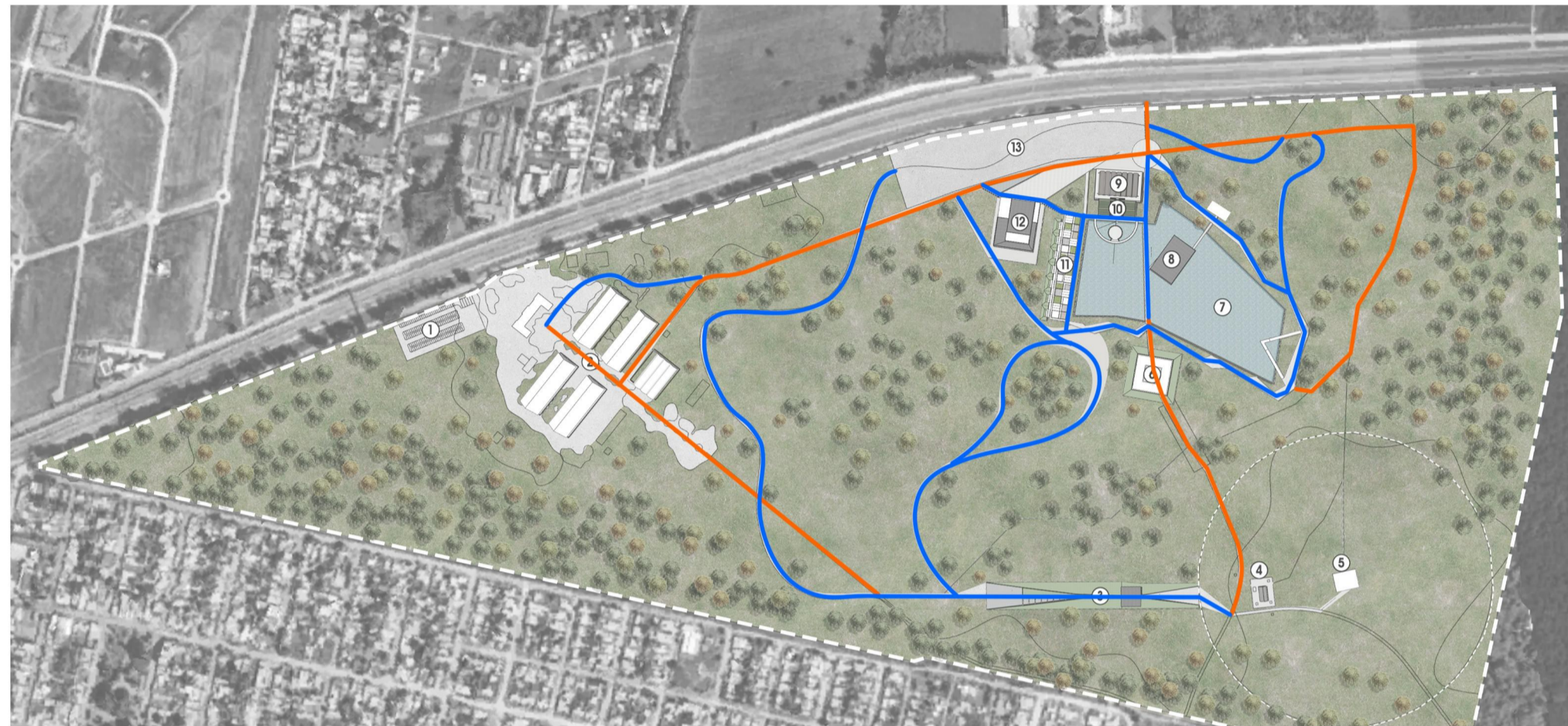
CONCEPT

ReTejer la Memoria reimagines Arsenal de Tucumán as a living landscape where fragmented memories are woven back together through heritage, nature, culture, and community. By reconnecting traces of the past with spaces for learning and public life, the project transforms remembrance into an active force that shapes a more conscious and resilient future.



PRESERVE AND REACTIVATE HISTORICAL STRUCTURES

Maintain the existing buildings as spatial witnesses of the site's past, including Galpón 9 and the mass-grave area. These preserved elements become anchors of memory, reactivated through adaptive reuse and respectful landscape design that transforms silence into collective reflection.



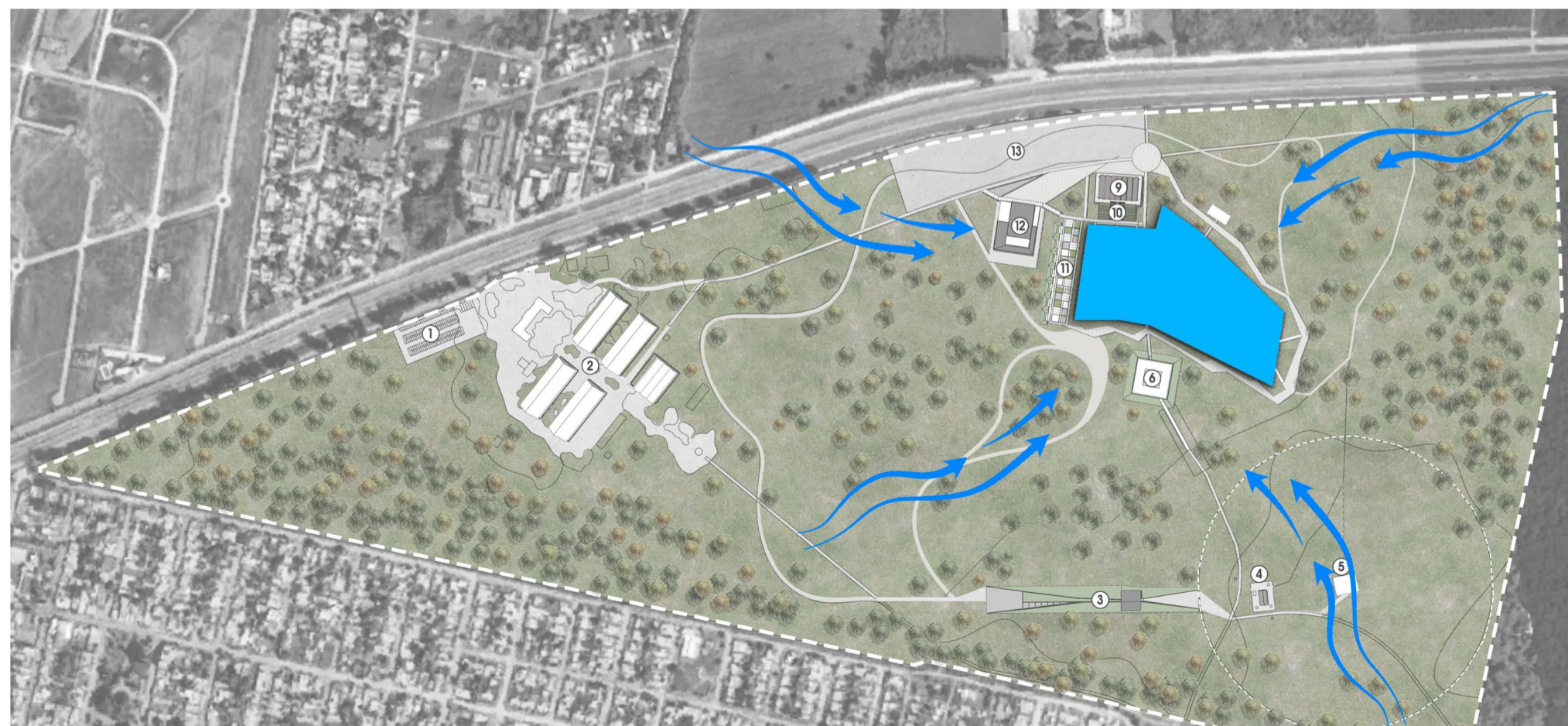
INTEGRATING PAST ROUTES, DESIGNING NEW PATHS

The existing circulation (orange) is preserved as traces of past movement, acknowledging the site's historical layers. New circulation (blue) is carefully introduced to connect memorial, public, and innovation zones, ensuring accessibility while reshaping the experience of the site. Together, old and new paths form a dual system of continuity and transformation—where memory is respected, and renewal is enabled.



EXPERIENCE LOOP

A continuous loop links the memorial core and public plazas. Movement through the site becomes a simple yet powerful journey—connecting testimony, reflection, and renewal.



WATER MANAGEMENT SYSTEM

Designing an artificial lake as a retention basin to absorb and regulate rainwater runoff from the surrounding urbanized highlands. Beyond its ecological role, the water body becomes a symbolic landscape—a mirror of memory and a reservoir of life—transforming technical infrastructure into a space of reflection and regeneration.



 N **MASTER PLAN**

1. Regular Parking
2. Administration

3. Historical Exhibition Pavilion
& Immersive Audiovisual Showroom
4. Galpon 9

5. Mass Graves
6. Memory Plaza

7. Retention Basin / Artificial Lake
8. Memorial Art Gallery

9. Conference Room Complex
& Classroom Complex
10. Amphitheater

11. Shade House
12. Concert/Recital Hall
13. Shared Parking Area

HISTORICAL EXHIBITION PAVILION IMMERSIVE AUDIOVISUAL SHOWROOM

"A JOURNEY FROM OPENNESS TO AWARENESS."

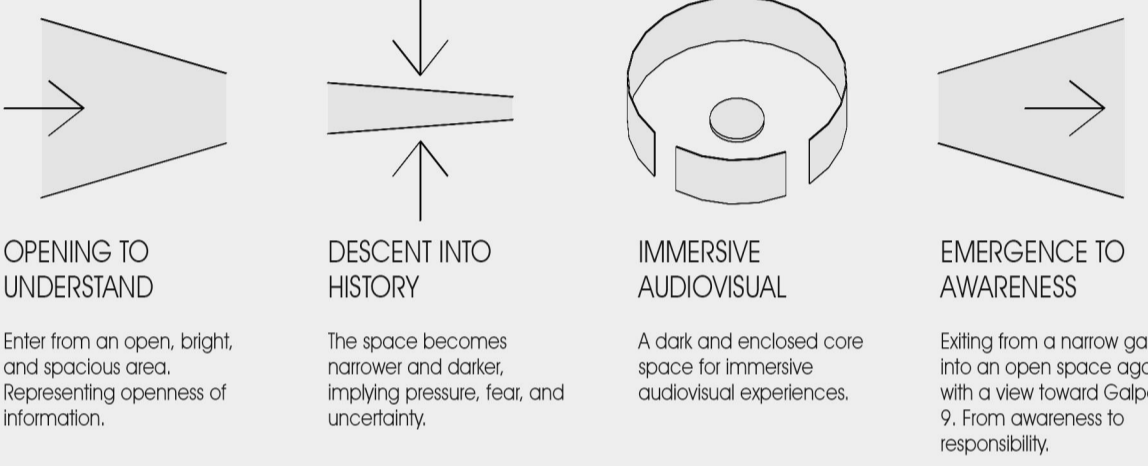
The History Exhibition Pavilion is designed as a spatial narrative of historical discovery.

Visitors enter through a spacious, bright doorway symbolizing openness and everyday perception. As they move deeper into the pavilion, the path gradually narrows and darkens, creating a sense of increasing focus and reflection.

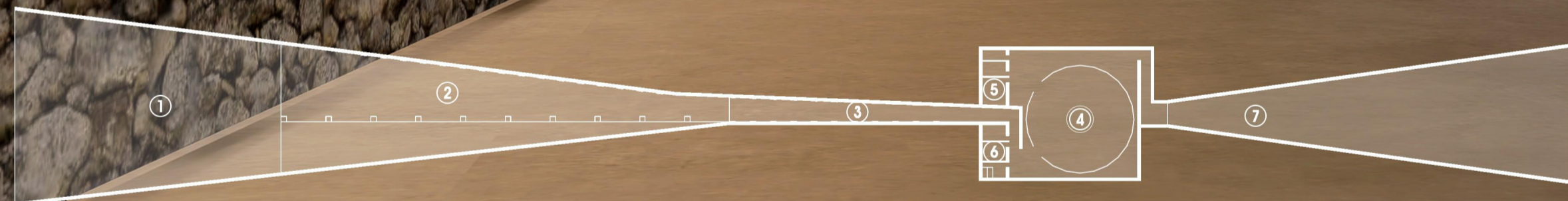
The sequence culminates in an immersive audiovisual space, where historical events are experienced through sound, image, and atmosphere. Upon exiting, visitors undergo a brief transition before emerging back into the open landscape.

Their gaze is immediately drawn to Galpón 9, transforming the building from an exhibition into a living monument—a lasting reminder of memory, truth, and collective remembrance.

JOURNEY DIAGRAM



SITE PLAN

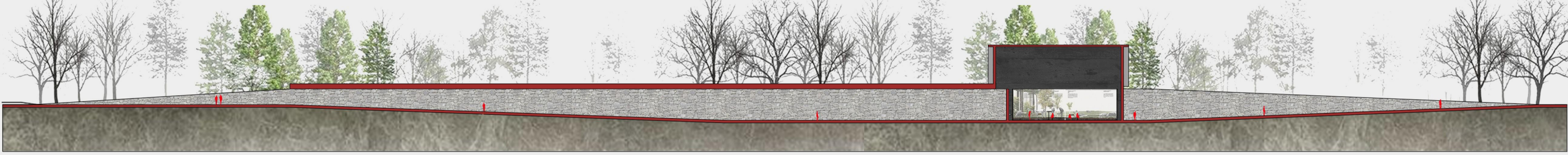


- 1. ENTRANCE
- 2. PAVILION CORRIDOR
- 3. TRANSITION SPACE
- 4. IMMERSIVE AUDIOVISUAL SHOWROOM
- 5. MEP, HVAC / AHU ROOM, SERVER CONTROL ROOM
- 6. STAFF ROOM, RESTROOMS, STORAGE CONTROL ROOM
- 7. EXIT, EMERGENCE HALL VIEW TO GALPON 9

SEQUENCE OF EXPERIENCE



SECTION DIAGRAM

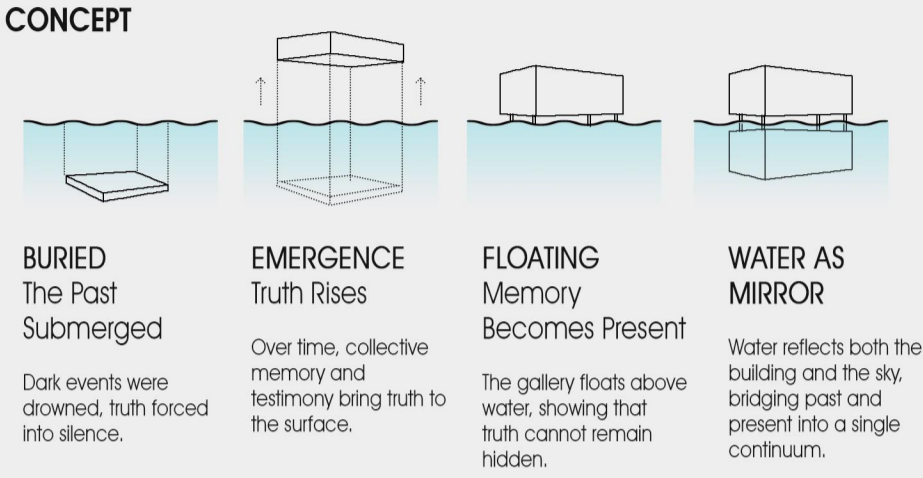


MATERIAL PALETTE

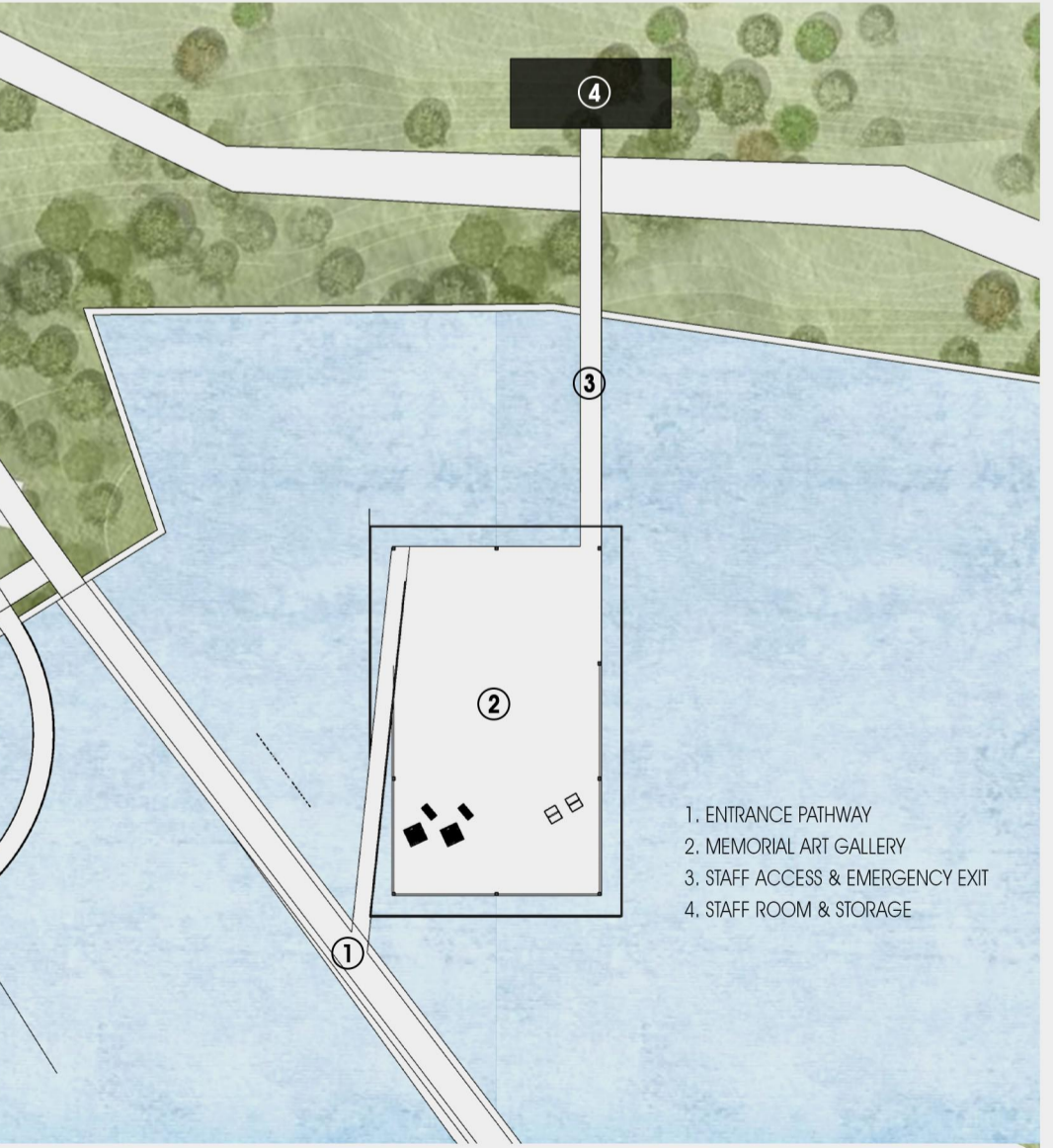
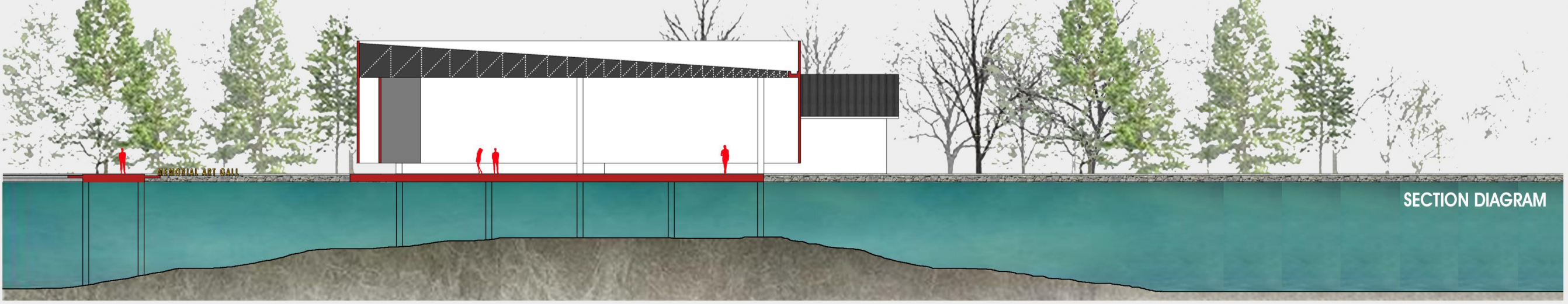
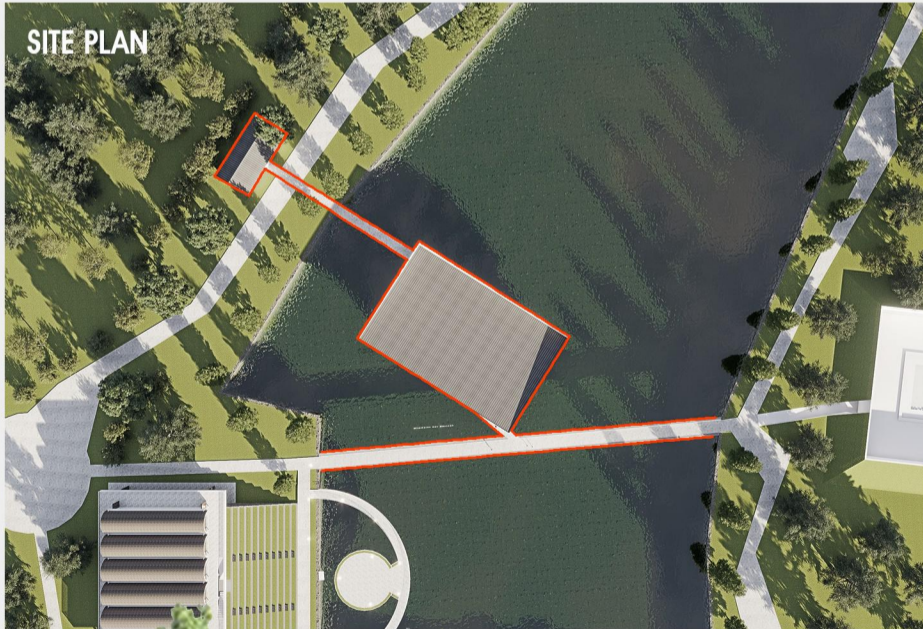


MEMORIAL ART GALLERY

Suspended above the water, the gallery embodies a memory once forced beneath the surface. Inspired by the dark history of Asenal de Tucumán, the water symbolizes silence, erasure, and the deliberate burial of truth. Yet, like a memory that refuses to disappear, the architecture emerges and floats above it—revealing that no matter how deeply a tragedy is hidden, the truth will ultimately resurface. The gallery stands as a vessel of remembrance, transforming suppressed history into a visible and enduring collective memory. versi bahasa



INTERIOR GALLERY



MATERIAL PALETTE

- WHITE PAINT
- WOOD VENEER
- EXPOSED CONCRETE
- DARK GREY TEXTURE WALL



CLASSROOM COMPLEX CONFERENCE ROOM COMPLEX AMPHITHEATER

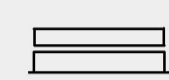
This building serves as a center for learning, discussion, and reflection at Arsenal de Tucumán. The first floor accommodates meetings and dialogue through a transparent conference room that opens to the landscape. The second floor provides a bright and tranquil educational space for learning processes. The front area forms an open amphitheater that blends with nature and water, serving as a gathering place for sharing ideas.

CONCEPT



ARCH & MEMORY

Curved forms, derived from the existing warehouse architecture, serve as symbols of memory and resonating voices.



TRANSPARENCY

Open and transparent spaces for dialogue and human connection.



TOGETHERNESS

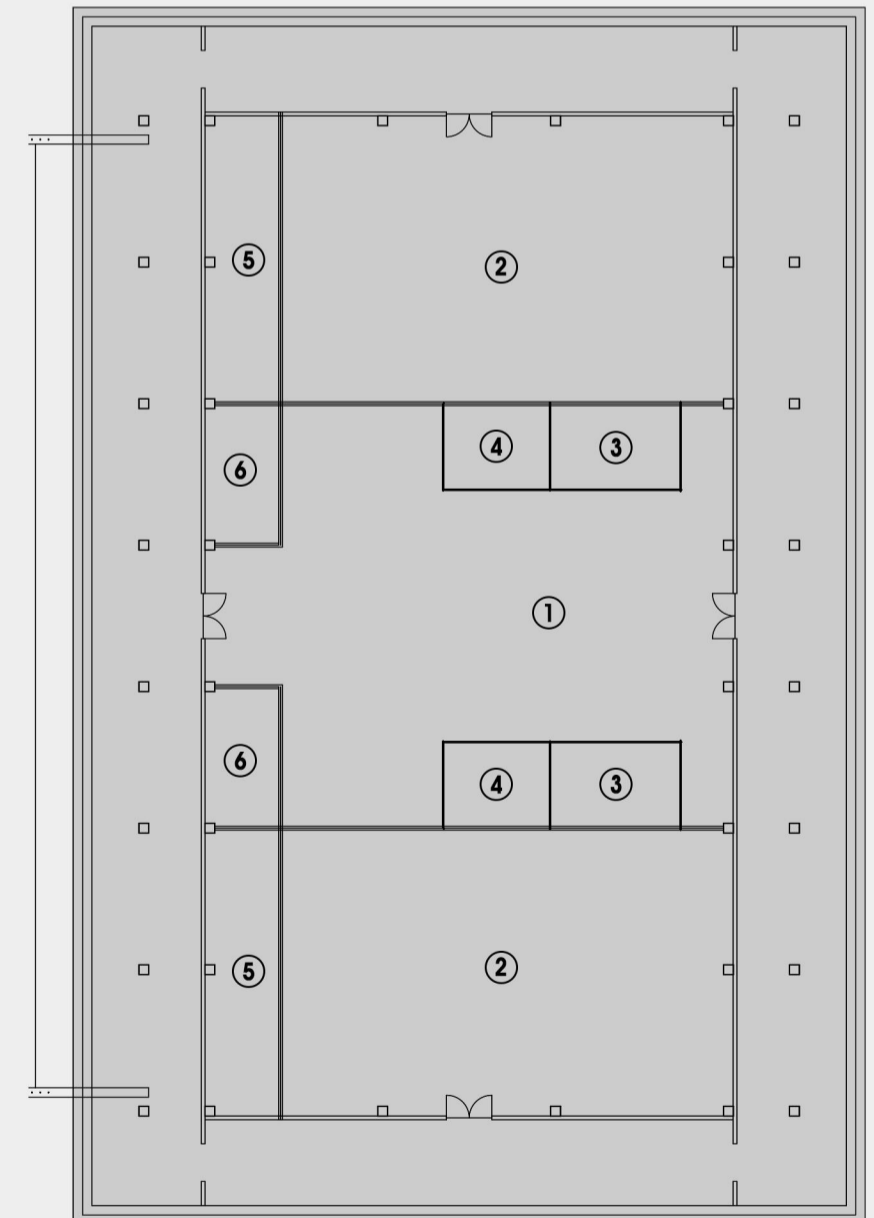
An amphitheater as a public space for gathering, sharing, and remembrance.



WATER & LANDSCAPE

Water and landscape elements enhance a reflective and peaceful atmosphere.

CONFERENCE LAYOUT



- 1. LOBBY
- 2. CONFERENCE ROOM
- 3. SPEAKER'S ROOM
- 4. SERVER ROOM
- 5. BOH/STORAGE
- 6. RESTROOM

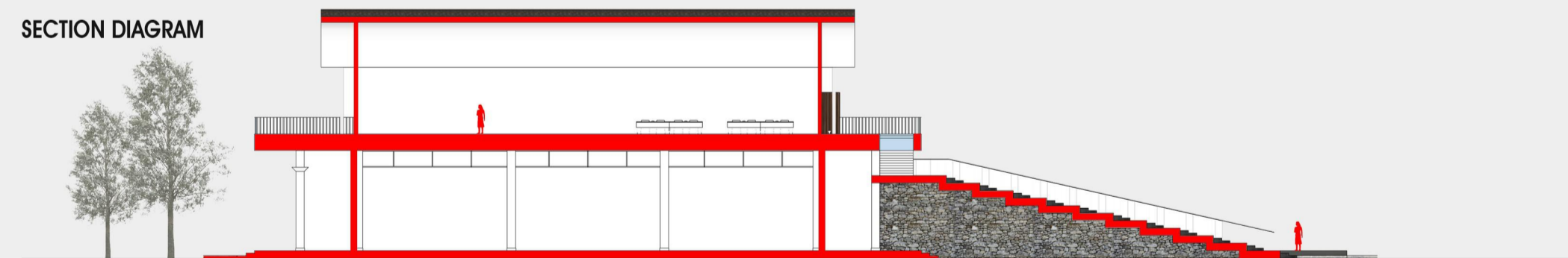
SITE PLAN



ELEVATION



SECTION DIAGRAM



AMPHITHEATER

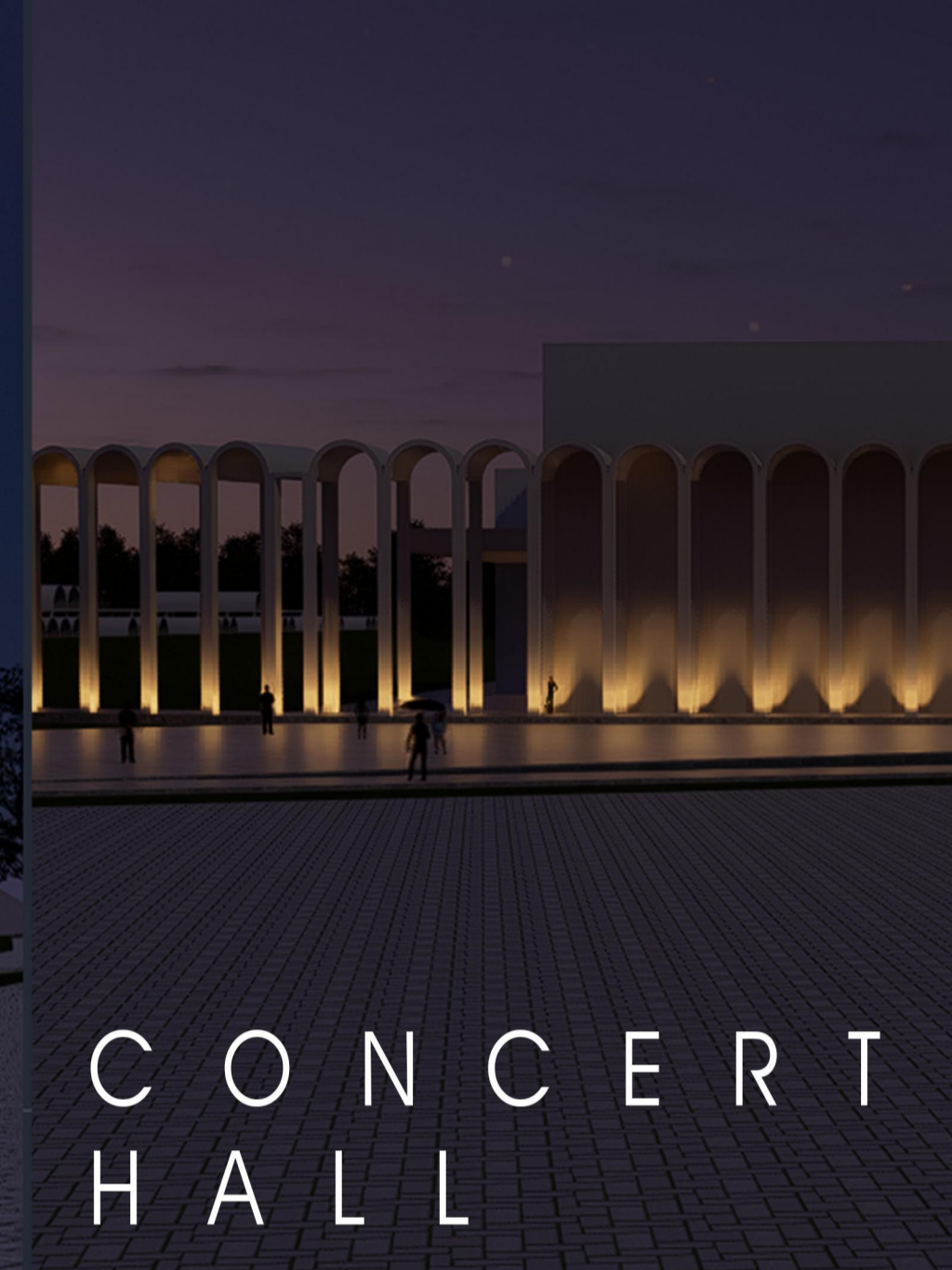


CONFERENCE INTERIOR



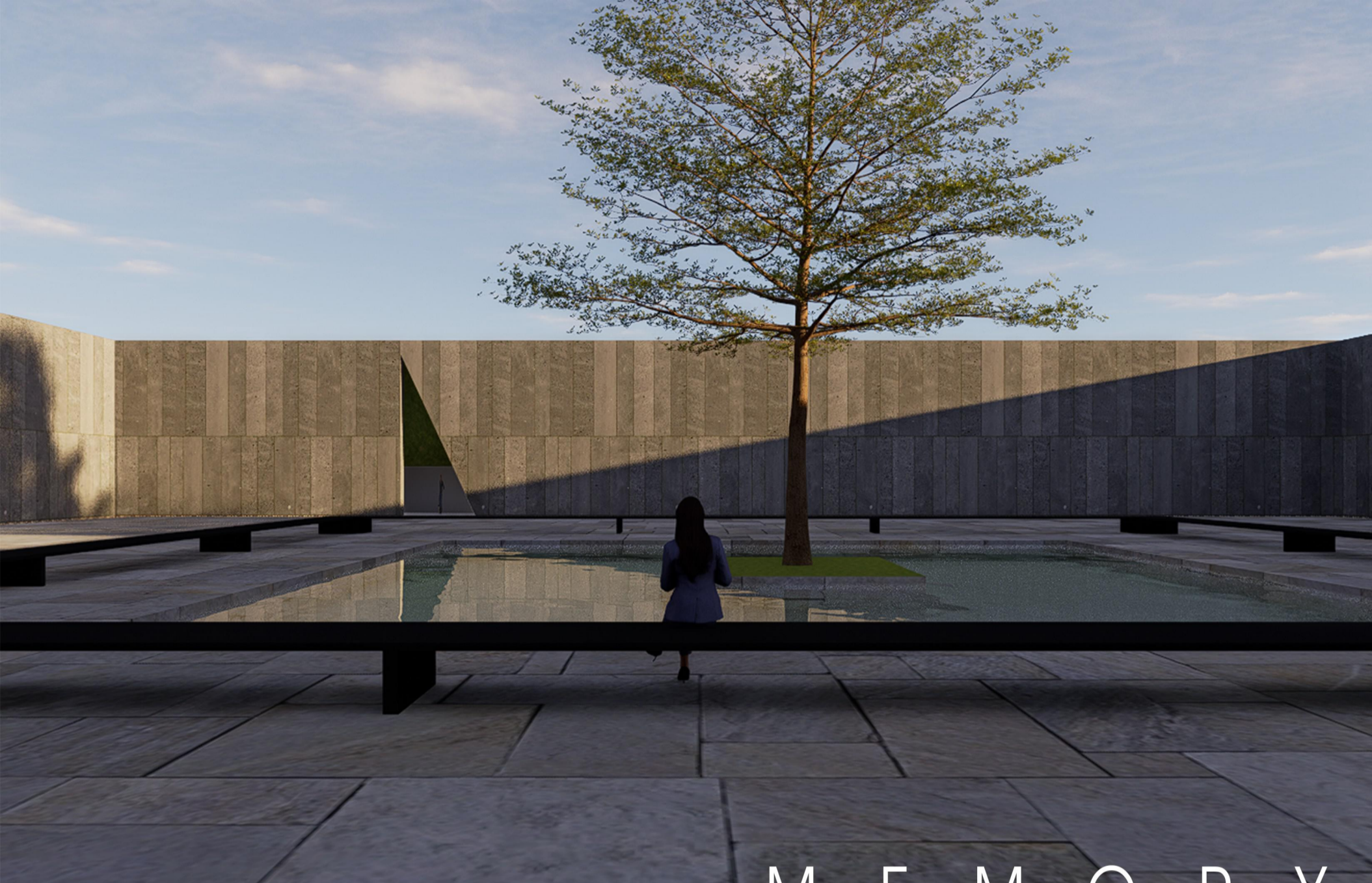
CLASSROOM INTERIOR



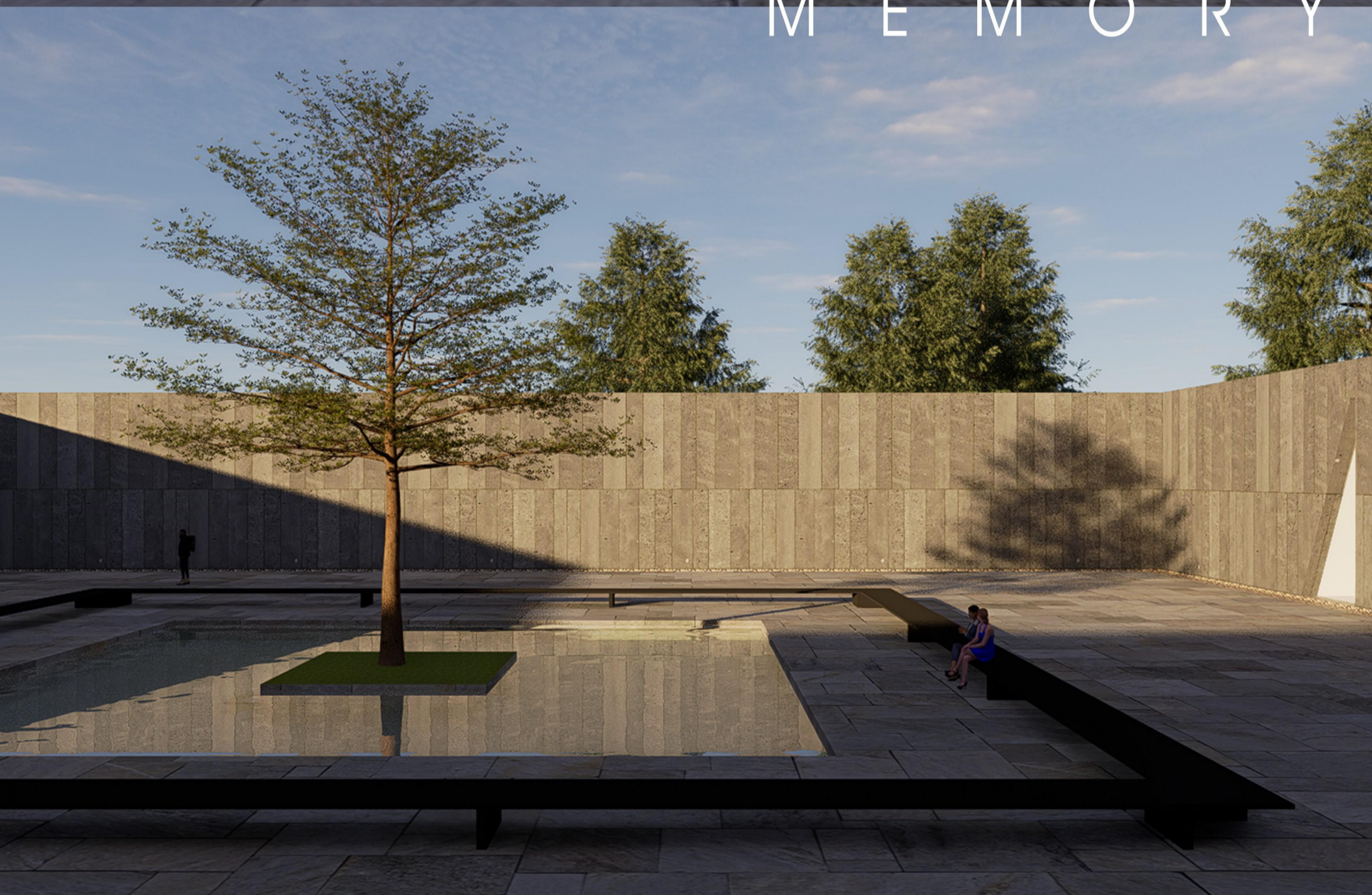


C O N C E R T
H A L L





M E M O R Y



P L A Z A





S H A D E
H O U S E