

VITALIS HOSPITAL

WHERE SILENCE
BEGINS TO MOVE ...



There is a hidden rhythm
within the act of healing...

**IN THE SILENCE OF
MEDICAL SPACES, AN
INVISIBLE PULSE EMERGES,
FELT MORE THAN SEEN,
EXPRESSED THROUGH THE
MOVEMENT AND SEQUENCE
OF SPACES.**

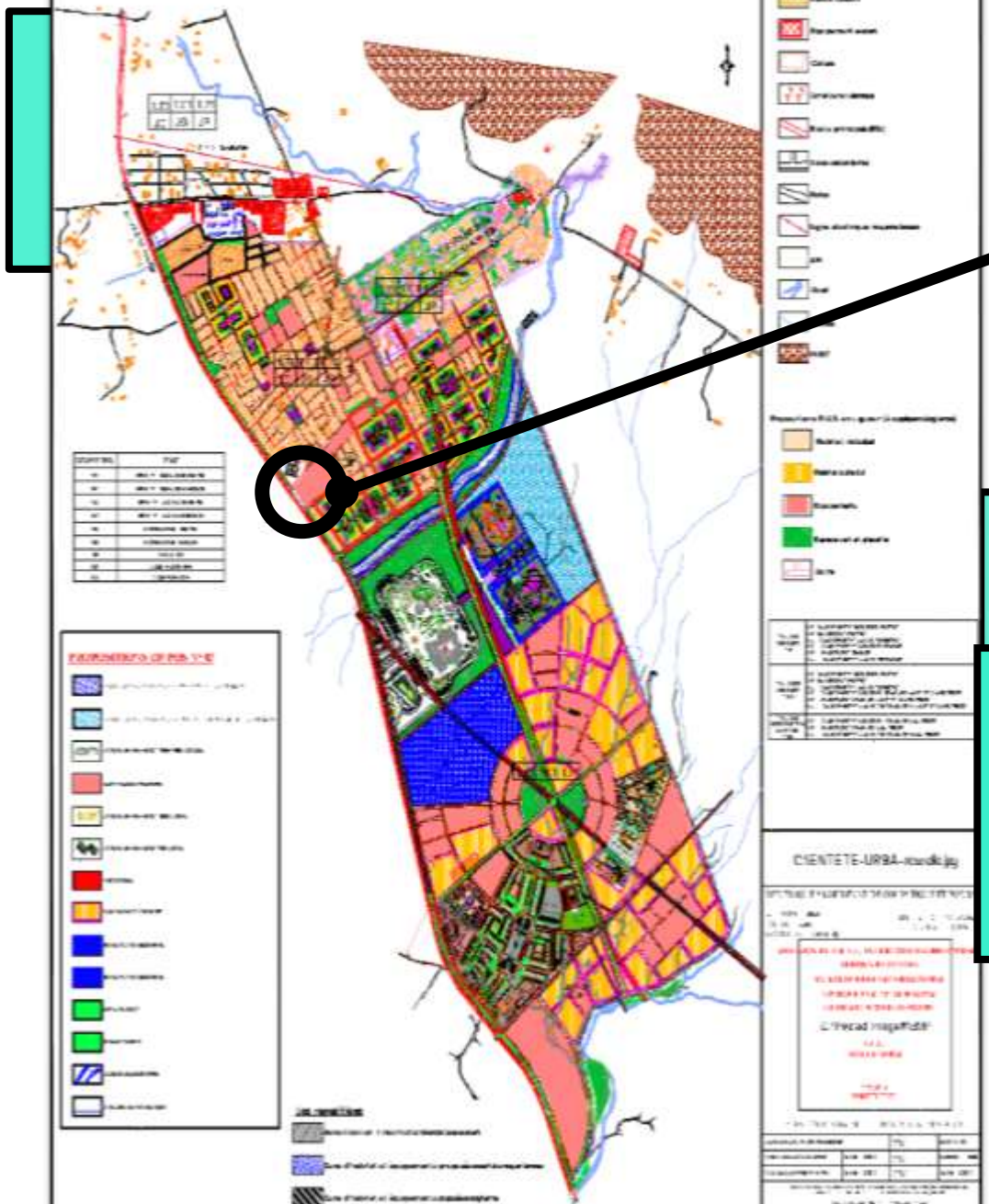
Vitalis Hospital is inspired by the
electrocardiogram (ECG), reshaping the
heartbeat of life into an architectural
structure that guides the healing
experience.

Vitalis
Hospittal

**THE VITALIS PROJECT TRANSLATES
THIS RHYTHM INTO AN ARCHITECTURAL
LANGUAGE, WHERE MOVEMENT BECOMES
SPACE, AND SPACE BECOMES AN
EXTENSION OF LIFE.**

REVISION P.D.A.U INTER-COMMUNAL
TEBESSA-HAMMAM-ET-EL KOUIF-BEKKARIA-BOULHAF D'YR
ACL BOULHAF D'YR

- LEGENDE
- Zone de planification urbaine
 - Zone d'habitat
 - Zone d'activités
 - Zone de services
 - Zone de commerce
 - Zone de bureaux
 - Zone de loisirs
 - Zone de verdure
 - Zone de protection
 - Zone de transit
 - Zone de transport
 - Zone de circulation
 - Zone de stationnement
 - Zone de voirie
 - Zone de drainage
 - Zone de gestion des déchets
 - Zone de gestion de l'eau
 - Zone de gestion de l'énergie
 - Zone de gestion des risques
 - Zone de gestion de la sécurité
 - Zone de gestion de la culture
 - Zone de gestion de l'économie
 - Zone de gestion de l'environnement
 - Zone de gestion de la santé
 - Zone de gestion de la justice
 - Zone de gestion de la police
 - Zone de gestion de la justice pénale
 - Zone de gestion de la justice civile
 - Zone de gestion de la justice commerciale
 - Zone de gestion de la justice administrative
 - Zone de gestion de la justice sociale
 - Zone de gestion de la justice familiale
 - Zone de gestion de la justice pénale
 - Zone de gestion de la justice civile
 - Zone de gestion de la justice commerciale
 - Zone de gestion de la justice administrative
 - Zone de gestion de la justice sociale
 - Zone de gestion de la justice familiale



Site
Analysis

The site is located along the RN16 national road, a strategic axis connecting four provinces, giving it strong urban presence and high regional accessibility.

It is embedded within a multi-layered urban context; bounded to the south by a university hub, to the north by a religious space, to the west by a main road, and opening to an existing urban fabric to the east, forming a point of convergence between educational, spiritual, and urban functions.

This intersection creates an ideal setting for a healthcare project that redefines the relationship between the human being, the city, and movement.



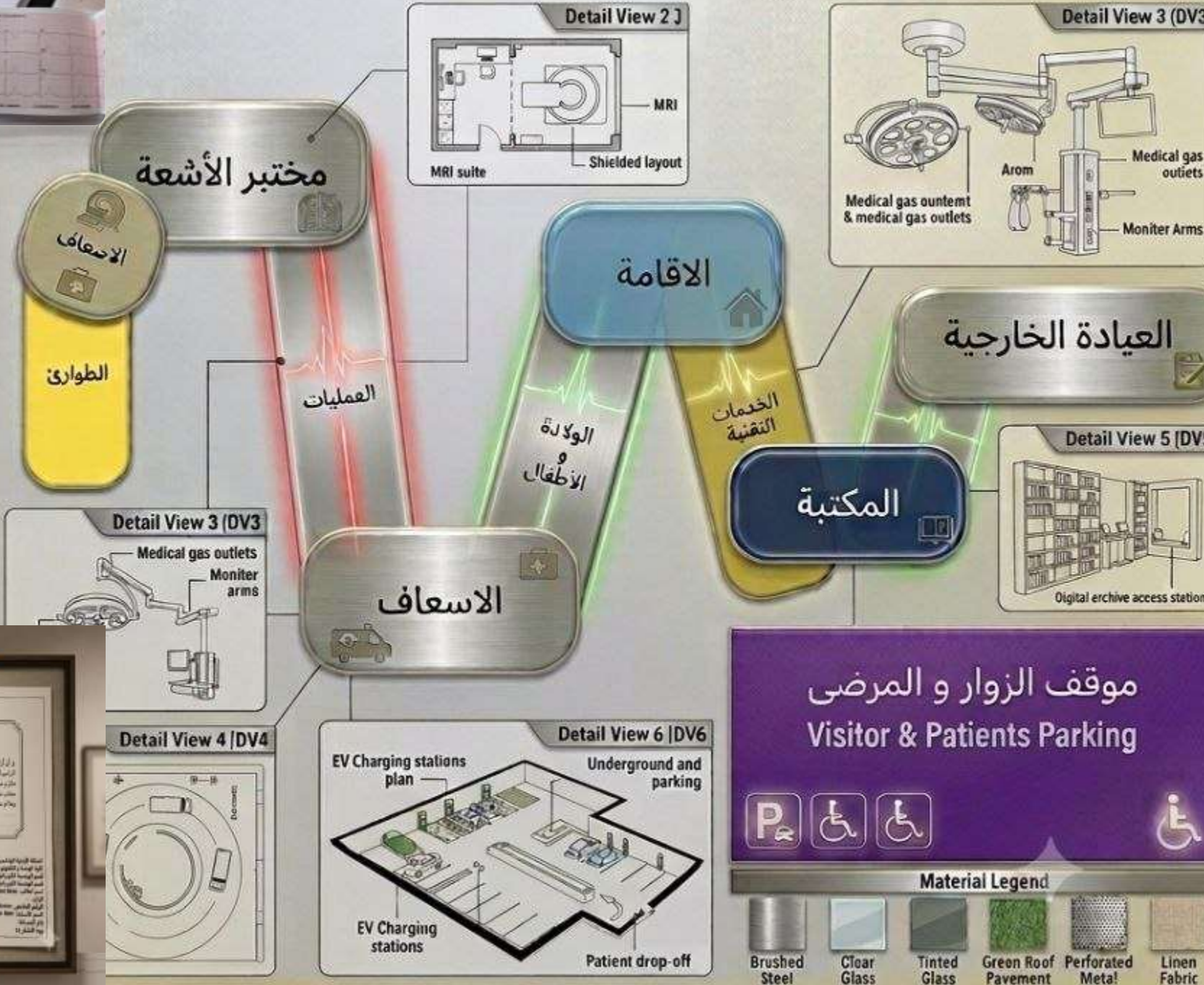
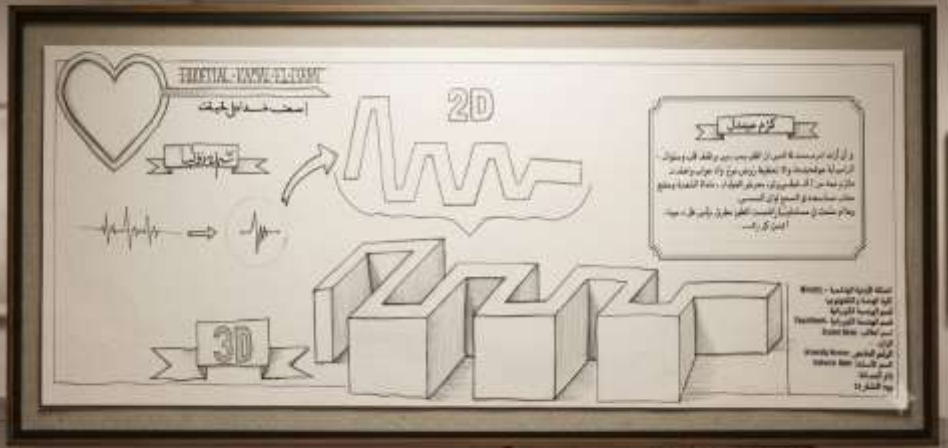
The project is conceived as a future hospital based on flexibility and mobility, allowing it to be dismantled and reassembled in different locations as needed, making it an effective solution for health emergencies and disaster situations. Its modular system and single-storey configuration (RDC) enhance horizontal circulation, accessibility, and functional distribution, ensuring high operational efficiency and rapid response. This approach is further strengthened by an environmental dimension that reduces waste and enhances adaptability to different contexts.



فكرة المشروع

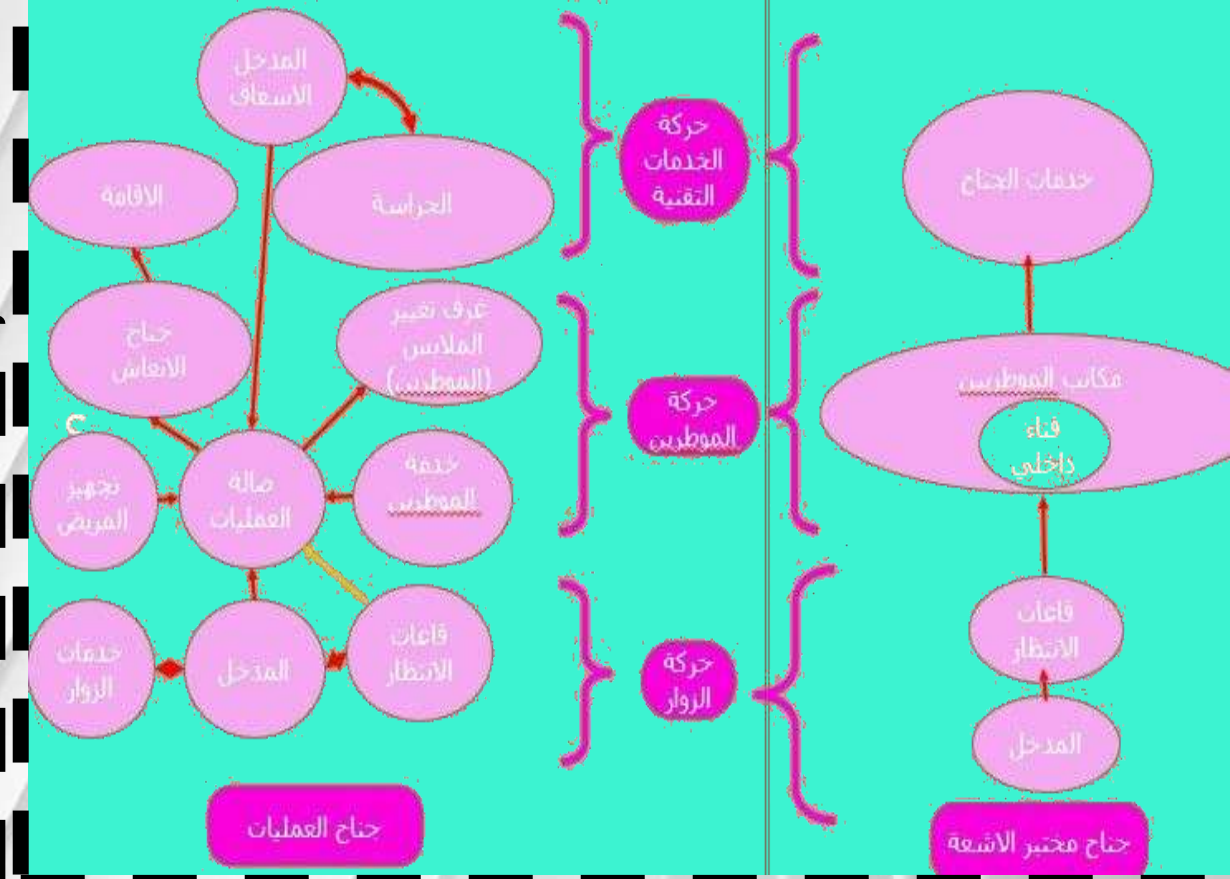
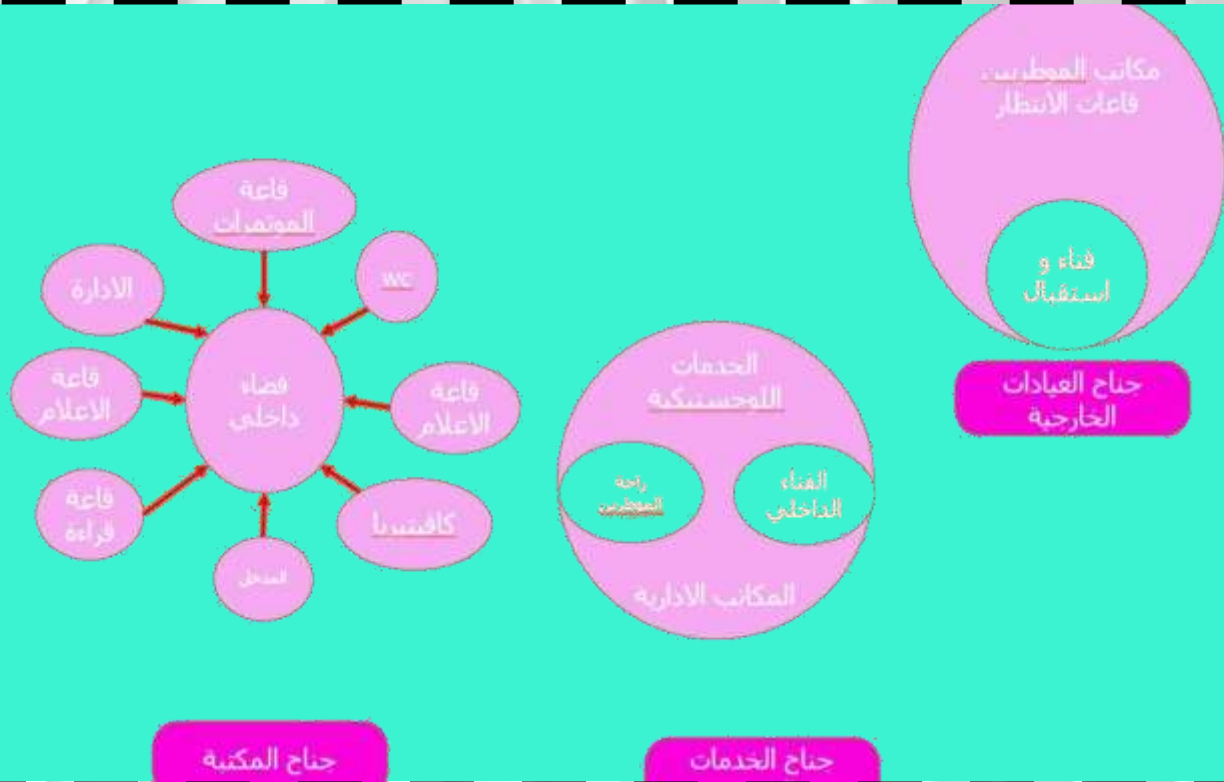


The electrocardiogram (ECG) is translated into an independent functional wing system, where each line represents a specific function within the hospital, all within a unified architectural rhythm.



موقف الزوار و المرضى
Visitor & Patients Parking

Icons: P, wheelchair, wheelchair



The heartbeat is transformed into architecture, where the hospital's functions are embodied within an organic composition that expresses movement, life, and healing.

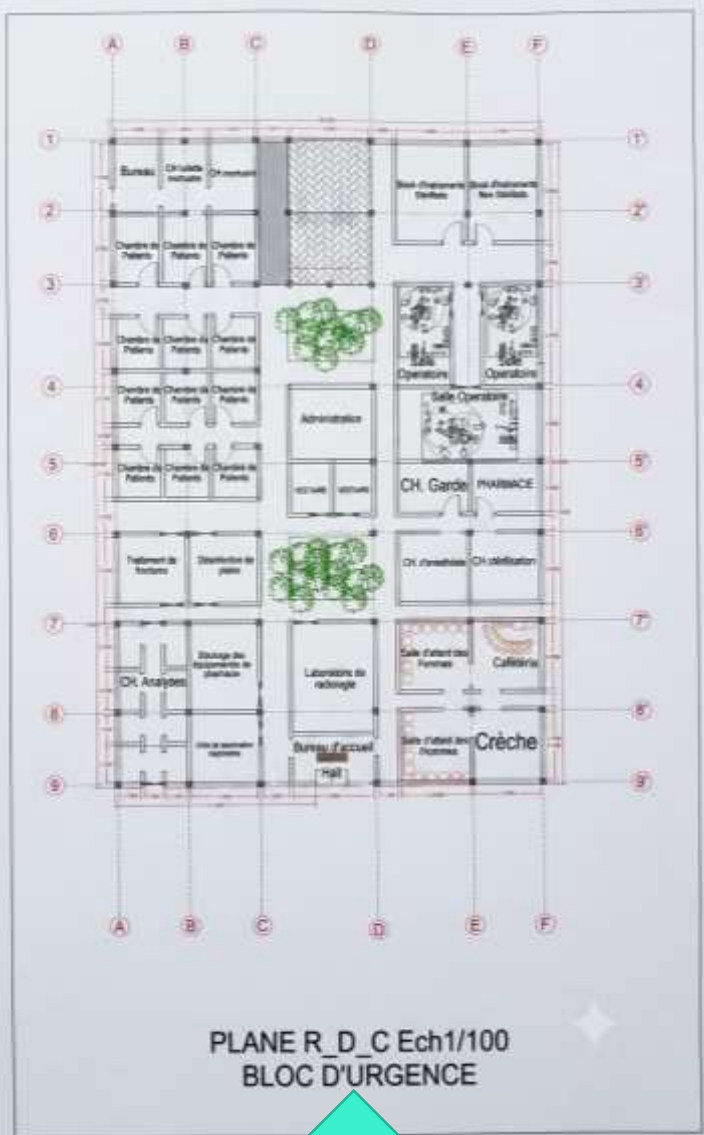


Each wing was developed according to its specific functional requirements, allowing similar spaces to be grouped into clear and specialized units. This organization enhances operational efficiency, facilitates circulation, and strengthens the integration between the different hospital departments.

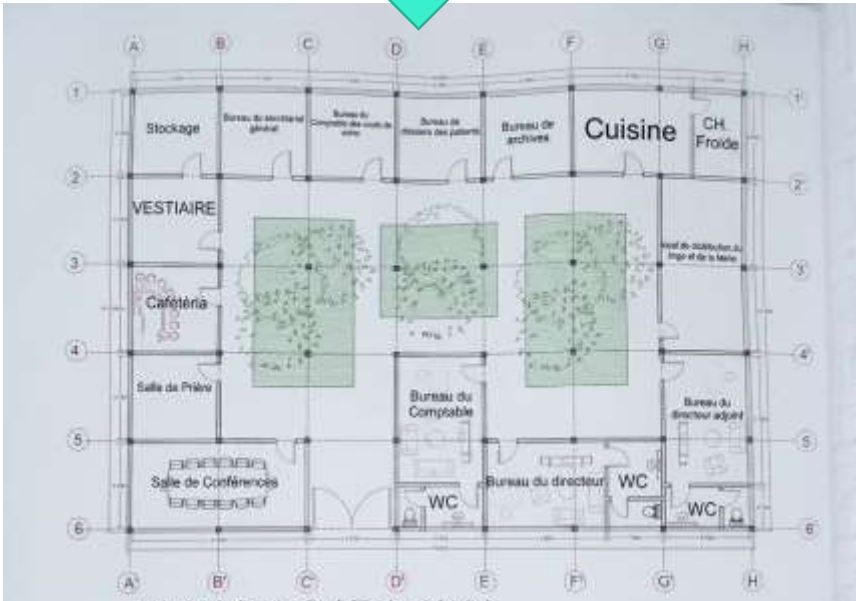


THE PROJECT IS BASED ON A MODULAR SYSTEM COMPOSED OF FREIGHT-CONTAINER UNITS THAT CAN BE DISMANTLED AND REASSEMBLED. A SINGLE-STOREY CONFIGURATION (RDC) WAS ADOPTED TO FACILITATE ASSEMBLY, EXPANSION, AND RELOCATION, PROVIDING MAXIMUM FLEXIBILITY AND ADAPTABILITY TO FUTURE NEEDS AND CHANGING CONTEXTS.

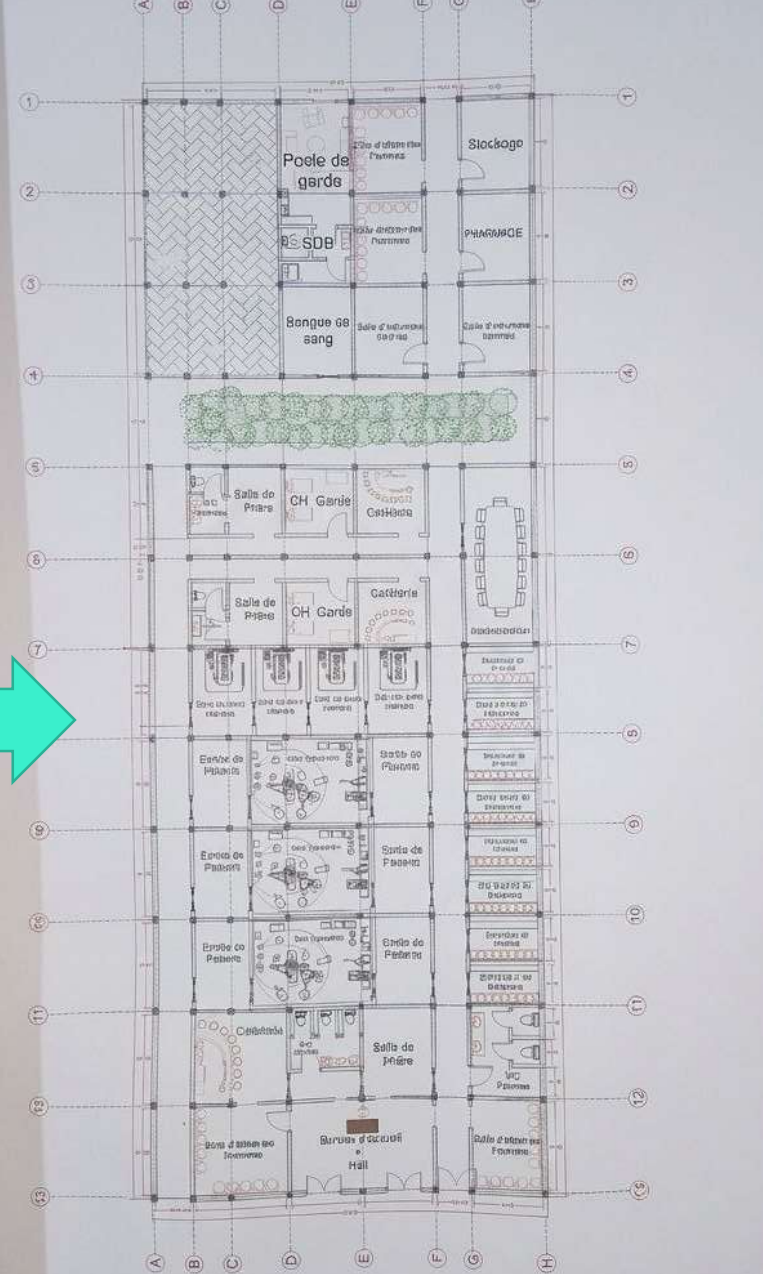




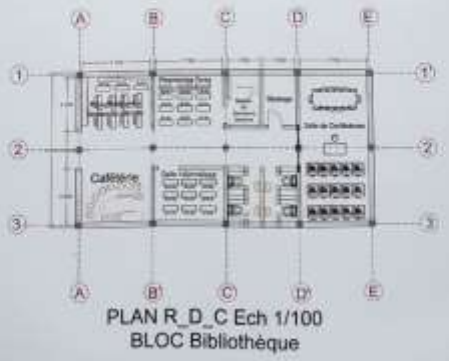
This level brings together the hospital's technical infrastructure and knowledge spaces, ensuring operational efficiency while providing an environment dedicated to learning, research, and knowledge exchange.

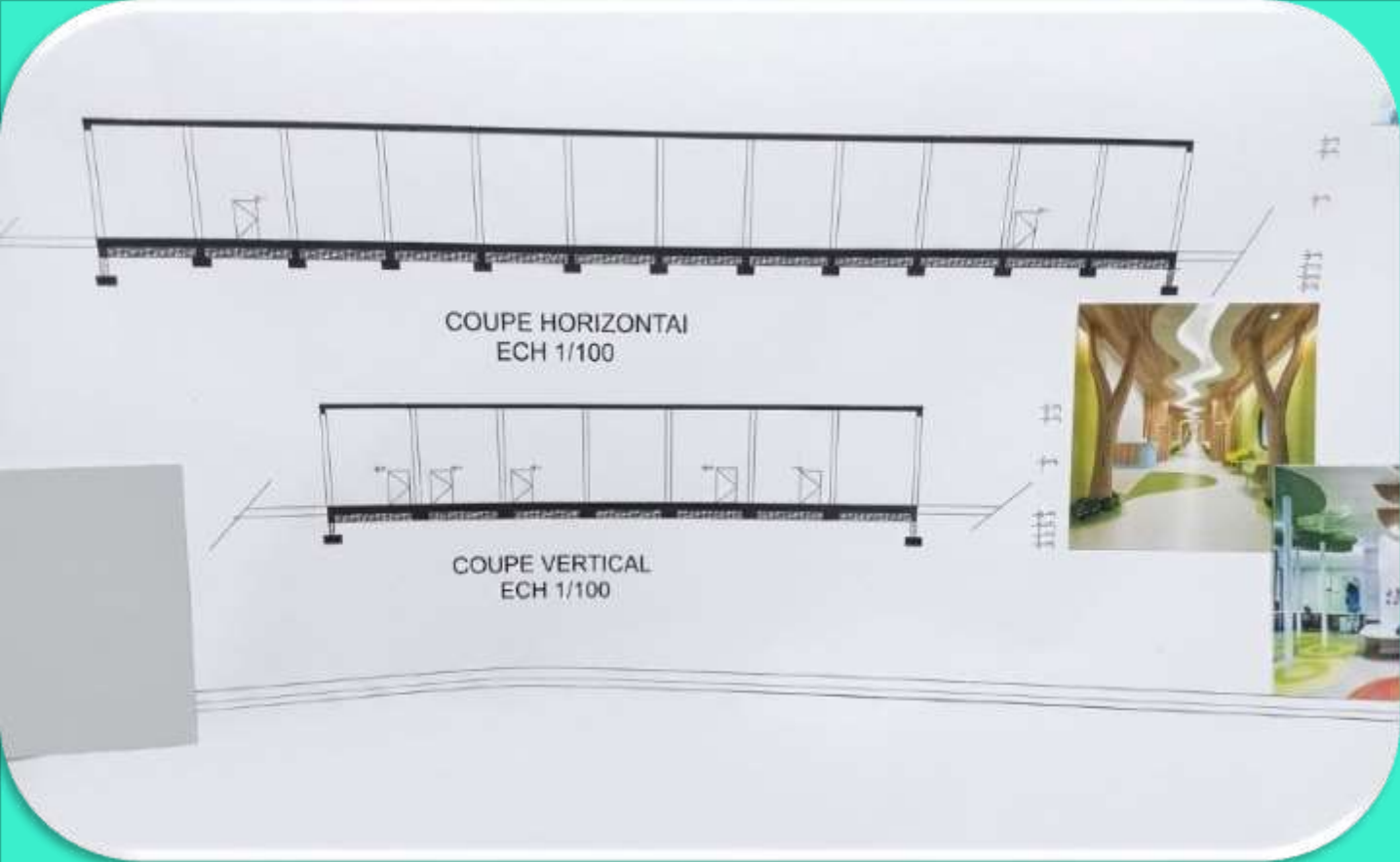


The surgical wing is organized through a precise functional sequence that ensures medical efficiency and smooth circulation between the different specialized units.



The Emergency Department is designed to ensure a rapid and efficient response to critical cases through clear circulation and direct connectivity with the hospital's essential medical units.





The façades and sections reveal the identity and functional organization of Vitalis through an architectural language that expresses movement, fluidity, and connectivity between the different wings.



THANK YOU ...

*In Vitalis, the heartbeat becomes architecture,
and architecture becomes a space that
embraces life and healing.*

mahmoudiasma007@gmail.com

