

LIMINAL

COASTAL MUSEUM OF CULTURE,
LANDSCAPE AND TIME.

THE PROJECT IS DRIVEN BY THE
CONCEPT OF LIMINALITY – THE
STATE OF BEING IN TRANSITION
BETWEEN TWO CONDITIONS.
THIS IDEA IS TRANSLATED INTO
ARCHITECTURE THROUGH A
SEQUENCE OF SPACES THAT
EMPHASIZE THRESHOLDS,
AMBIGUITY, AND GRADUAL
TRANSFORMATION.

LOCATION

NORTH CYPRUS, KYRENIS

YEAR

2026

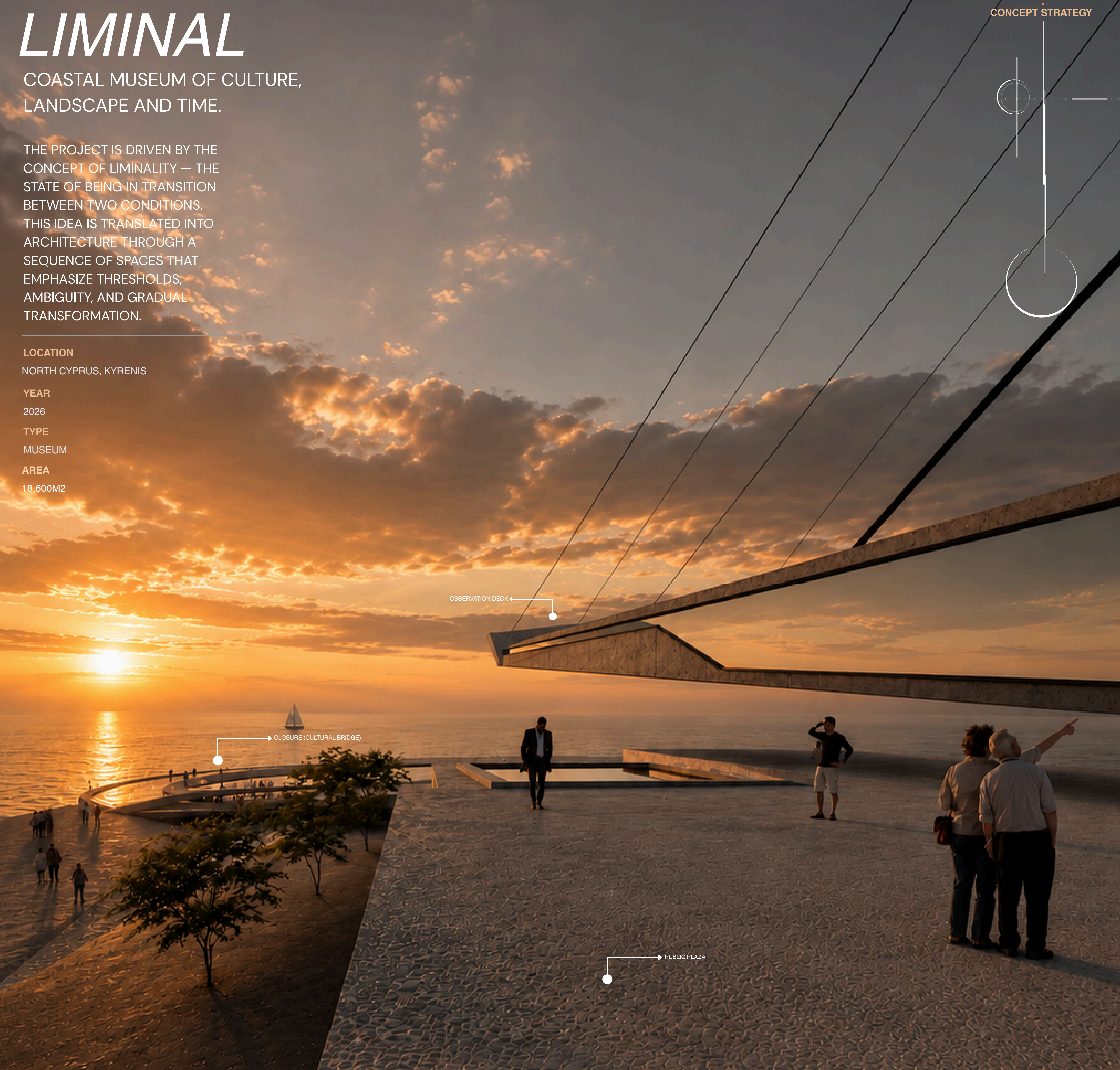
TYPE

MUSEUM

AREA

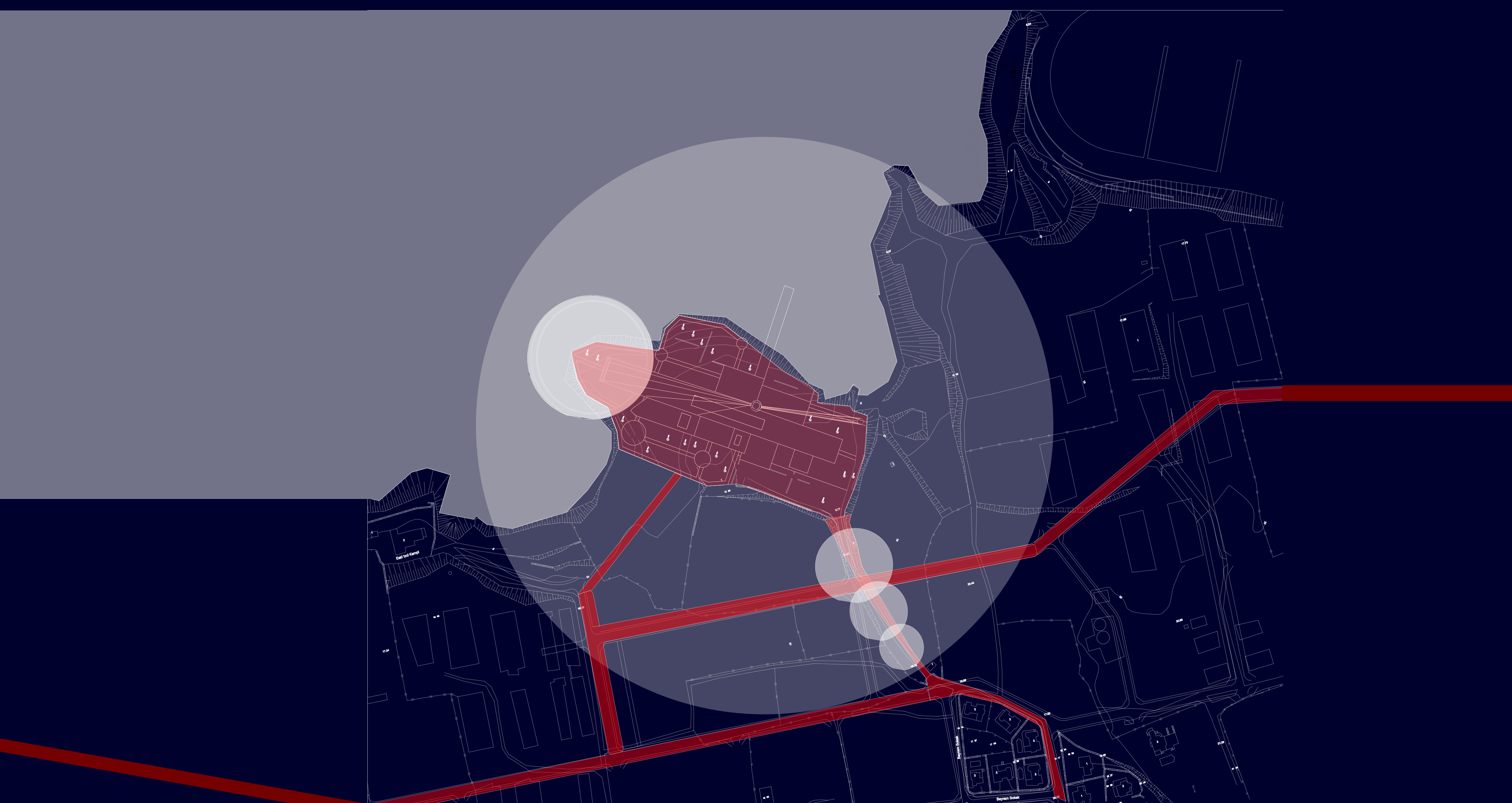
18,600M2

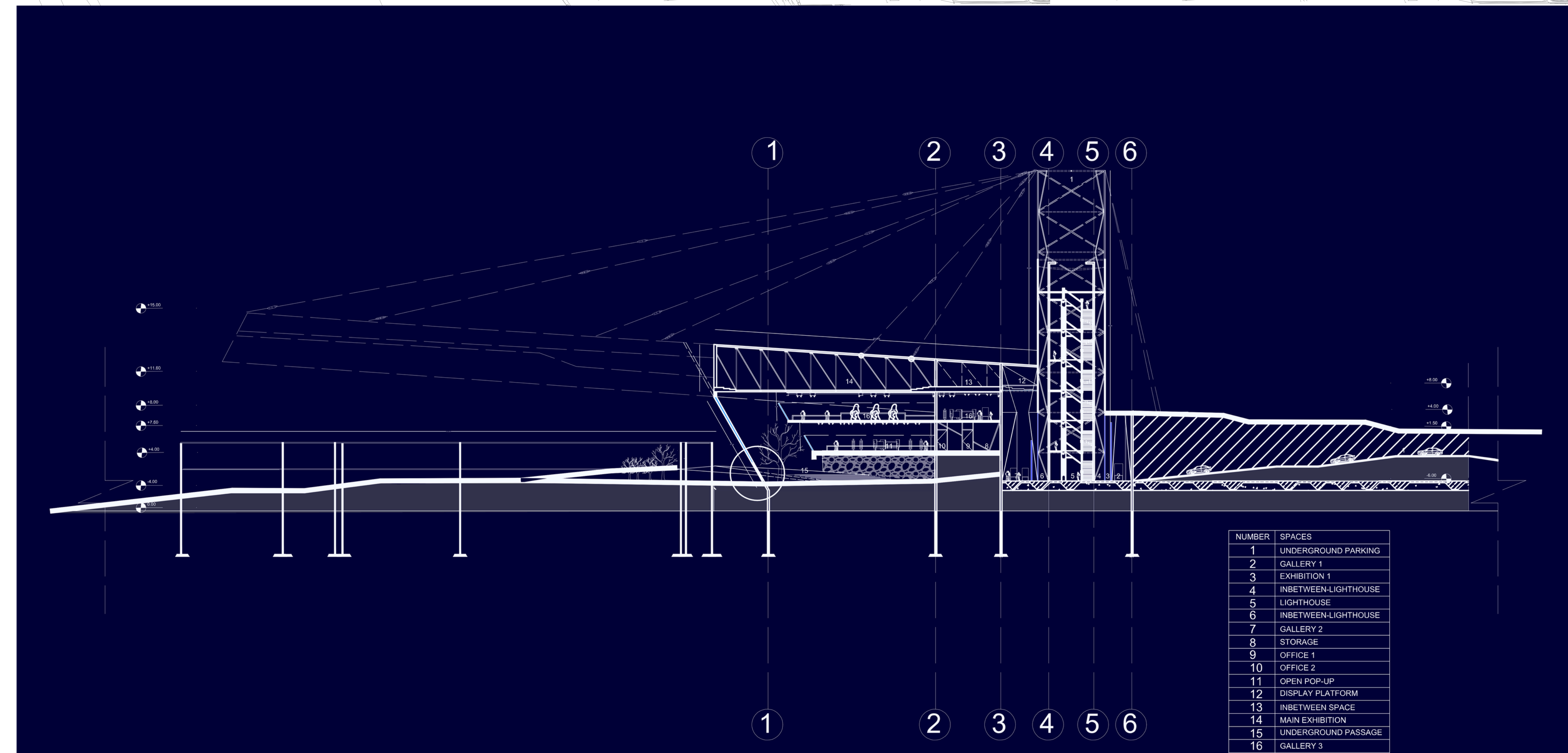
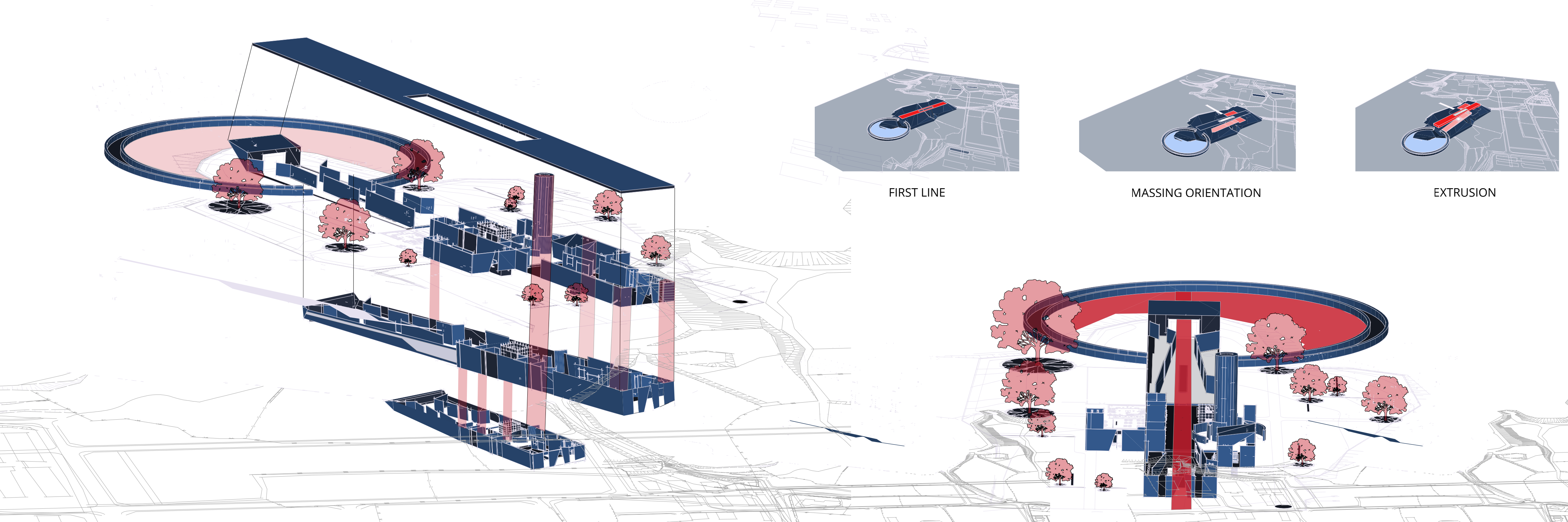
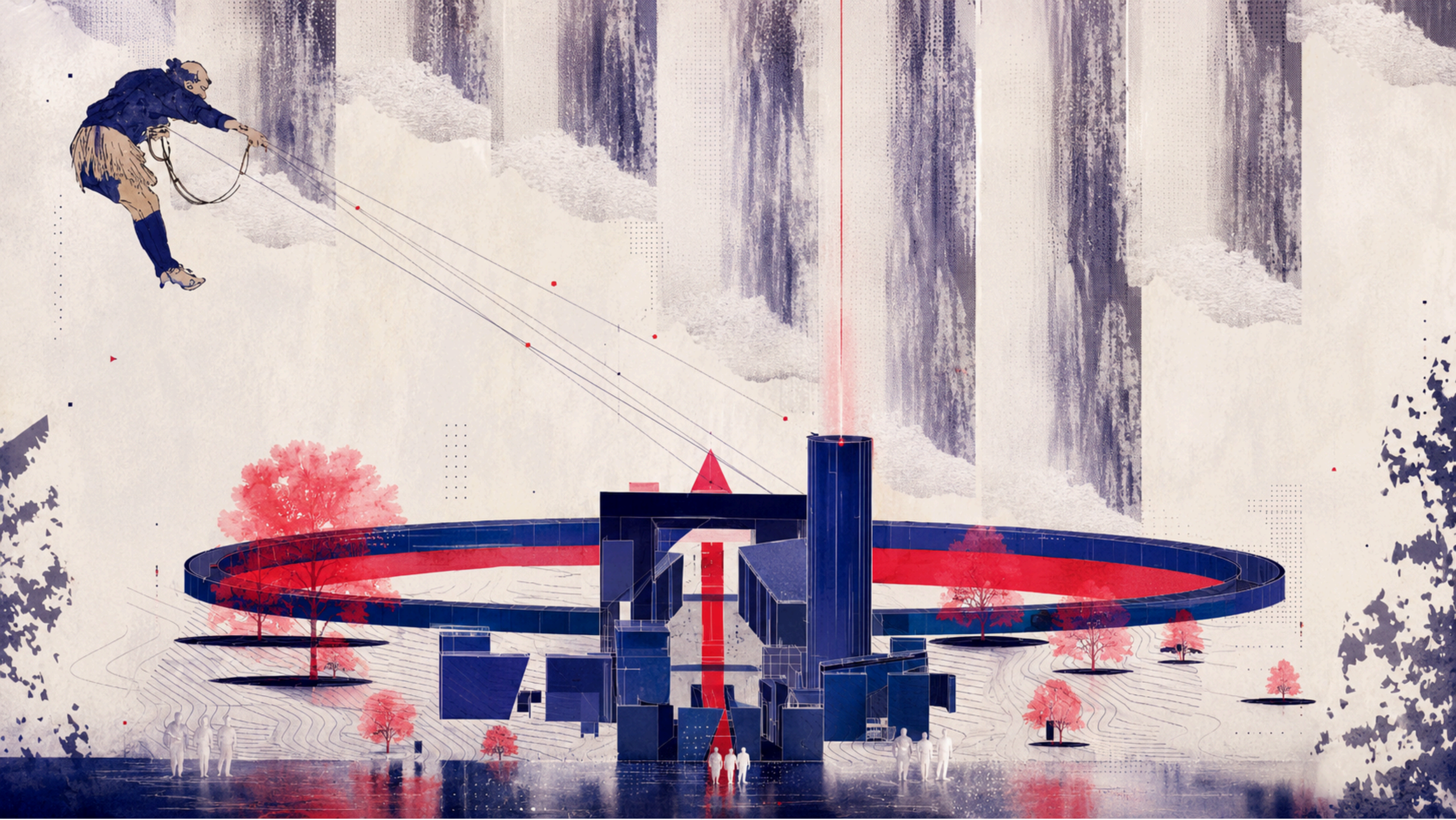
CONCEPT STRATEGY

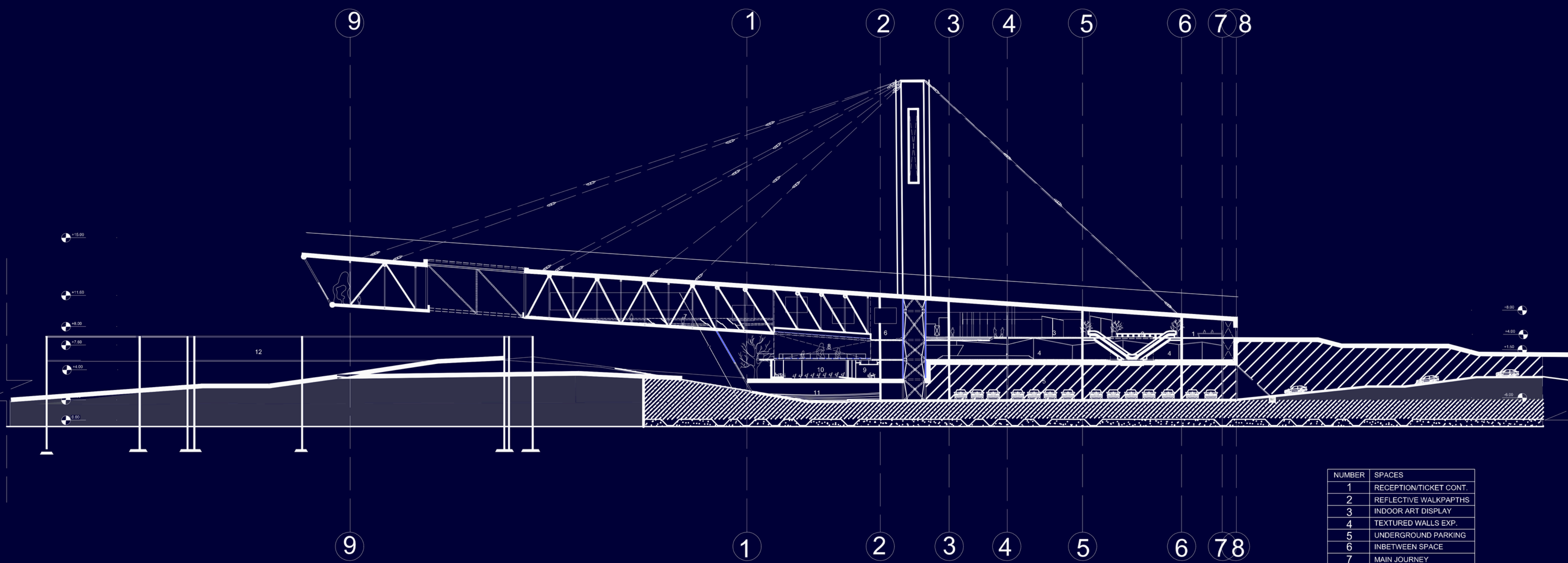




The project is driven by the concept of liminality — the state of being in transition between two conditions. This idea is translated into architecture through a sequence of spaces that emphasize thresholds, ambiguity, and gradual transformation.

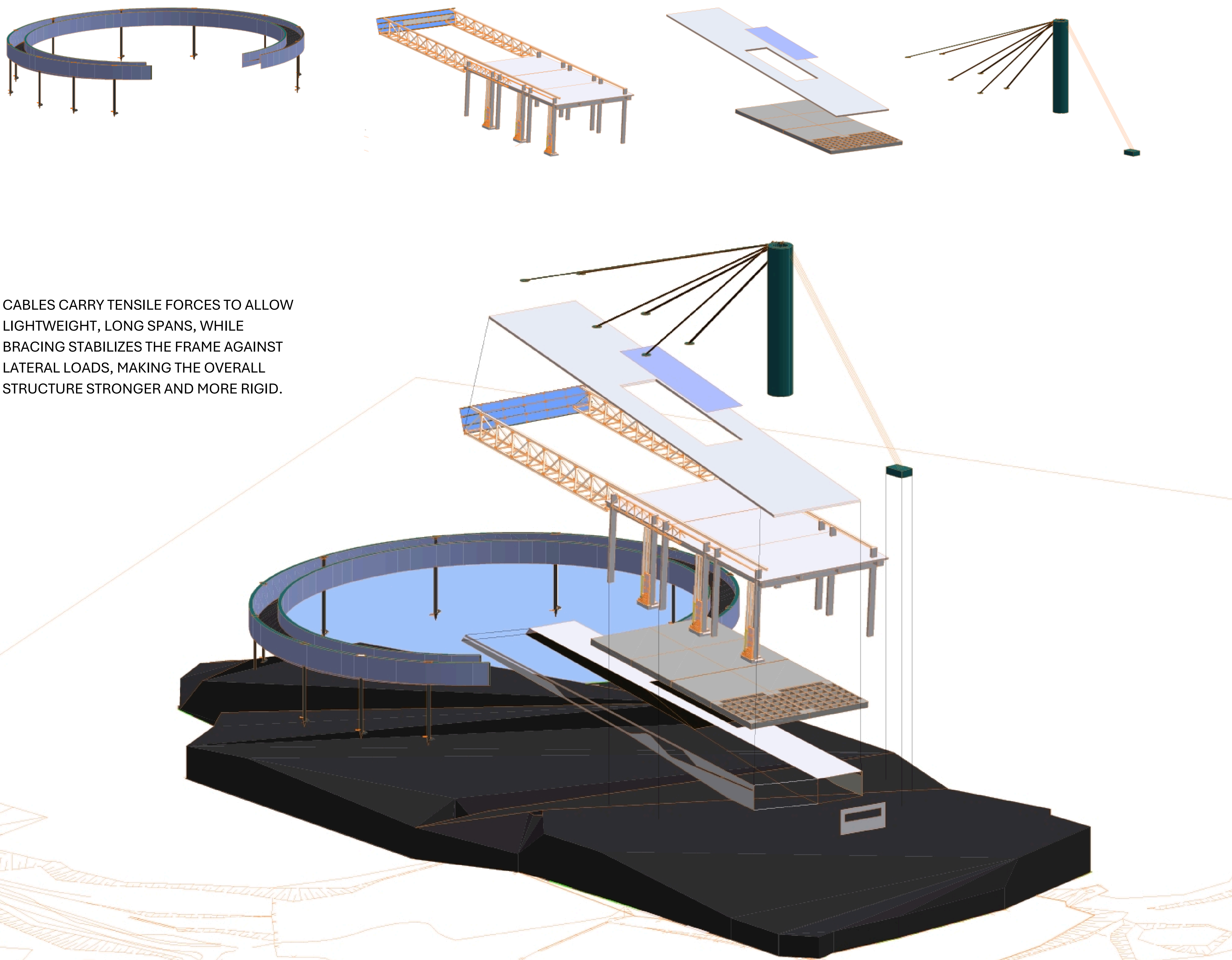






NUMBER	SPACES
1	RECEPTION/TICKET CONT.
2	REFLECTIVE WALKPATHS
3	INDOOR ART DISPLAY
4	TEXTURED WALLS EXP.
5	UNDERGROUND PARKING
6	IN-BETWEEN SPACE
7	MAIN JOURNEY
8	OPEN GALLERY
9	SECURITY
10	MEET & GREET
11	UNDERGROUND PLAZA
12	CLOSURE

CABLES CARRY TENSILE FORCES TO ALLOW LIGHTWEIGHT, LONG SPANS, WHILE BRACING STABILIZES THE FRAME AGAINST LATERAL LOADS, MAKING THE OVERALL STRUCTURE STRONGER AND MORE RIGID.







The spatial organization is based on a linear and sequential progression, guiding visitors through a series of controlled transitions. Movement is carefully designed to create a narrative experience

