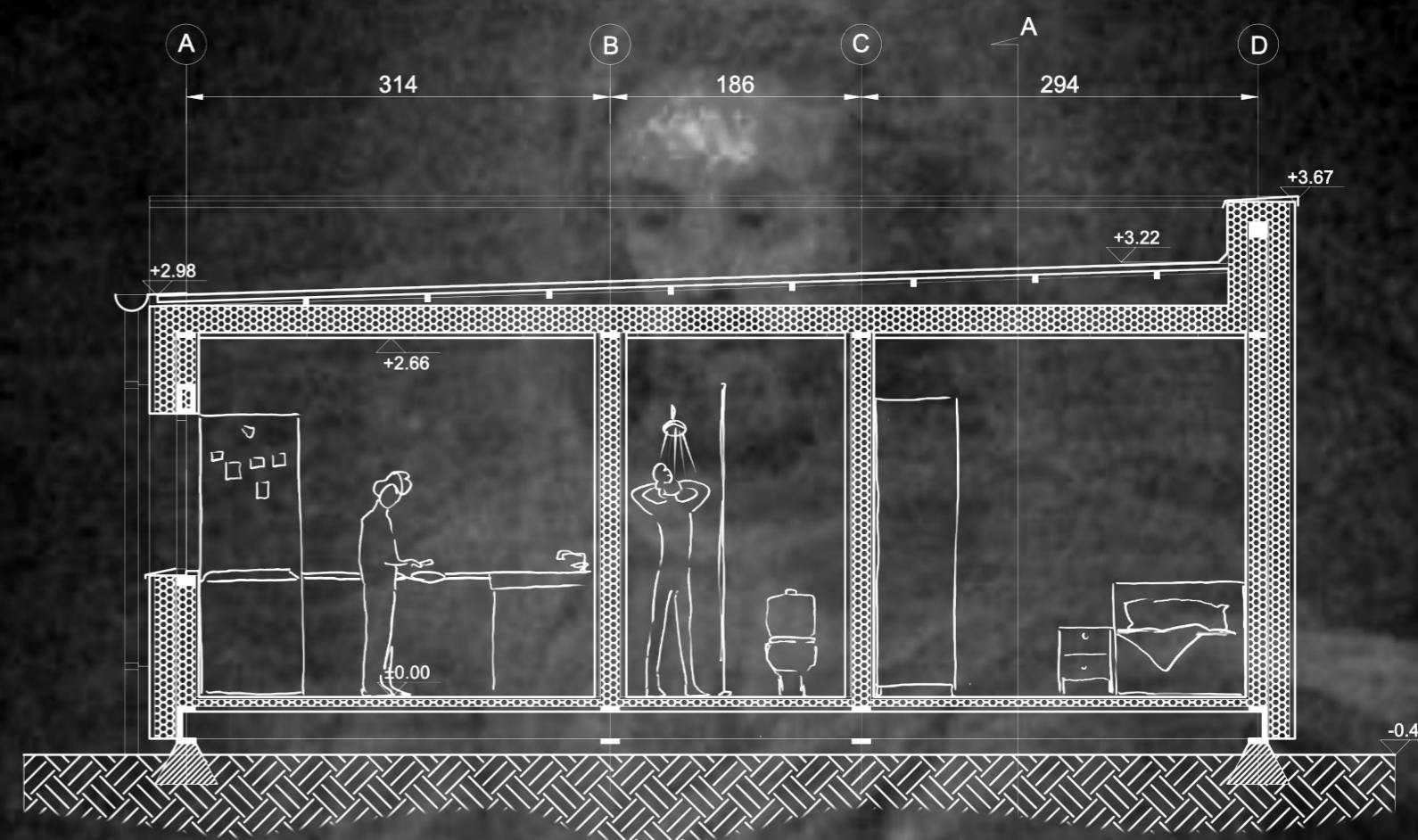
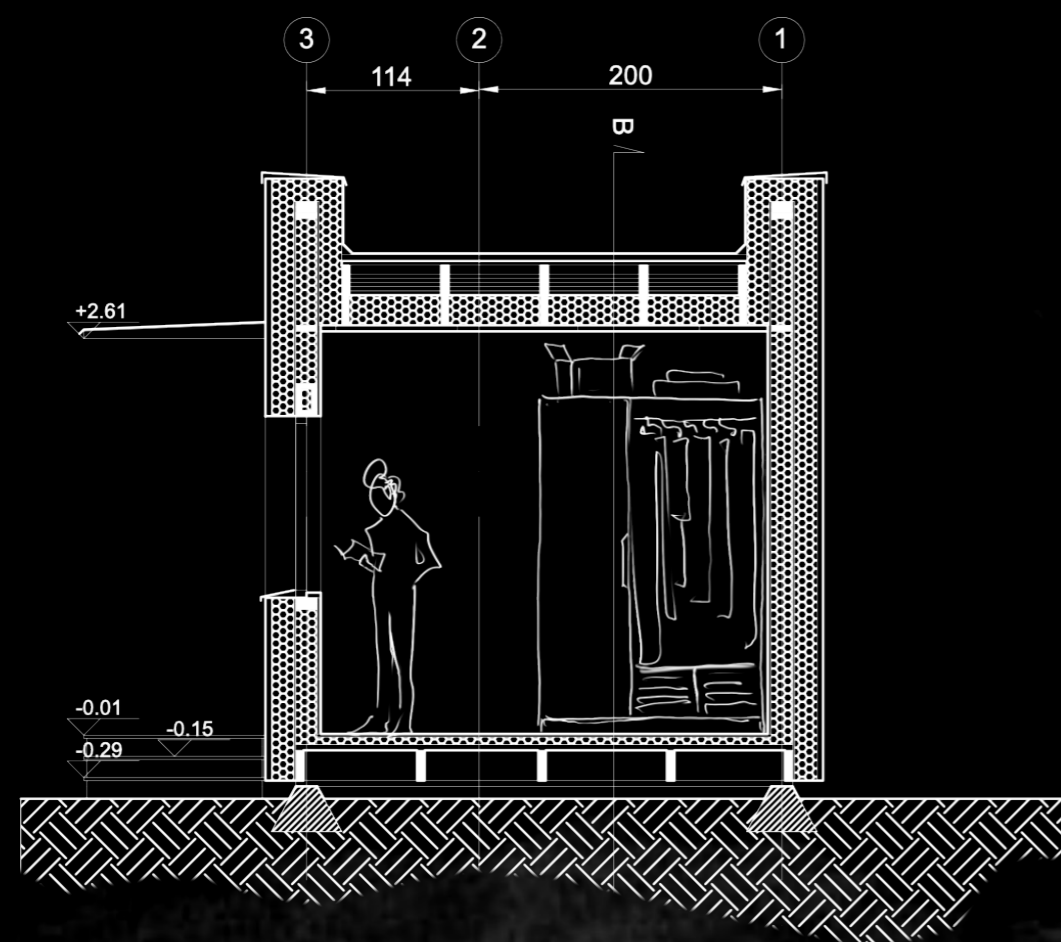


TINY HOUSE FLOOR PLAN 1:50



SECTION B-B 1:50



SECTION A-A 1:50

Residential House:

Despite its compact size, the interior provides all essential functions required for independent living. The layout separates everyday activities from the more private sleeping area, while the bathroom acts as a spatial buffer between the two zones.

Each unit includes a kitchenette with a stove and refrigerator, a shower, a workspace, storage furniture, and a standard bed. The house offers everything necessary for a comfortable and self-sufficient daily routine.

The structure is elevated approximately 40 centimetres above ground level. This improves protection from moisture, visually emphasizes the individuality of the dwelling, and reinforces the feeling of having a personal home.

The purpose of the residential unit is not simply to provide shelter but to create a genuine sense of home, safety, dignity, and stability. It is a place where residents can regain privacy, rebuild daily routines, and take the first steps toward an independent future.

