

Psychological and Social Support Centre:

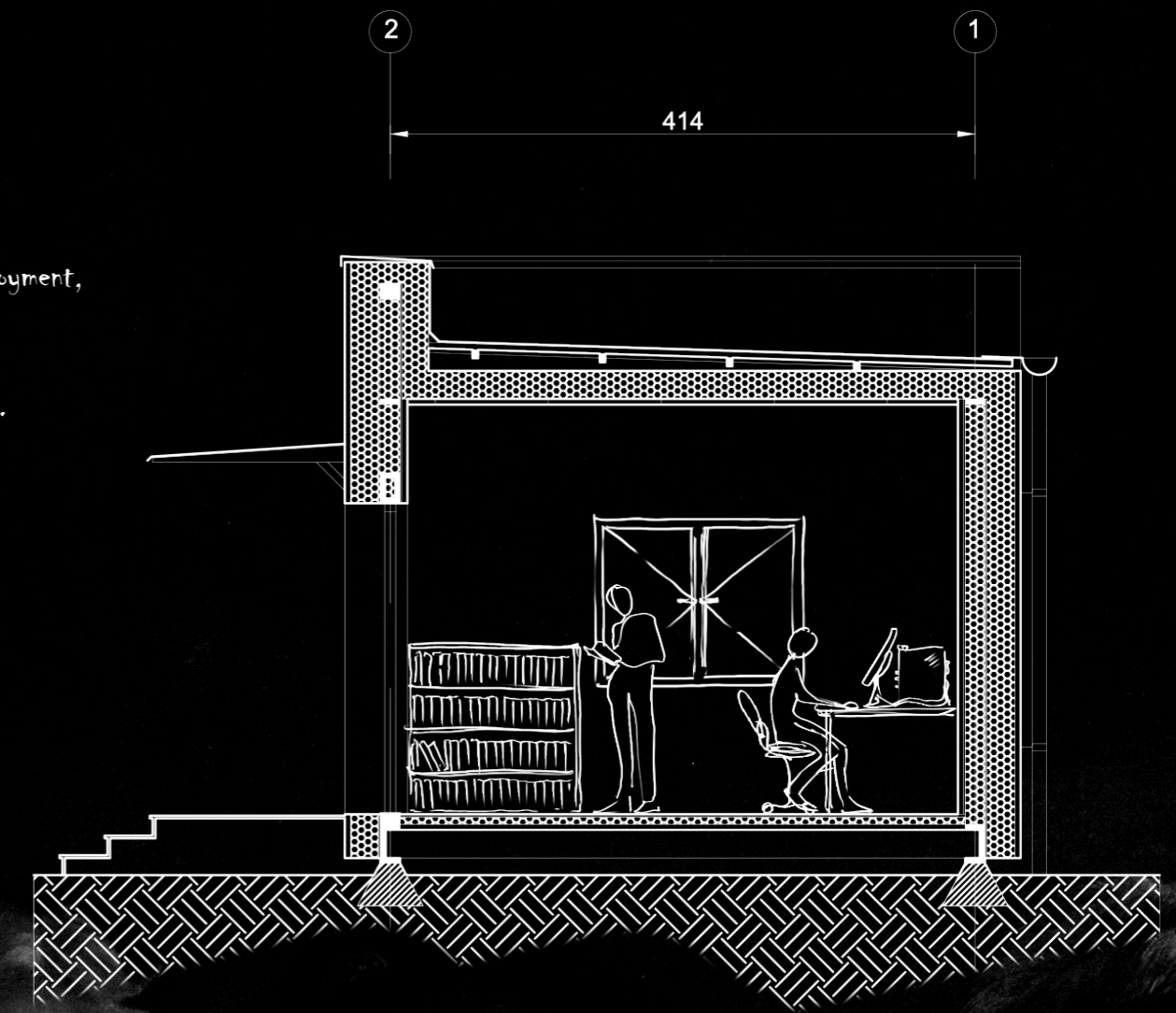
The interior is divided into two separate offices: one for a psychologist and one for a social advisor. A centrally positioned restroom provides additional functional and acoustic separation between the two spaces.

Psychological support focuses on addressing trauma, social isolation, emotional distress, and the long-term effects of homelessness. The social advisor assists residents with practical matters such as obtaining documents, finding employment, accessing public services, and planning the transition to independent housing.

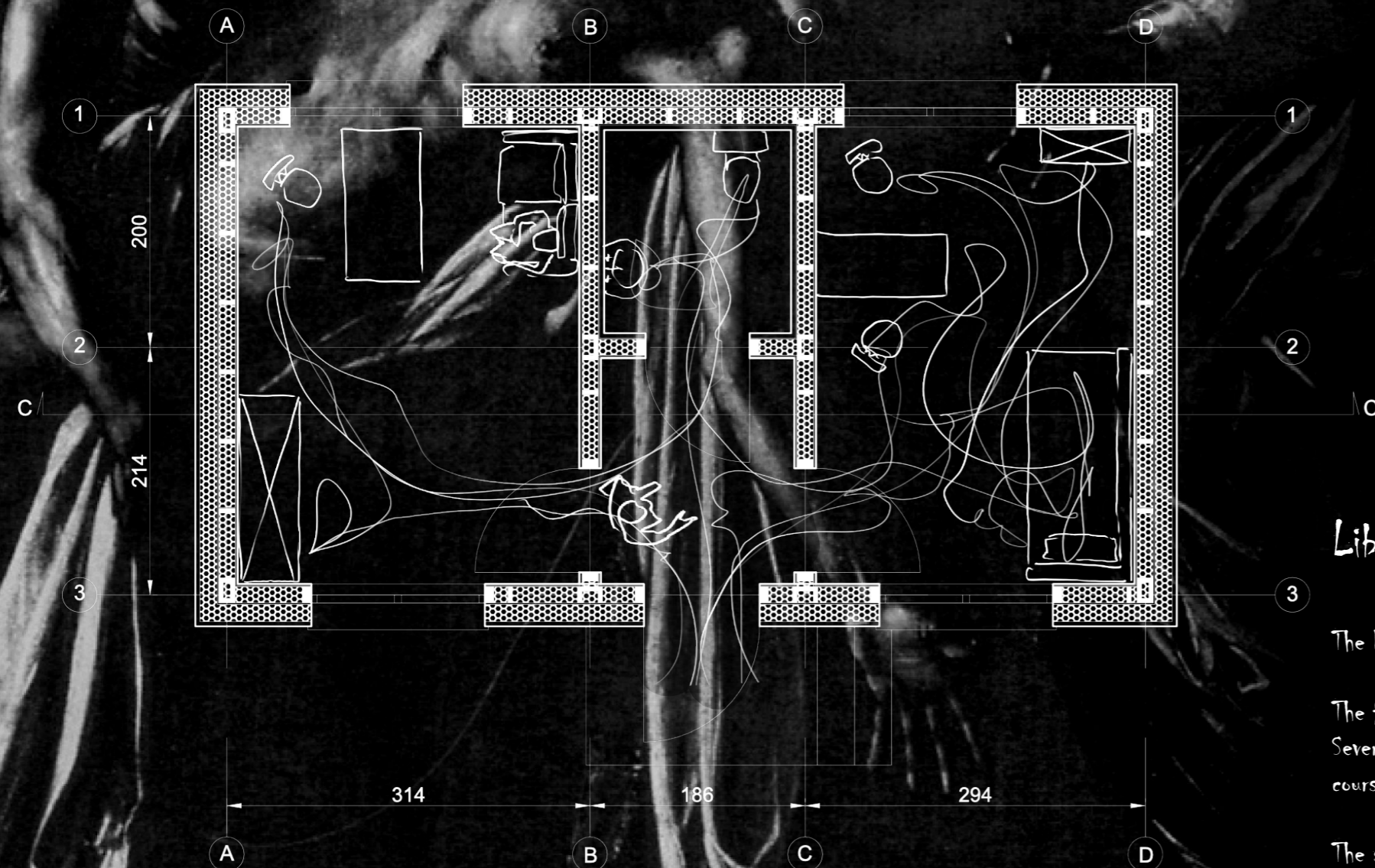
Together, these services create an essential bridge between stable accommodation and long-term social reintegration.



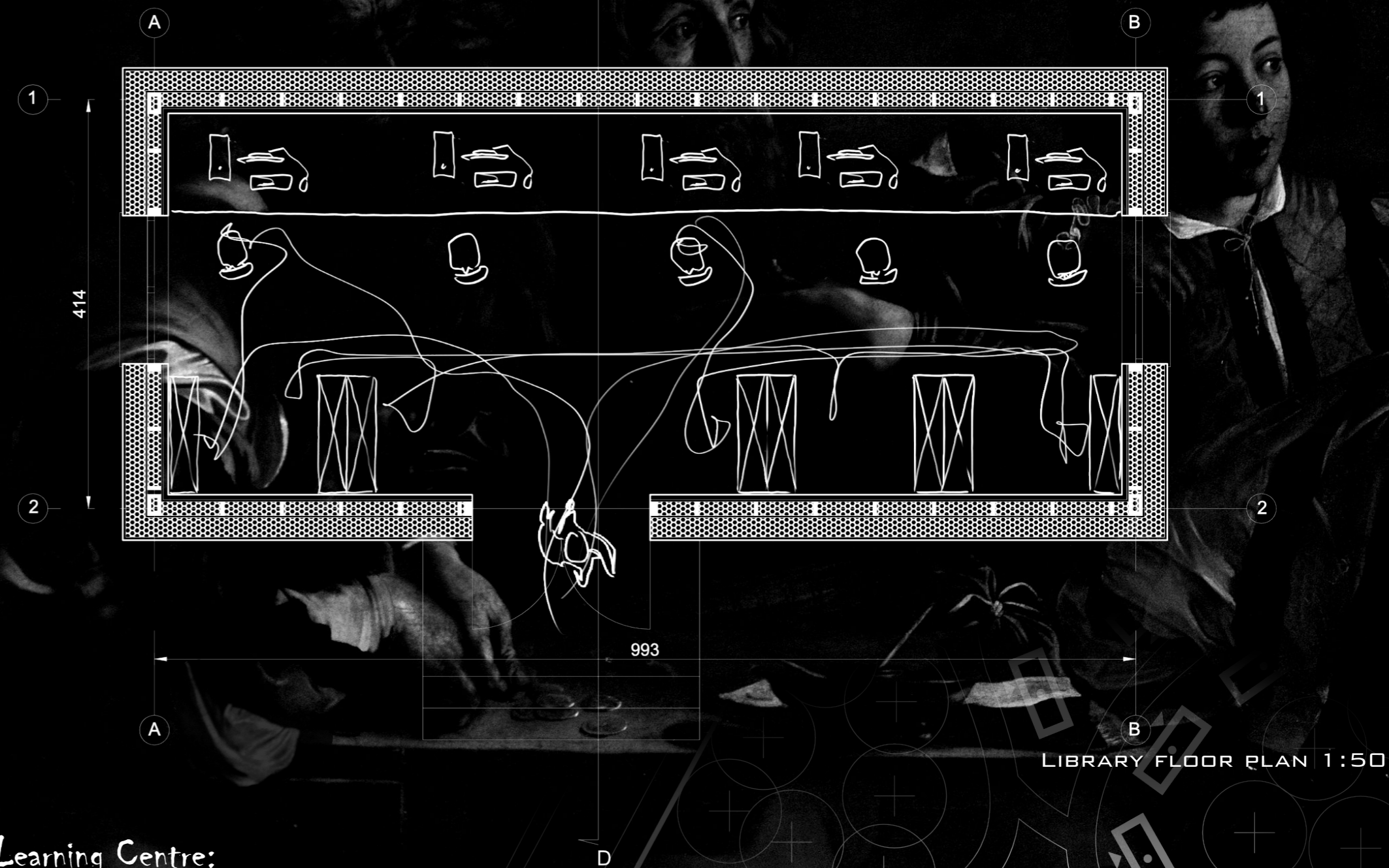
SECTION C-C 1:50



SECTION D-D 1:50



CABINETS FLOOR PLAN 1:50



LIBRARY FLOOR PLAN 1:50

Library and Digital Learning Centre:

The library serves as a quiet environment dedicated to learning, personal development, and employment preparation.

The facility contains books focused on professional development, financial literacy, psychology, and practical life skills. Several computer workstations with internet access allow residents to search for jobs, prepare applications, attend online courses, and manage everyday administrative tasks.

The space provides residents with the knowledge and tools necessary for rebuilding independence and improving future opportunities.