

ORIENTATION

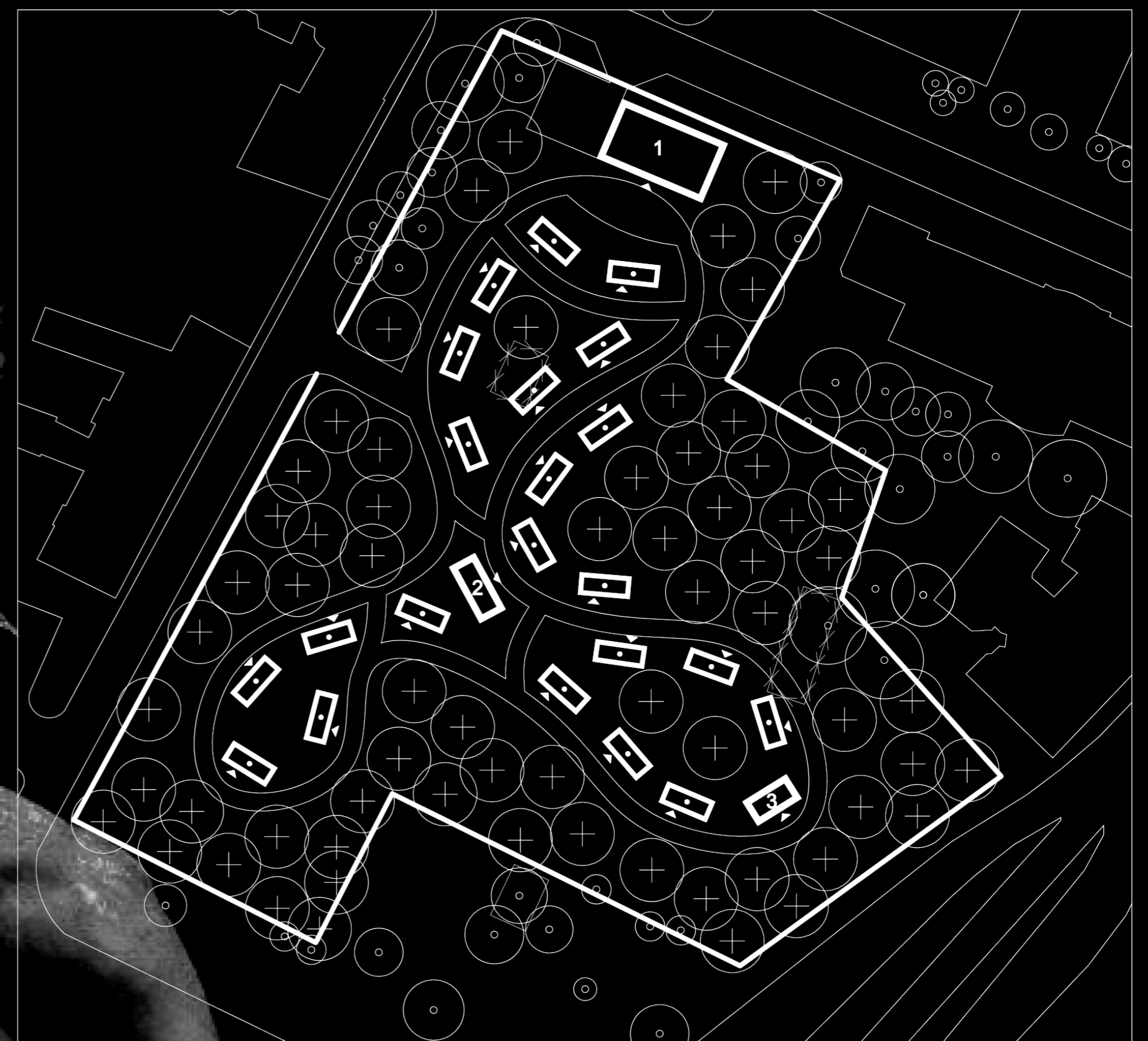
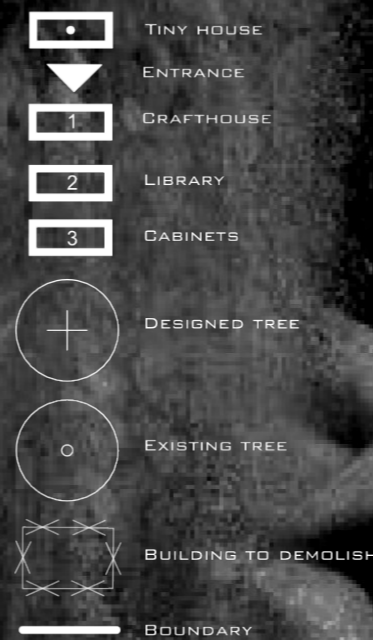
LEGEND:

Why Individual Houses?

Rather than using apartment blocks or shared housing, the project focuses on individual homes. In Polish culture, detached houses are strongly associated with comfort, stability, safety, and a sense of belonging. A private entrance and a fully independent living space help residents regain dignity, autonomy, and personal responsibility. Such an environment encourages stronger emotional attachment to the place and promotes respectful use of the living space.

Site choice:

The site is located in the city centre, offering direct access to public transportation, employment opportunities, healthcare services, and social infrastructure. This strategic location supports faster reintegration into urban life and encourages active participation in society. The project occupies a neglected urban wasteland — an underused asphalt-covered site overgrown with spontaneous vegetation. By transforming this abandoned area into a functional and welcoming environment, the project simultaneously addresses a social challenge and contributes to urban regeneration.



Why Are the Buildings Distributed Across the Site?

The buildings are intentionally dispersed throughout the site and connected by pedestrian pathways and landscaped green areas.

This approach provides several benefits:

- * encourages daily movement and physical activity;
- * increases interaction with nature and outdoor spaces;
- * reduces noise levels and environmental stress;
- * improves privacy and personal comfort;
- * creates the atmosphere of a small neighbourhood rather than an institution;
- * gives each building a clear identity and purpose;
- * contributes to a more diverse and human-scaled environment;
- * promotes spontaneous social interaction while respecting personal boundaries.

The extensive use of greenery is a key element of the project. Numerous studies have demonstrated that contact with nature supports mental well-being, reduces stress, and contributes to emotional recovery.

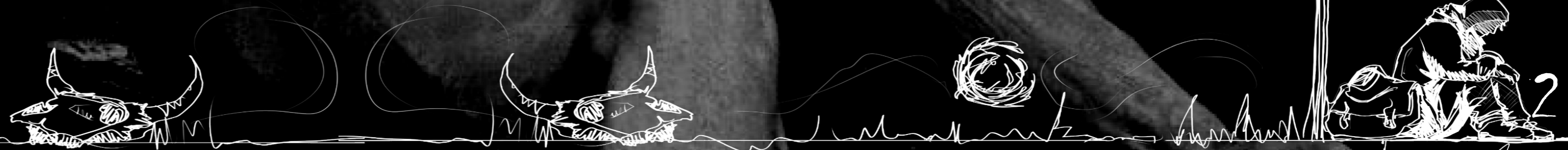
CONCEPT:

The project proposes a small-scale transitional housing community for people experiencing homelessness. Its primary goal is not only to provide temporary accommodation but also to create the conditions necessary for rebuilding independence, social integration, and a successful return to permanent housing and employment.

The concept is based on the Housing First approach, which recognizes stable housing as the essential first step toward solving other social and personal challenges. Instead of traditional shelters or shared dormitories, the project offers individual housing units that provide privacy, security, and personal space.

All buildings are designed using a timber-frame construction system. This solution is affordable, environmentally responsible, quick to build, and can be easily adapted or dismantled in the future if necessary, making it particularly suitable for social housing initiatives.

Although the community accommodates a relatively small number of residents, its impact is measured through long-term success. Helping even ten people each year successfully return to independent living represents meaningful progress in addressing homelessness.



SITE PLAN 1:250