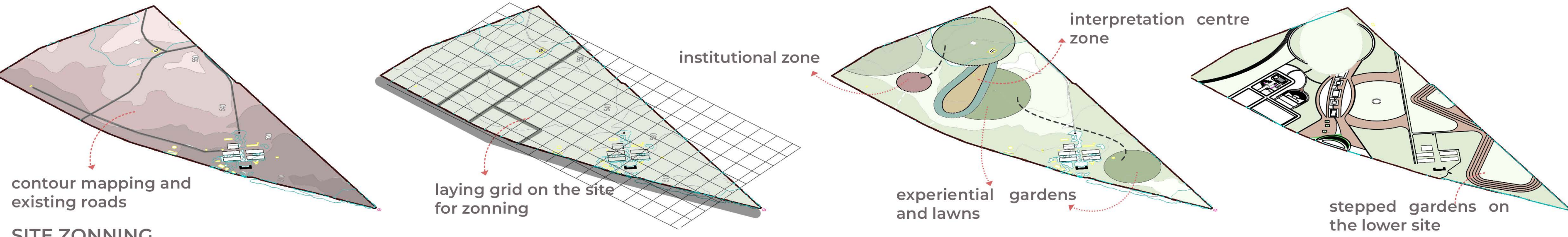




GRITOS DEL SILENCIO — Screams of Silence

The Arenal Interpretation Center is conceived as an immersive architectural journey that transforms memory into experience. Responding to the history of the former clandestine detention, torture, and extermination center, the project allows visitors to engage with the site's past through a carefully choreographed sequence of spaces rather than through conventional exhibition alone. Light, water, materiality, and landscape are employed as integral narrative elements throughout the project

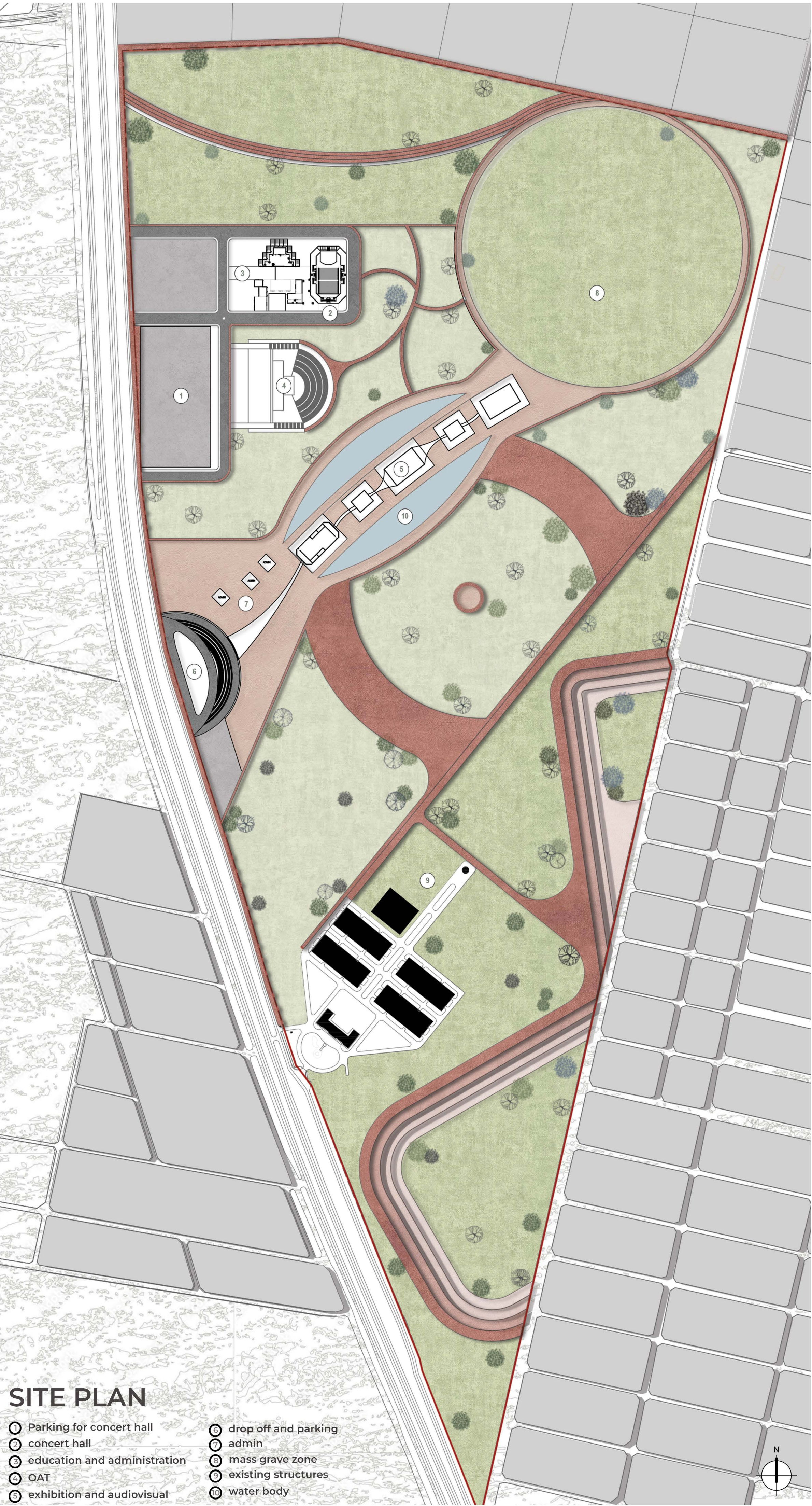
More than a memorial, the project embodies the concept of active memory by combining remembrance with education, dialogue, and community engagement. Through the contrast between darkness and light, enclosure and openness, the design transforms a site of suffering into a space for reflection, healing, and collective awareness. At its core, the project seeks to transform a landscape once associated with fear and silence into one of hope and collective memory

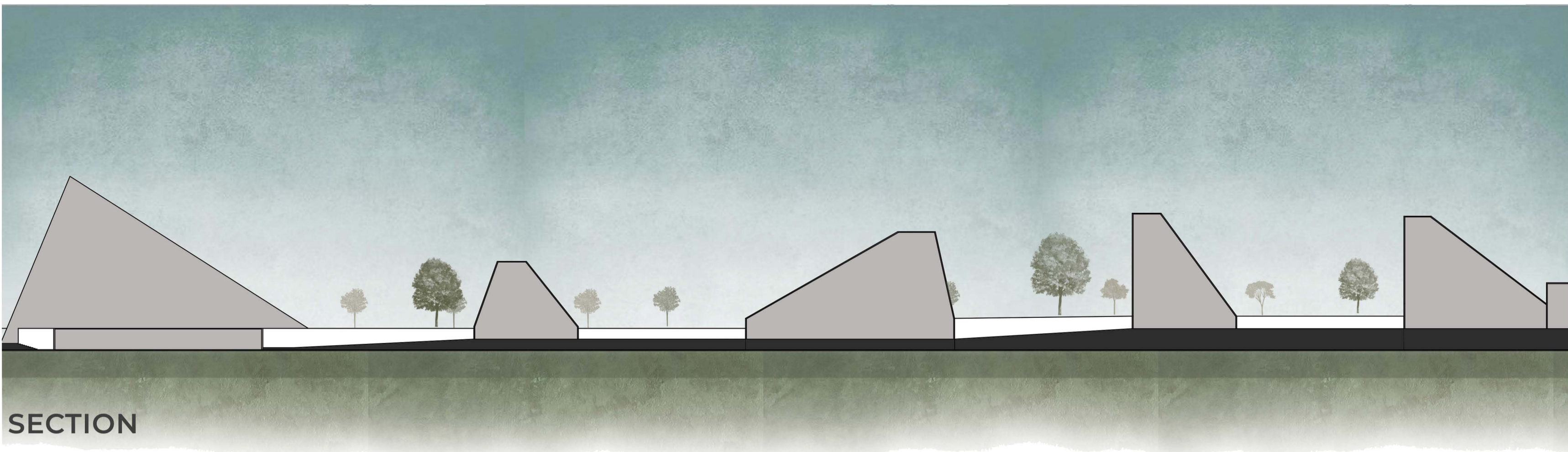


SITE ZONING

The Interpretation Center forms the focal point of the masterplan, while the surrounding gardens are designed according to the experiences they aim to evoke, creating spaces for reflection, healing, and engagement.

Lush landscaping and water features envelop the Interpretation Center, introducing a sense of calm and positivity. An Open-Air Theatre (OAT) that is positioned between the institutional and interpretation blocks encourages dialogue, cultural activities, and community interaction.





SECTION

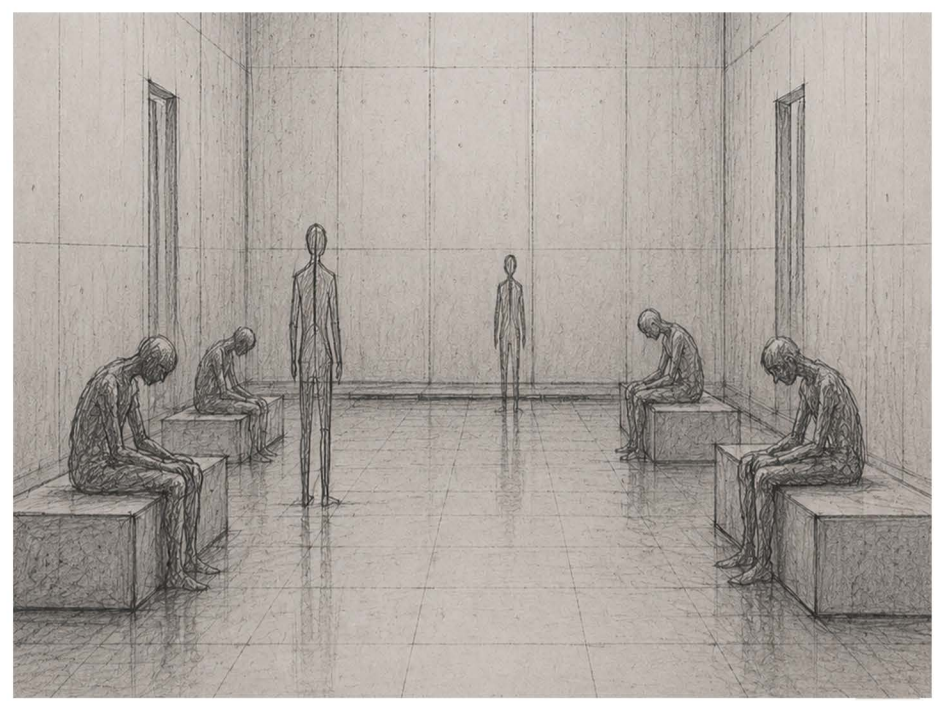
CONCEPT

Sharp lines, moody tones, and imposing forms come together to narrate one of humanity's darkest chapters. The design immerses visitors in the experiences endured within clandestine detention centres, encouraging emotional engagement rather than passive observation.

The Interpretation Centre is organized into three sequential spaces—the Detention Room, Torture Room, and Extermination Room—guiding visitors through a carefully choreographed journey that reflects the progression of events within the original centres. The experience begins underground in near-total darkness, symbolizing the loss of freedom and uncertainty faced by prisoners, before gradually ascending through spaces that represent their harsh ordeal.

The final space, the Extermination Room, is reimagined as a moment of liberation. Visitors emerge into a vast landscaped environment that offers space for reflection, remembrance, and healing. Monumental architectural forms, intentionally larger than human scale, create a sense of vulnerability and reinforce the emotional weight of the narrative.

Rather than simply informing, the Interpretation Centre seeks to leave a lasting impression, fostering reflection, empathy, and a deeper understanding of this tragic history.



First room - detention room
Prisoners were bound and kept here in miserable conditions. An artistic recreation makes the visitors feel their pain and suffering

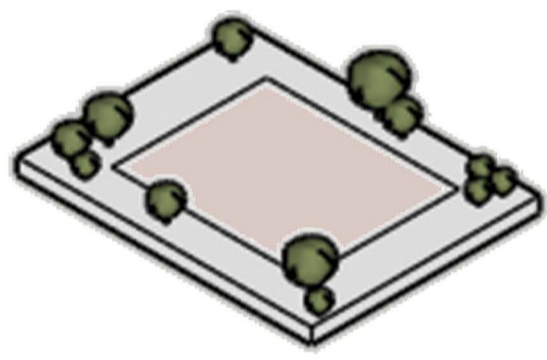


Second room - torture room
Brutalist concrete walls reflect the inhumane acts that were committed here. Visitors look through the prison bars and see pieces of the scene in the form of holograms

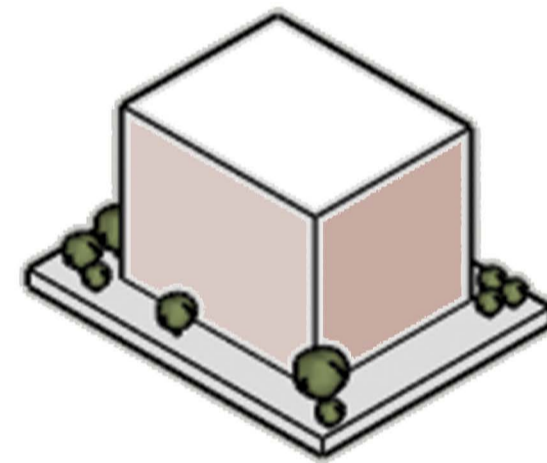


Third room - extermination room/liberation room
The prisoners were ultimately executed here. One might see it as liberation from the extreme cruelty. Which is how the room is perceived, with an elevator ascending upwards, leading to the exit and opening up to the vast landscaping symbolising freedom

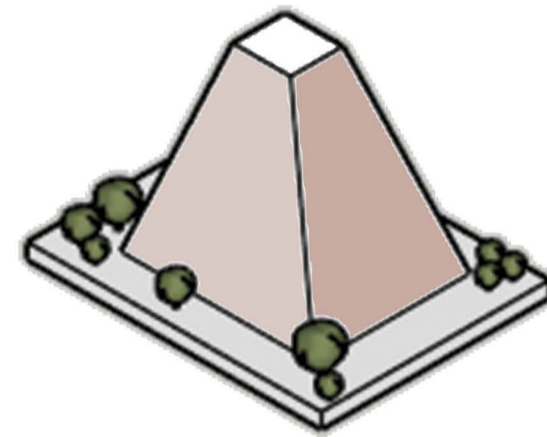
FORM DEVELOPMENT



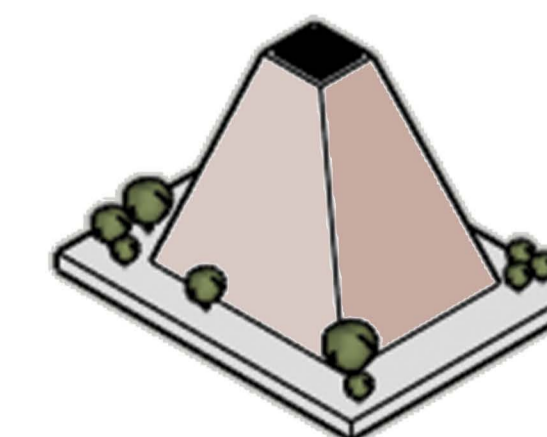
SITE DEFINITION
Establishing the project boundary and landscape framework



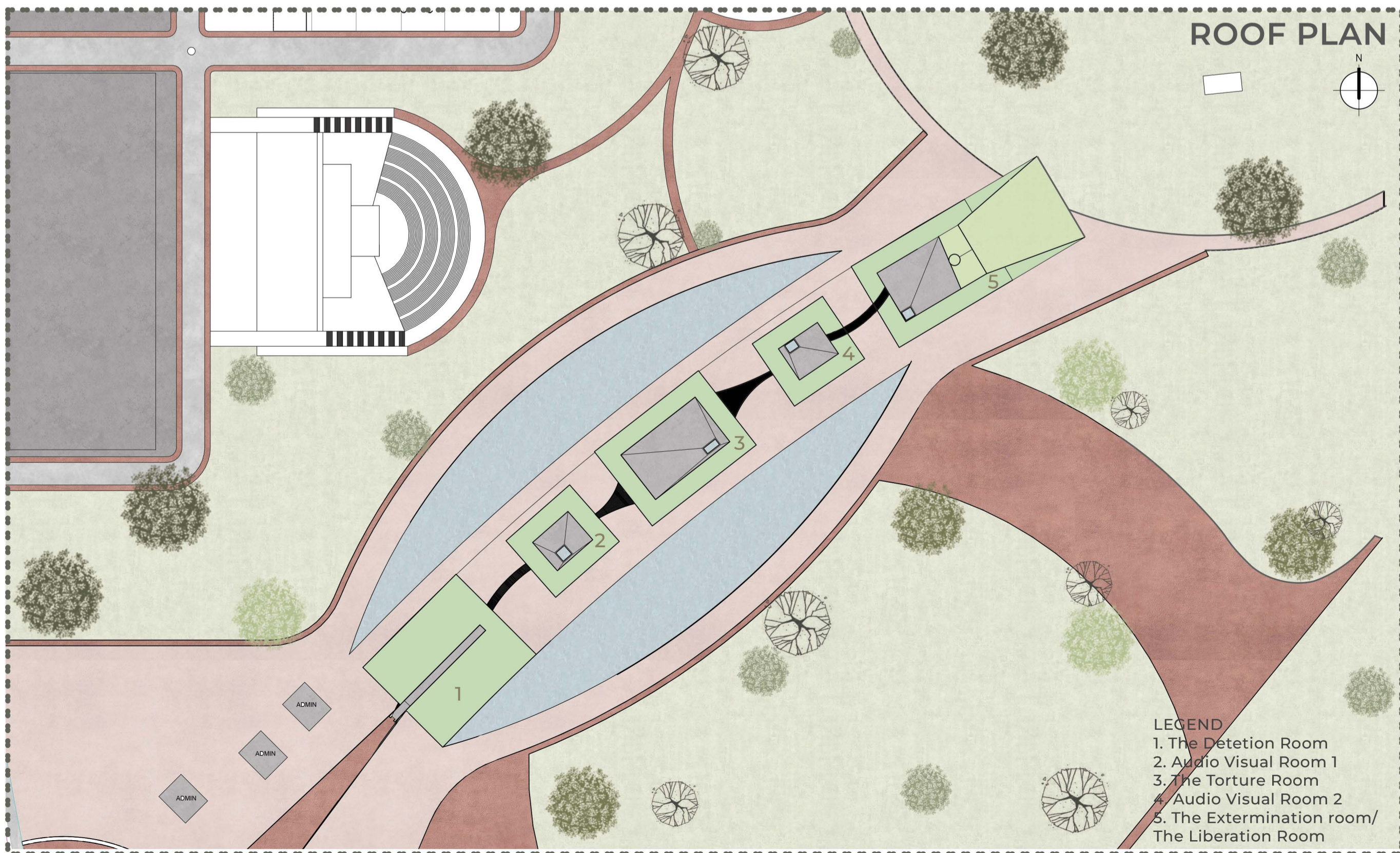
INITIAL MASSING
Introducing a simple cubic volume to define the built form



FORM TRANSFORMATION
Sculpting the mass into a tapered geometry to create a distinct architectural identity

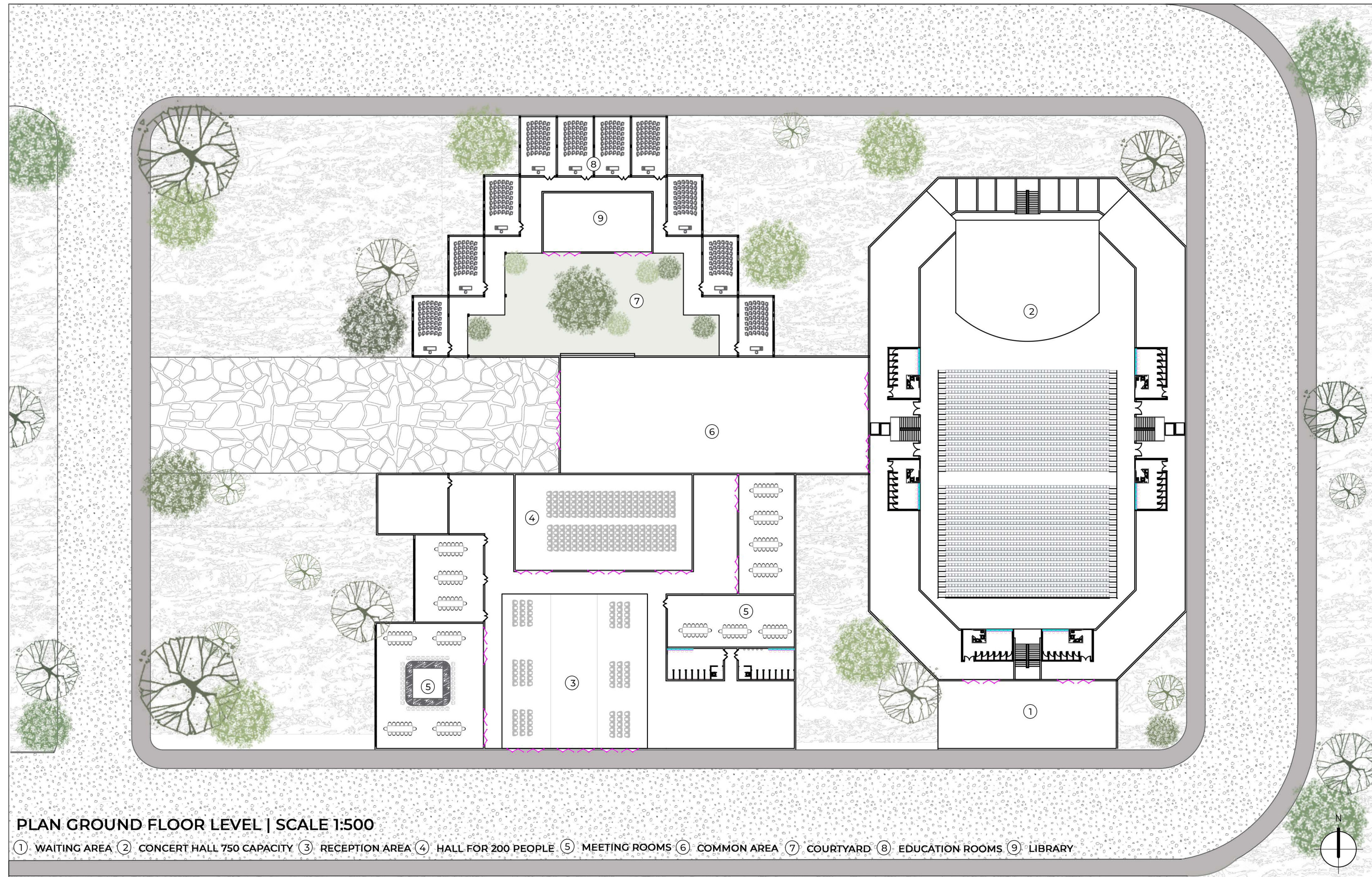


SPATIAL ARTICULATION
Carving the apex to introduce light and ventilation into the building



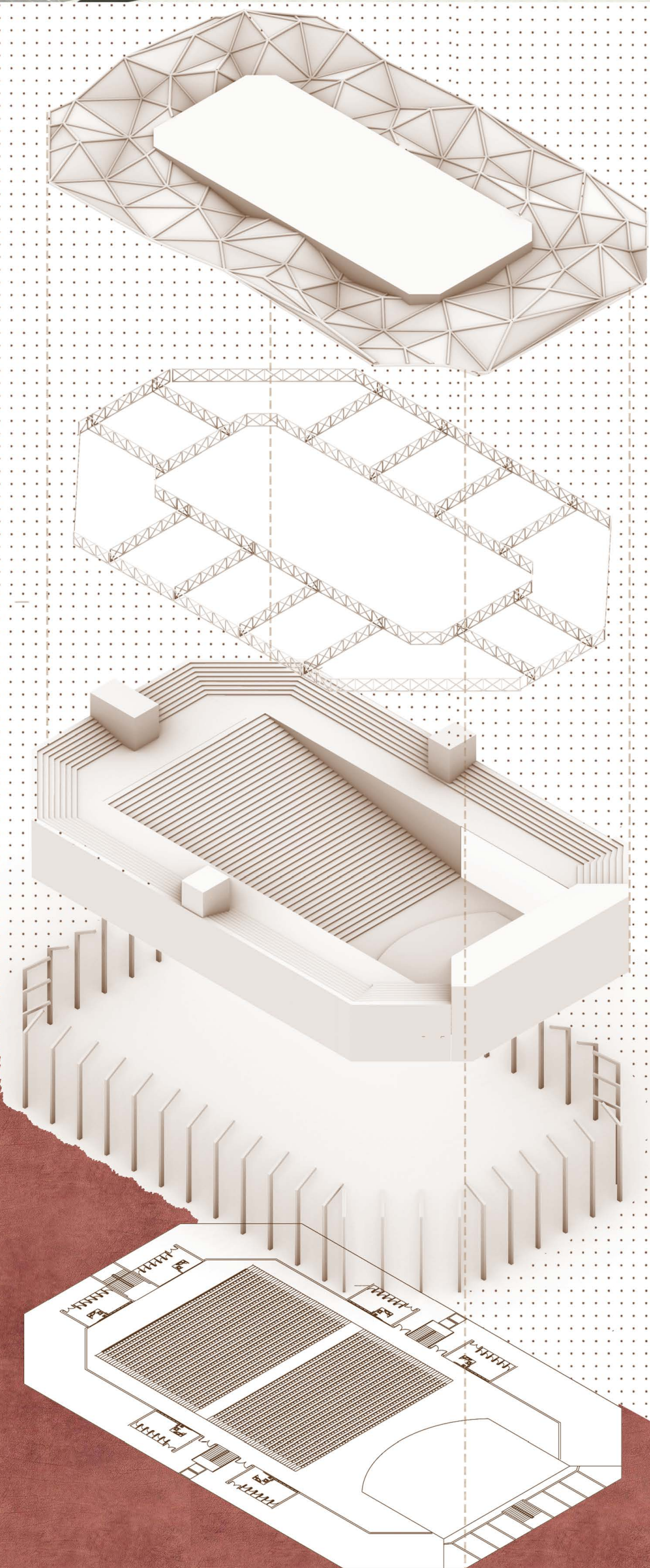


ISOMETRIC SECTION OF EDUCATIONAL BLOCK



PLAN GROUND FLOOR LEVEL | SCALE 1:500

① WAITING AREA ② CONCERT HALL 750 CAPACITY ③ RECEPTION AREA ④ HALL FOR 200 PEOPLE ⑤ MEETING ROOMS ⑥ COMMON AREA ⑦ COURTYARD ⑧ EDUCATION ROOMS ⑨ LIBRARY



The roof spans the large hall using a folded-plate origami structural form for rigidity without heavy supports. It employs polyglass fiber tensile roofing—lightweight, high-strength fibers tensioned over the origami framework, providing sound insulation and weather resistance.

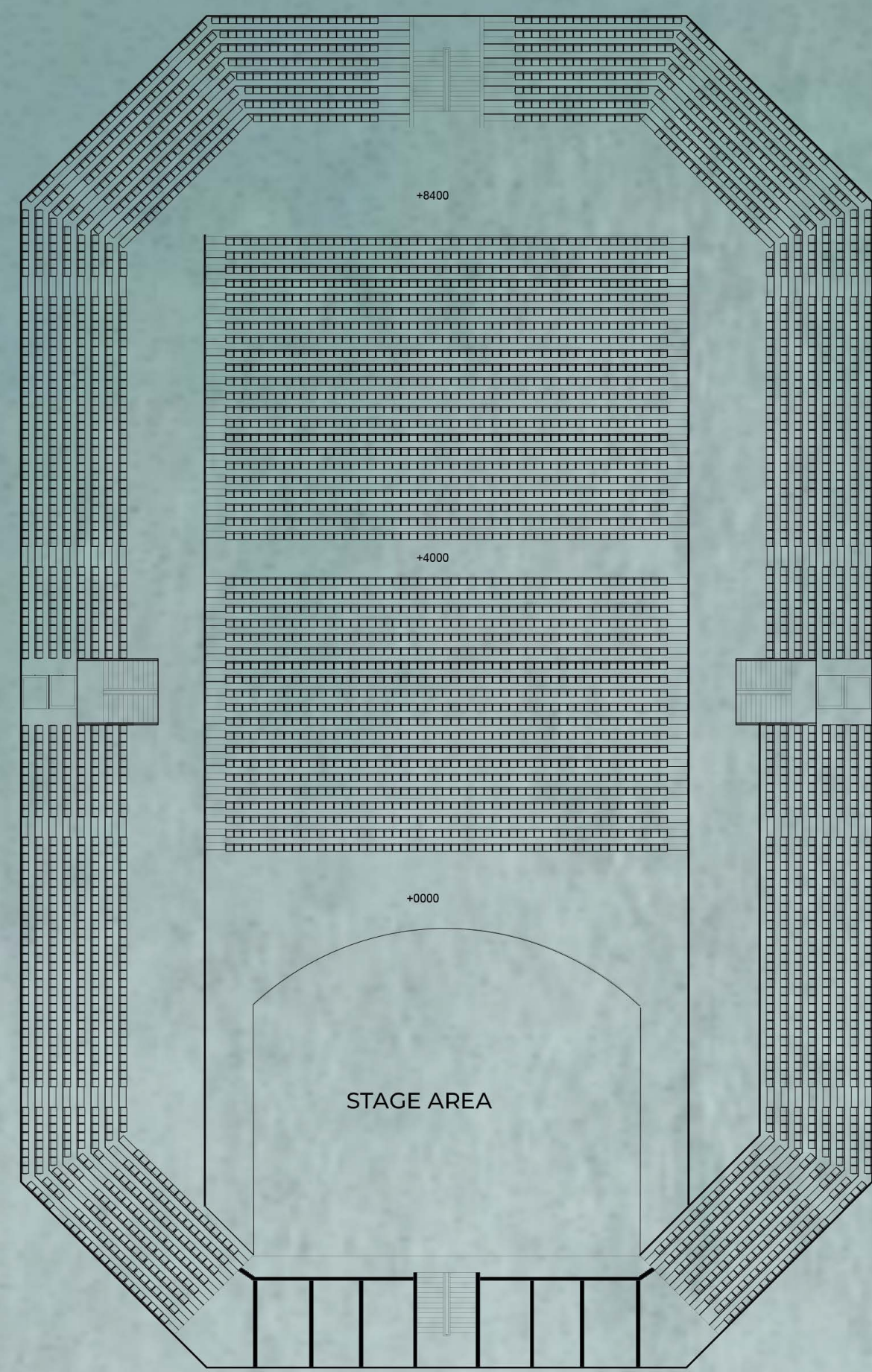
The truss is the backbone of a concert hall's structural system, combining engineering efficiency with architectural flexibility to support the roof, equipment, and acoustics while maintaining a clear, open space for spectators.

Multiple staircases connect to wide corridors for quick emergency evacuation. Hydraulic lift systems handle vertical circulation without bulky cradles. Walls use sound-proofing panels, reflectors, and adjustable diffusers for optimal acoustics.

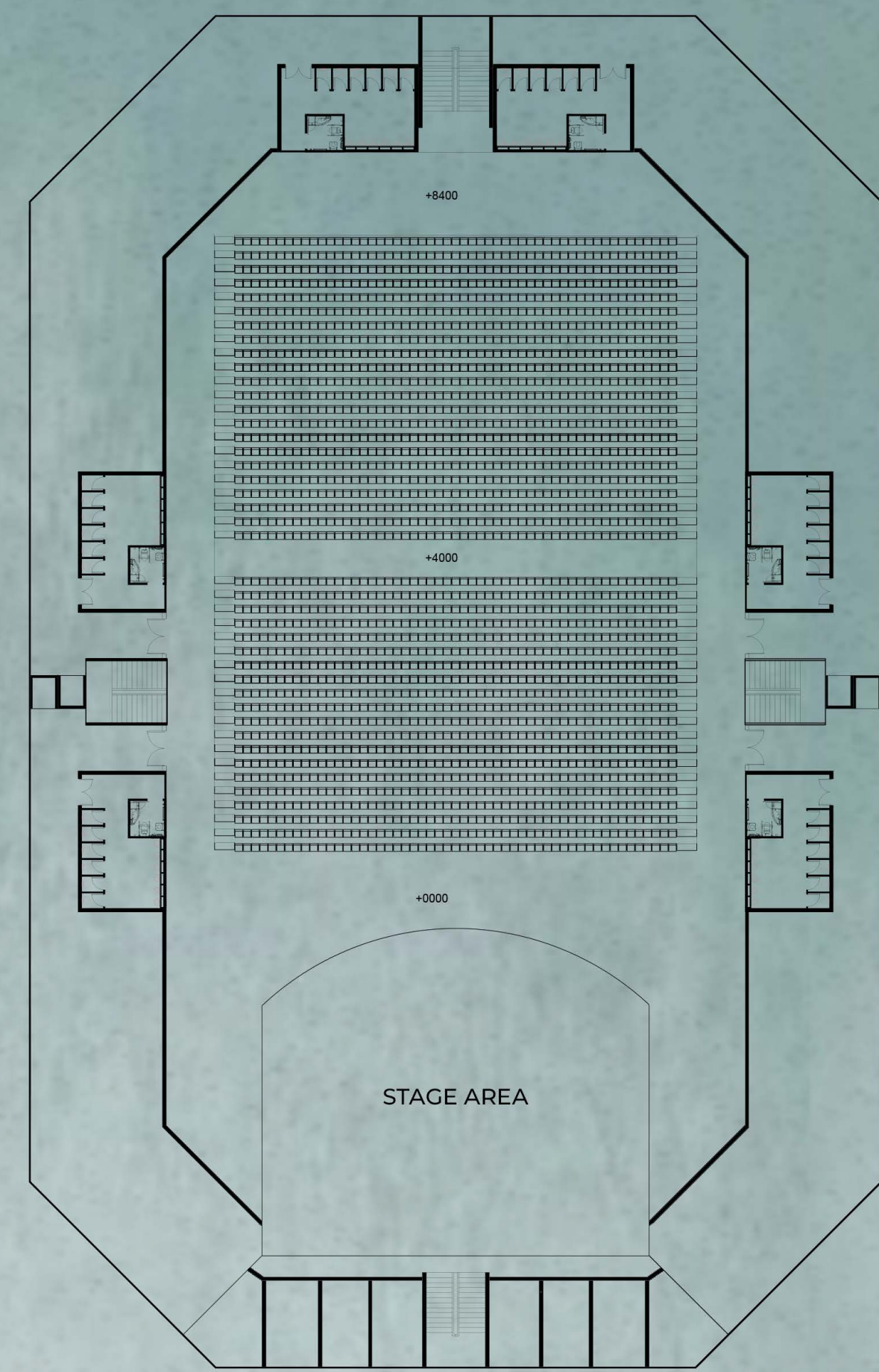
A robust column system surrounds the steel framework, supporting the metal strong truss at the top. Columns transfer roof and balcony loads while resisting wind/seismic forces. A reflective false ceiling near the proscenium directs sound to rear seats.

The hall features ground floor seating and a balcony level with raked seating to ensure unobstructed stage views from all corners. The stage is elevated 600–1,100 mm, with reflector panels near the proscenium for early sound reflections.





CONCERT HALL PLAN BALCONY LEVEL



CONCERT HALL PLAN LOWER LEVEL

DESIGN SUMMARY

The Interpretation Center is envisioned as a place of remembrance, reflection, and collective healing, comprising two primary components: a Concert Hall and a Museum with audiovisual exhibition spaces. Set within a landscape of extensive greenery, water features, and contemplative gardens, the project transforms a site marked by tragedy into one that encourages learning, memory, and renewal.

The Concert Hall serves as the cultural heart of the complex. Defined by a striking parametric folded-plate roof, the structure introduces a contemporary architectural identity while symbolizing resilience and continuity. Its dynamic form creates a memorable skyline and establishes a visual landmark within the larger memorial landscape. The hall provides a venue for performances, lectures, and public gatherings, allowing art and culture to become instruments of remembrance.

In contrast, the museum and interpretation spaces are embedded within the ground, creating an immersive journey through a carefully orchestrated sequence of light and darkness. Visitors move through spaces where shadows, narrow passages, controlled openings, and subdued illumination evoke the uncertainty, fear, and suffering experienced by those who once endured the atrocities associated with the site. The architecture itself becomes a medium of storytelling, transforming history into a tangible emotional experience.

The journey follows a symbolic cycle of life, culminating in the final chamber representing liberation, peace, and Moksha. From this space, a gently ascending green ramp leads visitors back into daylight and opens onto a vast landscape of greenery located above the grounds where countless victims were buried. This transition from darkness to light, enclosure to openness, and grief to hope creates a powerful conclusion—honoring the memory of the departed while affirming the resilience of life and the possibility of collective healing.

