

ARCHITECTURE

SCHOOL

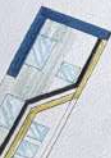
Library, Auditorium & Gymnasium

• SUBMITTED BY:
• ZAIB WASEEM
• 24255031042
• SEMESTER - IV

• SUBMITTED TO:
• AR. BENISH
• AR. MARYAM
• AR. SAMAR

SESSION 2024-2025

RIGHT ELEVATION



COLOR PALETTE



PROJECT OVERVIEW

THE PROPOSED DESIGN IS FOR A SCHOOL LOCATED IN FATMA HOUSING SOCIETY, ON A SITE MEASURING 430 FT X 630 FT. THE SCHOOL IS DESIGNED IN THREE MAIN ZONES: PRESCHOOL, ELEMENTARY, HIGH SCHOOL. WITH SHARED FACILITIES. THE LAYOUT FOCUSES ON OPEN CONNECTED SPACES WITH CLEAR ZONING AND OPEN AREAS ARE INTEGRATED BETWEEN BUILT FORMS TO AVOID A CONGESTED FEEL. RAMPS ARE PROVIDED FOR ACCESSIBILITY.

PROJECT DETAILS

- LOCATION: FATMA HOUSING SOCIETY, LAHORE
- DIMENSIONS: 430 FT X 630 FT AREA: 266,600 sq-ft
- CLIENT: INSTITUTIONAL (PRESCHOOL, ELEMENTARY, HIGH)
- SCOPE: SCHOOL PLANNING & LIBRARY/AUDITORIUM DESIGNING
- KEY COMPONENTS: ADMIN. BLOCK, ACADEMIC BLDGS, LIBRARY, GYMNASIUM, AUDITORIUM.



LITERATURE

THE CONCEPT DESIGN CONSIST OF A CENTRAL CIRCULAR CORE ACTING AS A CENTRAL POINT OF CONNECTIVITY PROVIDING EQUAL ACCESS TO ALL ACADEMIC ZONES. RECTANGULAR ACADEMIC BLDGS ARE USED FOR TYPICAL CLASSROOM LAYOUT. THE OVERALL COMPOSITION KEYS LAYOUT OPEN & CONNECTED. SAFETY & ACOUSTICS ARE ADDRESSED WITH MULTIPLE EXITS, RAMPS & LANDSCAPE.

INTRODUCTION

ARCHITECTURE 2A18 WASEEM
SESSION 2024-25 2025031045

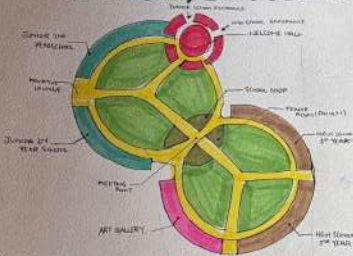
SESSION 2A18 WASEEM

AIKO EDUCATIONAL INSTITUTION

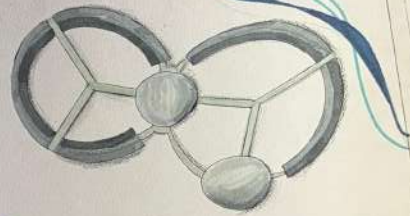
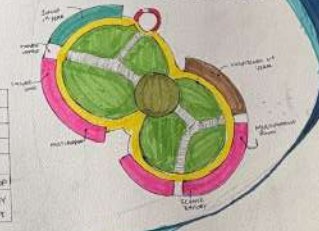
PROJECT OVERVIEW

LOCATION: KUALA LUMPUR, MALAYSIA
 AREA: 9515m² YEAR: 2011
 ARCHITECTS: TAVEL DESIGN PLANNERS ARCHITECTS & INTERIORS
 ARCHITECTURAL STYLE: MODERN, NATURE-INSPIRED

GROUND FLOOR



FIRST FLOOR



CONCEPT



PROS	CONS
<ul style="list-style-type: none"> VENTILATION NATURAL LIGHTING CONNECTIVITY PRIVATE SPACES UNIQUE SAFE COMFORT (INDOOR) 	<ul style="list-style-type: none"> DIFFICULT CONSTRUCTION SPACE WASTE CONFUSING LAYOUT NOISE TRAVEL OUTDOOR LANDSCAPE

SCHOOL CASE STUDY

ARCHITECTURE 2A18 WASEM
 SESSION 2014-15 2425031049

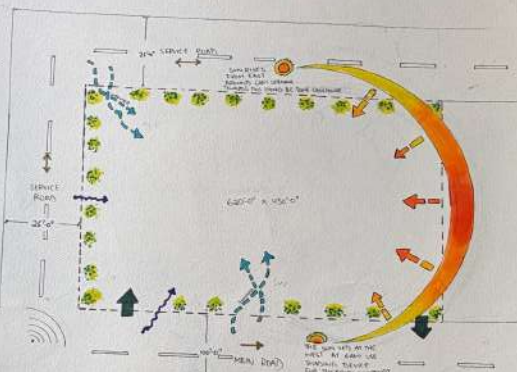
ARCHITECTURE
SESSION 2024-29
2AIB WASEEM

SCALE: 1/4" = 1'-0"
ARCHITECTURE SESSION 2024-29
2AIB WASEEM

ANALYSIS



LOCATION



SITE DETAILS

- ECONOMIC FAZARA HOUSING SOCIETY
- AREA: 630 FT. X 100 FT.
- NEIGHBORHOODS: COMMERCIAL
- ZONING: LDA LAWS
- CLIMATE: HOT (SUMMER), MILD (WINTER)

**S
W
O
T**

- DRAINAGE SYSTEM
- SOIL CHARACTERISTICS
- ROAD ACCESSIBILITY
- EXISTING LANDSCAPE
- SOIL TEMPERATURE
- TRAFFIC NOISE
- ENERGY EFFICIENT
- COMMERCIAL ACTIVITY
- FUTURE DEVELOPMENT
- PEAK TRAFFIC
- EXISTING HEAT
- LANDSCAPE

CLIMATE ANALYSIS

- SUNSHINE: 6:30 AM
- SUNSET: 5:30 PM
- HUMIDITY: 50-60%
- WIND DIRECTION: SW-NW
- TEMPERATURE: 35-40°C

KEY

- VEGETATION
- SUNPATH
- WIND DIRECTION
- BUILDINGS
- ROADS
- NOISE
- VEIL DENSITY
- TEMPERATURE
- BOUNDARY SITE
- ENTRY / EXIT
- ROAD TION

SITE ANALYSIS

ARCHITECTURE 2AIB WASEEM
SESSION 2024-29 2AIB WASEEM

SPACE REQUIREMENTS

SCHOOL SPACES

- Classrooms
- Washrooms
- Assembly Area
- Gymnasium
- Library
- Auditorium
- Canteen
- Grounds
- Art Room
- Activity Room
- Multi Purpose Hall
- Labs (Computer, physics, chemistry)

LIBRARY SPACES

- Reading Zone (Quiet + Collaborative)
- Book Stacks
- Digital Zone
- Display Spaces
- Partition Screens

AUDITORIUM SPACES

- Seating Area
- Stage
- Back Stage
- Control Room
- Lobby
- Workshop
- Rehearsal Room
- Green Room
- Make-up Room
- VIP Area



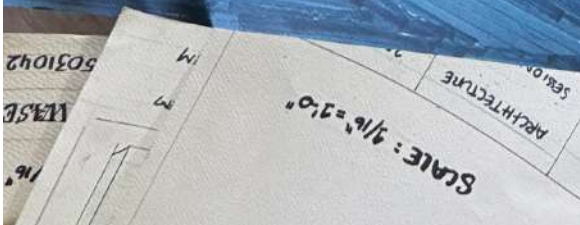
3-D SKETCH

SPACE REQUIREMENTS

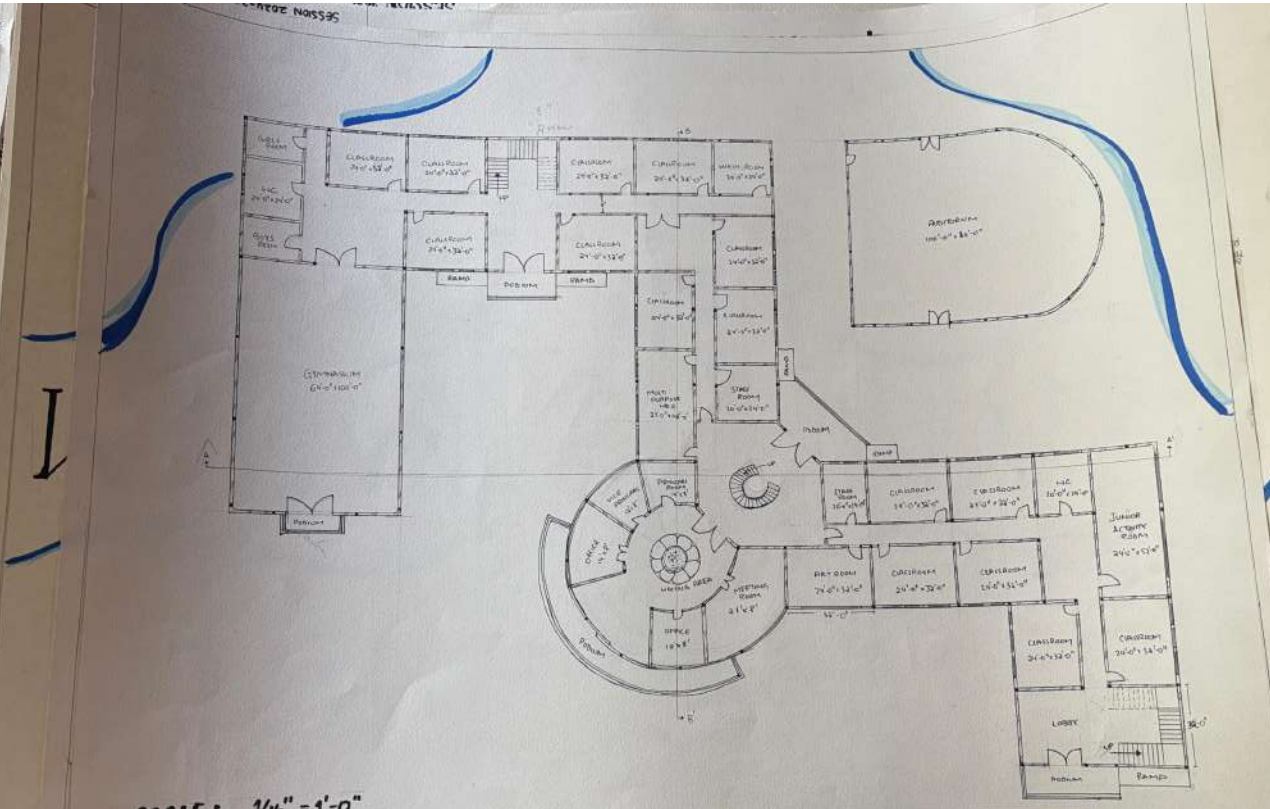
ARCHITECTURE ZAIB

SESSION 2024-29

24255031042



ARCHITECTURE
 LEWAN 2014-19
 ARCHITECTURE
 24352031042
 2418 WASEEM
 24352031042
 ARCHITECTURE
 2418 WASEEM
 24352031042
 ARCHITECTURE
 2418 WASEEM
 24352031042

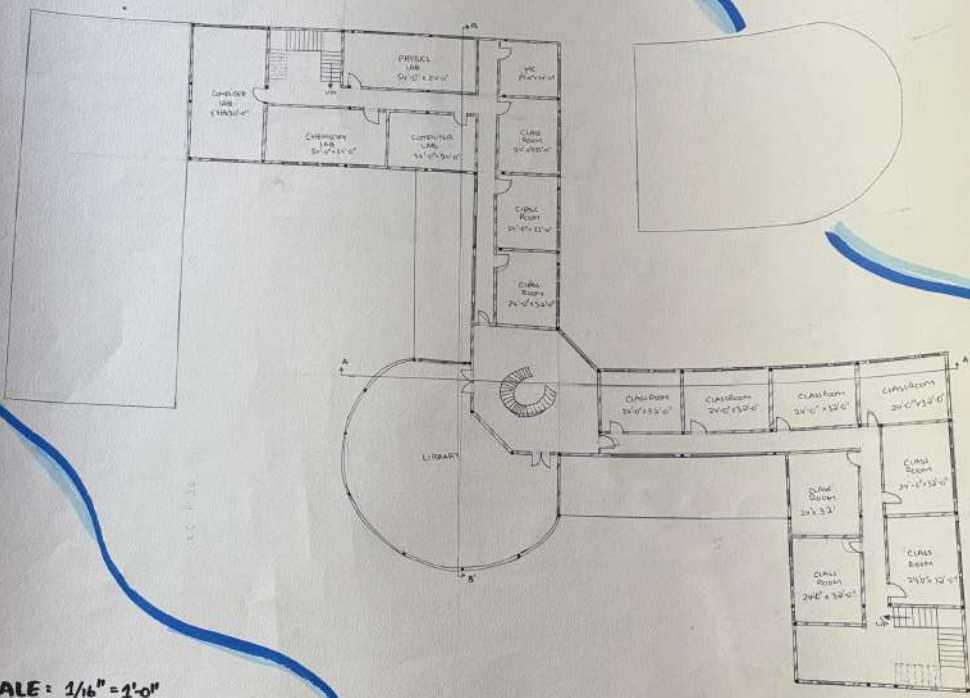


SCALE: 1/16" = 1'-0"

GROUND FLOOR PLAN

ARCHITECTURE	2418 WASEEM
SESSION 2014-19	24352031042

ARCHITECTURE
SESSION 2014-19
24255031042



SCALE: 1/16" = 1'-0"

1st FLOOR PLAN

GROUND FLOOR PLAN

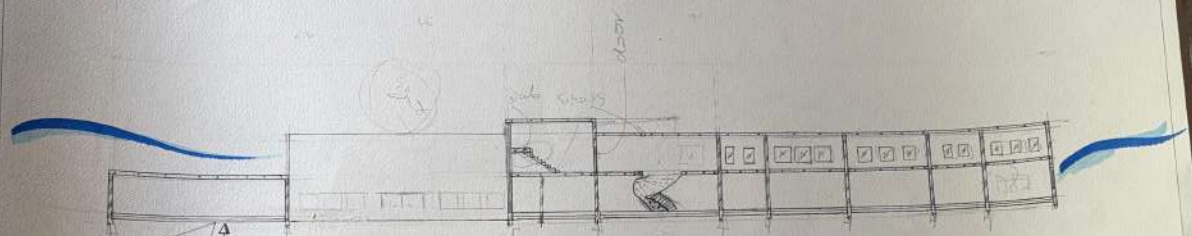
ARCHITECTURE
SESSION 2014-19

2418 WASEEM
24255031042

SESSION 2014-19

24255031042

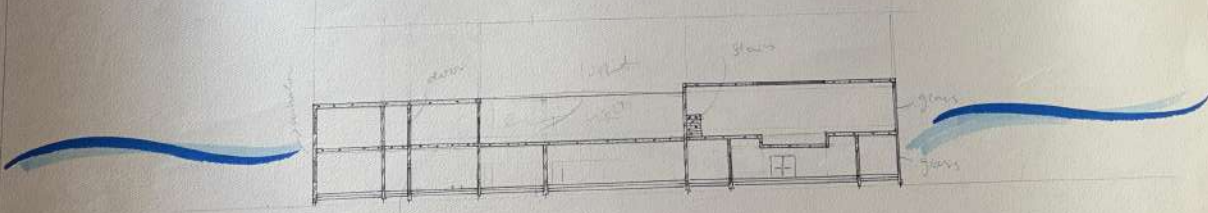
ARCHITECTURE
 SECTION 2018-09
 2018 WASEEM
 2018 WASEEM



SECTION A-A'



- 1" TERRAZO FINISH
- 2" THIN CC (1-2")
- 3" 1800 CURB
- 6" RCC SLAB
- 4" SAND FINISH



SECTION B-B'

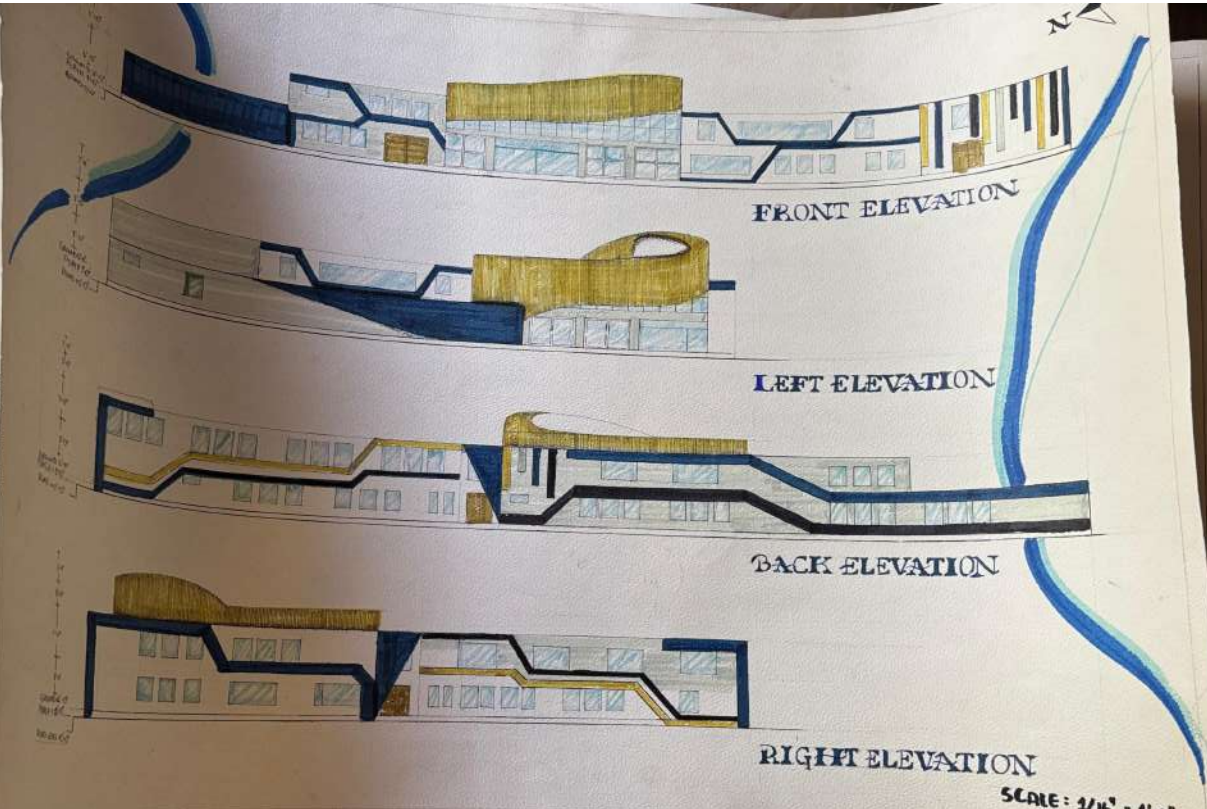
SCALE: 1/16" = 1'-0"

SECTIONS

ARCHITECTURE	2018 WASEEM
SECTION 2018-09	24955031042

SCALE:
ARCHITECTURE
SESSION 2024-2025

COLOR PALETTE

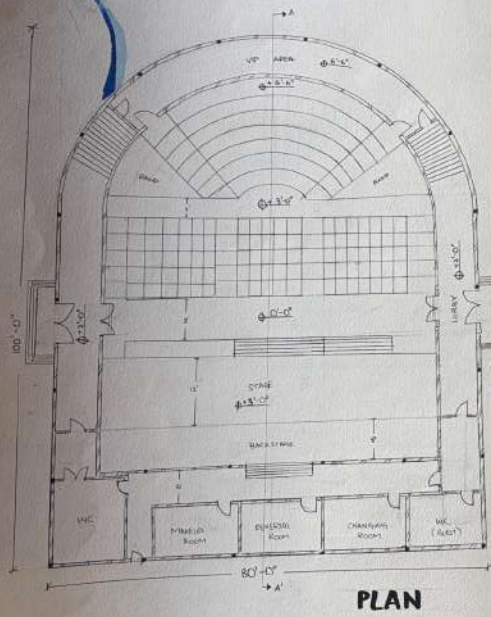


ELEVATION

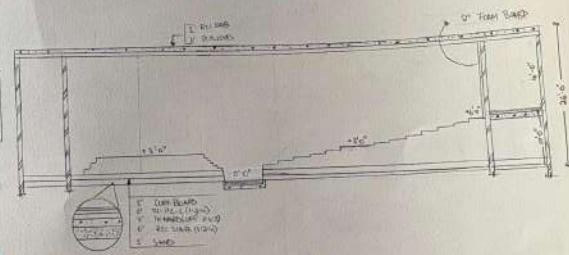
ARCHITECTURE STUDIO ZAIB WASEEM
SESSION 2024-2025

SCALE: 1/16" = 1'-0"

AUDITORIUM PLAN SECTION



PLAN



SECTION A-A'

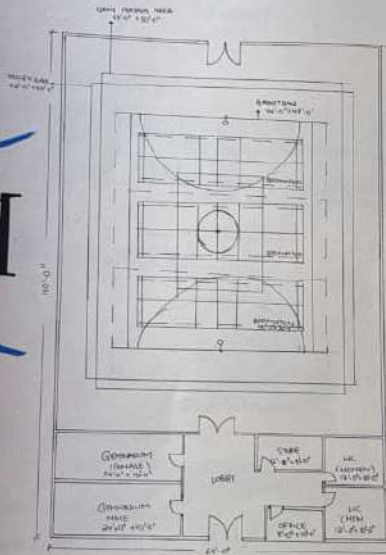
SCALE: 1/8" = 1'-0"

ARCHITECTURE

2A18 WASEEM

GYM

NASIUM



SCALE: 1/8" = 1'-0"

GYMNASIUM

ARCHITECTURE

ZAIB WASEEM

SESSION 2024-2025

LOOR PLAN

COLOR