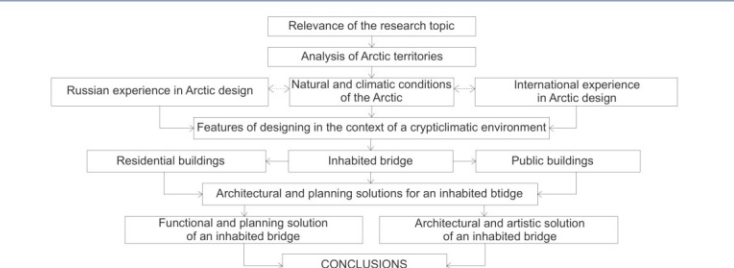
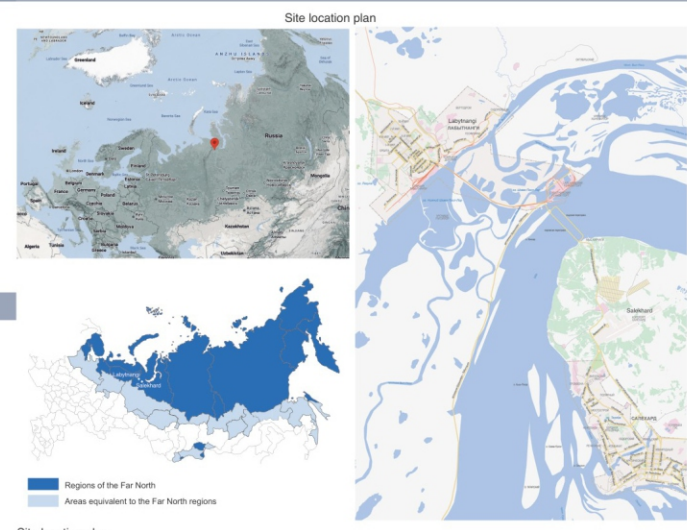


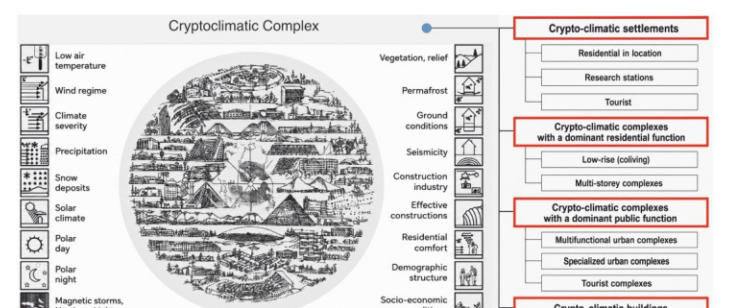
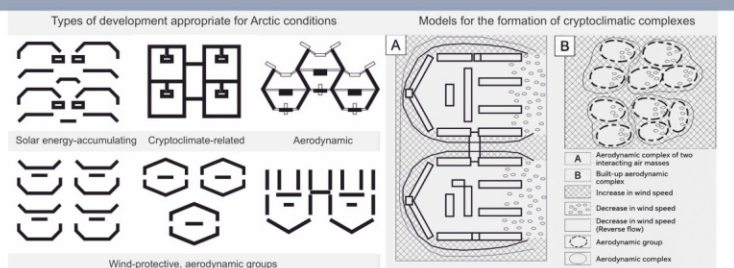
RESEARCH METHODOLOGY FRAMEWORK



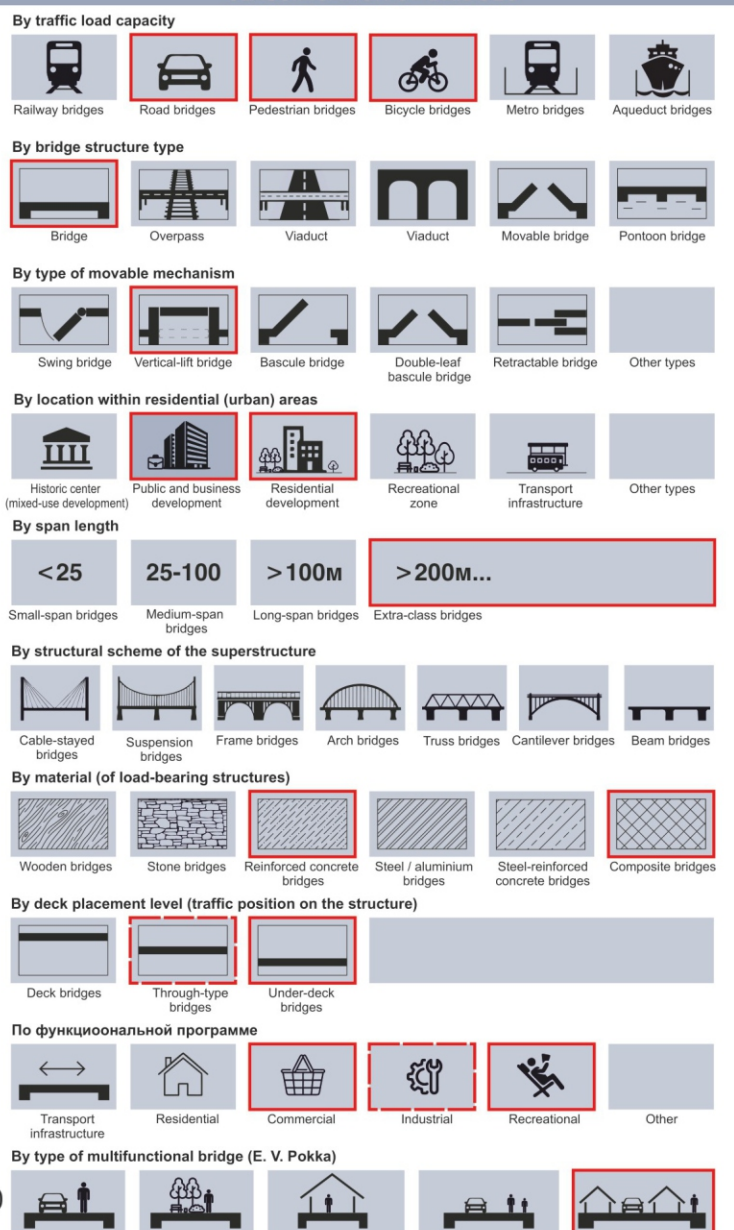
SITE ANALYSIS FOR DESIGN



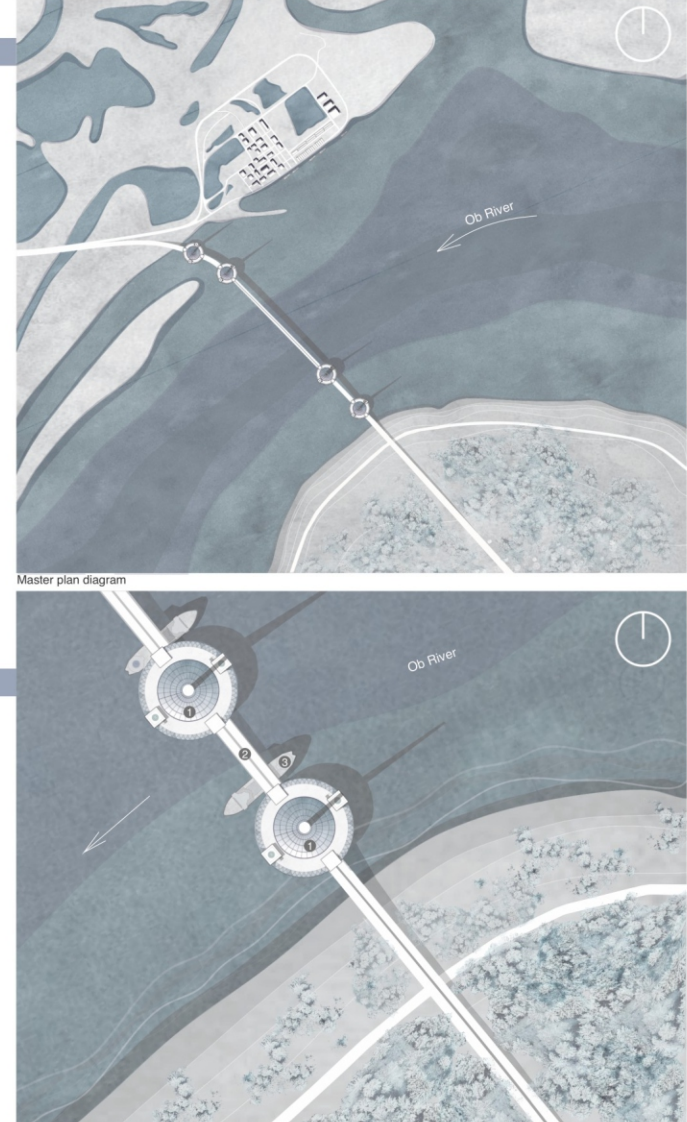
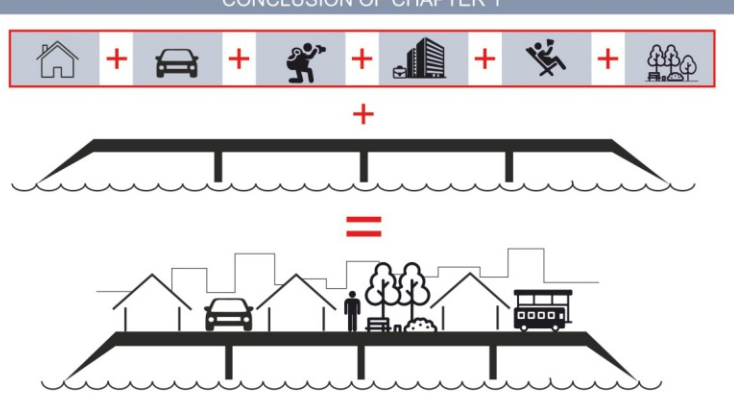
KEY CHALLENGES IN THE ARCTIC ZONE



CLASSIFICATION OF BRIDGES

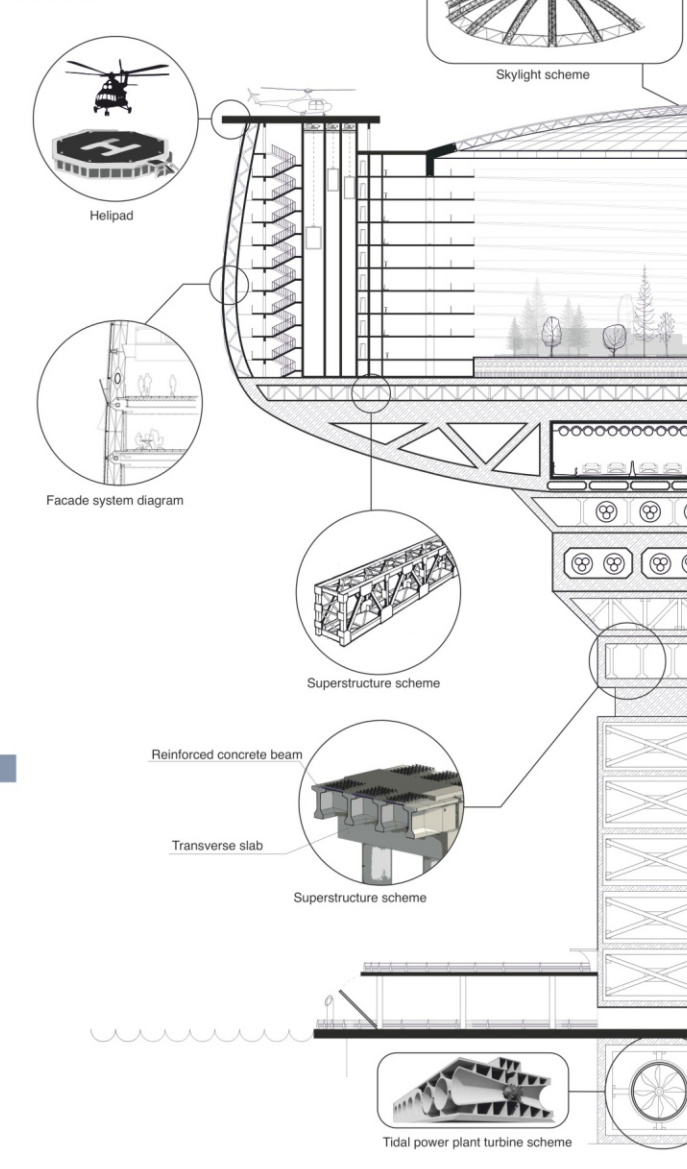


CONCLUSION OF CHAPTER 1

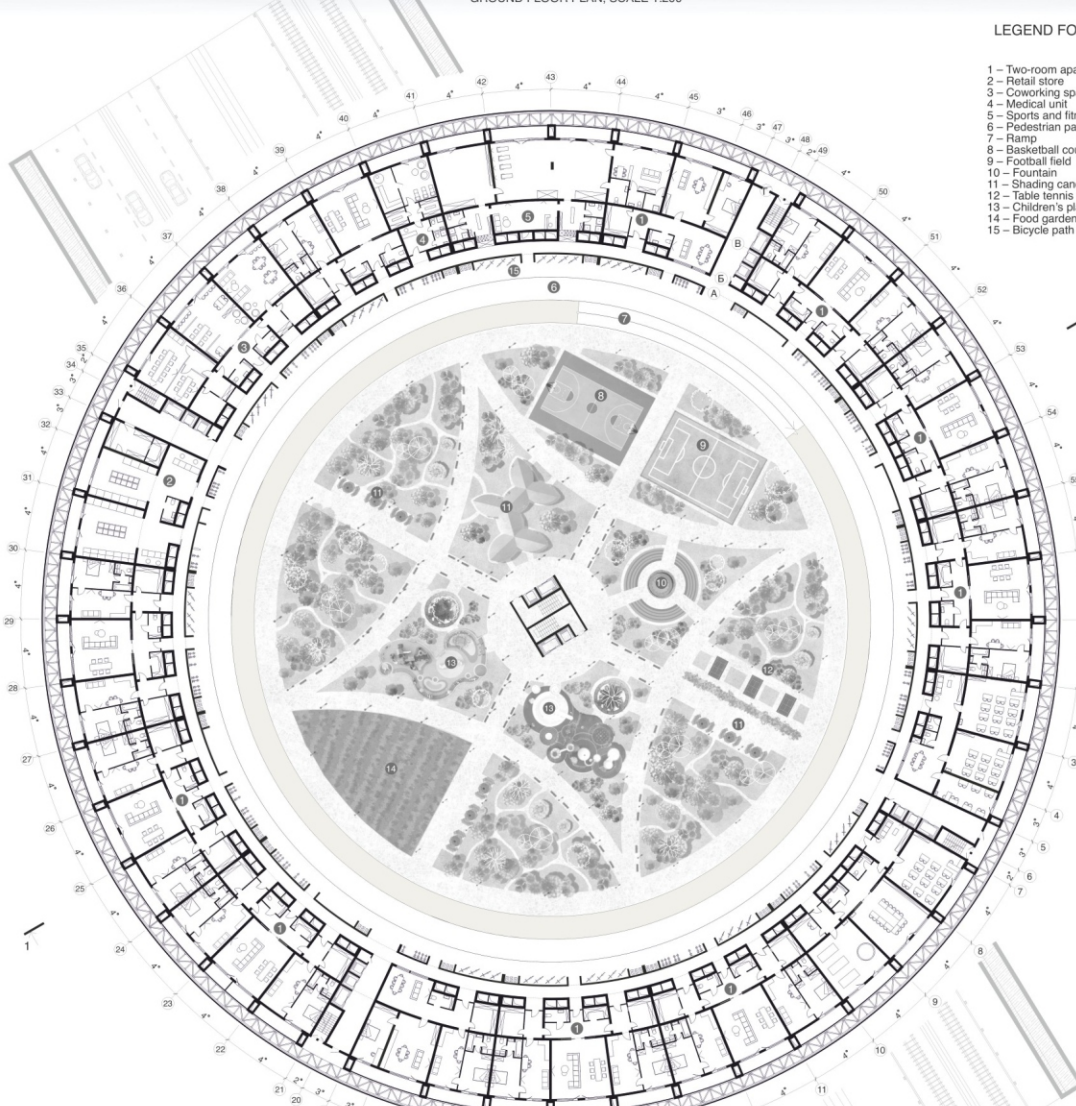


LEGEND FOR THE DIAGRAM

1. Multifunctional habitable bridge
2. Roadway
3. Nuclear feet



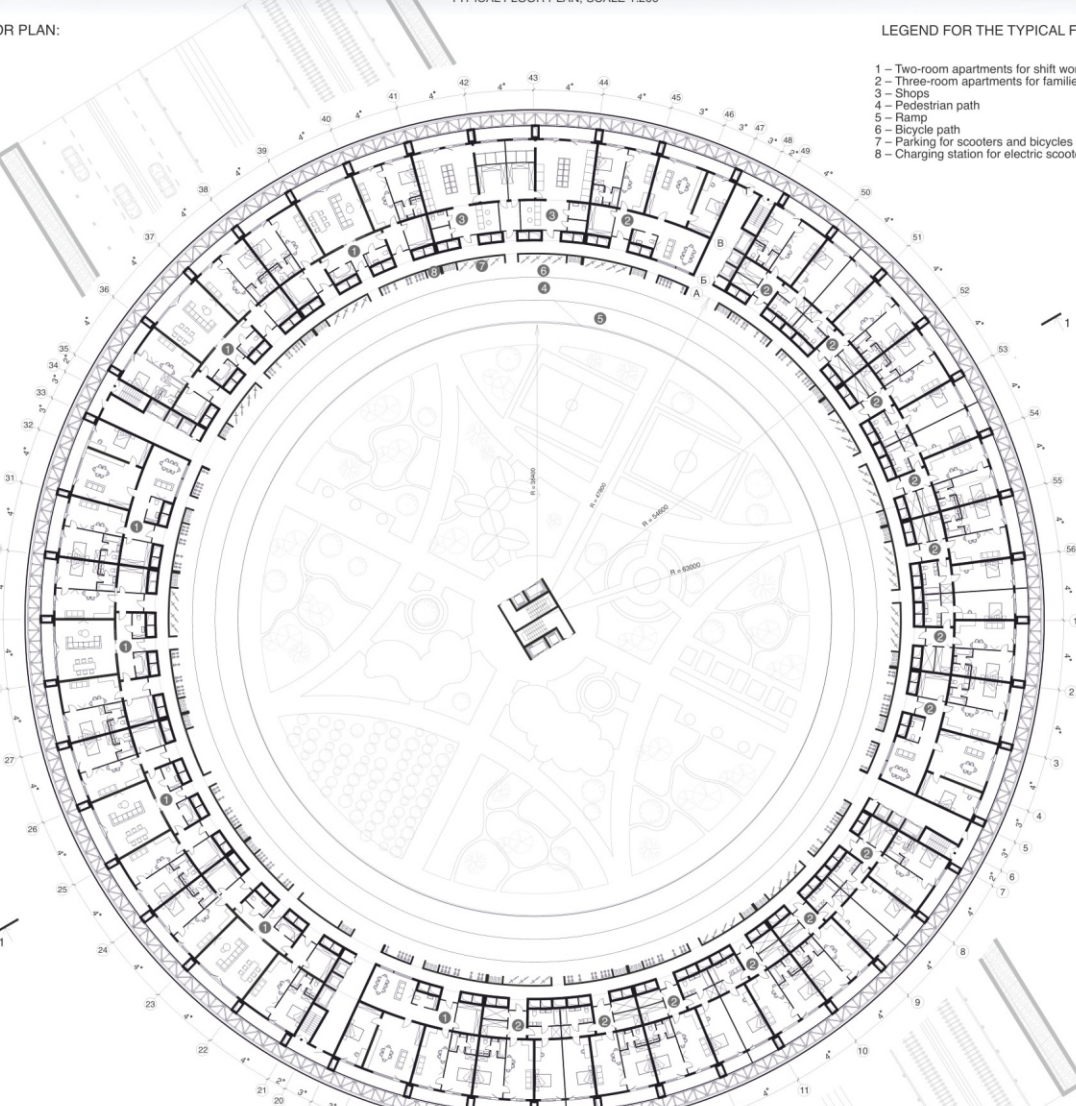
GROUND FLOOR PLAN, SCALE 1:200



LEGEND FOR THE GROUND FLOOR PLAN:

- 1 - Two-room apartments for shift workers
- 2 - Retail store
- 3 - Covering space
- 4 - Medical staff
- 5 - Sports and fitness block
- 6 - Pedestrian path
- 7 - Ramp
- 8 - Basketball court
- 9 - Football field
- 10 - Fountain
- 11 - Shading canopies and gazebos
- 12 - Table tennis tables
- 13 - Children's playgrounds
- 14 - Food garden
- 15 - Bicycle path

TYPICAL FLOOR PLAN, SCALE 1:200



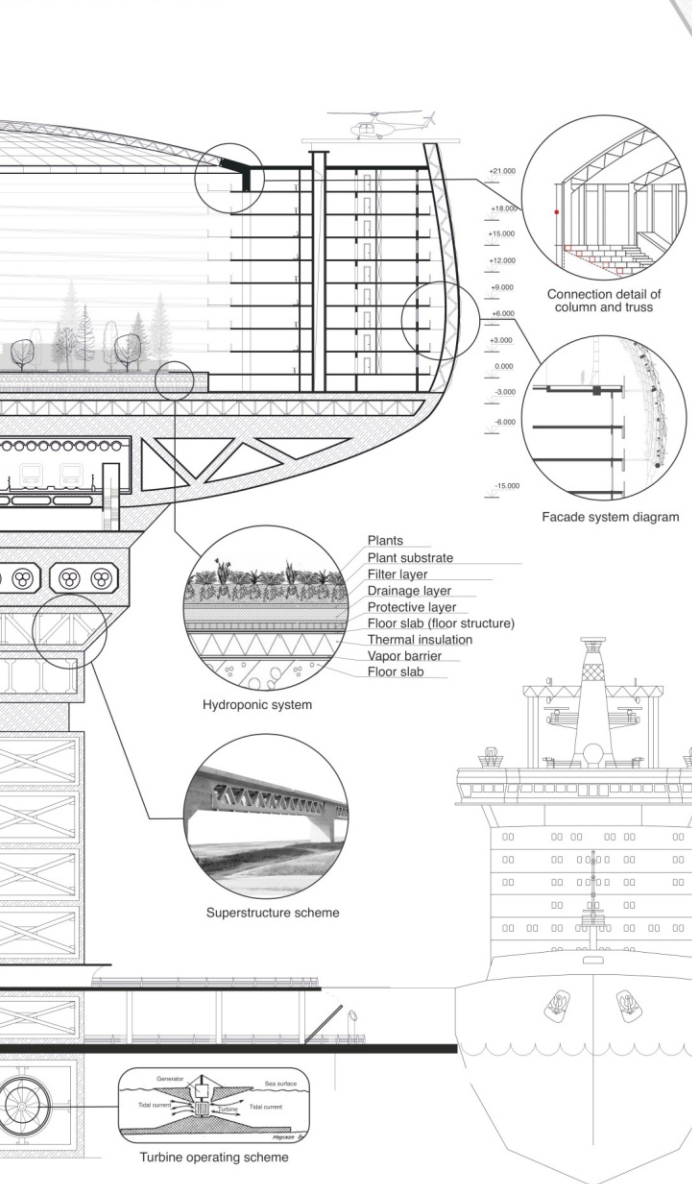
LEGEND FOR THE TYPICAL FLOOR PLAN:

- 1 - Two-room apartments for shift workers
- 2 - Three-room apartments for families
- 3 - Shop
- 4 - Pedestrian path
- 5 - Ramp
- 6 - Bicycle path
- 7 - Parking for scooters and bicycles
- 8 - Charging station for electric scooters

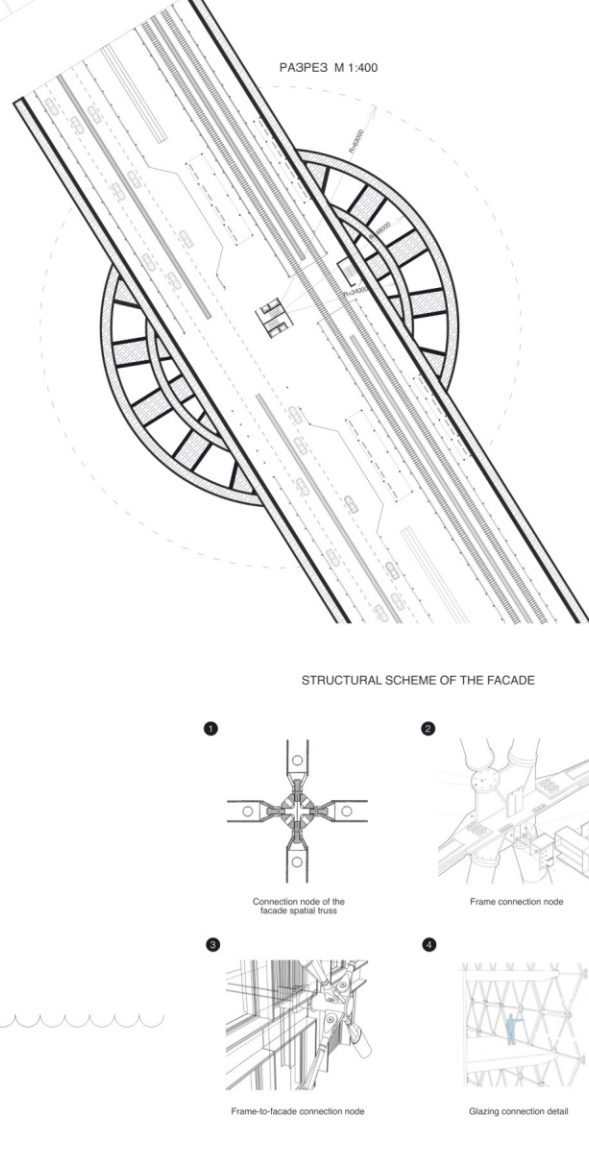
TECHNICAL AND ECONOMIC INDICATORS

- 1. Total area - 125,000 m²
- 2. Usable area - 50,600 m²
- 3. Calculated area - 31,104 m²
- 4. Building footprint area - 12,500 m²
- 5. Construction volume - 1,044,400 m³
- 6. K1 - Planning coefficient - 0,4
- 7. K2 - Volume coefficient - 8,3

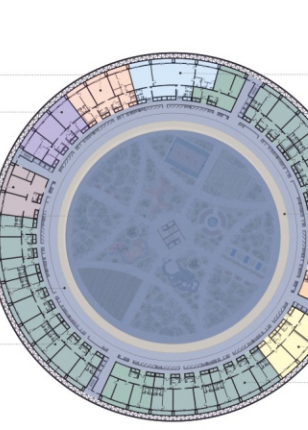
SECTION ALONG AXES 1-1, SCALE 1:200



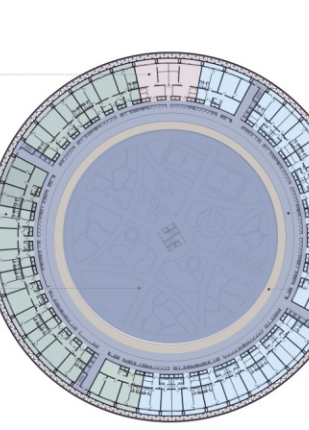
STRUCTURAL SCHEME OF THE FACADE



GROUND FLOOR FUNCTIONAL ZONING DIAGRAM



TYPICAL FLOOR FUNCTIONAL ZONING DIAGRAM



LEGEND:

- Two-room apartments for shift workers
- Shop
- Covering space
- Ramp
- Medical block
- School
- Amenagement
- Pedestrian path
- Sports and fitness area
- Water garden

LEGEND:

- Shops
- Two-room apartments for shift workers
- Water garden
- Three-room apartments for families
- Bicycle path
- Pedestrian path

LAYOUT SCHEME OF A TWO-ROOM APARTMENT FOR SHIFT WORKERS

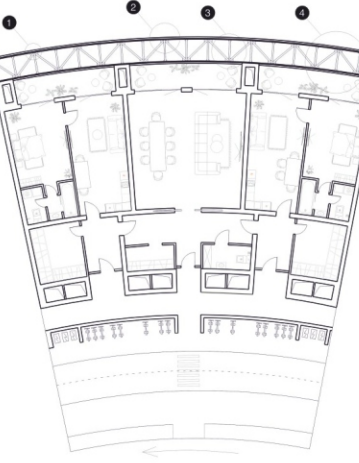
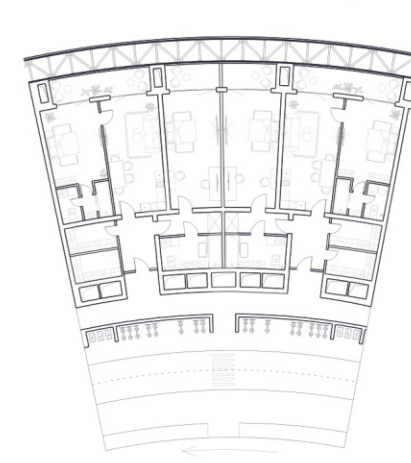
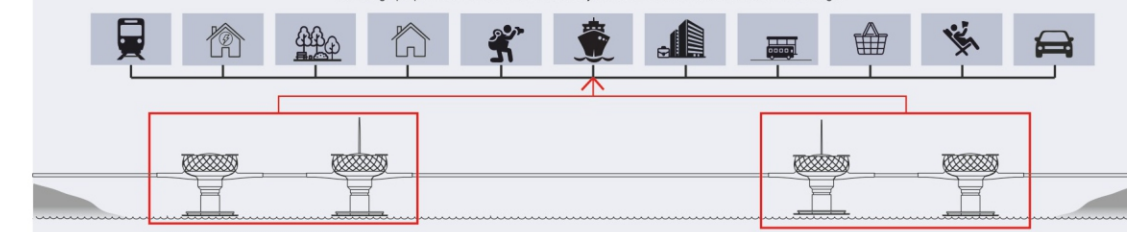


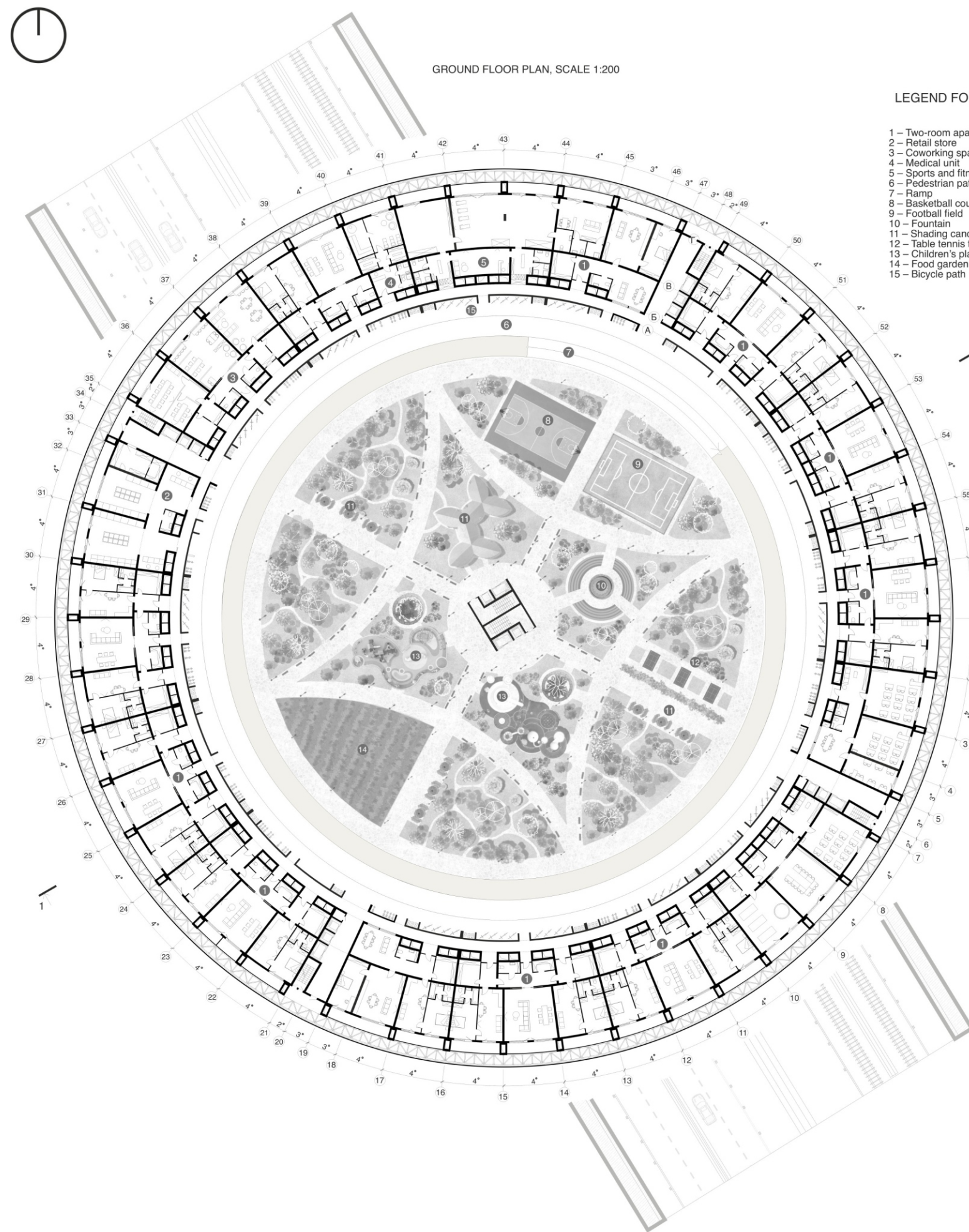
СХЕМА ПЛАНИРОВКИ ТРЕХКОМНАТНОЙ КВАРТИРЫ ДЛЯ СЕМЬИ



CONCLUSION OF CHAPTER 2

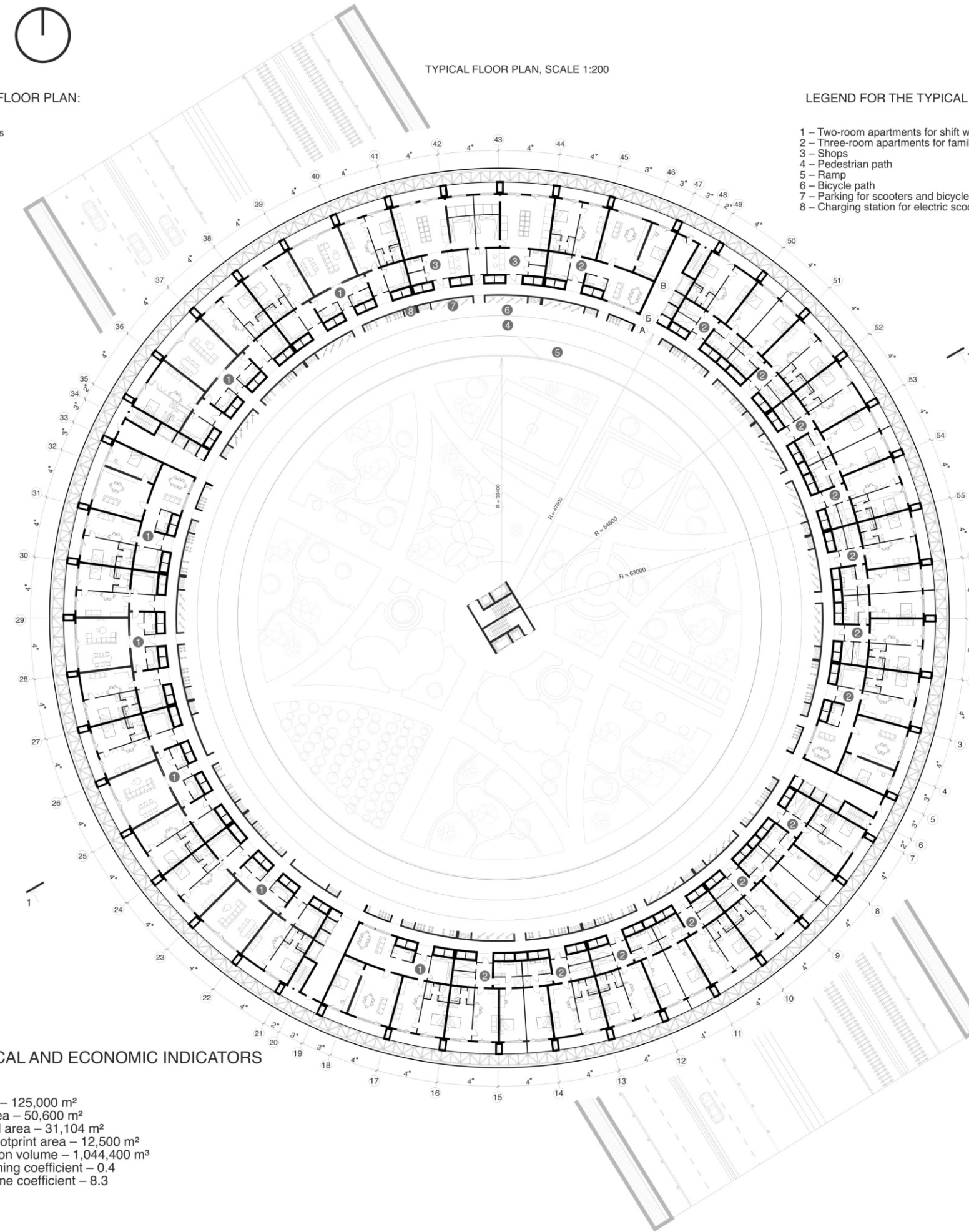
The design proposal combines all the necessary functions of a multifunctional habitable bridge.





LEGEND FOR THE GROUND FLOOR PLAN:

- 1 - Two-room apartments for shift workers
- 2 - Retail store
- 3 - Coworking space
- 4 - Medical unit
- 5 - Sports and fitness block
- 6 - Pedestrian path
- 7 - Ramp
- 8 - Basketball court
- 9 - Football field
- 10 - Fountain
- 11 - Shading canopies and gazebos
- 12 - Table tennis tables
- 13 - Children's playgrounds
- 14 - Food garden
- 15 - Bicycle path



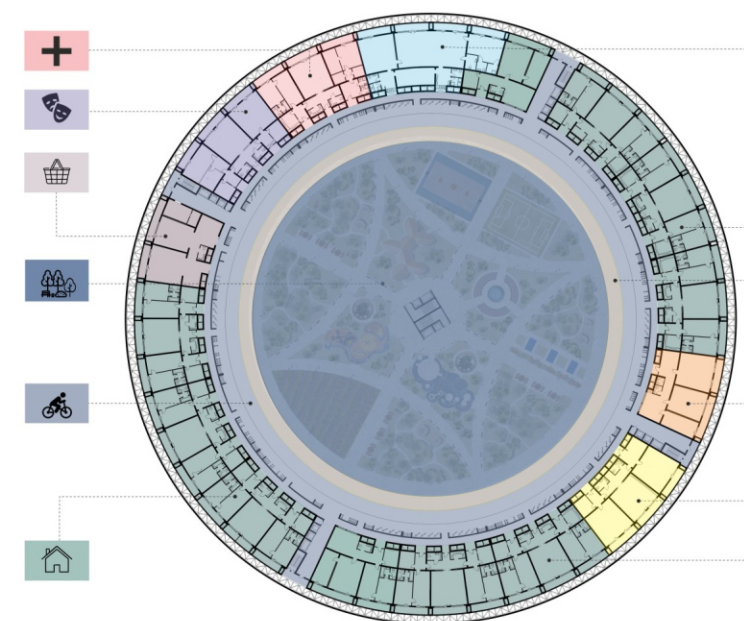
LEGEND FOR THE TYPICAL FLOOR PLAN:

- 1 - Two-room apartments for shift workers
- 2 - Three-room apartments for families
- 3 - Shops
- 4 - Pedestrian path
- 5 - Ramp
- 6 - Bicycle path
- 7 - Parking for scooters and bicycles
- 8 - Charging station for electric scooters

TECHNICAL AND ECONOMIC INDICATORS

- 1. Total area - 125,000 m²
- 2. Usable area - 50,600 m²
- 3. Calculated area - 31,104 m²
- 4. Building footprint area - 12,500 m²
- 5. Construction volume - 1,044,400 m³
- 6. K1 - Planning coefficient - 0.4
- 7. K2 - Volume coefficient - 8.3

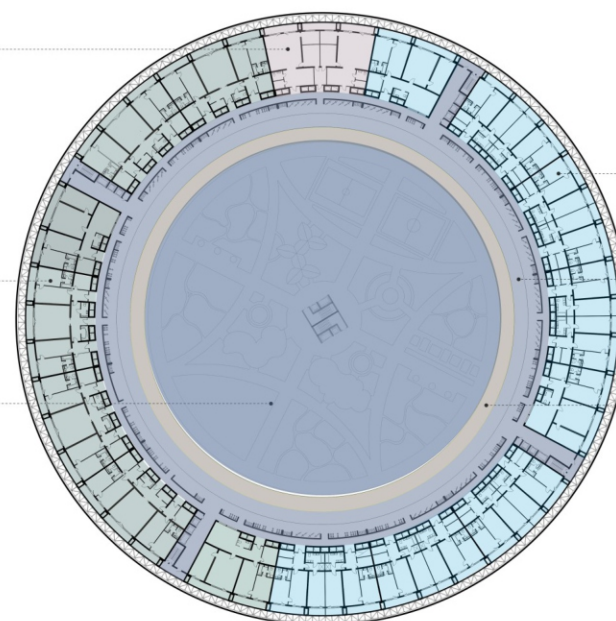
GROUND FLOOR FUNCTIONAL ZONING DIAGRAM



LEGEND:

- Two-room apartments for shift workers
- Shops
- Coworking space
- Bicycle path
- Medical block
- School
- Kindergarten
- Pedestrian path
- Sports and fitness area
- Winter garden

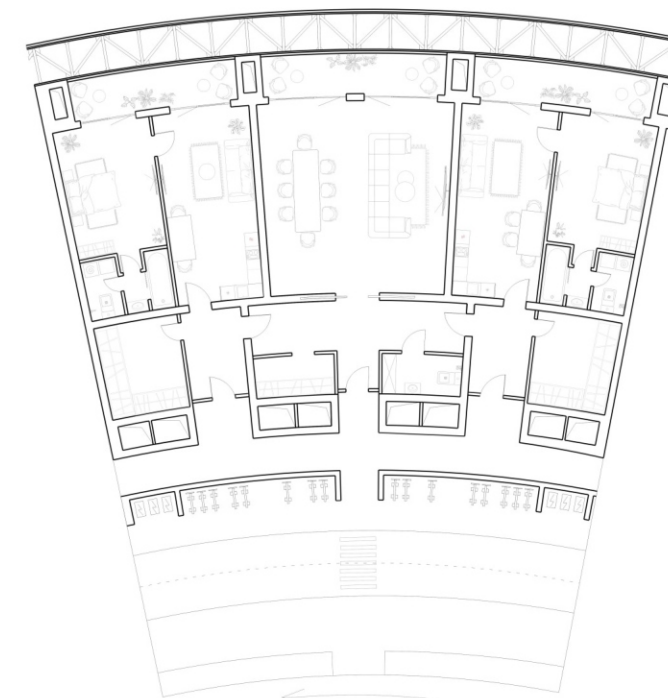
TYPICAL FLOOR FUNCTIONAL ZONING DIAGRAM



LEGEND:

- Shops
- Two-room apartments for shift workers
- Winter garden
- Three-room apartments for families
- Bicycle path
- Pedestrian path

LAYOUT SCHEME OF A TWO-ROOM APARTMENT FOR SHIFT WORKERS



THREE-BEDROOM FAMILY APARTMENT LAYOUT

