

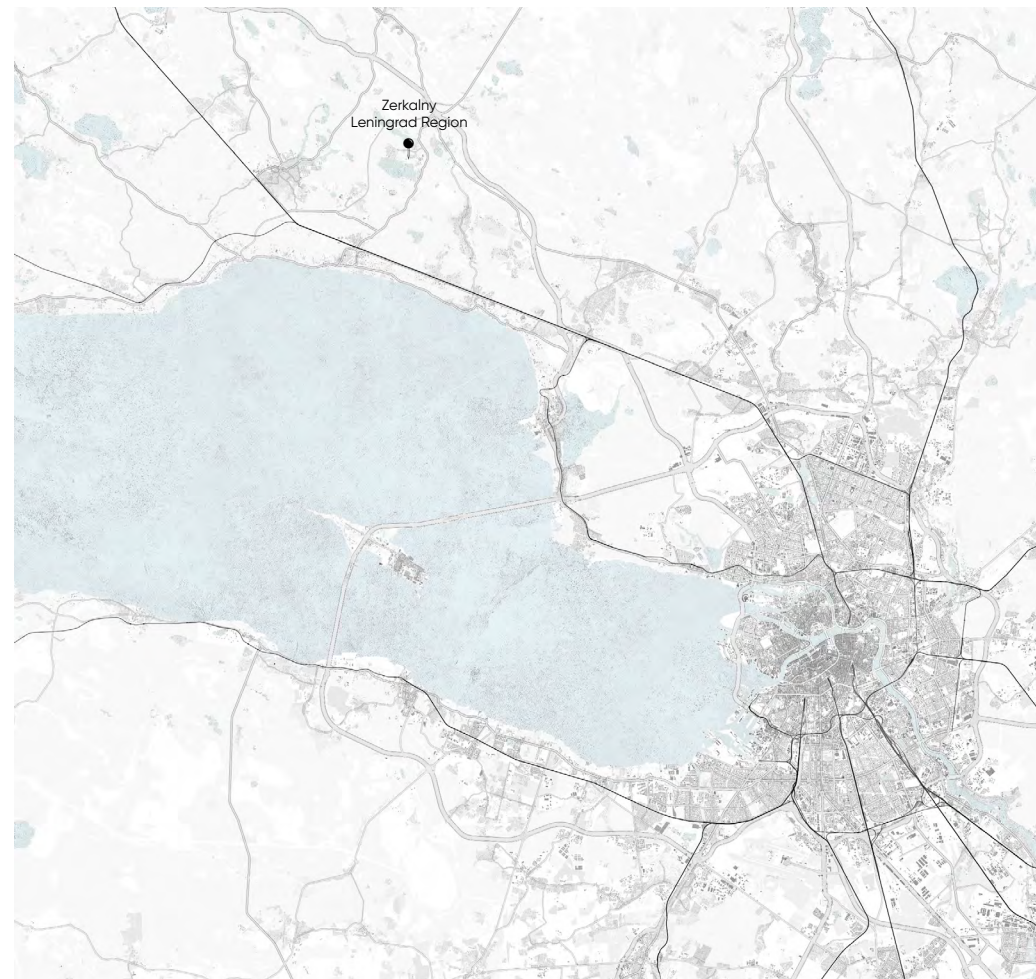


Elementary School

Learning Resources Center & Canteen

Greenhouse and botanical garden

Middle and high school

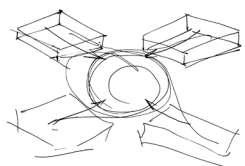


 **18321,18 m²**
Total area

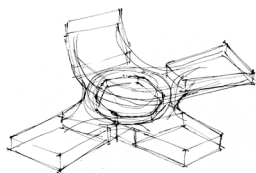
 **14**
Educational programs

 **5,38 ha**
Plot area

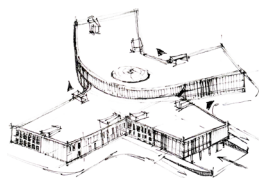
 **960 students**
children from 6 to 18 years old



formation of four functional blocks and a connecting core



refining the shape of the blocks, rounding the volumes connecting the blocks



search for facade solutions, formation of entrance groups

The center for additional education is harmoniously inscribed into the natural landscape of a pine forest on the shore of Lake Zerkalnoye in the Leningrad Region. The multifunctional educational environment contributes to the comprehensive development of the child, their creative and scientific potential.

The project aims to create a unique educational environment in which learning will take place through educational sessions involving the students' continuous stay at the center. The modern format requires flexible spaces, alternating active study and rest.