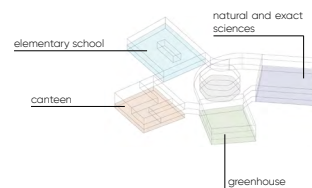


First Floor Plan at Elevation ±0.000

Placement of educational spaces on the first floor

Panoramic glazing erases the boundary between the building and the forest, fills classrooms with light, and creates a comfortable and inviting atmosphere for learning.



On the first floor, in addition to classrooms, there are public spaces and a focal atrium. Stairs lead to the cafeteria and information-library center located on the intermediate floors.