

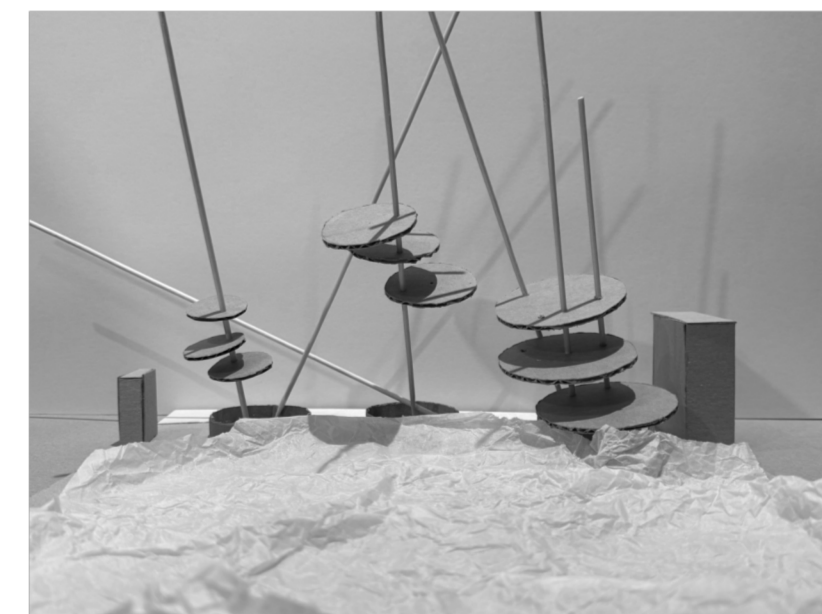
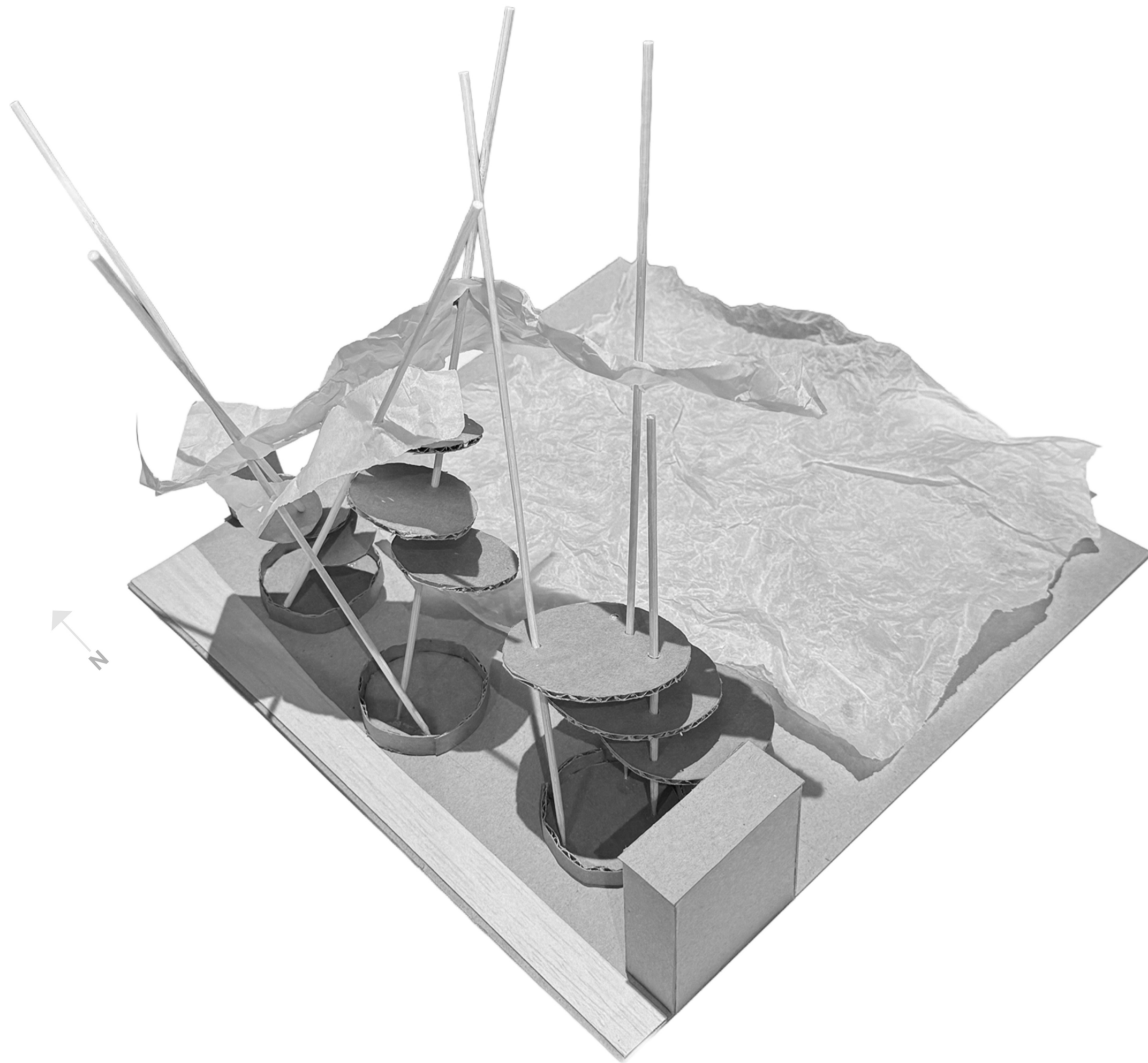


WELSH BACK,
ALONGSIDE RIVER AVON

51°27'07.2"N 2°35'33.1"W



SITE MAP //

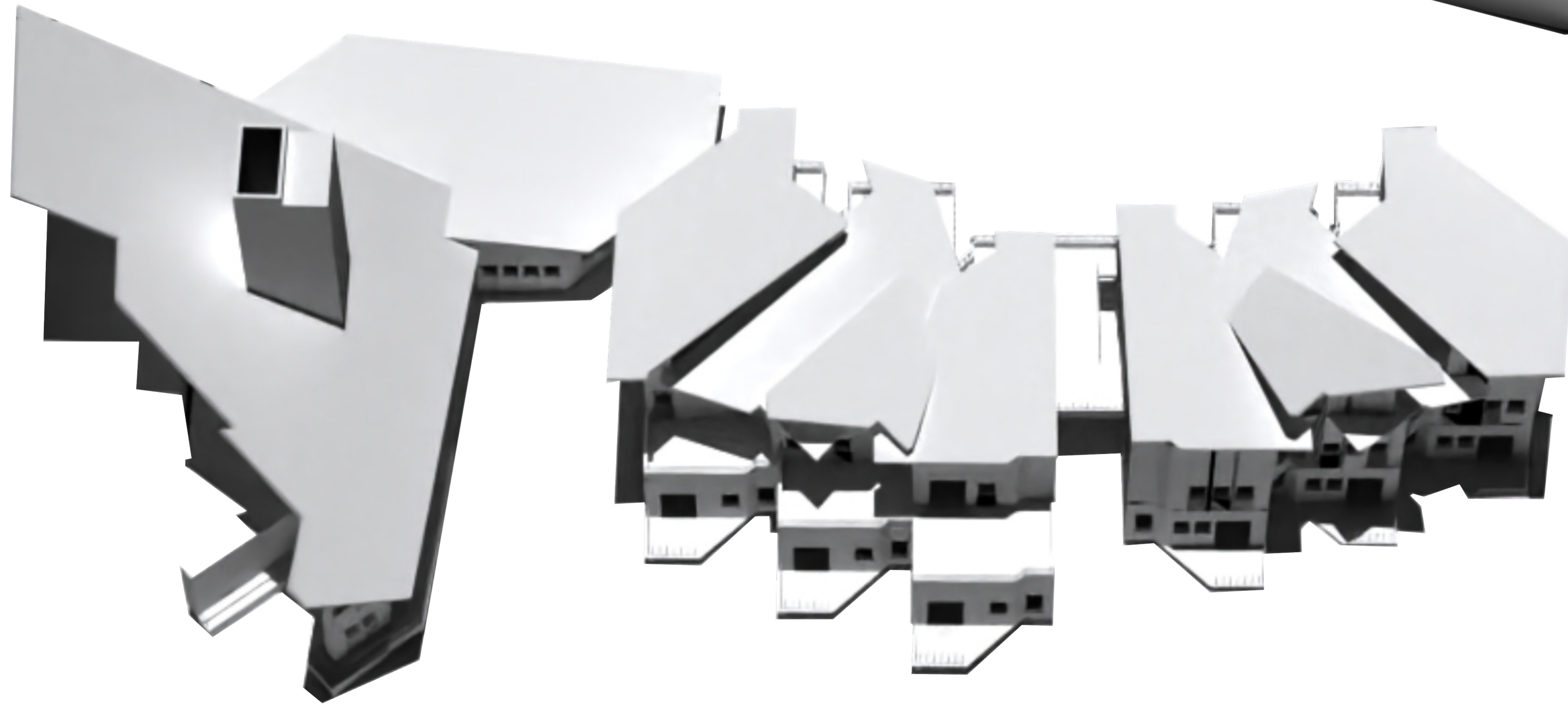
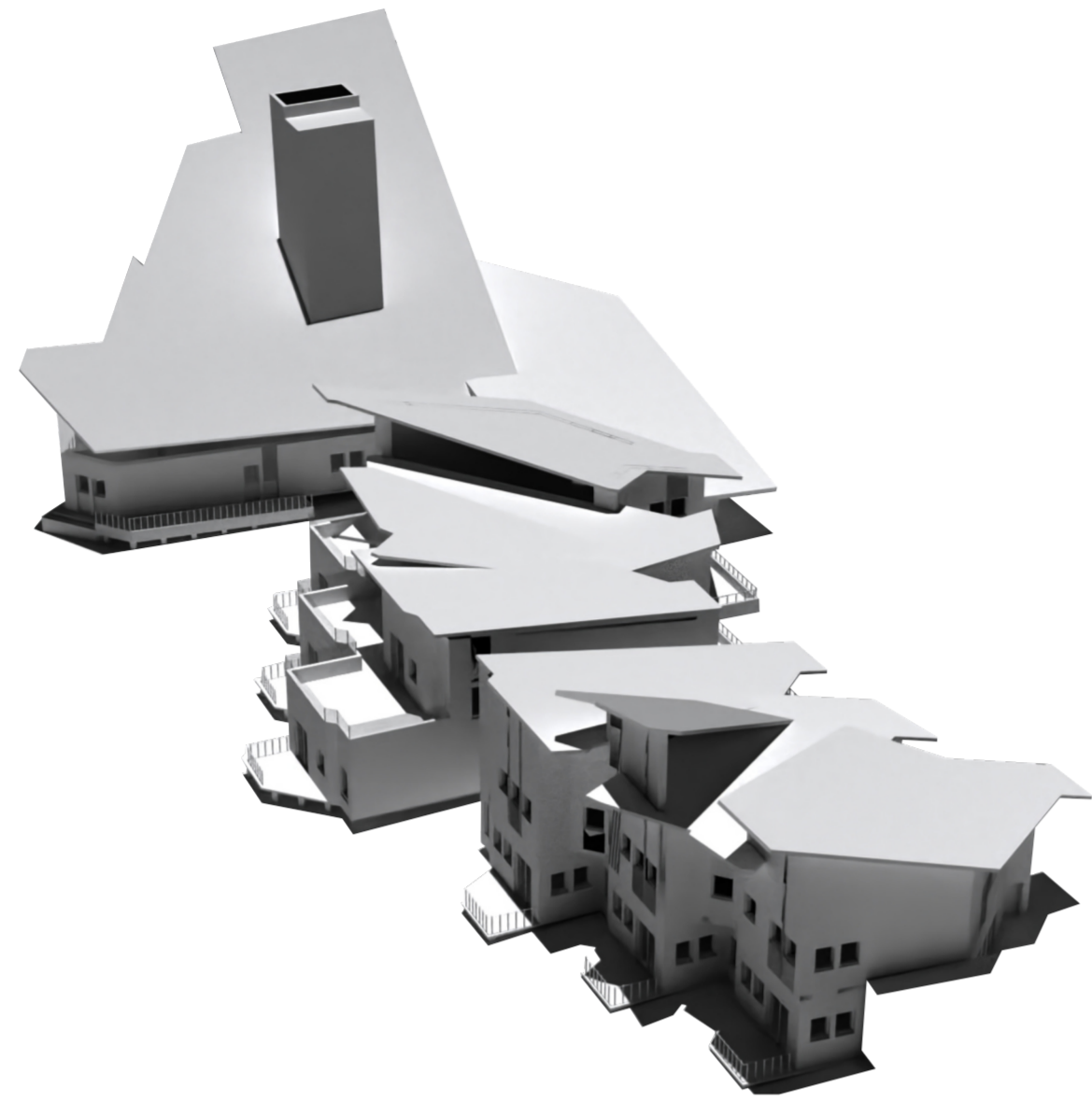


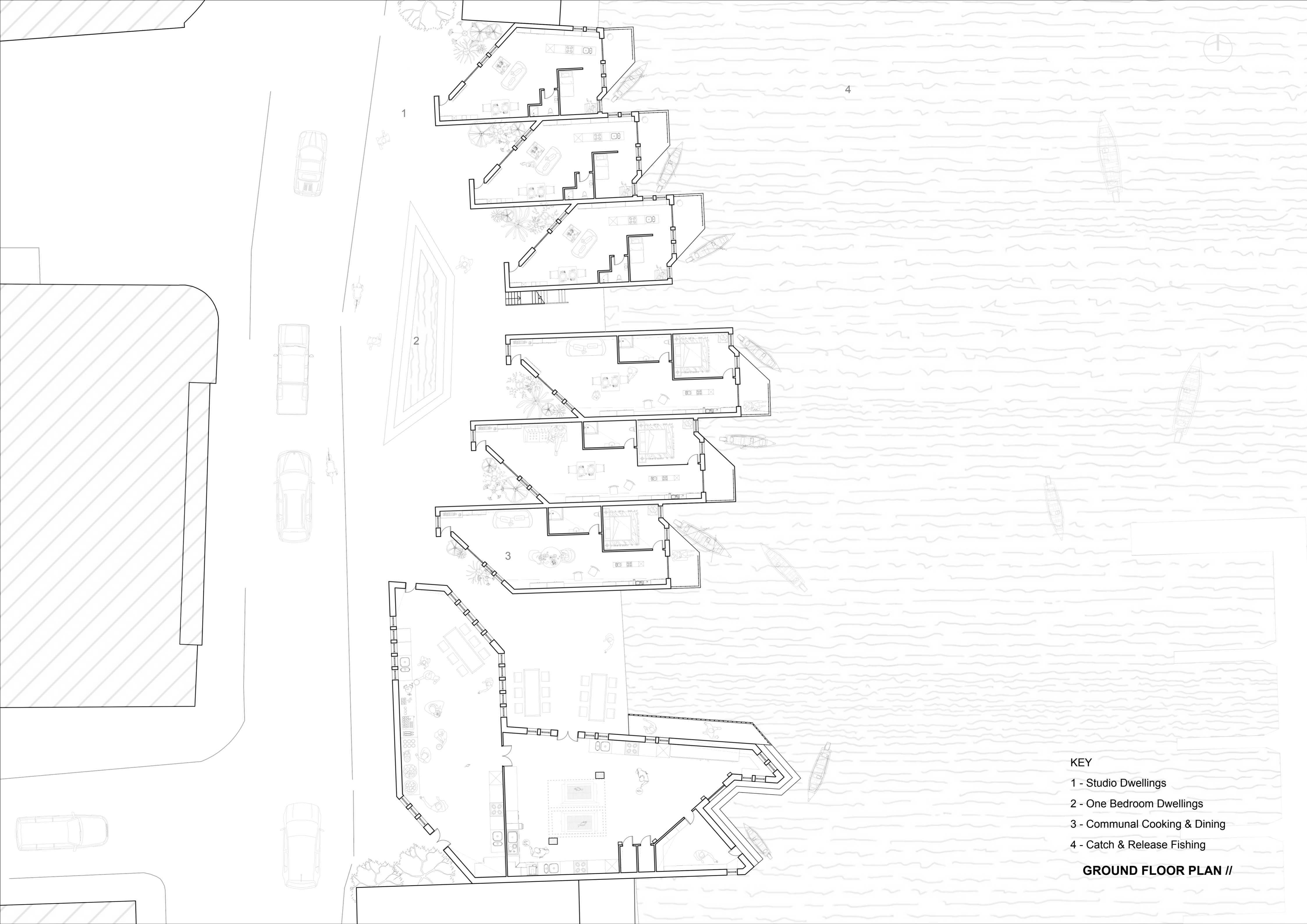
INSPIRED BY THE ARRANGEMENT OF FISH SCALES, WATER EDGE LOCATION AND BRISTOL RIVERS WHERE THE FISHERMEN FISH.

IT IS ALSO AN IDEA OF HOW I CAN ARRANGE MY DWELLING TYPES ALONG THE NARROW SITE. THE WATER IS NOT SHOWN AS A FLAT PLANE, BUT AS SOMETHING THAT IS ALWAYS IN MOTION. SOMETHING I WANT TO SHOW IN MY DESIGN PROPOSAL.



VIEW FROM THE RIVER
(TIMBER INTERIOR KITCHEN, FISHING
WINDOW & FISH SCALE EXTERIOR CLADDING)





1

2

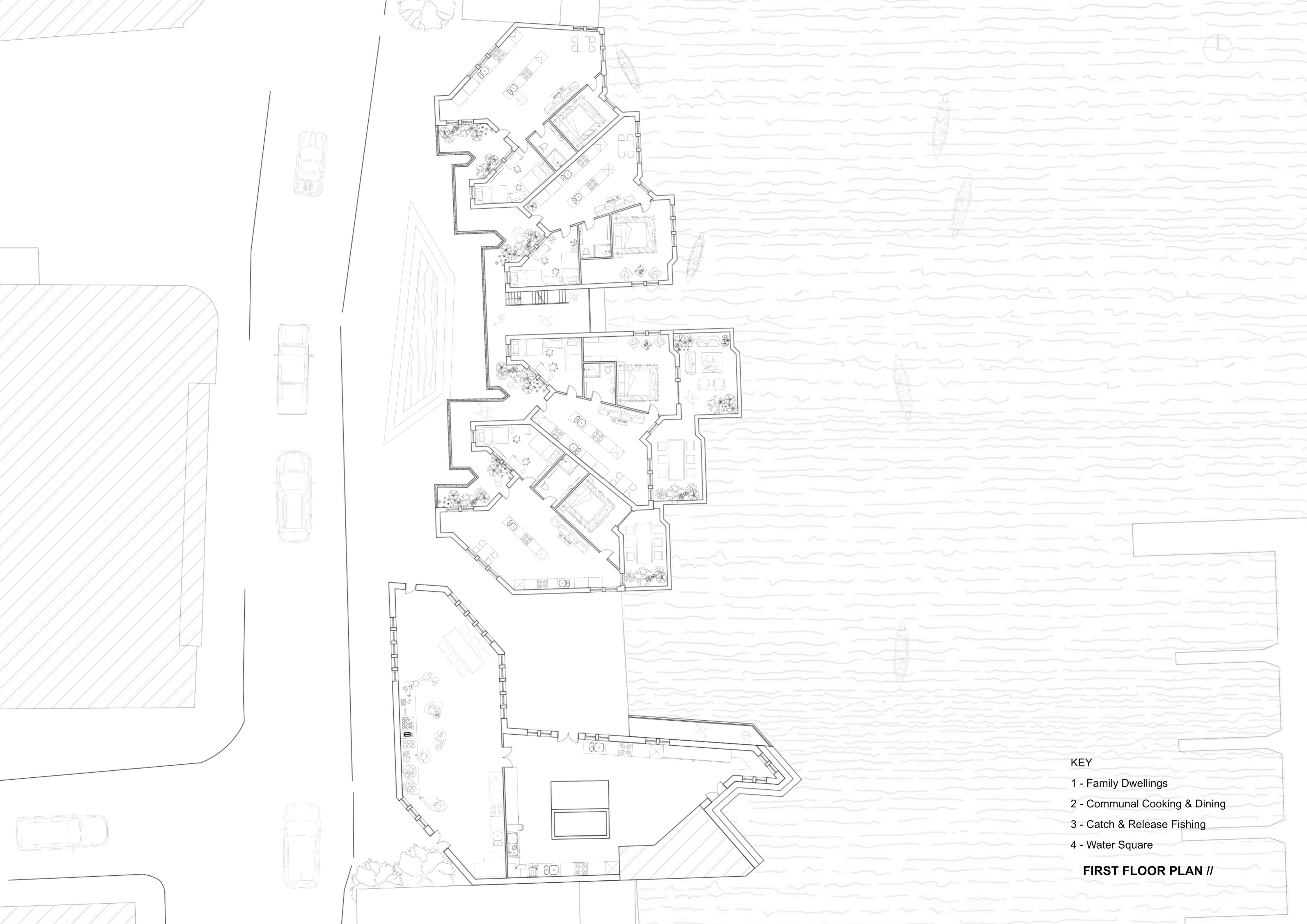
3

4

KEY

- 1 - Studio Dwellings
- 2 - One Bedroom Dwellings
- 3 - Communal Cooking & Dining
- 4 - Catch & Release Fishing

GROUND FLOOR PLAN //

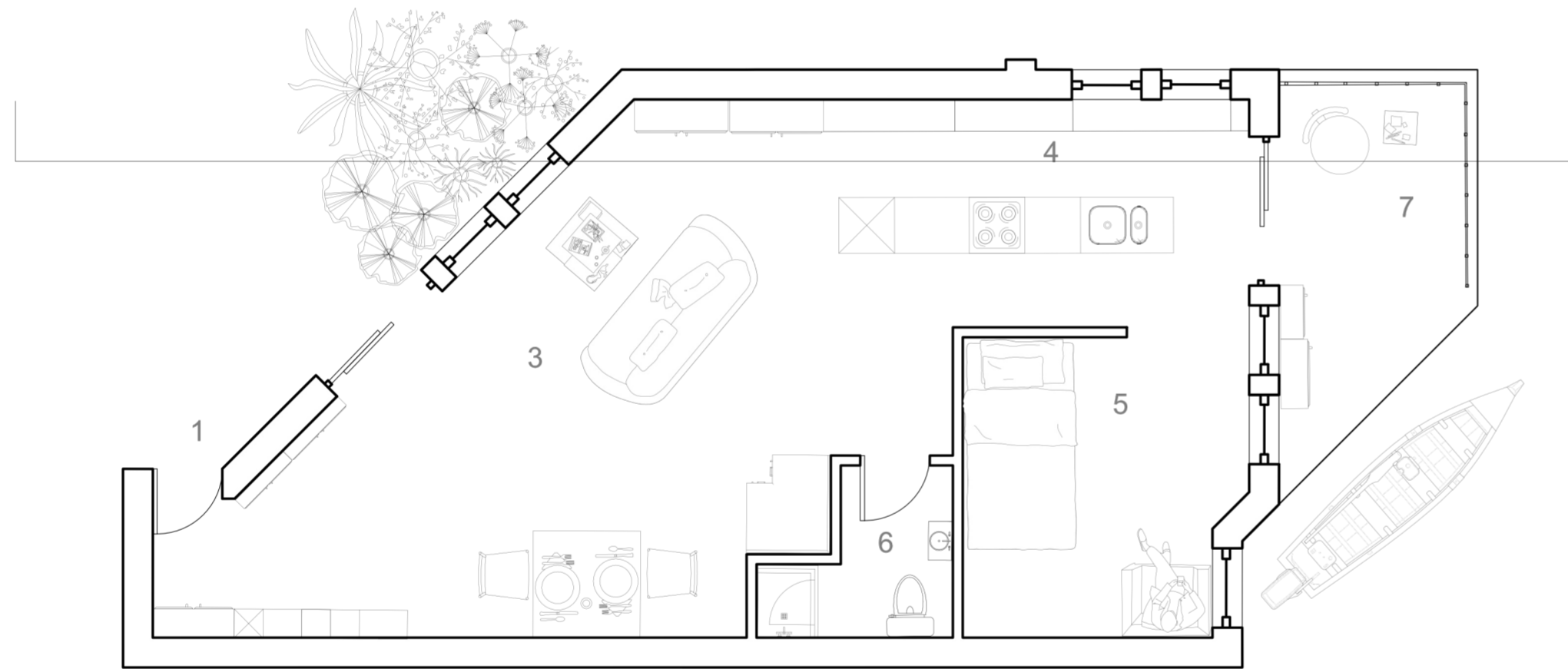


KEY

- 1 - Family Dwellings
- 2 - Communal Cooking & Dining
- 3 - Catch & Release Fishing
- 4 - Water Square

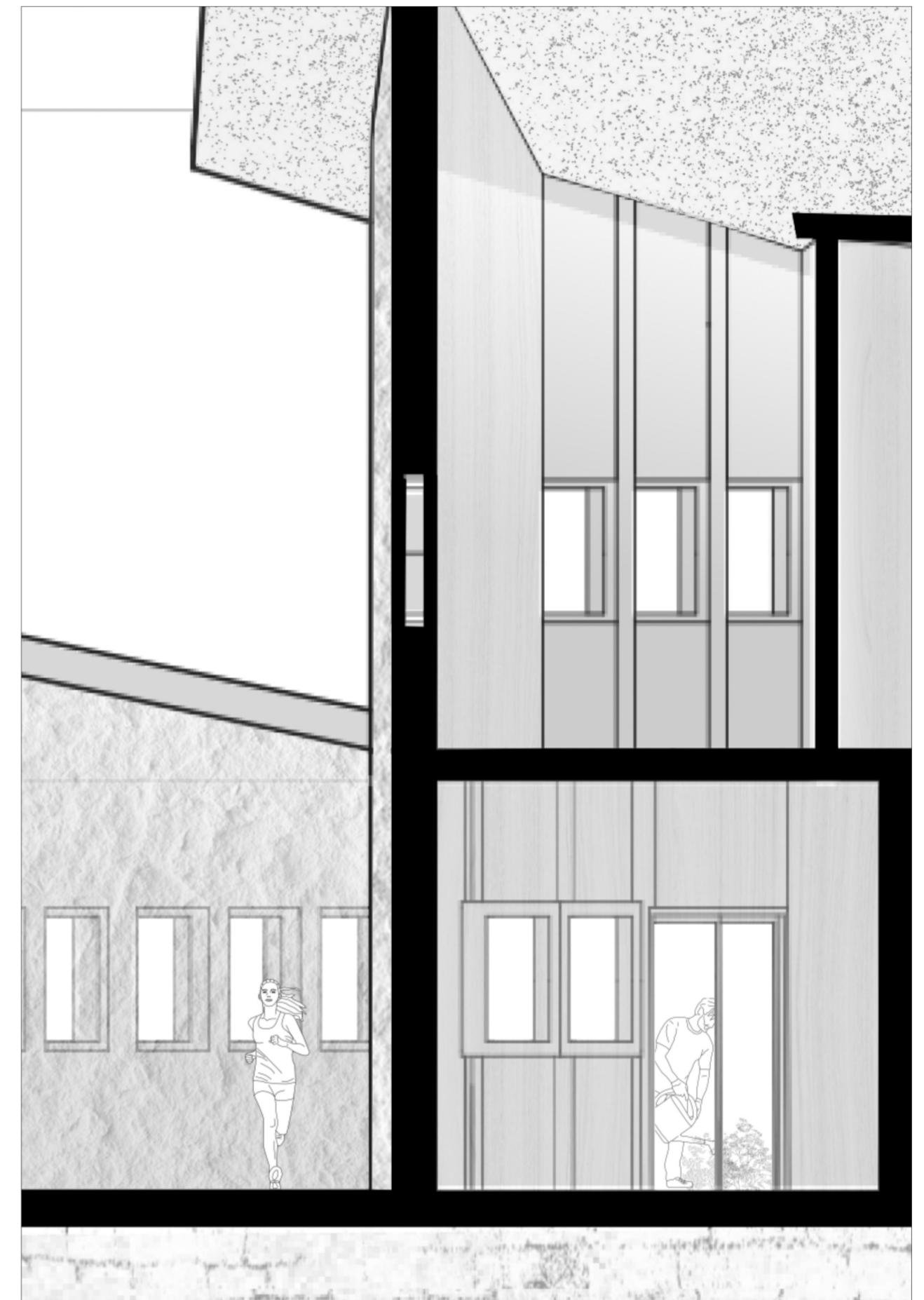
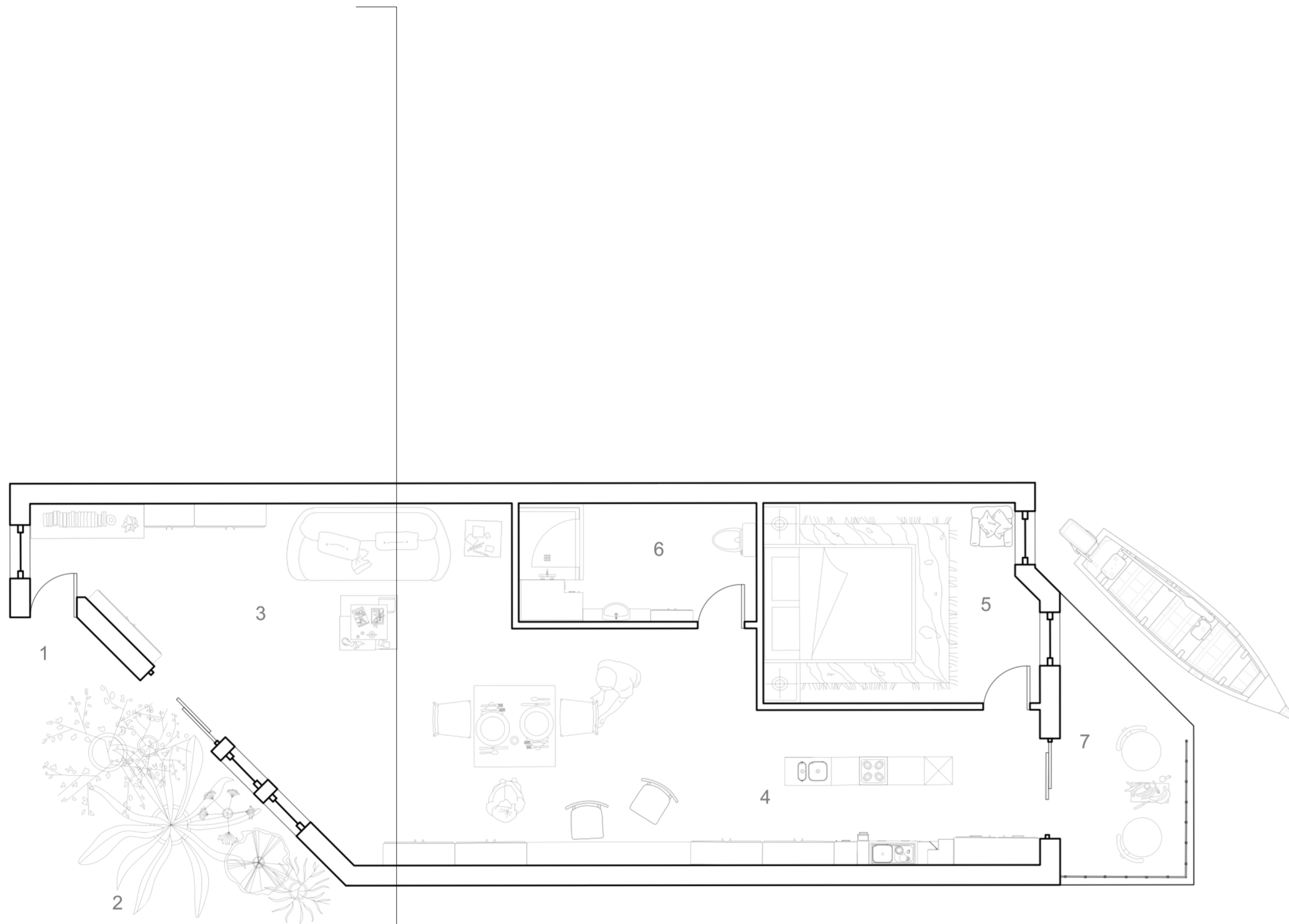
FIRST FLOOR PLAN //





- KEY
- 1 - Entrance
 - 2 - Herbs Garden
 - 3 - Living Space
 - 4 - Kitchen
 - 5 - Bedroom
 - 6 - Bathroom
 - 7 - Fishing Dock

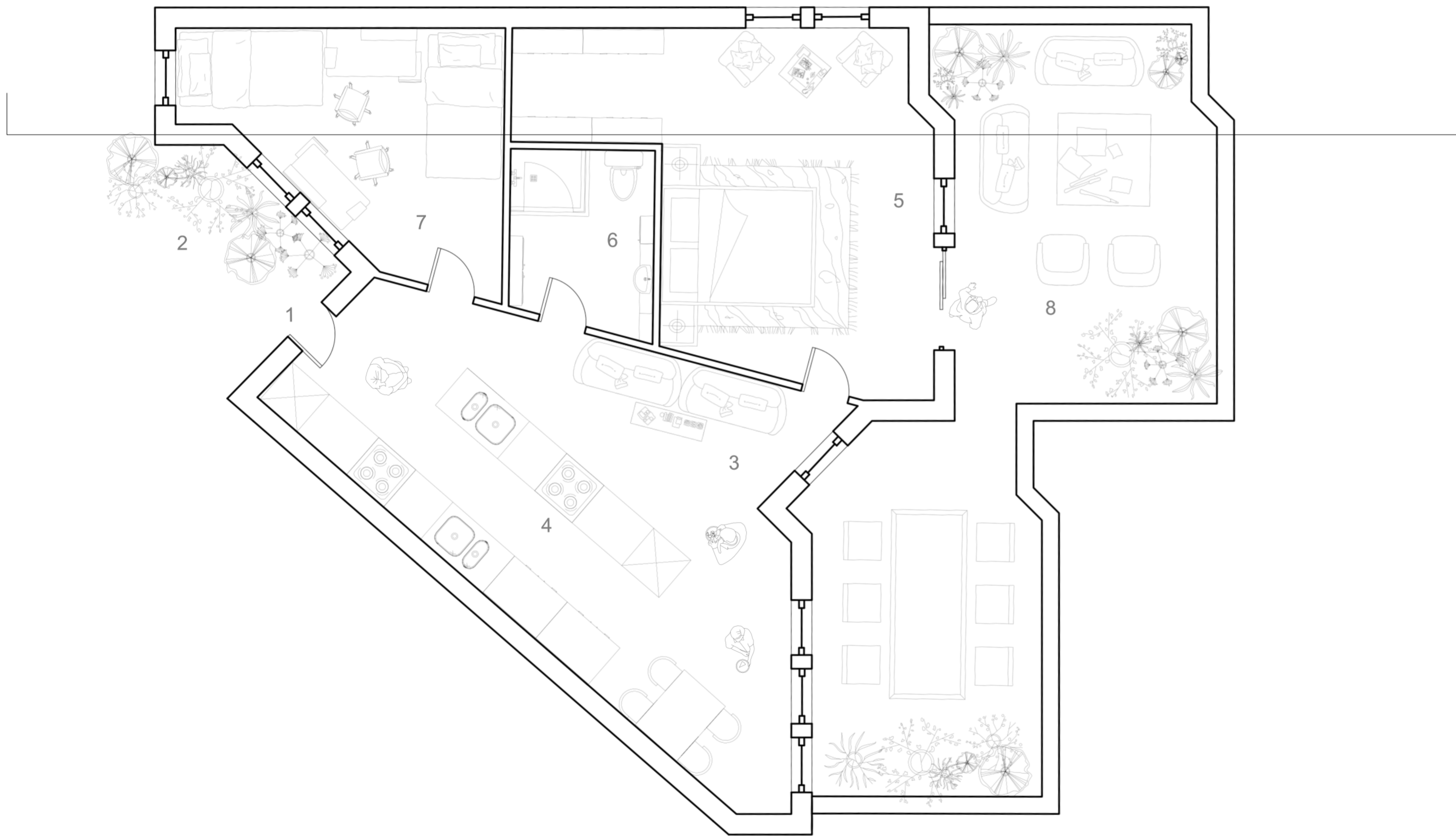




KEY

- 1 - Entrance
- 2 - Herbs Garden
- 3 - Living Space
- 4 - Kitchen
- 5 - Bedroom
- 6 - Bathroom
- 7 - Fishing Dock

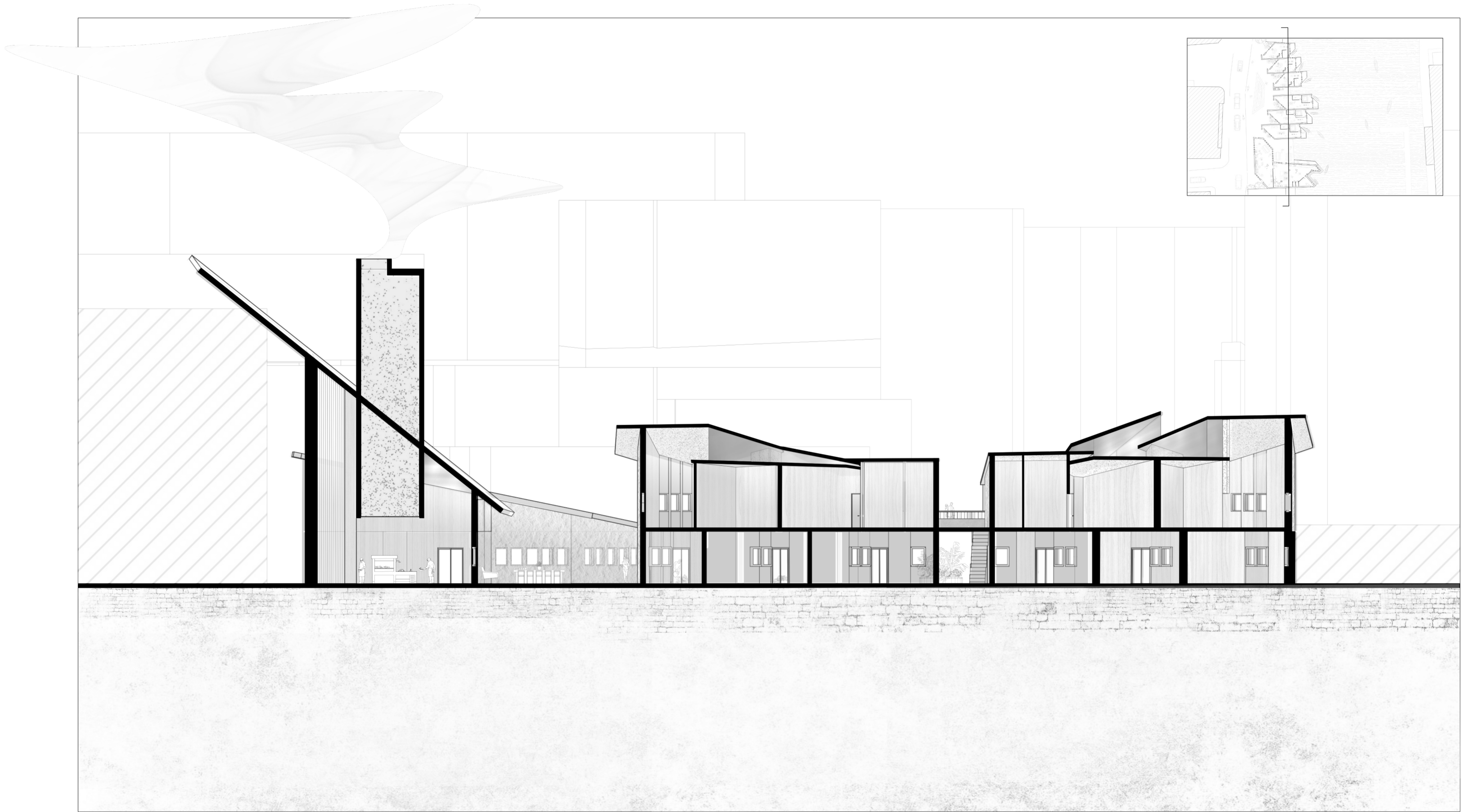
ONE BEDROOM PLAN //



KEY

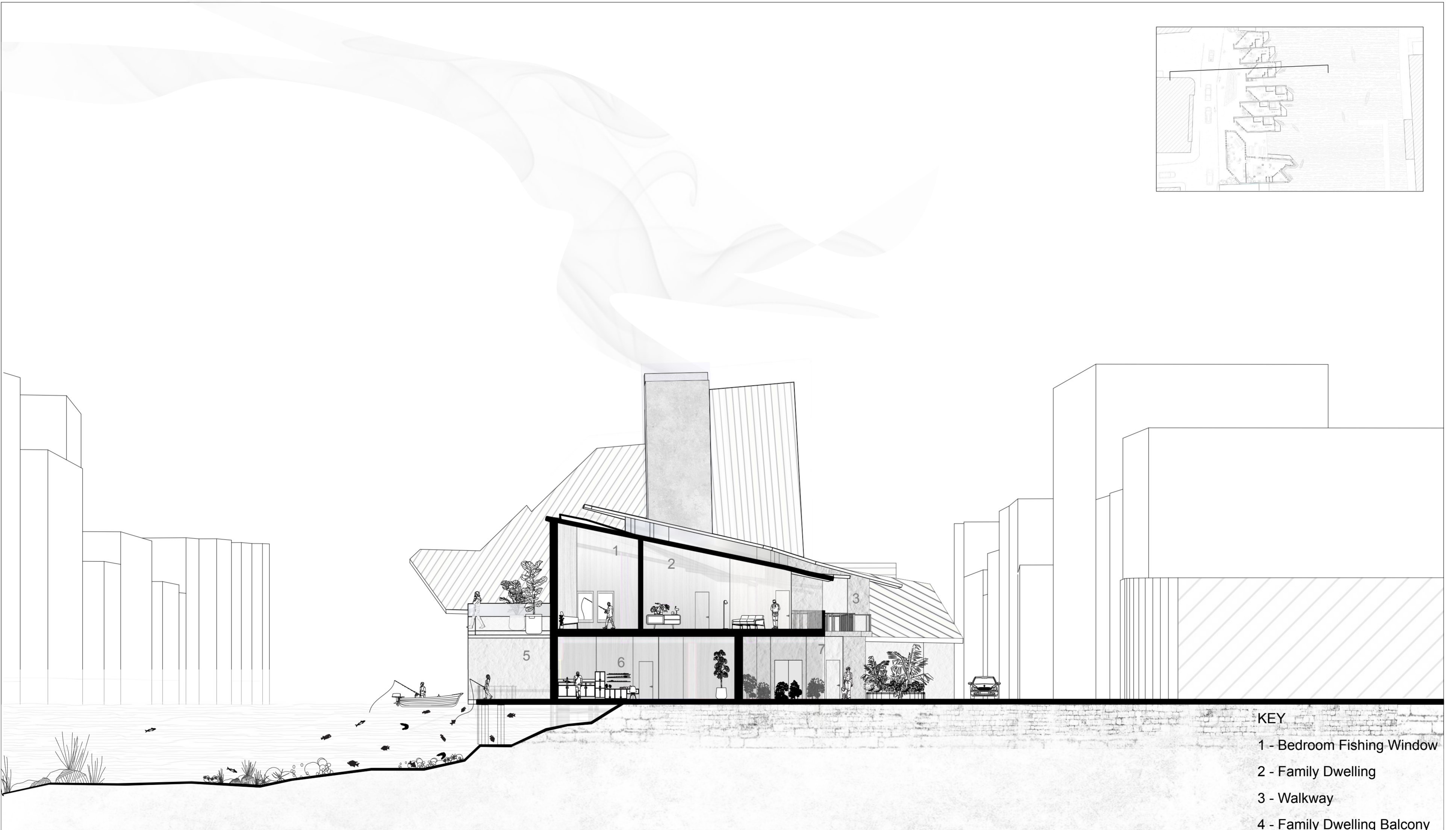
- 1 - Entrance
- 2 - Herbs Garden
- 3 - Living Space
- 4 - Kitchen
- 5 - Bedroom
- 6 - Bathroom
- 7 - Kids Bedroom
- 8 - Balcony overlooking the water





0 1 2 3 4 5 6 7 8 9 10

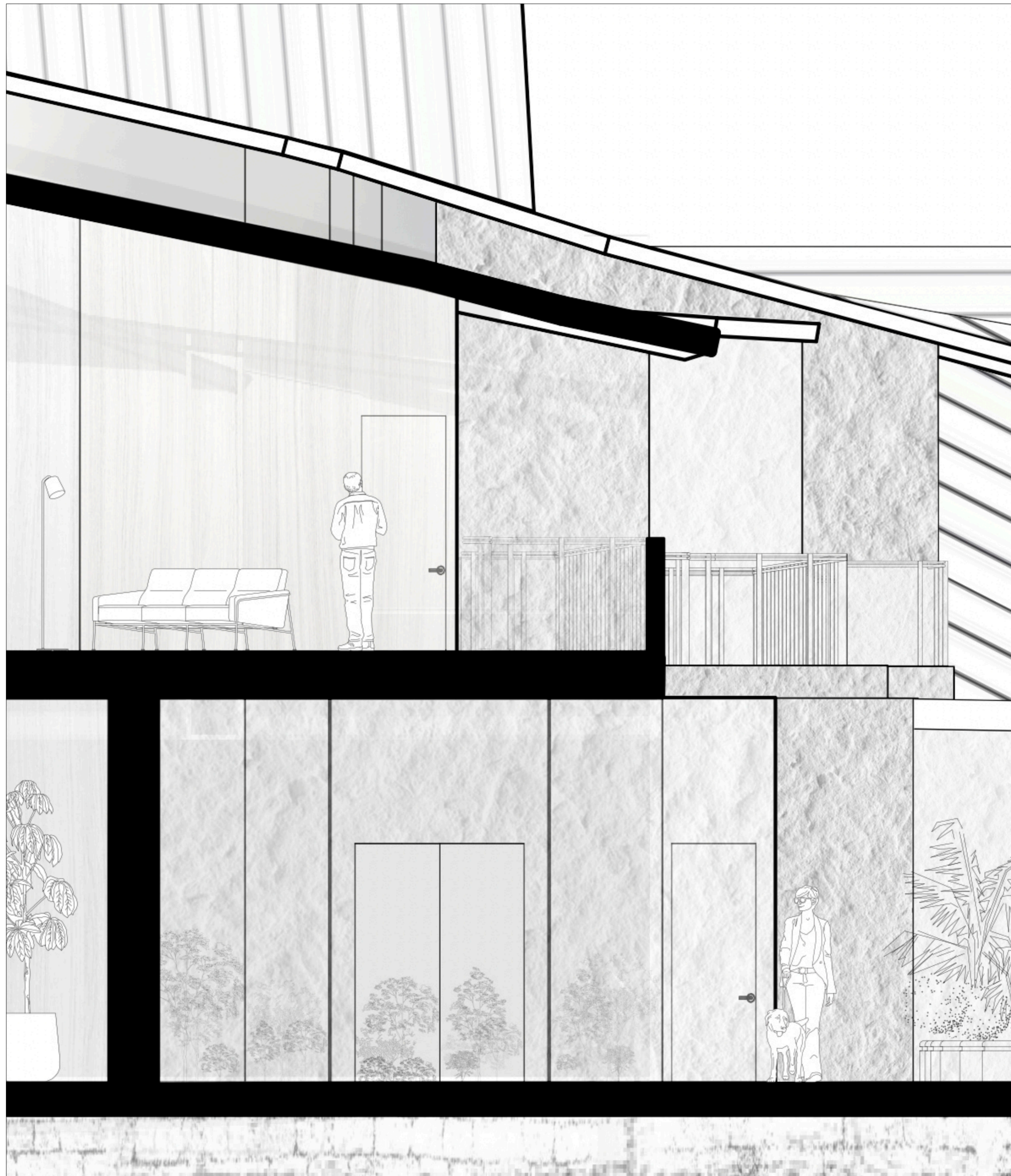
LONG PERSPECTIVE SECTION //

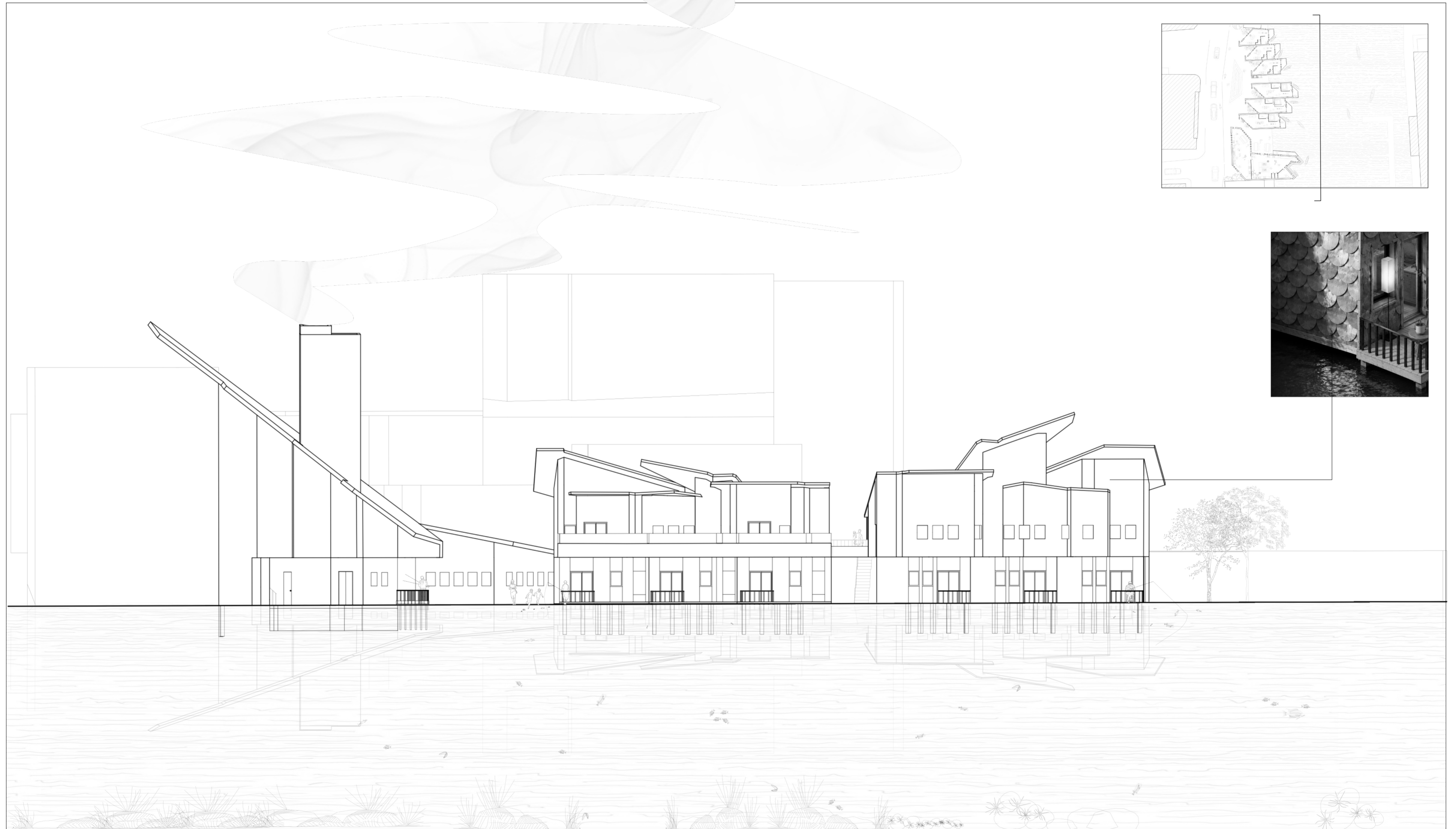


- KEY
- 1 - Bedroom Fishing Window
 - 2 - Family Dwelling
 - 3 - Walkway
 - 4 - Family Dwelling Balcony
 - 5 - Studio Dwelling Dock
 - 6 - Studio Dwelling Kitchen
 - 7 - Studio Dwelling Herbs Garden

0 1 2 3 4 5 6 7 8 9 10

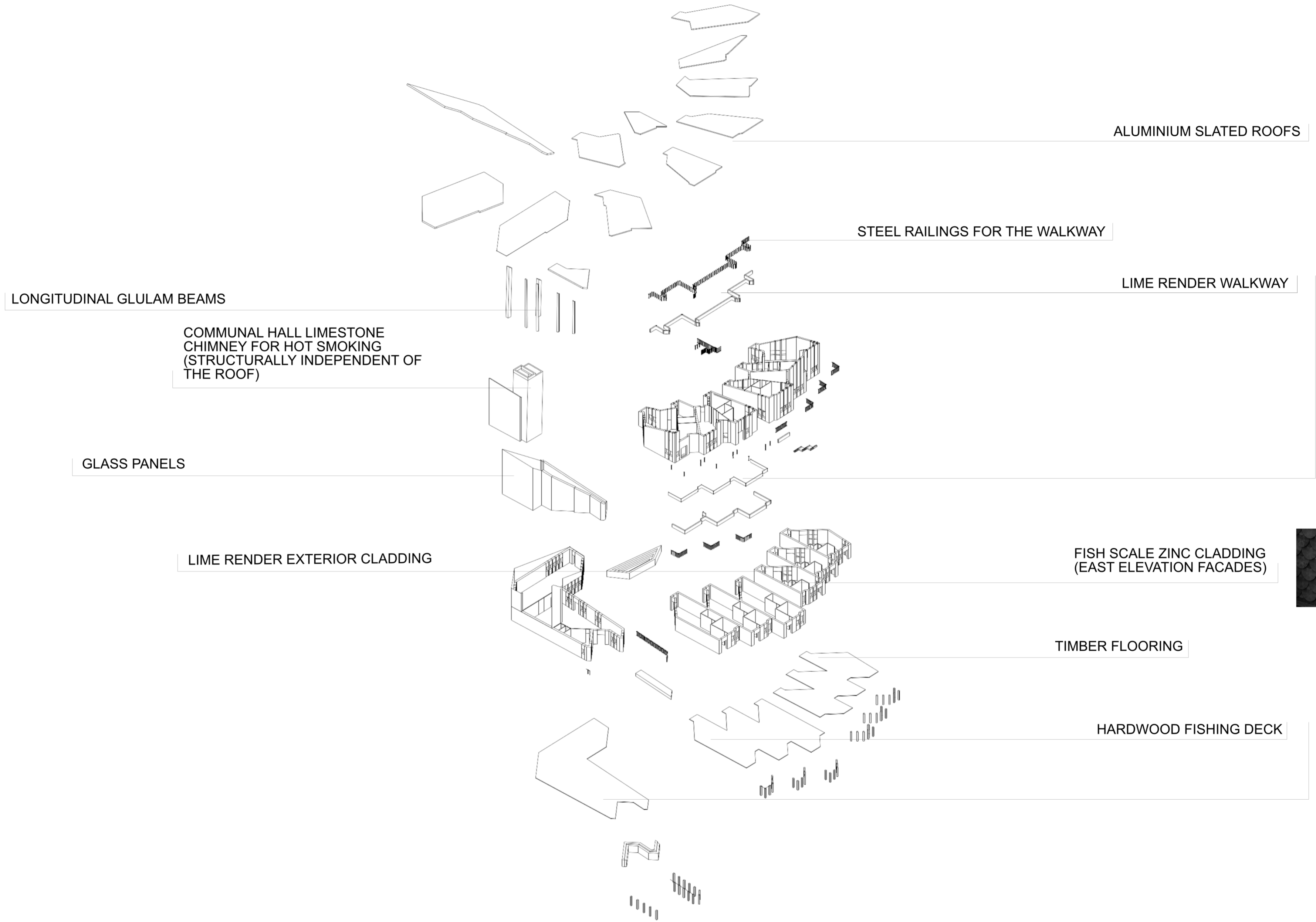
SHORT PERSPECTIVE SECTION //





0 1 2 3 4 5 6 7 8 9 10

LONG ELEVATION //







FAMILY BALCONY //