

JESSICA ZAKARIA

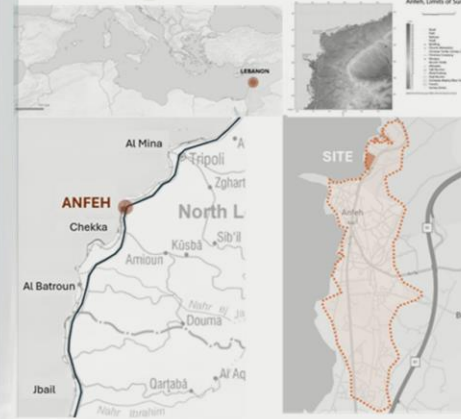


Scan me!

A MARITIME CULTURAL NEXUS

مَرْسِي POLARIS

GUIDE | NAVIGATE | EMPOWER



SITE

MARITIME CULTURAL

ARCHAEOLOGICAL RUINS • NEXUS • HISTORICAL SALT MARSHES

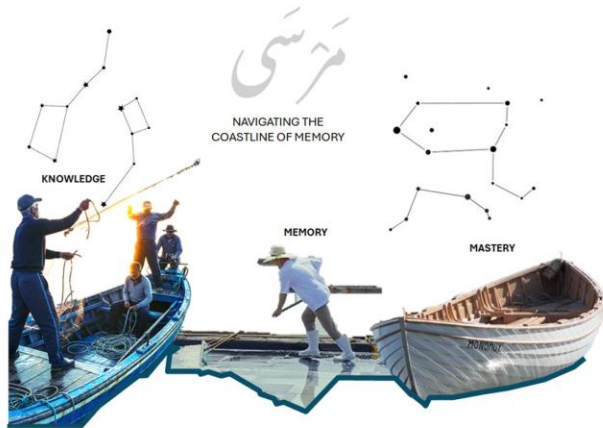
ANFEH TOWN

PROJECT AIM

- MODERN INDUSTRIAL SOCIETY
- OVERFISHING
- URBAN DEVELOPMENT
- ECONOMIC PRESSURE
- PRIDE
GENERATIONAL KNOWLEDGE
CULTURE
HISTORY
TRADITION
RITUAL

«من ههمل البحر تاه، ومن شهرو وهدر ساه»

Hanna, as a place of anchoring and settlement, is redefined as a space that makes maritime labor visible and restores recognition to those who practice it. Hanna becomes a site of acknowledgment for inherited knowledge and forgotten crafts, and a foundation for reclaiming pride and dignity of seafarers within a contemporary coastline.



مَرَسِي
NAVIGATING THE
COASTLINE OF MEMORY

KNOWLEDGE

MEMORY

MASTERY

المراكبة is more than following directions — it is knowledge, memory, and mastery. In Anfeh, fishermen, boatbuilders, and salt workers have navigated the sea for generations, reading stars, currents, and horizons. Every boat painted, every channel shaped, every salt pan tended is a testament to skill, perseverance, and pride.



FISHERMEN
Read Stars for direction
Move through wind
Following Birds



SALT MARSHES WORKERS
Observe Tides
Read Sun angles
Worked on seasonal Memory



BOAT BUILDERS
Study Response to sea
Understand wave patterns

HISTORICAL
SHIPYARD
ACROSS
CIVILIZATIONS

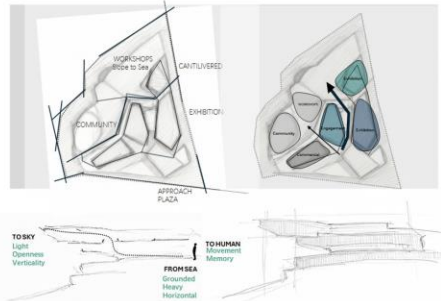
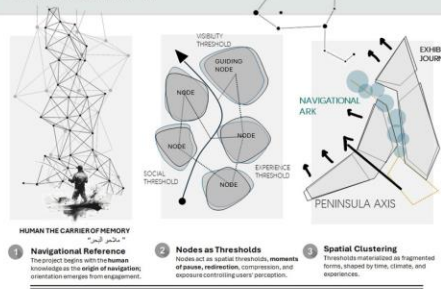
FISHERMEN
LEGACY
THAT HAS
BEEN
STRUGGLING

HISTORIC
SALTWORK
AND
TRADITIONAL
WIND PUMPS

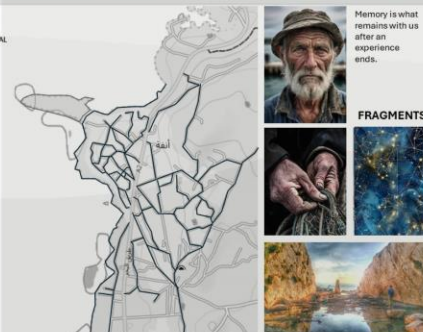
NEED OF REVIVAL
AND
EMPOWERMENT

عندك بيرة يا ريس ...
والبر كويس يا ريس ...

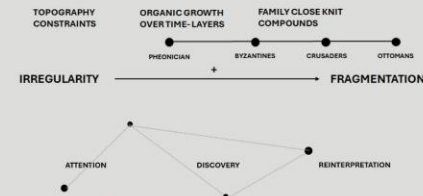
CONCEPT



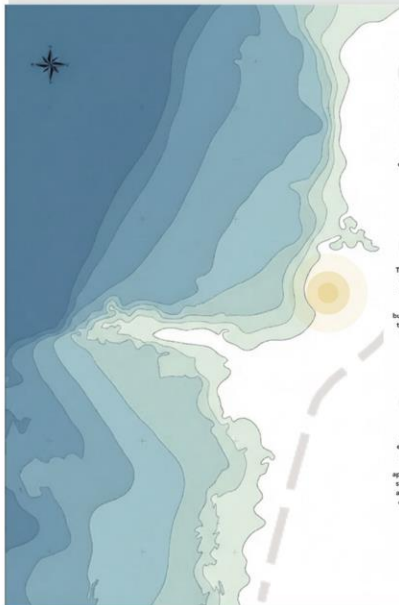
WAY OF THOUGHT



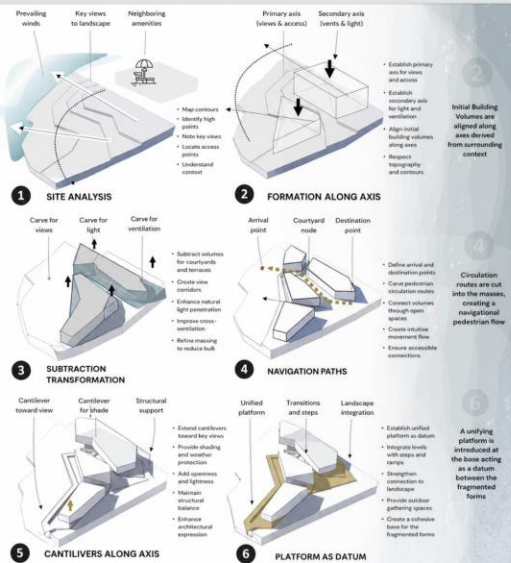
WHY ANFEH URBAN FABRIC IS IRREGULAR?

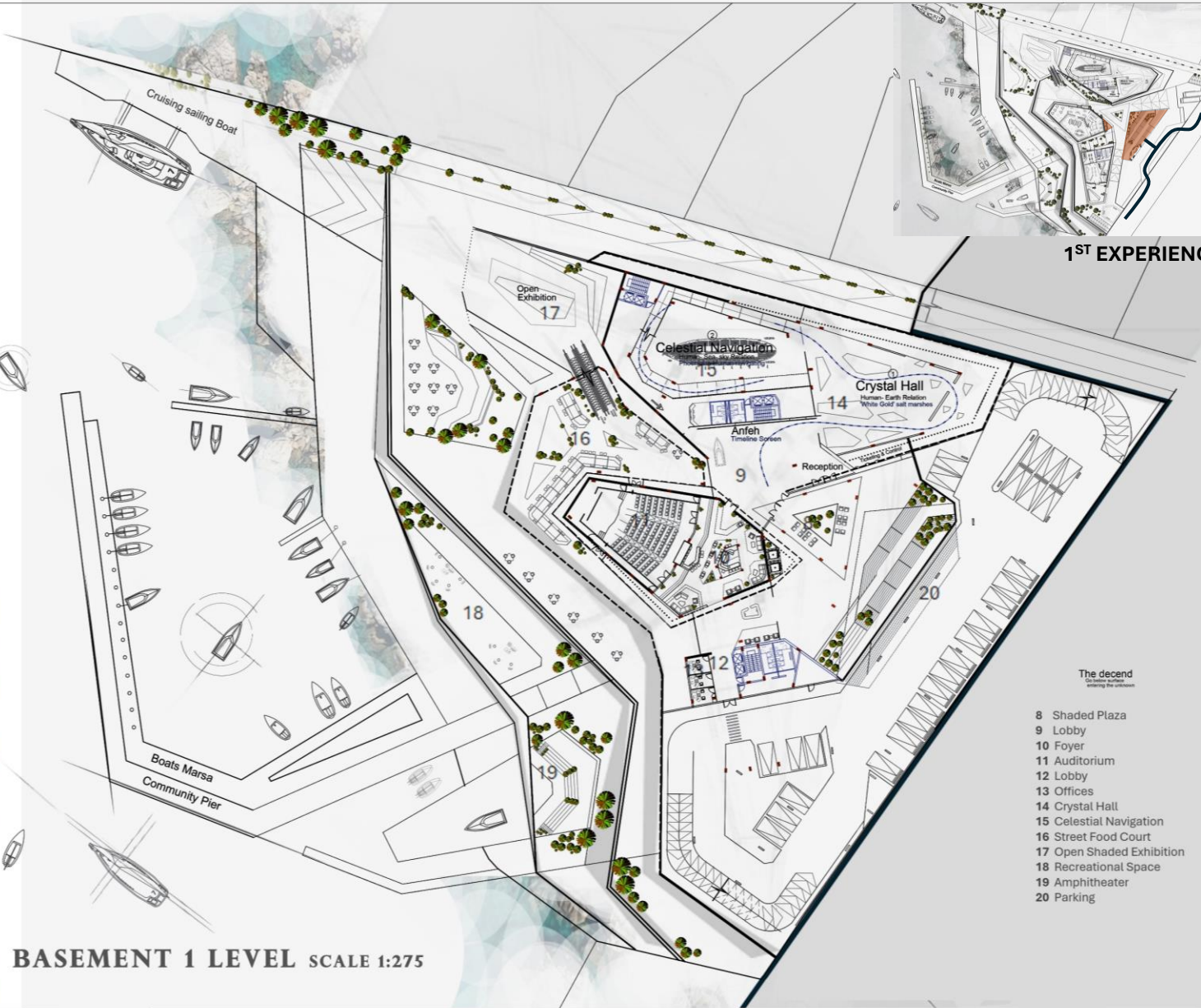


SITE OVERVIEW

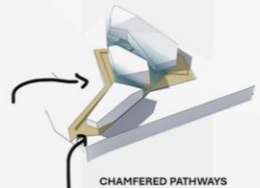


FORM GENERATION



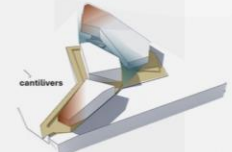


1ST EXPERIENCE



CHAMFERED PATHWAYS

Exterior pathways are gently chamfered slightly and strategically framed to deflect wind, capture views, and choreograph a gradual, perceptible journey that feels both protected and navigational.



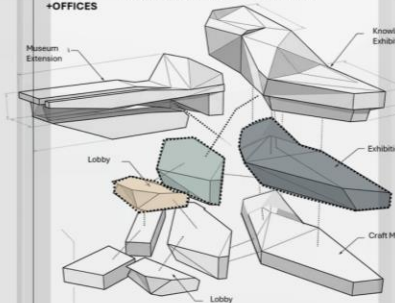
cantilevers

WIND DEFLECTION

A carefully shaped cantilever can function as a wind wing, or wind-breaker, redirecting coastal winds upward, reducing facade pressure, and creating a sheltered "harbor" space beneath.

COMMERCIAL COMMUNITY TOURISTIC

LOBBY + OFFICES MULTIPURPOSE HALL EXHIBITION

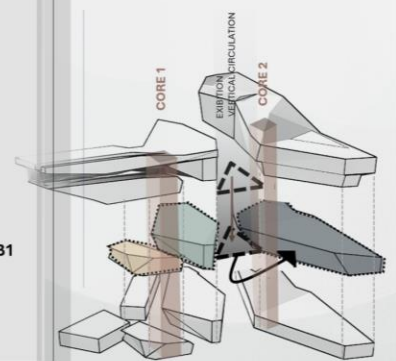


VERTICAL CIRCULATION IN B1 FLOOR

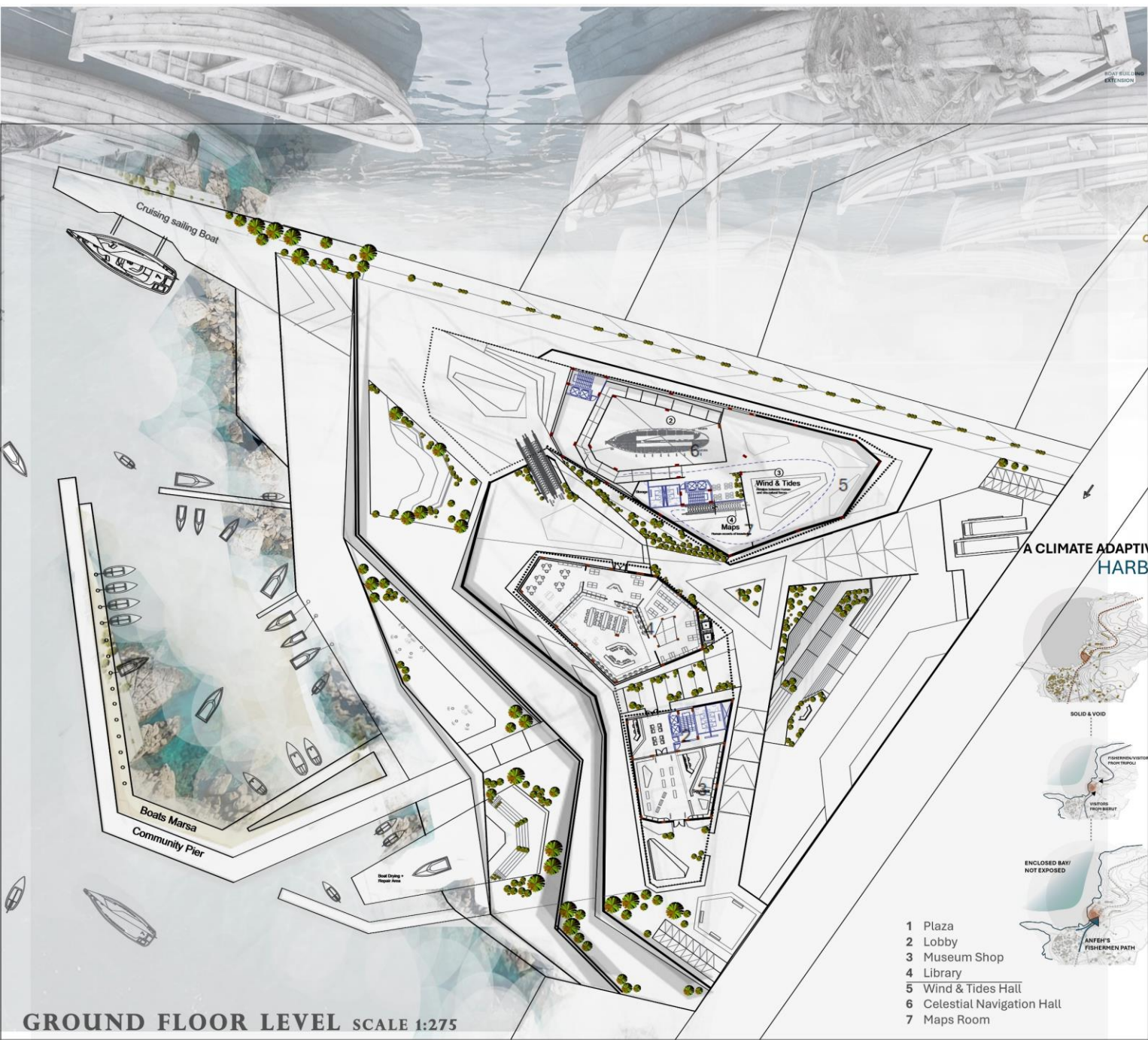
The decend
Shelving for circulation

- 8 Shaded Plaza
- 9 Lobby
- 10 Foyer
- 11 Auditorium
- 12 Lobby
- 13 Offices
- 14 Crystal Hall
- 15 Celestial Navigation
- 16 Street Food Court
- 17 Open Shaded Exhibition
- 18 Recreational Space
- 19 Amphitheater
- 20 Parking

B1



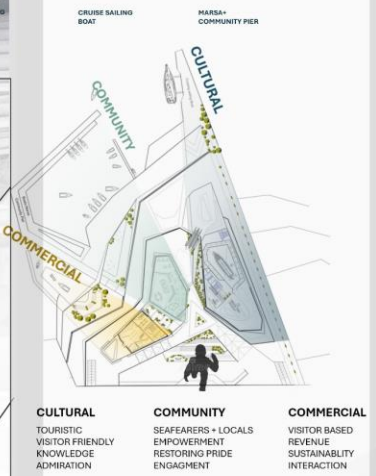
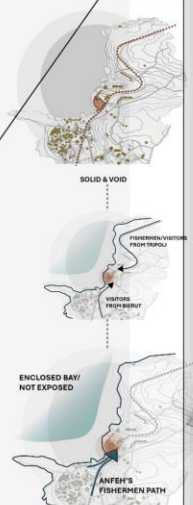
BASEMENT 1 LEVEL SCALE 1:275



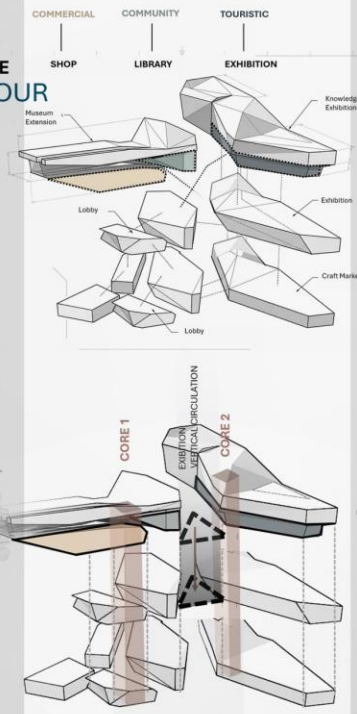
GROUND FLOOR LEVEL SCALE 1:275

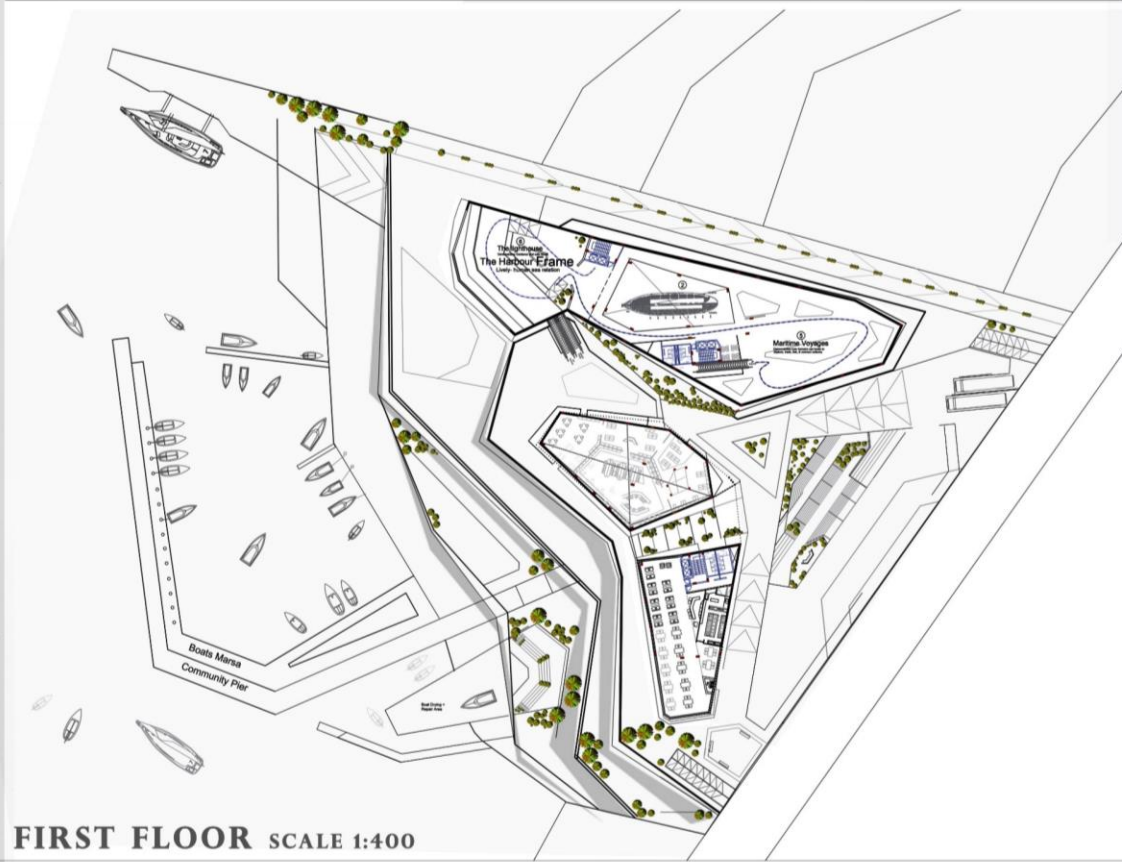
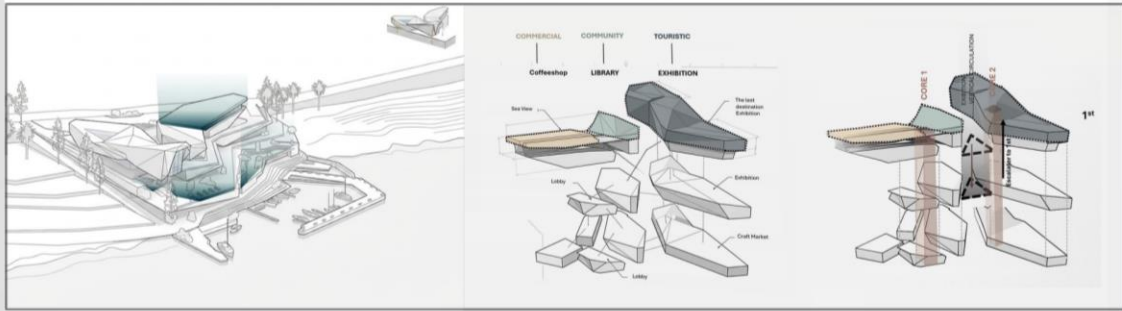
- 1 Plaza
- 2 Lobby
- 3 Museum Shop
- 4 Library
- 5 Wind & Tides Hall
- 6 Celestial Navigation Hall
- 7 Maps Room

A CLIMATE ADAPTIVE HARBOUR

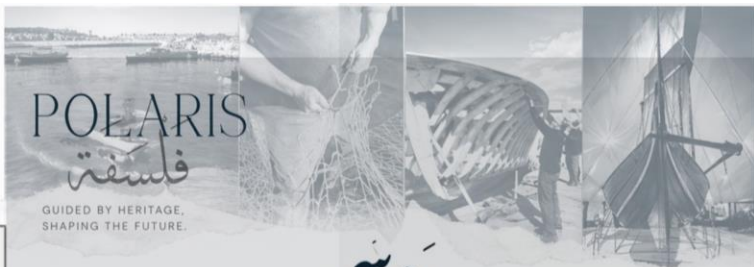


- | | | |
|-----------------------------------------------------------------------------|---------------------------------------------------------------------------------------|--------------------------------------------------------------------------------|
| CULTURAL
TOURISTIC
VISITOR FRIENDLY
KNOWLEDGE
ADMIRATION | COMMUNITY
SEAFARERS + LOCALS
EMPLOYMENT
RESTORING PRIDE
ENGAGEMENT | COMMERCIAL
VISITOR BASED
REVENUE
SUSTAINABILITY
INTERACTION |
|-----------------------------------------------------------------------------|---------------------------------------------------------------------------------------|--------------------------------------------------------------------------------|





FIRST FLOOR SCALE 1:400



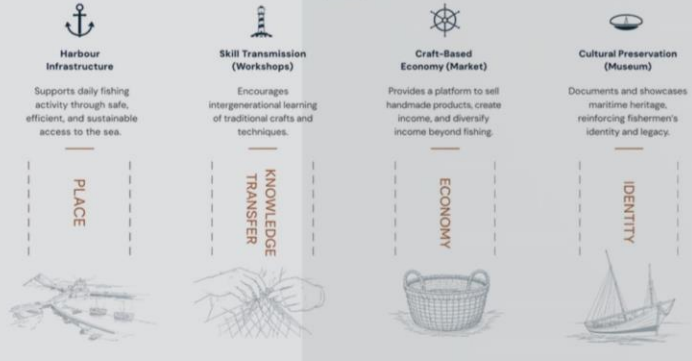
POLARIS

فلسفة

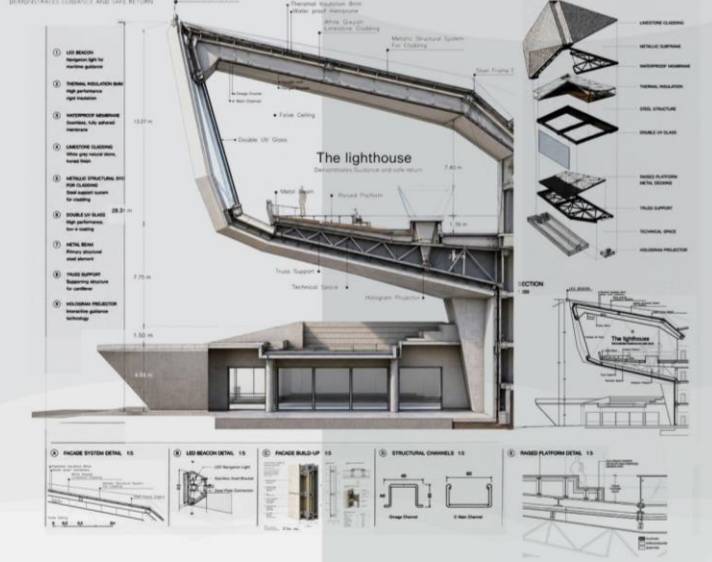
GUIDED BY HERITAGE, SHAPING THE FUTURE.

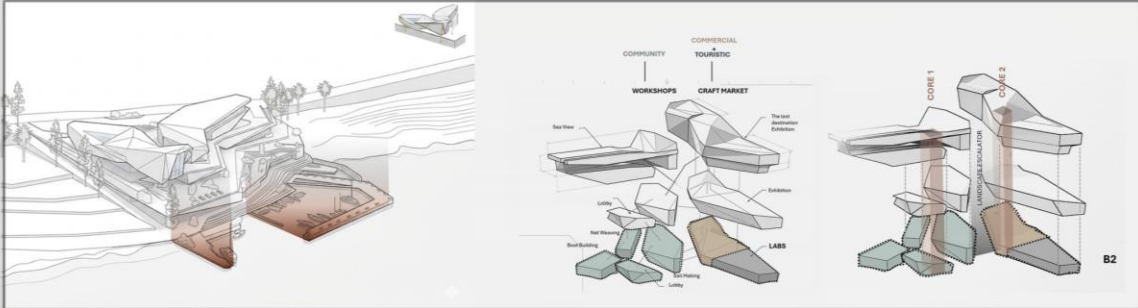
مترسی

FISHERMEN CULTURE EMPOWERMENT



THE LIGHTHOUSE





BASEMENT 2 LEVEL SCALE 1:400

ARCHITECTURAL EXPERIENCE: SPATIAL STRATEGY

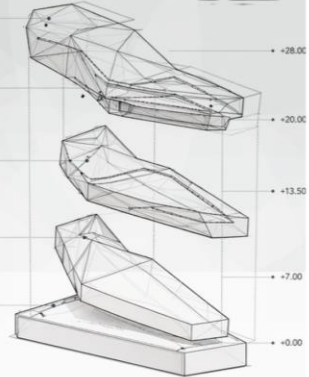
مَنْ
جَهَلُ
الْبَحْرِ
تَأْتَهُ، وَمَنْ
خَيْرٌ
وَجَدَ مَرَسًا

From effort comes discovery, and from experience, a meaningful future.

CONCEPT
A journey of exploration and connection between humans, sea, land, and the elements. The sequence of spaces is orchestrated to foster curiosity, understanding, and belonging.

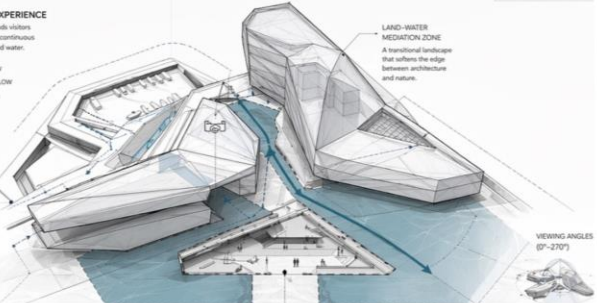
JOURNEY 0

- 5 **MARITIME VOYAGES**
A celebration of human innovation in seafaring, trade, and exploration.
- 4 **CRYSTAL HALL**
A space of reflection and connection with the earth. White gold salt marshes and mineral formations.
- 3 **MAPS ARCHIVE**
Exploring the relationship between humans, the sea, and natural forces through ancient maps and records.
- 2 **CELESTIAL NAVIGATION**
Understanding orientation and movement according to the sun, moon, and stars.
- 1 **JOURNEY START**
The beginning of human interaction with water.



1 MAIN NAVIGATION EXPERIENCE
A guided spatial flow that leads visitors back to the sea, embodying a continuous connection between land and water.

- PRIMARY NAVIGATION FLOW
- SECONDARY NAVIGATION FLOW
- VIEWING ANGLES (9°-27°)
- LINE OF SIGHT
- WATER RELATIONSHIP
- COASTAL INTERFACE
Open views to the sea create a constant visual and physical connection.
- VISTA CONTROL
Strategic openings and screening frame views and guide movement.
- TOPOGRAPHY RESPONSE
The form emerges from the land, minimizing impact and maximizing integration.



2 PENINSULA VISUAL EXPERIENCE
A promenade of movement and pause, sustaining visibility and serving with uplifting views of the surrounding landscape.

- ARRIVAL
Approach from the land reveals the form gradually.
- PROMENADE
The path unfolds along the water's edge.
- PAUSE
Spaces for contemplation and framed views.
- REVEAL
The museum emerges as a landmark.

3 MUSEUM EXPERIENCE
Curated exhibitions and interactive environments that deepen understanding of maritime heritage and natural forces.

- EXHIBITION GALLERIES
Flexible spaces for artifacts and narratives.
- INTERACTIVE ZONES
Engagement through discovery and play.
- LIGHT & MATERIALITY
Natural light, reflection, and texture guide mood.
- OUTDOOR TERRACES
Extending the experience to the landscape.

EXPERIENCE LEGEND

- SOLID / BUILD ZONES
- LIQUID / WATER ZONES
- TRANSITION ZONES
- LANDSCAPE / GREEN
- PRIMARY NAVIGATION FLOW
- SECONDARY NAVIGATION FLOW
- VIEWING ANGLES (9°-27°)
- LINE OF SIGHT

MATERIAL PALETTE

- WHITE CONCRETE
- GLASS
- NATURAL STONE
- WATER

DIAGRAM KEY

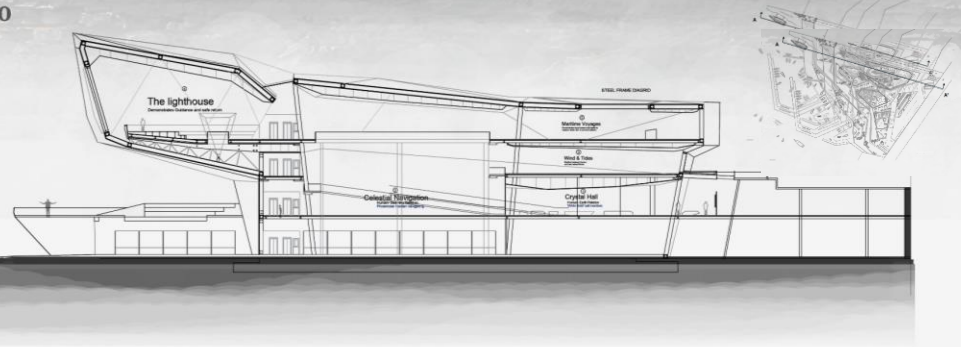
- LEVELS
- CONNECTION / LINK
- VERTICAL CIRCULATION
- ENTRY POINTS

SUSTAINABILITY STRATEGIES

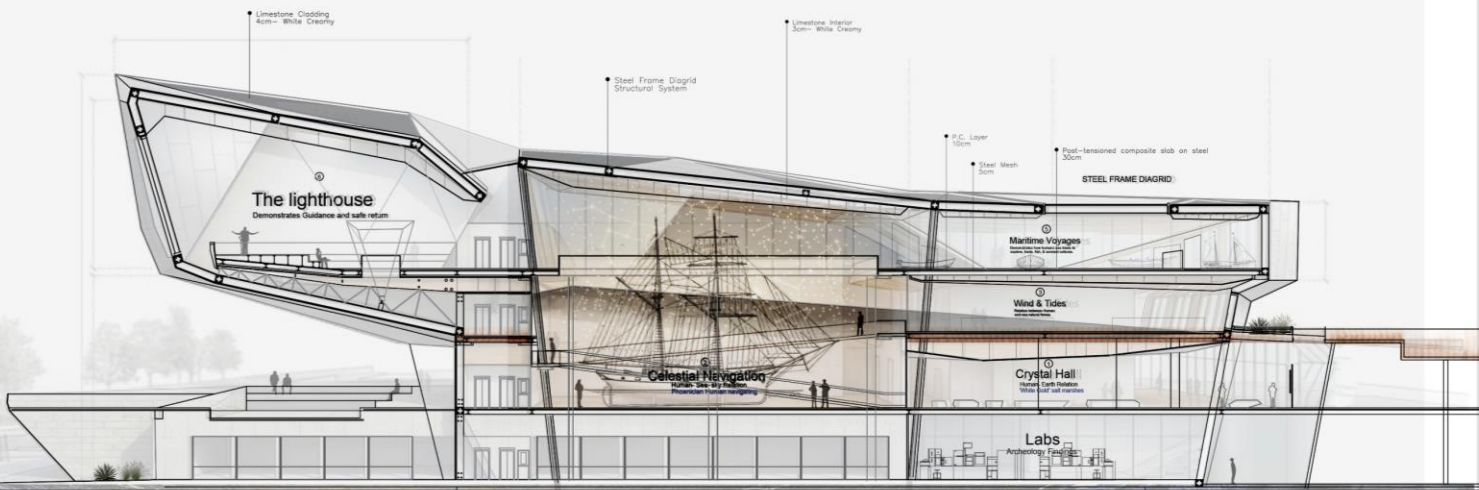
- NATURAL VENTILATION
- DAYLIGHT OPTIMIZATION
- WATER COLLECTION
- LOW IMPACT MATERIALS



FRONT ELEVATION SCALE 1:150

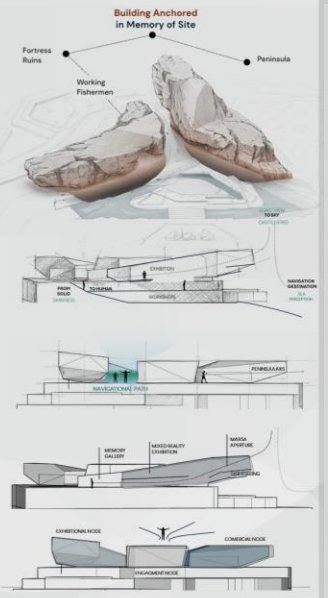


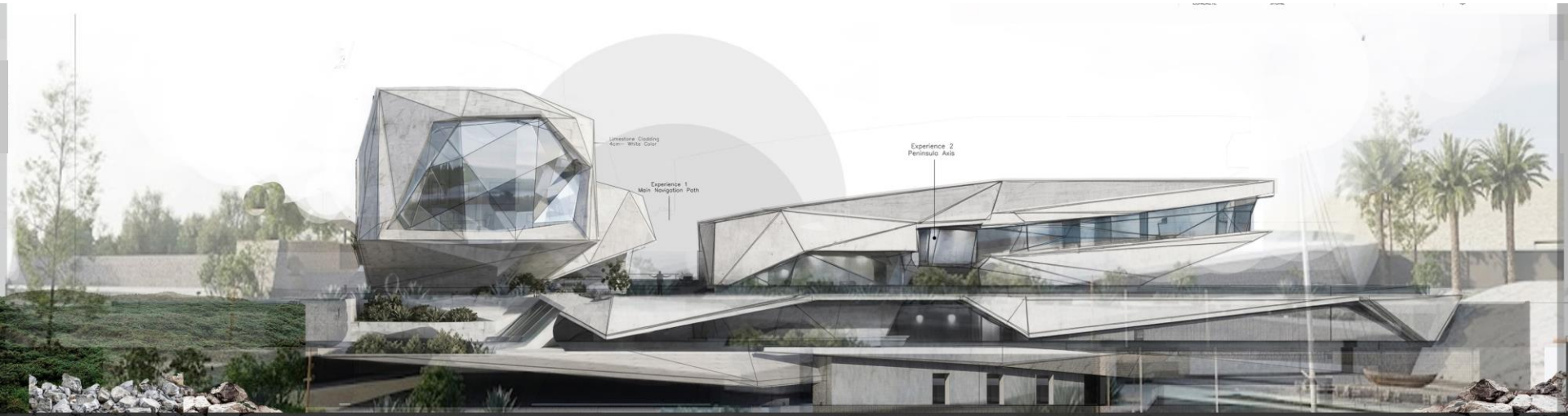
SECTION AA' SCALE 1:275



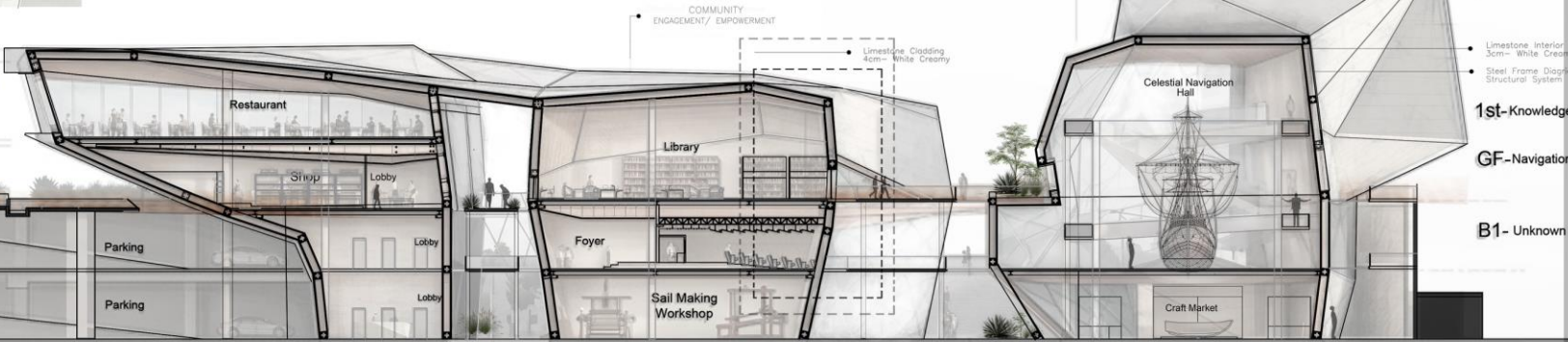
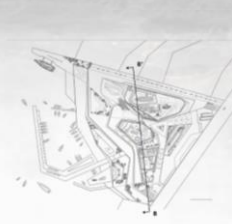
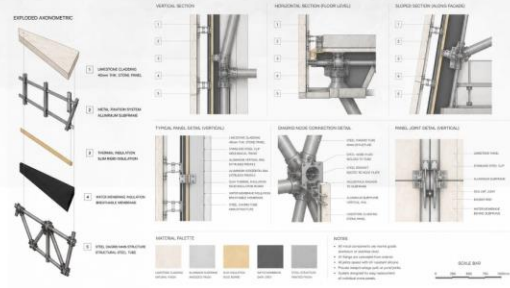
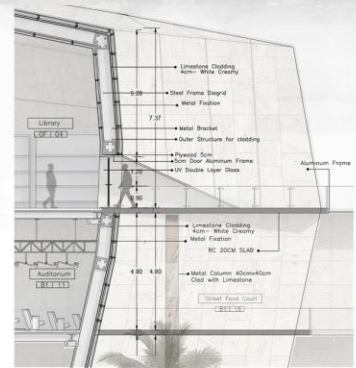
SECTION AA' SCALE 1:150

CONCEPTUAL SKETCHES

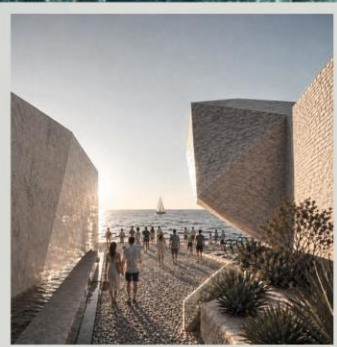
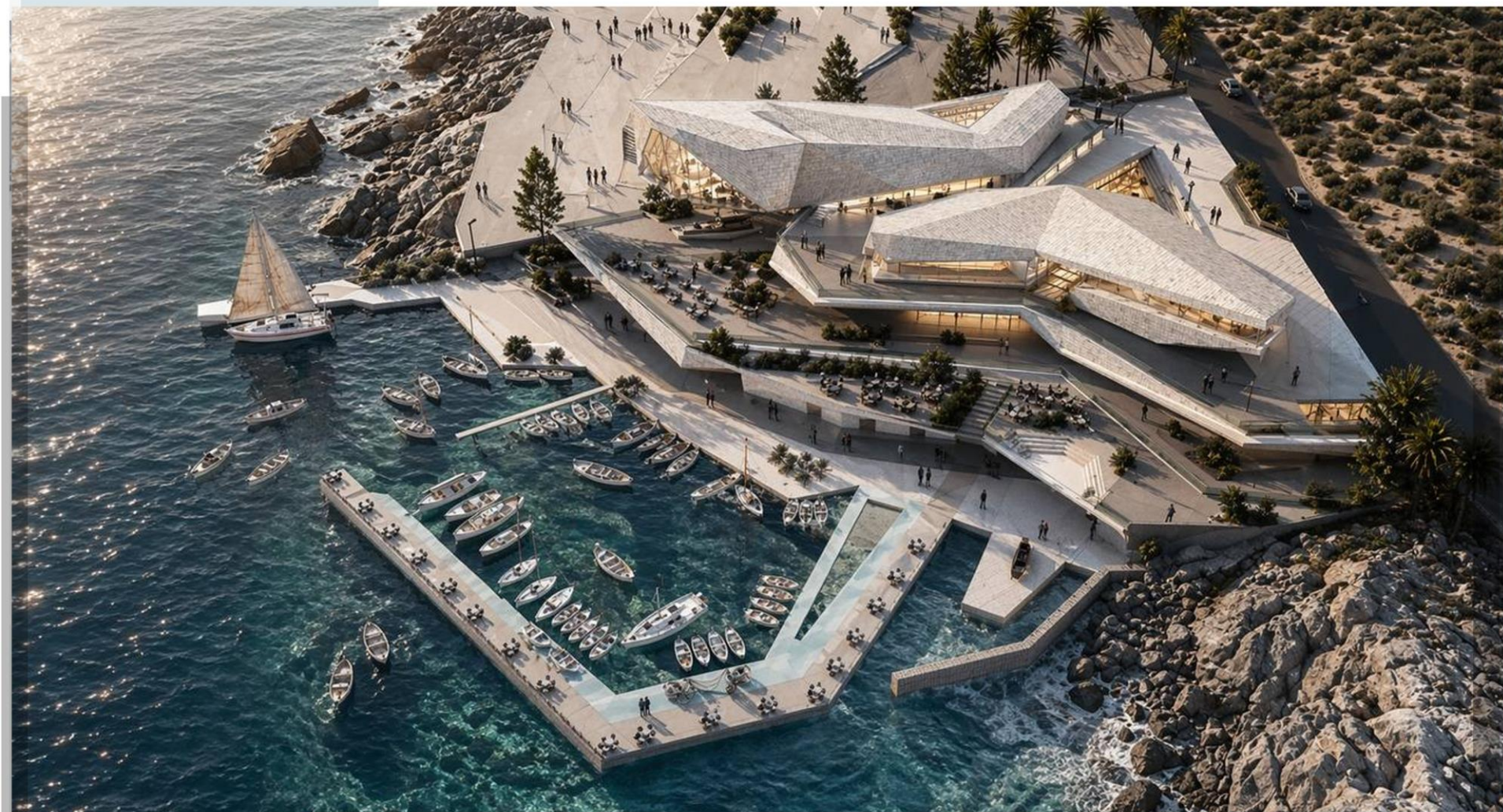




BACK ELEVATION SCALE 1:150



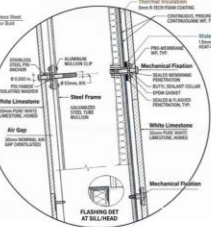
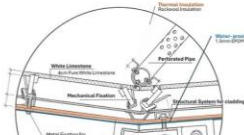
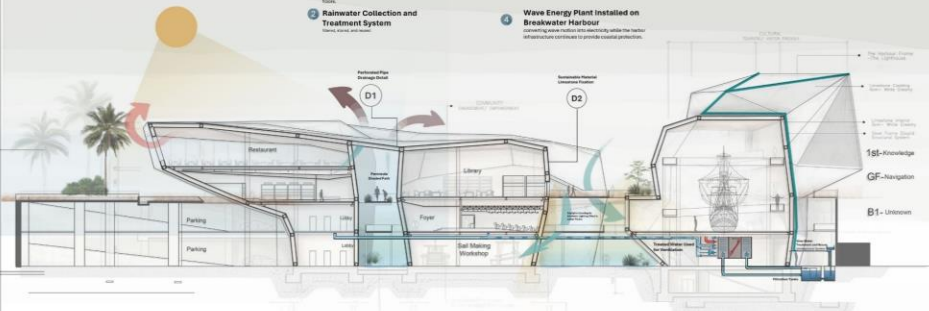
SECTION BB' SCALE 1:150



UPPER TERRACE VIEW

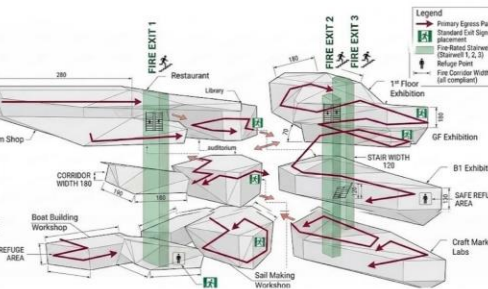
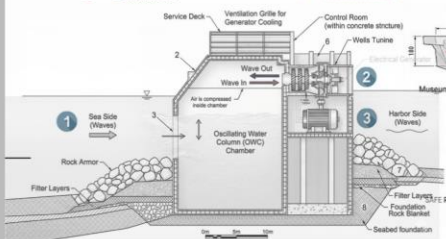
ENVIRONMENTAL STUDY

- 1 **Skylights**
are integrated into the roofs of platform areas around the building to allow natural light to filter through the space.
- 2 **Rainwater Collection and Treatment System**
will collect rainwater from the roof and filter it through a series of filters to provide a natural production.
- 3 **Sustainable Material Limestone**
will be used in the walls of platform areas around the building to provide a natural production.
- 4 **Wave Energy Plant Installed on Breakwater Harbour**
will generate power from the waves and provide a natural production.



4 WAVE ENERGY PLANT INSTALLED ON WAVE BREAKER

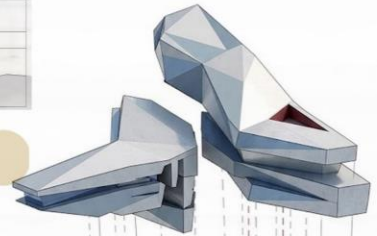
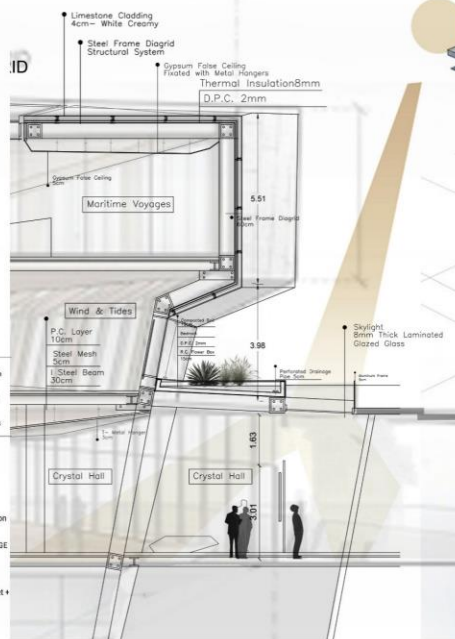
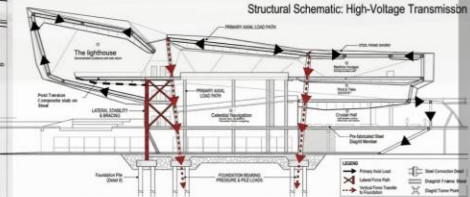
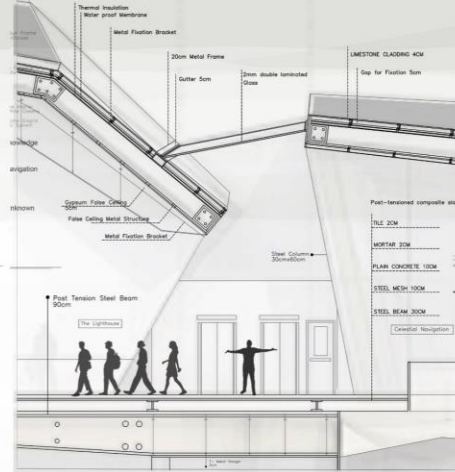
- 1 Lower level (in breakwater)
- 2 WAVE
- 3 TURBINE
- 4 GENERATOR
- 5 Upper Level (in building)
- 6 GENERATOR
- 7 ELECTRICAL ROOM
- 8 TRANSFORMER



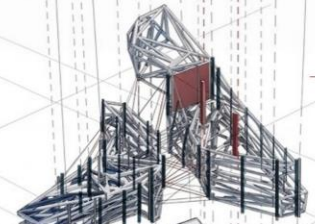
STRUCTURAL STUDY

STEEL FRAME DIAGRID STRUCTURE

A **steel frame diagrid** is a structural system in which the building's skeleton itself is formed by a network of diagonal steel members arranged in triangular patterns, eliminating the need for traditional vertical columns and horizontal beams while providing strength, stability, and efficient load distribution.



ENVELOPE
SHADING
SKIN
SKYLIGHT
GLASS
LIMESTONE



STRUCTURE
SHAPE
SUPPORT
STRUCTURE
FORMATION



FLOORS
CIRCULATION
FLOW
FUNCTION



Crystal Hall

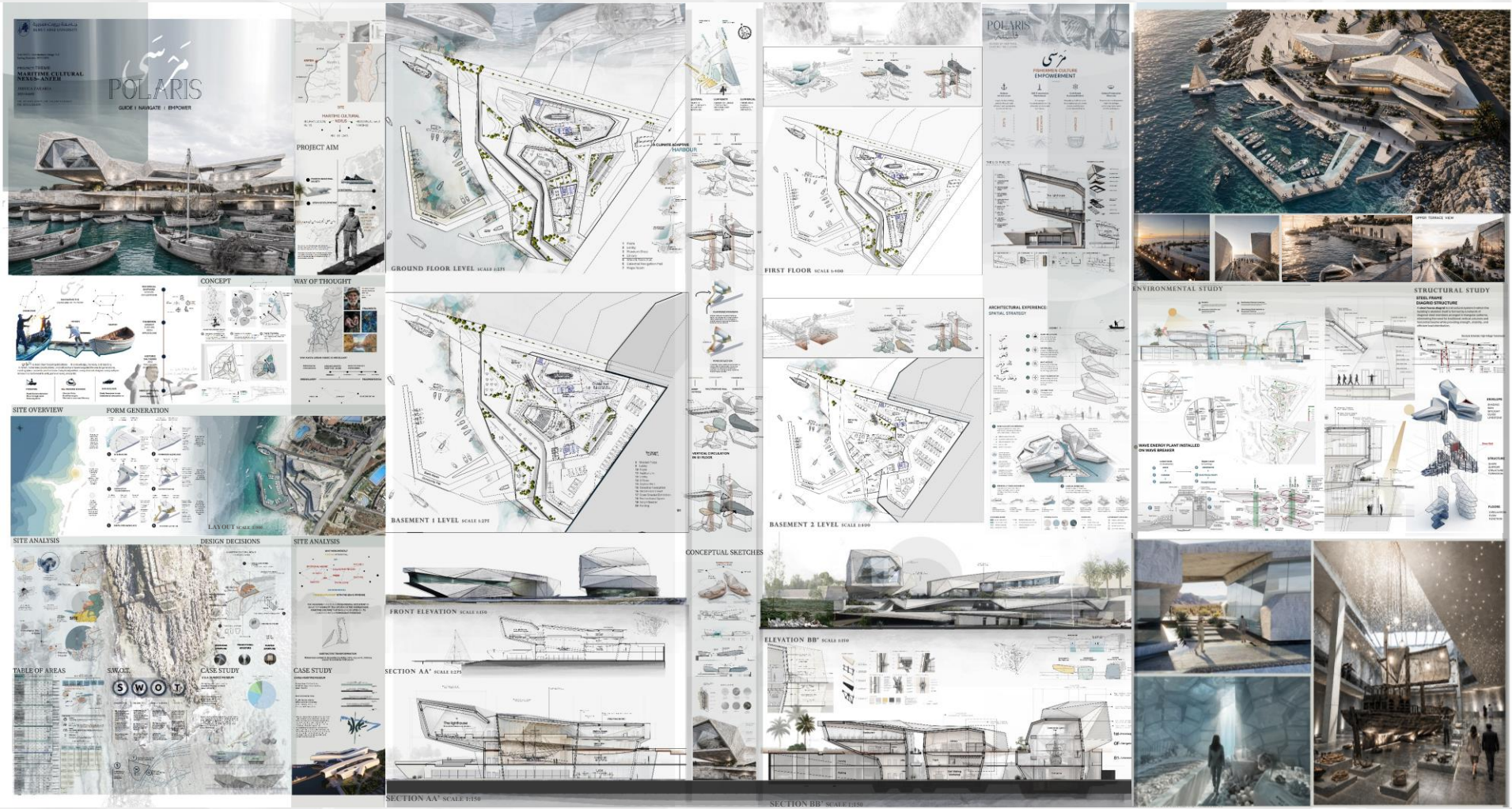


Celestial Navigation Hall



Scan me!

A Beacon in the Heart of the Mediterranean





Physical Model