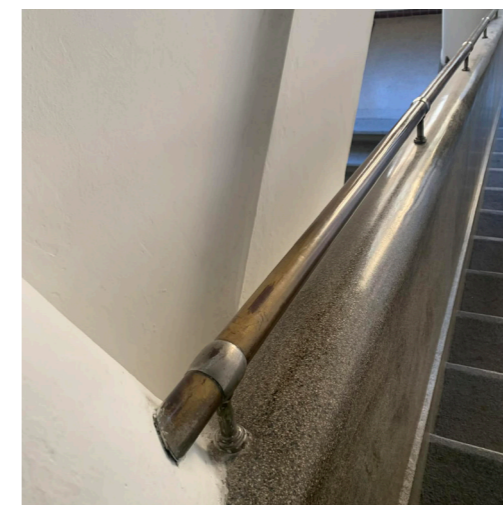
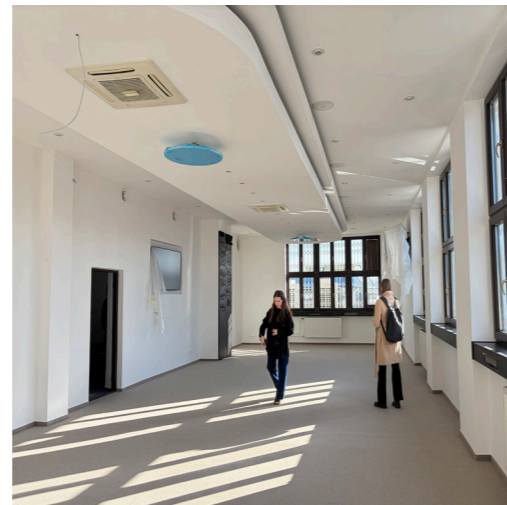


**Rectorate of  
Slovak Univerisity of Technology**





28  
škola umeleckých  
remesiel bratislava  
39



ŠUR\_school of arts and crafts



functionalism



chrome niches



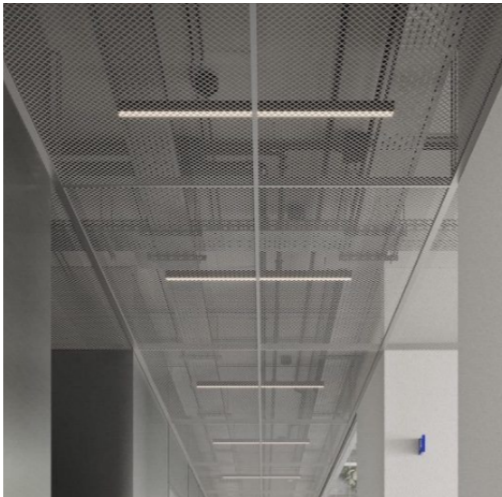
skylights



poured terrazzo



spotlights



metal mesh ceiling



suspended linear lighting



flexible furniture



stainless steel cladding



track lighting



glass partitions



functionalism inspired furniture



spherical suspended lights



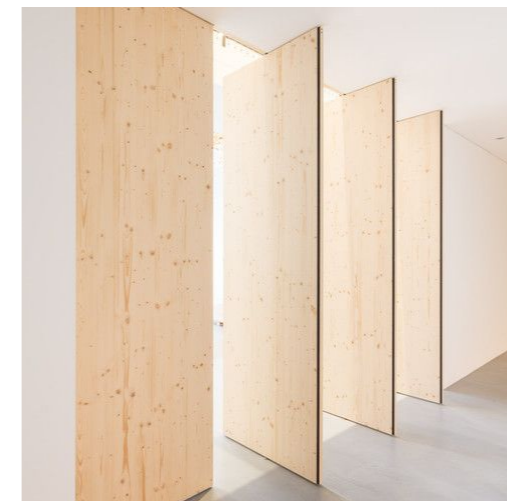
functionalism inspired furniture



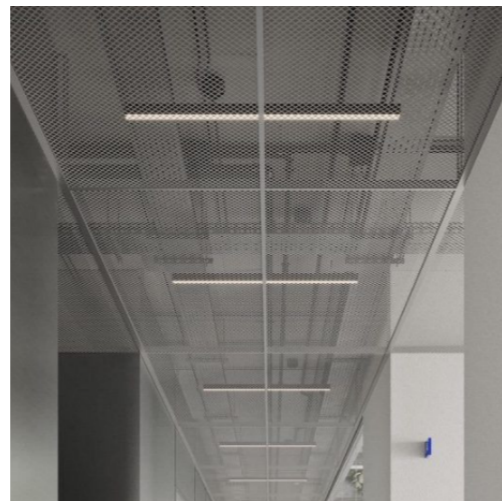
chrome-plated materials



spherical freestanding lights



sliding wooden walls



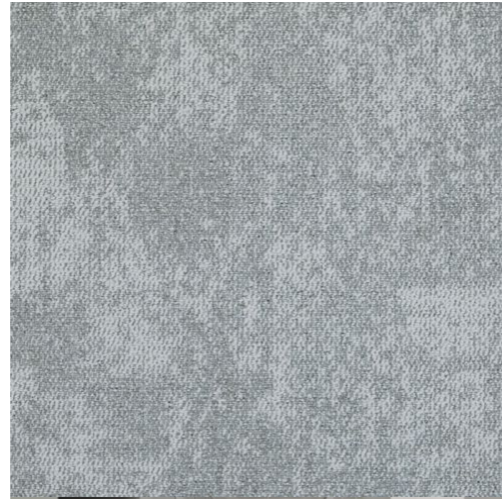
wayfinding system



oak wood



STU color palette



heavy-duty carpet



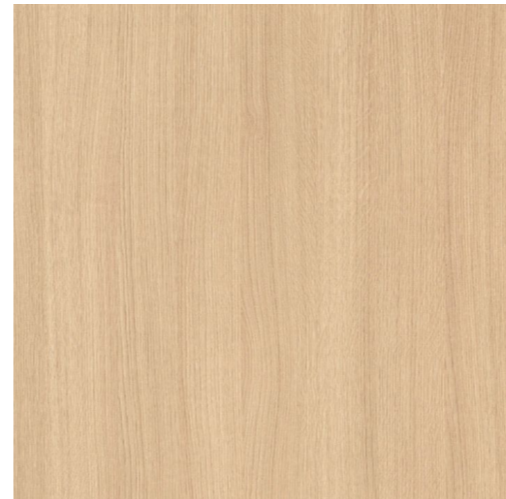
indoor plants



comfortable hallway seating



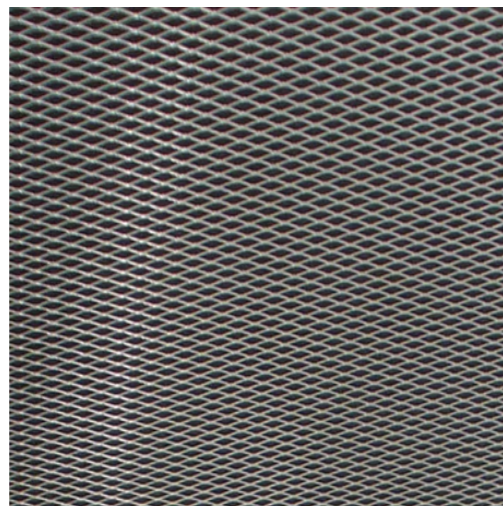
stainless steel



oak wood



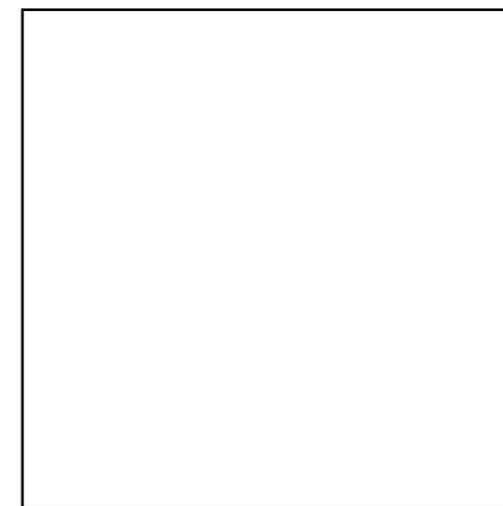
RGB 8f5c54



metal mesh



poured terrazzo



RGB FFFAFA



Attah conference table, Lammhults meeting rooms



flexible table, Fourfold conseling center, multifunctional room



spotlights, Globo exhibition spaces



Haven bench, Allermuir exhibition and circulation spaces



static low stool, Allermuir exhibition and circulation spaces



90° two-Way Corner Unit bench, Allermuir exhibition and circulation spaces



Sunny easy chair, Lammhults  
- social and lounge areas



Campus air chair, Lammhults - social  
spaces



Campus air bar stool, Lammhults - café



Nelson Ball pendant lamp, Herman Miller  
offices

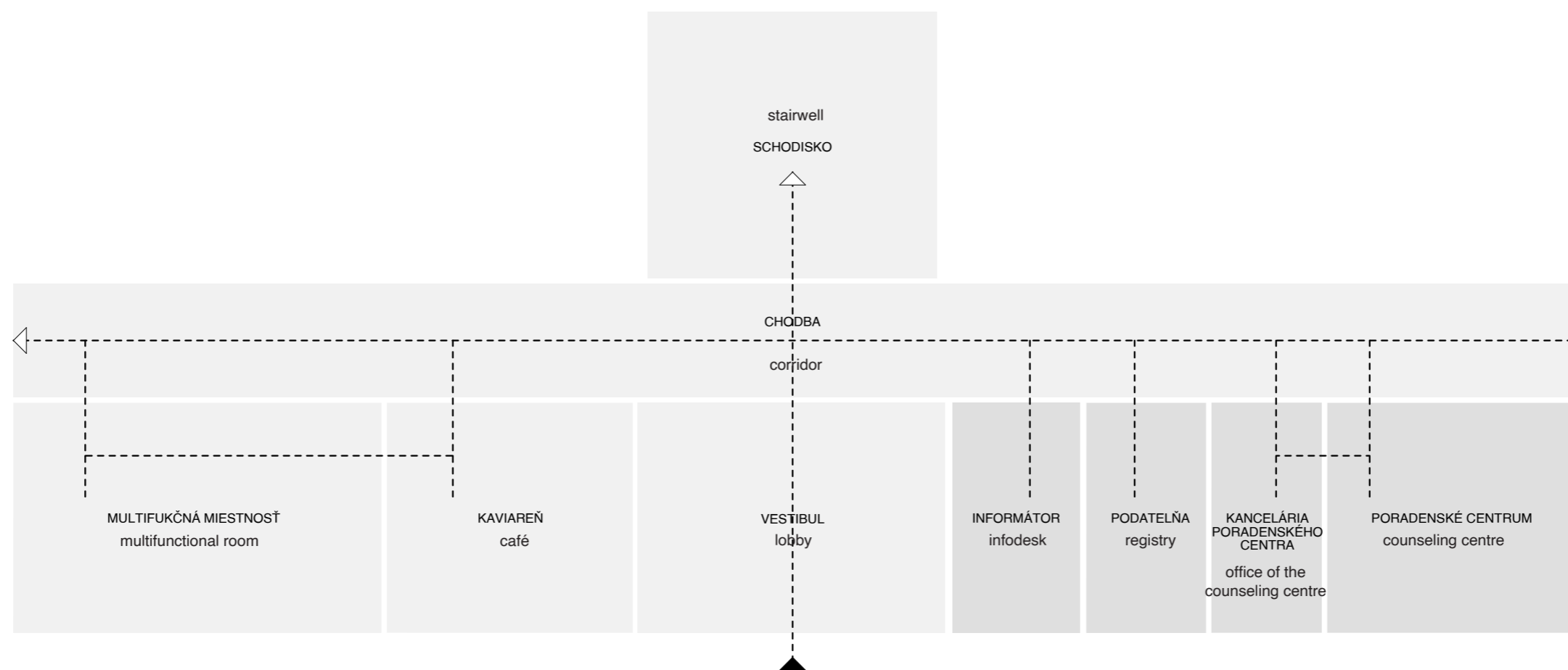


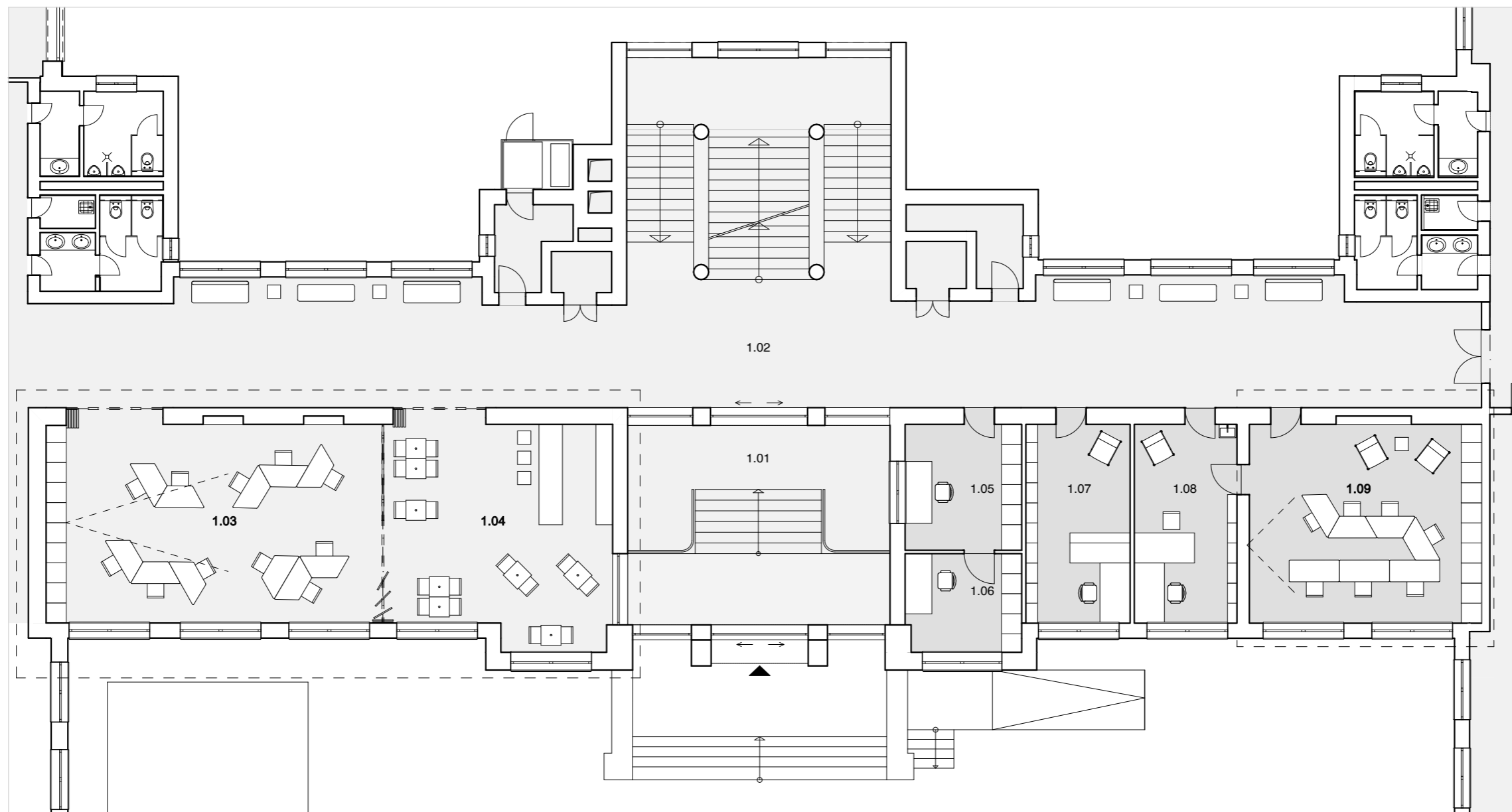
Eames Soft Pad Executive Chair,  
Herman Miller  
offices and meeting rooms



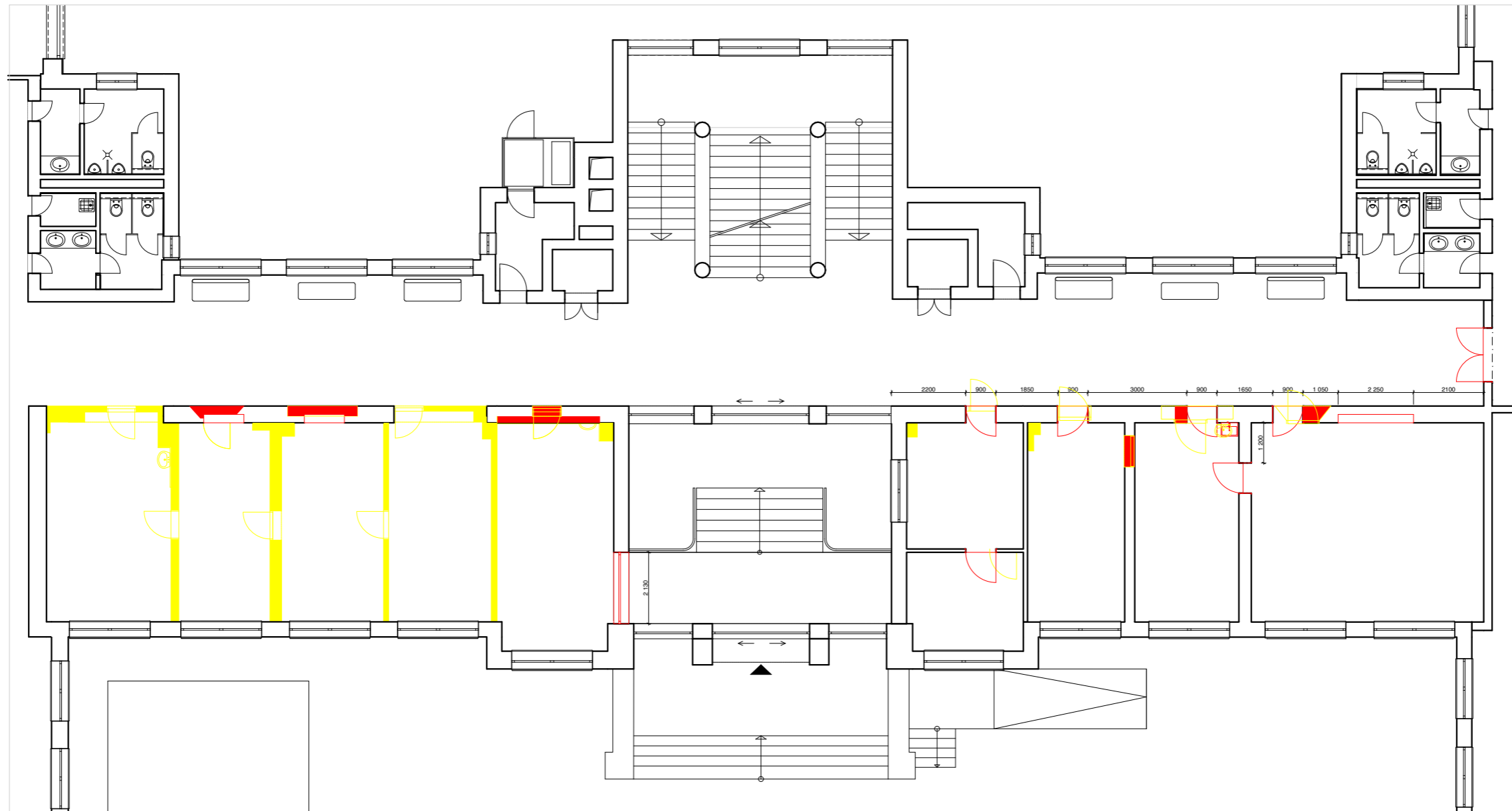
Simrishamn floor lamp  
offices, meeting rooms

The interior design for the Rectorate of the Slovak University of Technology (STU) in Bratislava responds to the need to transform the university leadership's outdated headquarters. The primary priority of the new design is to create a prestigious, functional, and ergonomic environment that is welcoming not only to employees but also to students and external visitors. The overall concept builds upon the building's original and existing values while reflecting the technical character of the university and the institution's core function. This technical identity is translated into the material palette through features such as stainless steel and expanded metal ceilings. The legacy of functionalism is integrated into the interior furnishings, which feature simple, minimalist furniture. The status of the rectorate as the university's ultimate representative hub is further elevated by the choice of durable, high-quality materials. The interior also celebrates the building's original structural rhythm; the historic beams in the corridor are visually reinforced and rhythmically mirrored by the new ceiling grid beams. Finally, modern operational demands are met through a high degree of flexibility. Key zones, such as the "oasis" and the social lounge, are designed as multifunctional spaces with multiple usage modes, allowing them to adapt rapidly to various types of both formal and informal activities.

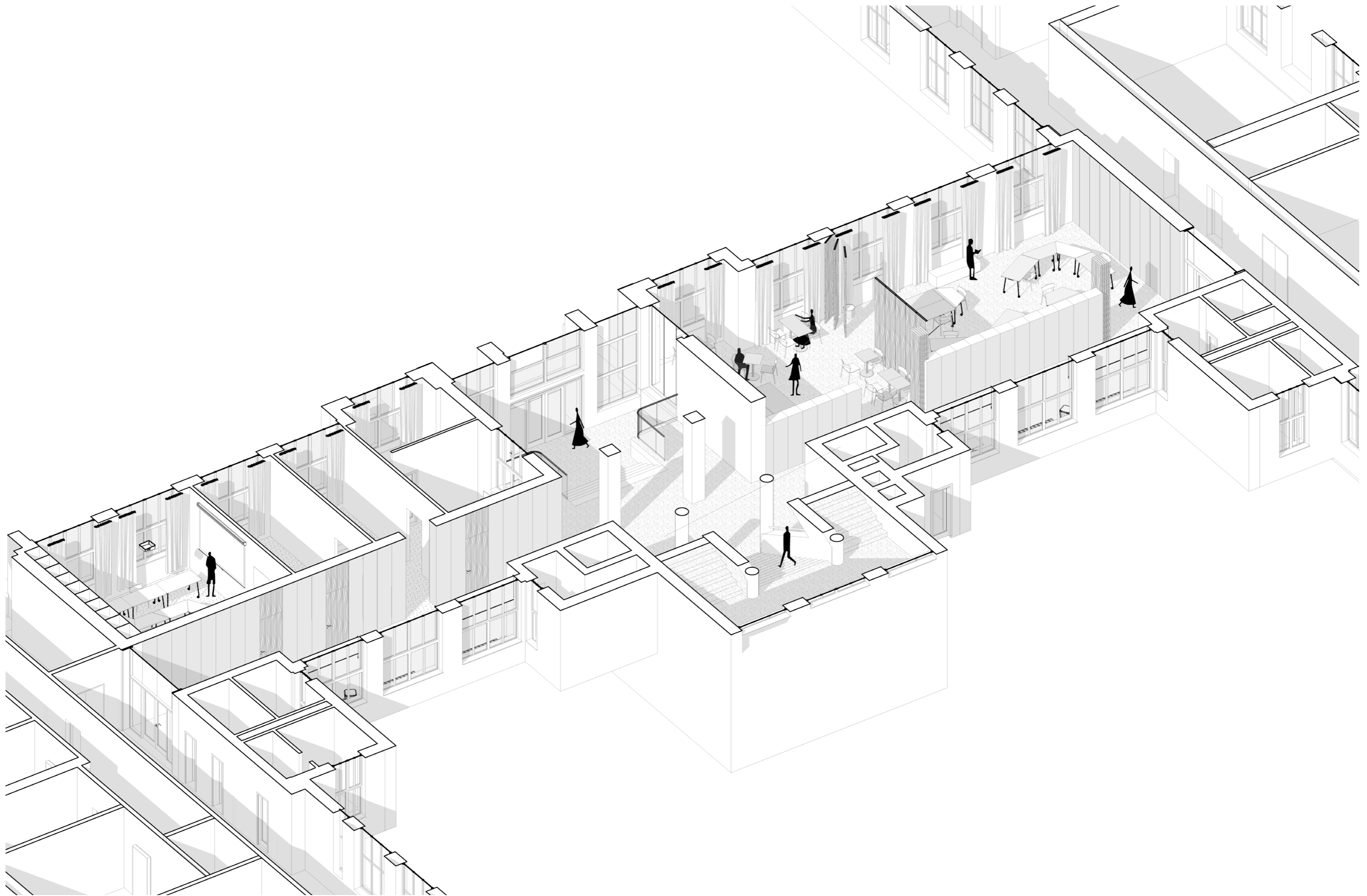


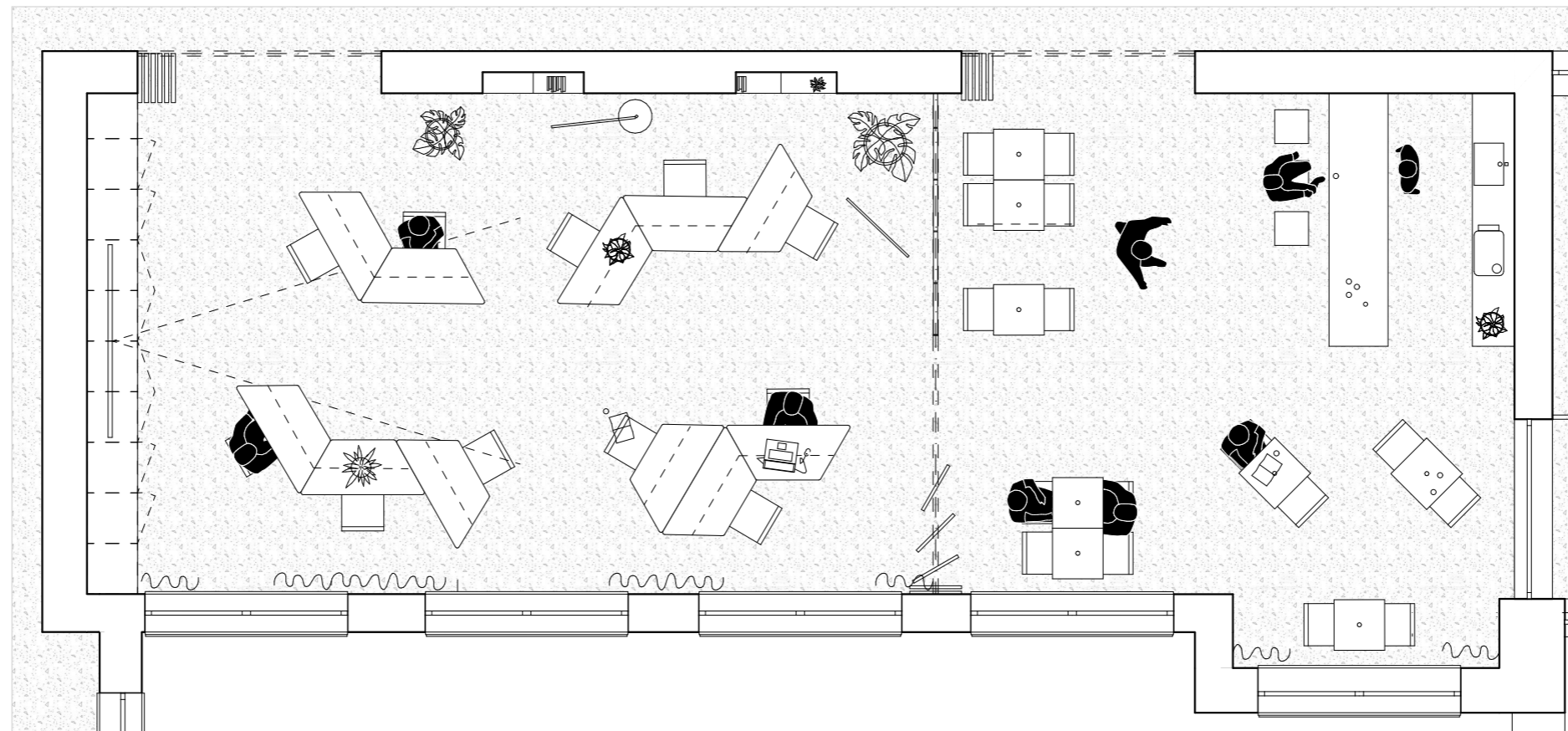


- 1.01 LOBBY
- 1.02 CORRIDOR
- 1.03 MULTIFUNCTIONAL SPACE**
- 1.04 CAFÉ**
- 1.05 INFODESK
- 1.06 RECEPTION OFFICE
- 1.07 REGISTRY
- 1.08 COUNSELING CENTER OFFICE
- 1.09 COUNSELING CENTER**

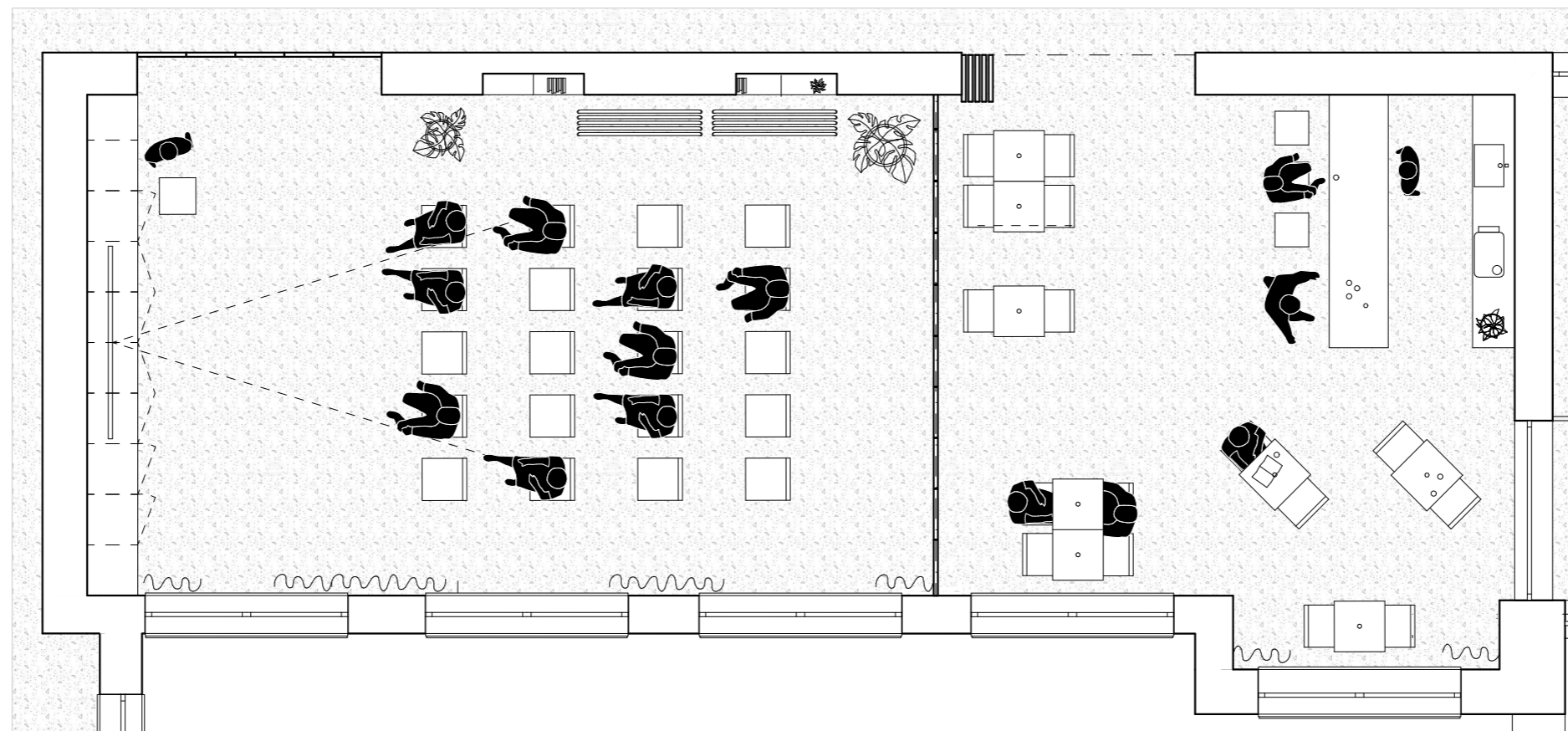


■ DEMOLISHED CONSTRUCTION  
■ NEW CONSTRUCTION

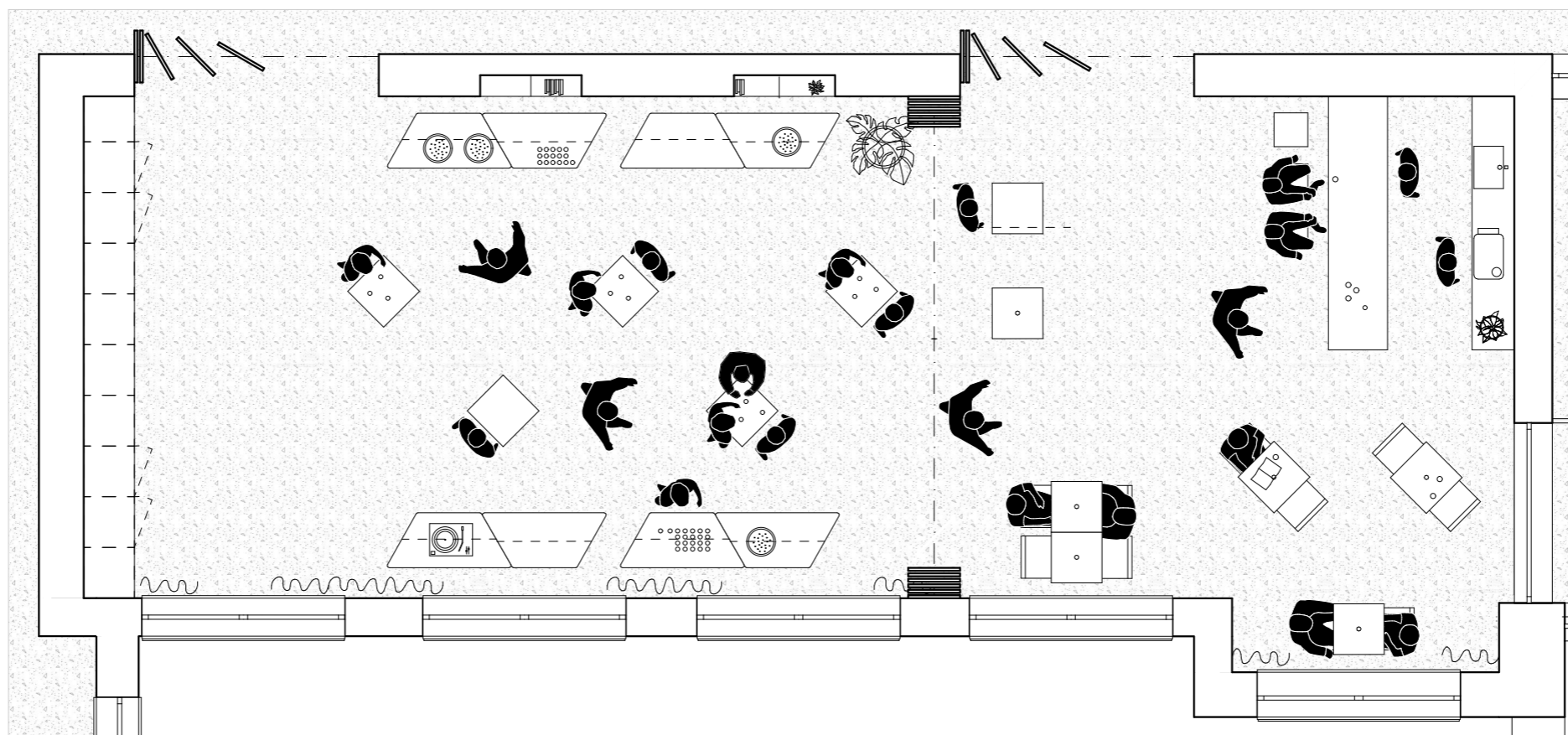




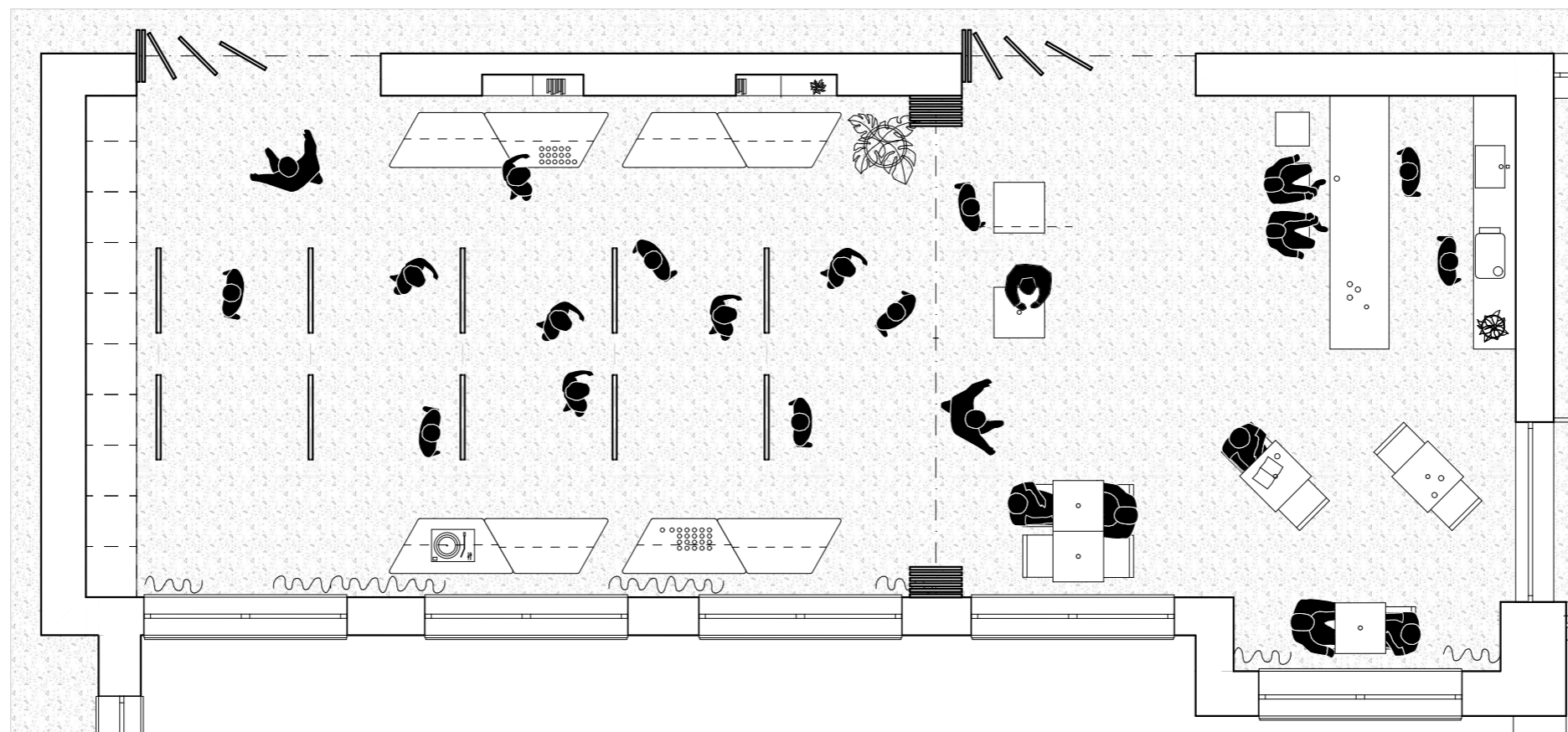
ALTERNATIVE 1 - Multifunctional room and café



ALTERNATIVE 2 - Lecture room and café



ALTERNATIVE 3 - Social lounge

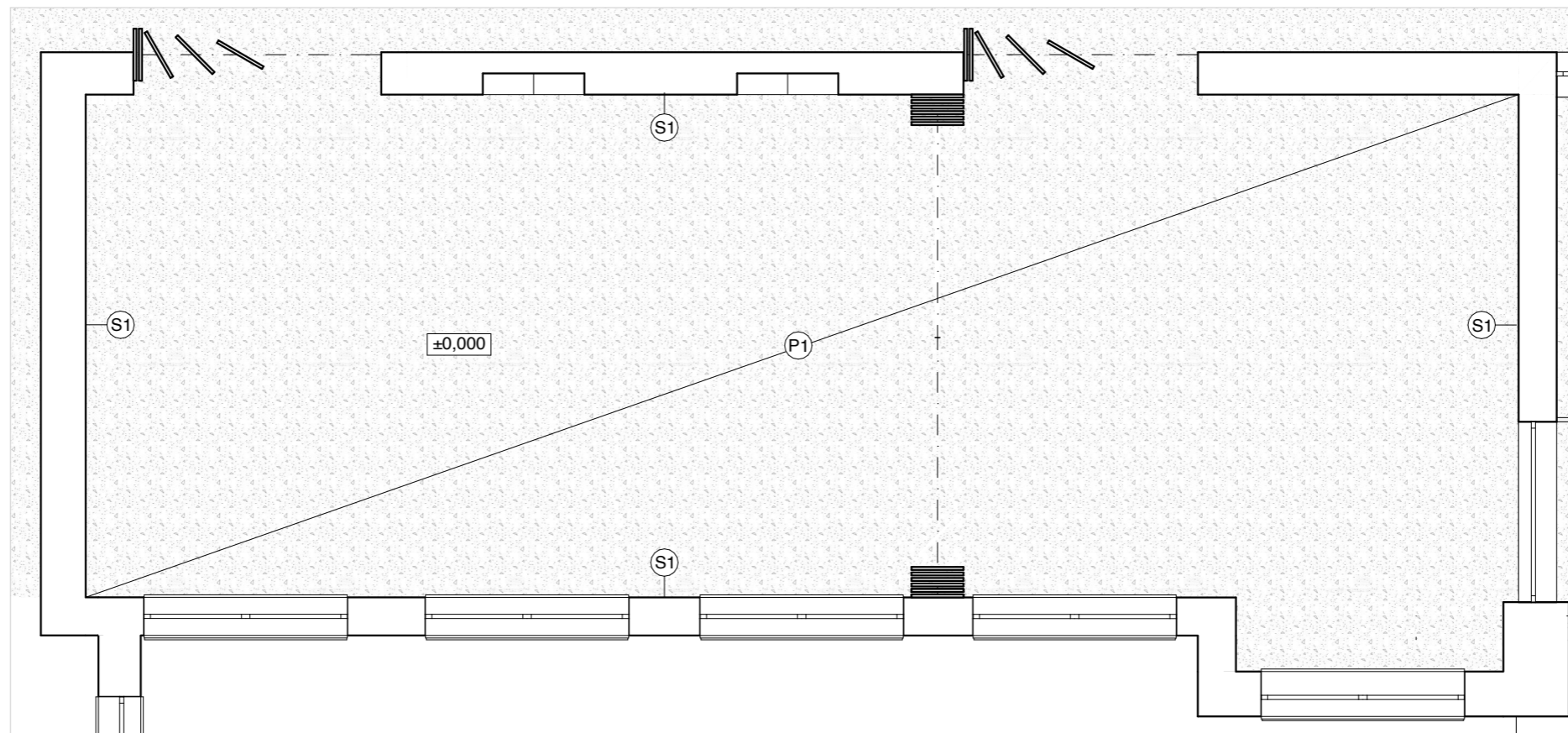


ALTERNATIVE 4 - Exhibition

(P1) Pôvodná podlaha - terazzo

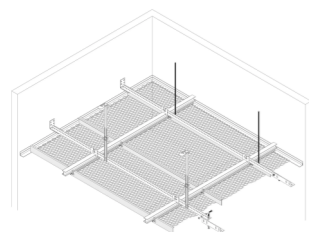


(S1) Terazzový monolitický sokel v. 80 mm h. 15 mm



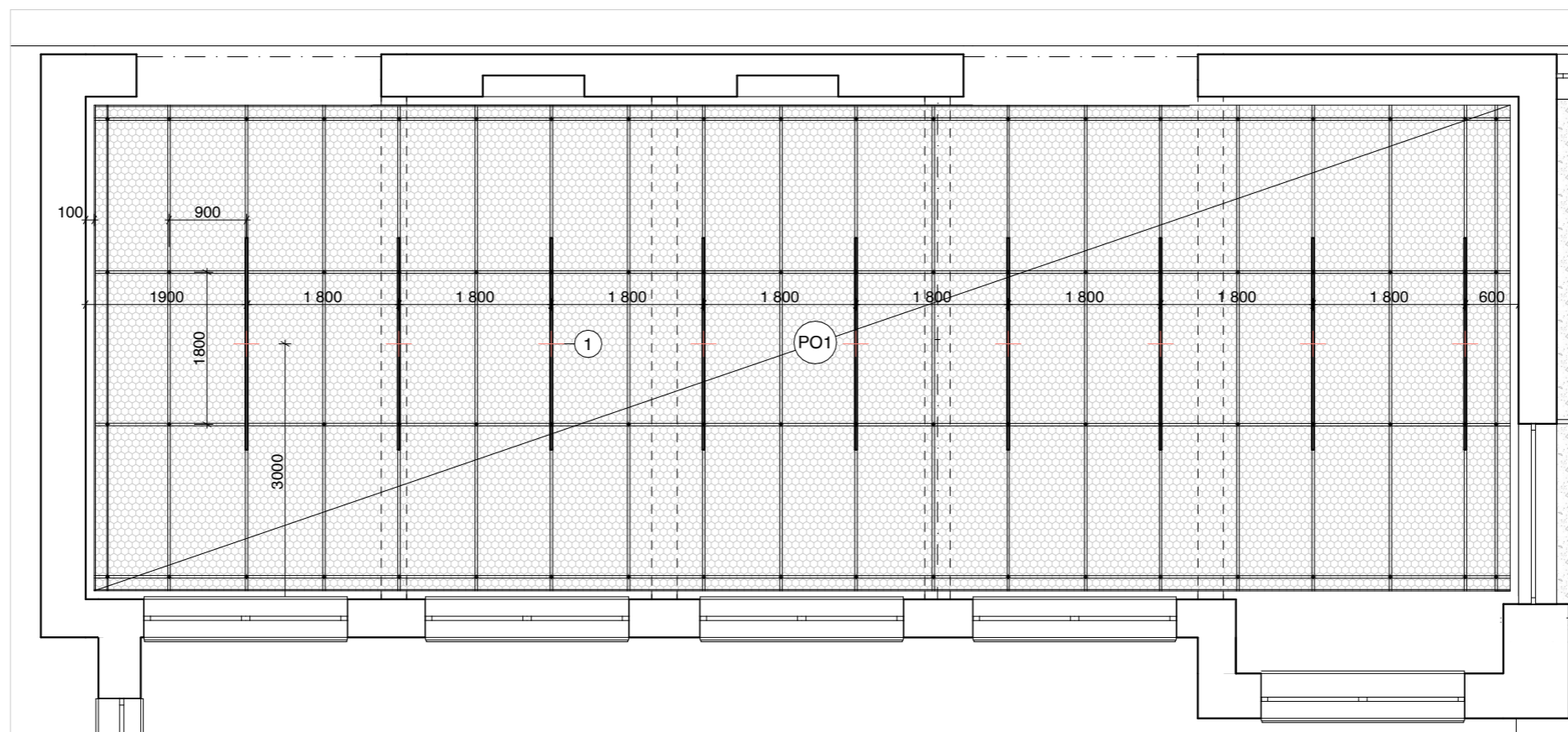
VÝKRES PODLÁH

(PO1) Systémový podhľad z ľahkovu Durlum S10 H RHOMBOS Double-hook system, zavesený ostrovne Rozmer panela 1500 x 900 mm Kosoštvorcový typ oka, veľkosť oka 25x16x2x1,5 mm MM RAL 906 Matná



(1) Interiérové závesné LED líniové svetidlo s kruhovím pro'lom, 2500 x 20 MM (na mieru)

(2) Projektor Epson CO-FH02, (V11HA85040) biely



VÝKRES PODHLADU A OSVETLENIA





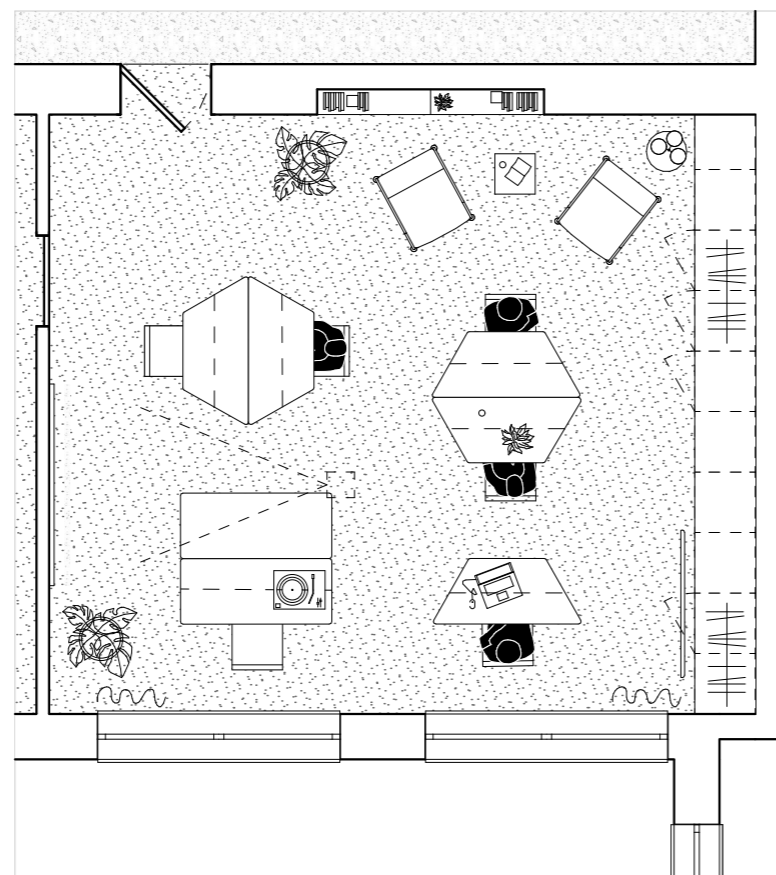




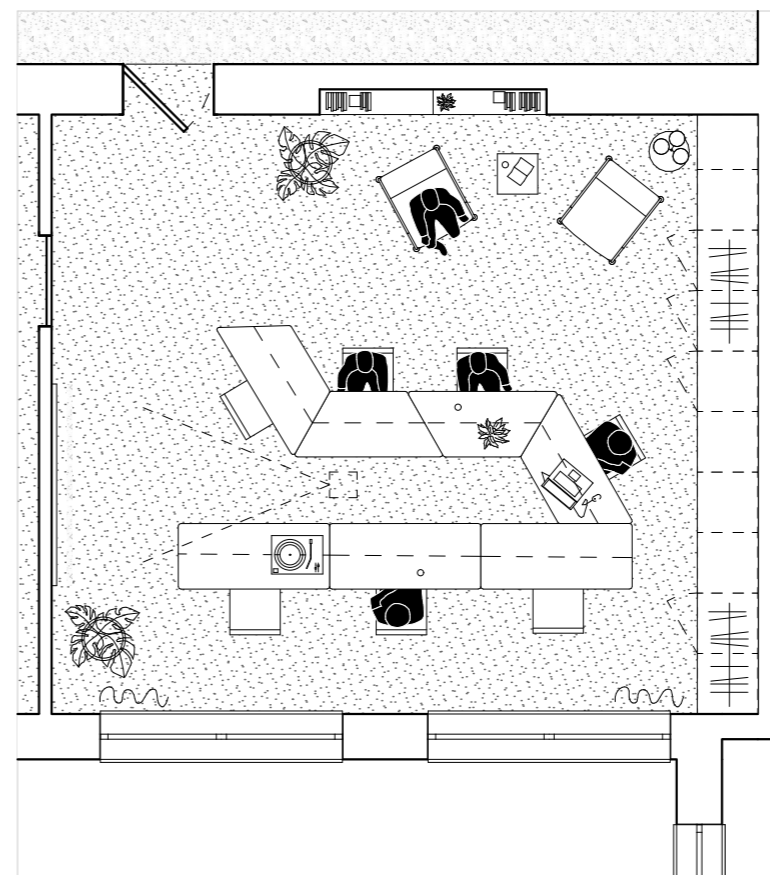
COFFE	2,50
ESPRESSO	2,50
MACCIATO	3,00
CAPPUCINO	3,50
LATTE	4,00
MOCHA	5,00
TEA	2,50
CHAI	4,00
COLDBREW	4,00



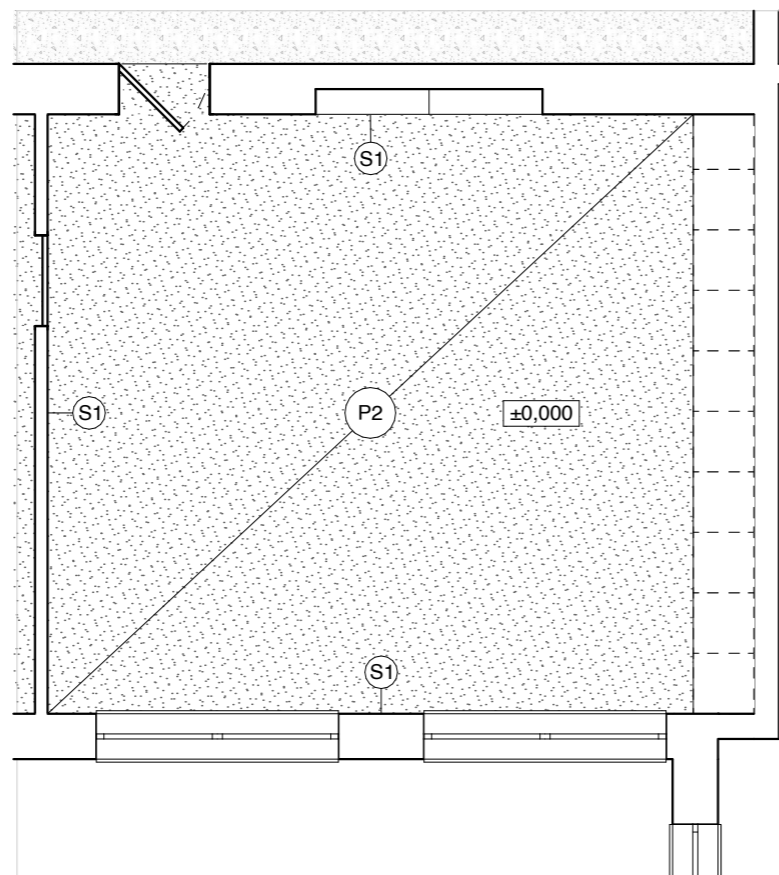




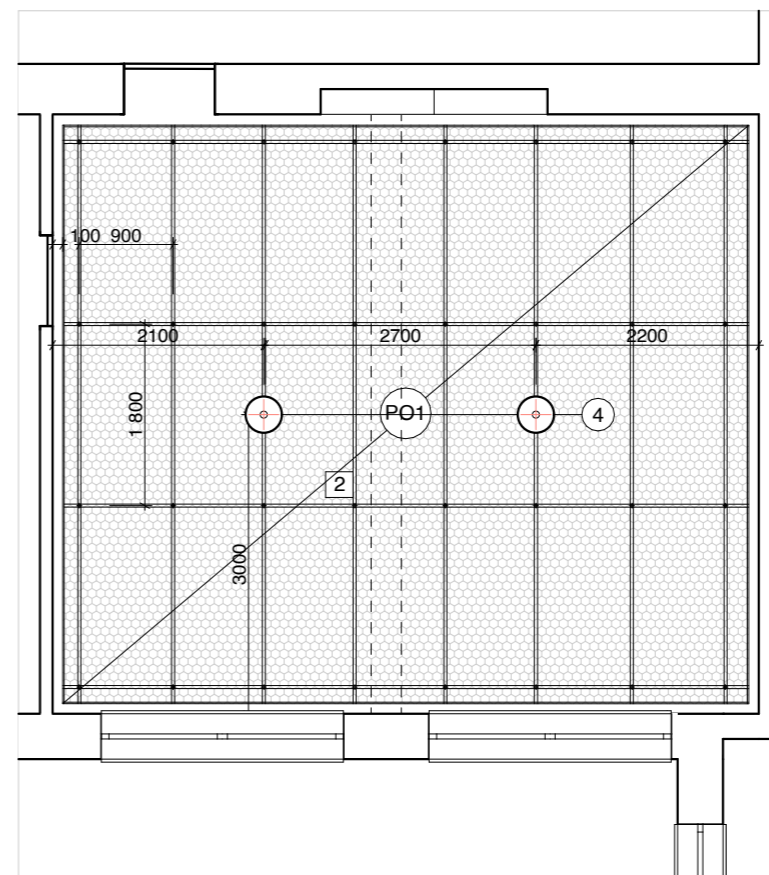
ALTERNATIVE 1 - individual work



ALTERNATIVE 2 - meeting

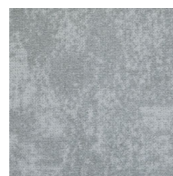


VÝKRES PODLÁH

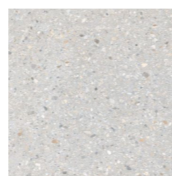


VÝKRES PODHLADU A OSVETLENIA

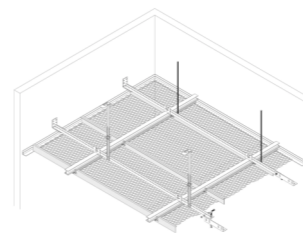
Ⓟ Záťažový koberec Interface CE 100 Emulate 4314010



Ⓢ Terazzový monolitický sokel v. 80 mm h. 15 mm



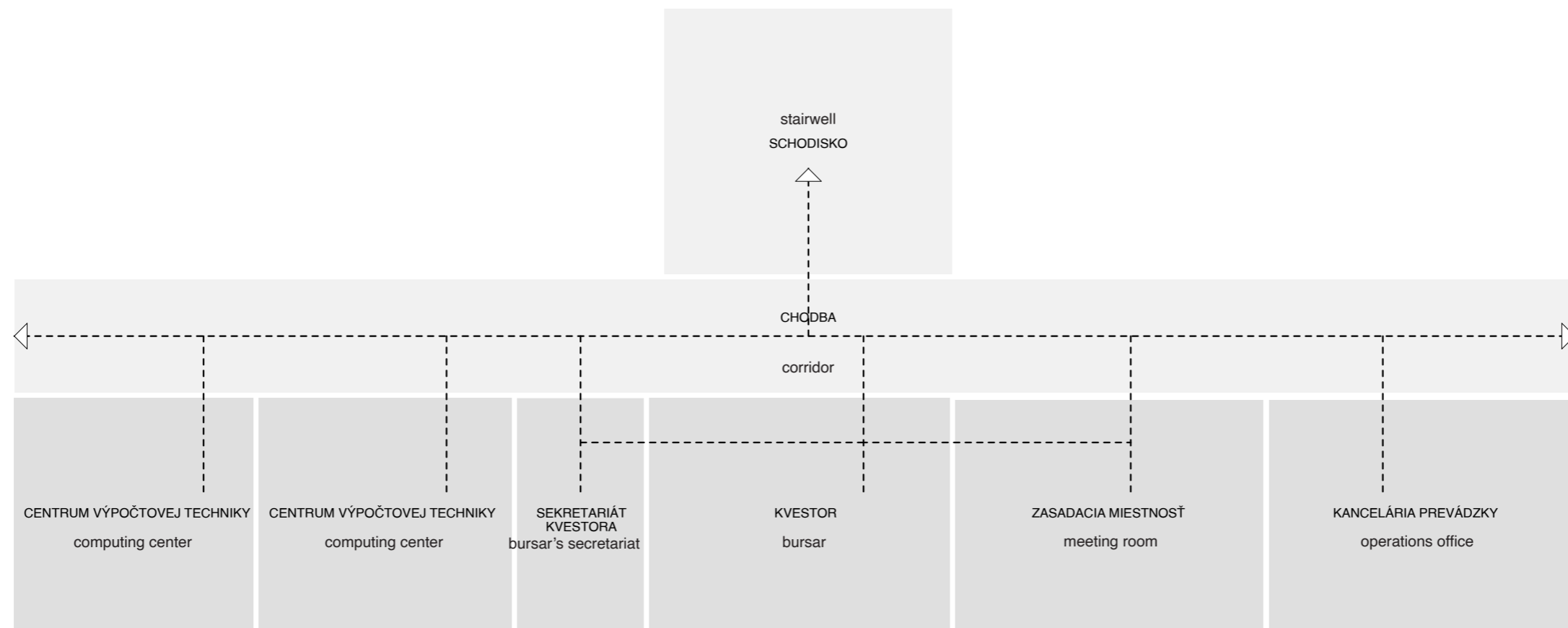
Ⓟ Systémový podhl'ad z ľahokovu Durlum S10 H RHOMBOS Double-hook system, zavesený ostrovne Rozmer panela 1500 x 900 mm Kosoštvorcový typ oka, veľkosť oka 25x16x2x1,5 mm MM RAL 906 Matná

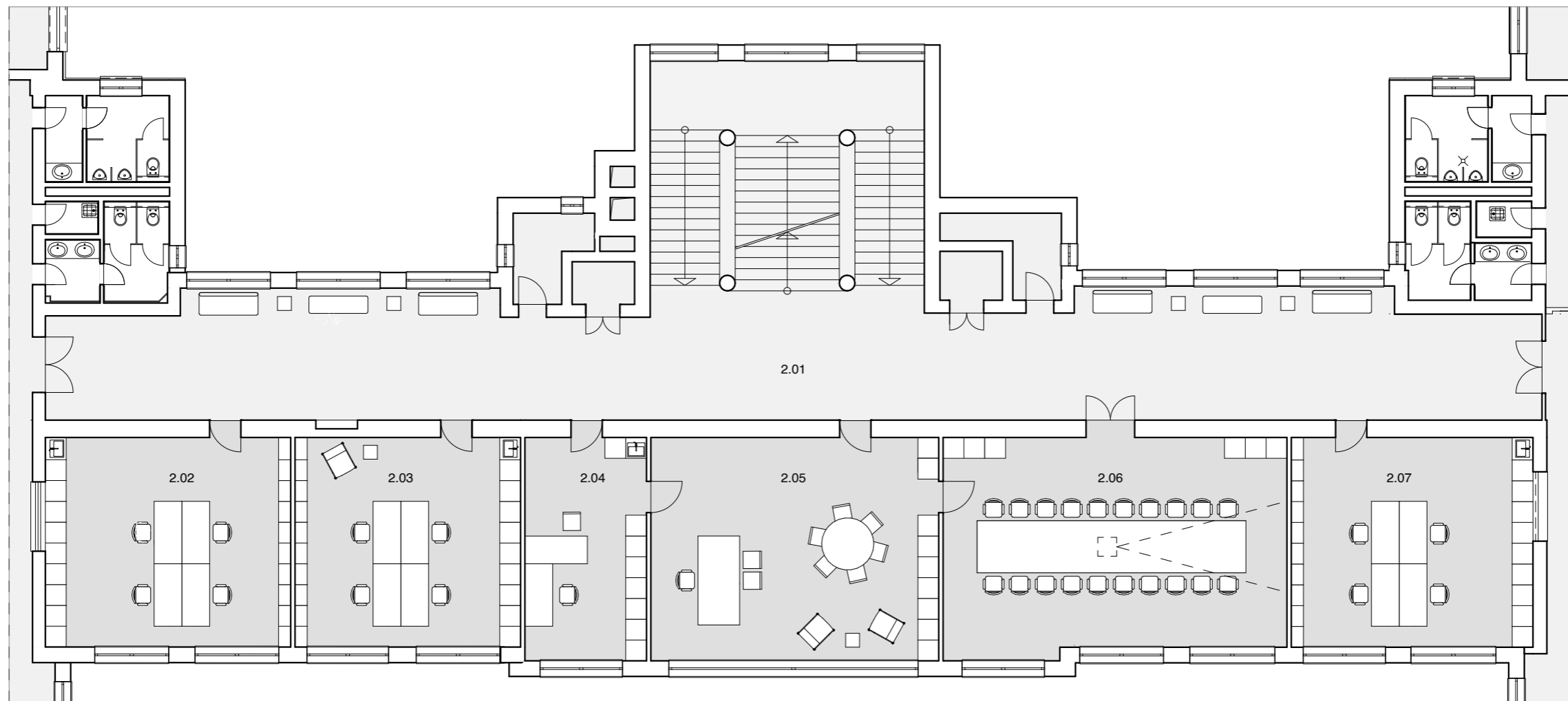


Ⓞ Interiérové závesné svietidlo HermanMiller Nelson Ball Bubble Pendant, priemer 375 MM



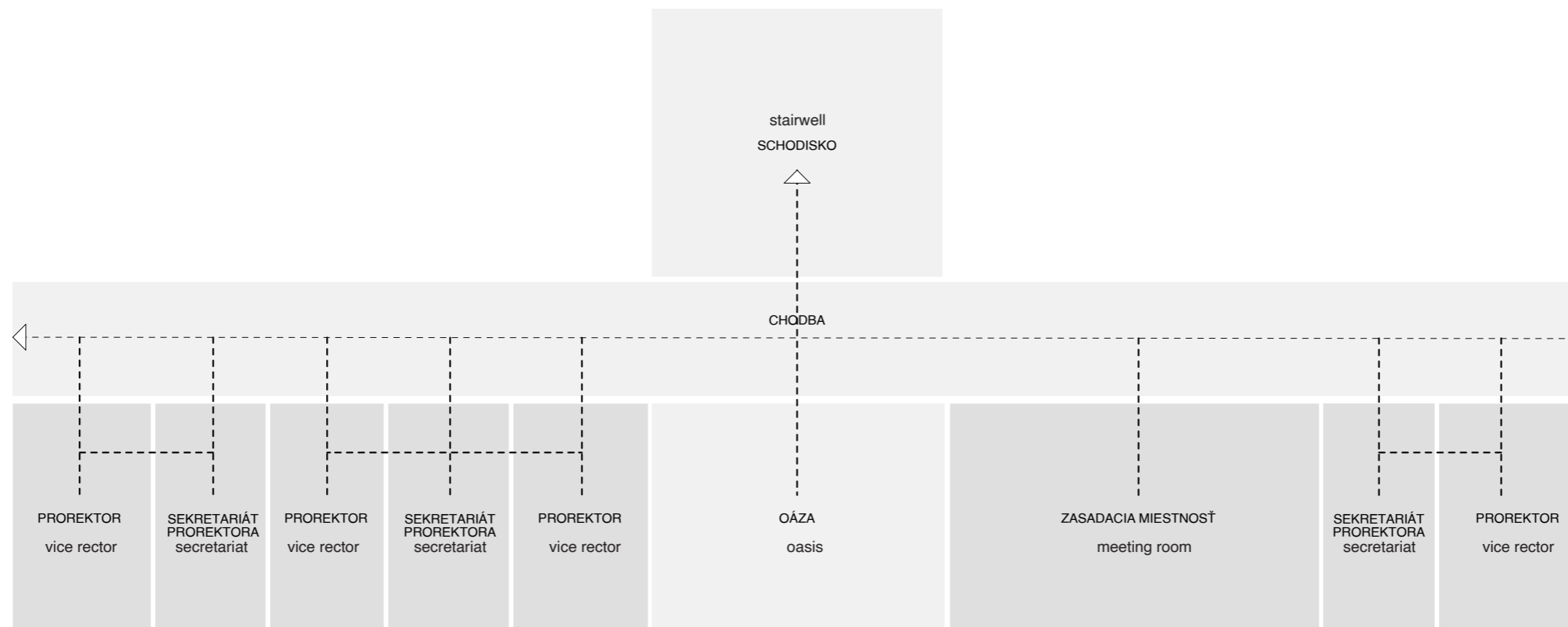


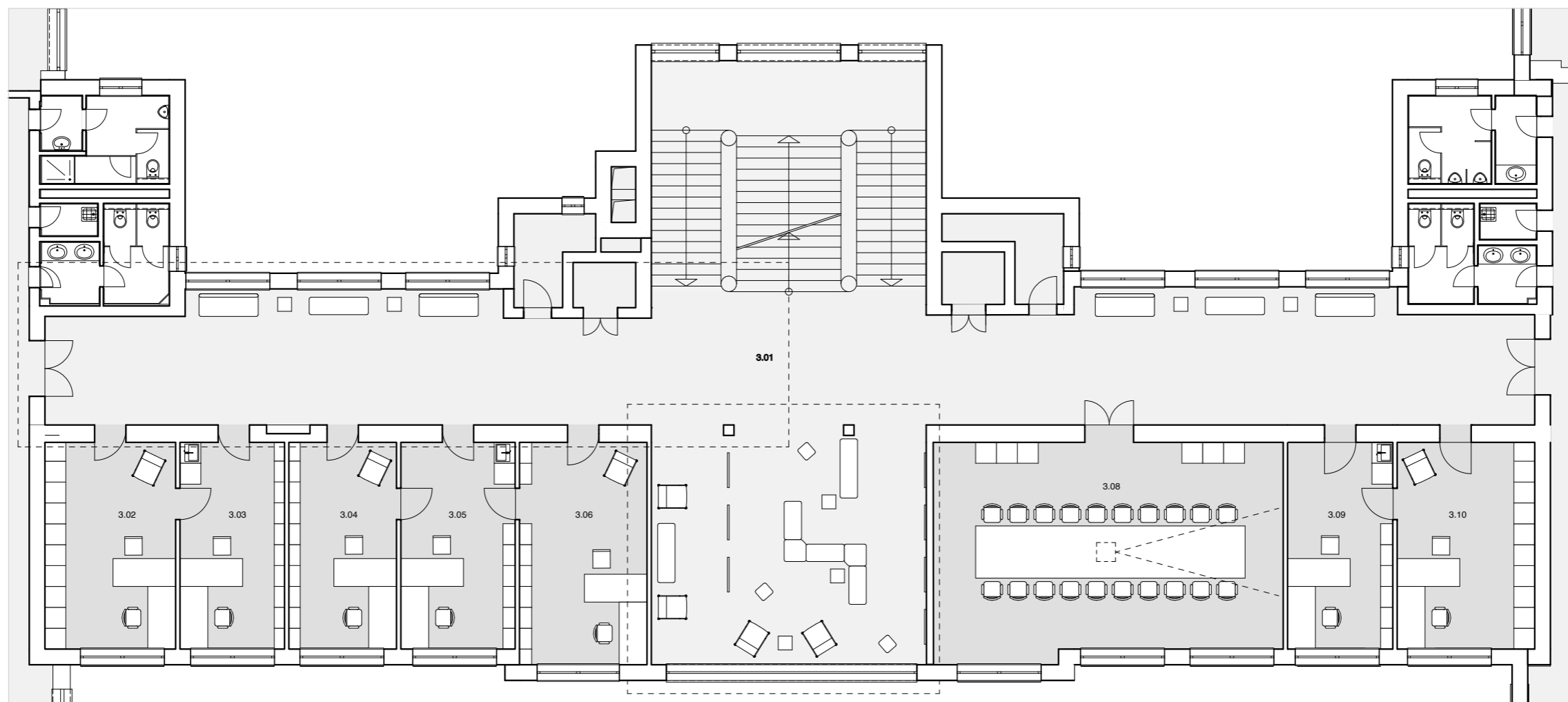




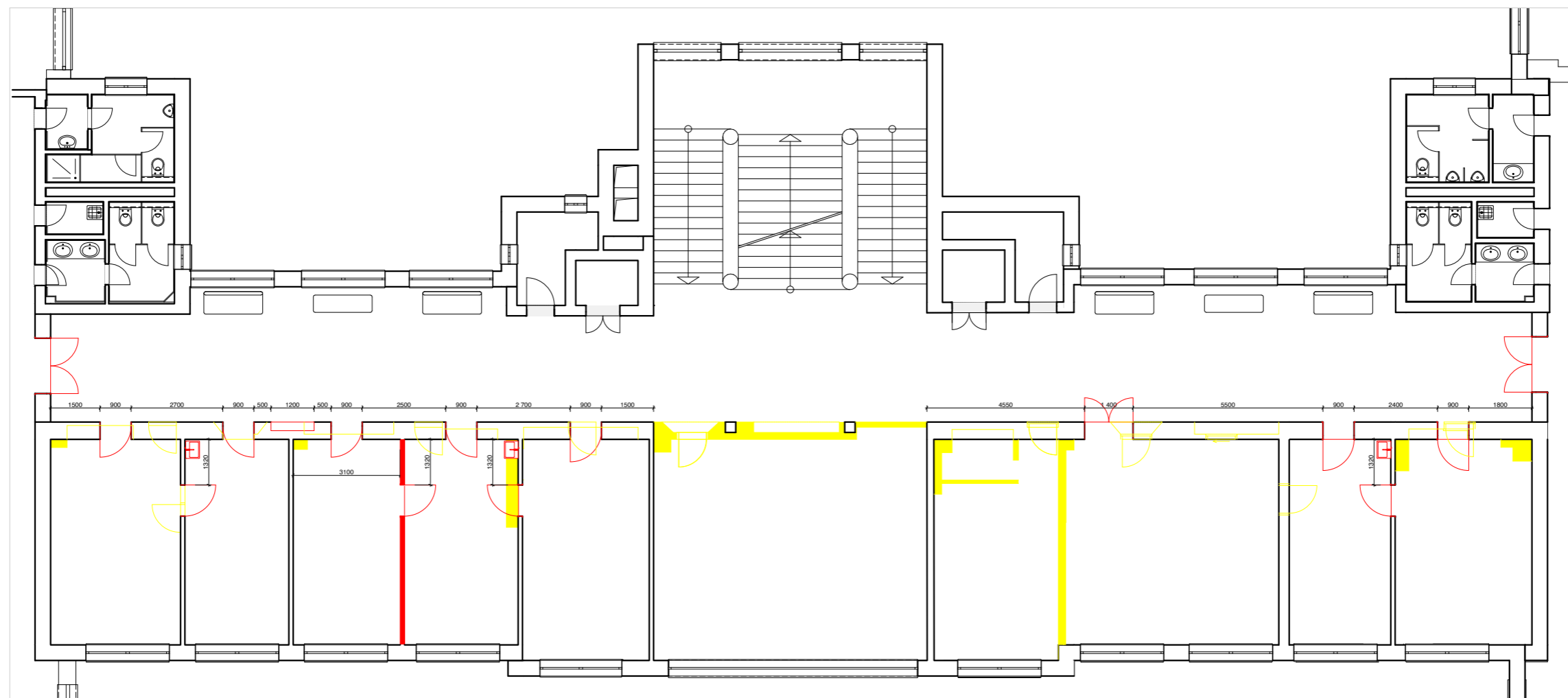
- 2.01 CORRIDOR
- 2.02 COMPUTING CENTER
- 2.03 COMPUTING CENTER
- 2.04 BURSAR'S SECRETARIAT
- 2.05 BURSAR'S OFFICE
- 2.06 MEETING ROOM
- 2.07 OPERATIONS OFFICES



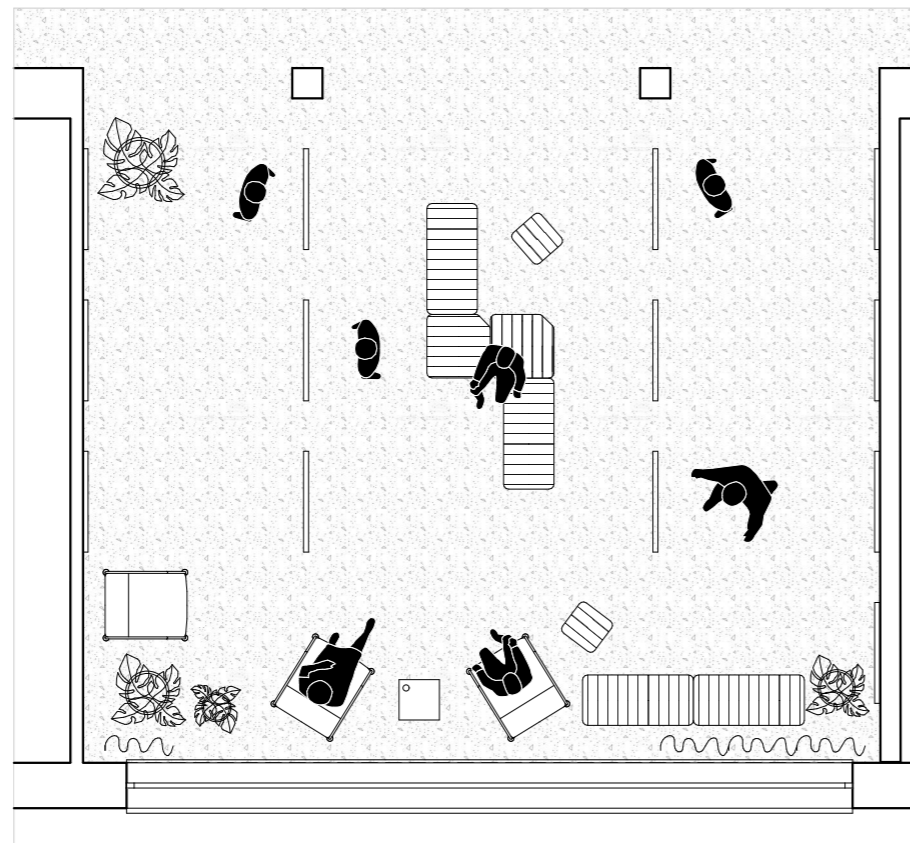




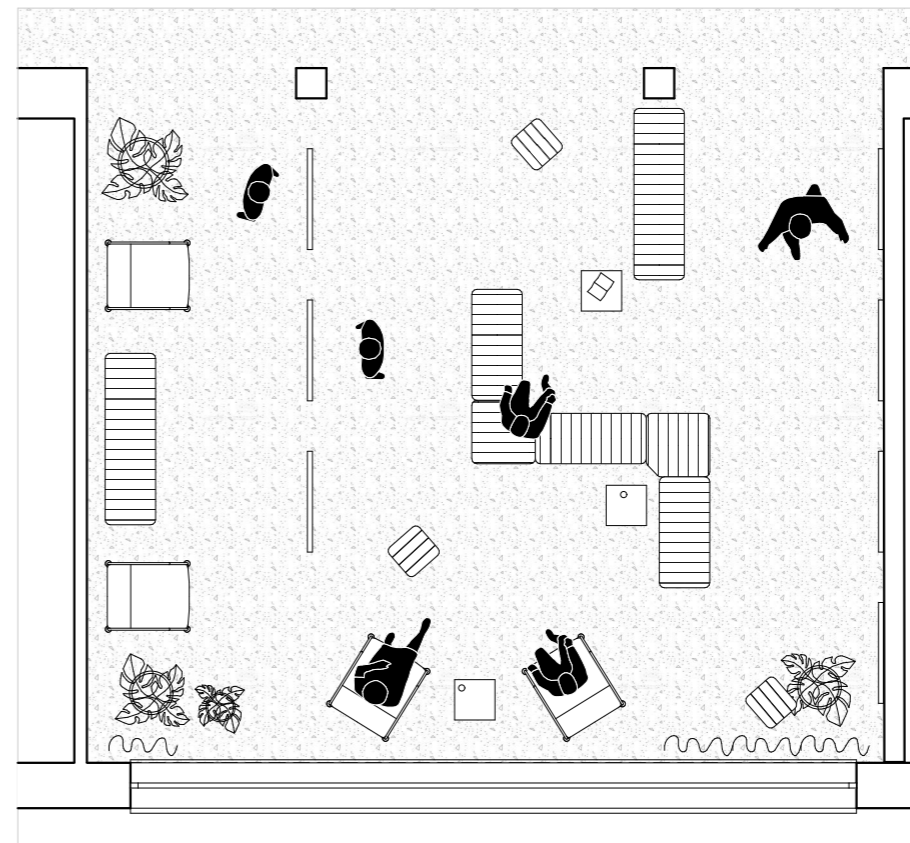
- 3.01 CORRIDOR**
- 3.02 VICE-RECTOR'S OFFICE
- 3.03 SECRETARIAT OFFICE
- 3.04 VICE-RECTOR'S OFFICE
- 3.05 SECRETARIAT OFFICE
- 3.06 VICE-RECTOR'S OFFICE
- 3.07 OASIS**
- 3.08 MEETING ROOM
- 3.09 SECRETARIAT OFFICE
- 3.10 VICE-RECTOR'S OFFICE



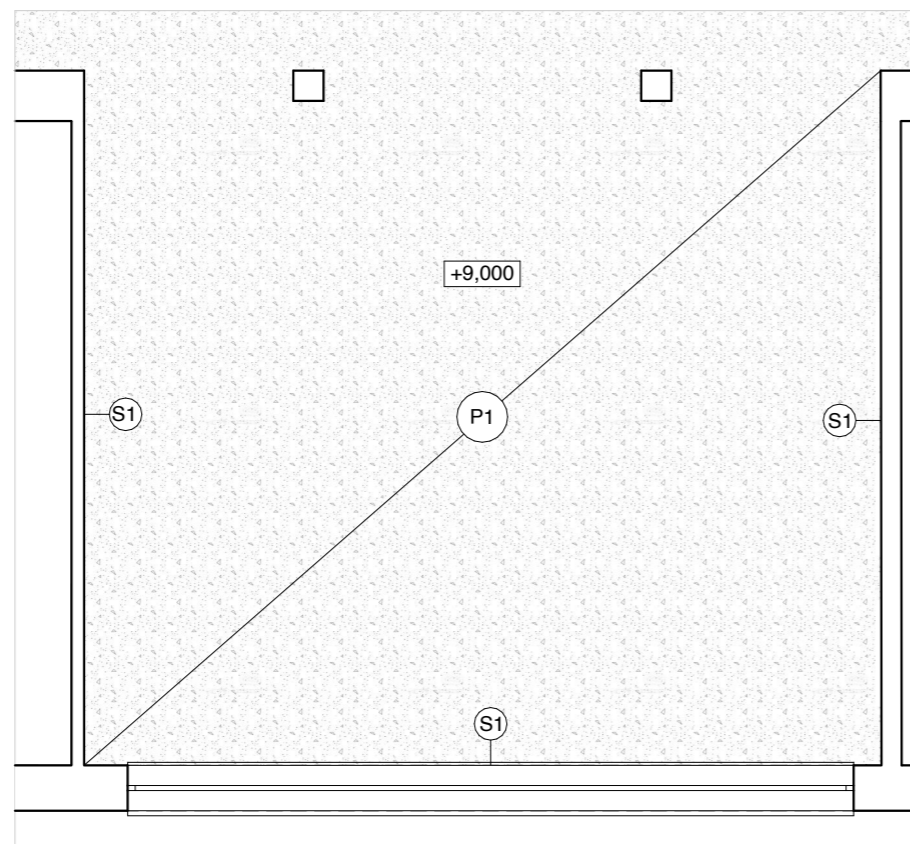
■ DEMOLISHED CONSTRUCTION  
■ NEW CONSTRUCTION



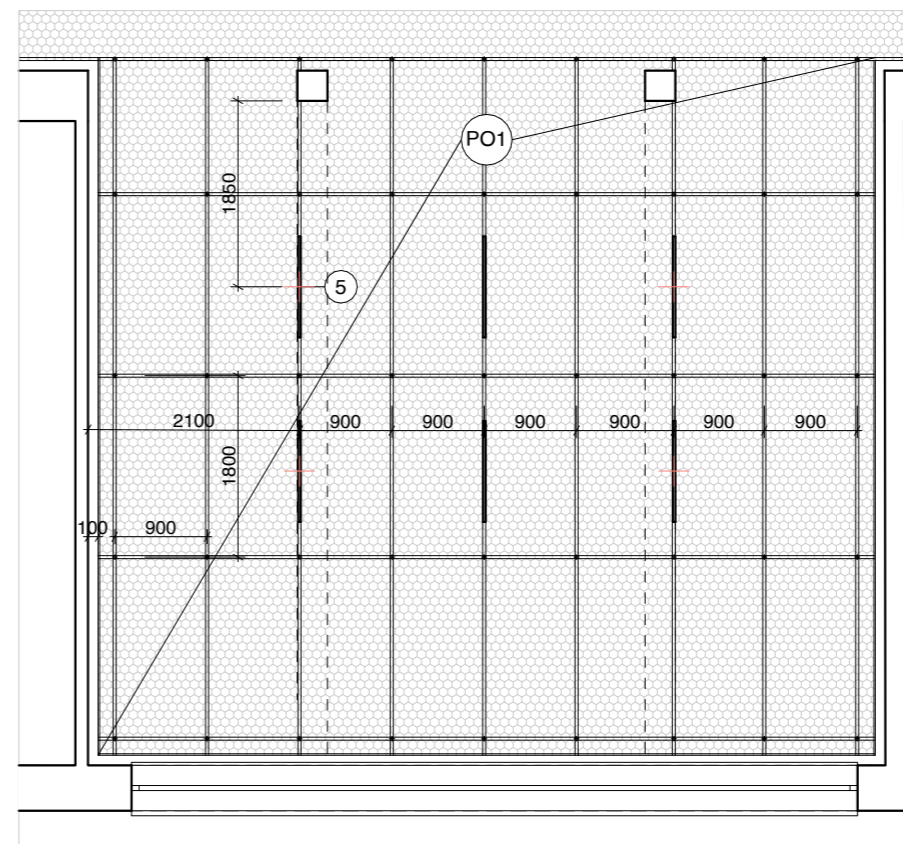
ALTERNATIVE 1



ALTERNATIVE 2



VÝKRES PODLÁH

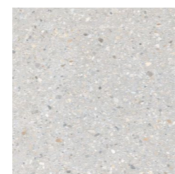


VÝKRES PODHLĀDU A OSVETLENIA

(P1) Pôvodná podlaha - terazzo

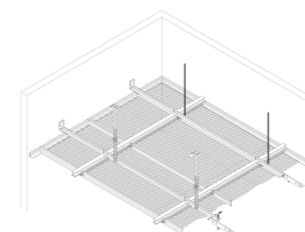


(S1) Terazzoový monolitický sokel v. 80 mm h. 15 mm



(PO1) Systémový podhl'ad z ťahokovu Durlum S10 H RHOMBOS Double-hook system, zavesený ostrovne Rozmer panela 1500 x 900 mm Kosoťtvorcový typ oka, veľkosť oka 25x16x2x1,5 mm MM RAL 906 Matná

(5) Globo - Bodové svietidlo 6xGU10/35W/230V matný chróm 120 x 60 x 1150 MM

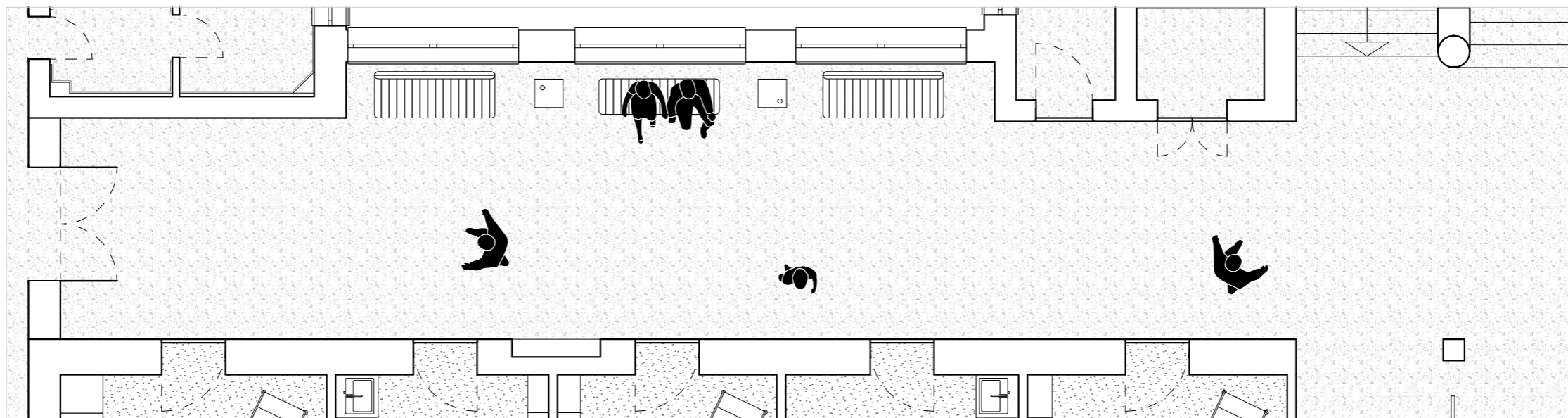










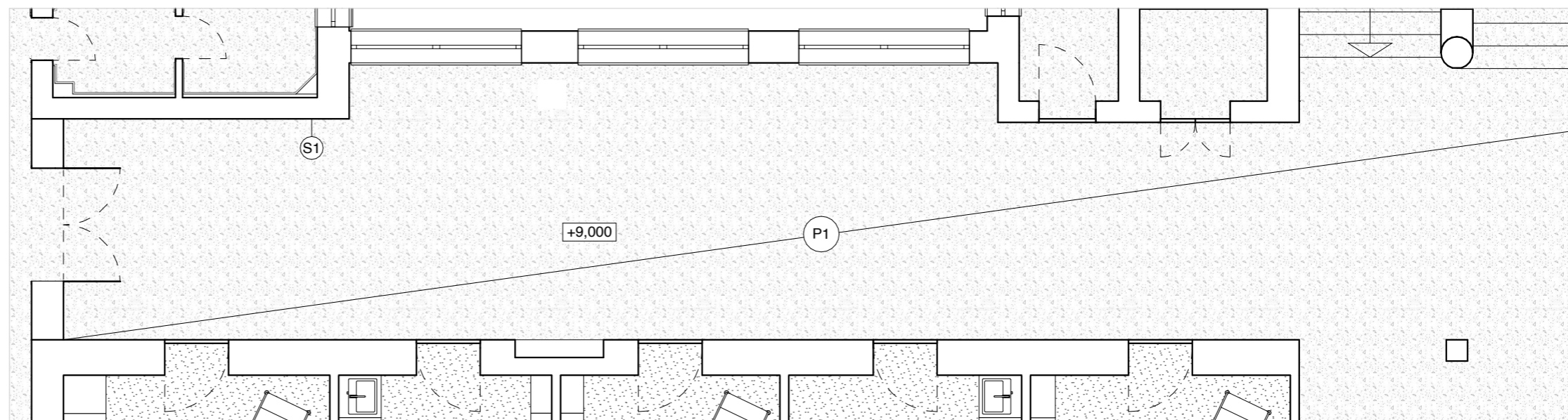




P1 Pôvodná podlaha - terazzo

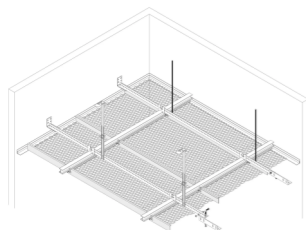


S1 Terazzový monolitický sokel v. 80 mm h. 15 mm

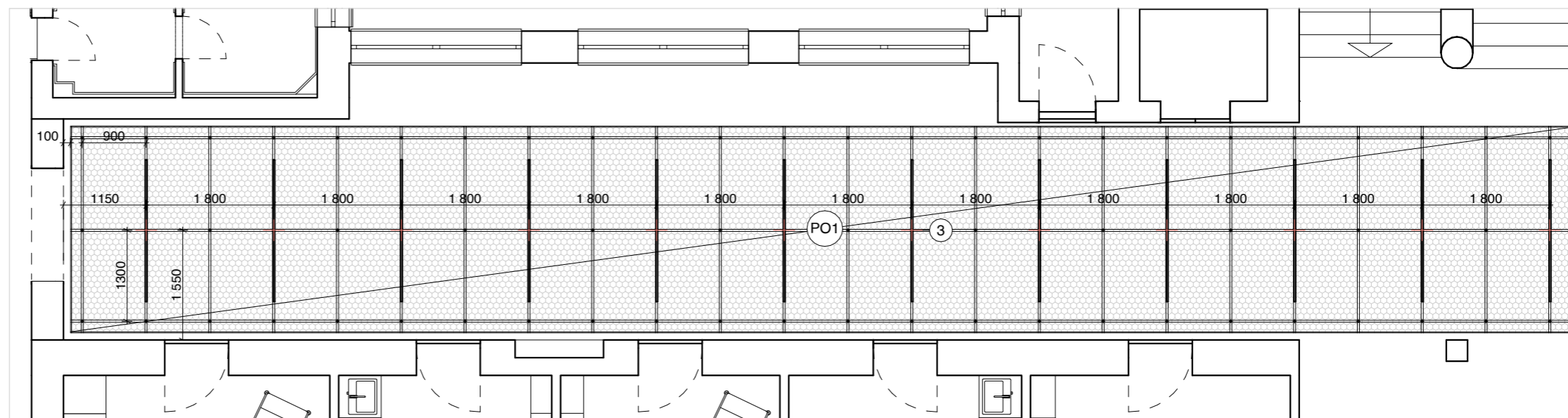


VÝKRES PODLÁH

PO1 Systémový podhľad z ťahokovu Durlum S10 H RHOMBOS Double-hook system, zavesený ostrovne  
Rozmer panela 1500 x 900 mm  
Kosoštvorcový typ oka, veľkosť oka 25x16x2x1,5 mm MM  
RAL 906 Matná



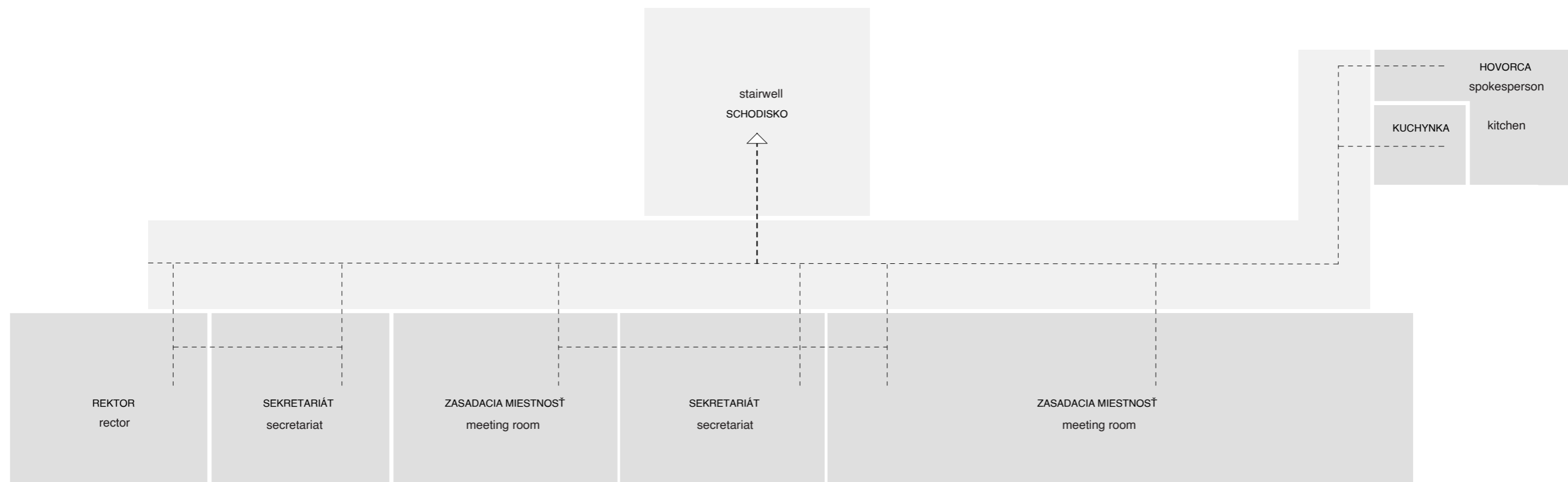
3 Interiérové závesné LED líniové svetidlo s kruhovím prútom, 2000 x 20 MM (na mieru)

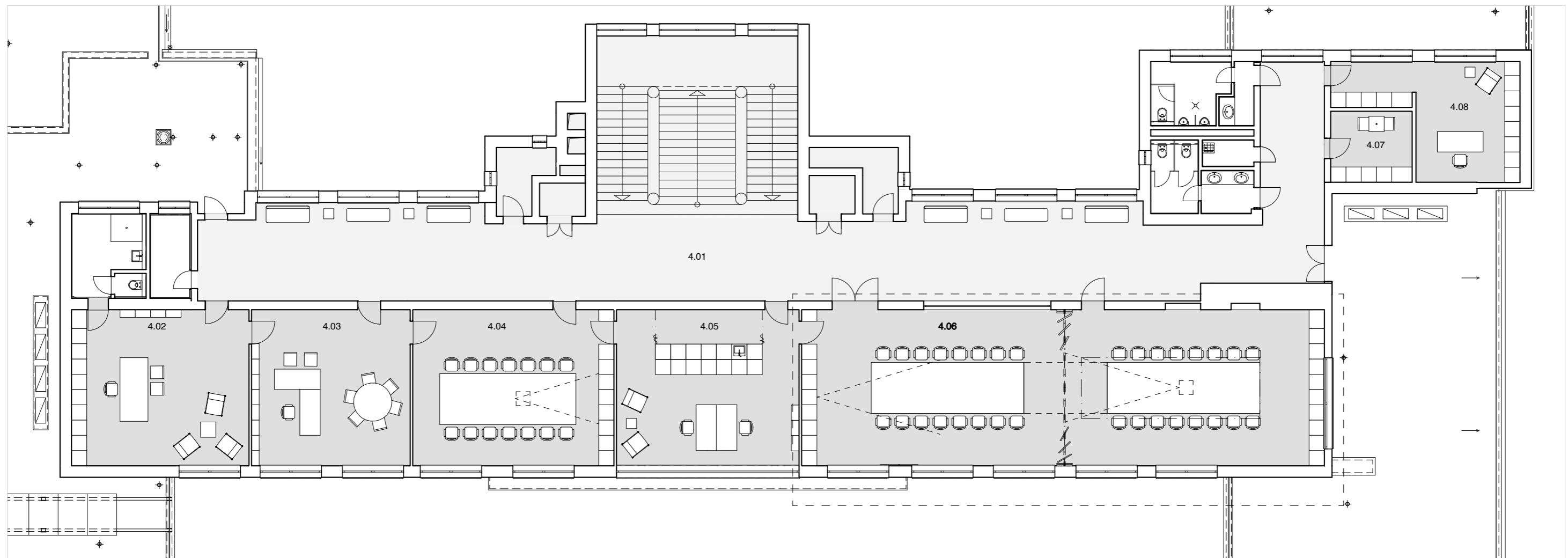


VÝKRES PODHLADU A OSVETLENIA

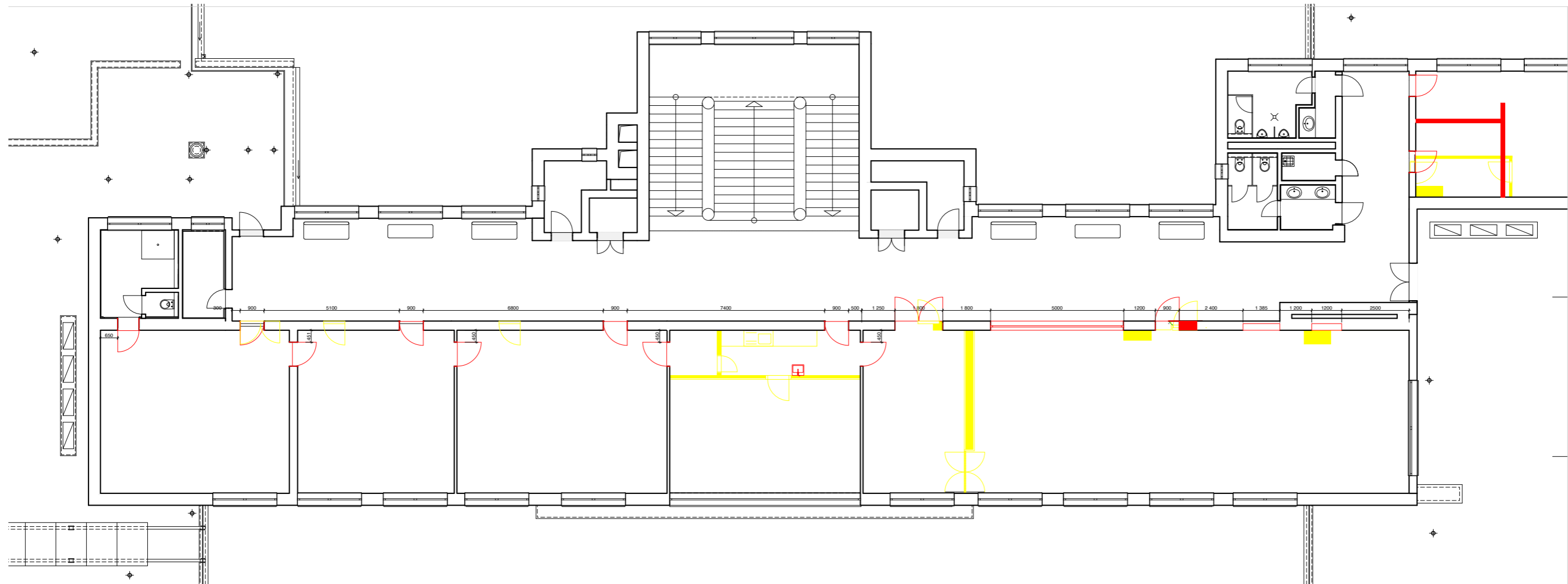




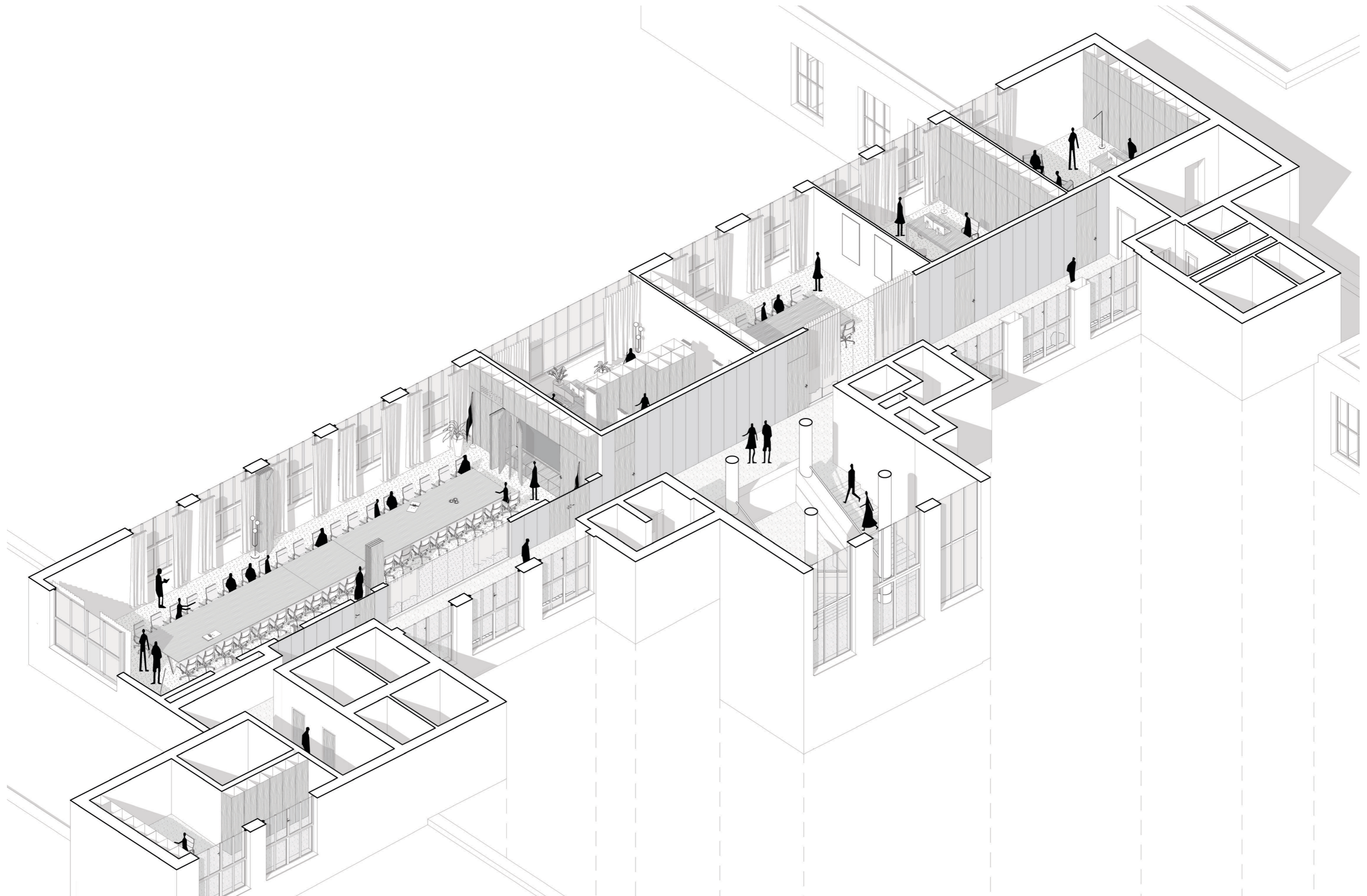


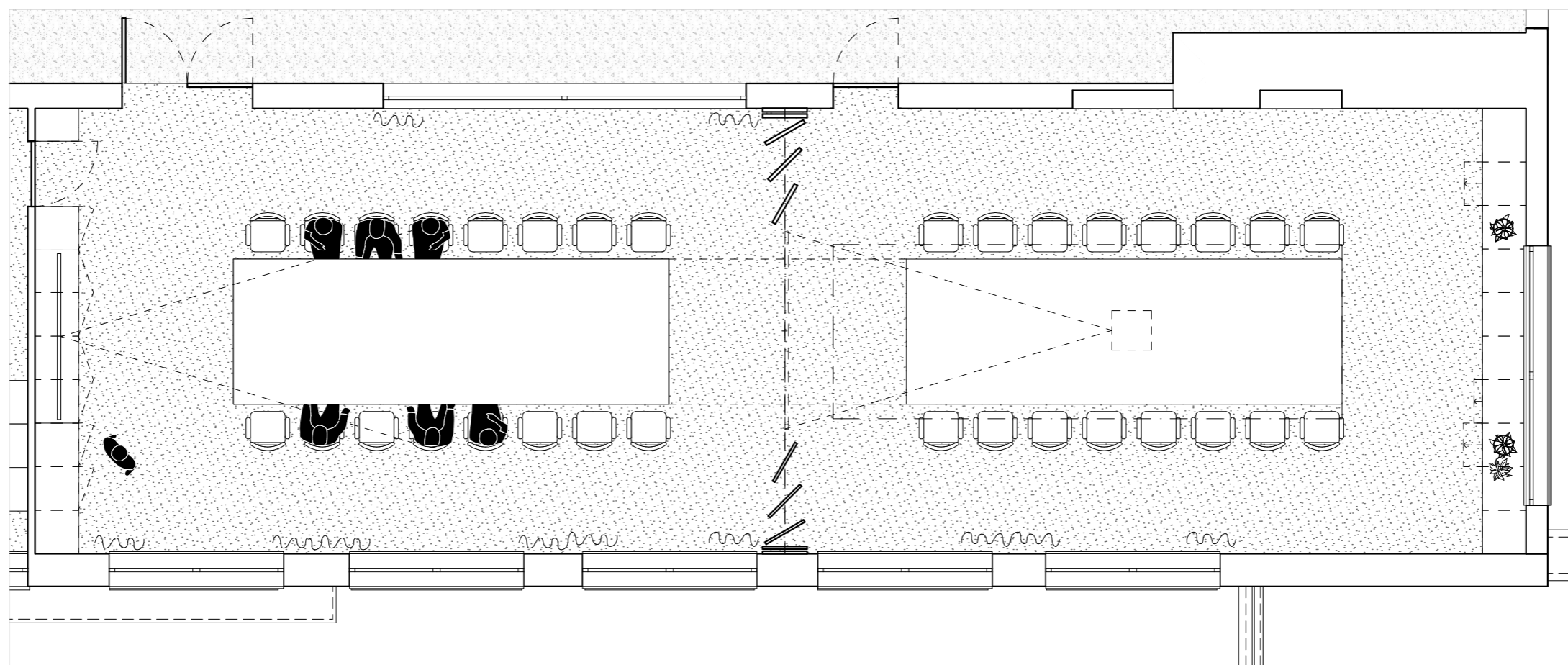


- 4.01 CORRIDOR
- 4.02 RECTOR'S OFFICE
- 4.03 SECRETARIAT OFFICE
- 4.04 MEETING ROOM
- 4.05 SECRETARIAT OFFICE
- 4.06 MEETING ROOM**
- 4.07 KITCHENETTE
- 4.08 SPOKESPERSON'S OFFICE

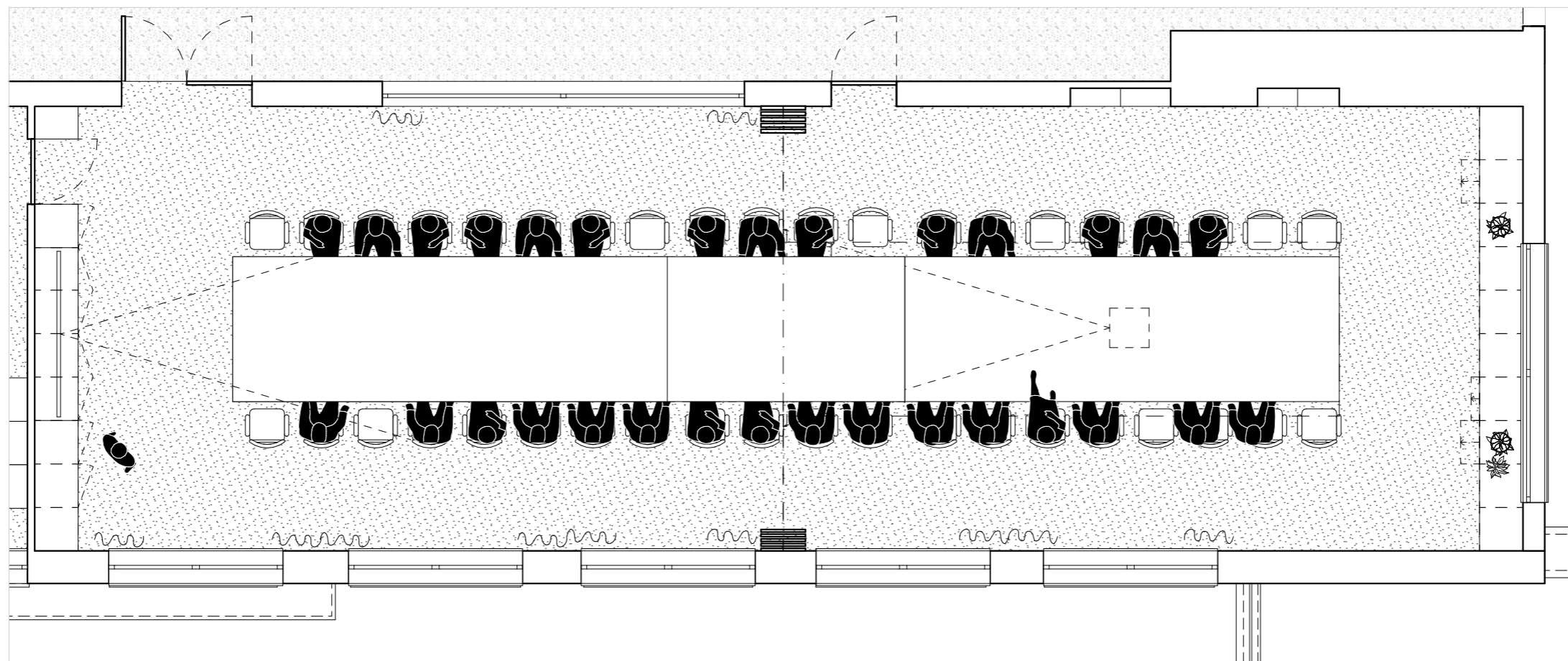


DEMOLISHED CONSTRUCTION  
NEW CONSTRUCTION





ALTERNATIVE 1 - 2 meeting rooms

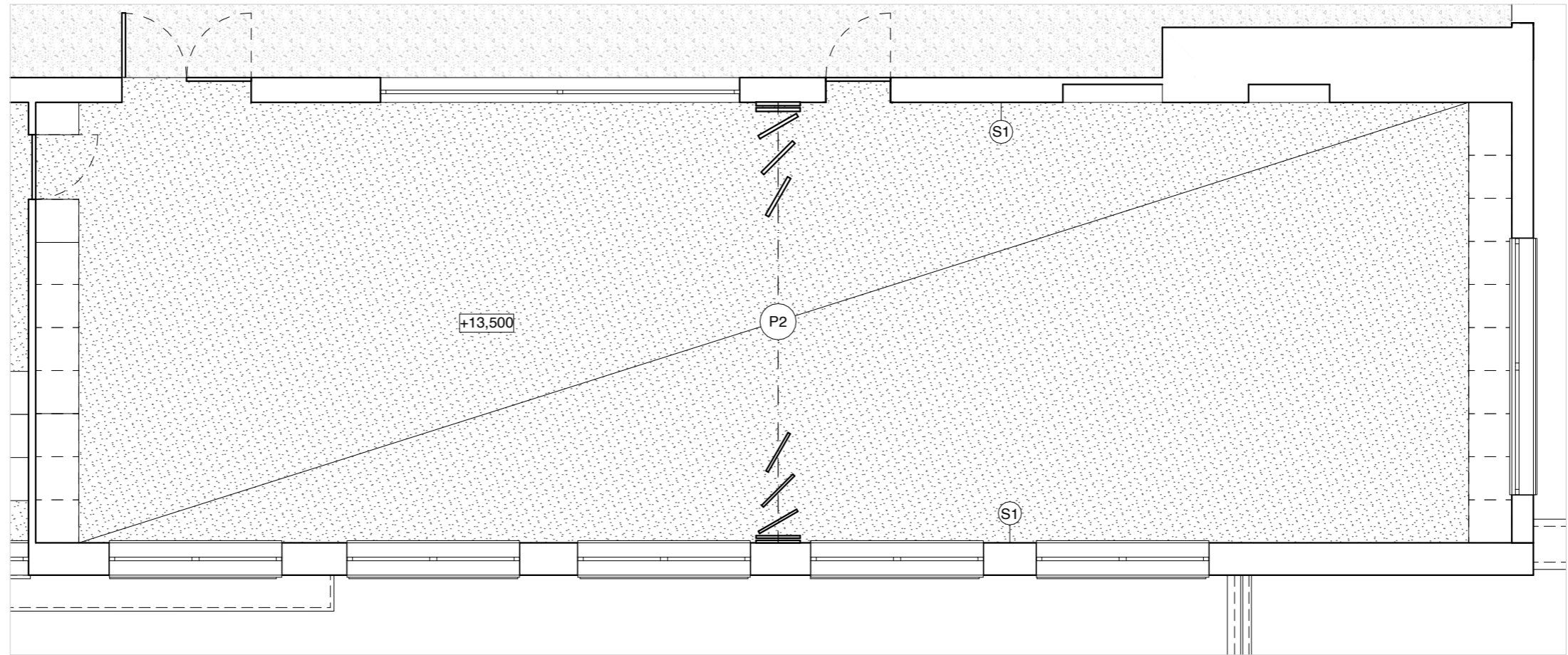
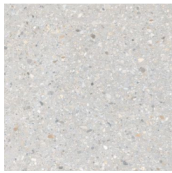


ALTERNATIVE 1 - 1 meeting room

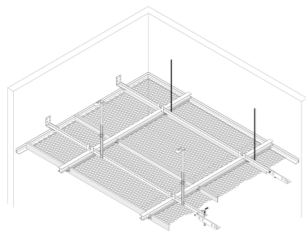
(P2) ZÁŤAŽOVÝ KOBEREK INTERFACE  
CE 100 Emulate 4314010



(S1) Terazzový monolitický sokel  
v. 80 mm h. 15 mm



(PO1) Systémový podhľad z ťahokovu Durlum S10 H RHOMBOS  
Double-hook system, zavesený ostrovne  
Rozmer panela 1500 x 900 mm  
Kosoštvorcový typ oka, veľkosť oka 25x16x2x1,5 mm MM  
RAL 906 Matná



(1) Interiérové závesné LED líniové svetidlo s  
kruhovfím pro'ľom, 2500 x 20 MM (na mieru)

(2) Projektor Epson EB 685 W biely

(PS) Pôvodný svetlík

