

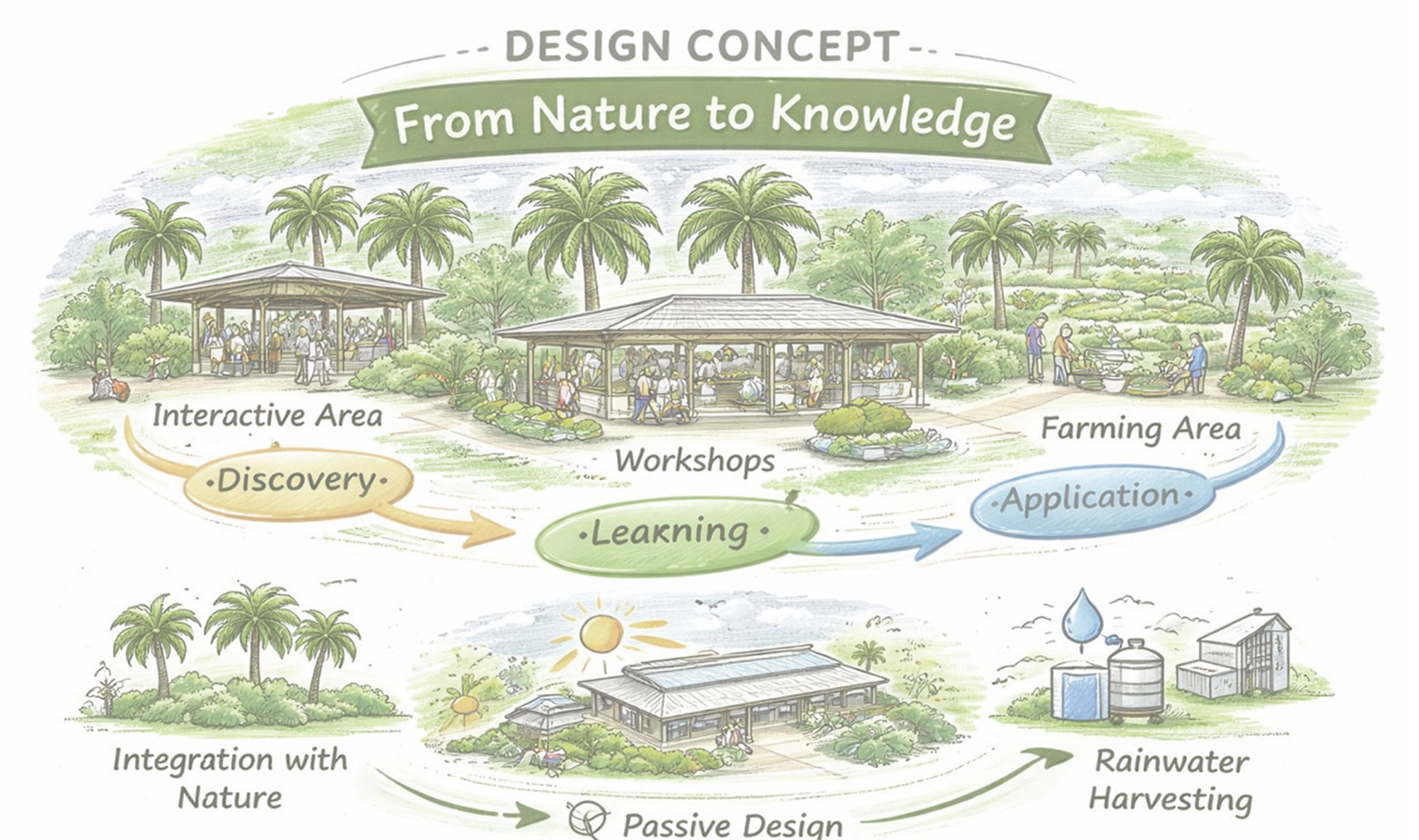


COCONUTALES

PROJECT INTRODUCTION

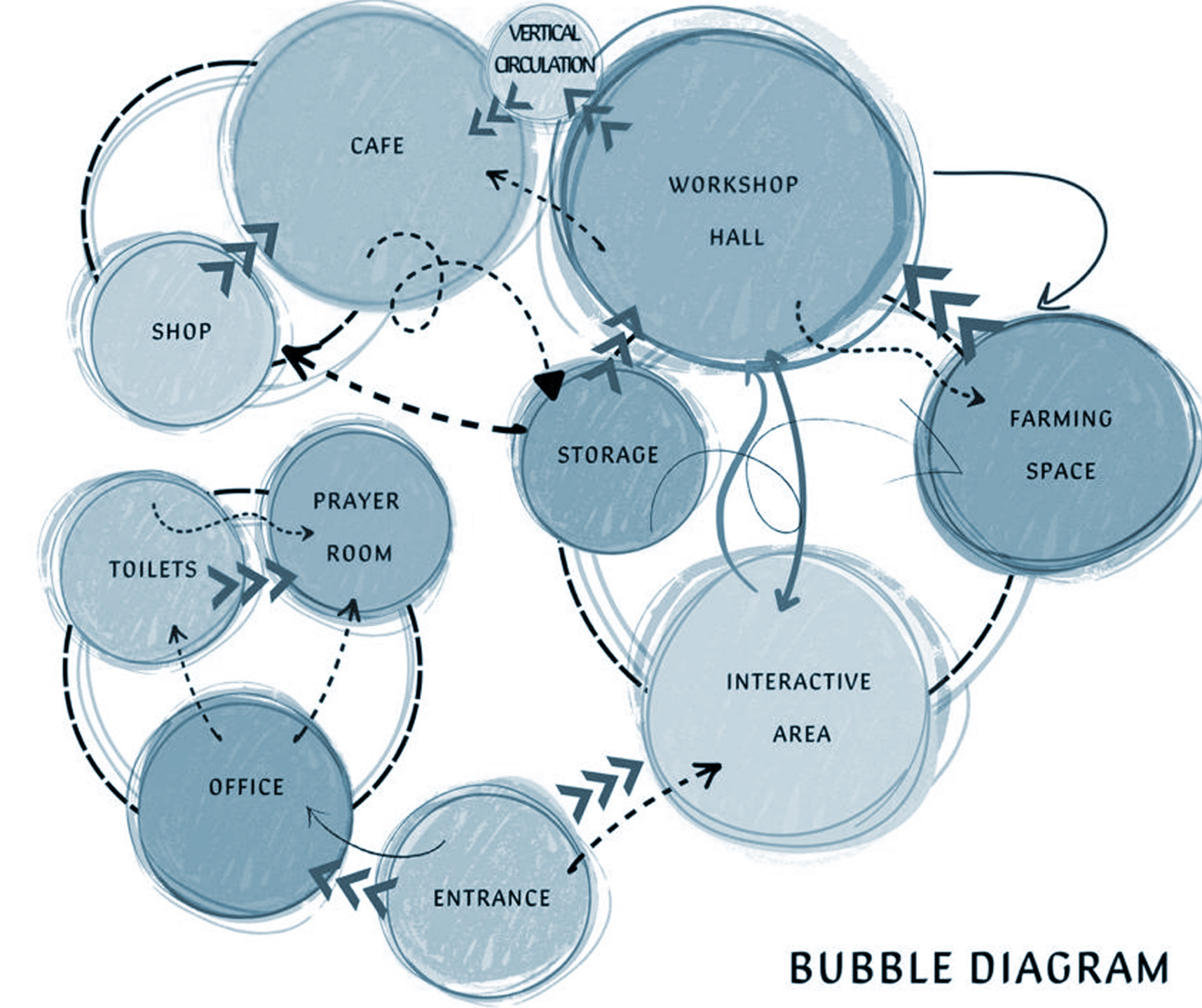
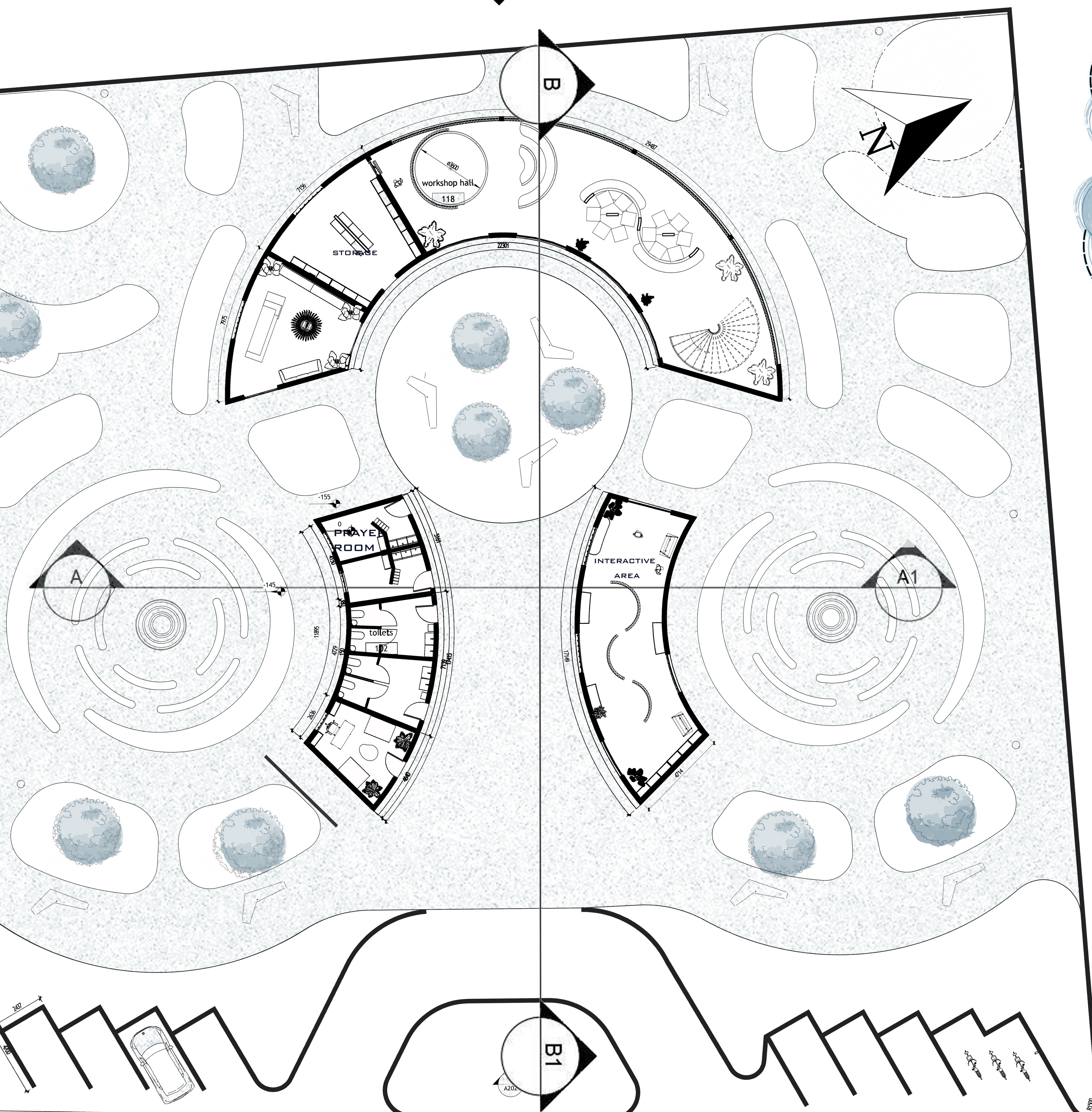
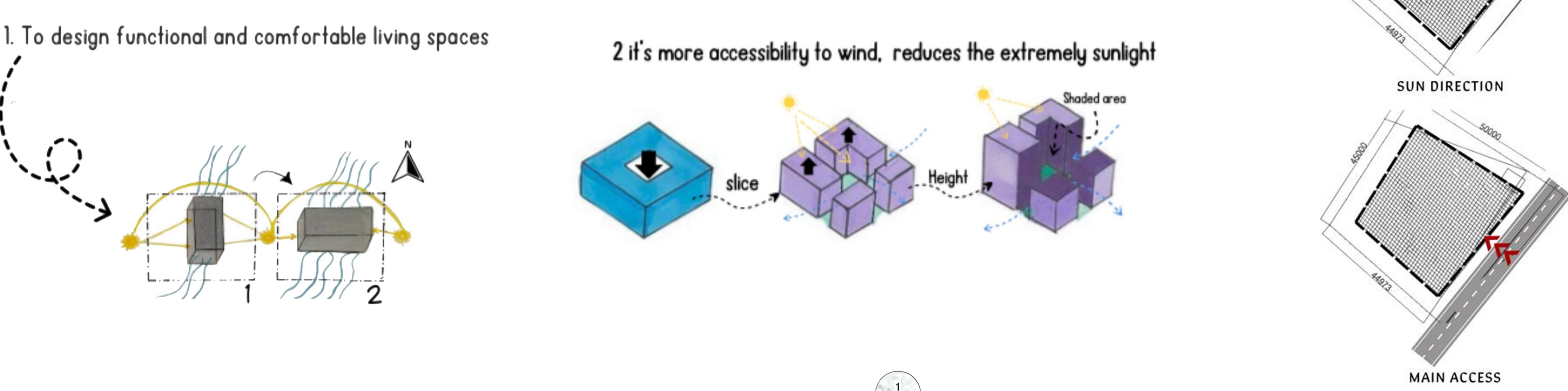
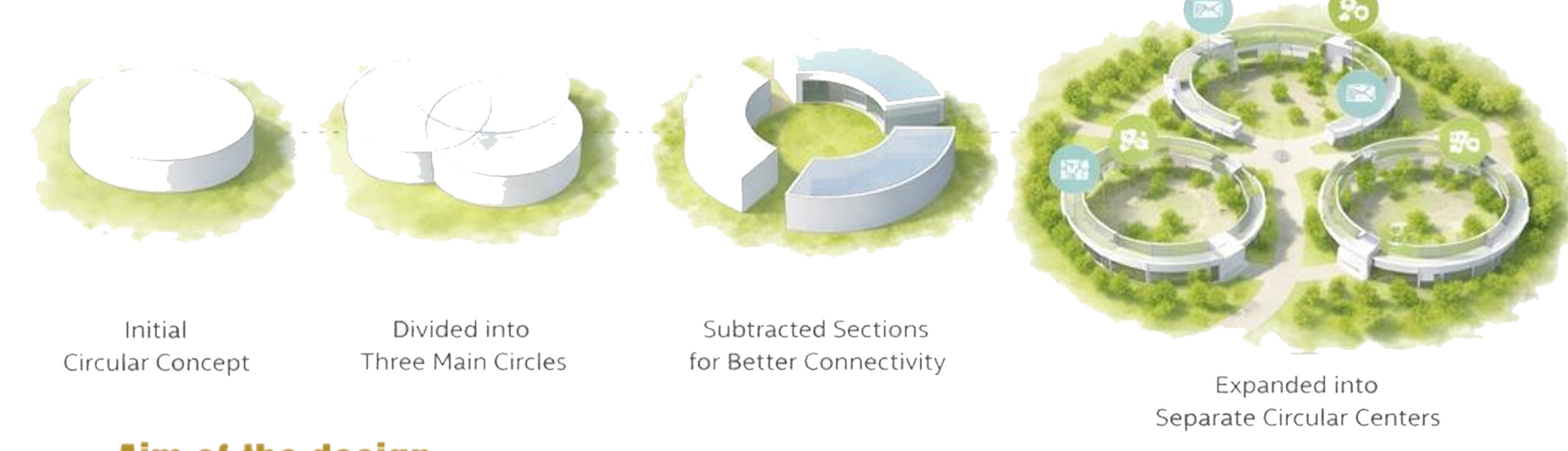
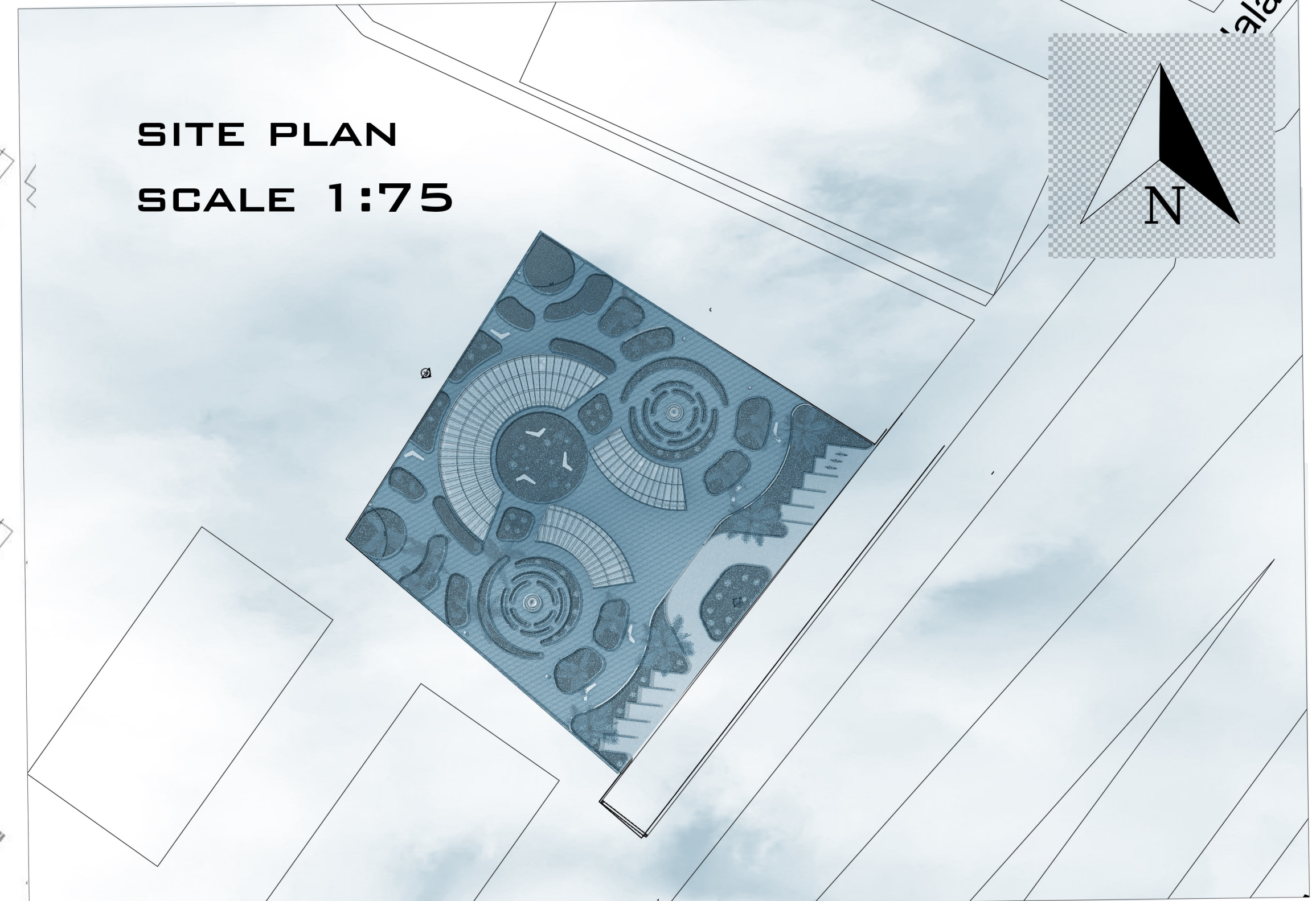
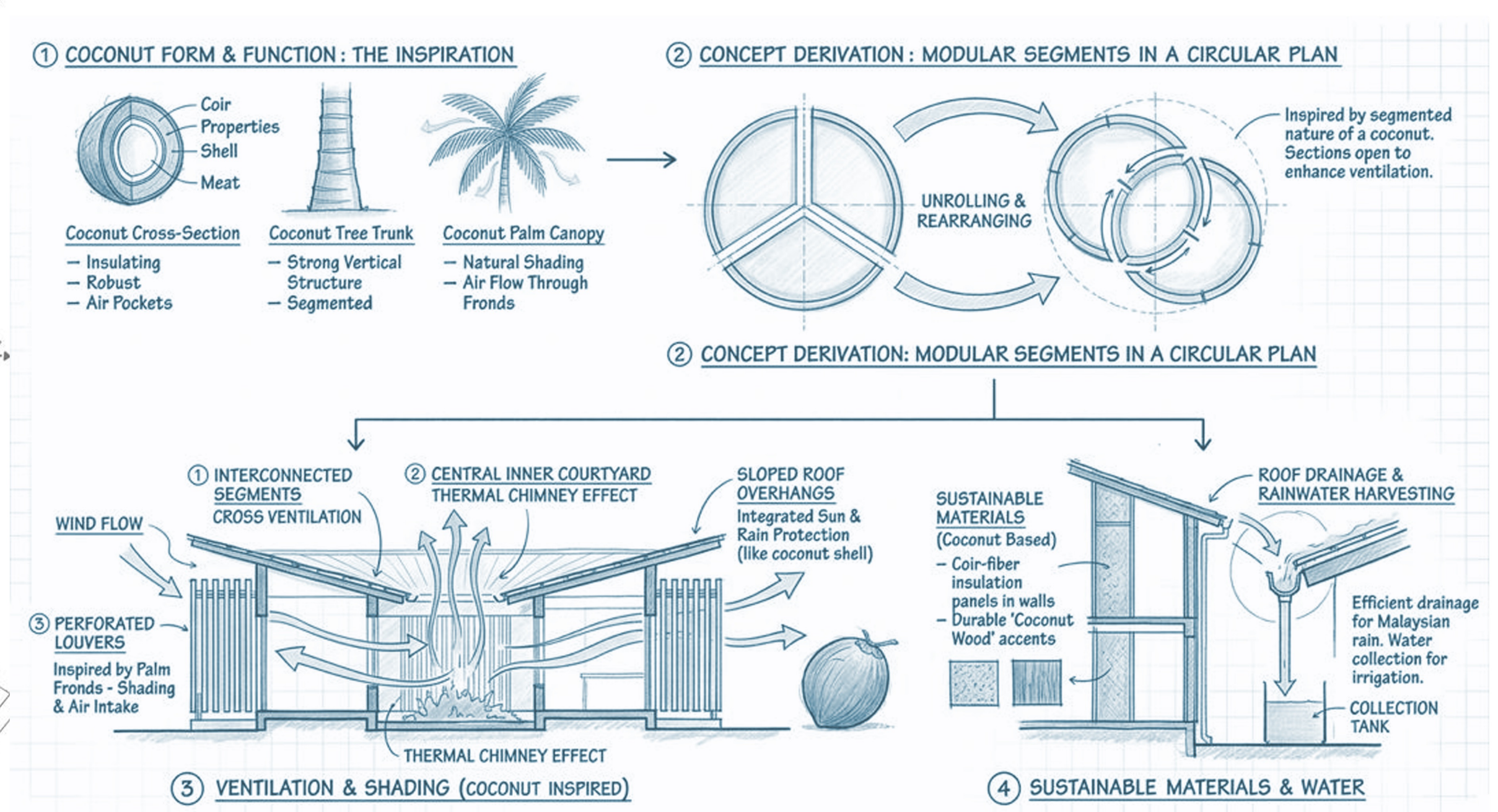
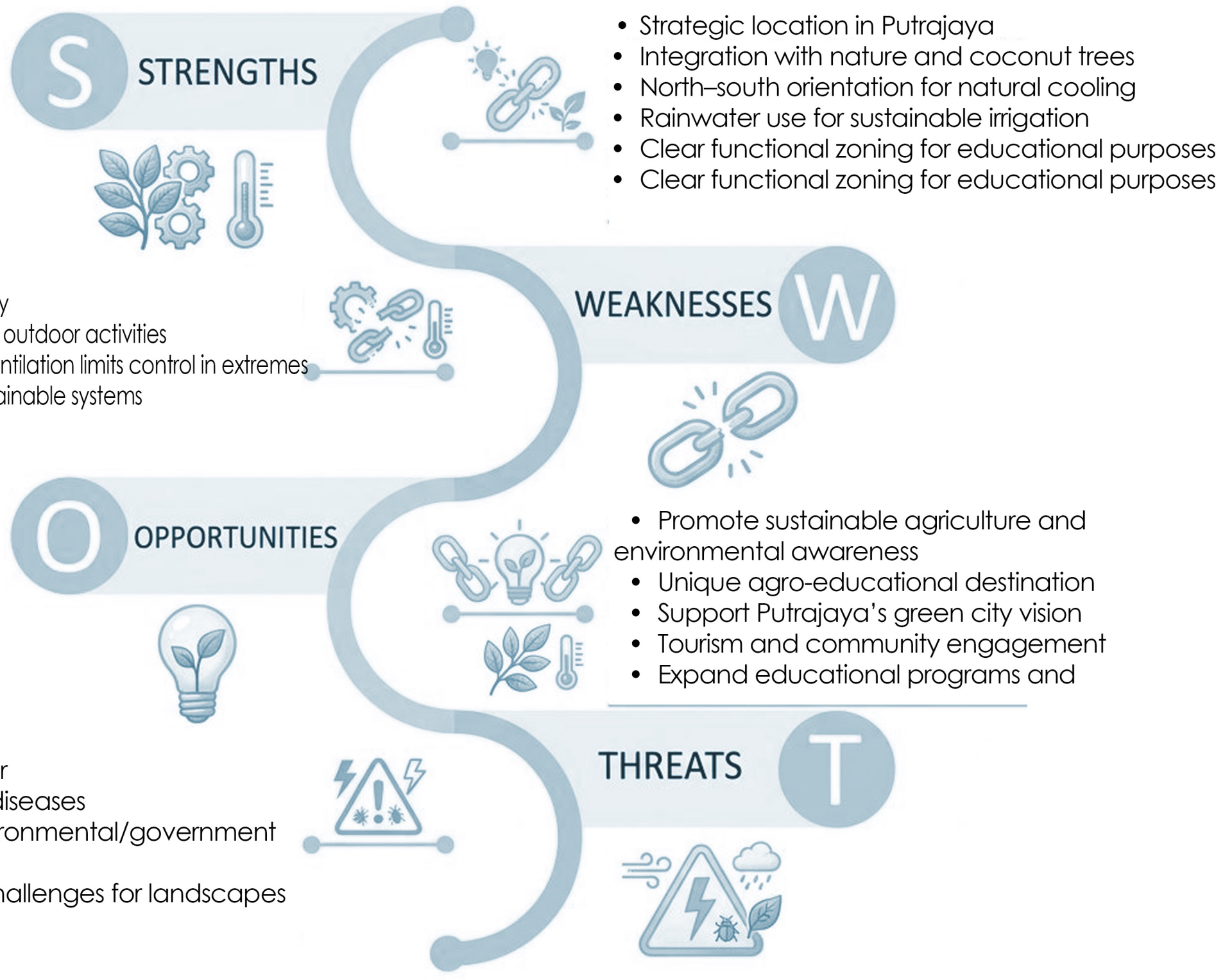
This project is designed as an educational agricultural hub that reconnects users with farming through a spatial and experiential approach. The design integrates learning, movement, and interaction within a productive landscape, where users can explore, observe, and participate in sustainable agricultural practices.

The project focuses on creating a functional and engaging environment that enhances awareness, encourages hands-on learning, and strengthens the relationship between people, nature, and food production.



KEY PLAN

LOCATION PLAN



CASE STUDIES
MAEPS — MALAYSIA AGRO EXPOSITION PARK SERDANG (LOCAL CASE STUDY)

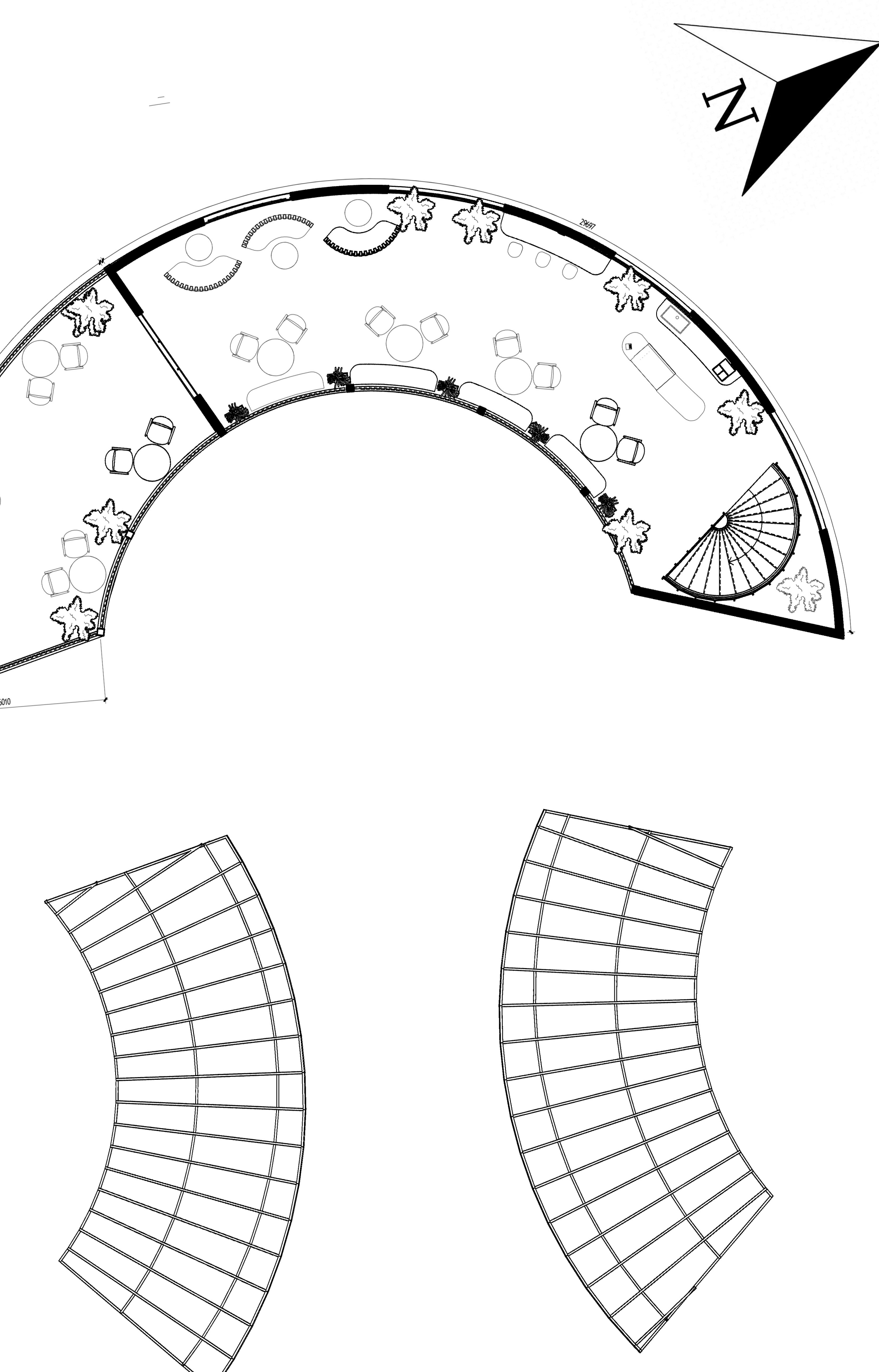
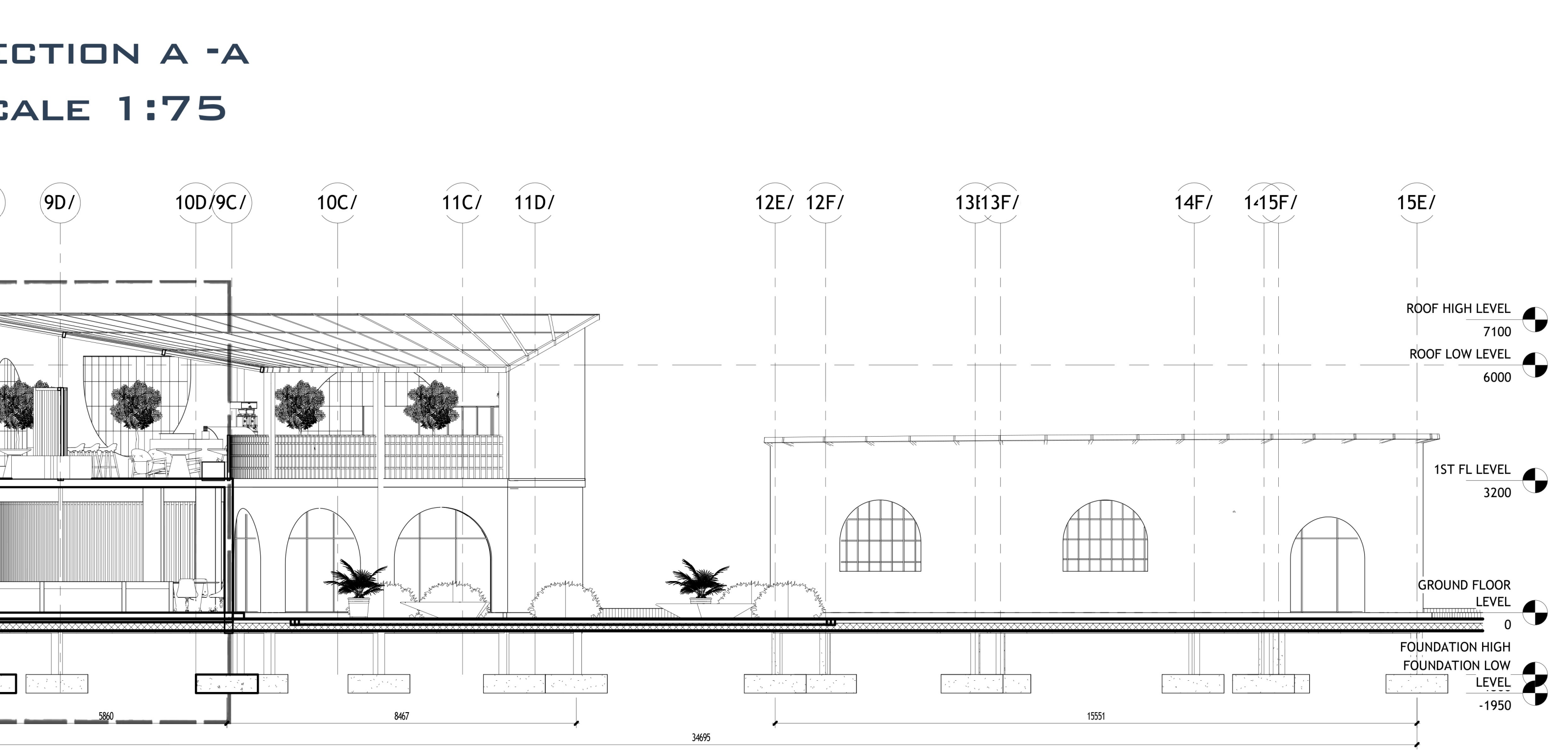
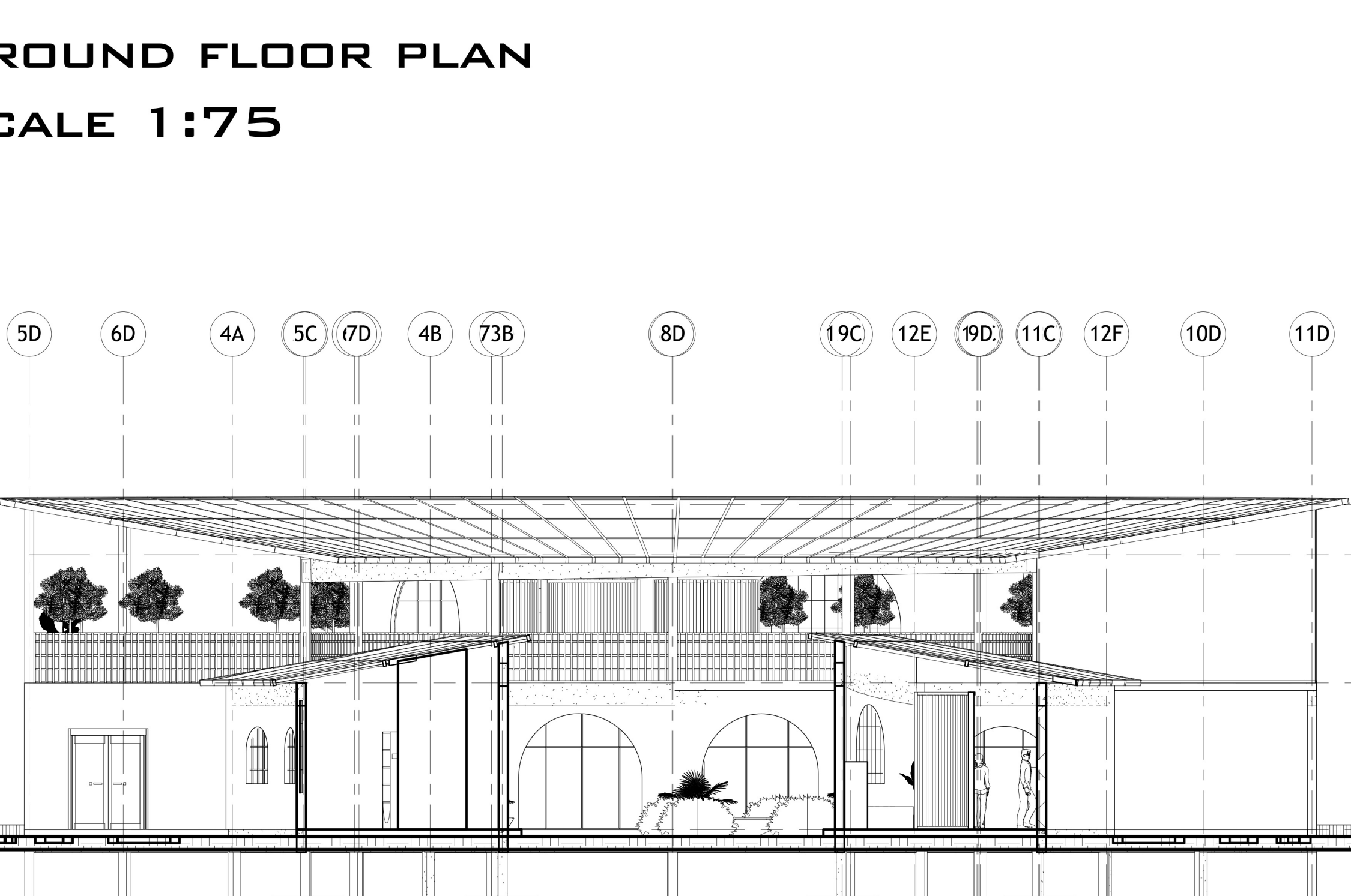
MAEPS IS ONE OF MALAYSIA'S KEY AGRICULTURAL COMPLEXES, COMBINING EXHIBITION, EDUCATION, AND INTERACTIVE AGRICULTURAL EXPERIENCES IN A SINGLE ENVIRONMENT.

SITE & CONTEXT
 LOCATED IN SELANGOR NEAR PUTRAJAYA, MAEPS IS HIGHLY RELEVANT TO THE PROJECT IN TERMS OF:

- CLIMATE CONDITIONS
- SOIL AND LANDSCAPE CONTEXT
- VISITOR PROFILE
- URBAN SURROUNDINGS

ARCHITECTURAL ANALYSIS

- MASTER PLANNING & ZONING**
 - Clear functional zoning of the site
 - Includes exhibition areas, agricultural zones, and service zones
 - Helps organize visitor flow and improve navigation
- CIRCULATION**
 - Well-structured and connected pathways
 - Designed as a sequential experience
 - Each stop naturally leads to the next activity
- OPEN SPACES**
 - Large outdoor areas dedicated to agricultural activities
 - Buildings act as supporting elements rather than dominating forms
- STRUCTURE**
 - Use of lightweight steel structures for large spans
 - Minimizes internal columns to create flexible spaces
- INTERACTIVE FUNCTION**
 - Focus on participation, not just display
 - Encourages learning through experience and hands-on activities



GROUND FLOOR PLAN SCALE 1:75