

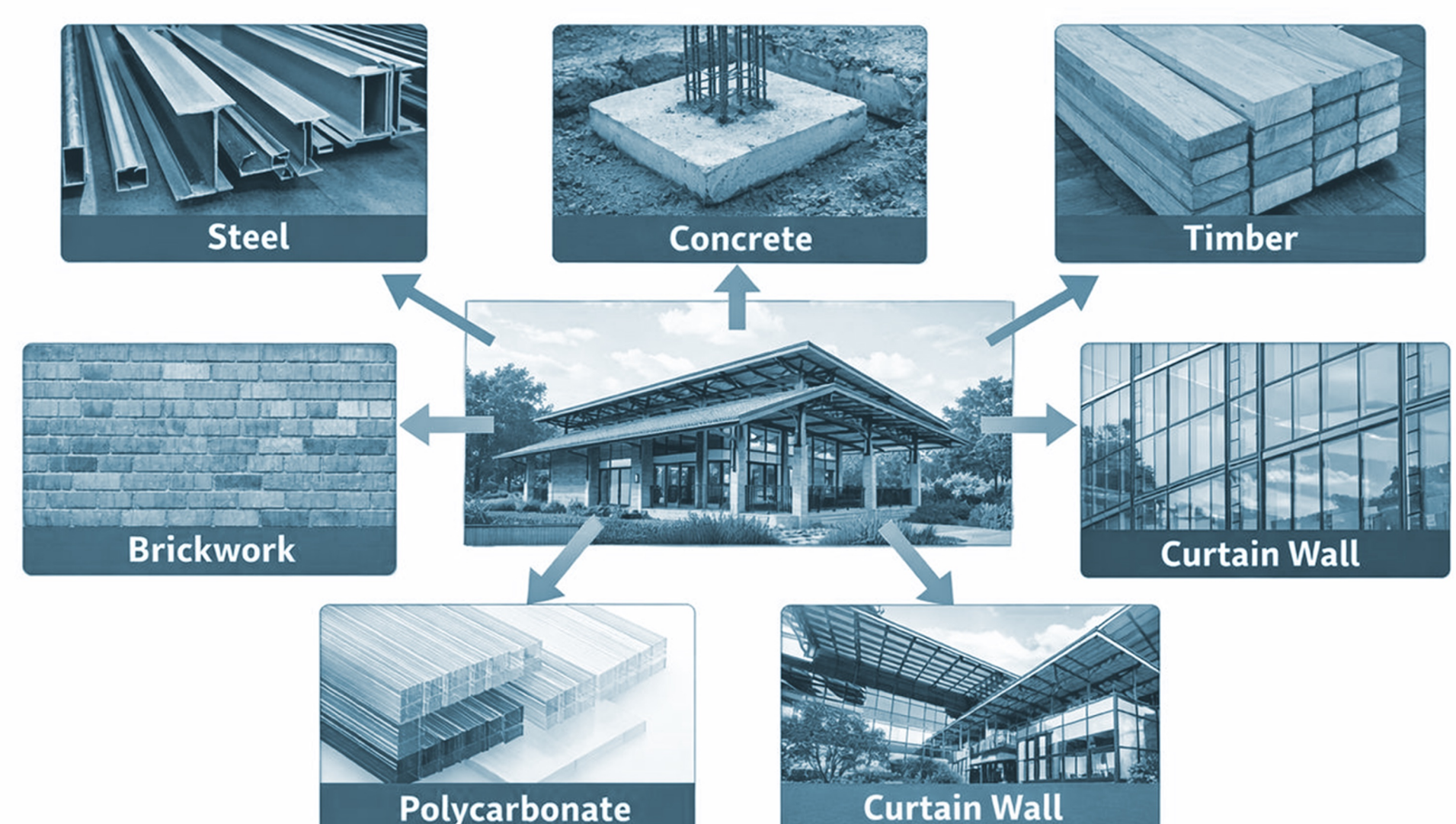
EXPLODED AXONOMETRIC

TECHNICAL RESEARCH & MATERIALS

MATERIALS WERE SELECTED TO SUIT THE PROJECT'S EDUCATIONAL-AGRICULTURAL FUNCTION AND THE TROPICAL CLIMATE:

- CONCRETE: REINFORCED COLUMNS (20X20 CM) WITH ISOLATED FOOTINGS FOR STABLE LOAD DISTRIBUTION.
- STEEL: MILD STEEL ROOF STRUCTURE (ASTM A36) FOR OPEN SPACES, ENSURING STRENGTH AND FLEXIBILITY.
- TIMBER: WOODEN PANELS FOR NATURAL AESTHETIC.
- BRICKWORK: EXTERNAL WALLS FOR DURABILITY AND COST EFFICIENCY.
- POLYCARBONATE PANELS: PROVIDE DAYLIGHT, UV PROTECTION, AND THERMAL INSULATION.
- CURTAIN WALL: ENHANCES NATURAL LIGHT, VENTILATION, AND VISUAL CONNECTION.
- SUSTAINABILITY: MATERIALS CHOSEN TO IMPROVE THERMAL PERFORMANCE AND REDUCE ENERGY USE.

Material Selection

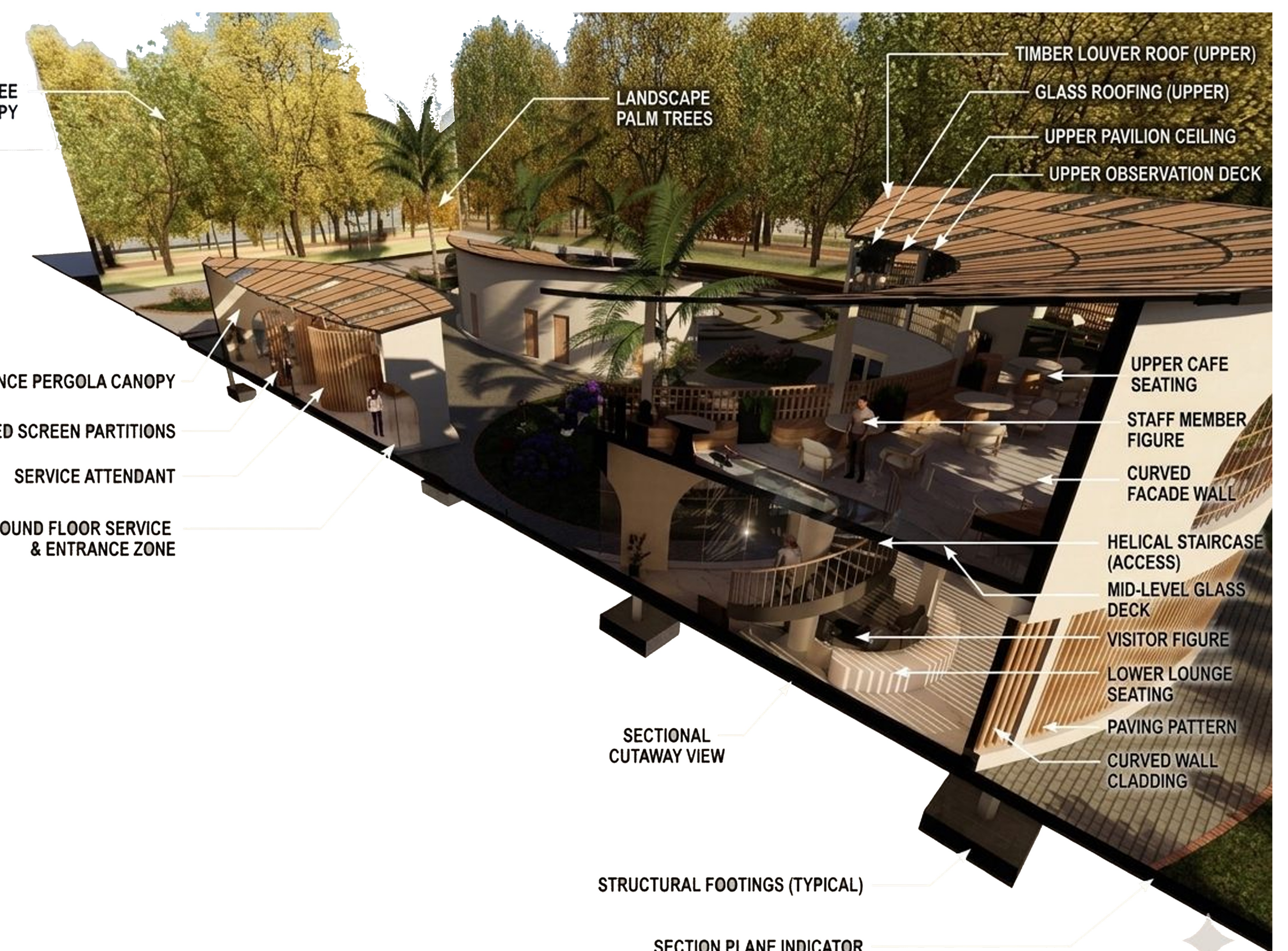
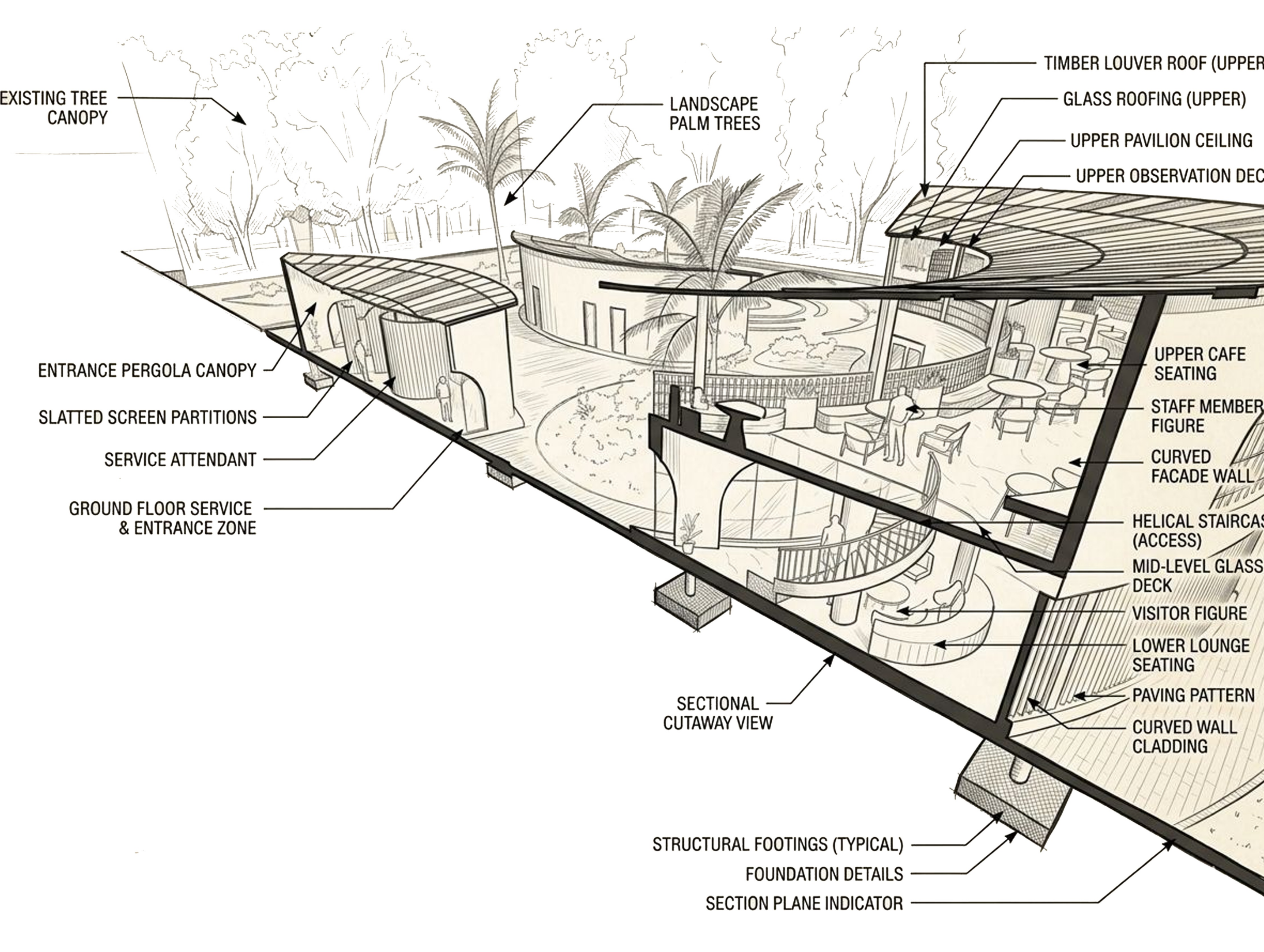


STRUCTURAL STUDIES

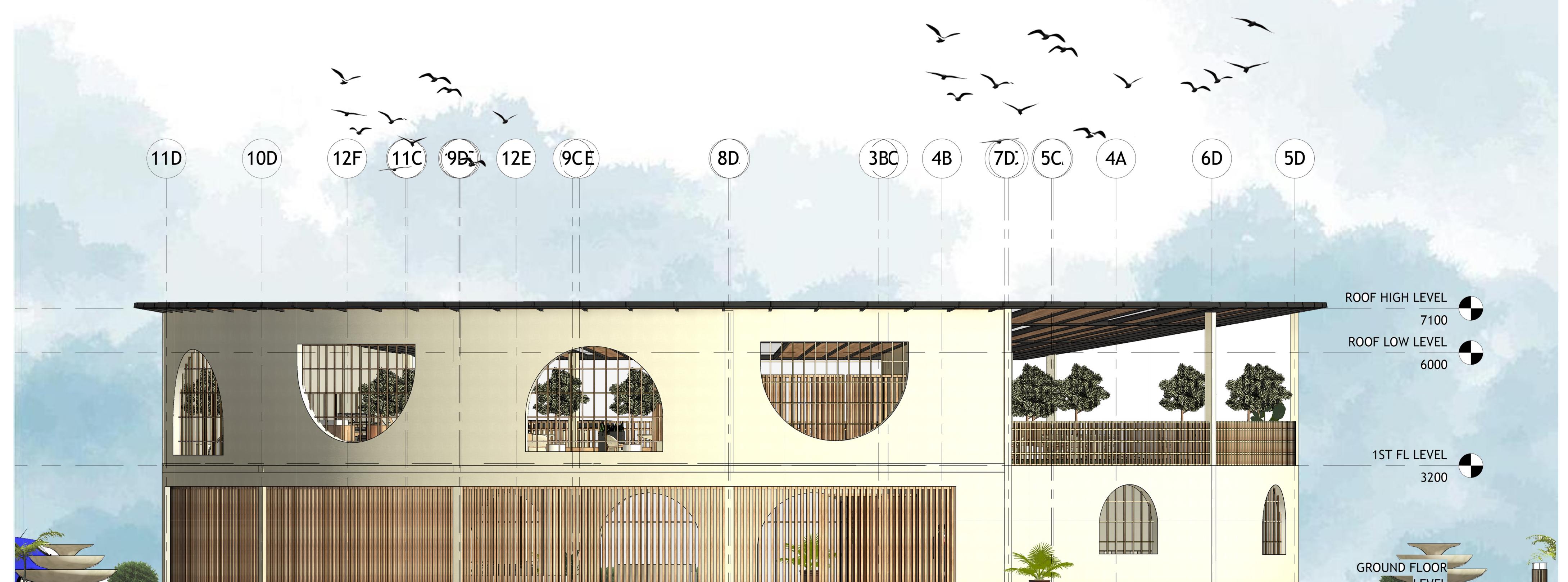
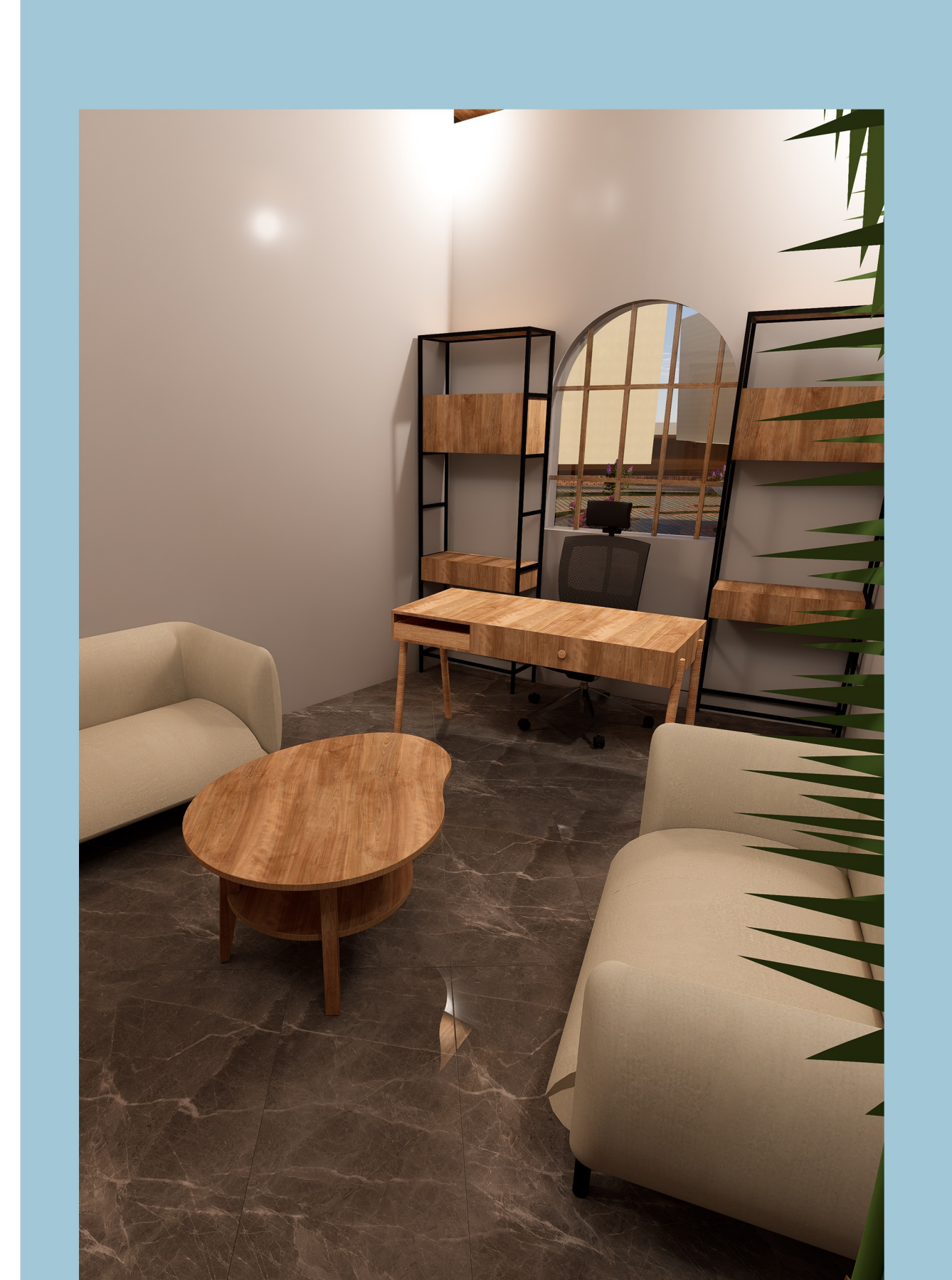
THE BUILDING ADOPTS A REINFORCED CONCRETE FRAME SYSTEM COMBINED WITH A STEEL ROOF STRUCTURE TO ACHIEVE BOTH STABILITY AND FLEXIBILITY. STRUCTURAL LOADS ARE TRANSFERRED FROM THE ROOF TO BEAMS, THEN TO COLUMNS, AND FINALLY TO ISOLATED FOOTINGS.

THE STEEL ROOF SYSTEM IS USED IN LARGE-SPAN SPACES SUCH AS WORKSHOPS AND AGRICULTURAL AREAS, ALLOWING FOR OPEN, COLUMN-FREE LAYOUTS. MEANWHILE, THE CONCRETE STRUCTURE PROVIDES OVERALL RIGIDITY, DURABILITY, AND RESISTANCE TO ENVIRONMENTAL CONDITIONS.

THIS HYBRID SYSTEM RESPONDS EFFICIENTLY TO THE PROJECT'S FUNCTIONAL NEEDS AND THE TROPICAL CLIMATE, ENSURING STRUCTURAL PERFORMANCE AND SPATIAL FLEXIBILITY.



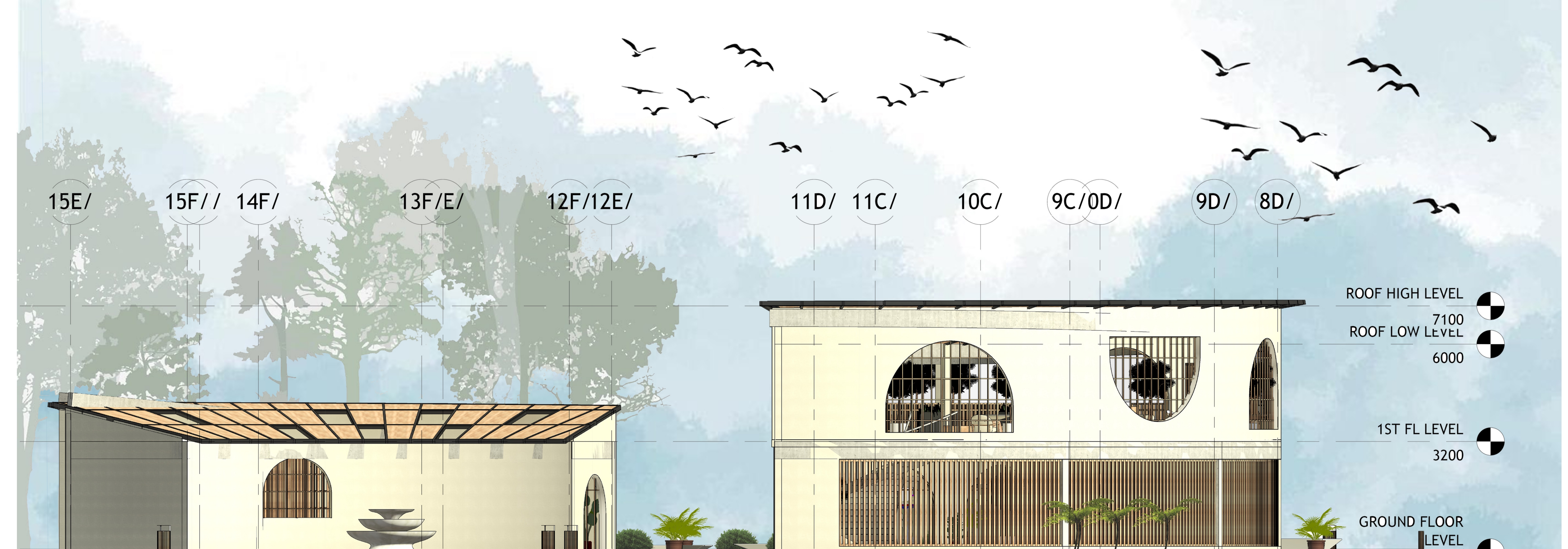
SECTIONAL PERSPECTIVE



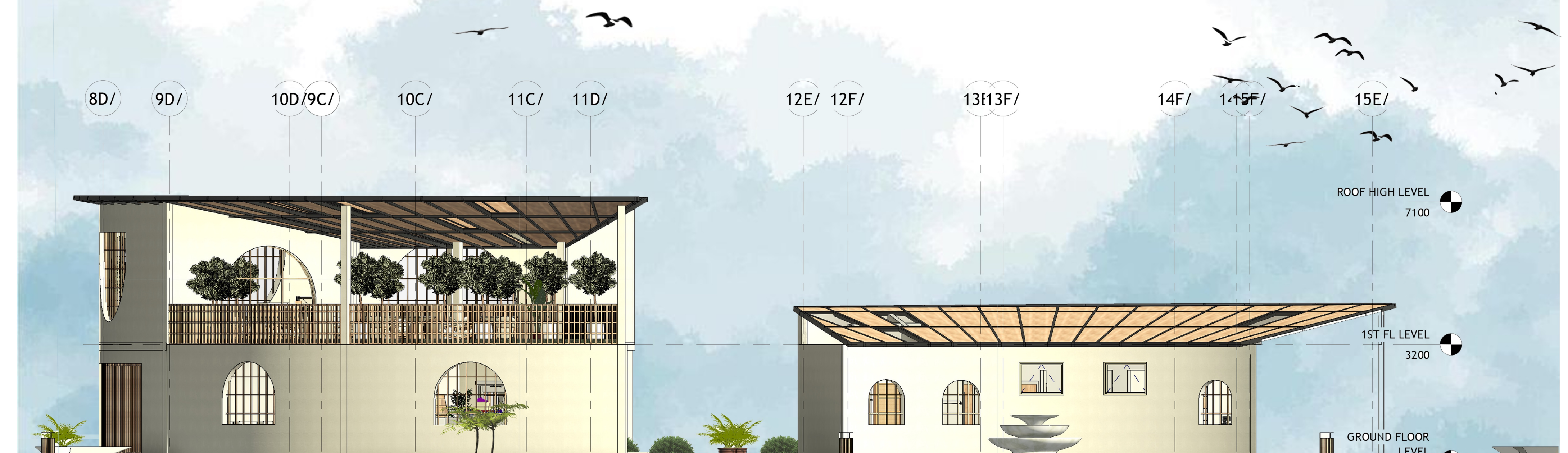
NORTH ELEVATION SCALE 1:75



SOUTH ELEVATION SCALE 1:75



EAST ELEVATION SCALE 1:75



WEST ELEVATION SCALE 1:75