

DESIGN PROPOSAL

A CONTEMPORARY CERAMIC GALLERY AND WORKSHOP



SATINDER KHERA
100700662

DESIGN VISION

The design seeks to dissolve the boundary between workshop and gallery, allowing visitors to experience the craft as a living process rather than a finished product. The ground floor welcomes the public through a café and retail space, creating an active social interface, while the upper-level workshop and kiln room reveal the artistry and craftsmanship behind every piece.

The objective was to create a place where visitors could not only purchase ceramics, but also experience the making process itself.



INSPIRATION

Layers of clay and silt, formed by time, water and pressure.
Rich in texture, colour and organic movement.

the essence of the Silt House...



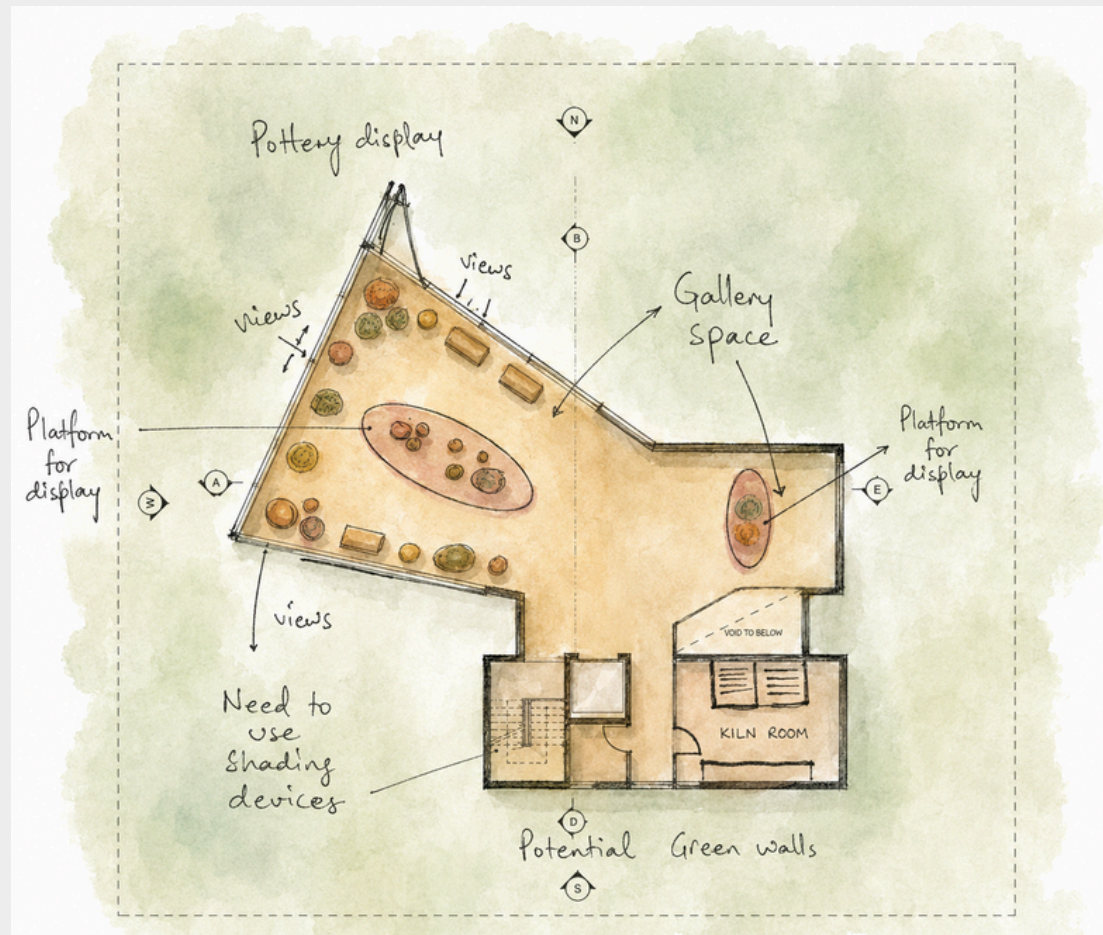
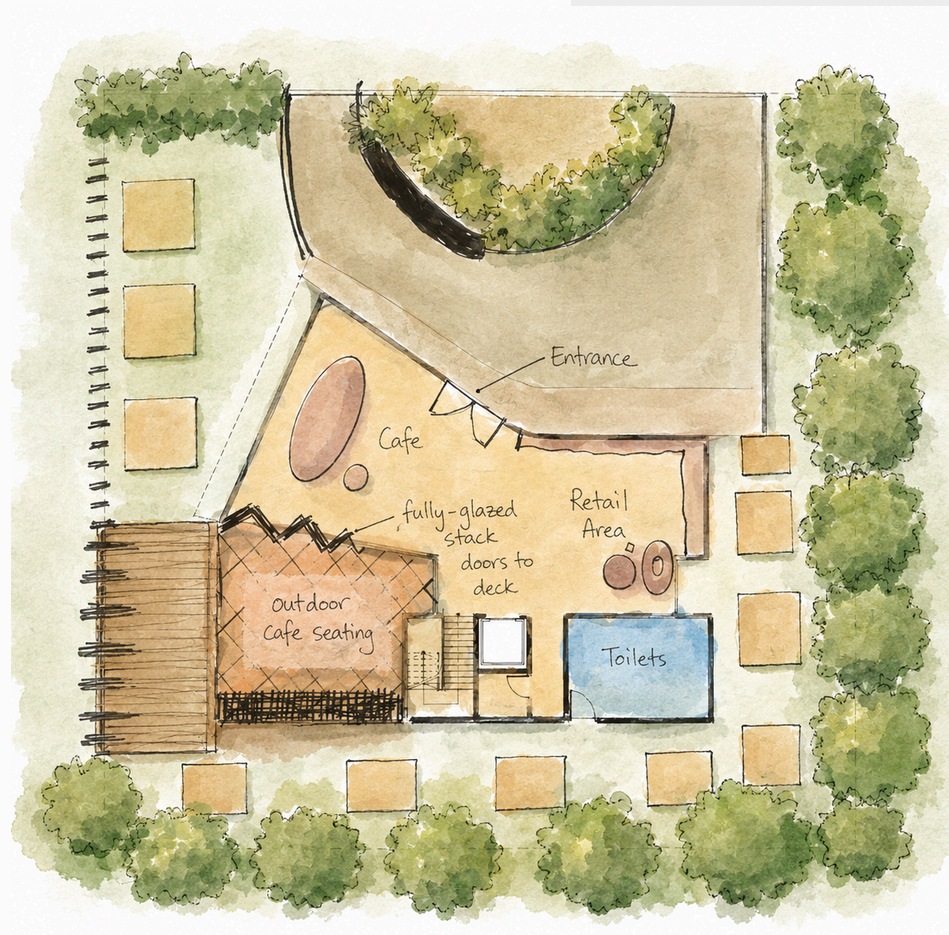
CONCEPT DEVELOPMENT

A central journey, where visitors move through gallery, retail, café, and workshop spaces as a continuous experience.

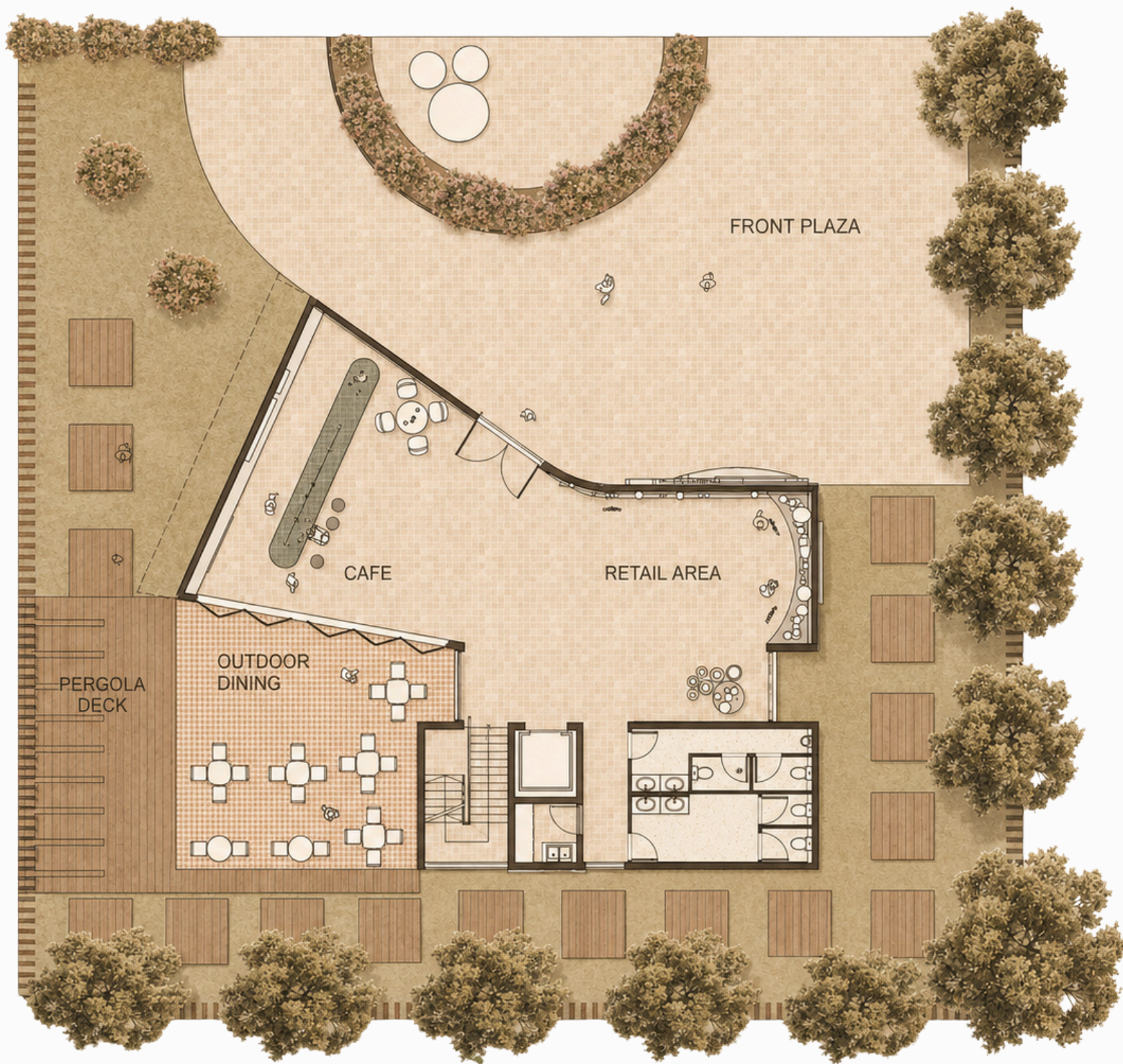
Layered solid forms, reflecting the natural deposition of silt and clay.

A lightweight screened volume, creating a visual contrast between mass and transparency.





SPATIAL PLANNING



Ground Floor

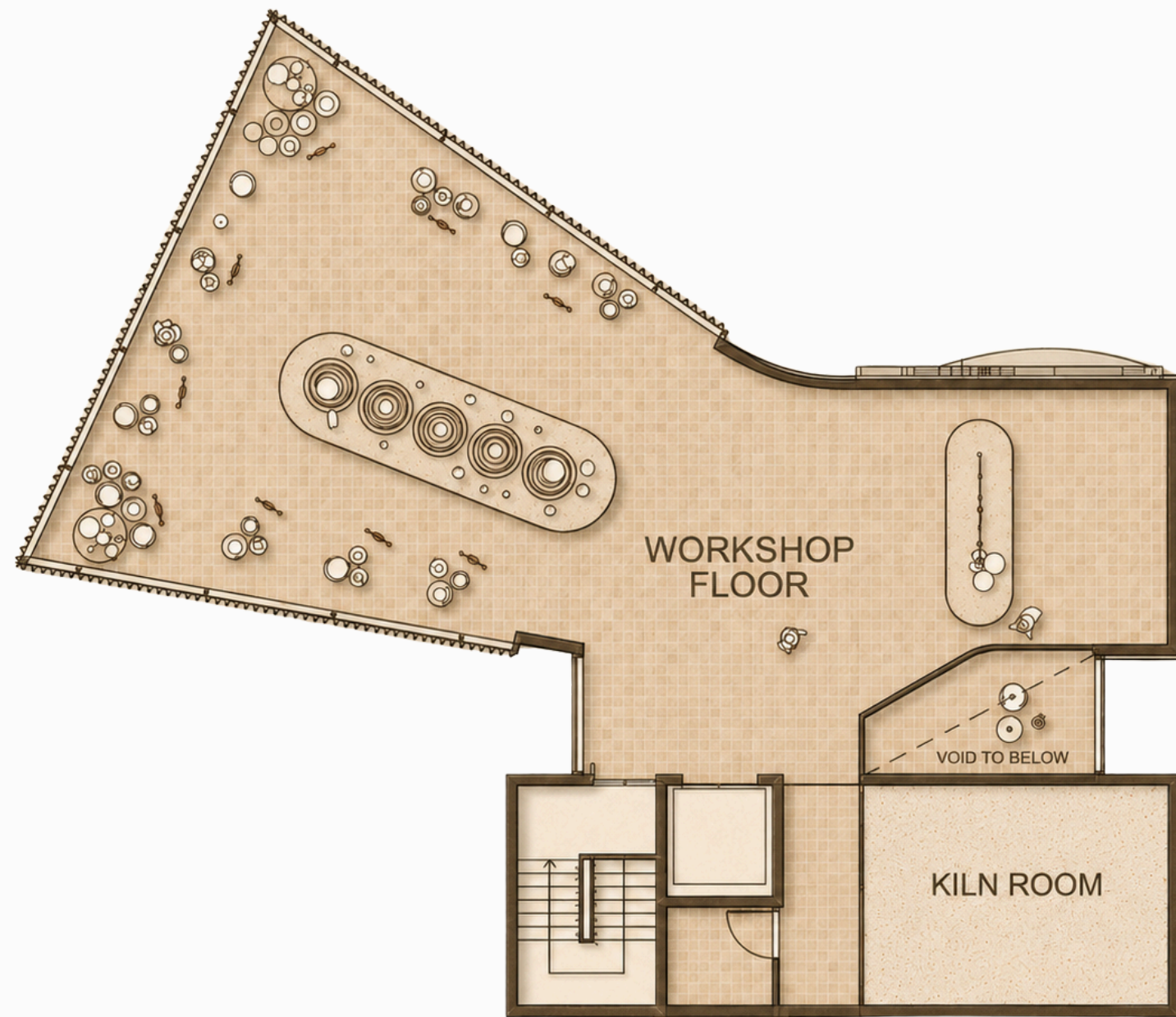
The ground floor has been planned as the public heart of The Silt House, creating an open and inviting environment that encourages exploration and social interaction. Visitors arrive through the landscaped front plaza before naturally flowing into the gallery retail space and café, where the boundaries between exhibition, hospitality, and public gathering are intentionally blurred. The triangular geometry of the building has been used to establish a dynamic circulation path, allowing occupants to move freely between indoor and outdoor spaces while maintaining clear visual connections throughout the site. The café extends onto the pergola deck and outdoor dining area, activating the surrounding landscape and creating opportunities for informal gathering.

Supporting amenities, including the lift, stair core, and accessible facilities, are positioned centrally to maximise efficiency and ensure intuitive wayfinding. This arrangement allows the upper-level workshop and kiln facilities to operate independently while remaining connected to the visitor experience below.

Key Design Principles

- Clear and intuitive visitor circulation.
- Strong connection between interior and exterior spaces.
- Flexible gathering and exhibition areas.
- Centralised services for efficient building operation.
- A welcoming public realm that encourages community engagement and discovery.

SPATIAL PLANNING



First Floor

The first floor has been conceived as the creative heart of The Silt House, a flexible workshop environment where visitors move beyond observation and become active participants in the ceramic-making process. Positioned above the public gallery and café, the space provides a quieter and more immersive atmosphere while maintaining a visual connection to the activities below through the central void.

The open-plan workshop accommodates a range of educational and community activities, with generous worktables allowing for individual practice, group classes, and collaborative making. The irregular geometry of the floor plate encourages movement and discovery, creating a sequence of spaces that feel organic rather than rigidly defined.

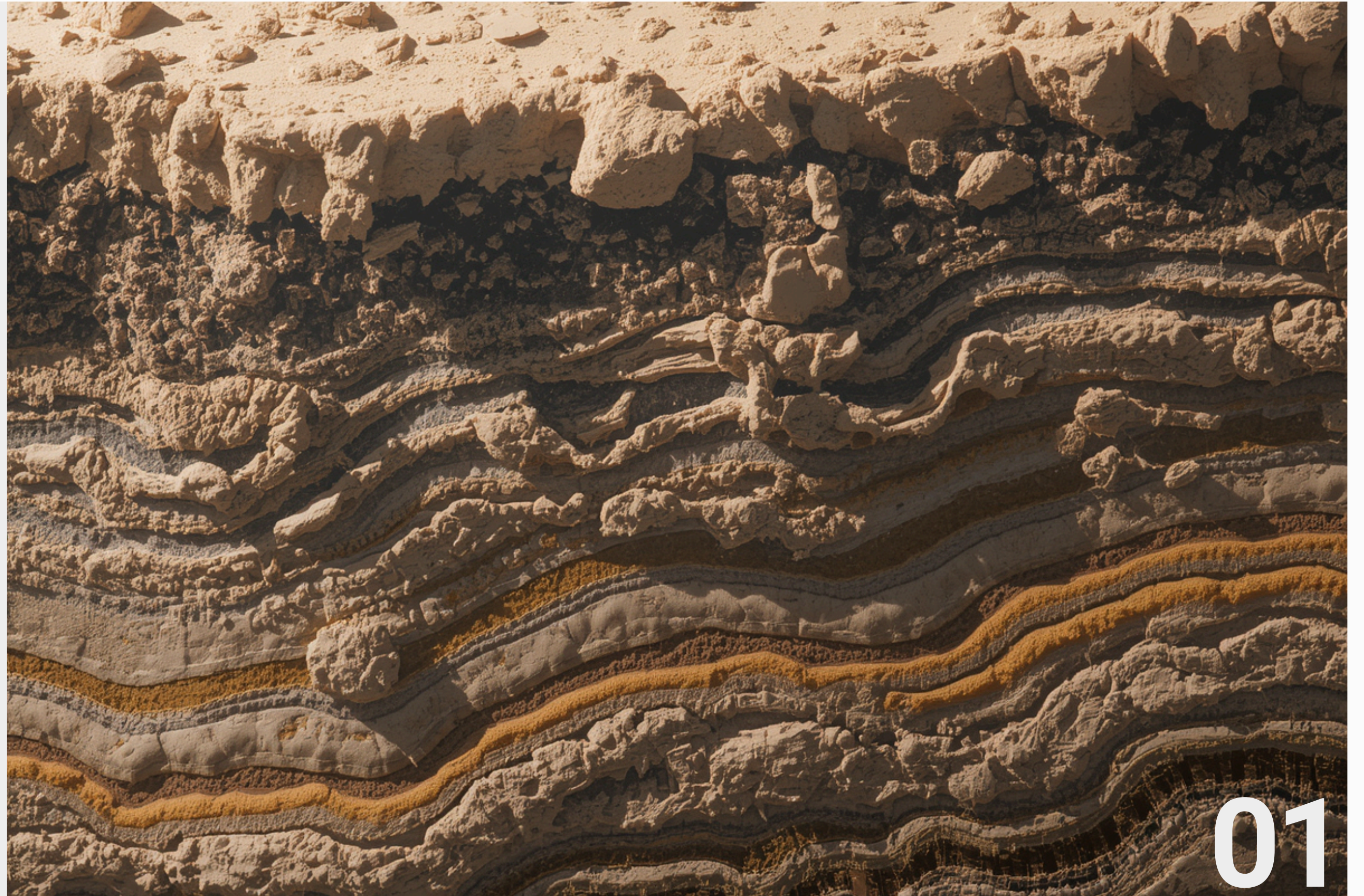
A dedicated kiln room is separated from the main workshop to ensure operational safety while supporting the complete lifecycle of ceramic production, from forming and glazing through to firing and exhibition. Together, these spaces transform the building from a gallery into a living creative hub, where making becomes part of the visitor experience.

Key Design Principles

- Celebration of the craft and making process.
- Open and adaptable learning environment.
- Visual connection between public and creative spaces.
- Safe separation of workshop and kiln operations.
- Flexible layout supporting exhibitions, demonstrations, and community classes.

MATERIAL

The material palette has been carefully selected to reflect the project's connection to the natural landscape. Earth-toned finishes, textured surfaces and warm timber elements work together to create a sense of cohesion, warmth and authenticity. The combination of contrasting textures and natural materials enhances the building's tactile quality while reinforcing the design concept of layered sediment and crafted forms.



01



FACADE

The façade brings together textured plaster, burnt clay accents and vertical timber screening to create a cohesive architectural language inspired by the movement and layering of silt. The sculpted plaster forms represent natural sediment deposits, while the darker clay elements provide depth and contrast. Timber screening introduces warmth, rhythm and filtered light, softening the building's presence and reinforcing its connection to natural materials and crafted forms.

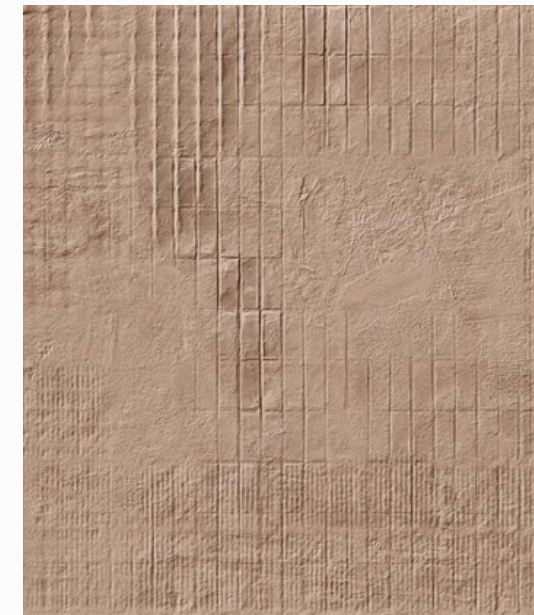
I

Renaissance Plaster was selected for its warm yellow-clay tone and hand-applied texture, reflecting the layered qualities of silt, clay and sediment. Its earthy finish gives the façade depth, softness and a crafted character that supports the project's material concept.



II

Used as an accent material, the burnt clay finish provides depth, texture and visual contrast against the softer rendered plaster surfaces. Its earthy tones reference fired clay and sediment, reinforcing the project's connection to the natural landscape.



III

The natural stone mosaic tiles introduce texture, warmth and a handcrafted quality to floor spaces. Their varied tones and irregular edges reflect the project's inspiration from erosion and natural earth formations, while providing a durable and timeless finish.



Lorem ipsum dolor sit amet, consectetur adipiscing elit. Donec vitae elit sed est dapibus mattis est nisi arcu mauris diam. Vel luctus tristique, massa ligula pulvinar sapien, vitae imperdiet nibh risus sit amet erat. Donec rutrum faucibus venenatis.



I

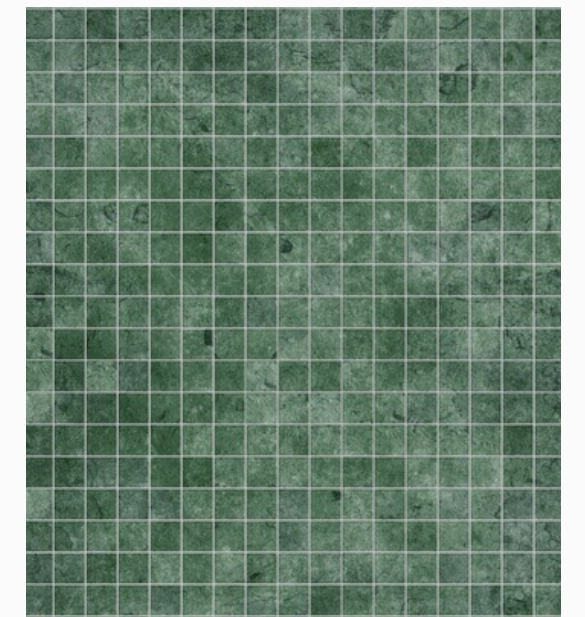
Renaissance Plaster was selected for its warm yellow-clay tone and hand-applied texture, reflecting the layered qualities of silt, clay and sediment. Its earthy finish gives the façade depth, softness and a crafted character that supports the project's material concept.

II

Used as an accent material, the burnt clay finish provides depth, texture and visual contrast against the softer rendered plaster surfaces. Its earthy tones reference fired clay and sediment, reinforcing the project's connection to the natural landscape.

III

The natural stone mosaic tiles introduce texture, warmth and a handcrafted quality to floor spaces. Their varied tones and irregular edges reflect the project's inspiration from, erosion and natural earth formations, while providing a durable and timeless finish.



INTERIORS

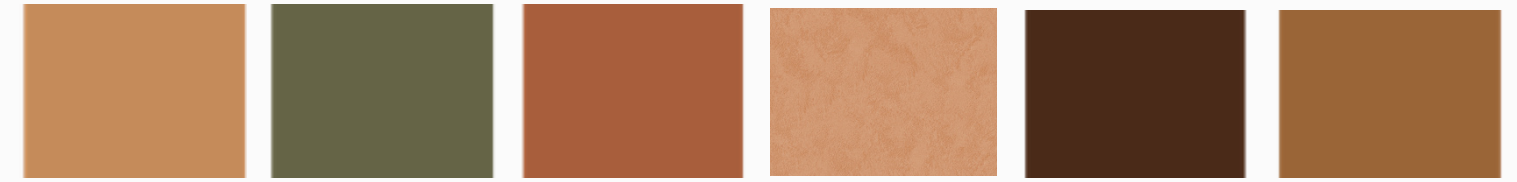
The interior palette draws from the colours and textures of clay, earth and natural minerals. Warm clay-toned plaster wraps the walls and ceilings, creating a soft, immersive backdrop. Terrazzo flooring with terracotta aggregates introduces texture and durability while echoing the fragmented nature of silt and clay deposits. Deep green tiled finishes are used to highlight the café and bar areas, providing a subtle contrast that references natural vegetation and brings richness and vibrancy to the space.

Lorem ipsum dolor sit amet, consectetur adipiscing elit. Donec vitae elit sed est dapibus mattis est nisi arcu mauris diam. Vel luctus tristique, massa ligula pulvinar sapien, vitae imperdiet nibh risus sit amet erat. Donec rutrum faucibus venenatis.





COLOUR PALLETE



The colour palette is inspired by warm, natural tones and has been selected to create a welcoming and comfortable atmosphere. Soft clay hues form the primary palette, providing warmth and cohesion throughout the project, while deeper accent colours add contrast, depth and visual interest..



The Glaze Bar



DESIGN RESOLUTION

The Silt House brings together materiality, form and function to create a distinctive and welcoming destination. Through its carefully considered palette, tactile finishes and cohesive architectural language, the design delivers a memorable experience for visitors while providing practical, flexible spaces for making, learning and gathering. The result is a timeless and engaging environment that celebrates craftsmanship, community and the enduring beauty of natural materials.



INSPIRED BY PROCESS, CRAFTED FOR PEOPLE

