

Project Title: The Thorn and the Carnation

Resilient Thresholds: Weaving Healing into the Scars of Land

(Resistance - Resilience - Roots - Simplicity - Identity - Healing)

STORY TO TELL :

"In Khiam, South Lebanon, the People of the Land lived simple, connected lives, rooted in their identity and traditions. Even after occupation, imprisonment, and hardship, they remained, holding onto their roots and weaving resilience and resistance through their crafts.

Today, 'Thorns & Cloves' continues this legacy: a center for healing, empowerment, and remembering. Through craft, the community reconnects with the land, honors memory, and transforms pain into strength.

سنحي بقهرنا المدفون هذه الأرض

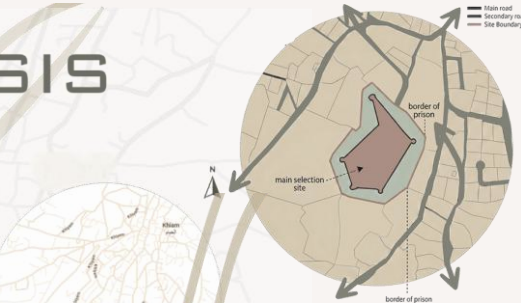
10,452 km

الخيام ترحب بكم
Welcome to Alkhyam
بلدية الخيام



SITE ANALYSIS

SITE ALOCATION



S W O T

STRENGTHS

- Historic value: Strong symbolic and emotional identity
- Central location: Easy access for the local community
- Real need: Lacks cultural & educational facilities in South Lebanon

WEAKNESSES

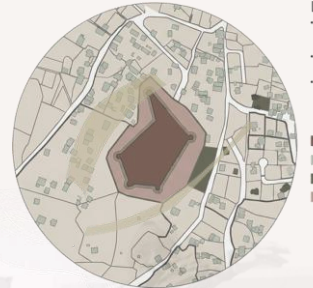
- Security sensitivity: May restrict design and access
- Weak infrastructure: Requires utility and service upgrades
- Emotional weight: Traumatic history may affect acceptance

OPPORTUNITIES

- Cultural decentralization: Brings culture beyond major cities
- Social empowerment: Training for youth and women
- Tourism & education: Attracts visitors, researchers, NGOs
- Heritage revival: Preserves local crafts and traditions

THREATS

- Regional instability: May disrupt construction and use
- Economic crisis: Funding and operation risks
- Public skepticism: Resistance to changing a memorial site
- Maintenance risk: Needs sustainable long-term management



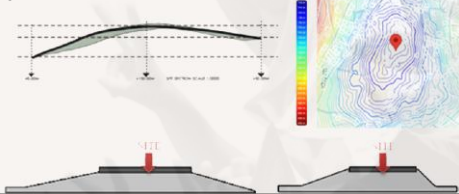
Real estate ownership:

رقم القطعة	مساحة القطعة (م ²)	اسم المالك	رقم القطعة	مساحة القطعة (م ²)
2400	2400	محمد سمير صالح	4028	4028
2401	2400	عزينة الجعوبه النابيه	4030	4030
2402	2400	عزينة الجعوبه النابيه	4031	4031
2403	2400	فاطمة عبده فهد	4032	4032

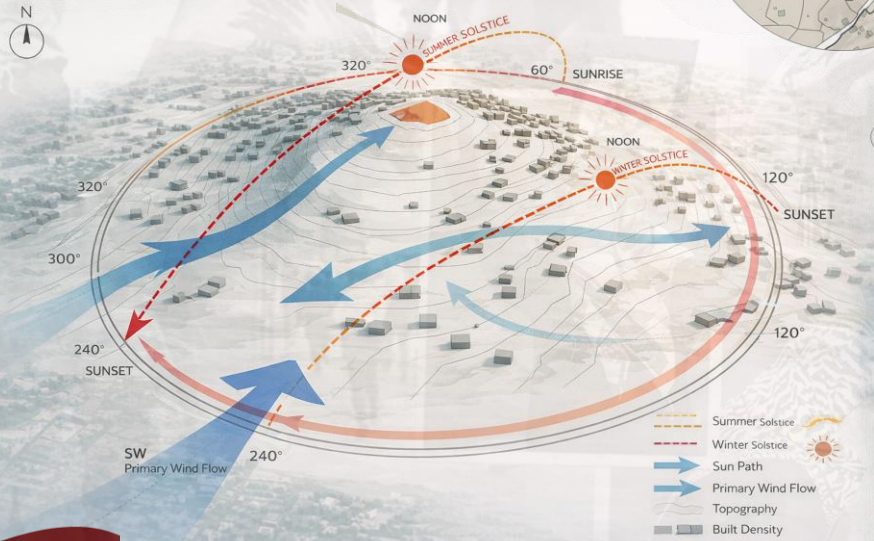
LAND USE

- Surrounding area is predominantly rural: small houses, open fields, scattered community buildings.
- Built structures are low-rise and dispersed: giving a soft, open landscape character.
- The former detention center stands out as a larger, more defined site, highlighting its prominence and potential as a new cultural landmark.

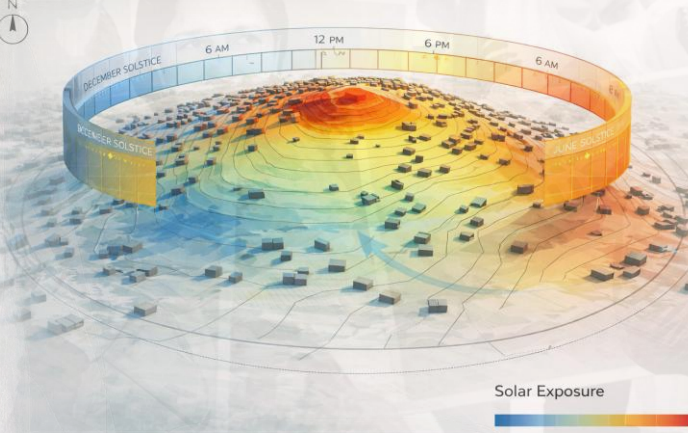
Khayam lies on a gently sloping hillside with open views toward the valley. The site's contour variations create strong visual connections, primarily toward the eastern town edge and the surrounding Istaan landscape.



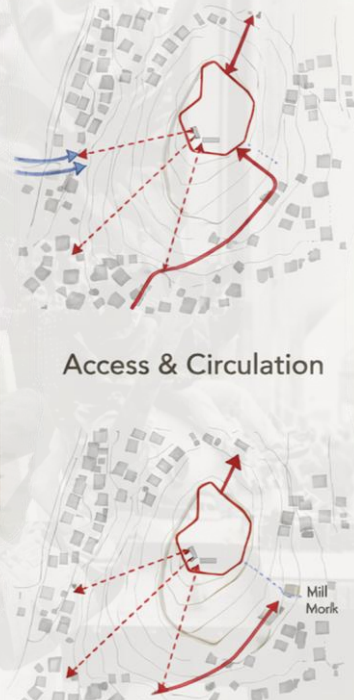
ENVIRONMENTAL ANALYSIS



SOLAR SIMULATION ANALYSIS



Access & Circulation



Historical background

Converted into a detention center during the Israeli occupation of South Lebanon

The detention center was liberated and recognized as a symbol of resilience and memory.

1985

2000



Built by the French Mandate as a military barracks.

The site became notorious for human rights violations, symbolizing trauma in southern Lebanon.

During the July War, the Israeli air force bombed and destroyed the site, erasing much of the physical structure but not its symbolic weight.

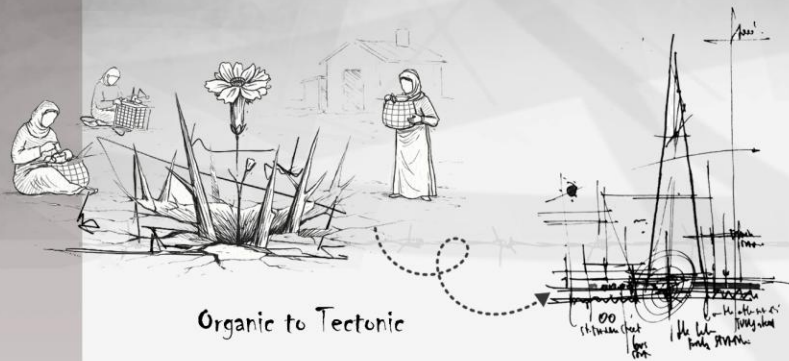
1930

1985 - 2000

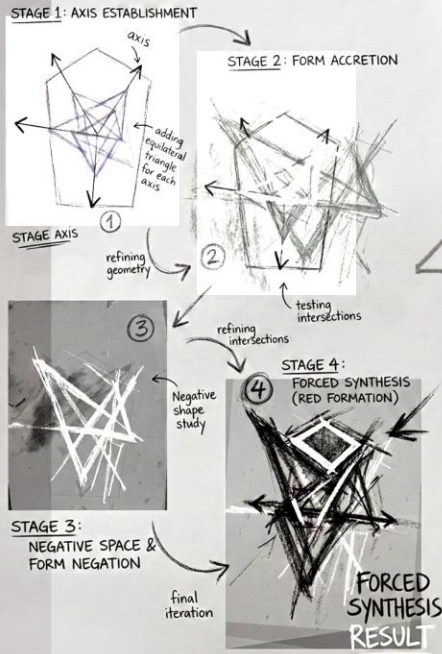
2006



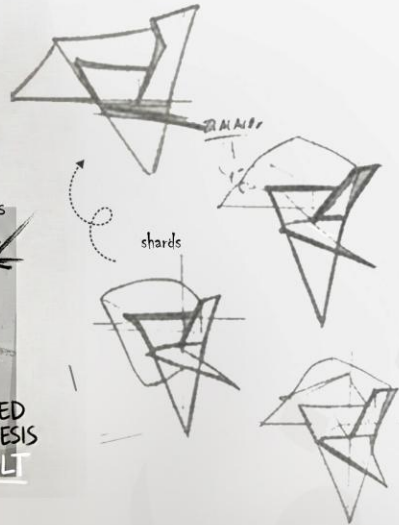
CONCEPT DEVELOPMENT



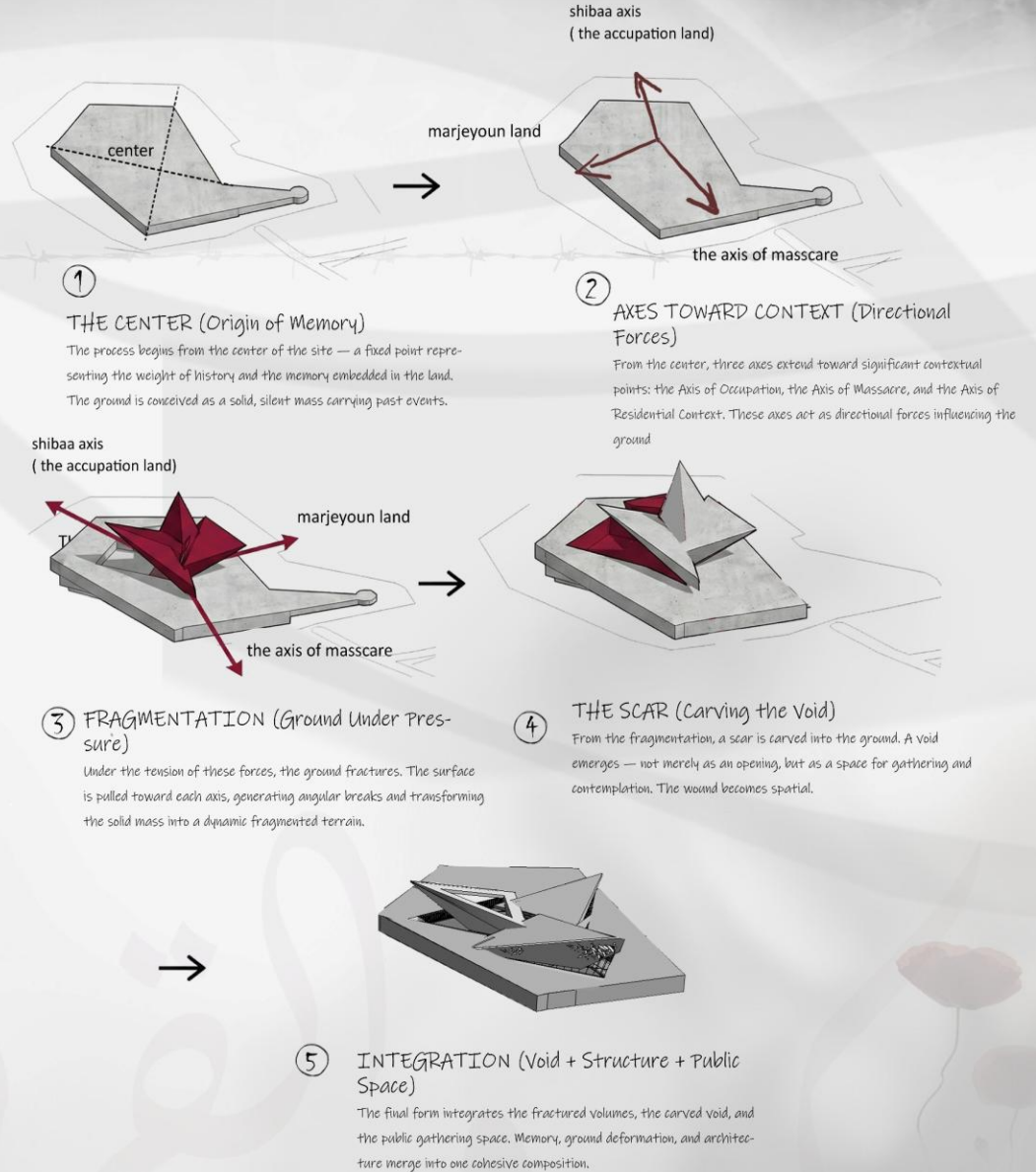
FORM GENERATION DIAGRAM



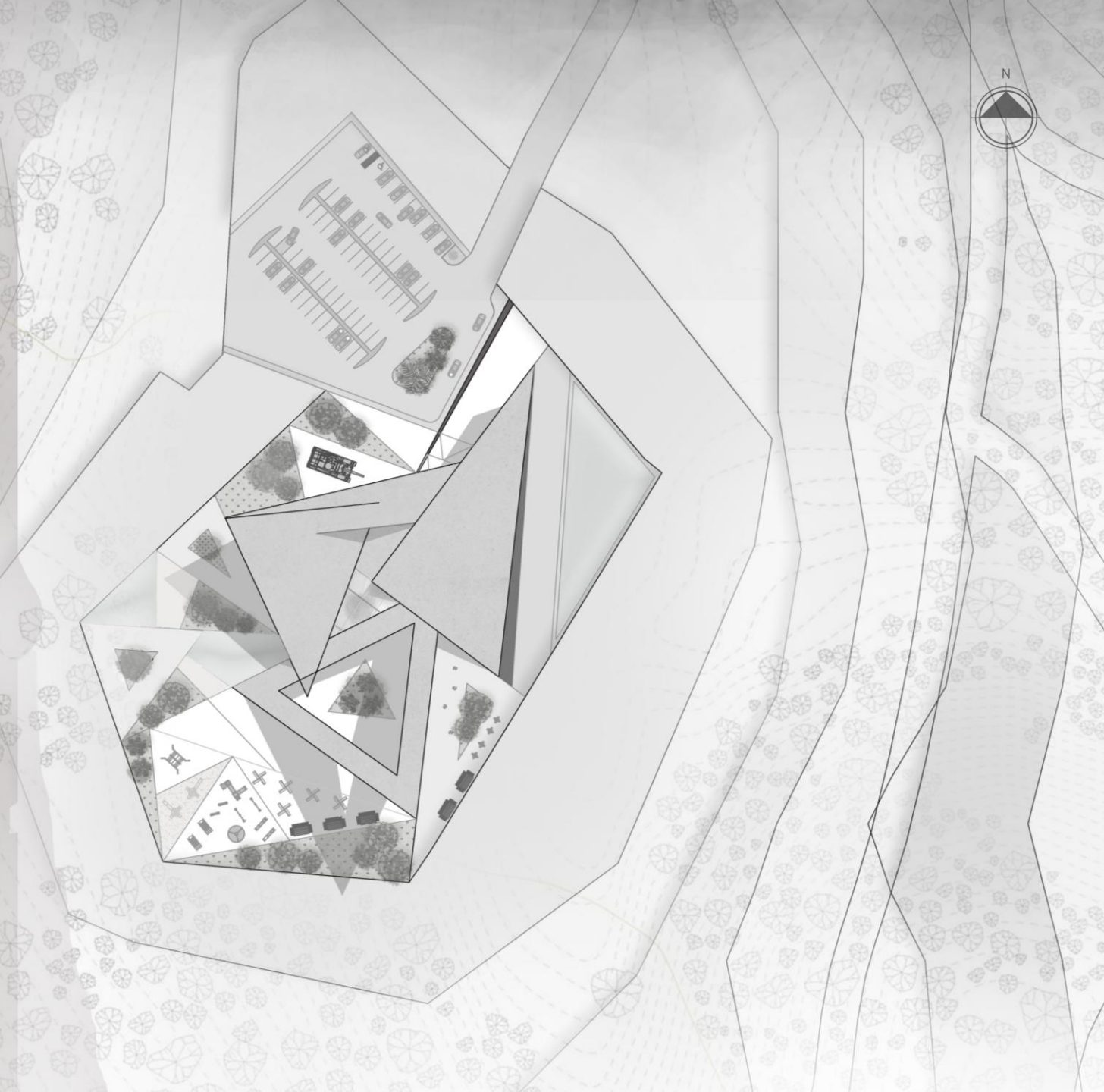
Verticality & Growth



FORM GENERATION



أنتظن أنك عندما أخرجتني
وقعدت كالأشجار في فاتي
وخرجت من بيتي في ربي
عجبت من ما فعلت لي في
أنا كالقيامة
ذات يوم ربي
أنا كالقيامة ذات يوم أت



LAYOUT
SCALE 1/800

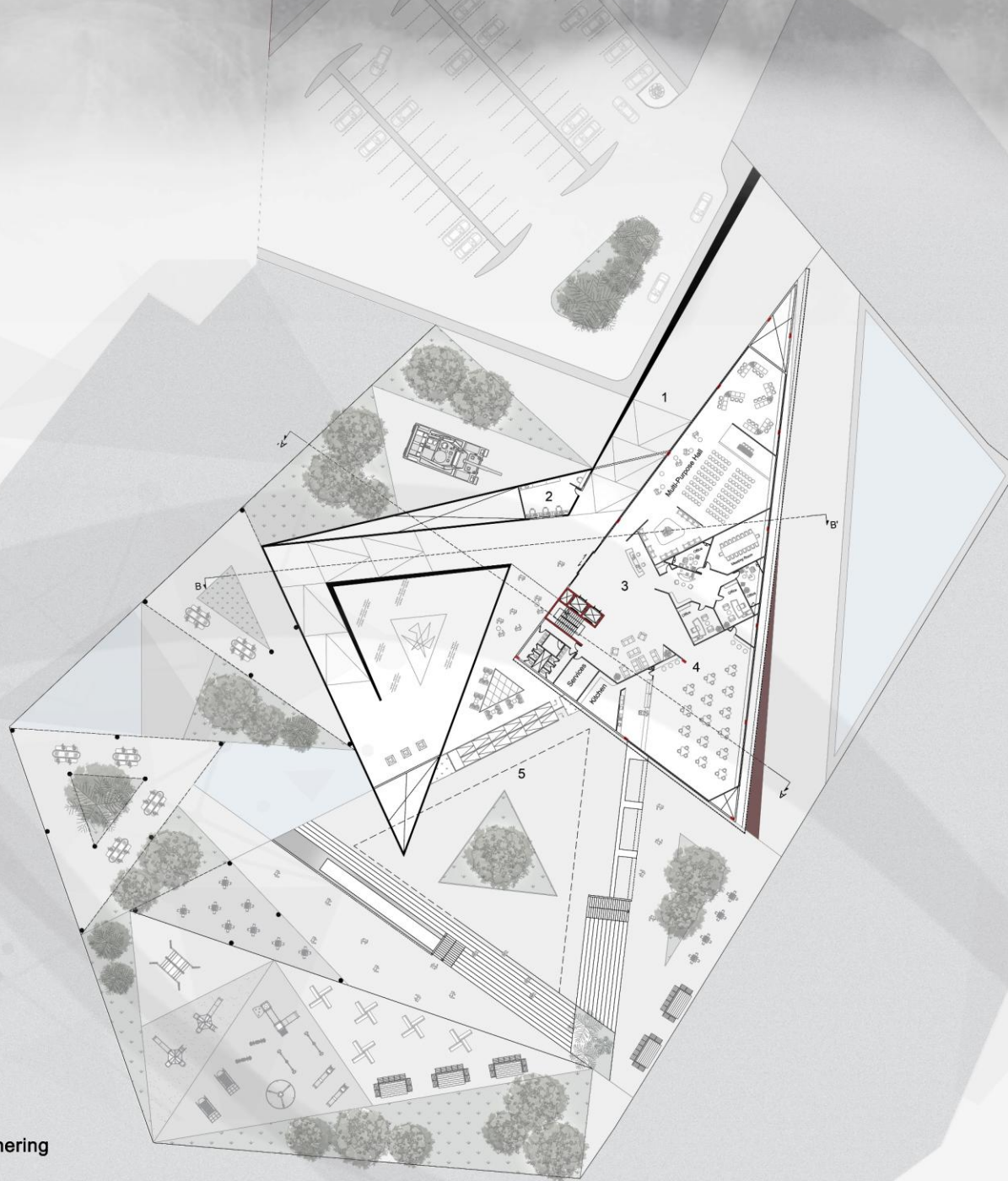


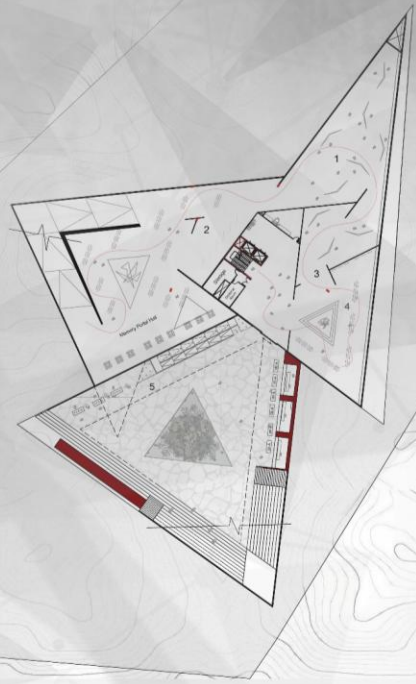
P
L
A
N
S



GROUND FLOOR
SCALE 1/250

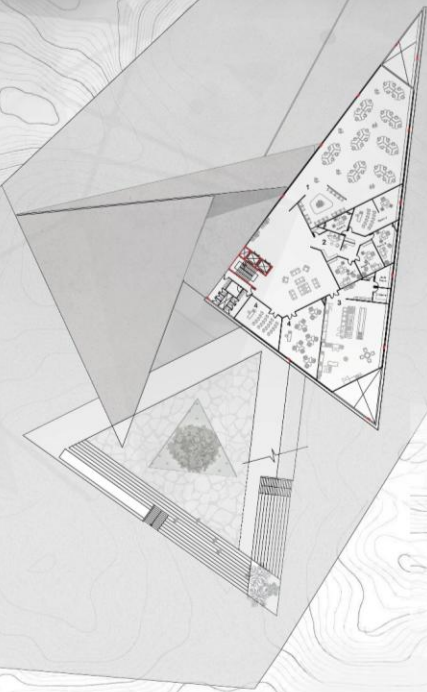
- 1-entrance
- 2-Ticketing & security
- 3-Administration
- 4-Multi-Purpose Hall
- 5-Cafeteria & social lounge
- 6-Kitchen
- 7-Services
- 8-Outdoor Exhibition & Cultural Gathering





BASEMENT FLOOR
SCALE 1/400

- 1-Exhibition
- 2-Memory Portal Hall
- 3-Silent Room
- 4-Media Immersion
- 5-Outdoor Exhibition & Cultural Gathering
- 6-Local Handcrafts



FIRST FLOOR PLAN
SCALE 1/400

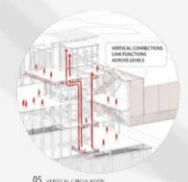
- 1-Entrepreneurs Hub
- 2-Counseling Offices
- 3-Community Kitchen
- 4-class



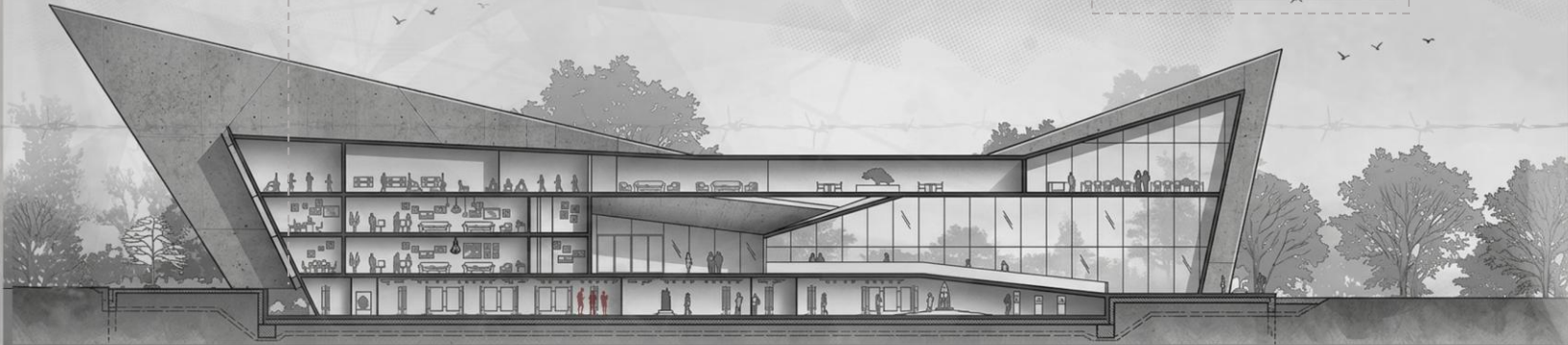
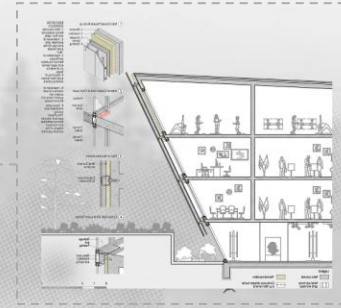
SECOND FLOOR PLAN
SCALE 1/400

- 1-Digital Lab
- 2-Sensory room
- 3-Fine Art & Painting Lab
- 4-Yoga Studio
- 5-Innovation Lab
- 6-Textile Lab
- 7-Sculpture Lab

STUDEIS



S
E
C
T
I
O
N
S



SECTION B'B
SCALE 1/250



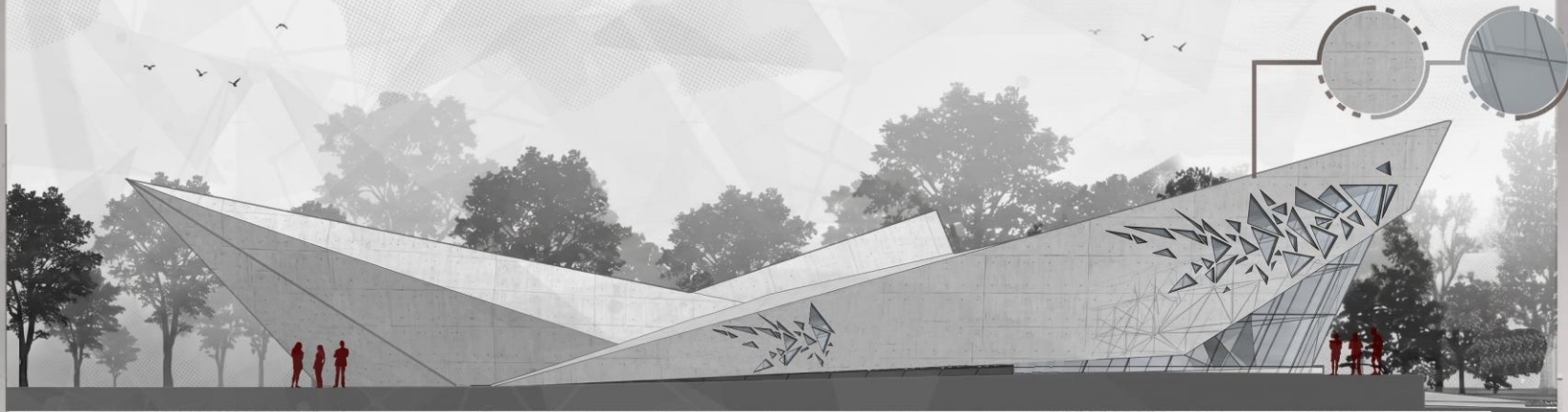
SECTION A'A
SCALE 1/250



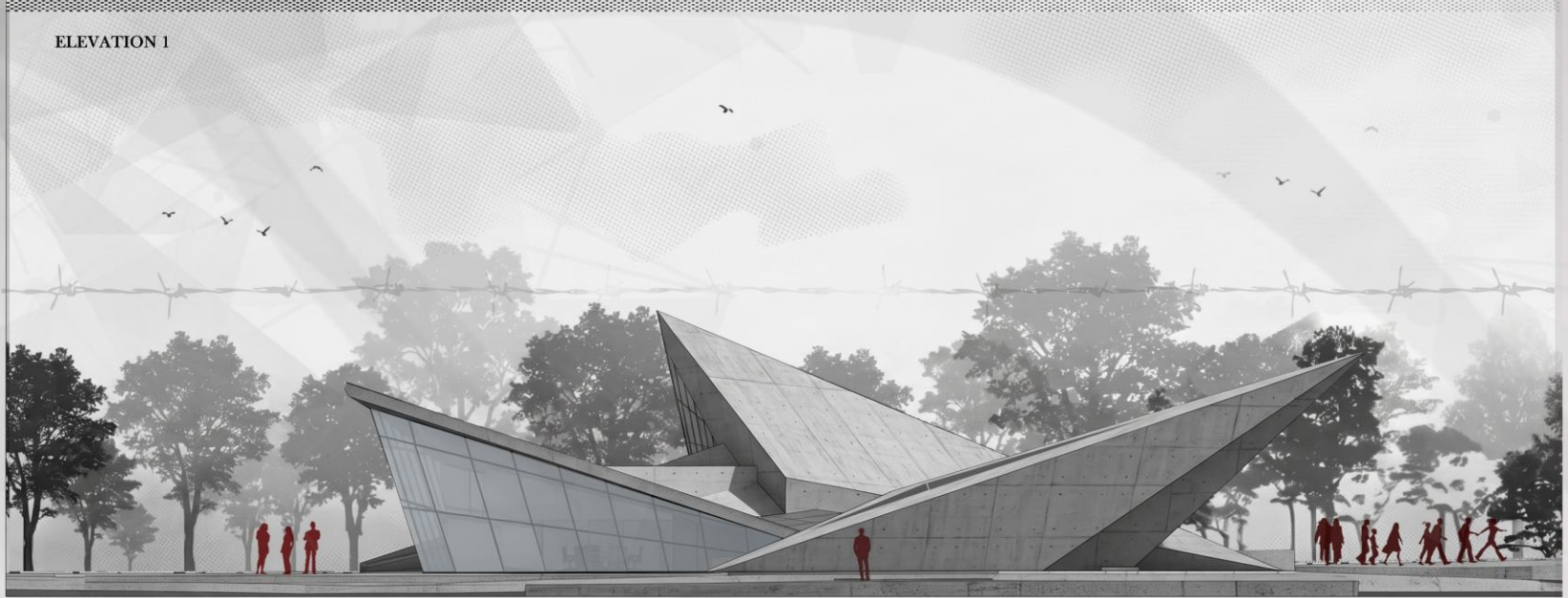


The Concrete (The Thorn): Represents the weight of memory, the raw scars of the site, and unyielding resilience
The Glass (The Carnation): Represents transparency, healing, and the light of hope piercing through the dark trauma

E
L
E
V
A
T
I
O
N



ELEVATION 1

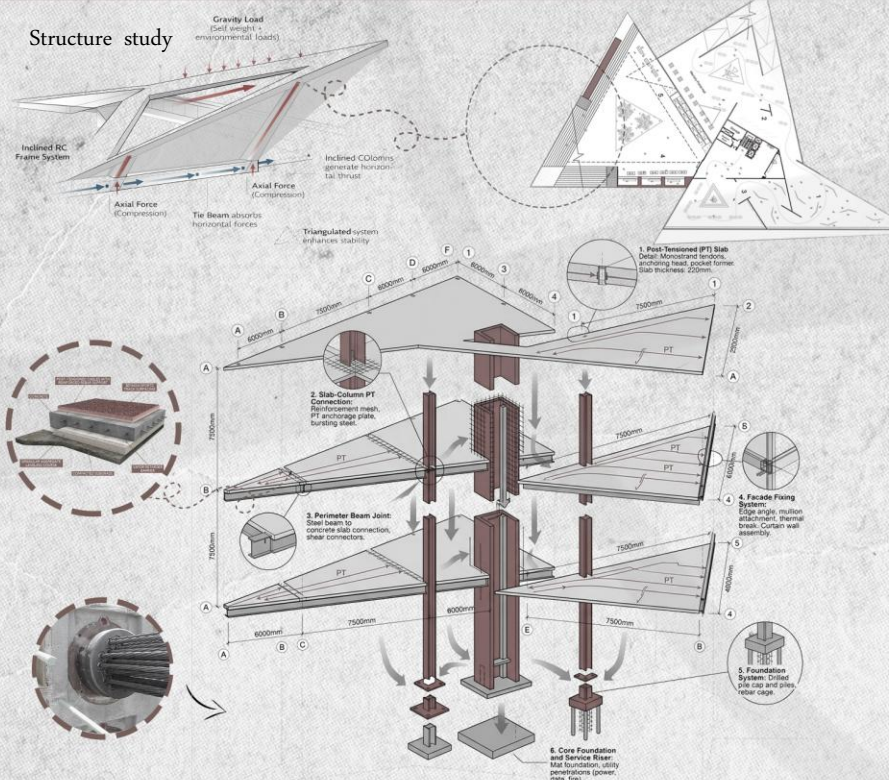


ELEVATION 2



5. PROJECT STUDIES

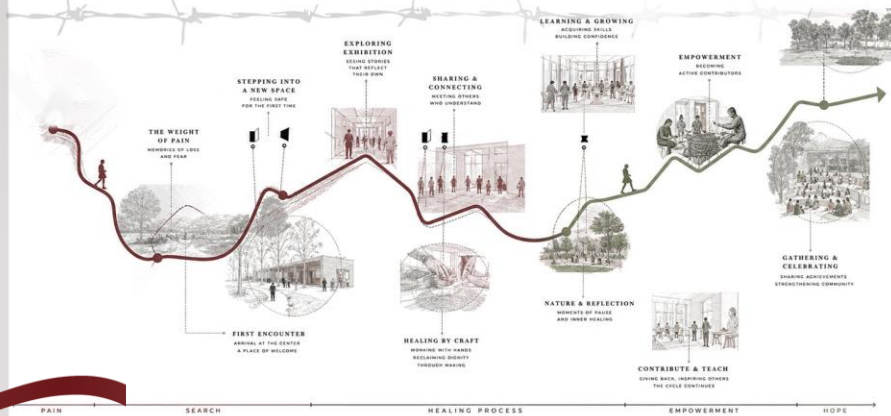
Structure study



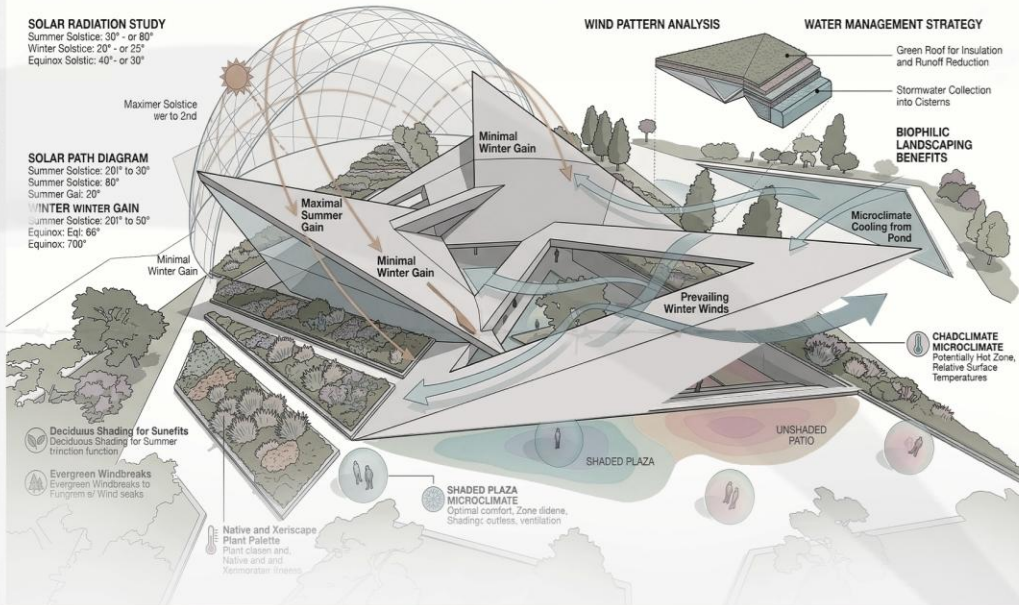
post-tension slab consists of laying a grid of high-strength steel strands in bundles to form tendons. After casting, these strands are tensioned at the appropriate pressure to provide compression to the slab and increase its capacity.

EXPERIENCE DIAGRAM

A JOURNEY FROM HARSHIP TO HEALING



DAILY ENVIRONMENTAL PERFORMANCE DIAGRAM: CONCEPTUAL SITE AND BUILDING ANALYSIS



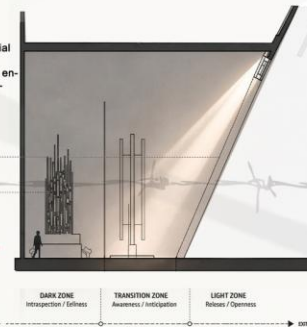
Experience diagram

EXHIBITION

The exhibition is conceived as a spatial narrative rather than a static display. It choreographs movement, light, and enclosure to guide visitors through a sequence of emotional and perceptual states.

The contrast between darkness and illumination enhances awareness, slows movement, and frames moments of reflection.

The space is not only designed to be seen, but to be felt — transforming light into a medium of storytelling.



FROM DARKNESS TO OPENNESS

The journey begins in a compressed, introspective environment where darkness dominates and exception is limited. This initial condition encourages stillness, reflection, and a heightened awareness of space.

As visitors move forward, the architecture gradually opens up, allowing light to infiltrate the transition. The illumination is not immediate, but progressive — creating a sense of anticipation and balance.

The sequence culminates in an open, illuminated place where space, light, and movement fully expand. This report represents a shift from confinement to freedom, from uncertainty to clarity.

The experience is designed to evoke emotional transformation, using architecture as a tool to translate abstract feelings into the spatial reality.



EXPERIENCE DIAGRAM / PLAN



THANK YOU

الخيام ترحب بكم
Welcome to Alkhyam
بلدية الخيام

