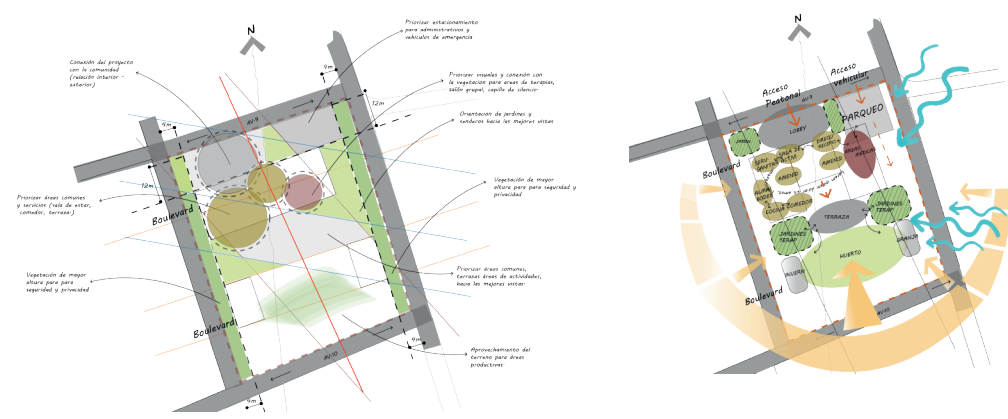


Andy Zamora Espinoza

Renacer – Recovery and Reintegration Center for Older Adults



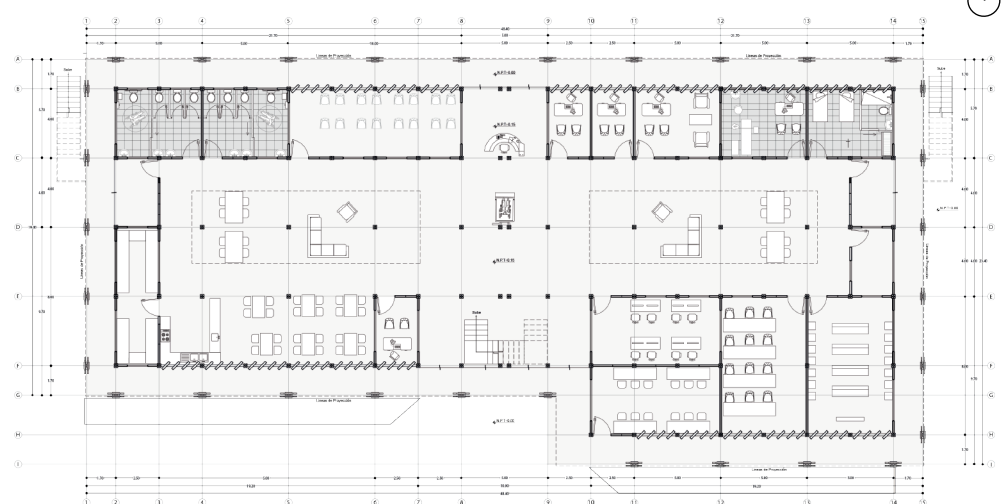
DESIGN PROCESS



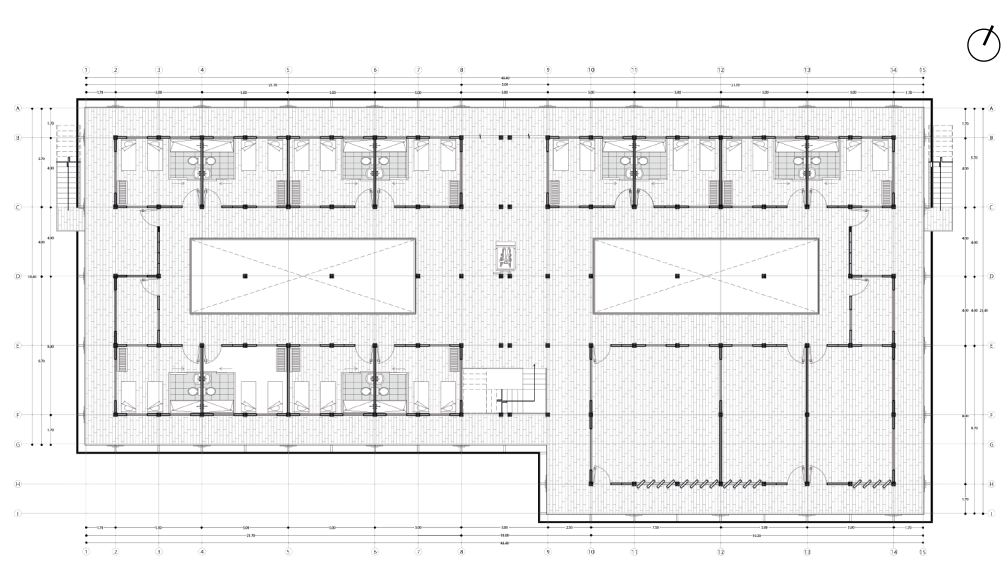
CONCEPTUAL AXES

FUNCTIONAL ZONING

FLOOR PLANS



LEVEL 1 FLOOR PLAN



LEVEL 2 FLOOR PLAN

PROJECT INFORMATION

Located in Limón, Costa Rica, the project proposes a self-sustaining recovery and reintegration center for older adults recovering from addiction. Through human-scale design, passive climate strategies, and a close relationship with nature, the project promotes autonomy, sustainability, and social reintegration.

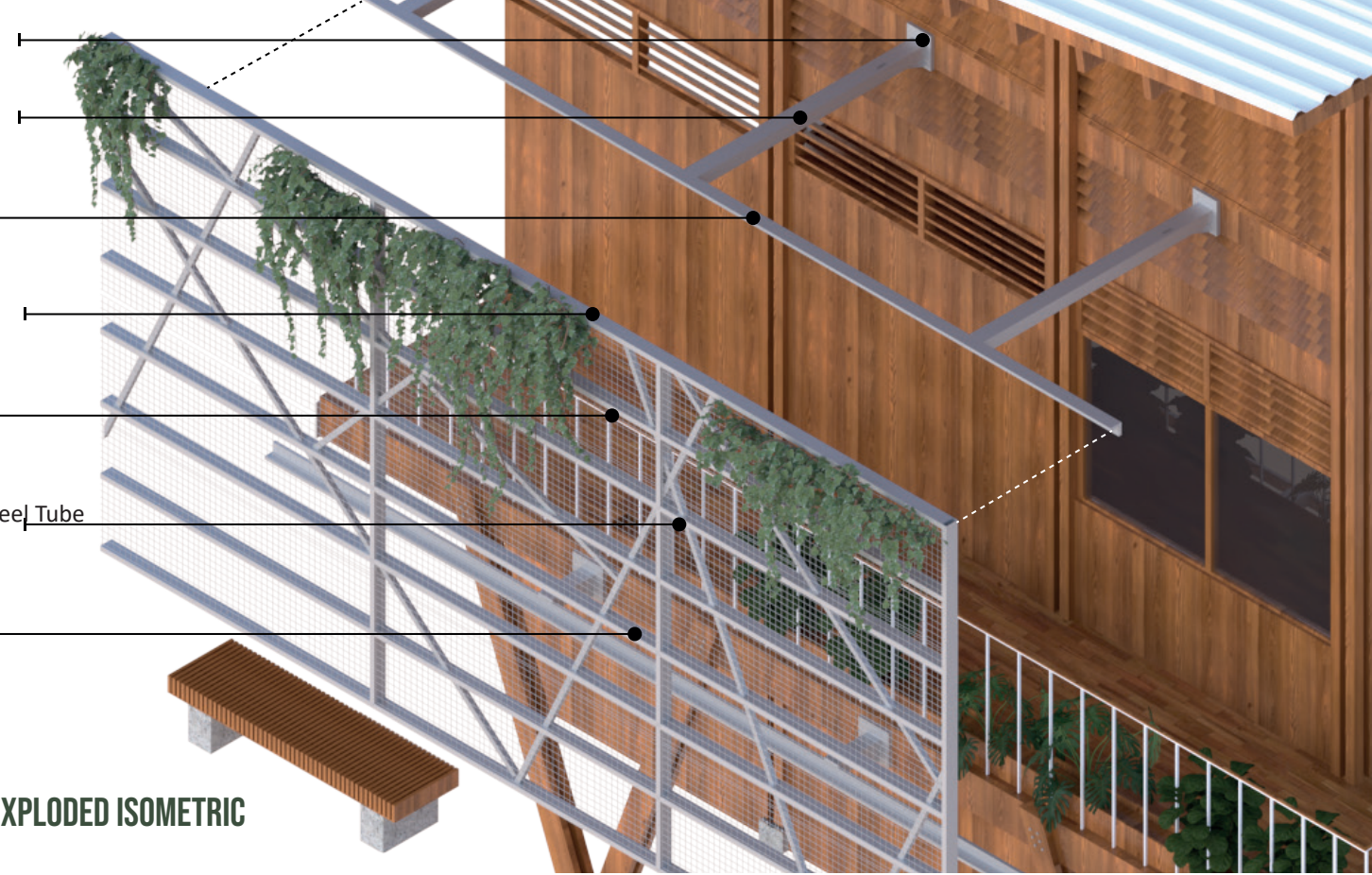
GENERAL CONCEPT

The RENACER concept is expressed through transitional axes that organize the project and guide the zoning from public to residential areas, symbolizing a journey of transformation. This framework connects the different programmatic zones while integrating architecture with the natural environment, reinforcing the idea of a new beginning through movement, experience, and space.

FACADE SYSTEM

- Galvanized Steel Plate 250 x 300 x 6.0 mm
- Rectangular Steel Tube 120 x 40 x 3 mm
- Galvanized Steel Angle L 40 x 40 x 4 mm
- Rectangular Steel Tube 50 x 30 x 2.0 mm
- Welded Wire Mesh 50 x 50 mm
- Galvanized Rectangular Steel Tube 50 x 30 x 2.0 mm
- Angular galvanizado L 40 x 40 x 4 mm

ENVELOPE SYSTEM – EXPLODED ISOMETRIC



LEVEL 1 VIEW



LEVEL 2 VIEW



GROUP THERAPY ROOM



RESIDENT BEDROOM

