

# SITE ANALYSIS, ZONING AND CONCEPT

## SITE LOCATION

PROJECT: ARSENAL MEMORY PARK INTERPRETATION CENTRE  
 COUNTRY: ARGENTINA  
 REGION: TUCUMÁN PROVINOK  
 SITE REFERENCE: GAPLON 9 (ARCHAKOLOG EXCAVATION ZONE)

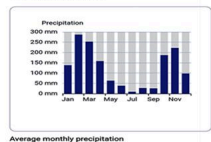
LATITUDE: 26 SOUTH  
 LONGITUDE: 65 WEST  
 HEMISPHERE: SOUTHERN HEMISPHER



## CLIMATE ANALYSIS

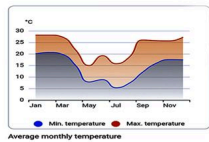
**CLIMATE TYPE**  
 Warm and humid subtropical climate  
 Hot summers and mild winters  
 Heavy seasonal rainfall

**WIND**  
 Open landscape allows natural airflow  
 Vegetation helps reduce heat and improve comfort



**SUNLIGHT**  
 Strong sunlight throughout the year  
 West-facing areas receive intense afternoon heat

**RAINFALL**  
 High rainfall during summer season  
 Risk of surface runoff and flooding in low areas



## PROJECT DISCRPTION

- Memorial & cultural landscape on historic site (clandestine detention center, 1976-1978)
- Transforms violence/silence into space for remembrance, learning, healing
- Preserves Galpón 9, barracks; adds interpretation center, memorial gallery, amphitheater, academic spaces

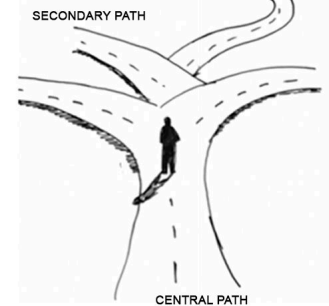
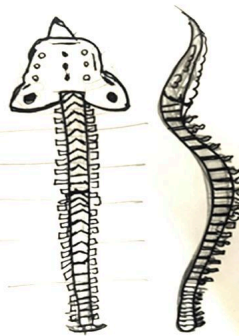
## CONCEPT

**"The Spine of Memory"**  
 The concept derives from the human spinal cord — the central element that carries pain, memory, and life through the body.

The design is inspired by the human spine and ribcage, where the central spine acts as the main circulation path connecting all spaces



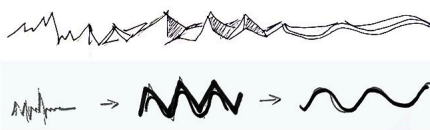
he flowing circulation creates an architectural expression of memory, connection, healing, and collective experience.



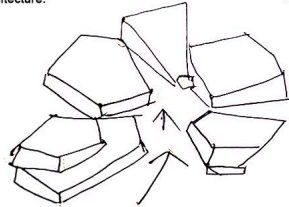
Branching side pathways symbolize different memories and emotional journeys, leading to memorial, reflection, and public spaces

## FORM DEVELOPMENT

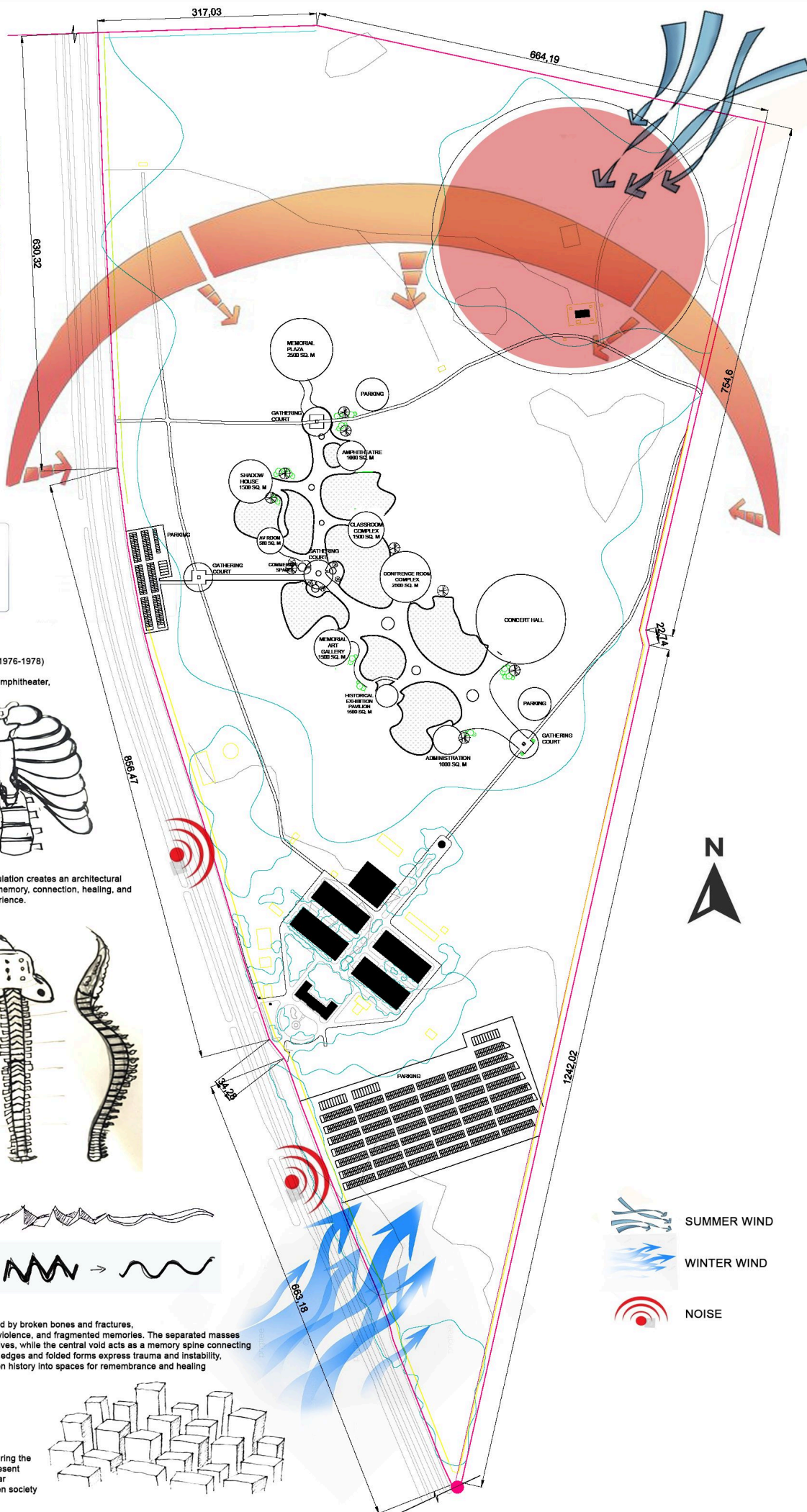
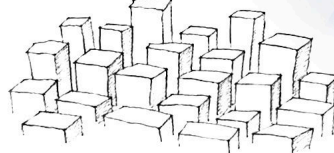
The form development starts from the sharp ECG - wave symbolizing pain trauma  
 Interrupted life  
 The ECG pattern transforms into fractured geometric folds inspired by broken history, which further evolve into a parametric roof system.  
 The transition from sharp forms to smooth curves represents healing, continuity, and hope through architecture.

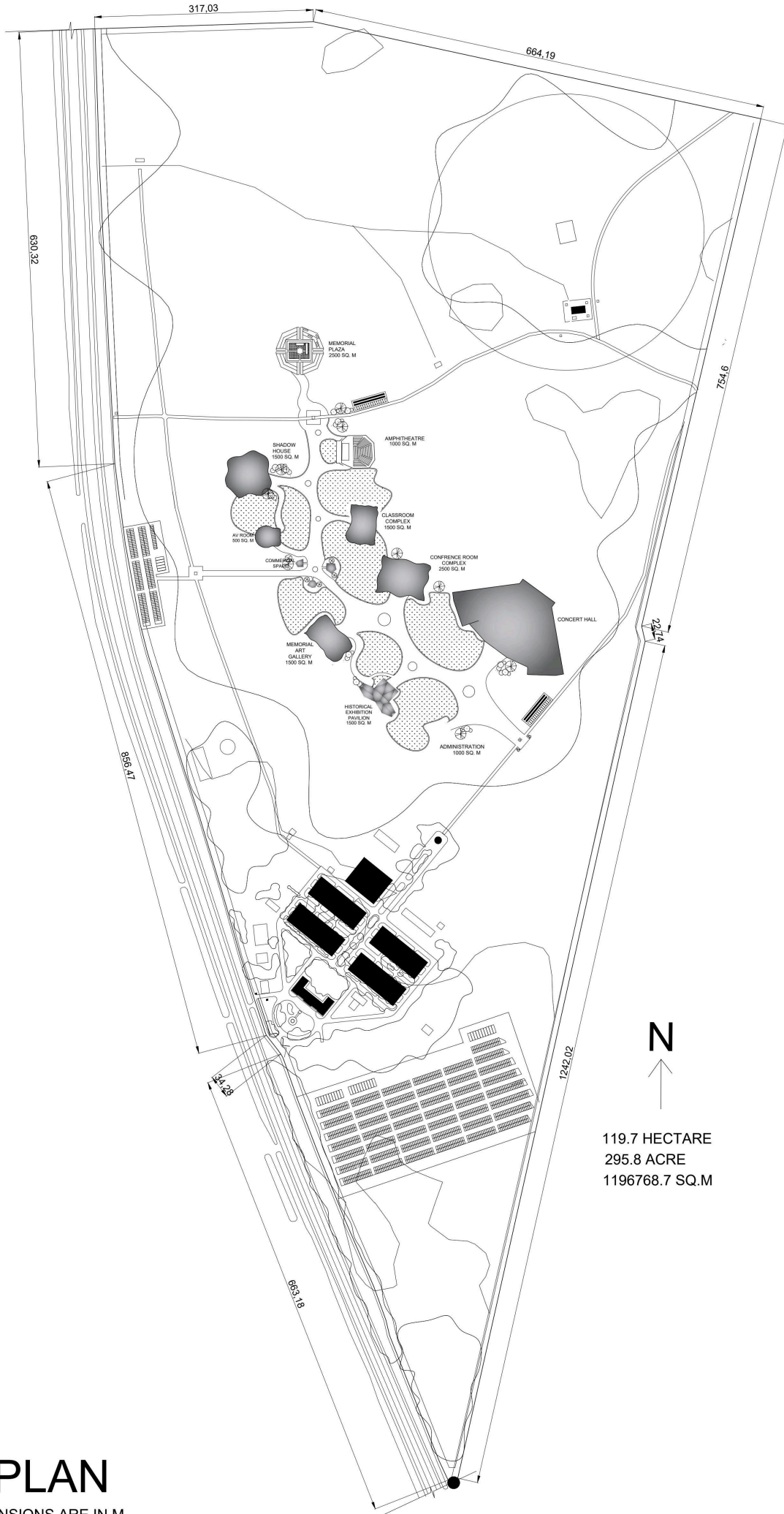


The form is inspired by broken bones and fractures, symbolizing pain, violence, and fragmented memories. The separated masses represent broken lives, while the central void acts as a memory spine connecting the spaces. Sharp edges and folded forms express trauma and instability, transforming broken history into spaces for remembrance and healing



The varying block heights represent different age groups of victims affected during the dictatorship. Lower blocks symbolize children and youth, medium heights represent adults, and taller blocks represent elders and voices of resistance. The irregular arrangement reflects fragmented lives, loss, and the emotional impact of broken society

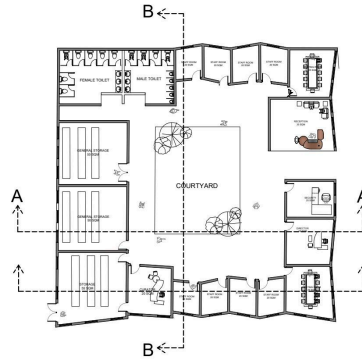
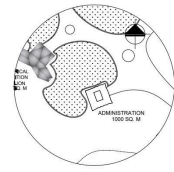




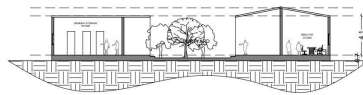
119.7 HECTARE  
295.8 ACRE  
1196768.7 SQ.M

## 01 SITE PLAN

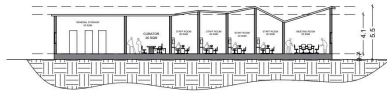
SCALE - 1 : 200, ALL DIMENSIONS ARE IN M



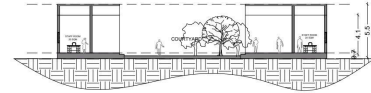
FLOOR PLAN



SECTION AA'



SECTION CC'



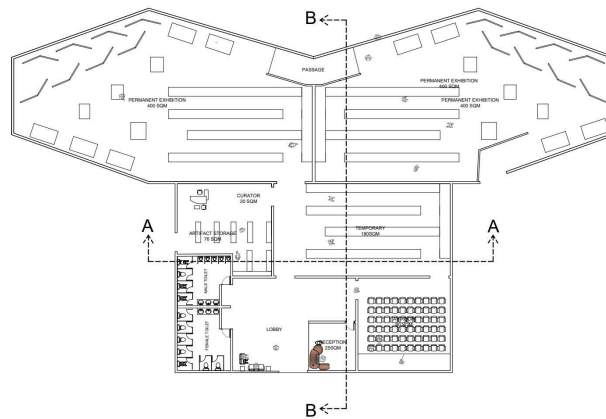
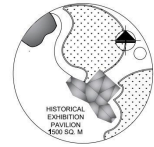
SECTION BB'



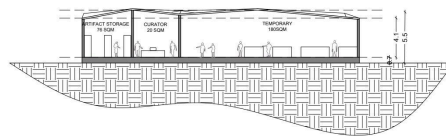
SCALE - 1: 200, ALL DIMENSIONS ARE IN M

# 03 HISTORIC EXHIBITION PAVILLION

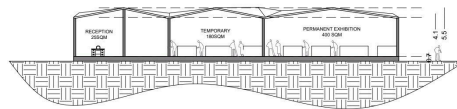
1500 SQ. M



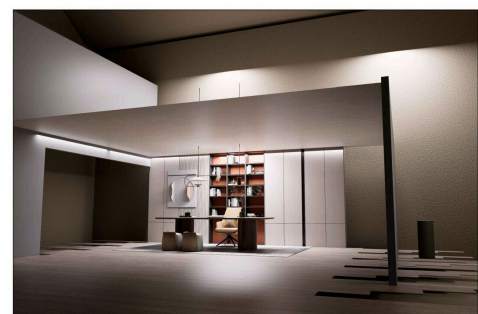
FLOOR PLAN



SECTION AA'

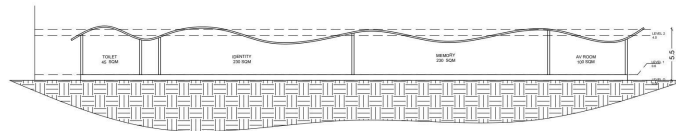
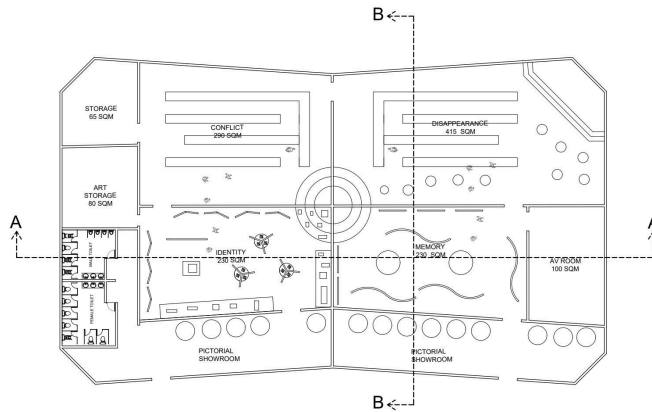
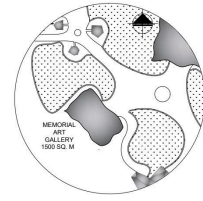


SECTION BB'

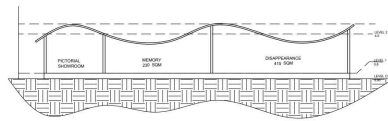


SCALE - 1: 200, ALL DIMENSIONS ARE IN M

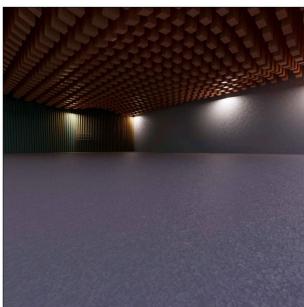
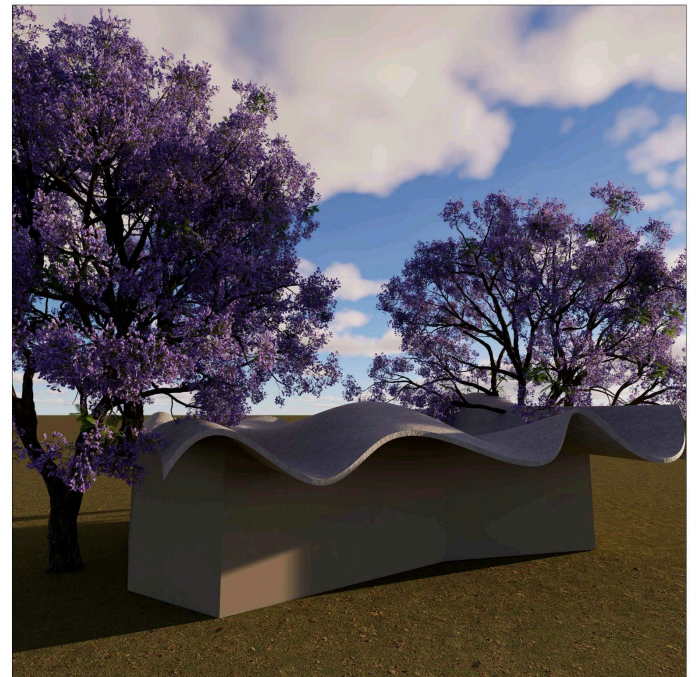
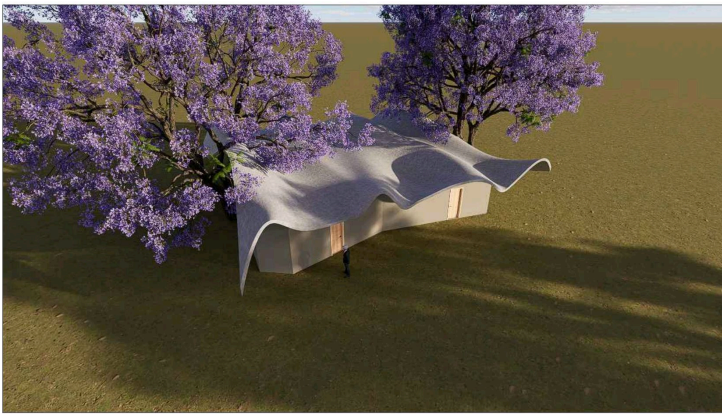
# 04 MEMORIAL ART GALLERY 1500 SQ. M

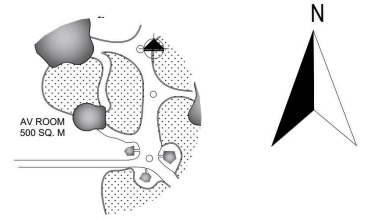
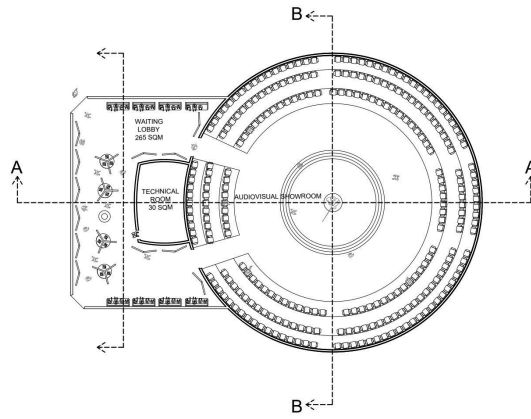


SECTION AA'

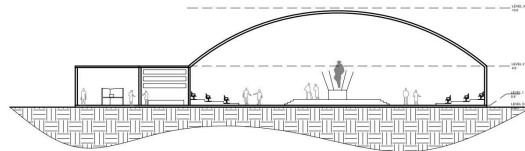


SECTION BB'

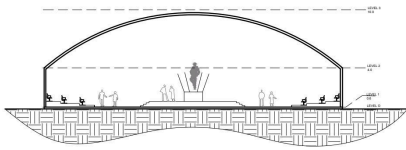




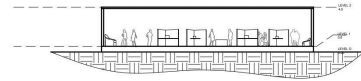
FLOOR PLAN



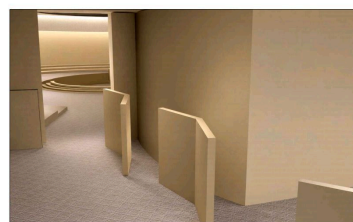
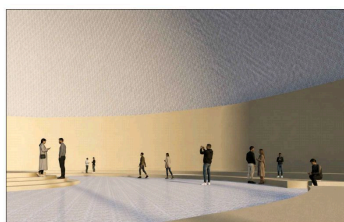
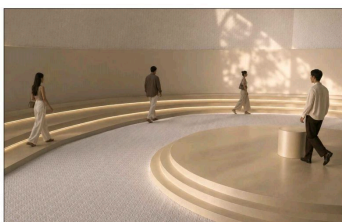
SECTION AA'



SECTION BB'

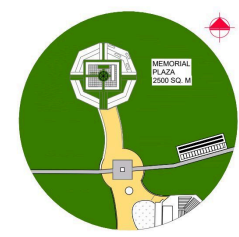
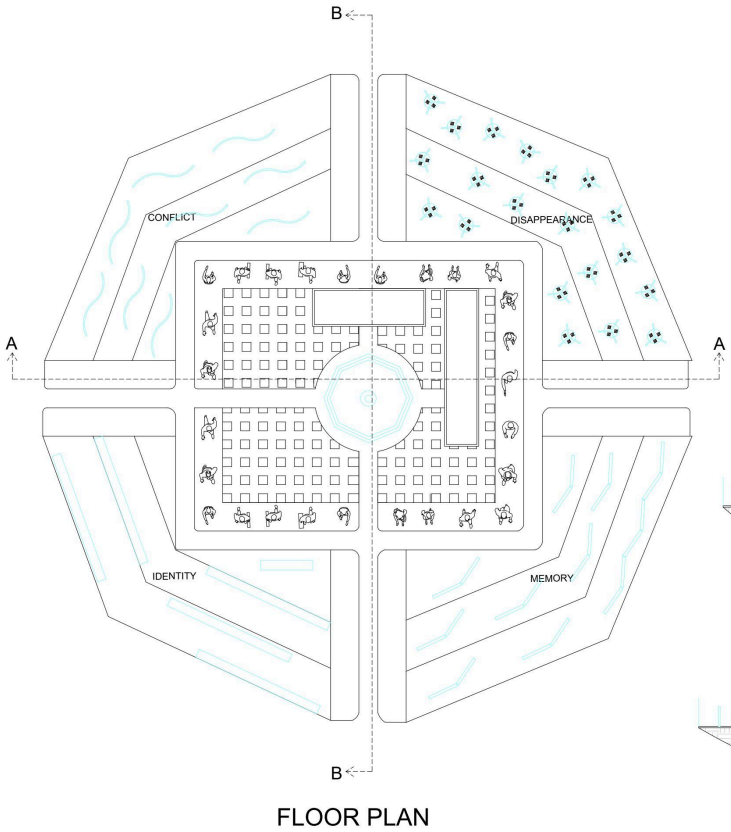


SECTION CC'



SCALE - 1: 200, ALL DIMENSIONS ARE IN M

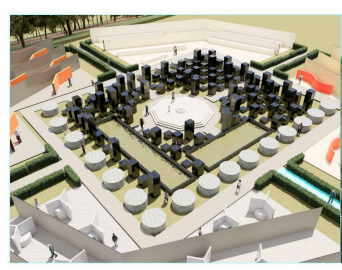
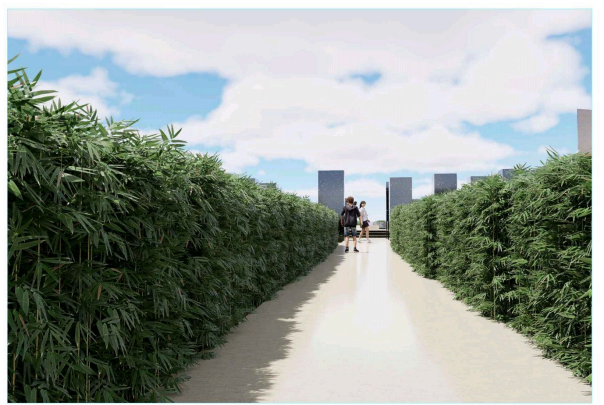
# 06 MEMORY PLAZA 2500 SQ. M



SECTION AA'



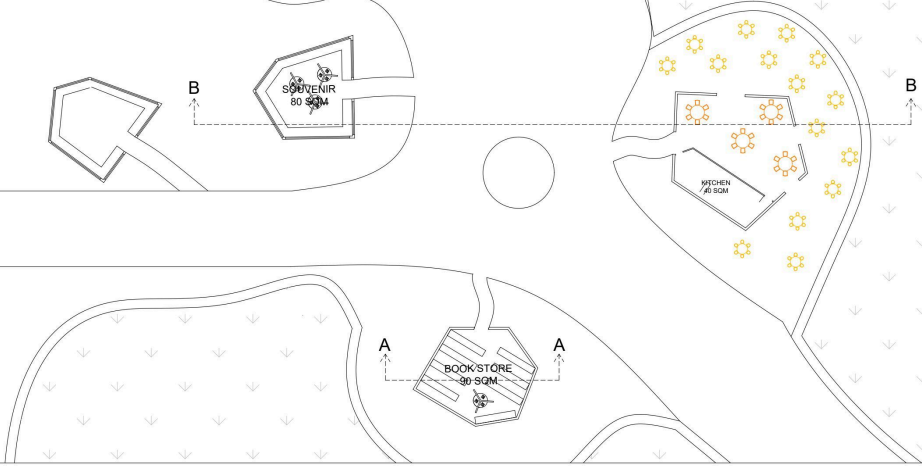
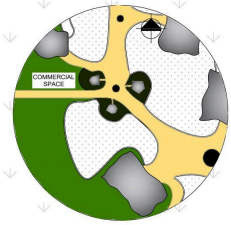
SECTION BB'



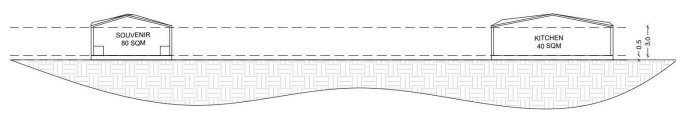
SCALE - 1: 200, ALL DIMENSIONS ARE IN M

# INTERPRETATION CENTRE

# 07 COMMERCIAL PREMISES 1500 SQ. M



FLOOR PLAN



SECTION BB'



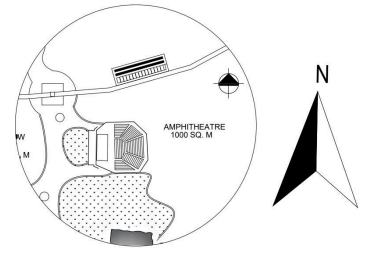
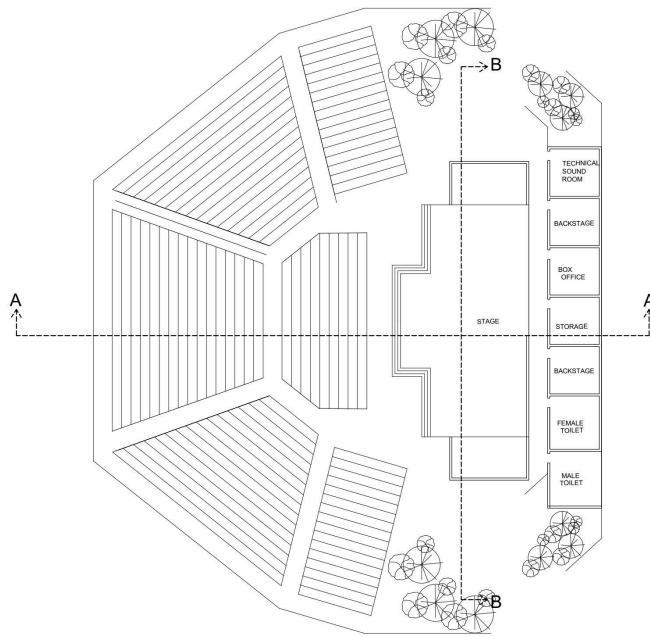
SECTION AA'



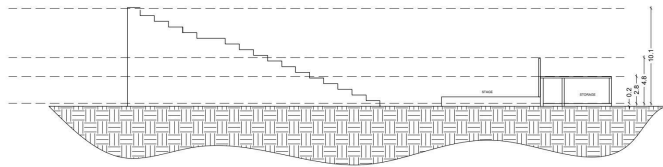
SCALE - 1: 200, ALL DIMENSIONS ARE IN M

# INTERPRETATION CENTRE

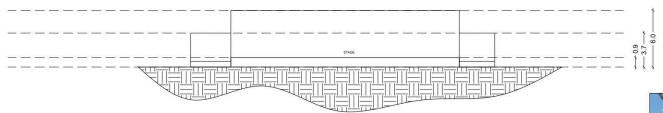
# 08 AMPHITHEATER 1000 SQ. M



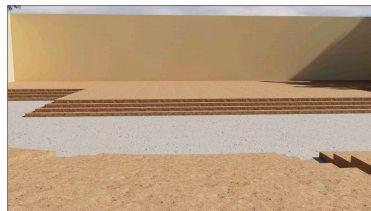
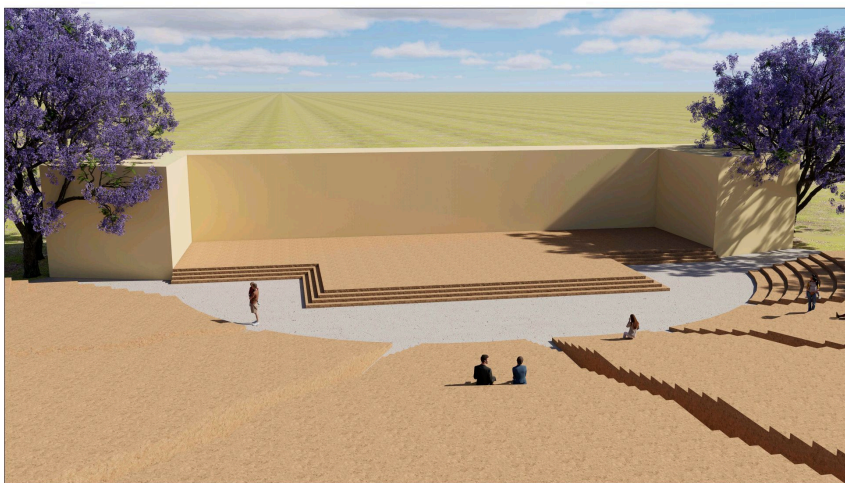
FLOOR PLAN



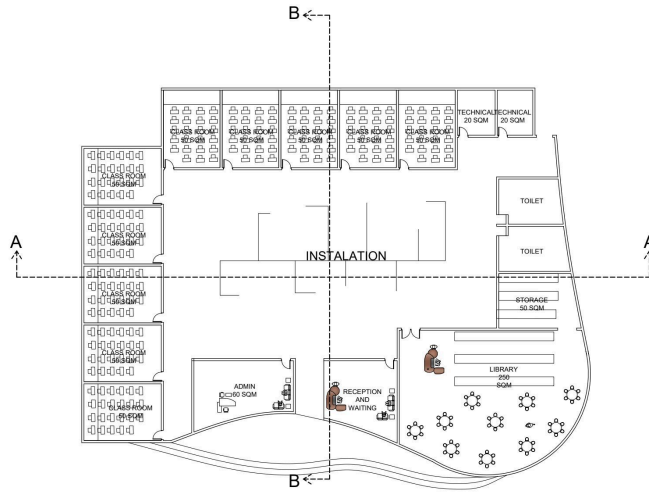
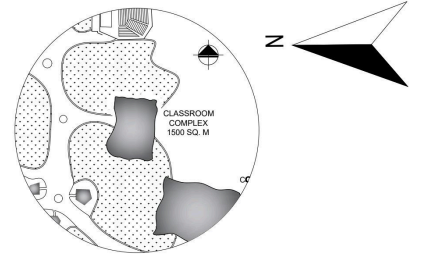
SECTION AA'



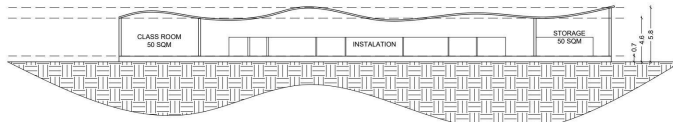
SECTION BB'



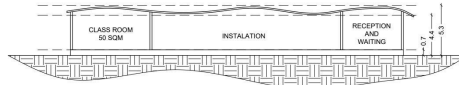
# 09 CLASSROOM COMPLEX 2500 SQ. M



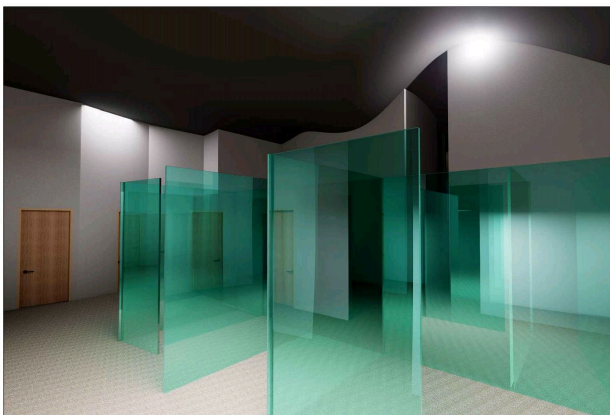
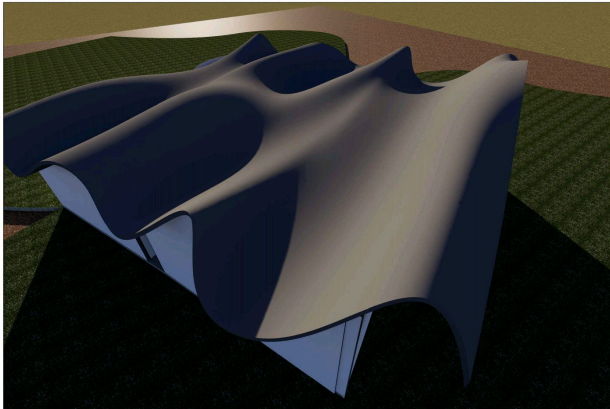
FLOOR PLAN



SECTION AA'



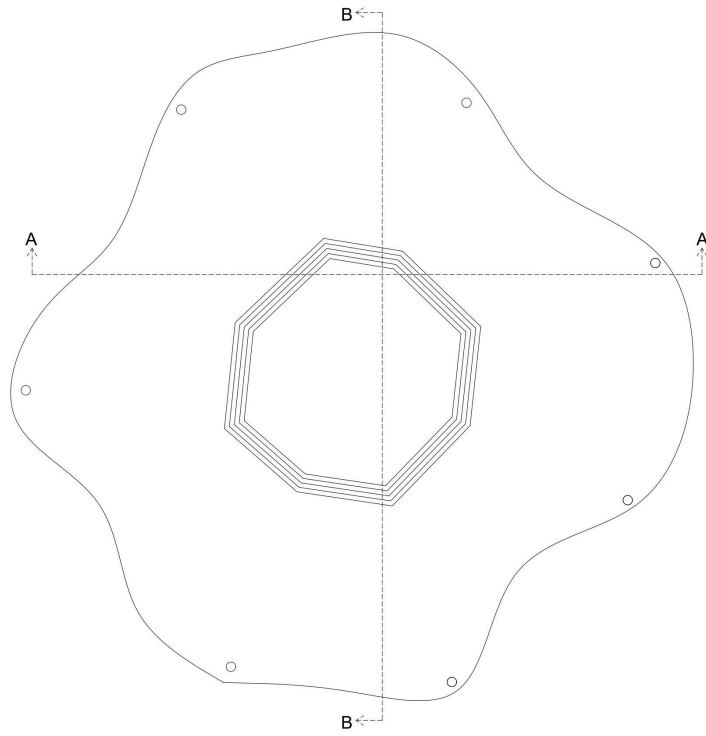
SECTION BB'



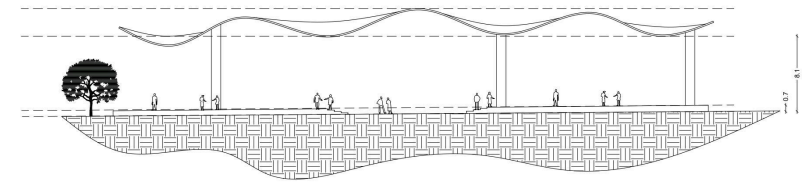
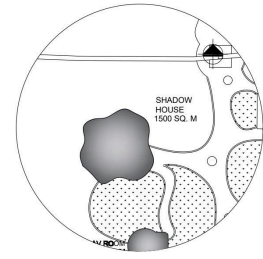
SCALE - 1: 200, ALL DIMENSIONS ARE IN M

# INTERPRETATION CENTRE

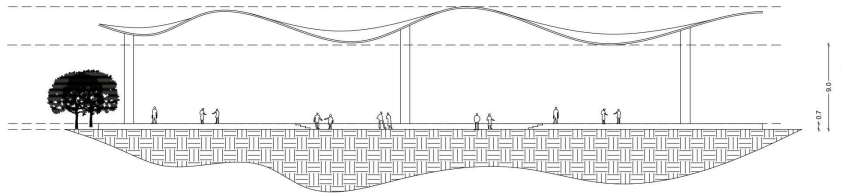
# 10 SHADE HOUSE 400 SQ. M



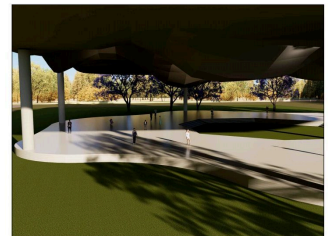
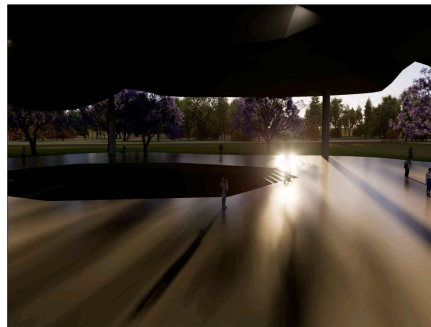
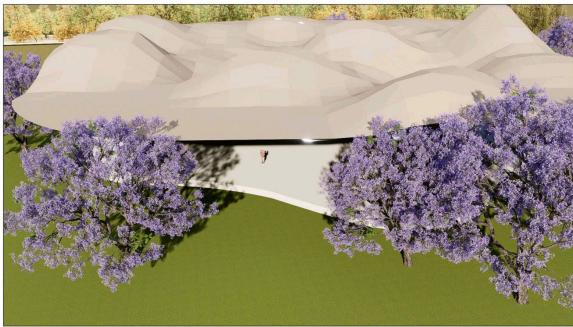
FLOOR PLAN



SECTION AA'



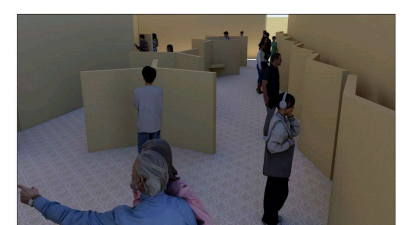
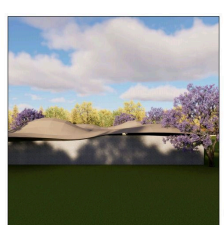
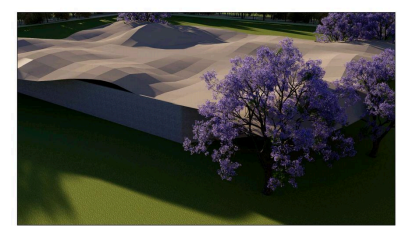
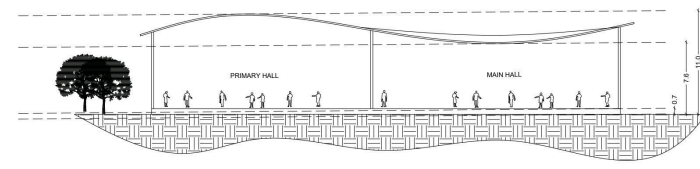
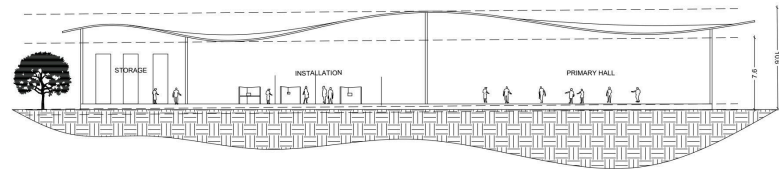
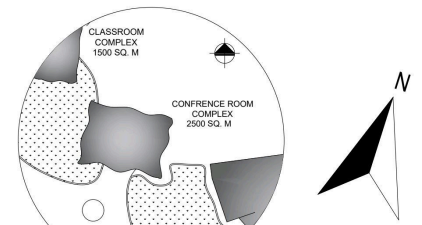
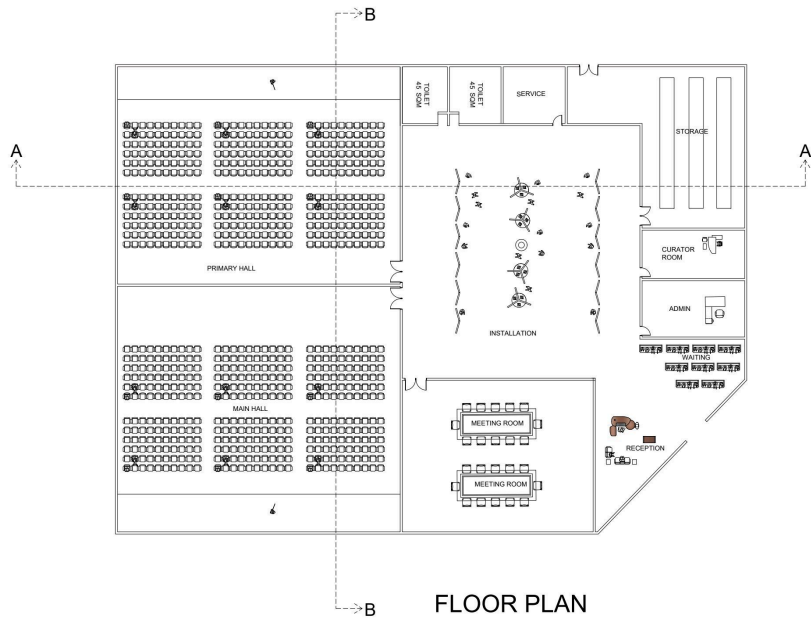
SECTION BB'



SCALE - 1: 200, ALL DIMENSIONS ARE IN M

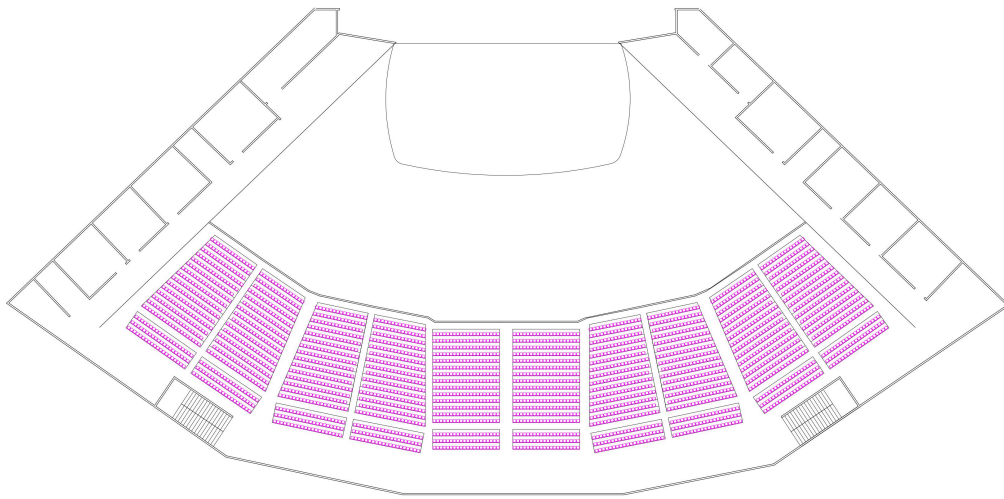
## INTERPRETATION CENTRE

# 11 CONFERENCE ROOM COMPLEX 2500 SQ. M



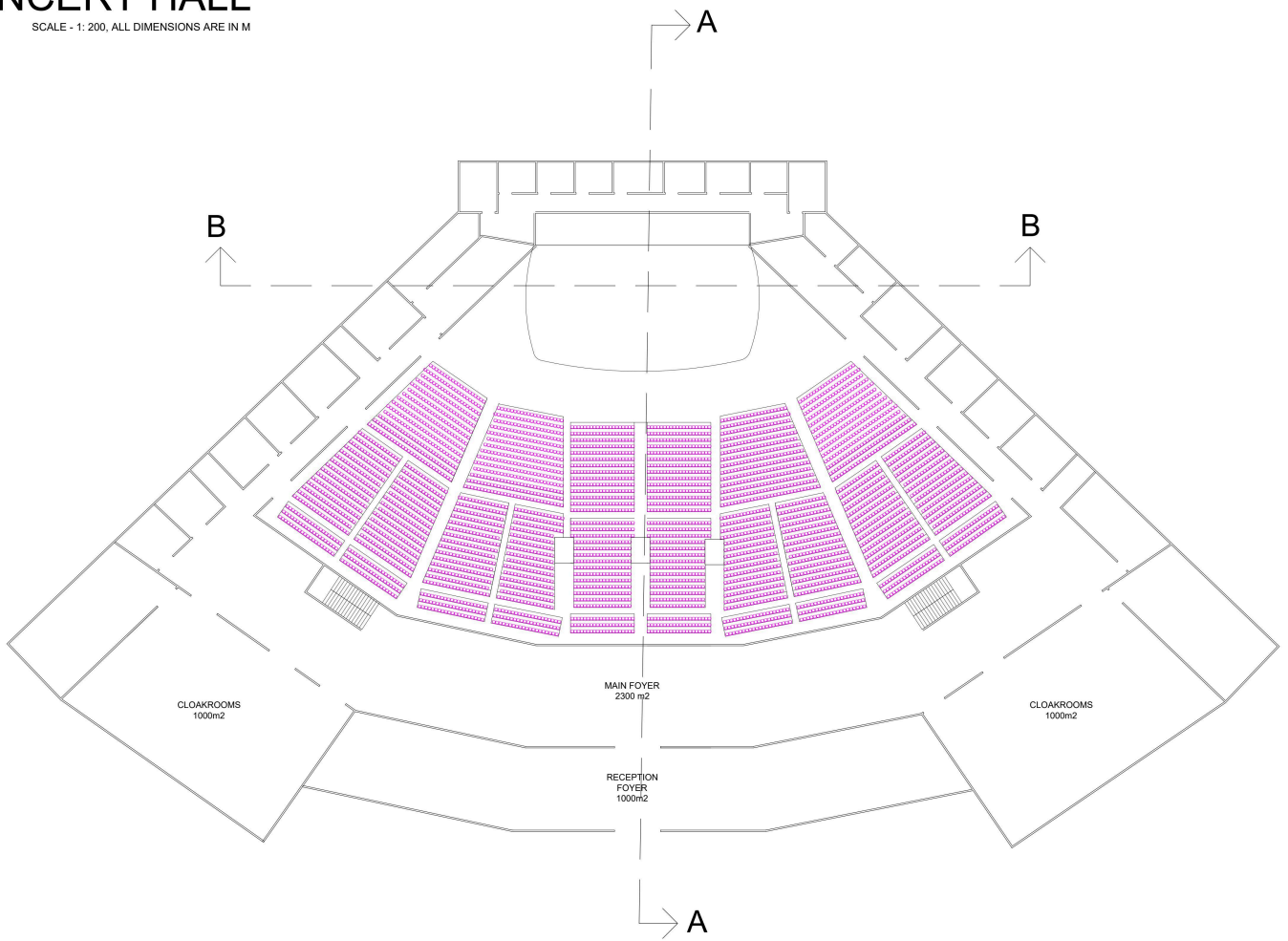
# CONCERT HALL

SCALE - 1: 200, ALL DIMENSIONS ARE IN M

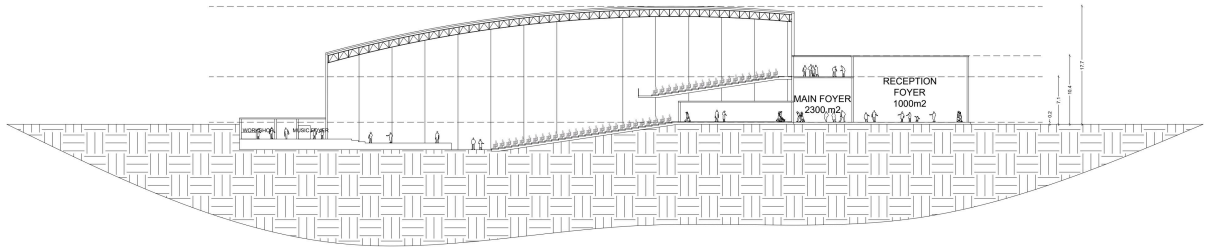


# CONCERT HALL

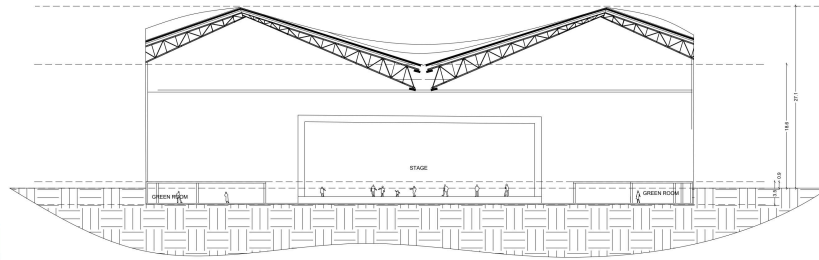
SCALE - 1: 200, ALL DIMENSIONS ARE IN M



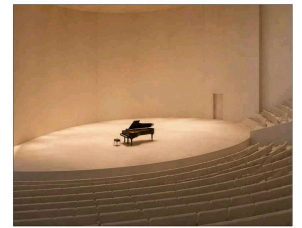
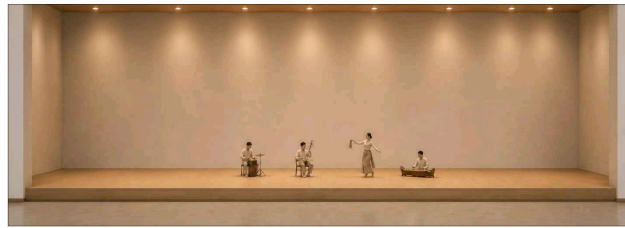
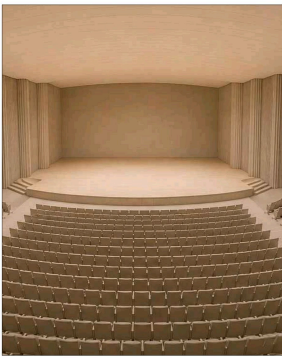
# CONCERT HALL



SECTION AA'



SECTION BB'



SCALE - 1: 200, ALL DIMENSIONS ARE IN M

## INTERPRETATION CENTRE

FAREEDKHAN, 230101601067, B. ARCH, B - SECTION