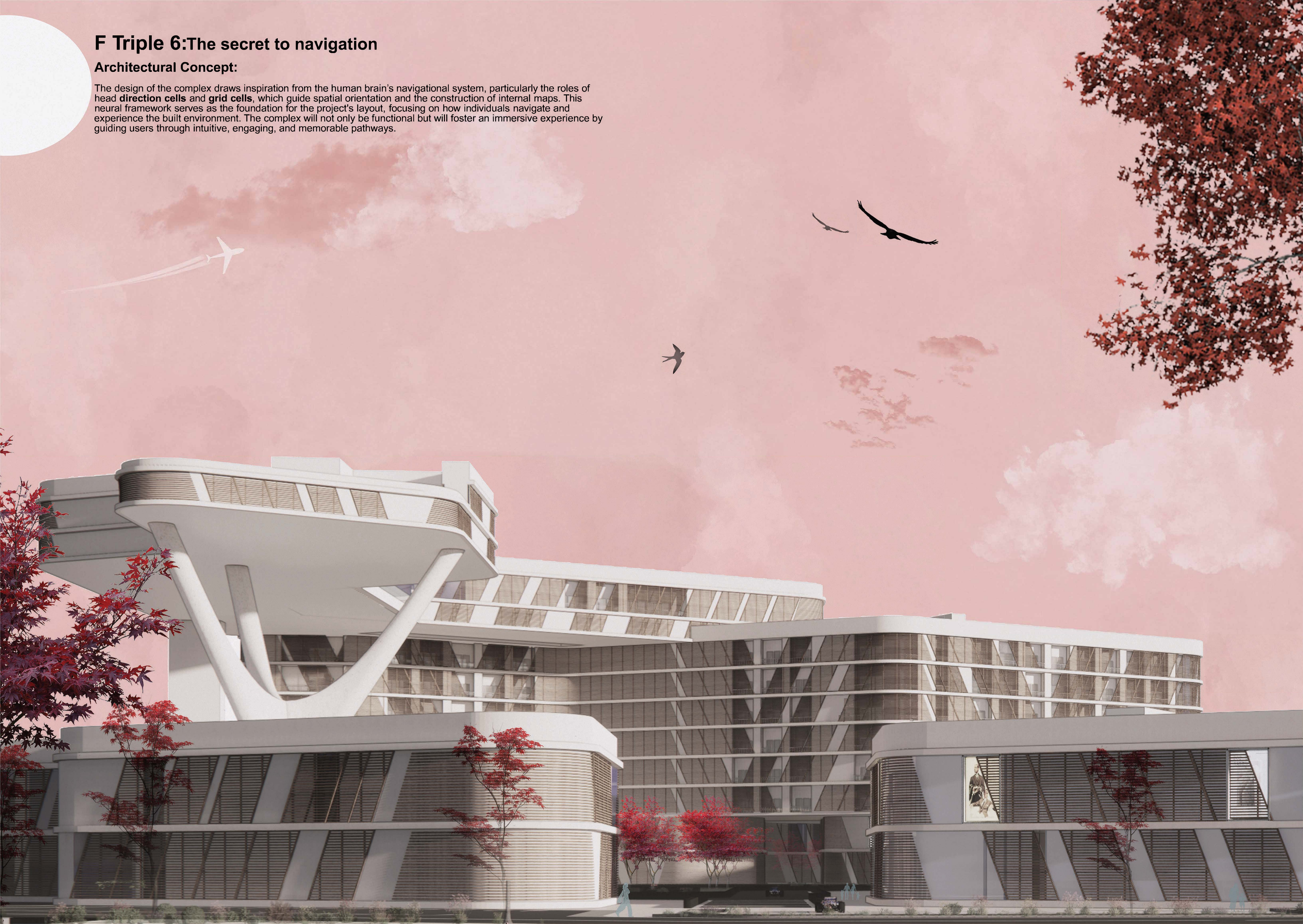


F Triple 6: The secret to navigation

Architectural Concept:

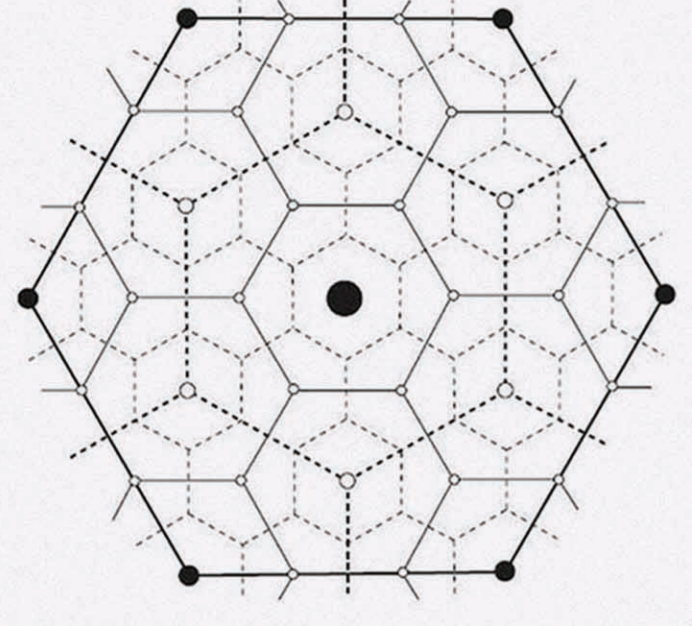
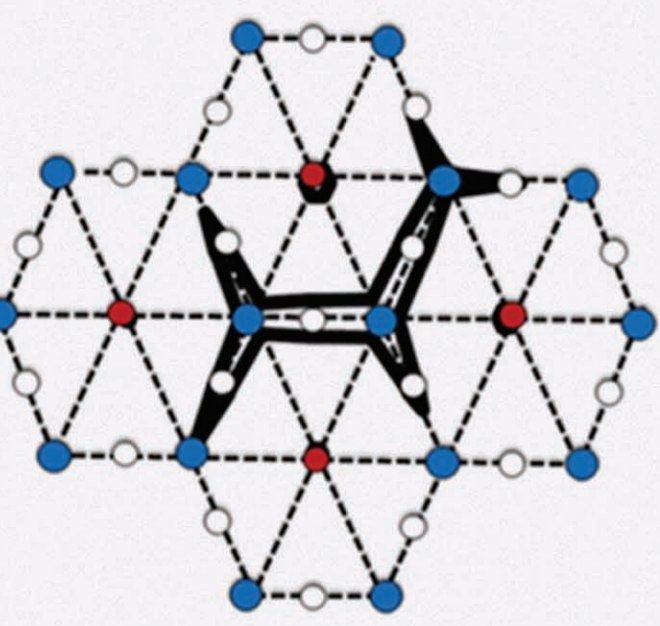
The design of the complex draws inspiration from the human brain's navigational system, particularly the roles of head **direction cells** and **grid cells**, which guide spatial orientation and the construction of internal maps. This neural framework serves as the foundation for the project's layout, focusing on how individuals navigate and experience the built environment. The complex will not only be functional but will foster an immersive experience by guiding users through intuitive, engaging, and memorable pathways.



Keywords:

- Direction flow
- Cognitive spaces
- Organized routes
- Grid like spatial
- Modules
- Metric distance
- Consistant
- Hexagonal grid

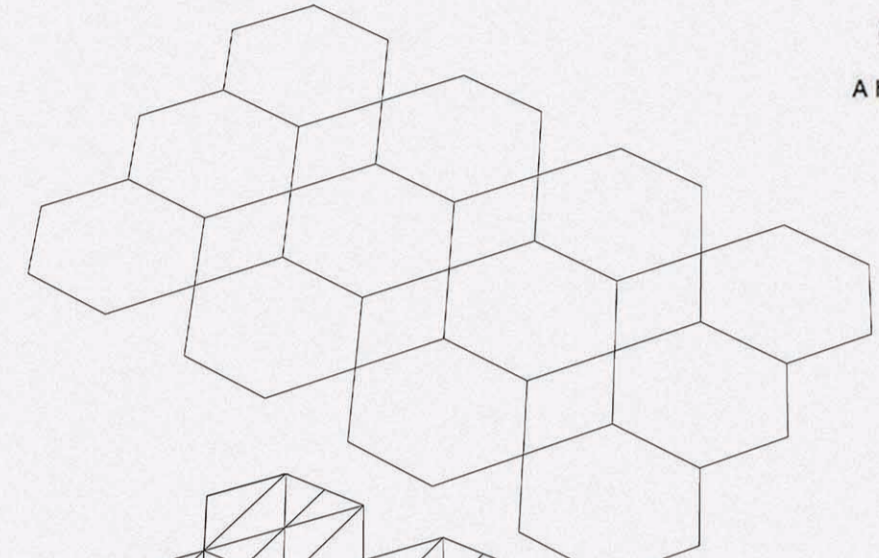
Form Generation:



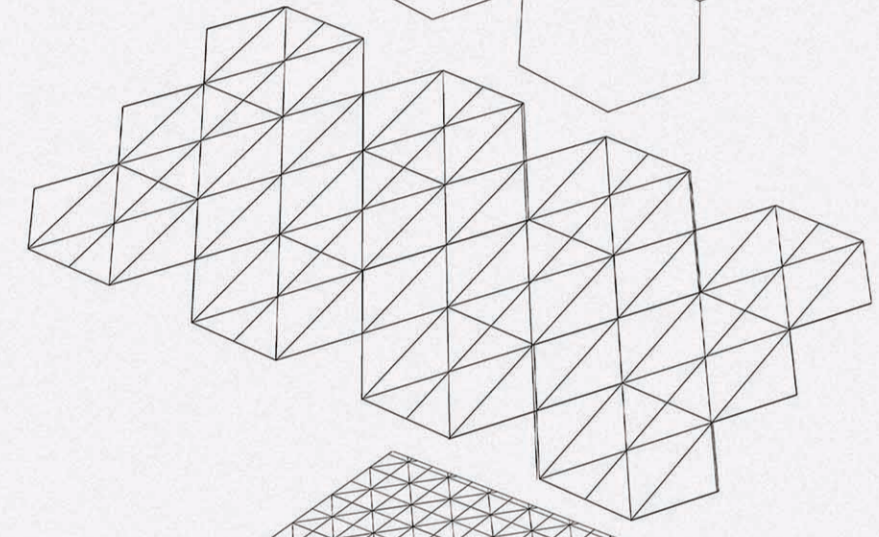
Central place
 ○ Fourth order
 ○ Third order
 ● Second order
 ● First order

Market area boundary
 - - - - -
 - - - - -
 - - - - -
 - - - - -

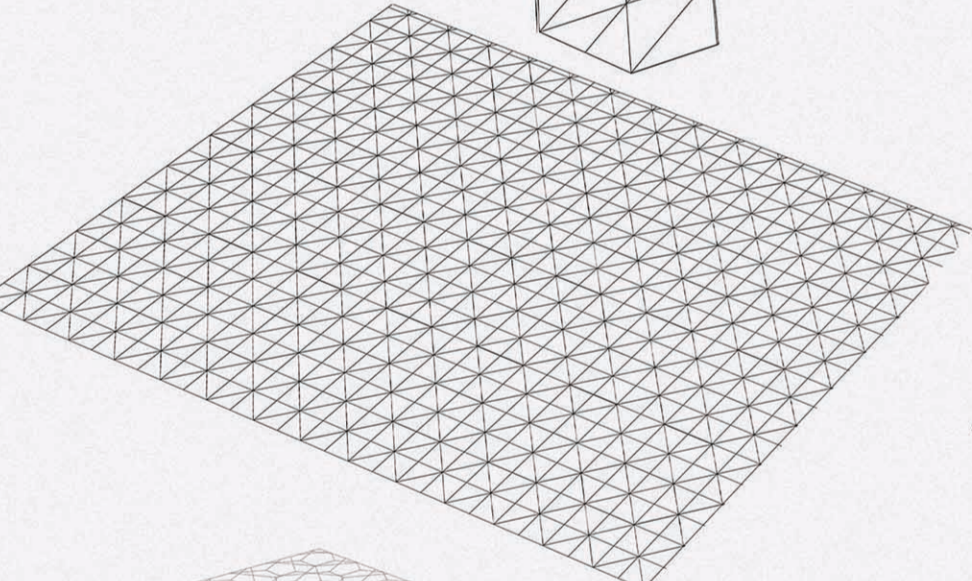
A hierarchical spatial agreement of central places.



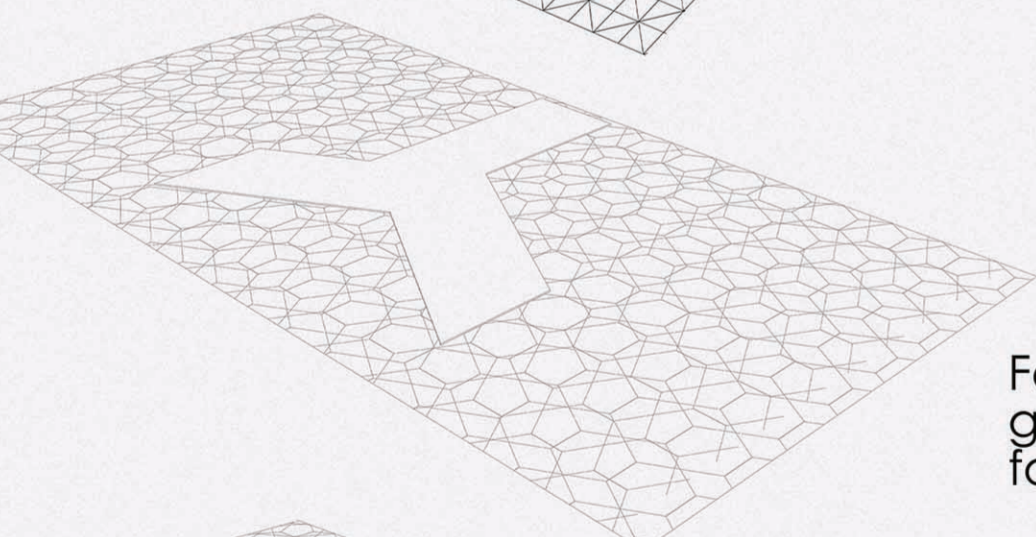
Taking the main hexagonal shape



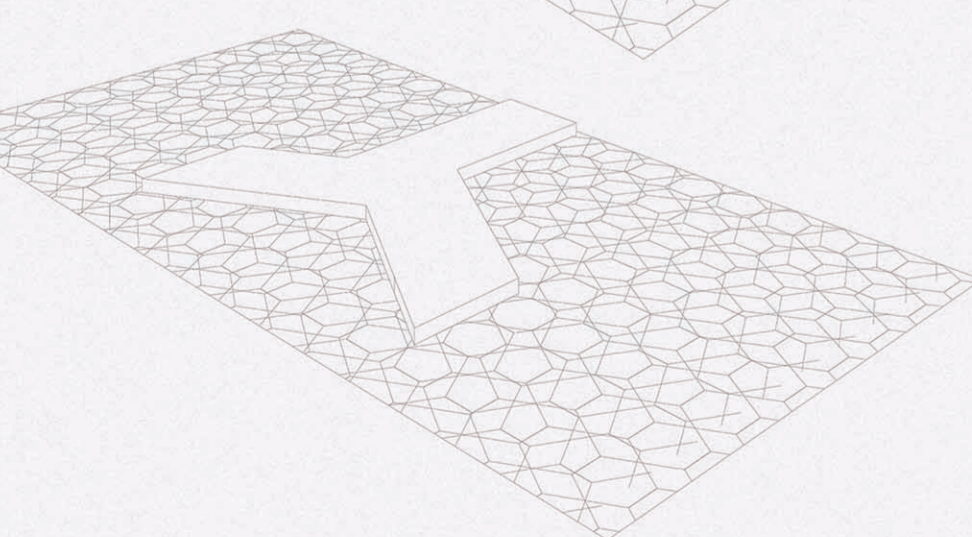
creating axis



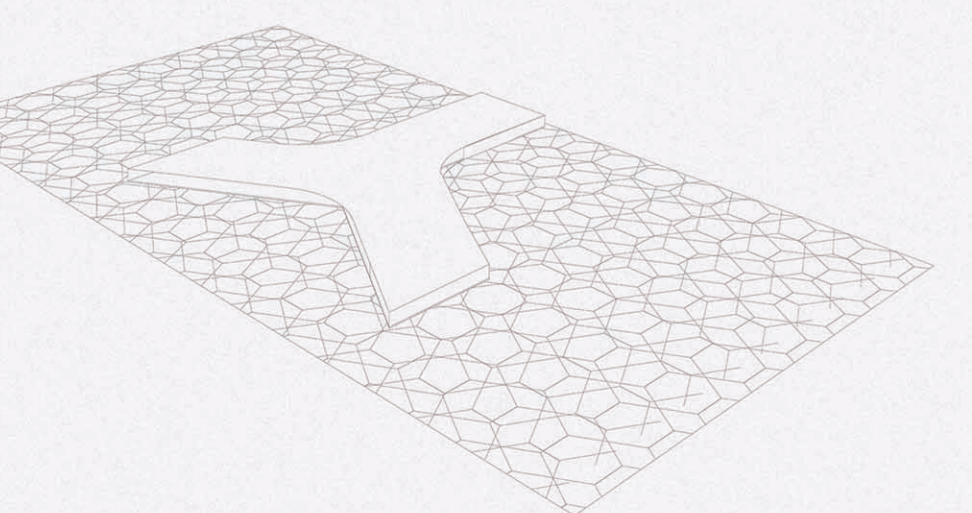
Aplying the grid on site



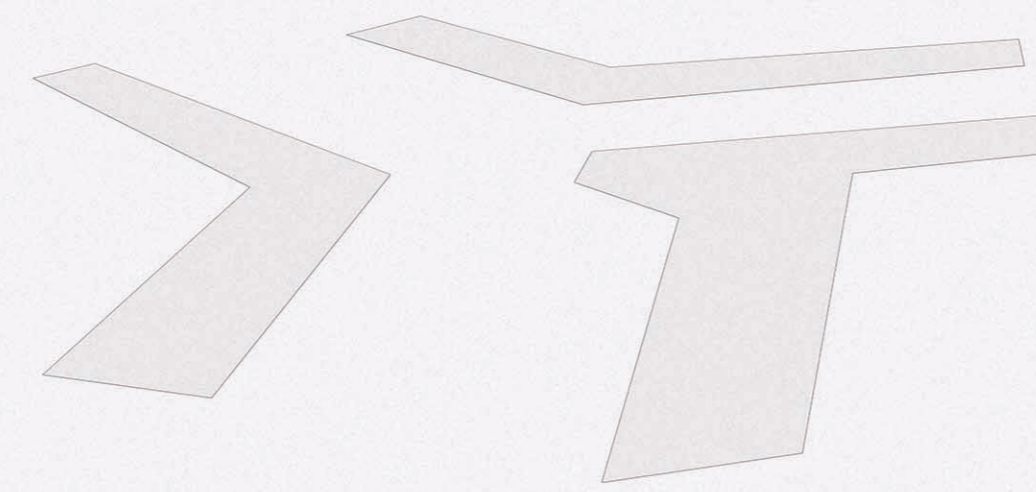
Following the hexagonal grid , creating a triangular form



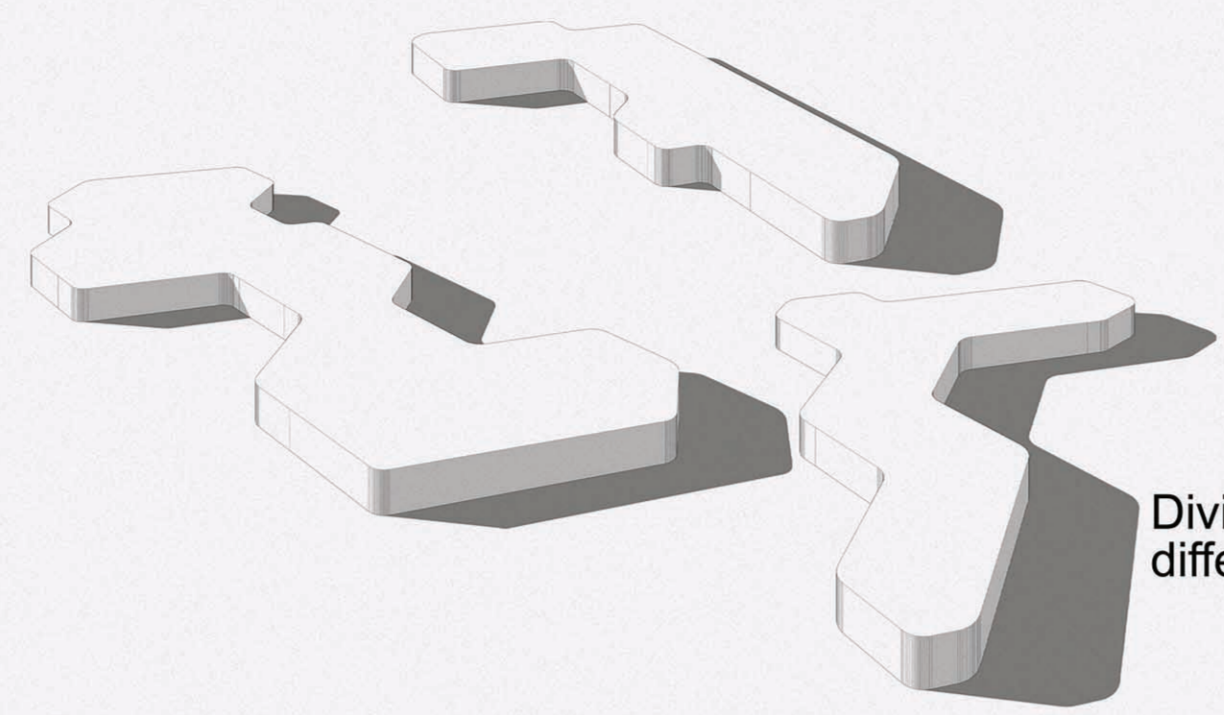
Extruding the form



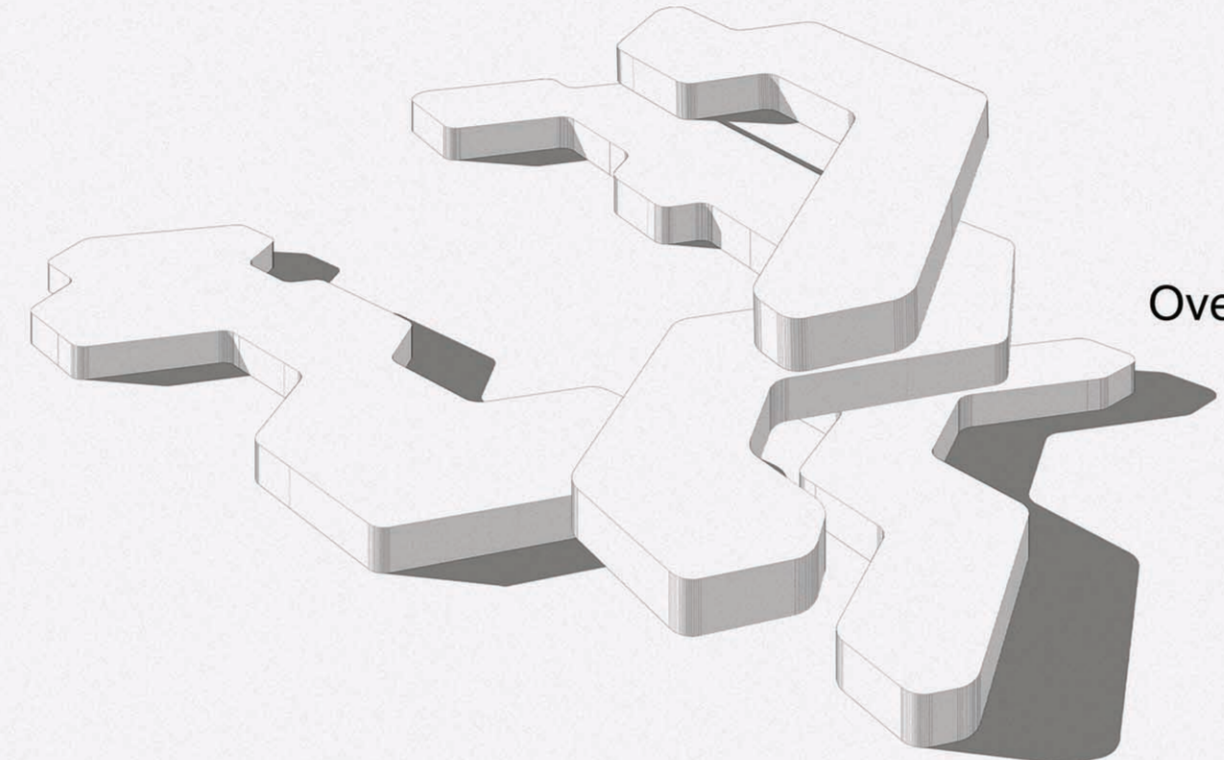
Creating curves at edges making it more dynamic



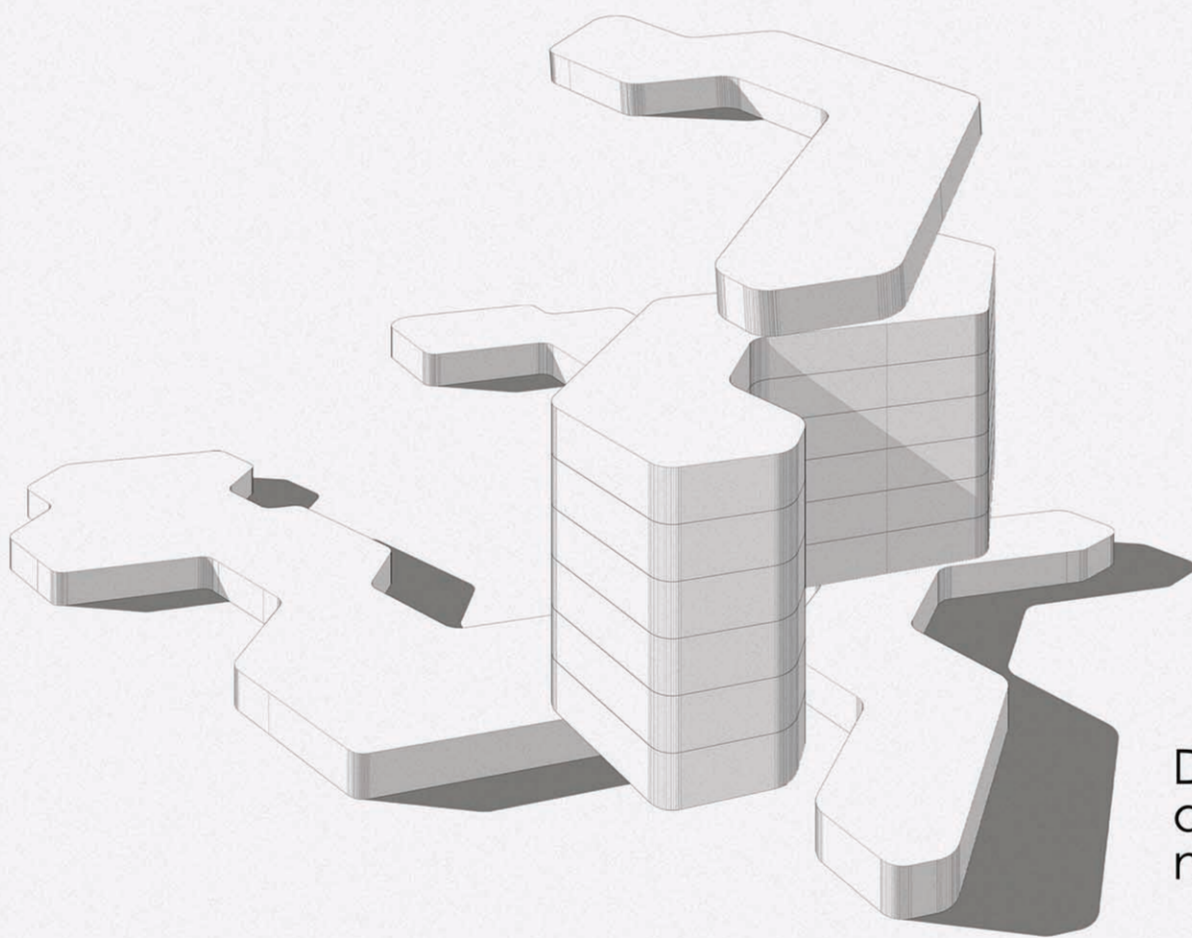
Get each form away from the other to create an internal space between them



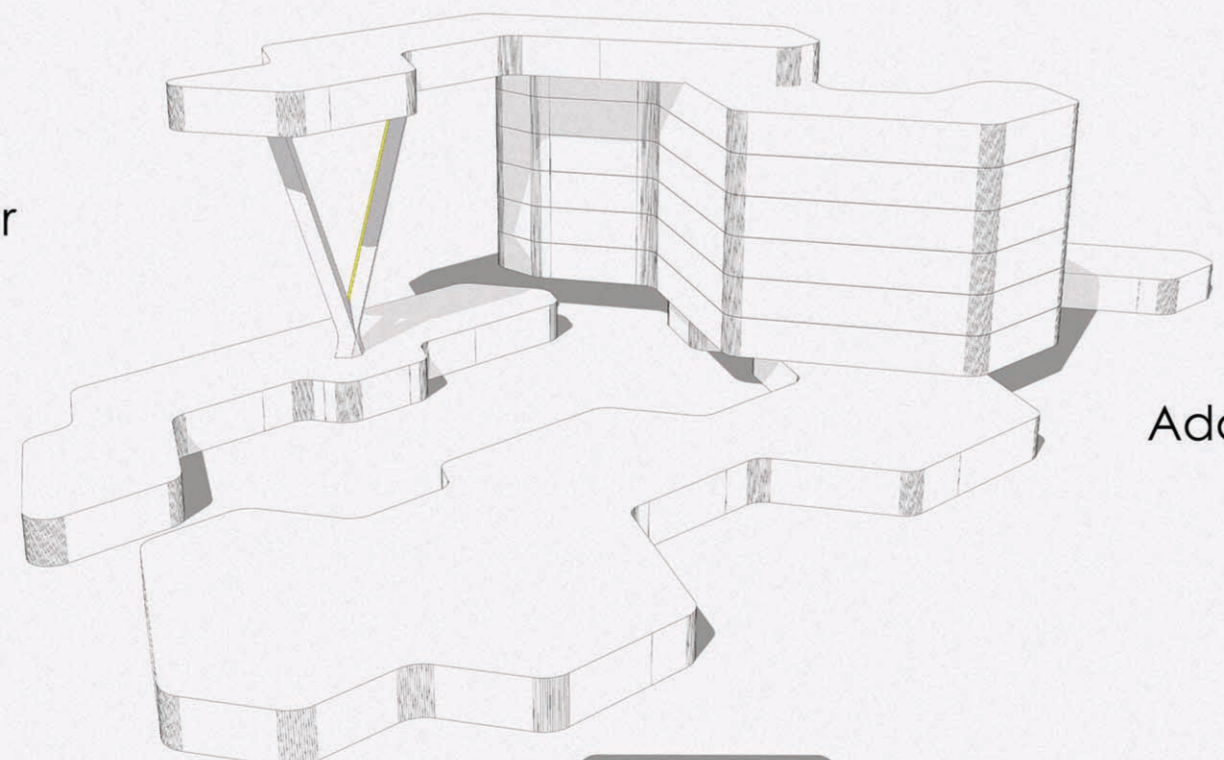
Dividing the form into 3 different functional spaces



Overlaying spaces



Duplicate each form according to the spaces needed

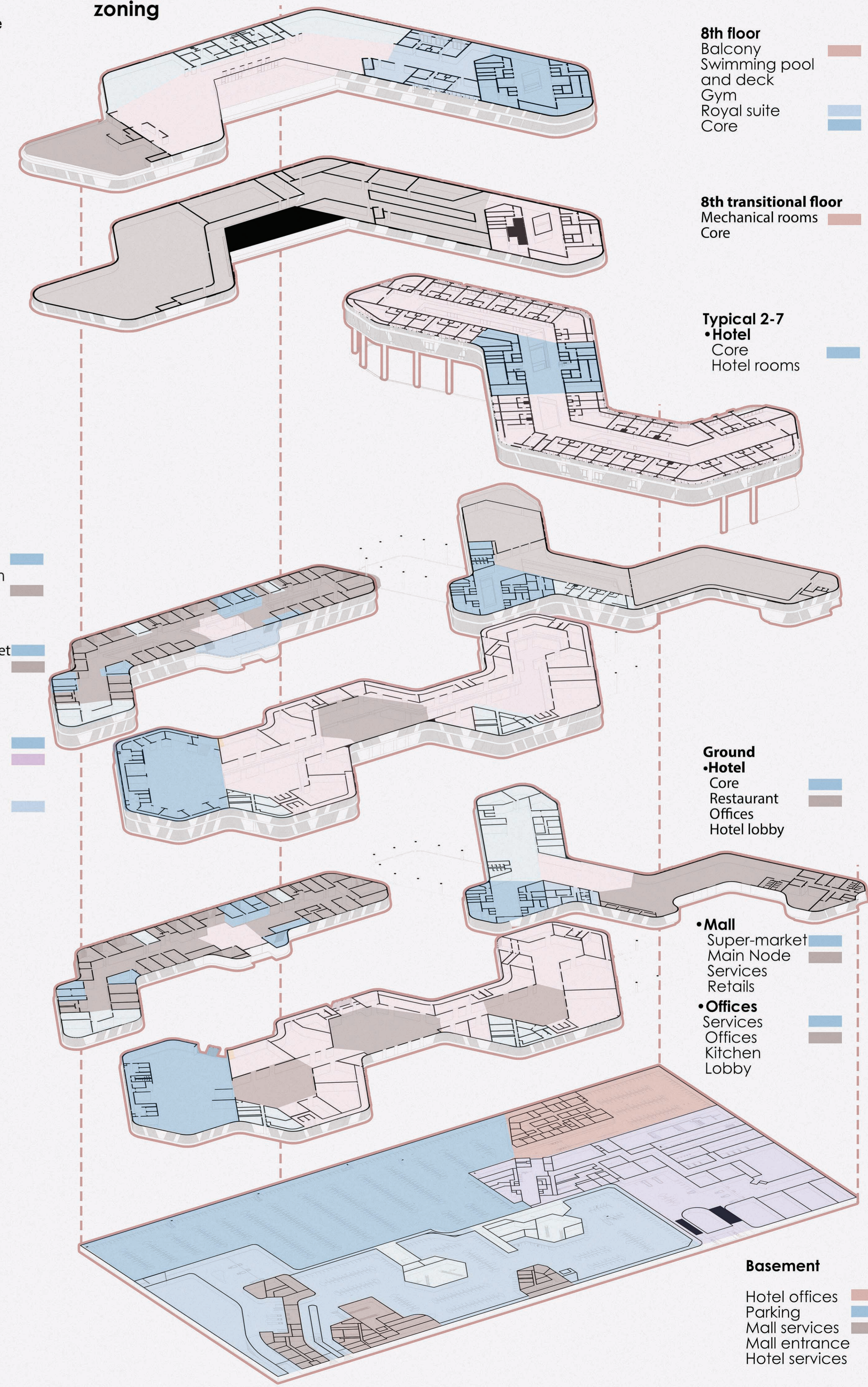


Add structural Support



Created a hierarchy of hexagons

zoning



8th floor
 Balcony
 Swimming pool and deck
 Gym
 Royal suite
 Core

8th transitional floor
 Mechanical rooms
 Core

Typical 2-7
 •Hotel
 Core
 Hotel rooms

First
 •Hotel
 Core
 Bride room
 Wedding hall

•Mall
 Hyper market
 Lobby
 Services
 Retail

•Offices
 Services
 Offices
 Kitchen
 Lobby
 Balcony

Ground
 •Hotel
 Core
 Restaurant
 Offices
 Hotel lobby

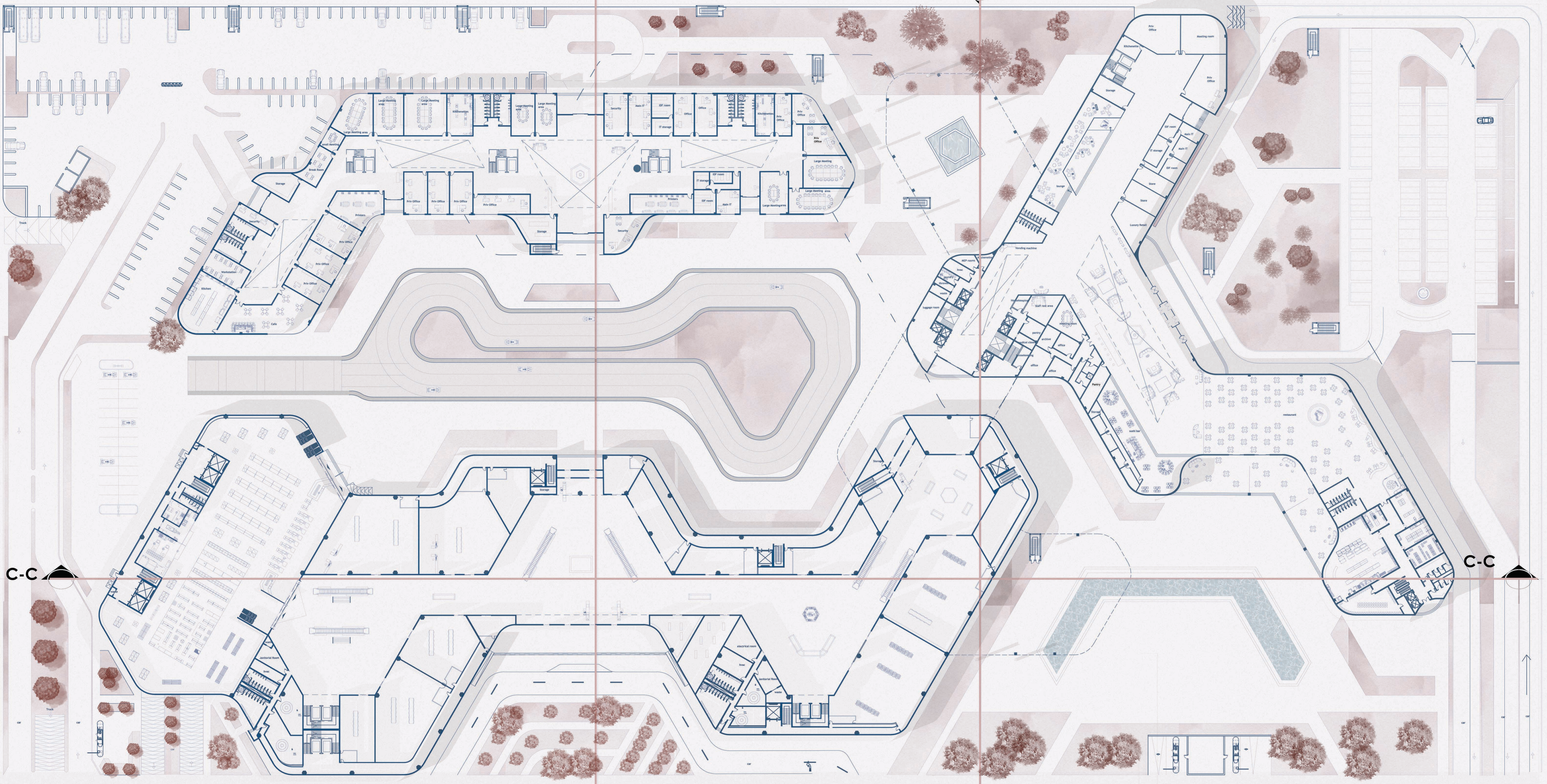
•Mall
 Super-market
 Main Node
 Services
 Retail

•Offices
 Services
 Offices
 Kitchen
 Lobby

Basement
 Hotel offices
 Parking
 Mall services
 Mall entrance
 Hotel services

A-A

B-B



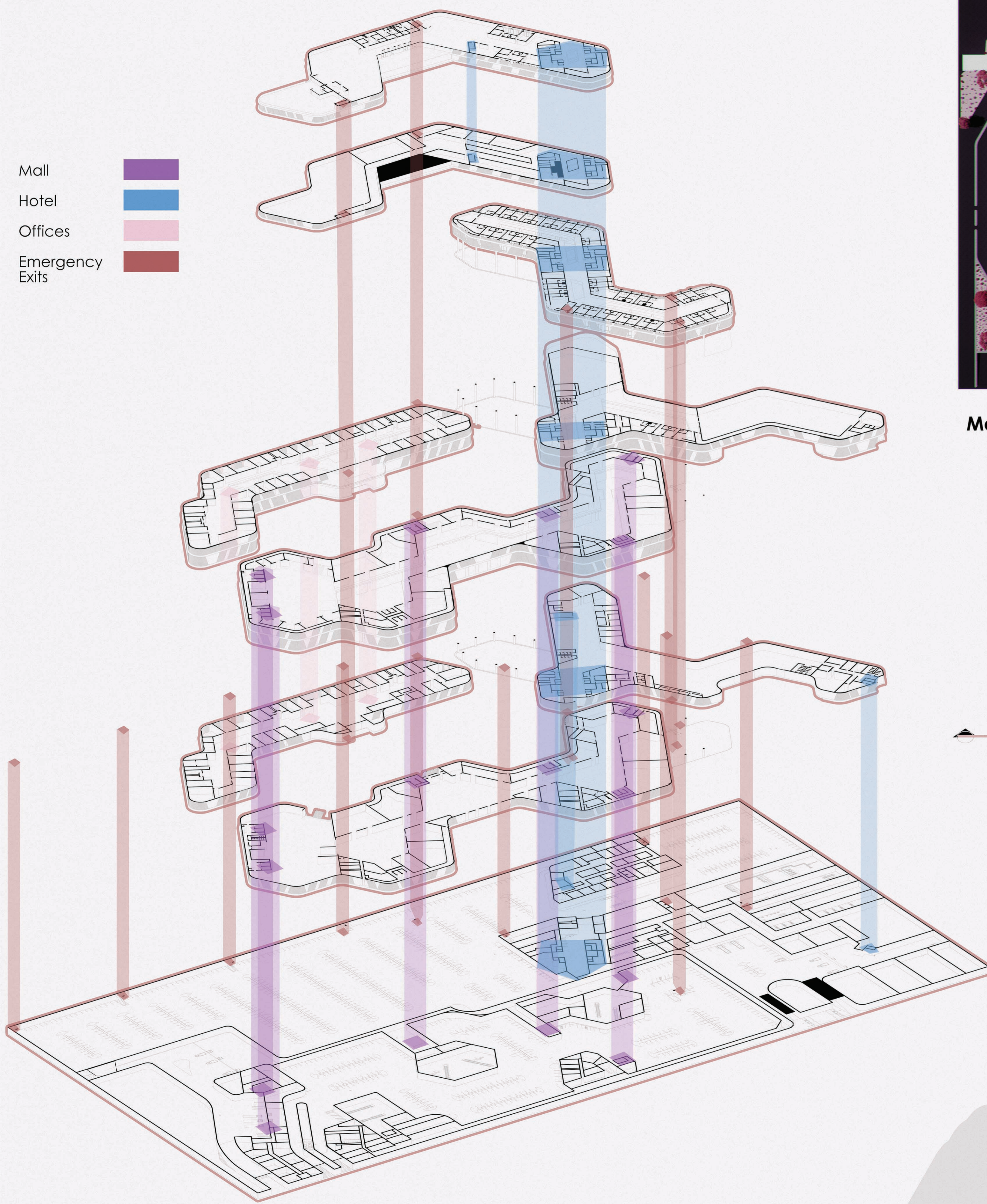
C-C

C-C

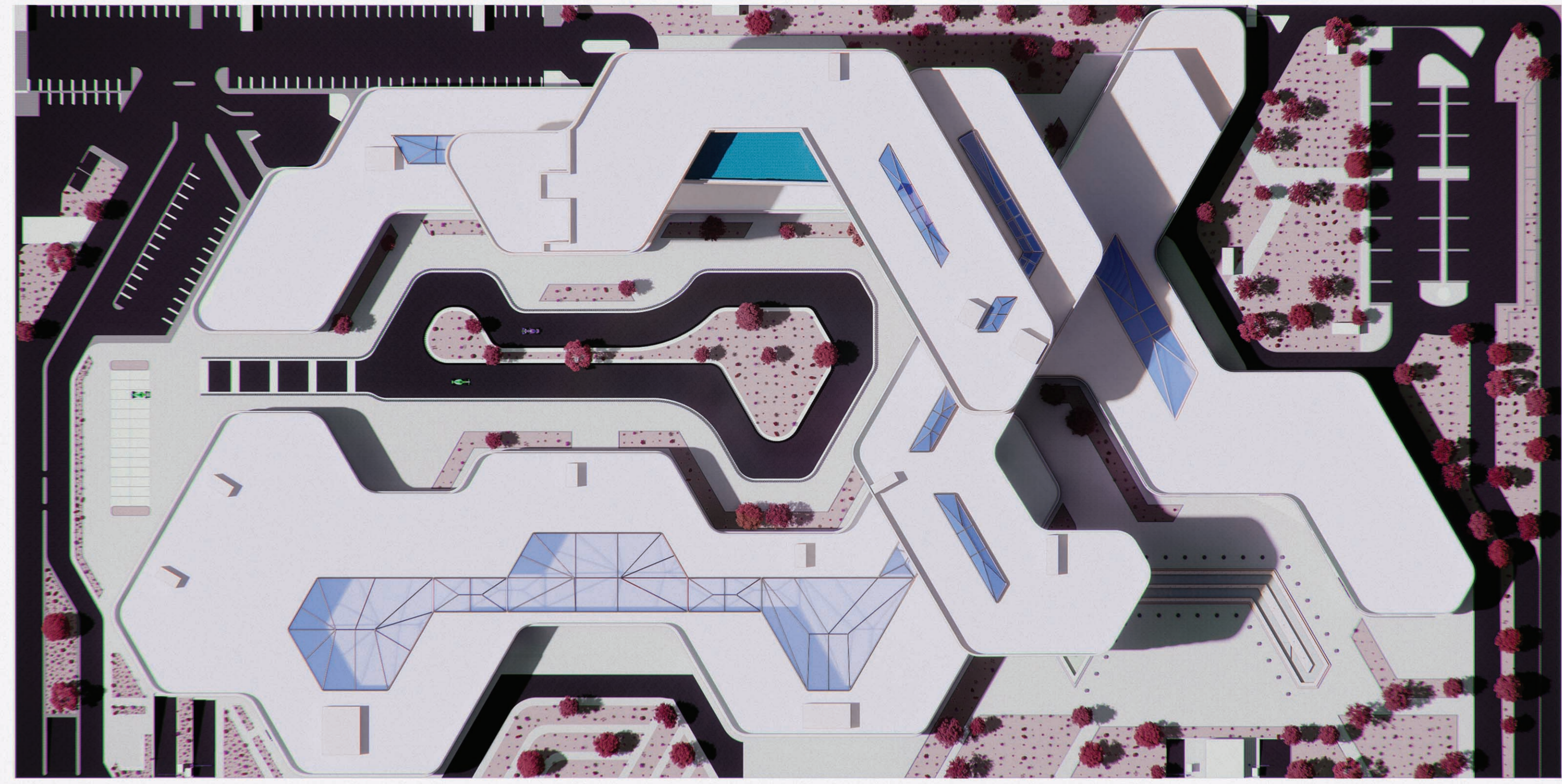
A-A

B-B

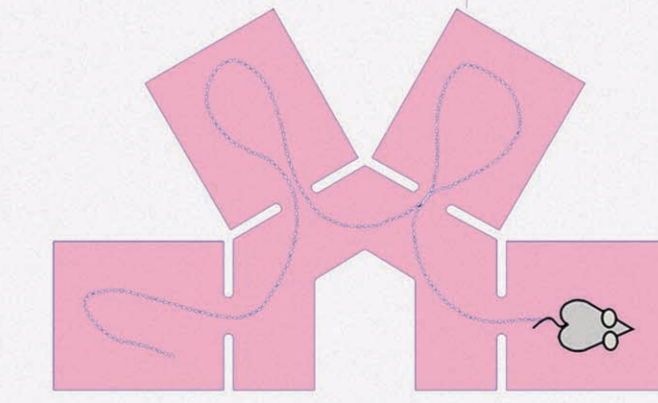
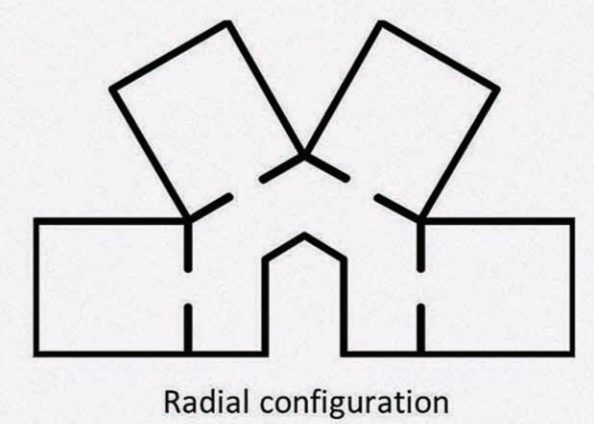
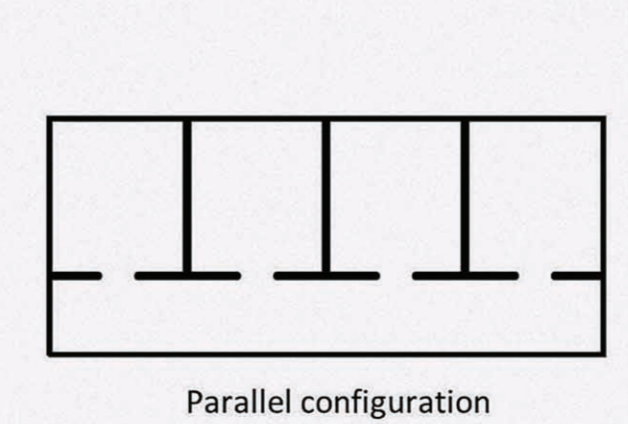
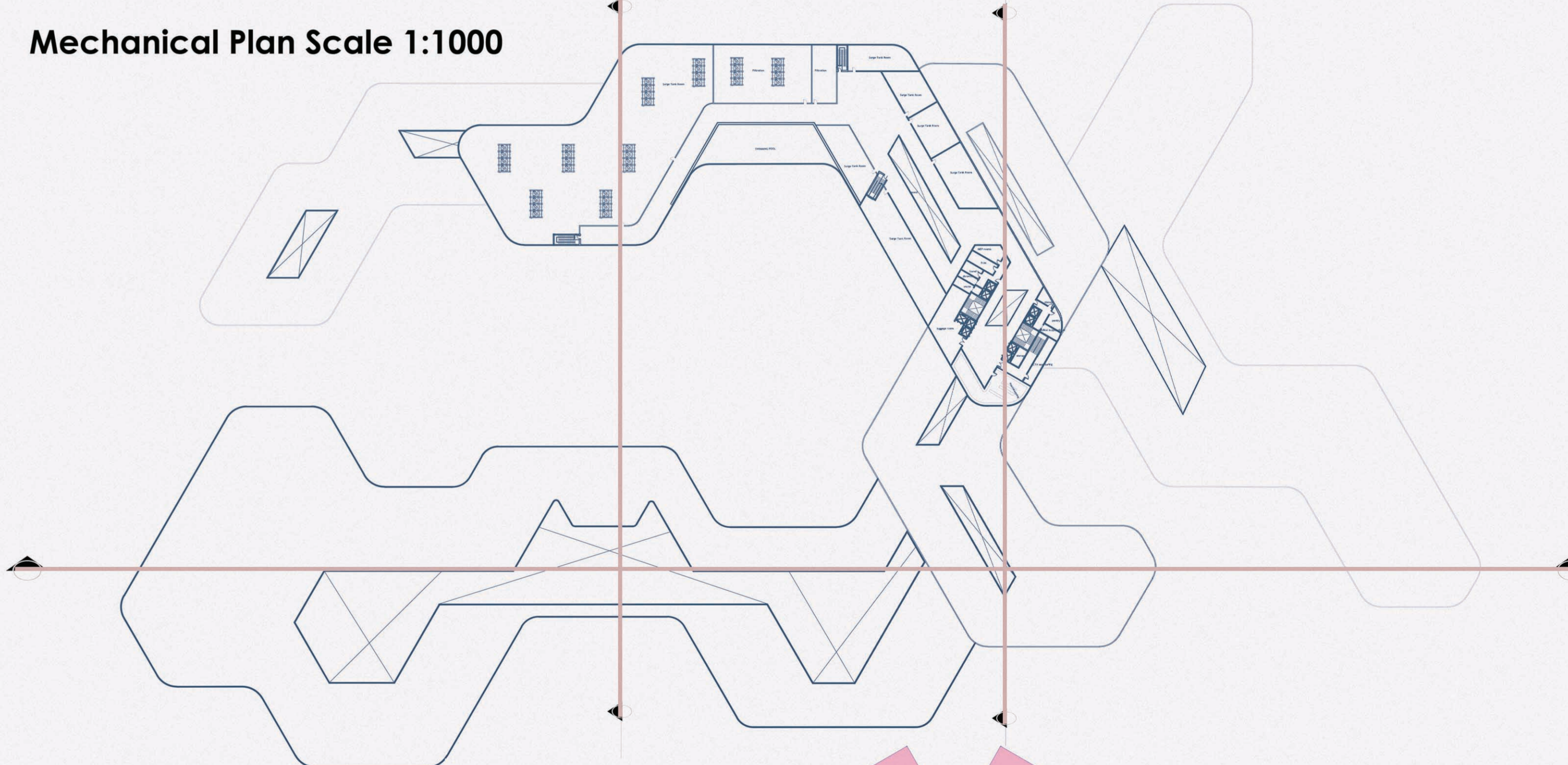
Circulation



Layout Scale 1:1000



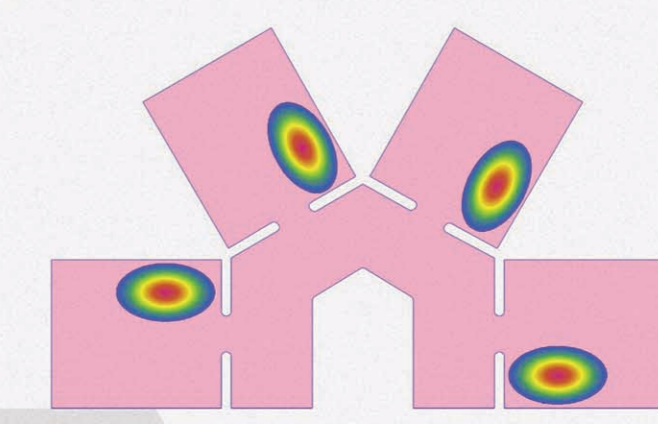
Mechanical Plan Scale 1:1000



Apparatus
Maze with four compartments connected by an alleyway



Normal Animals
Have place cells with unique fields across compartments

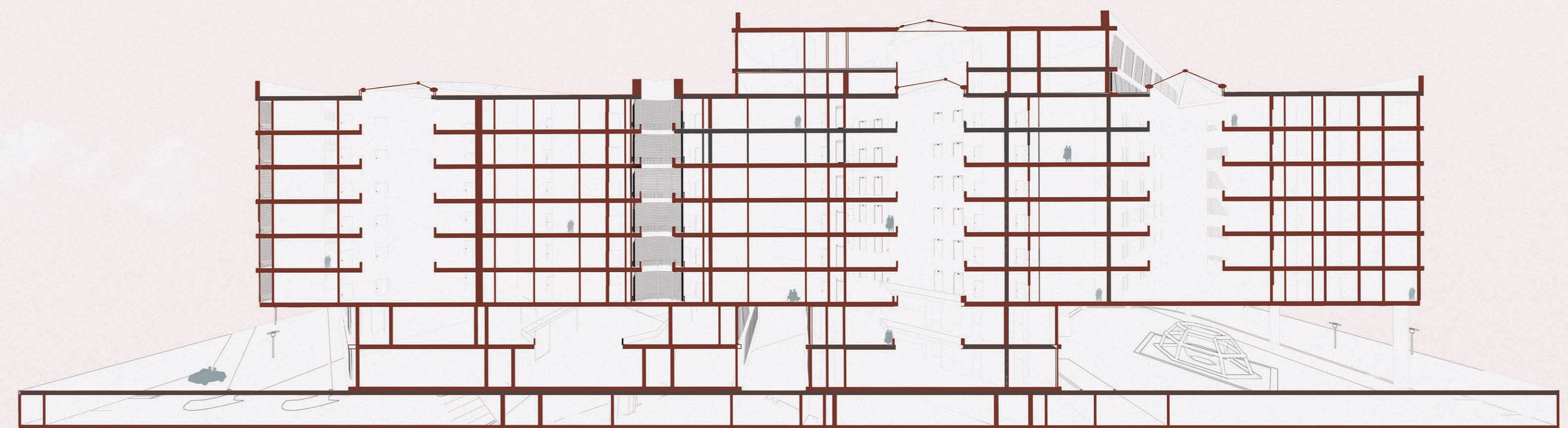
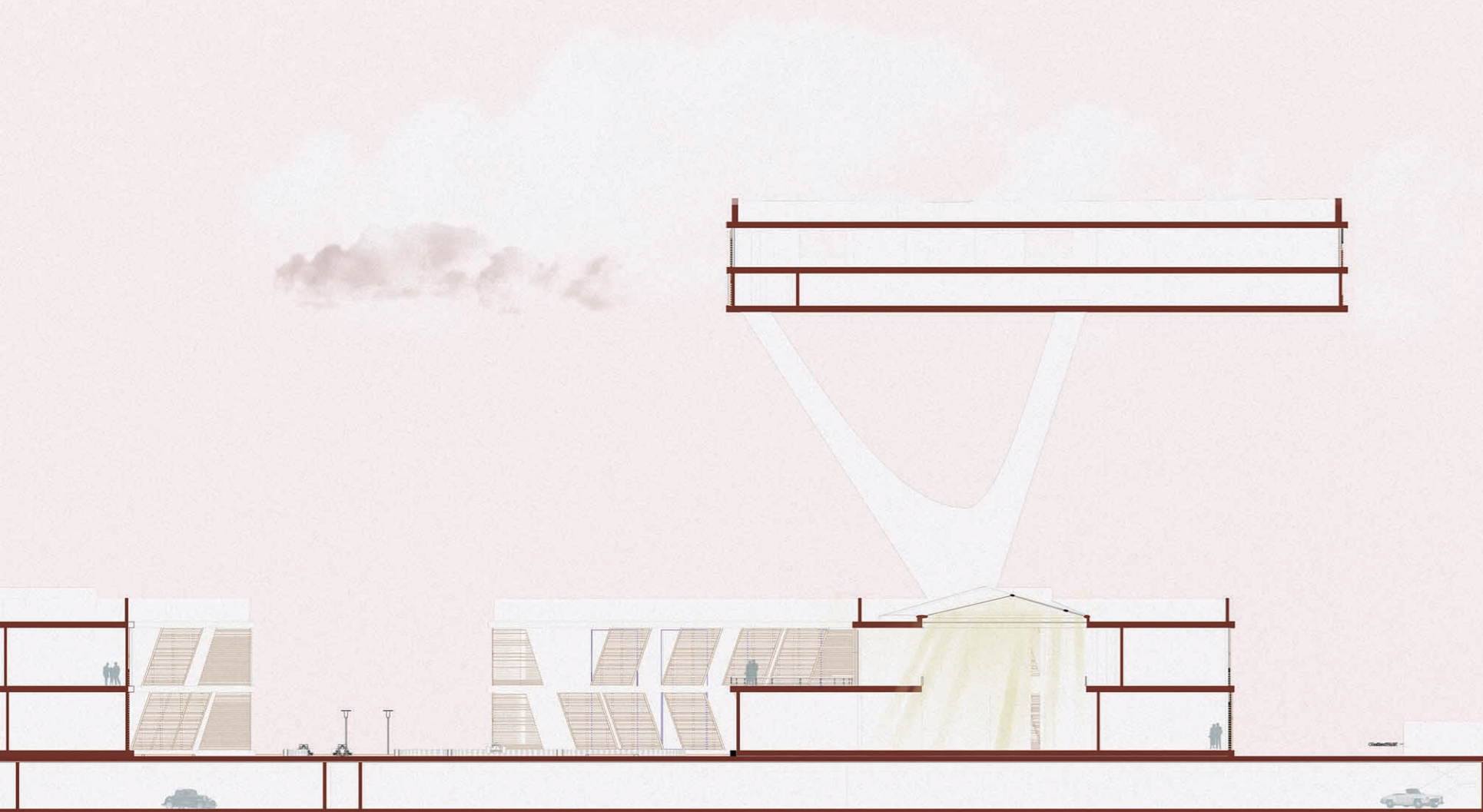
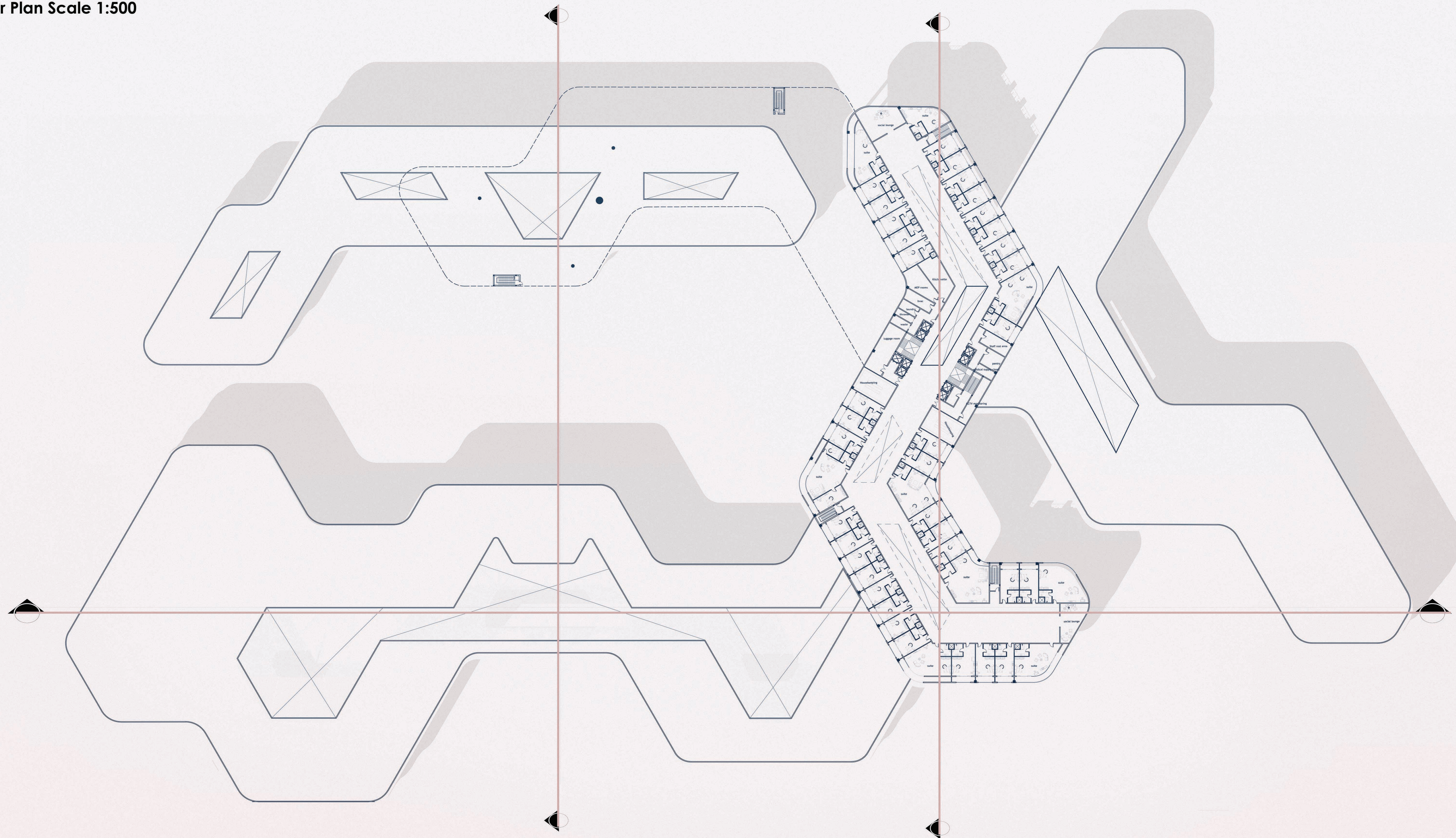


Animals with an impaired head direction system
Show repetition of place fields, indicating that head direction cells provide a sense of direction which allows disambiguation of compartments that face in different directions

Sham

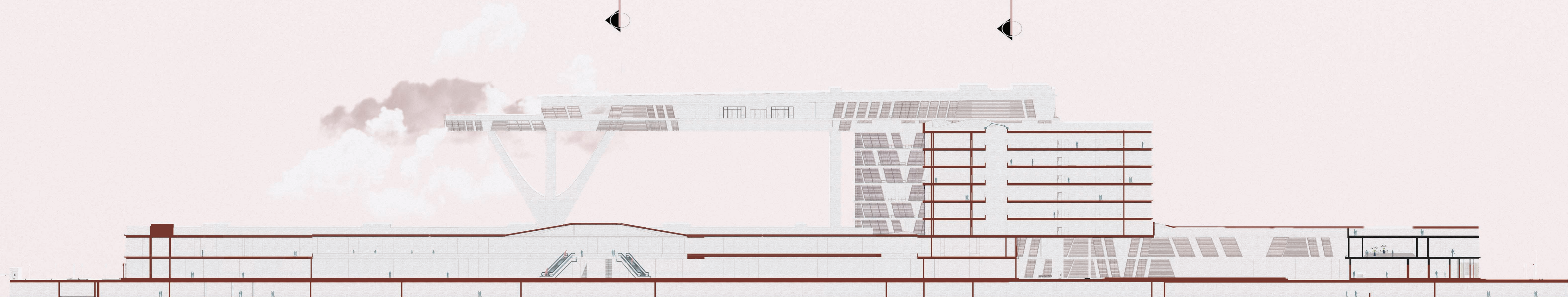
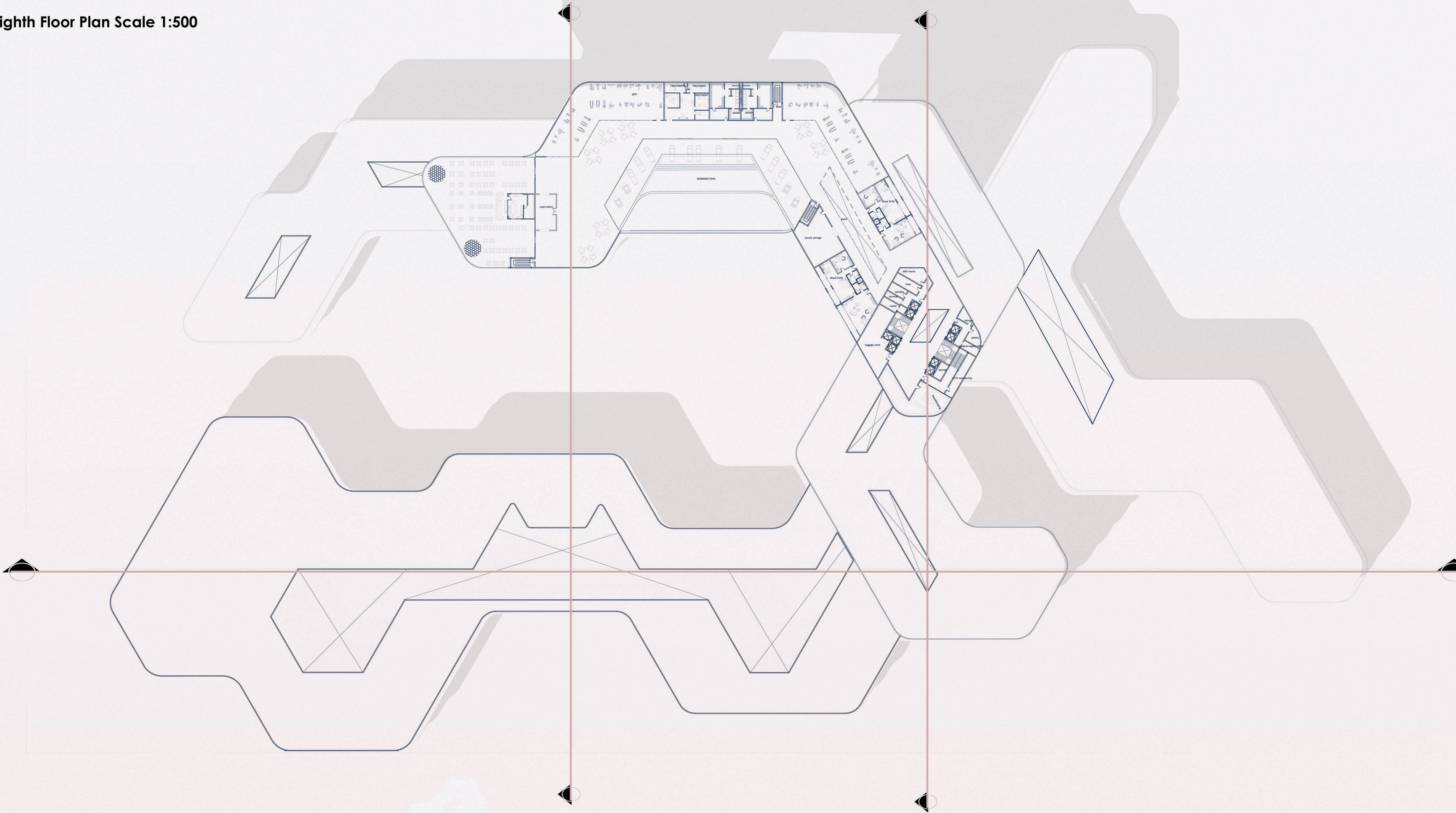
LMN Lesion

Typical Floor Plan Scale 1:500



Section B-B Scale 1:500

Eighth Floor Plan Scale 1:500



Section C-C Scale 1:500

