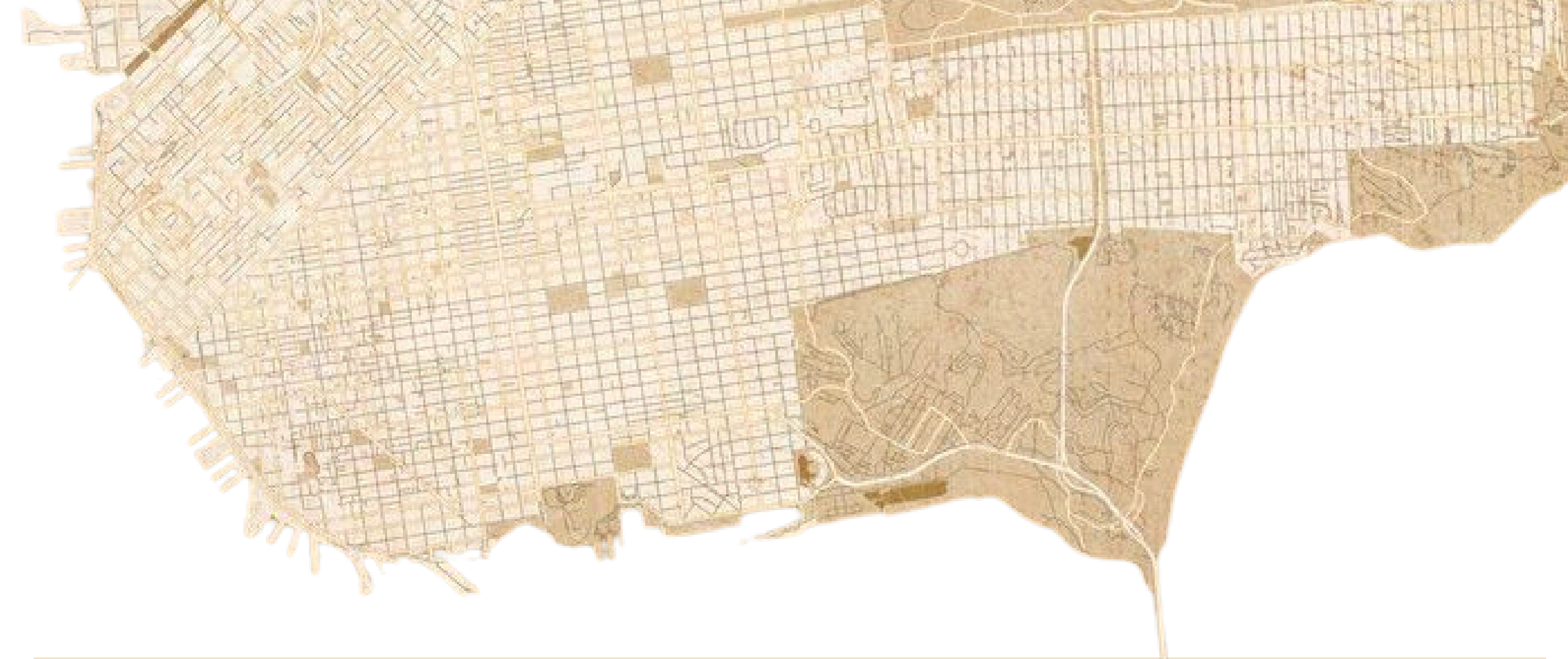
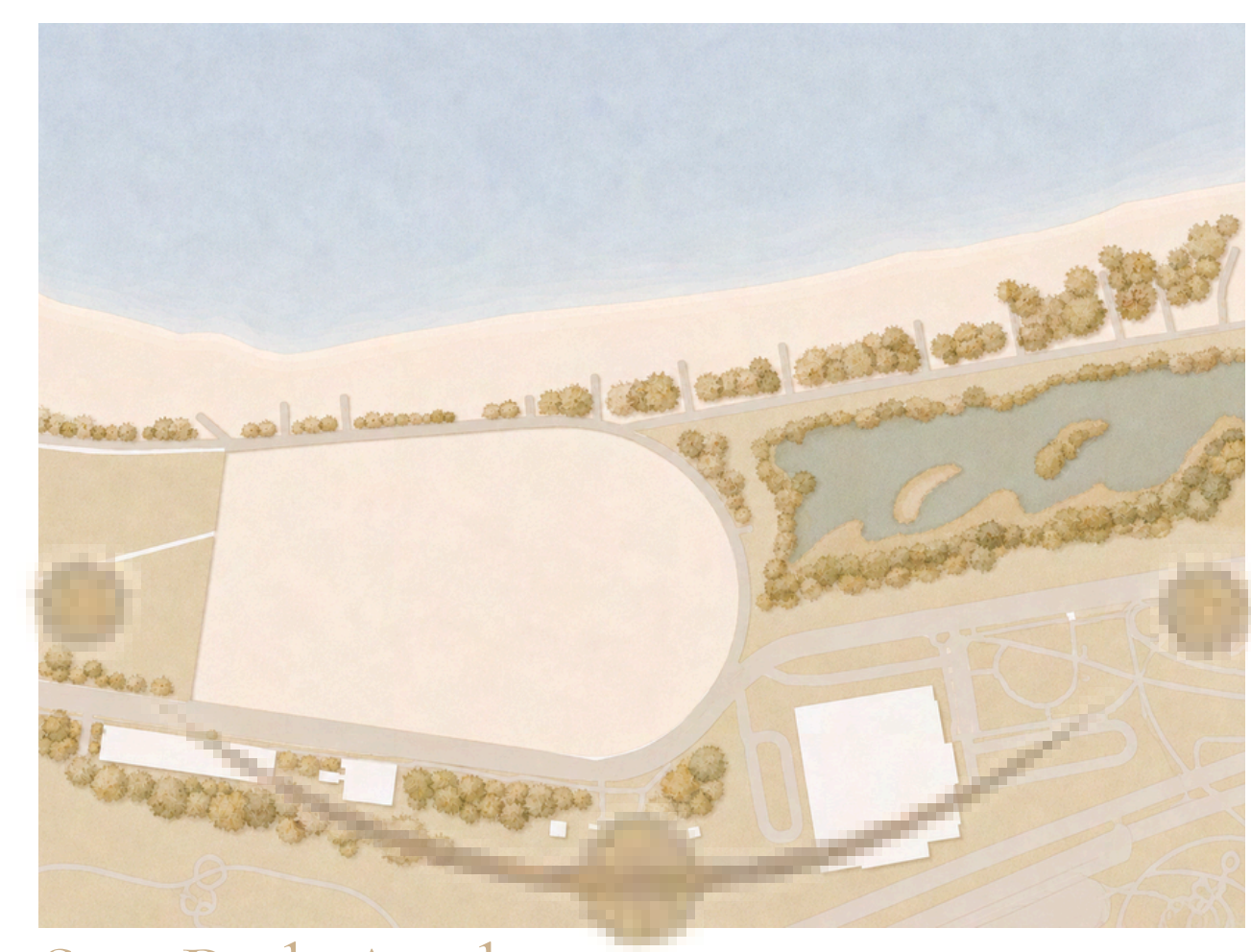


SOLEA

Proposes an elevated timber network where coastal life continues above a changing and vulnerable ground. The project transforms the boardwalk into more than a path: it becomes a safe spine, a social landscape, and a recovery infrastructure. Circular nodes create moments of gathering, rest, observation and shelter, while the wetland below remains protected and alive. Between water, timber and light, the project imagines architecture as a calm refuge for both everyday life and post-disaster healing.



SITE ANALYSIS



Sun Path Analysis

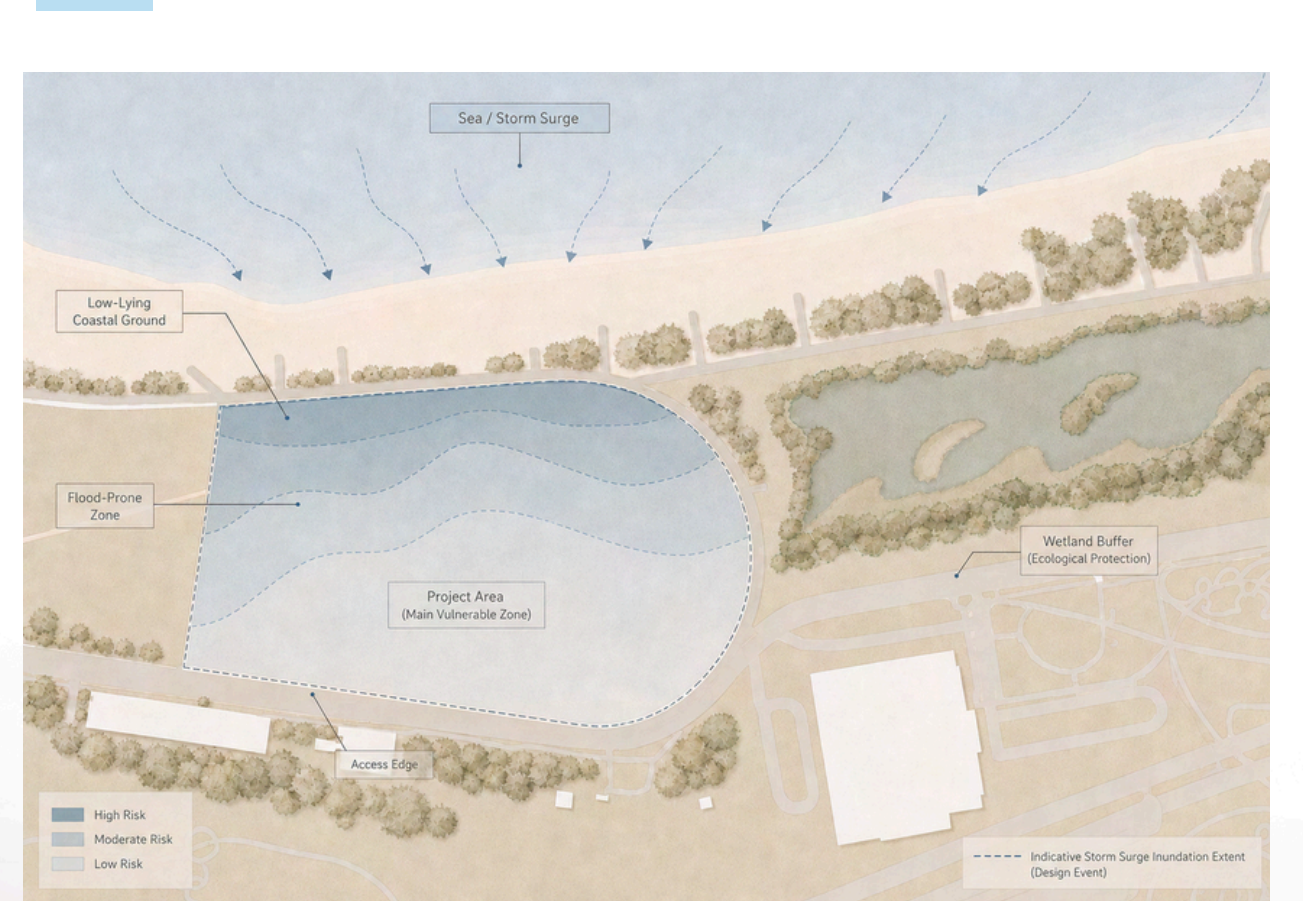


Wind Analysis



Circulation Analysis

- Tertiary Road
- Pedestrian Path



Coastal Flood Risk Analysis



Wetland/Ecological Sensitivity Analysis

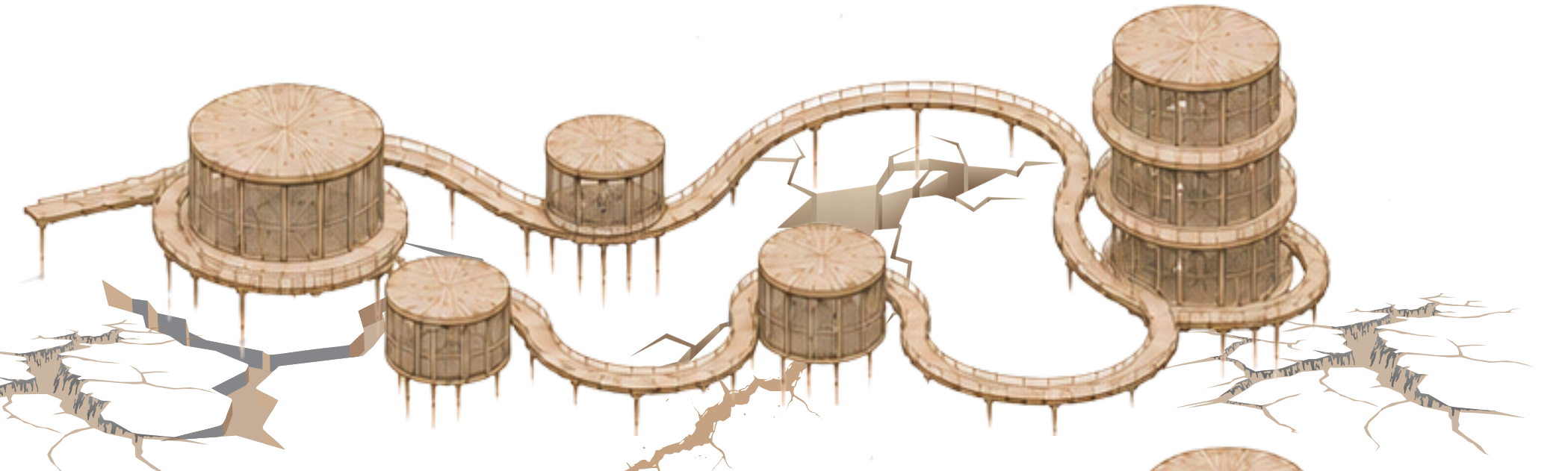
- Bird Habitat
- Native Reeds
- Water Flow
- Controlled Access



ADAPTATION SEQUENCE

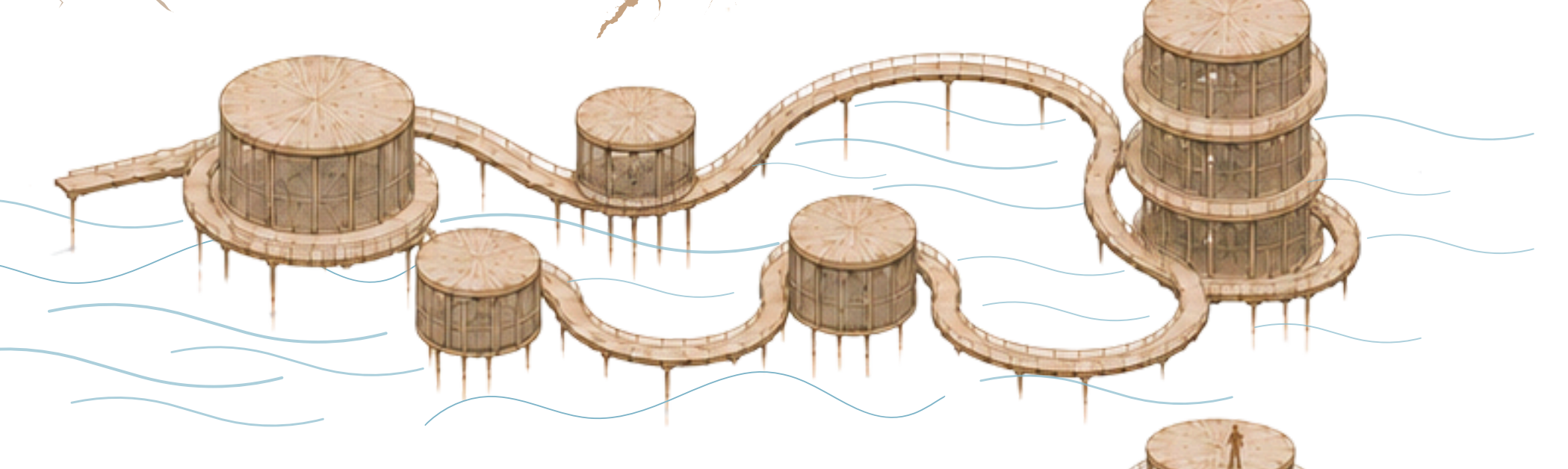
ADAPTATION 2 EARTHQUAKE RESPONSE

In earthquakes, the system transforms—circular nodes become relief stations, providing shelter and support for the community.



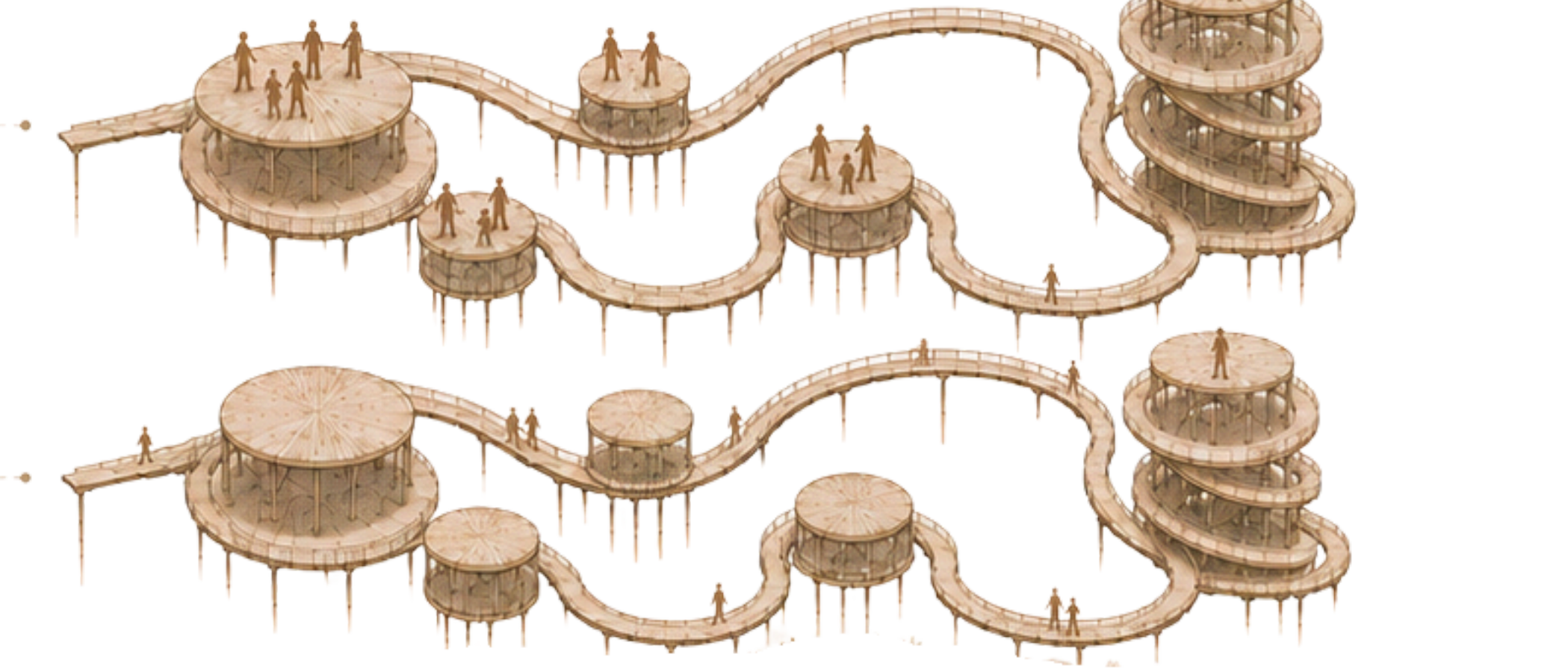
ADAPTATION 1 FLOOD RESPONSE

During floods, water rises through the landscape while the elevated network remains safe, dry and fully accessible.



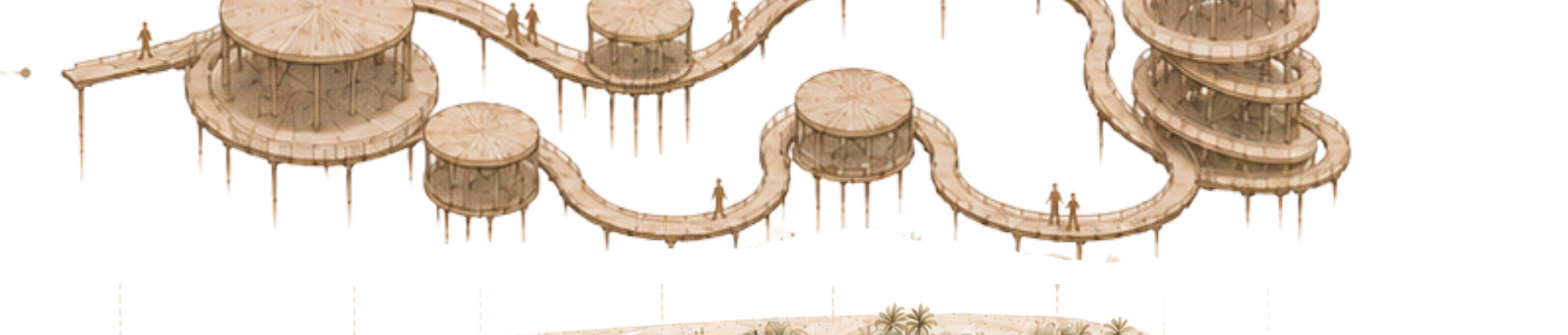
GATHER

Circular nodes become places for people meet, rest and connect—supporting everyday community life.



LIFT THE MOVEMENT

The elevated timber network rises lightly above the landscape, minimizing impact while enabling uninterrupted movement.



READ THE SITE

Understanding the land and water patterns, ecological paths, ponds and wetlands at ground level.



ONE NETWORK, TWO CONDITIONS



- WALK
- REST
- OBSERVE
- LEARN



- GATHER
- INFORM



- RECOVERY
- AID

In daily life, the network becomes a coastal promenade for walking, resting and observing. During flood or earthquake, the same elevated system transforms into a safe route for assembly, aid, orientation and recovery.



SOLEA

ATMOSPHERE & SPATIAL EXPERIENCE

Elevated movement, circular pauses and a resilient coastal landscape

The project is experienced as a continuous timber journey above a sensitive coastal ground. The elevated boardwalk connects circular nodes, water gardens and the observation tower, creating spaces for walking, pausing, gathering and observing. In daily life, the system offers a calm public landscape; after disaster, the same network becomes a safe infrastructure for assembly, aid, orientation and recovery.



DAILY LIFE SCENARIO

A PLACE FOR WALKING, RESTING AND OBSERVING.



COMMUNITY GATHERING



WATER GARDEN VIEW



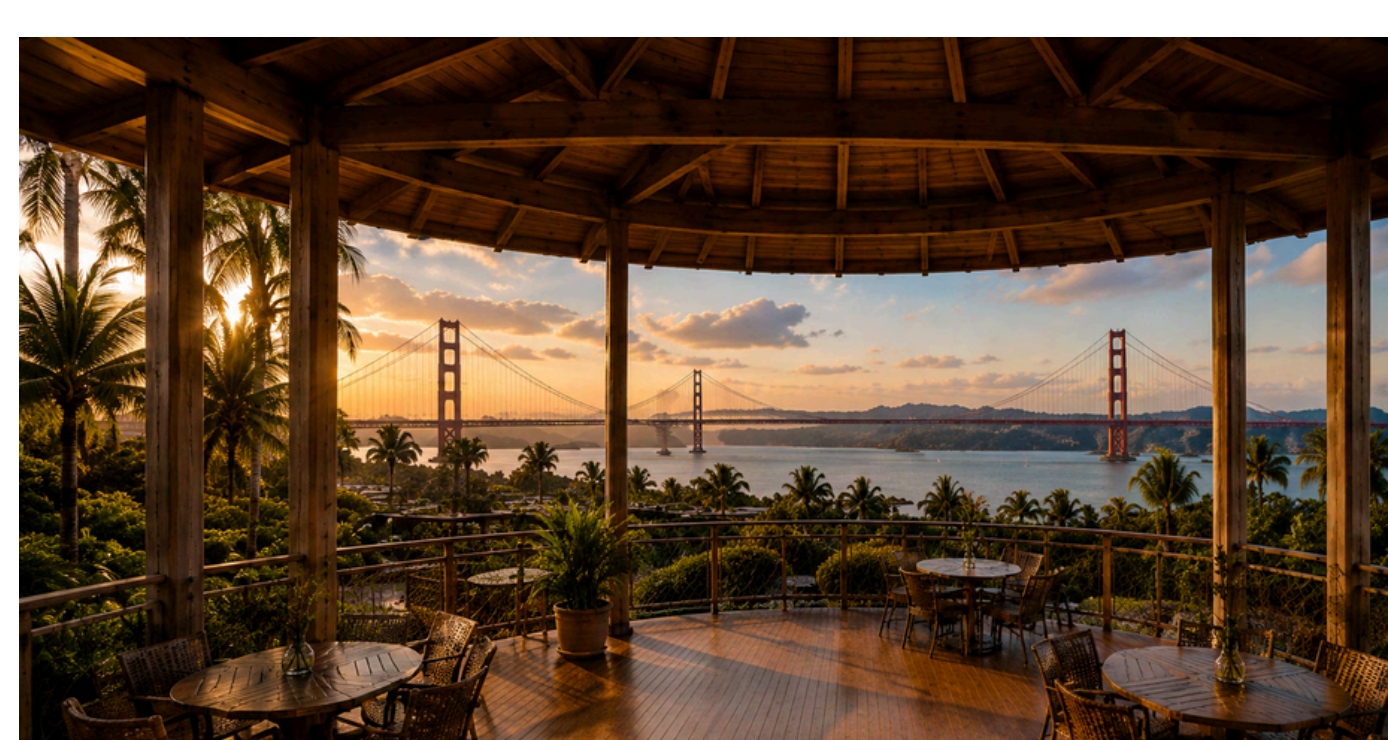
GROUND ECOLOGICAL PATH



OBSERVATION TOWER



WATER GARDEN EXPERIENCE



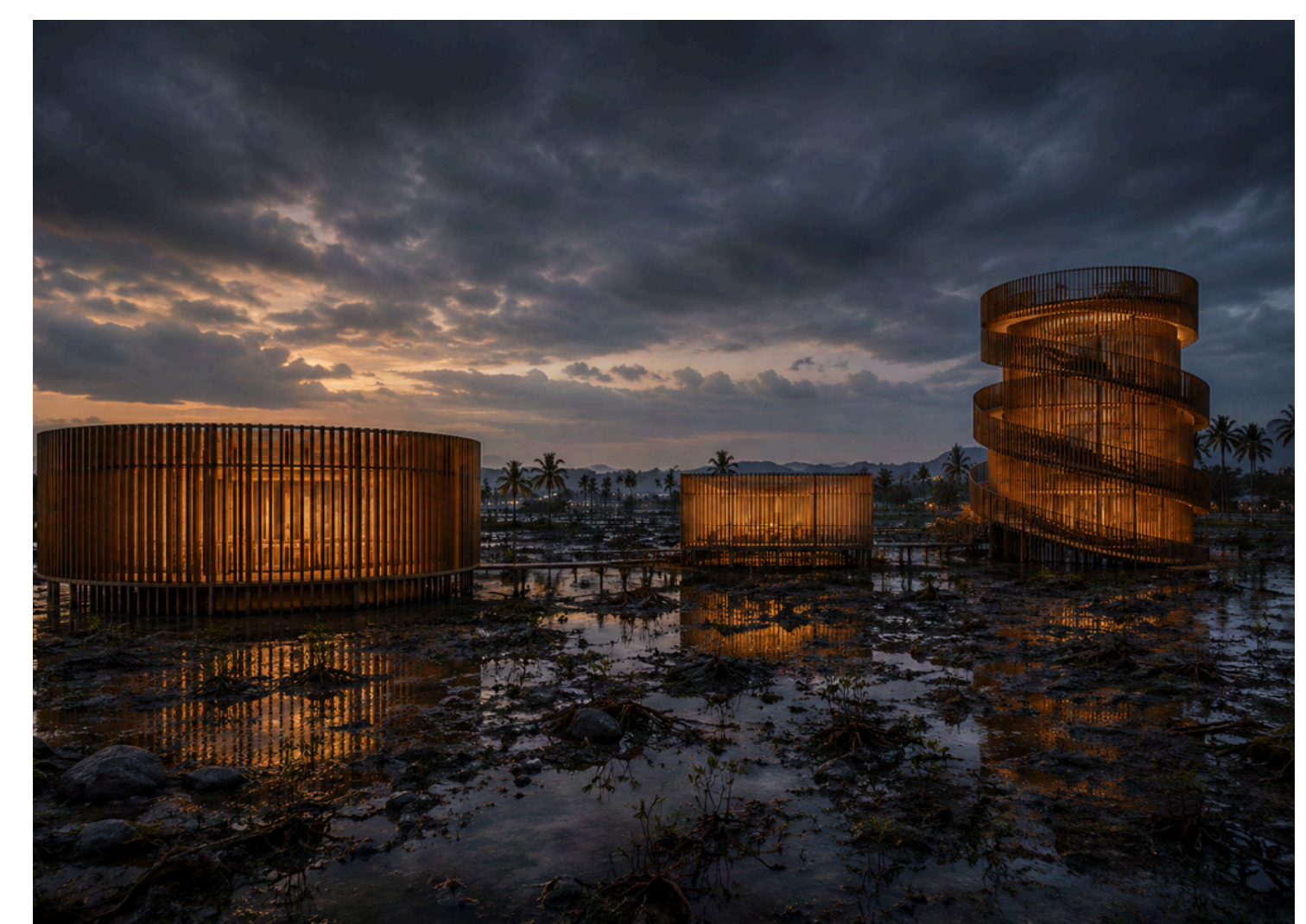
SHELTERED PAUSE

POST-DISASTER RECOVERY SCENARIO

AN ELEVATED NETWORK FOR AID, SHELTER AND ORIENTATION.



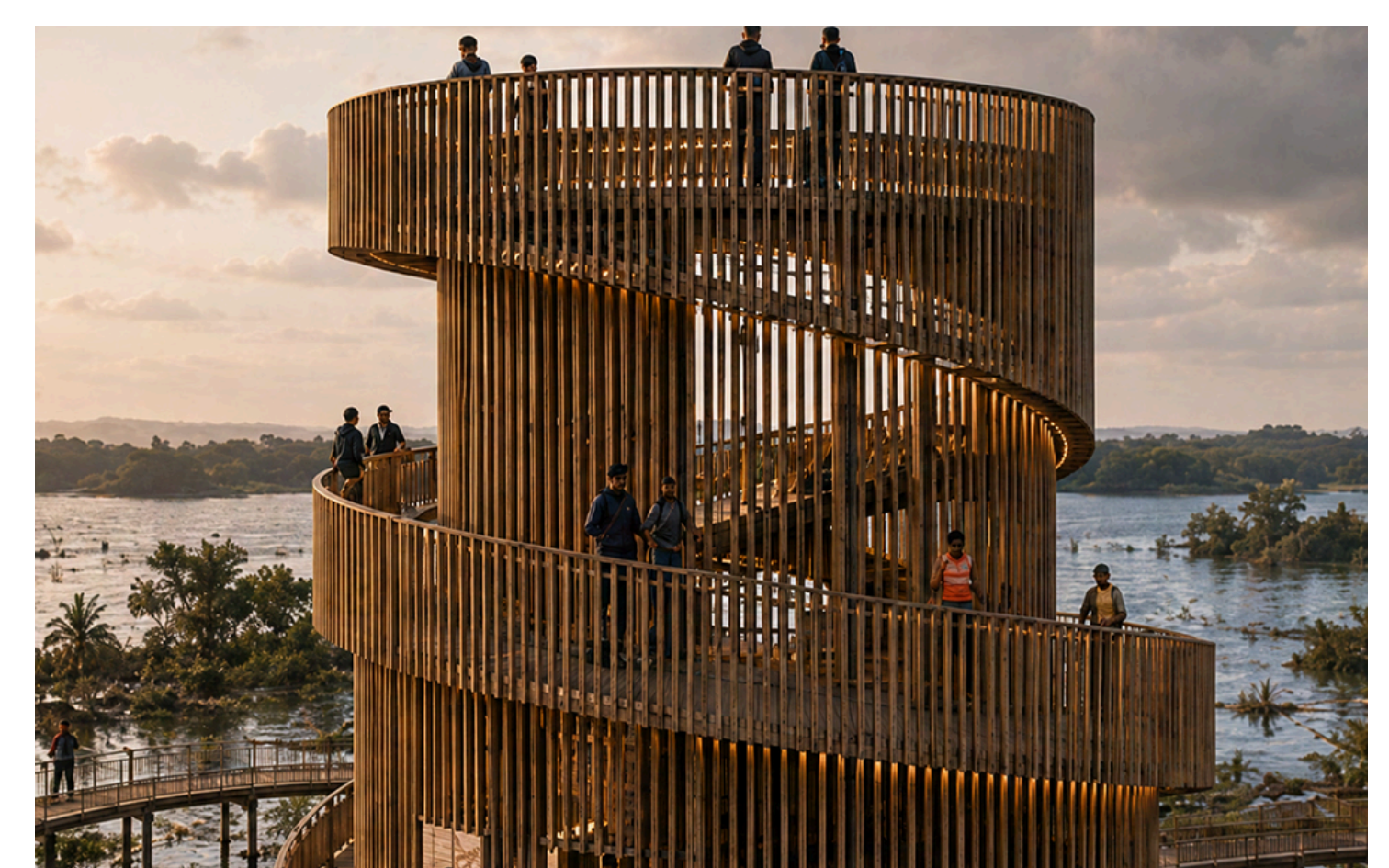
EMERGENCY ASSEMBLY



POST-DISASTER RECOVERY LANDSCAPE



FLOODED GROUND LAYER



OBSERVATION & COORDINATION



RECOVERY NETWORK



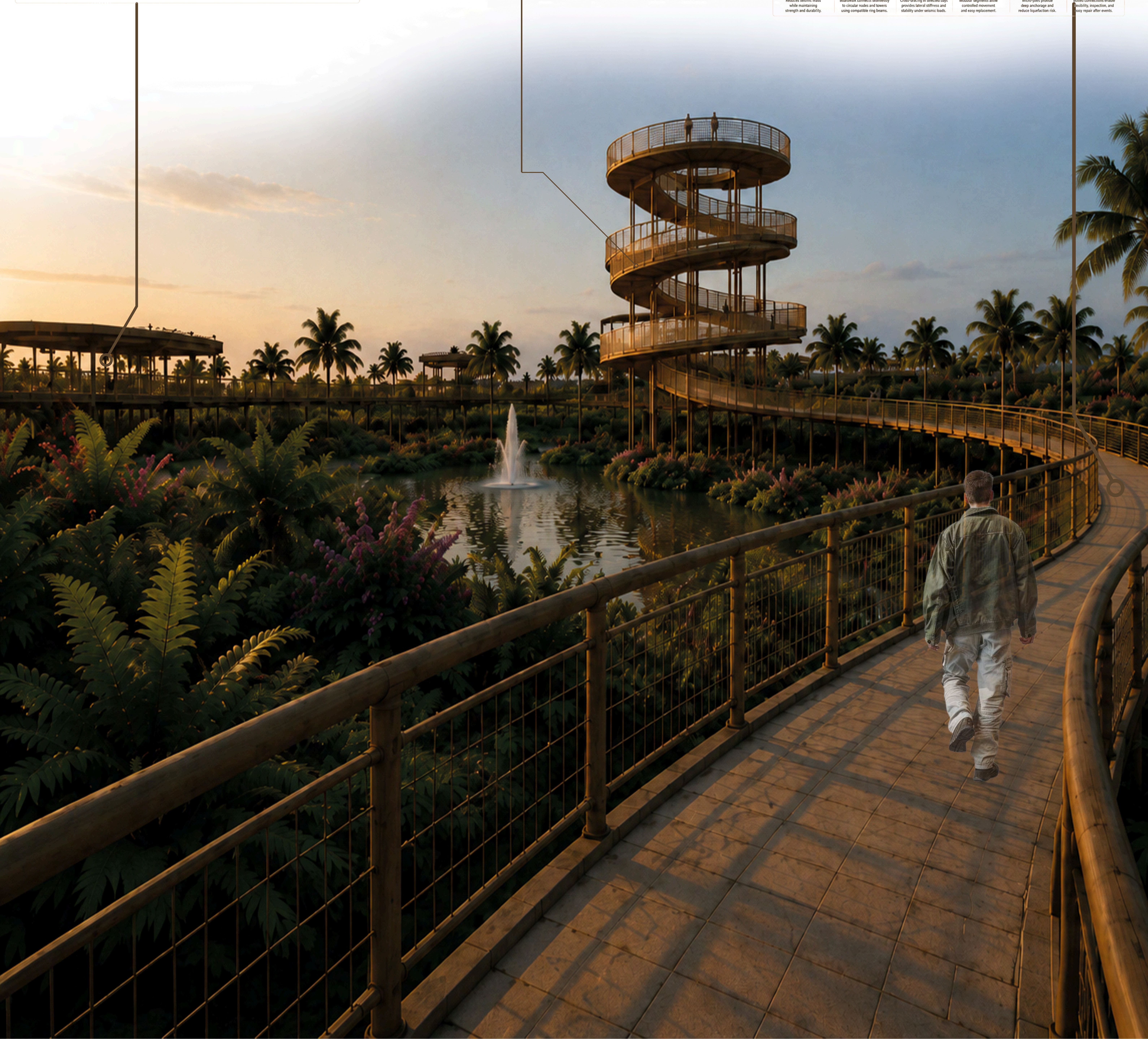
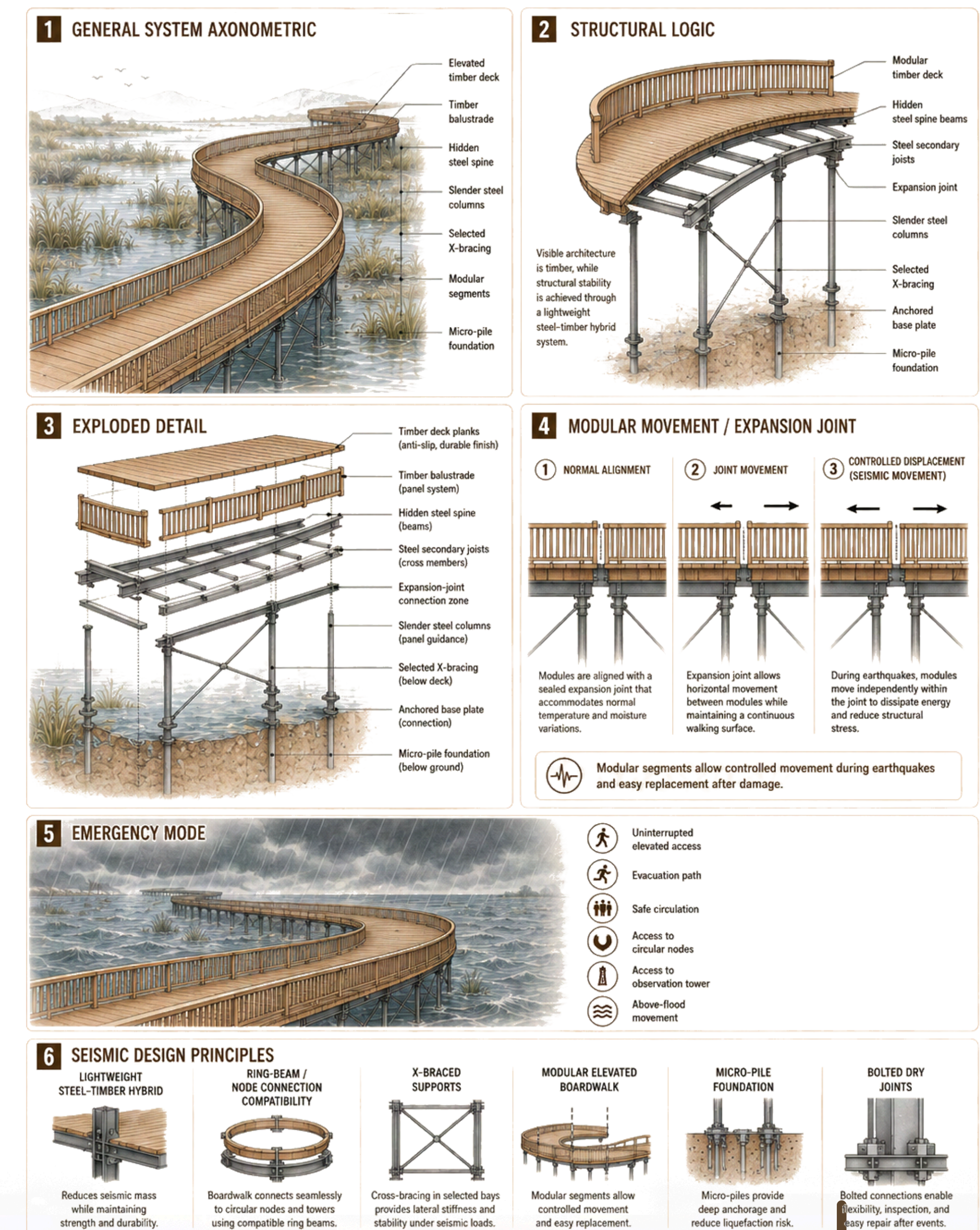
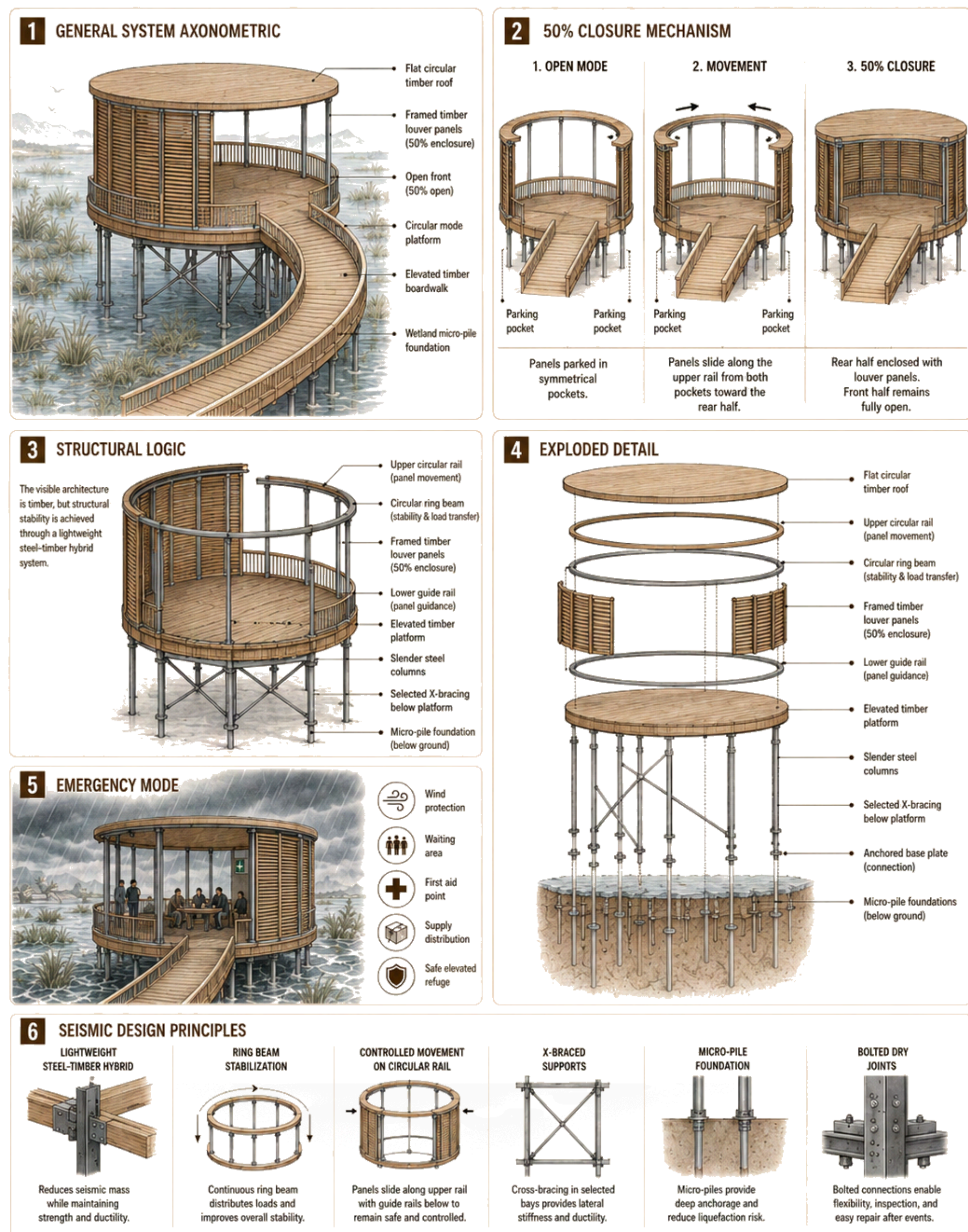
RECOVERY INTERIOR



SOLEA

TECHNICAL SYSTEM & RESILIENCE

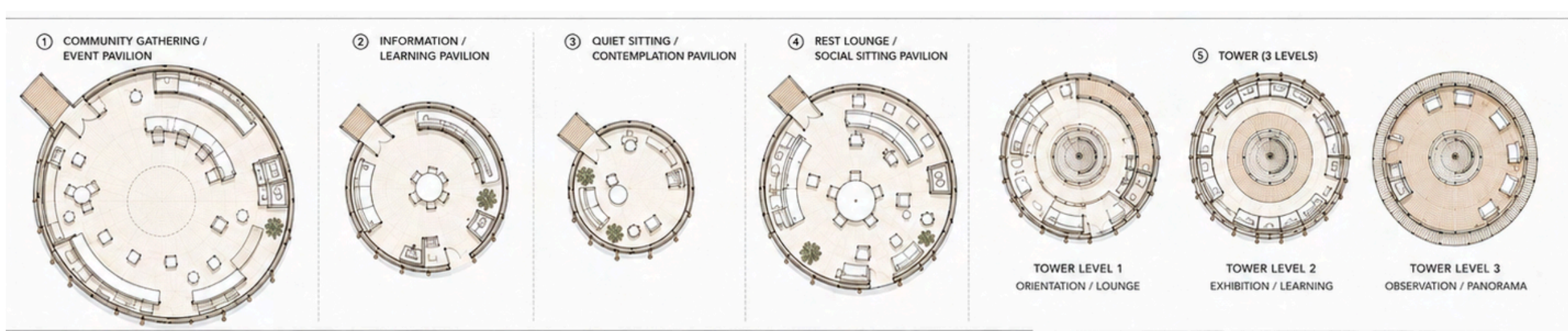
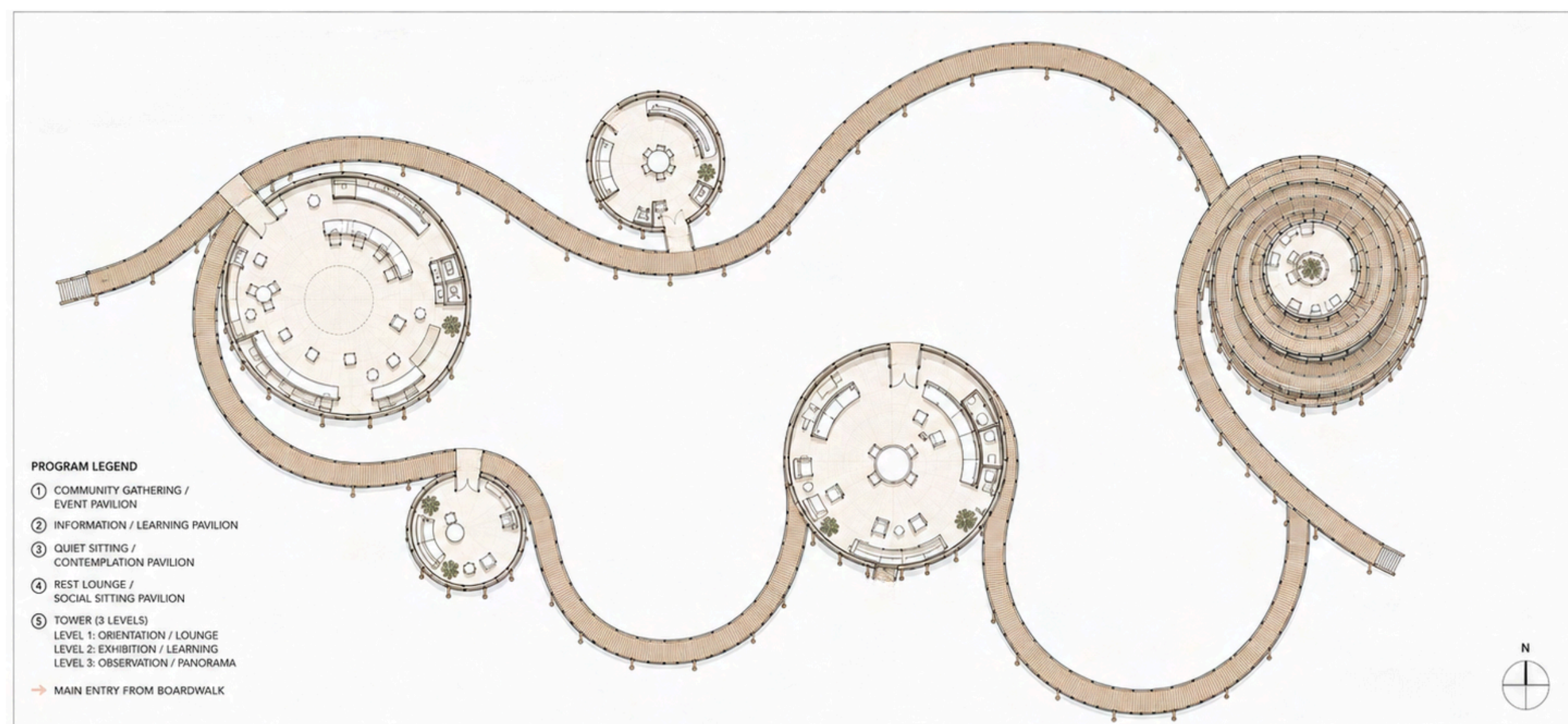
Elevated timber structure, adaptive circular nodes and a resilient tower system for daily life and disaster response.



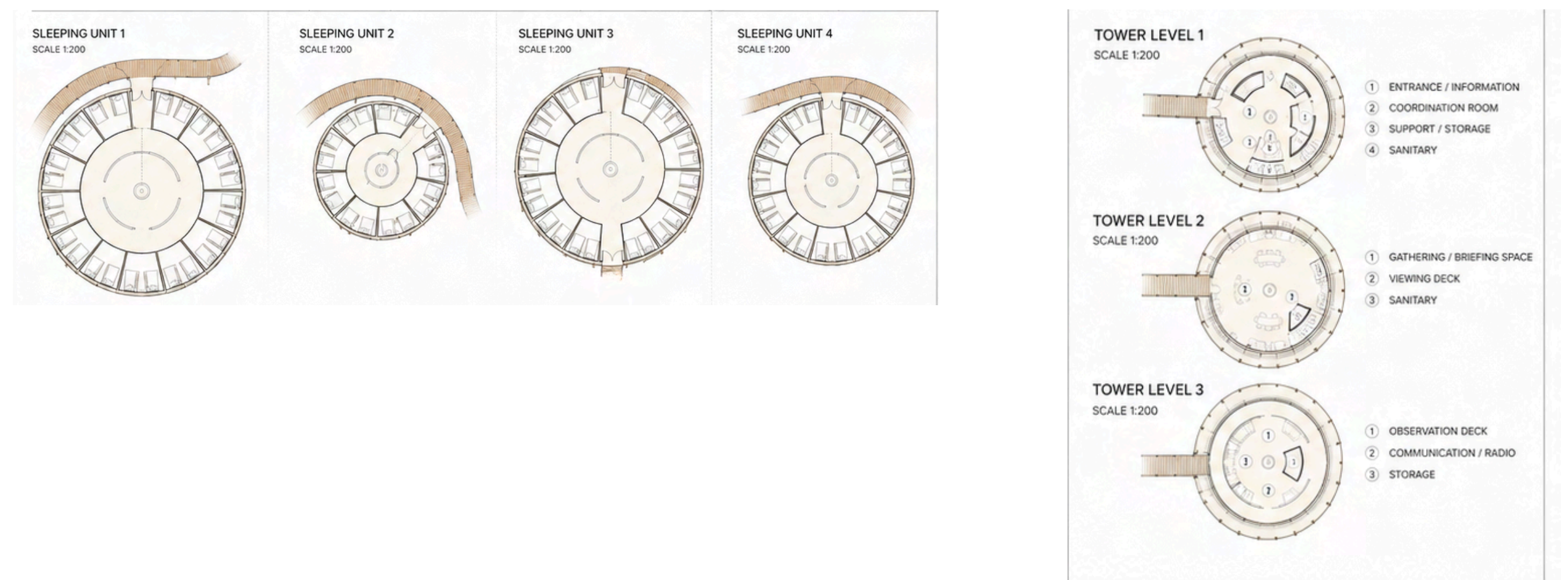
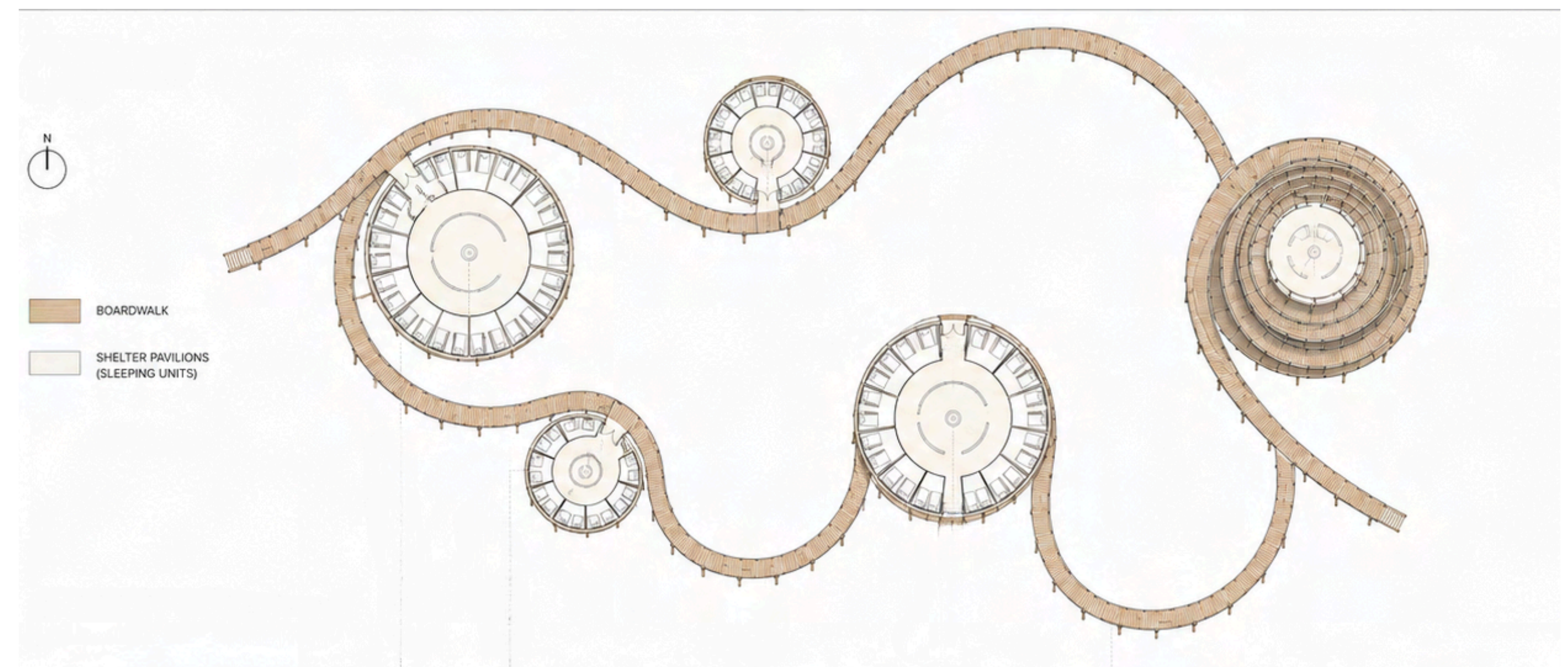


Site Plan 1/1000

PRE-DISASTER PLAN



POST-DISASTER PLAN



Section / Elevation