

Beyond Display

National Museum of Natural History, India



NATIONAL MUSEUM OF NATURAL HISTORY, NEW DELHI, INDIA

This project explores experiential architecture in museums, where space itself becomes a medium of storytelling. Moving beyond the conventional focus on artefacts, the design creates an immersive journey through light, scale, movement, and spatial transitions, allowing visitors to engage with the narrative through experience.

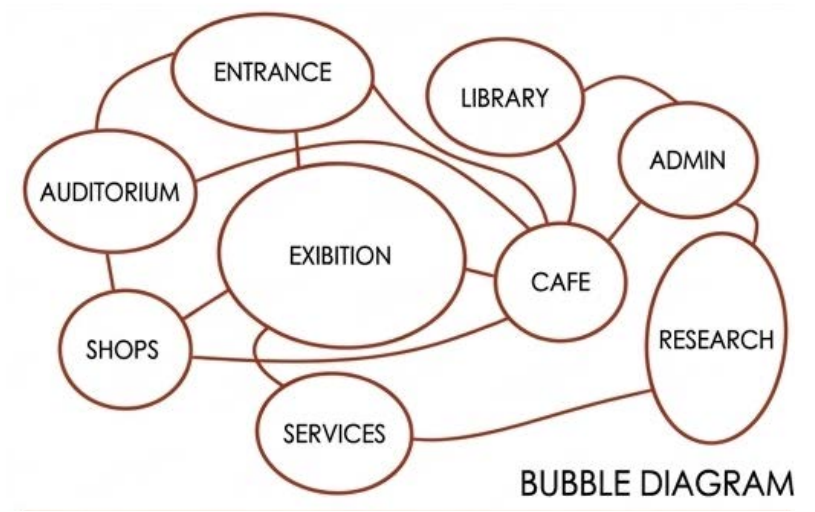
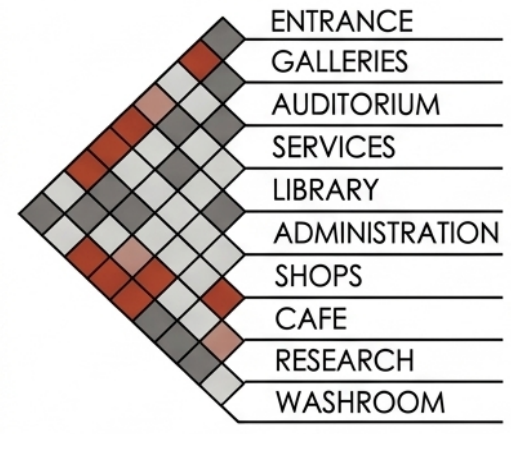
Based on the concept of compression and release, the museum guides users through a sequence of contrasting spaces that evoke different emotions and perceptions. The project aims to transform the museum into a memorable and engaging environment where architecture becomes an active participant in the storytelling process.

SPACE MATRIX DESIGN METHODOLOGY: NATIONAL MUSEUM OF NATURAL HISTORY

SPACES / SPACES →	ENTRANCE	GALLERIES	AUDITORIUM	SERVICES	LIBRARY	ADMINISTRATION	SHOPS	CAFE	RESEARCH	WASHROOM
ENTRANCE	—	B	A	—	C	A	A	A	—	B
GALLERIES	B	—	B	—	B	—	C	B	B	C
AUDITORIUM	A	B	—	B	—	B	—	B	—	A
SERVICES	—	—	—	—	—	—	—	—	—	—
LIBRARY	C	B	—	—	—	B	—	—	A	B
ADMINISTRATION	A	C	—	—	B	—	—	—	—	B
SHOPS	A	C	—	—	—	—	—	A	—	B
CAFE	A	B	B	—	—	—	—	A	—	B
RESEARCH	—	B	—	—	A	—	—	—	—	B
WASHROOM	B	C	A	A	B	B	B	B	B	—

LEGEND

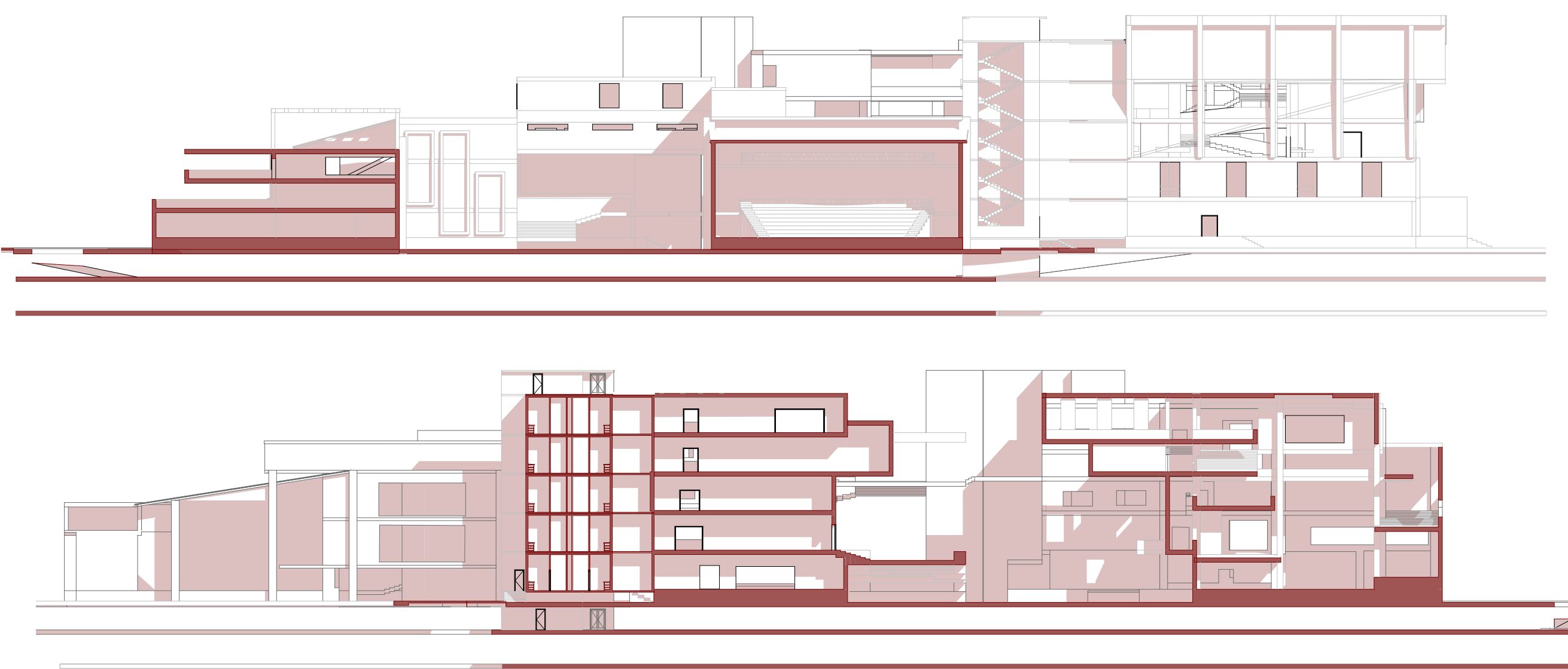
SYMBOL	RELATIONSHIP TYPE	DESCRIPTION
A	Direct Access	Spaces must open directly into each other or share a common interface.
B	Close/Nearby	Spaces should be in close proximity or easily accessible.
C	Visual Connection	Spaces should have a visual link or line of sight between them.
—	No Significant Relationship	No direct or functional connection required.



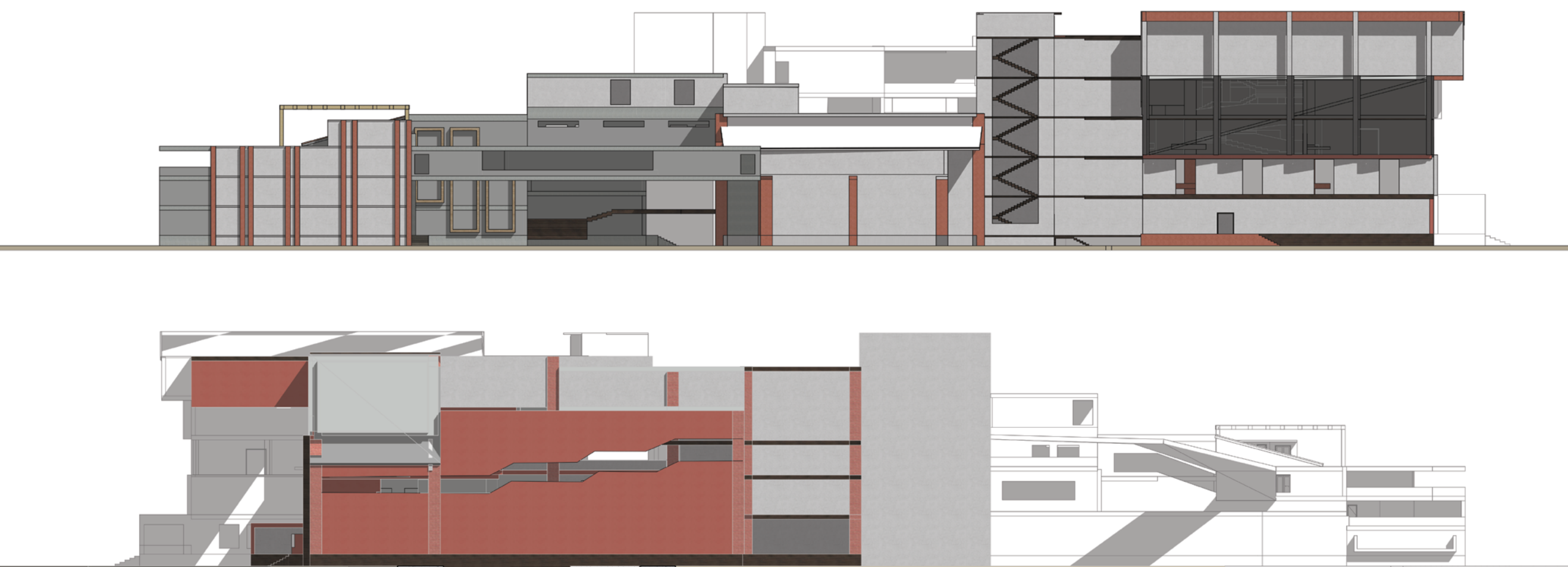
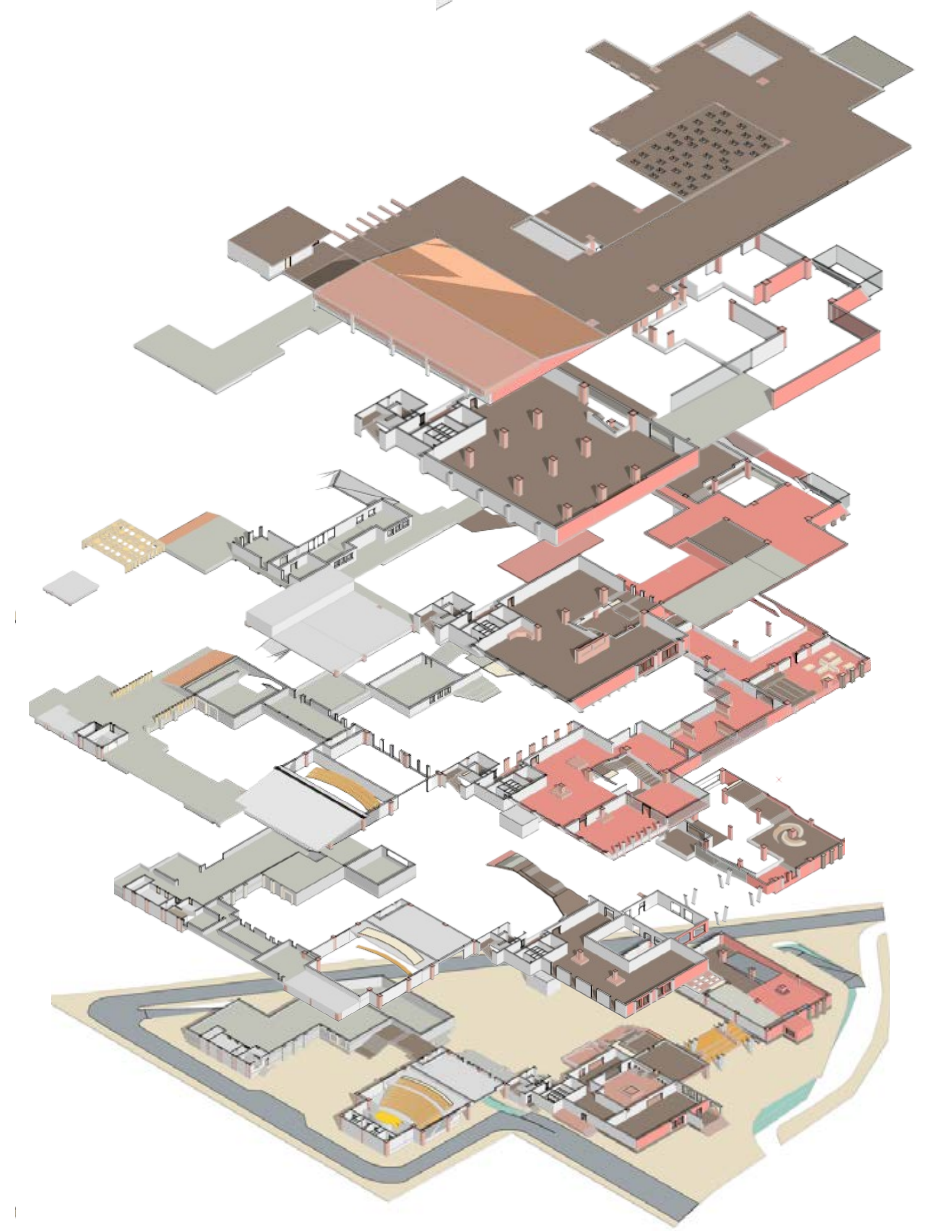
NMNH AREA PROGRAMME
 /PLOT AREA: 21890 SQM/
 FAR 1.5 : 32835 SQM / GC 30% : 6567 SQM

UNIT NO.	UNIT AREA SQM	SHOPPERS ANT	OCCUPY AREA SQM
1.1	ENTRANCE		3000
2.1	GALLERIES PERMANENT		
2.2	GALLERIES TEMPORARY	1.4	
3.1	ORIENTATION CENTRE		
3.2	DIGITAL DISPLAY GALLERIES	1.4/SEAT	100
5.1	AUDITORIUM (MAX COMMON THEATRE)		1000
SUPPORT SERVICES			
			3000
TOTAL L-2			
			37700
ADD 20% CIRCULATION-MISC			
			3500
THIS IS 64% OF FAR			
			21200
B LIBRARY			
			1550
TOTAL B - 2 ADD 20%			
			3050
THIS IS 11% OF FAR			
			600
ADMINISTRATION			
			2100
ADD 30% OF 1400			
			2100
THIS IS 7% OF FAR			
COMMERCIAL			
11.1	SHOPPING	6	5
	SOUVENIR SHOP	6	0
11.2	RESTAURANT		3
	DINING	1.8	360
	KITCHEN		
	STORE		
	TOILETS		
	ADD 20%		
THIS IS 7% OF FAR			
			2000
TOTAL AR (A, B, C, D)			
A	PUBLIC AMENITIES & GALLERIES	21200	64
B	ANCILLARY/LIBRARY	3050	11
C	ADMINISTRATION	2100	7
D	COMMERCIAL	2000	7
			SAY 90%
BALANCE 10% FOR EXPANSION			
		3283	

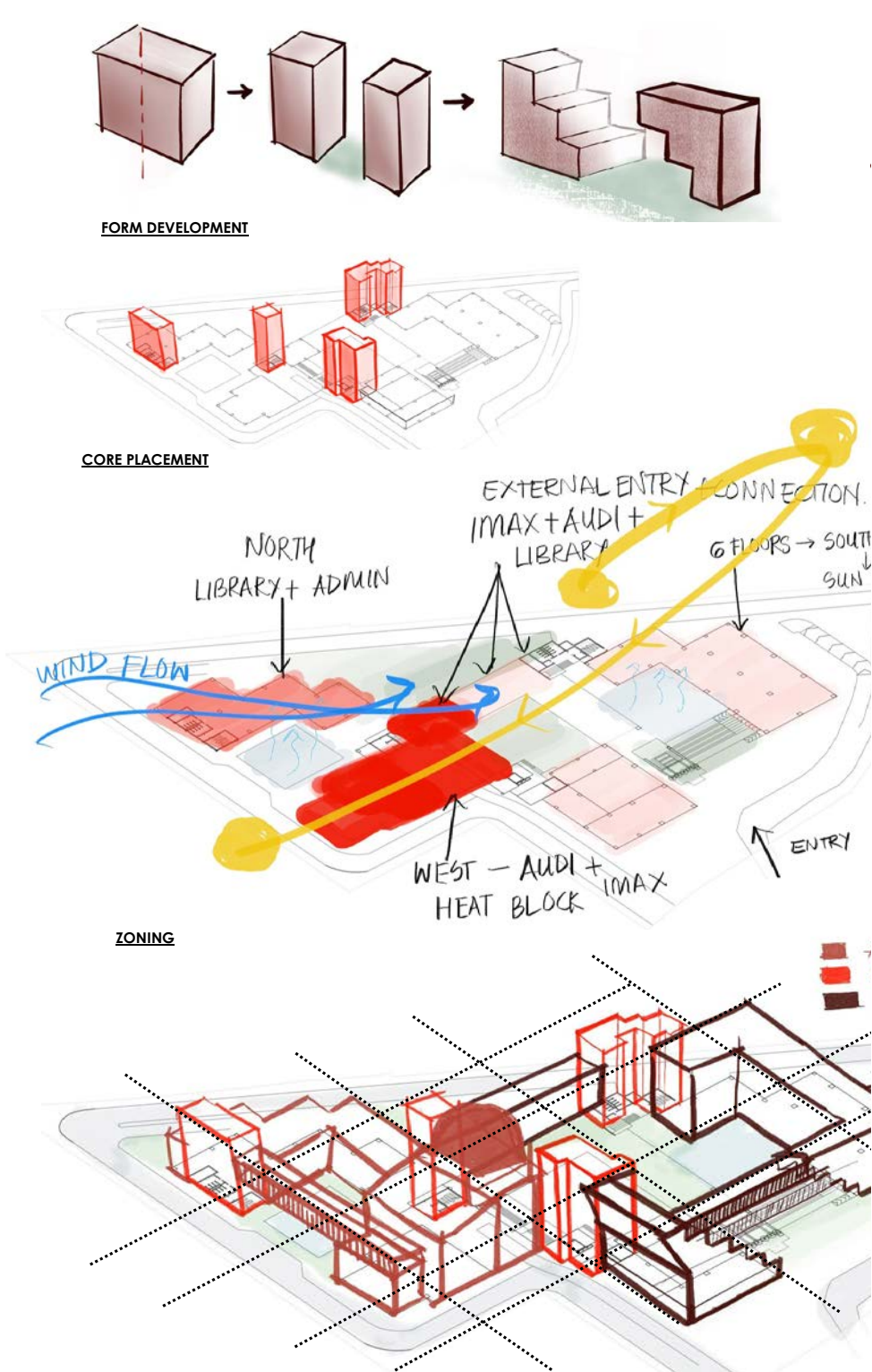
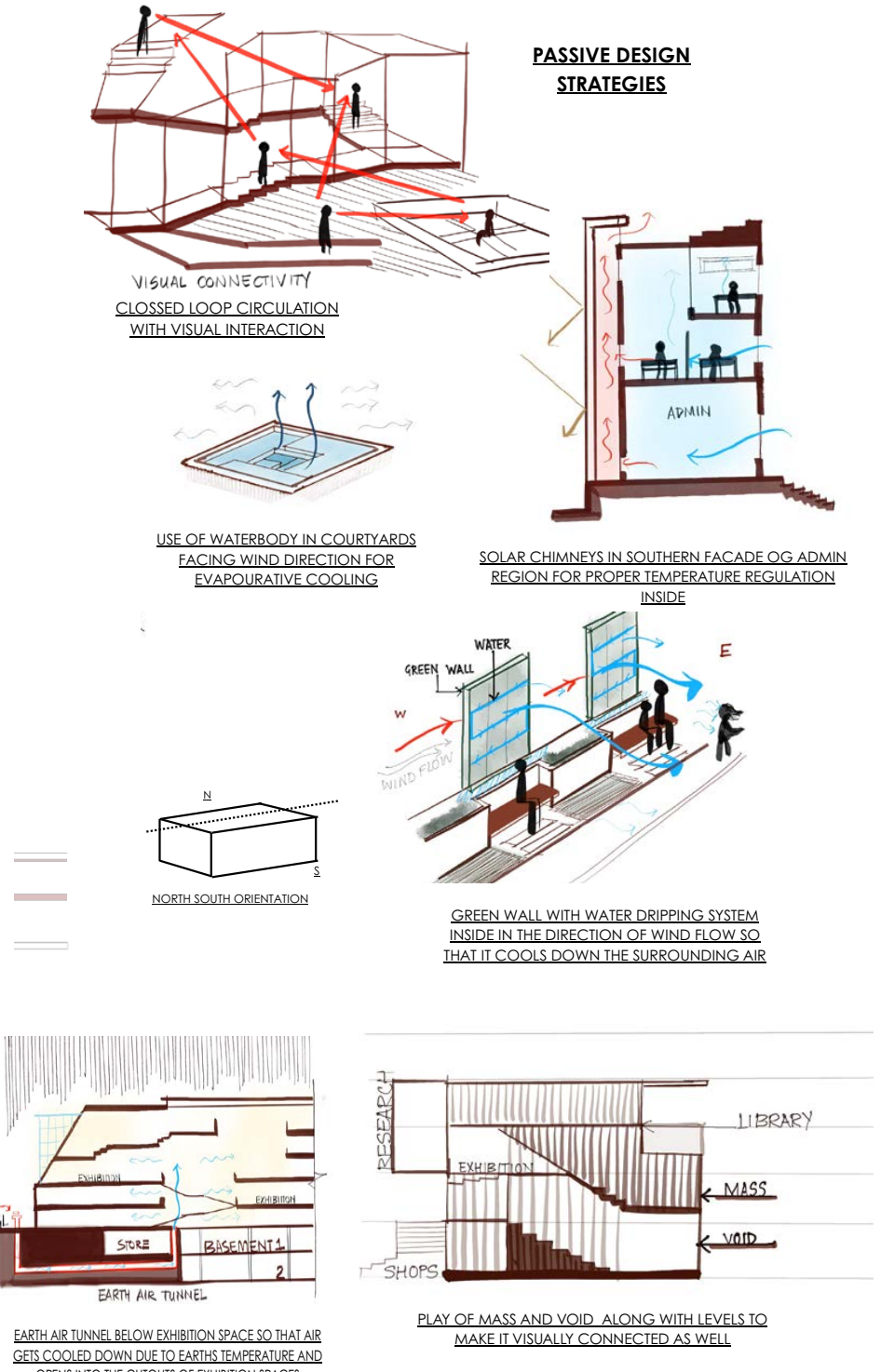




Sections



Elevations



WORKING DRAWINGS

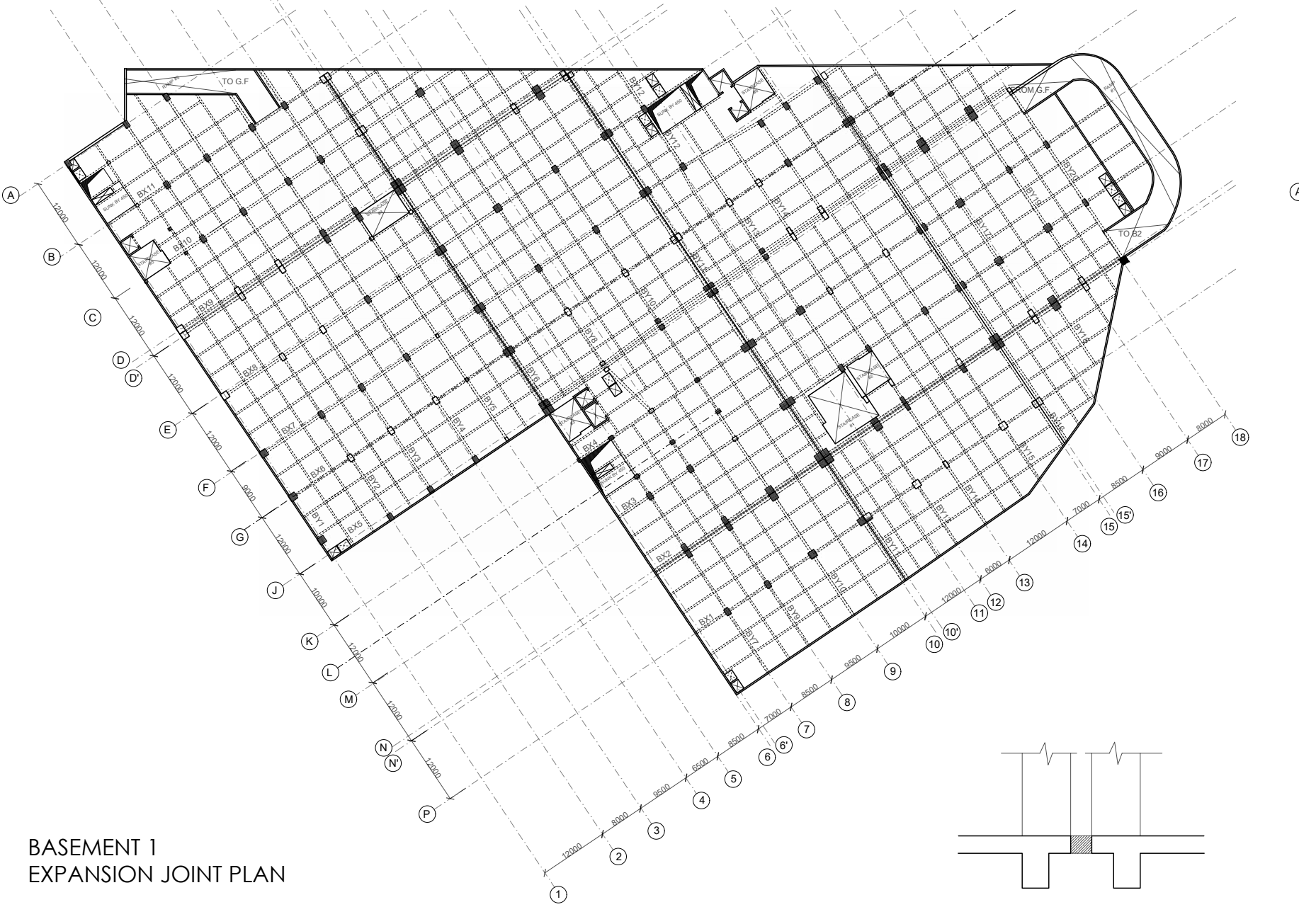


- BUILT UP AREA: 30,000 M²
- ECS: 2@100 SQM
- TOTAL NUMBER OF CARS IN B1+B2: 600
- BASEMENT-1 AREA: 12,400 M²
- NO. OF CARS IN BASEMENT-1: 322
- EFFICIENCY: $32 / (\frac{12400}{32}) = 32/38.5 \times 100 = 83.1\%$

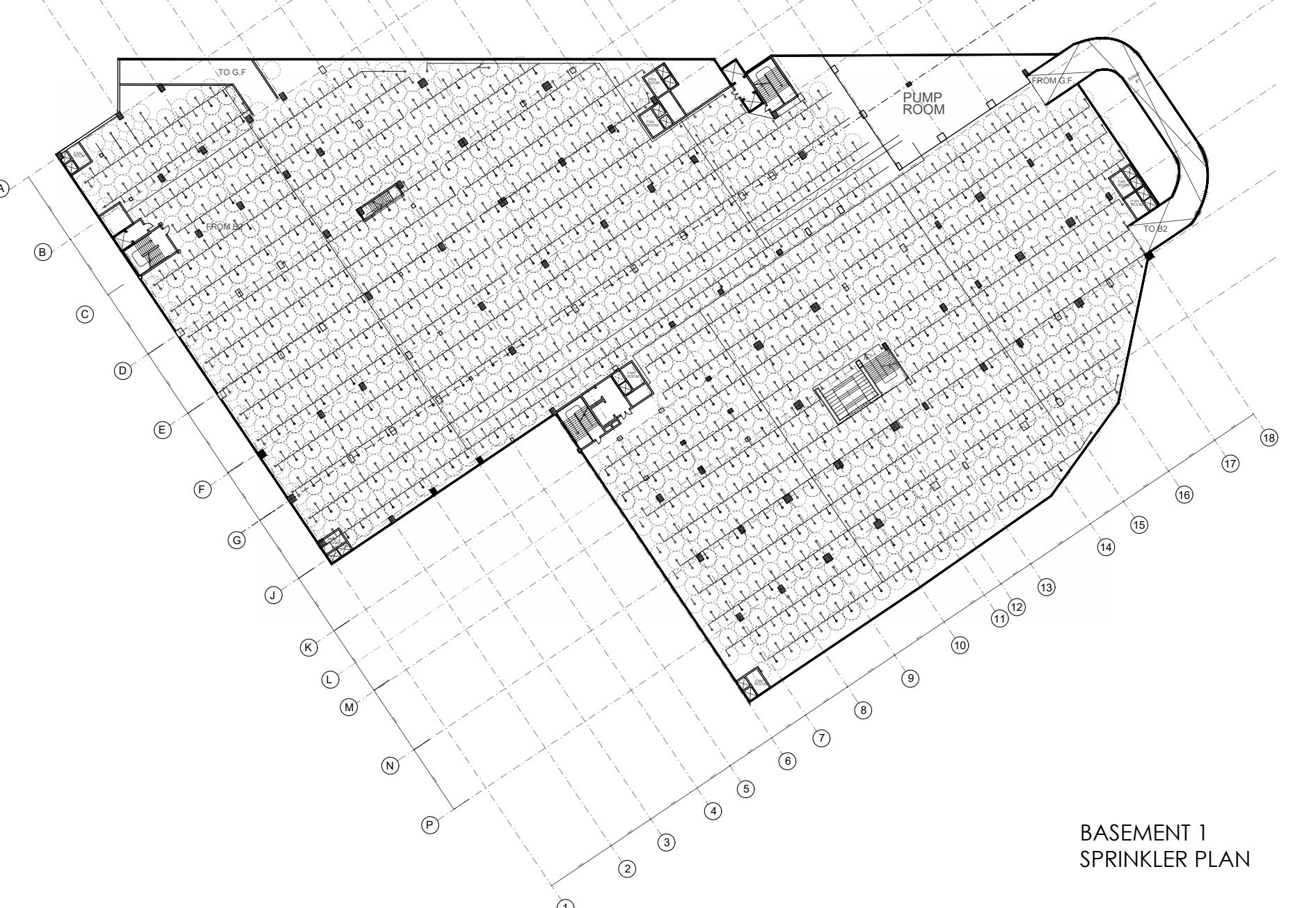
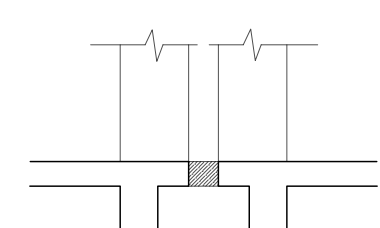
BASEMENT 1 PLAN



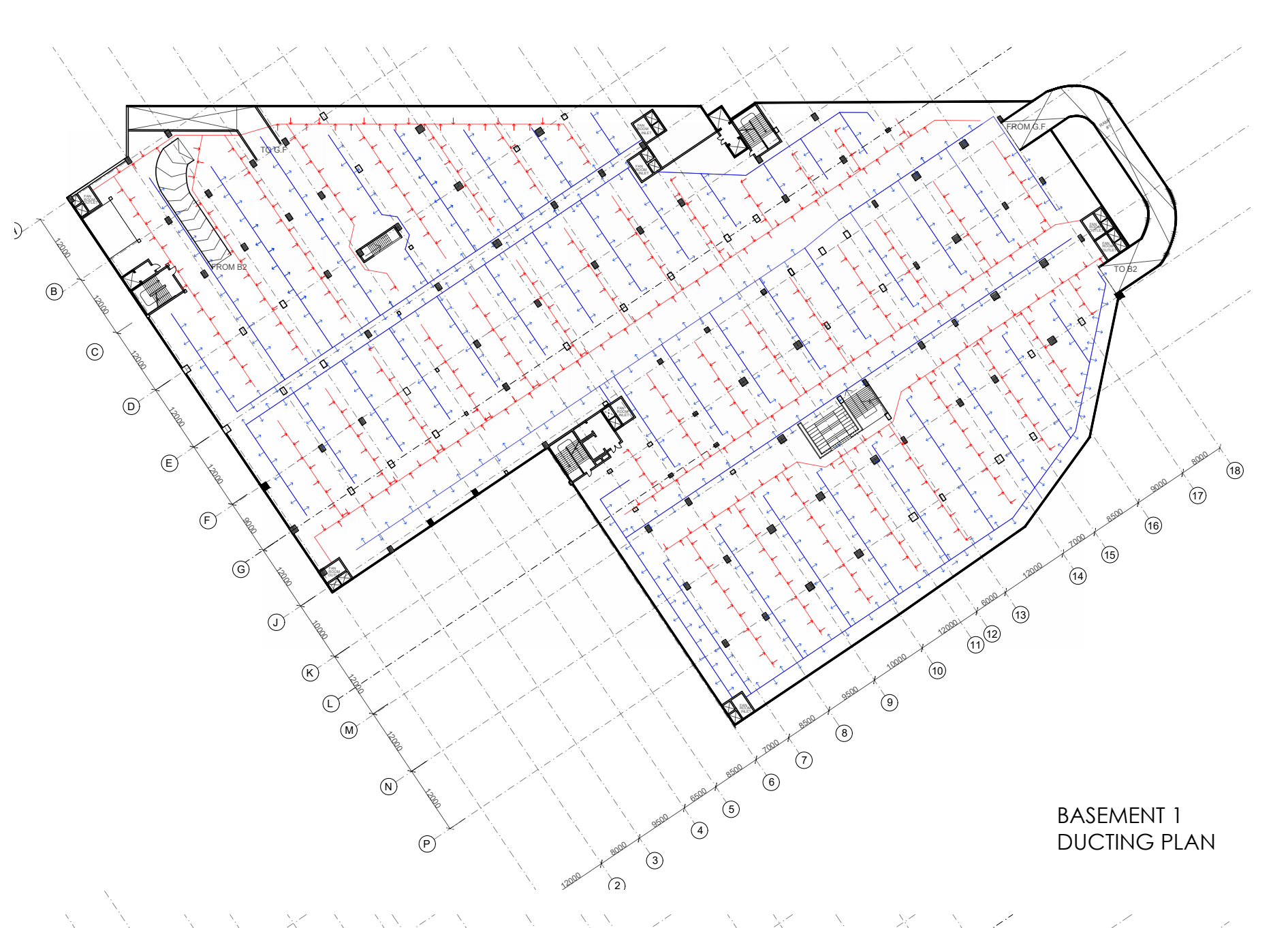
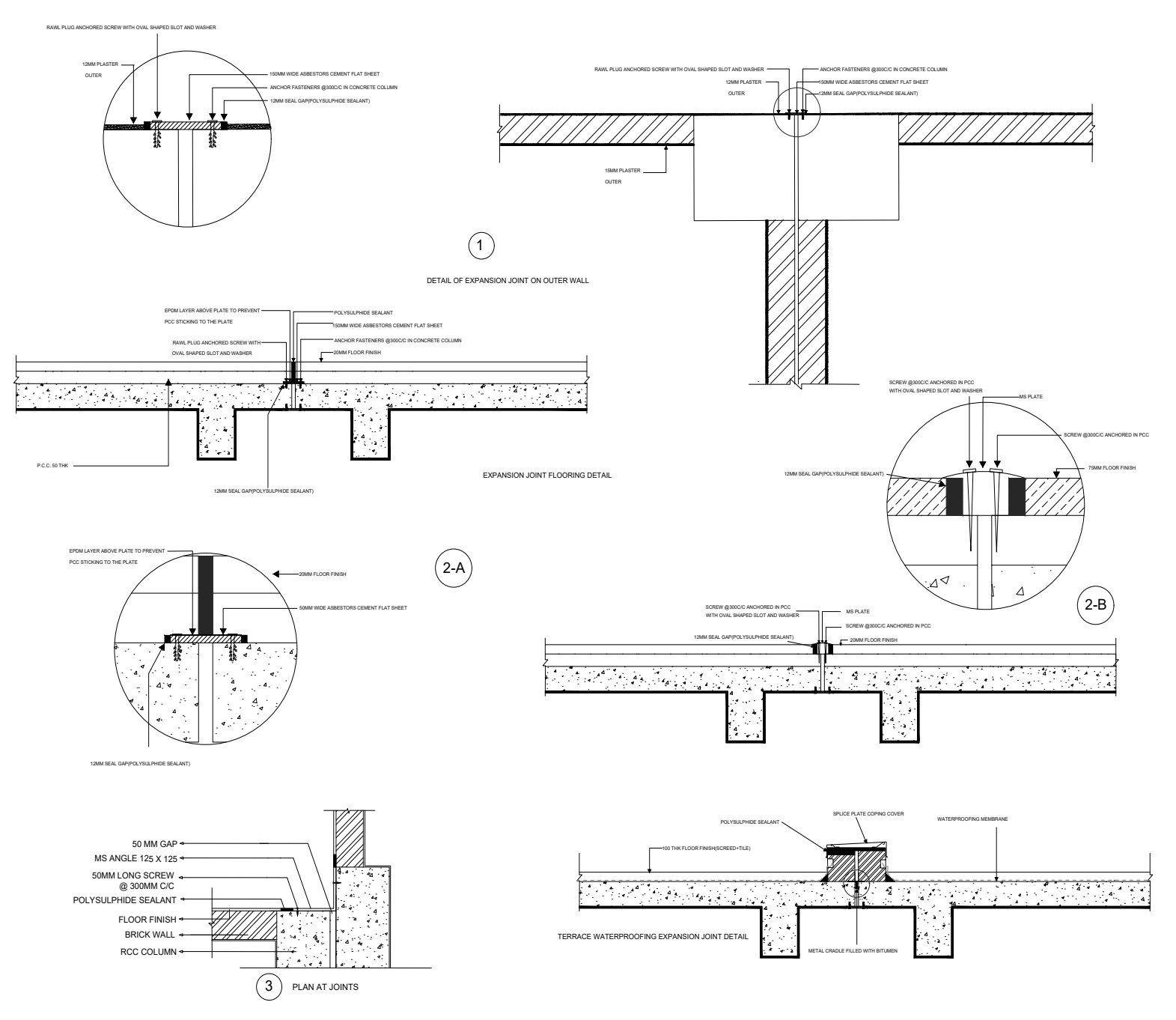
BASEMENT 2 PLAN



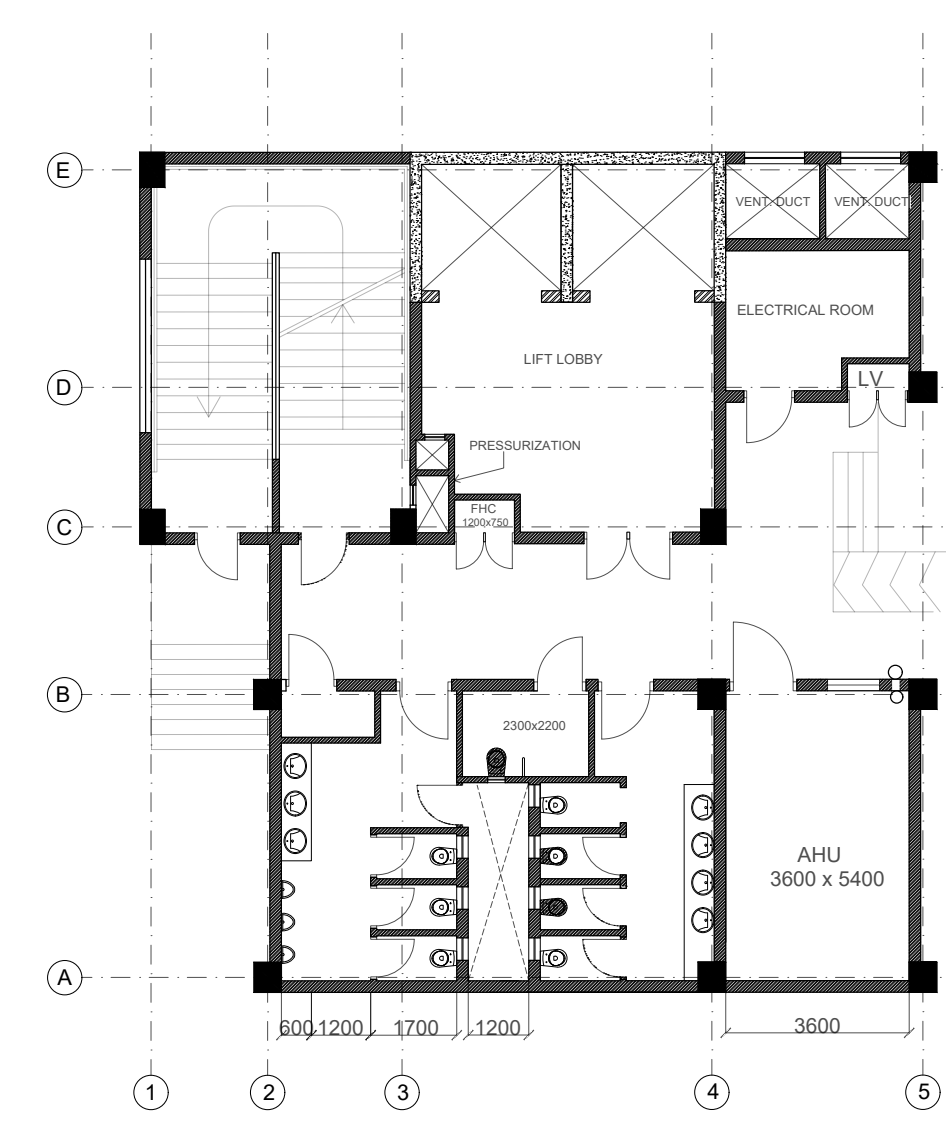
BASEMENT 1 EXPANSION JOINT PLAN



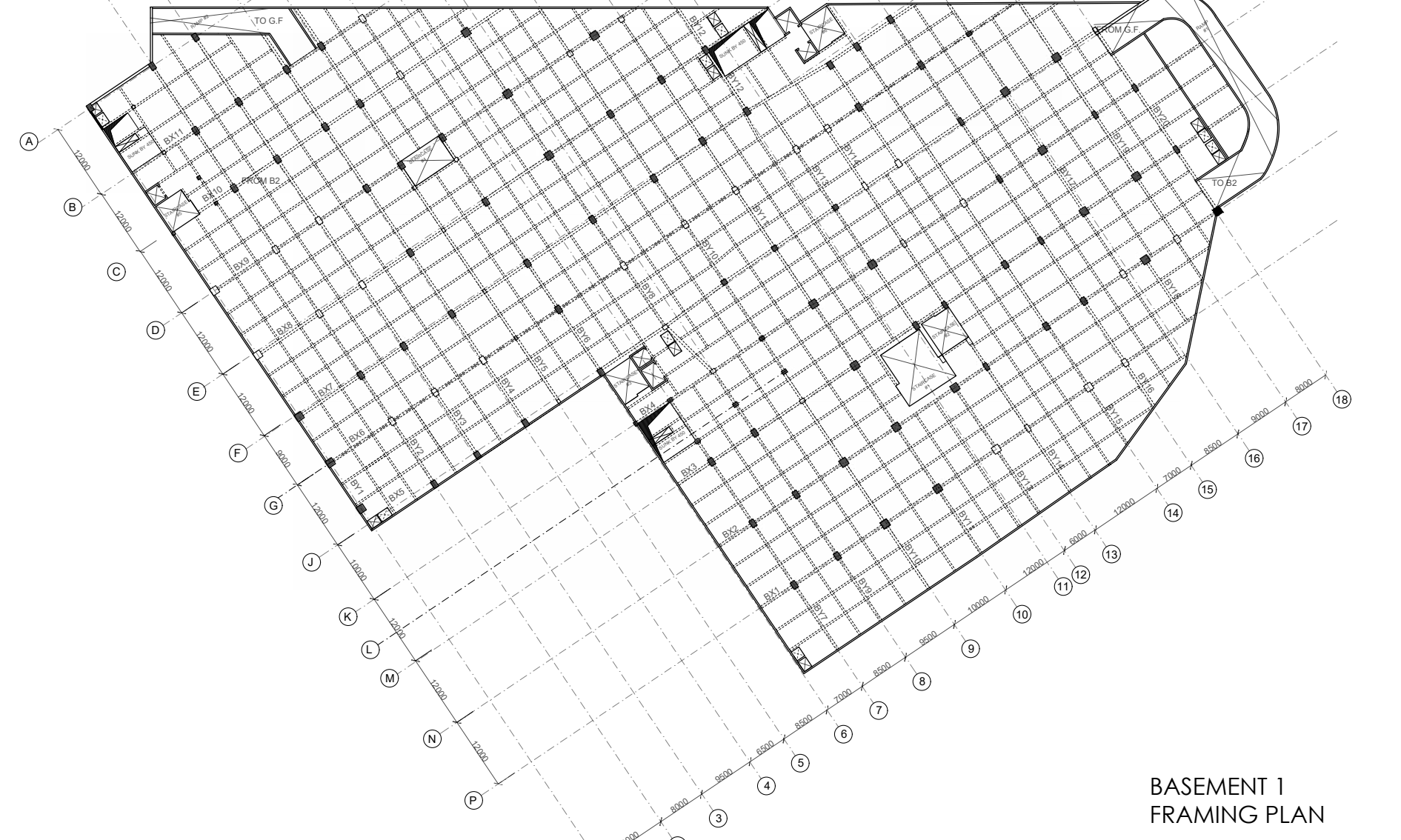
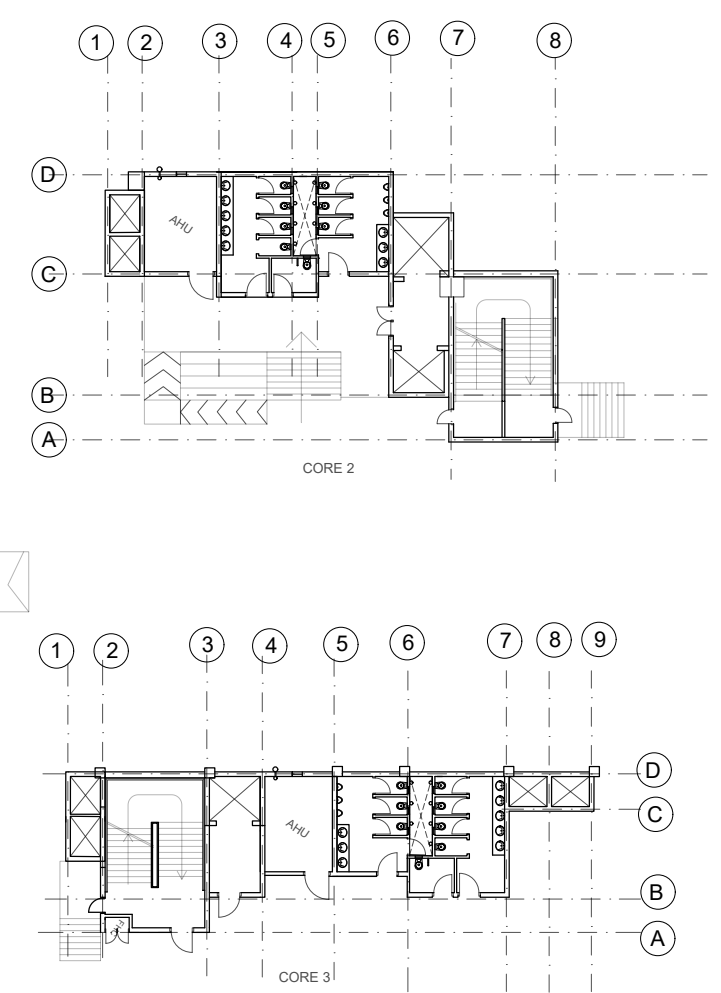
BASEMENT 1 SPRINKLER PLAN



BASEMENT 1 DUCTING PLAN



CORE 1



BASEMENT 1 FRAMING PLAN