



VILA VISUAL LABORATORY

Petra Schindlerová

BGA023 - Ateliér architektonické tvorby 4






Volnočasové centrum na břehu řeky Svatky v nové čtvrti Trnitá

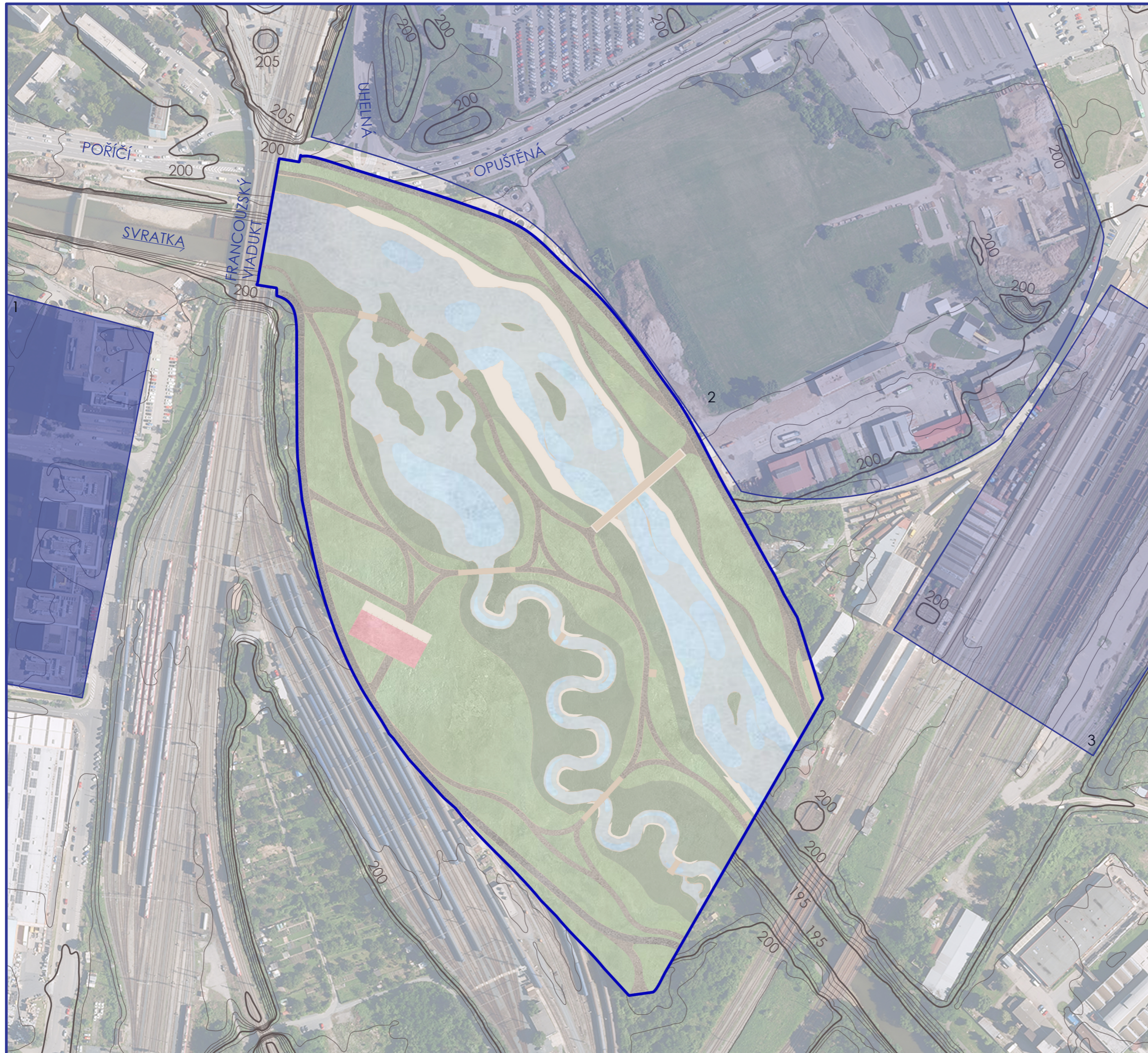
3. ročník/zimní semestr/2025-2026

Vedoucí práce: Ing. arch. Bohumila Hybská

Konzultant: Ing. Olga Rubinová, Ph. D.

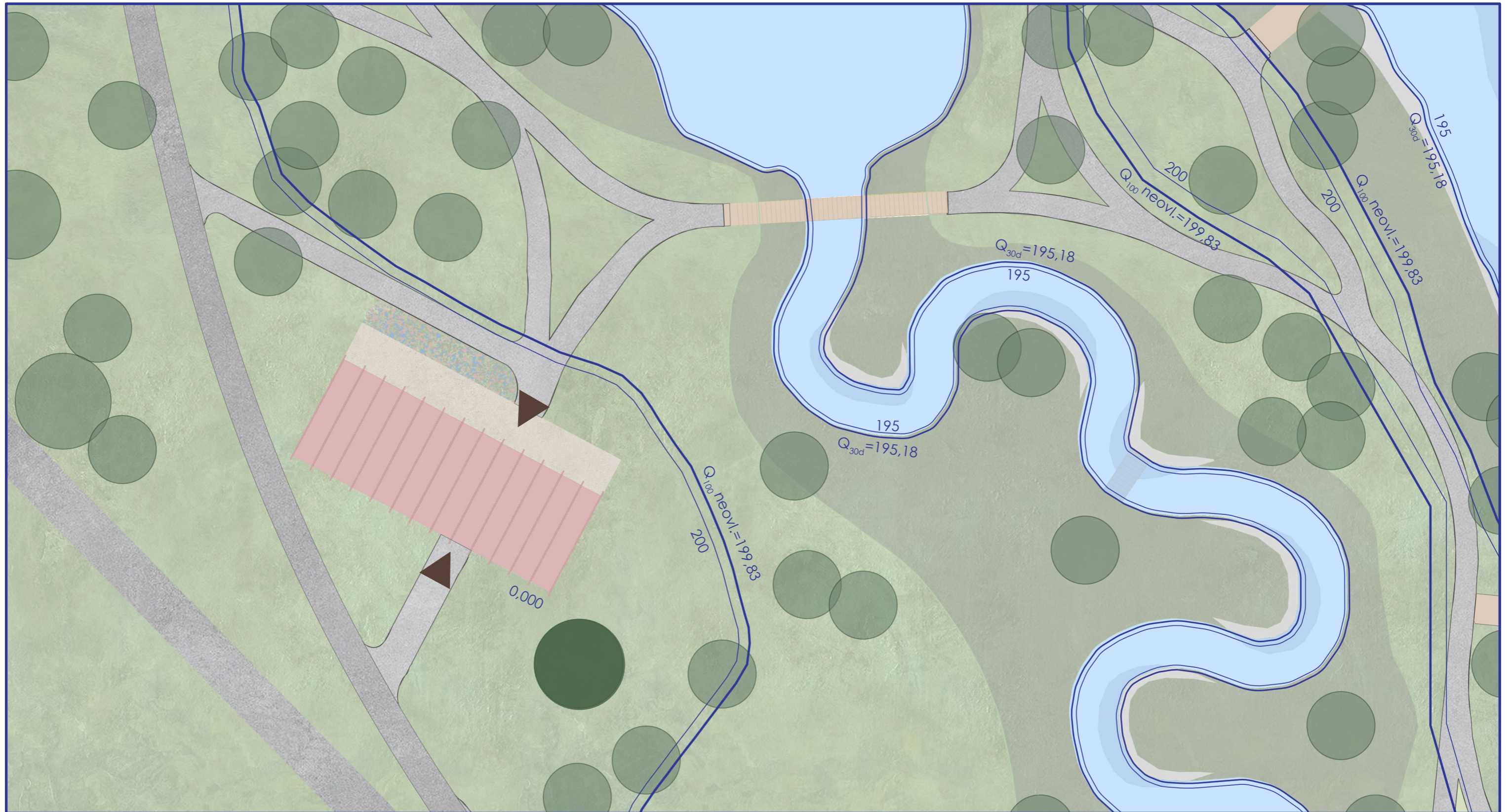
CONTEXT PLAN

-  PROJECT AREA
- NEW FLOOD AREA
-  PROPOSED AREA
-  CONTOUR LINES
(PRIOR TO FLOOD PARK MODIFICATION)
-  KEY LANDMARKS
1. SPIELBERK OFFICE CENTER
-  FUTURE DEVELOPMENT
2. TRNITÁ DISTRICT
3. NEW MAIN RAILWAY STATION



100 m
1:2000
0,000=201,000 m a.s.l. B.p.v

SITE LOCATION
VILA - vizuální laboratoř
SCHINDLEROVÁ PETRA



SITE PLAN

- PROPOSED BUILDING
- CAFE TERRACE
- LAWN
- CYCLE PATH, PEDESTRIAN PATH

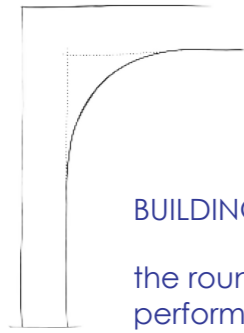
- WATER FEATURES
- BUILDING ENTRANCES
- MATURE TREE PROVIDING SHADE
- WILDFLOWER BED

10 m
 1:500
 0,000=201,000 m a.s.l. B.p.v
SITE LOCATION
 VILA - visual laboratory
 SCHINDLEROVÁ PETRA

CONCEPT

INSPIRATION FROM BRNO'S ARCHES

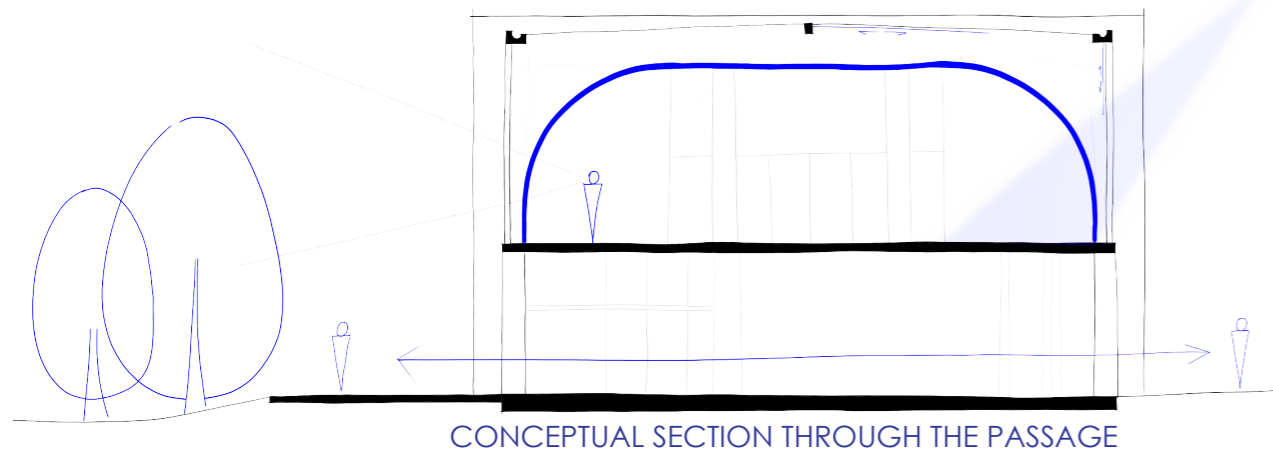
- Exhibition centre, French viaduct, New Main Railway Station



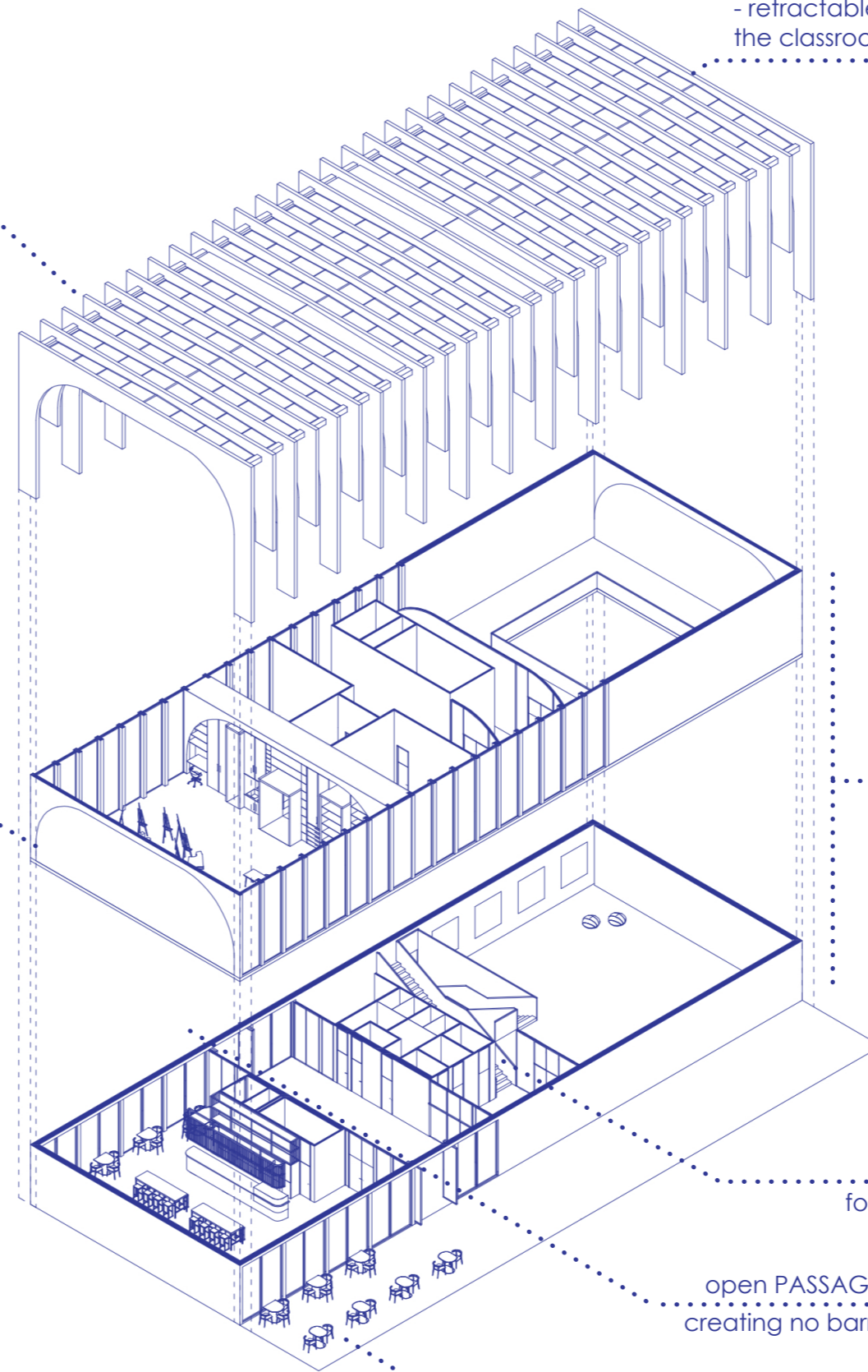
BUILDING STRUCTURE - REINFORCED CONCRETE TRUSSES

the rounding creates a structural haunch, which performs better statically than a right-angled corner

ART CLASSROOM WITH STUDIOS
separated by built-in cabinets



CONCEPTUAL SECTION THROUGH THE PASSAGE



SHADING

- STRUCTURE serving as shading against direct sunlight

- retractable blinds on the glass roof and windows in the classrooms and cafe

GALLERY
double-height space

separate staircases
for the gallery and classroom with studios

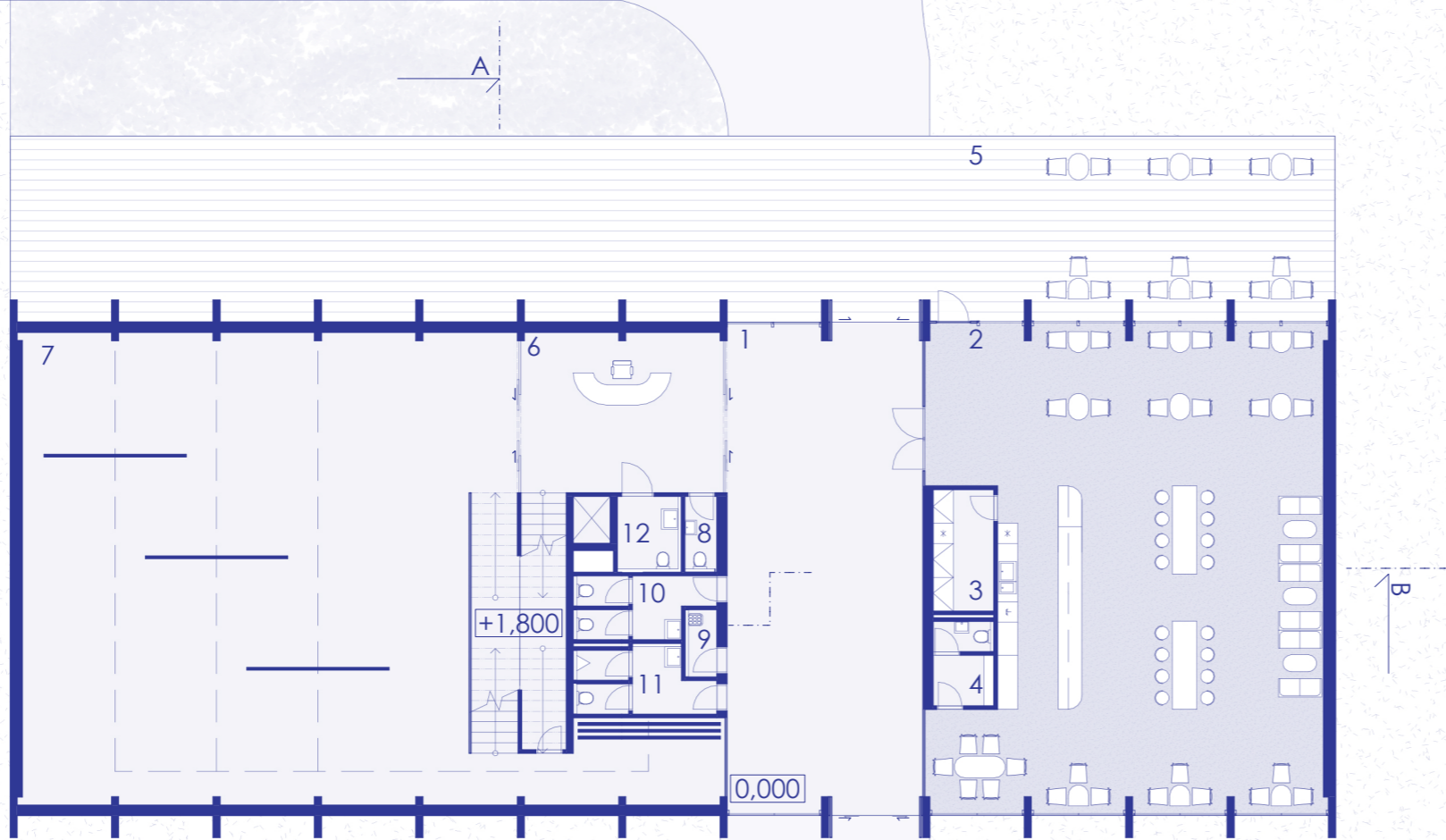
open PASSAGE through the building
creating no barrier within the flood park

CAFE
strong visual connection with the surroundings

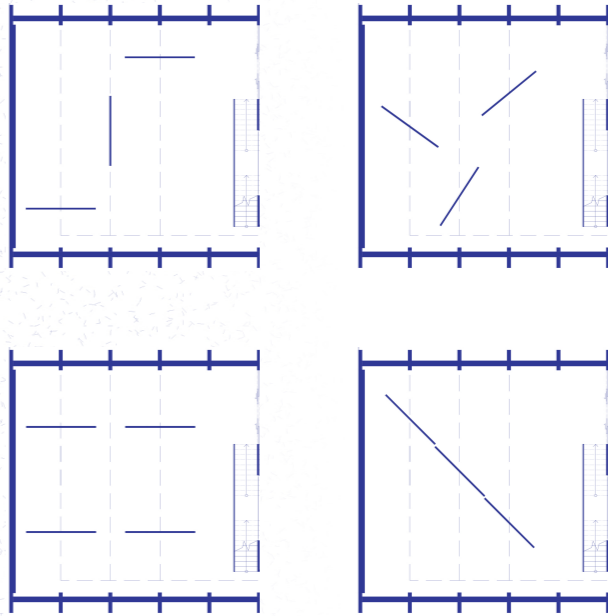
CONCEPT
VILA - visual laboratory
SCHINDLEROVÁ PETRA

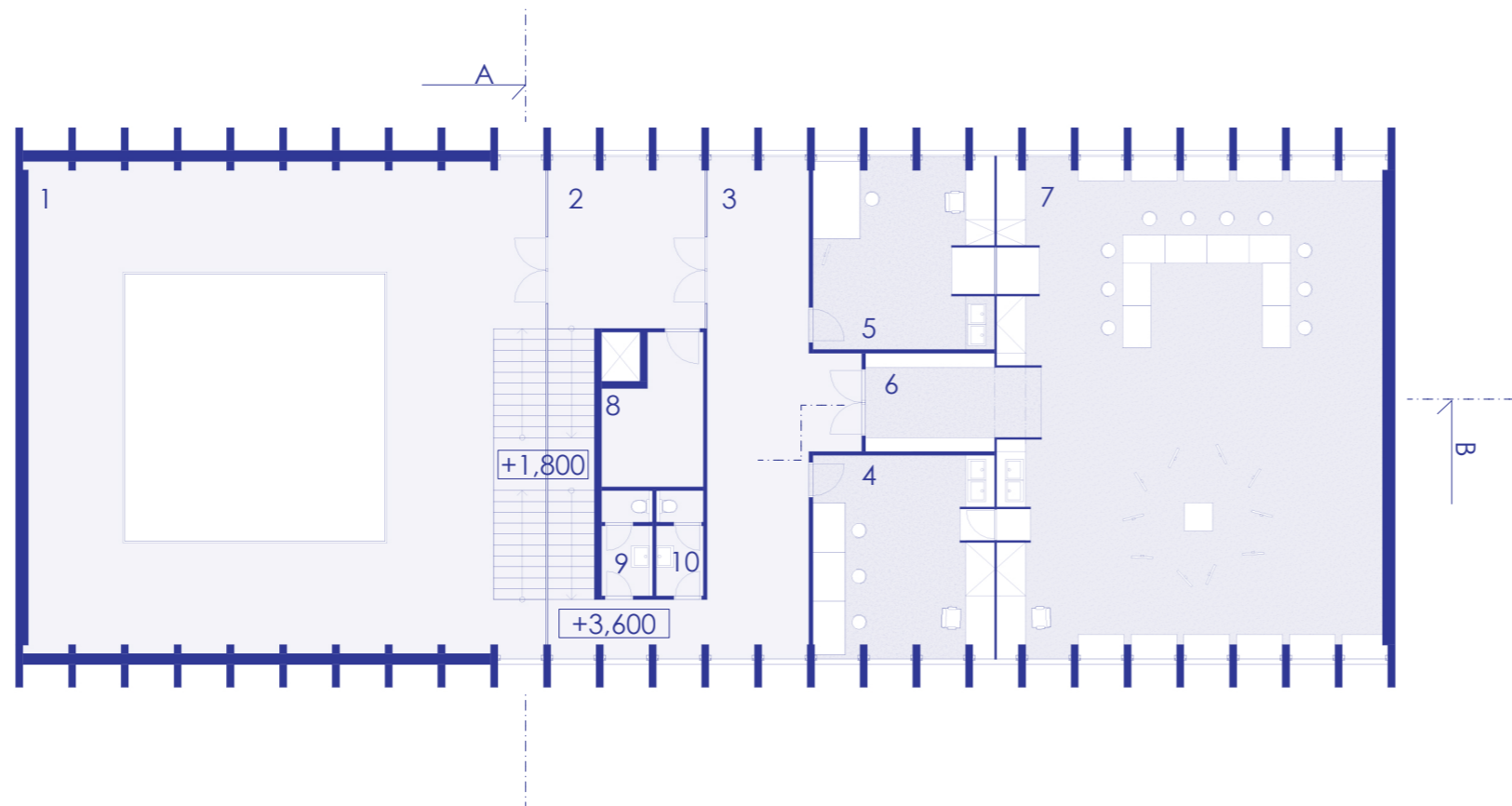
GROUND FLOOR PLAN

1	PASSAGE	80,4 m ²
2	CAFE	157,7 m ²
3	CAFE FACILITIES	6,5 m ²
4	STAFF FACILITIES	4,5 m ²
5	CAFE TERRACE	104,3 m ²
6	RECEPTION	27,5 m ²
7	GALLERY	203,0 m ²
8	STAFF RESTROOM	2,1 m ²
9	UTILITY ROOM	1,9 m ²
10	WOMEN'S RESTROOM	6,8 m ²
11	MEN'S RESTROOM	6,8 m ²
12	ACCESSIBLE RESTROOM	4,3 m ²



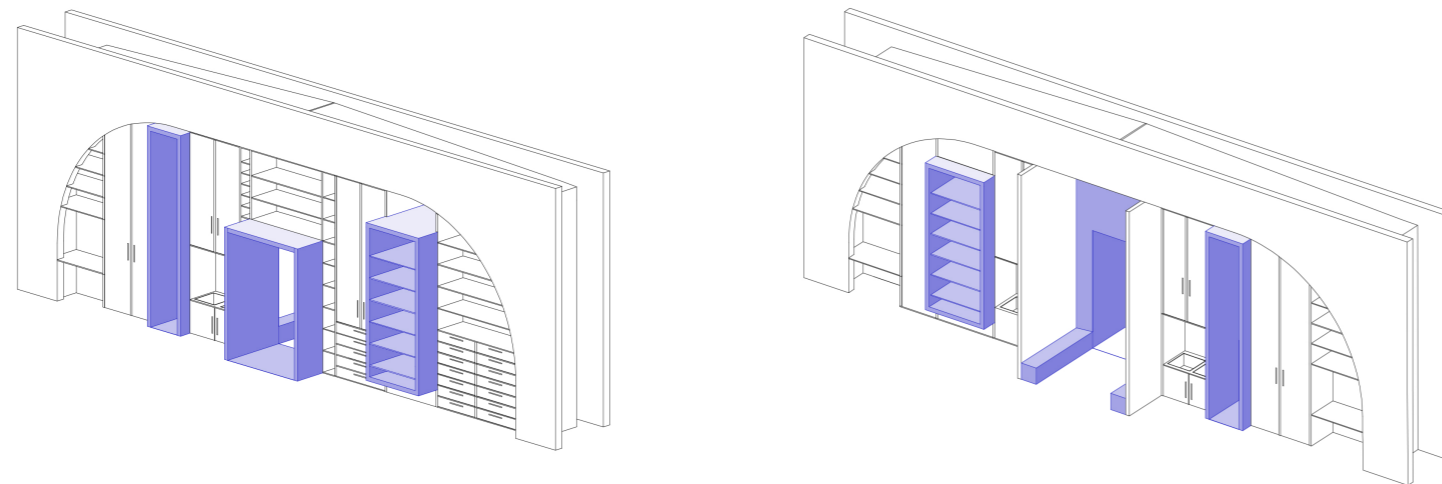
DIFFERENT CONFIGURATIONS OF MOVABLE PARTITIONS IN THE GALLERY





SECOND FLOOR PLAN

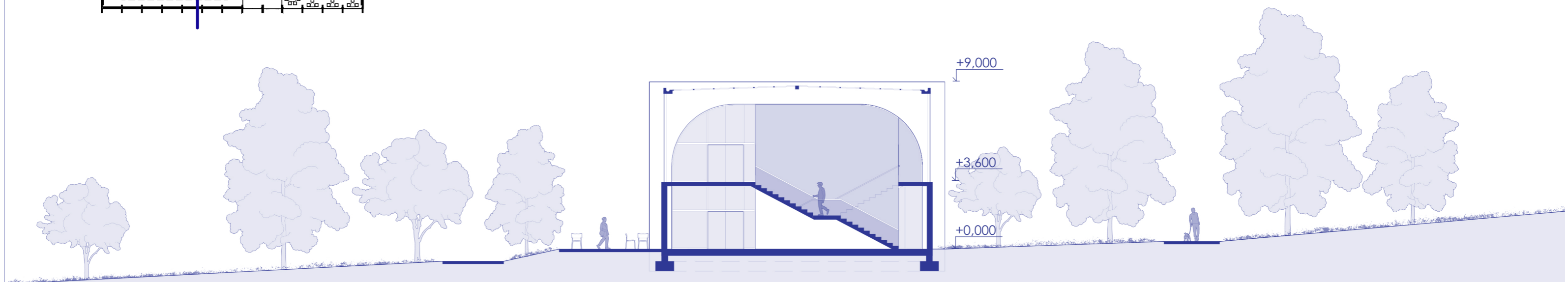
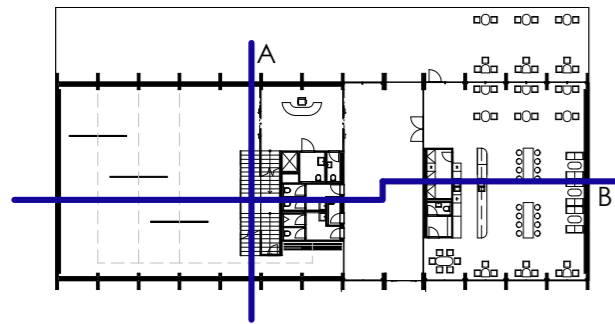
1	GALLERY	139,9 m ²
2	HALLWAY	20,7 m ²
3	HALLWAY	53,3 m ²
4	INSTRUCTOR'S STUDIO	29,9 m ²
5	RENTABLE STUDIO	29,9 m ²
6	CLASSROOM CLOAKROOM	10,4 m ²
7	ART CLASSROOM	157,6 m ²
8	MECHANICAL ROOM	10,4 m ²
9	WOMEN'S RESTROOM	3,9 m ²
10	MEN'S RESTROOM	3,9 m ²



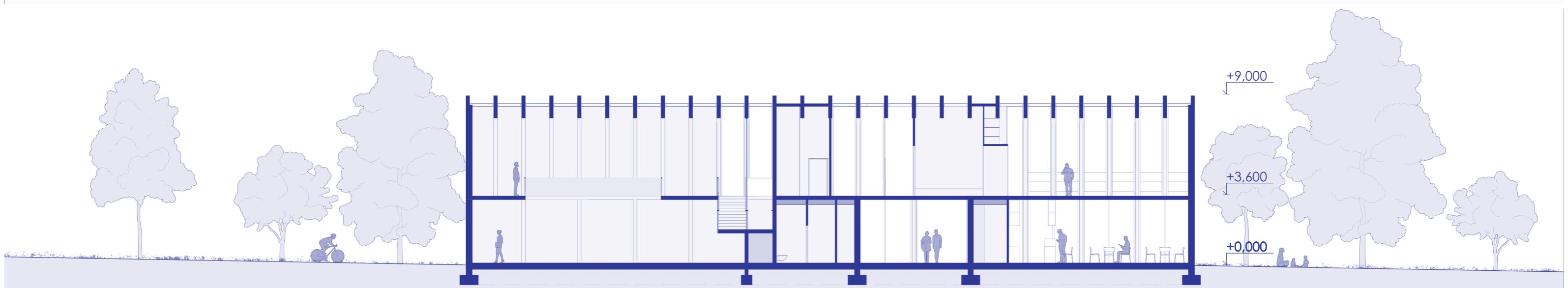
AXONOMETRIC VIEW OF THE DIVIDING CABINET BETWEEN THE STUDIOS AND THE CLASSROOM

This furniture element, sensitively inserted between a pair of load-bearing ribs, defines the boundary between the teaching area and the studio spaces. The proposed design emphasizes maintaining visual continuity and the mutual connection of both spaces. While the cabinet offers an open passage towards the teachers' studio, the section adjacent to the rentable studio features a glass back. This detail allows students to observe professional creators at work and facilitates a free, mutual flow of inspiration. The architectural intent was to define autonomous work zones which, thanks to their transparency, build a sense of a unified creative community.


 10 m
 1:200



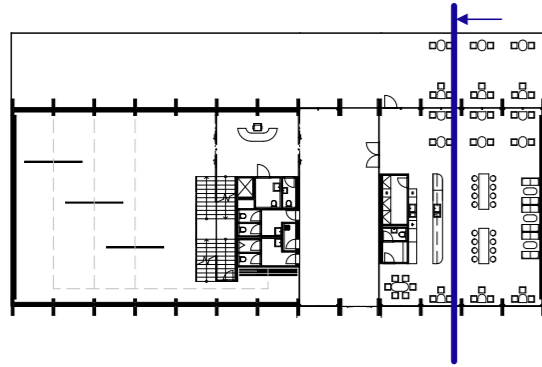
SECTION A



SECTION B

1:200 10 m

SECTION
VILA - visual laboratory
SCHINDLEROVÁ PETRA

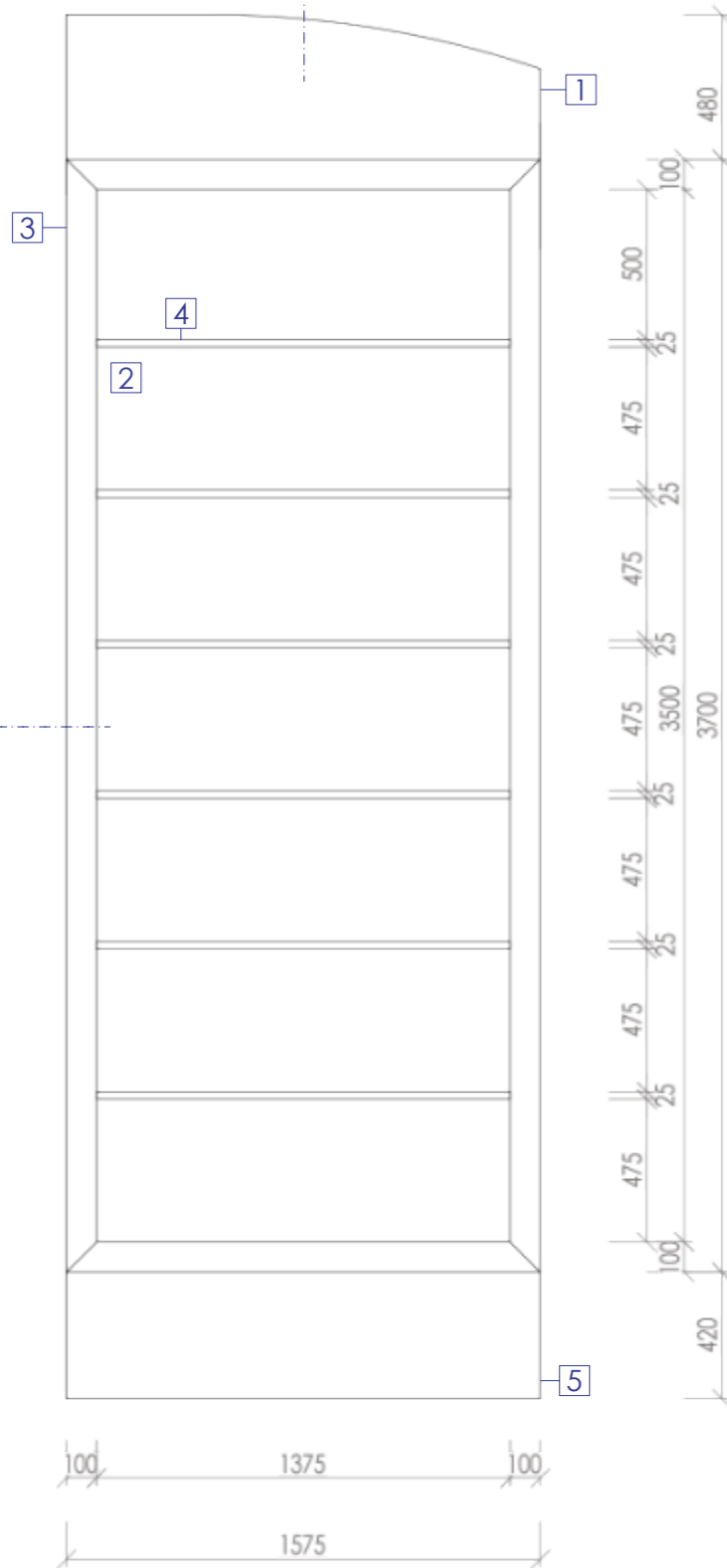


VIEW OF THE CAFE WALL ON THE GROUND FLOOR AND THE CLASSROOM ON THE SECOND FLOOR

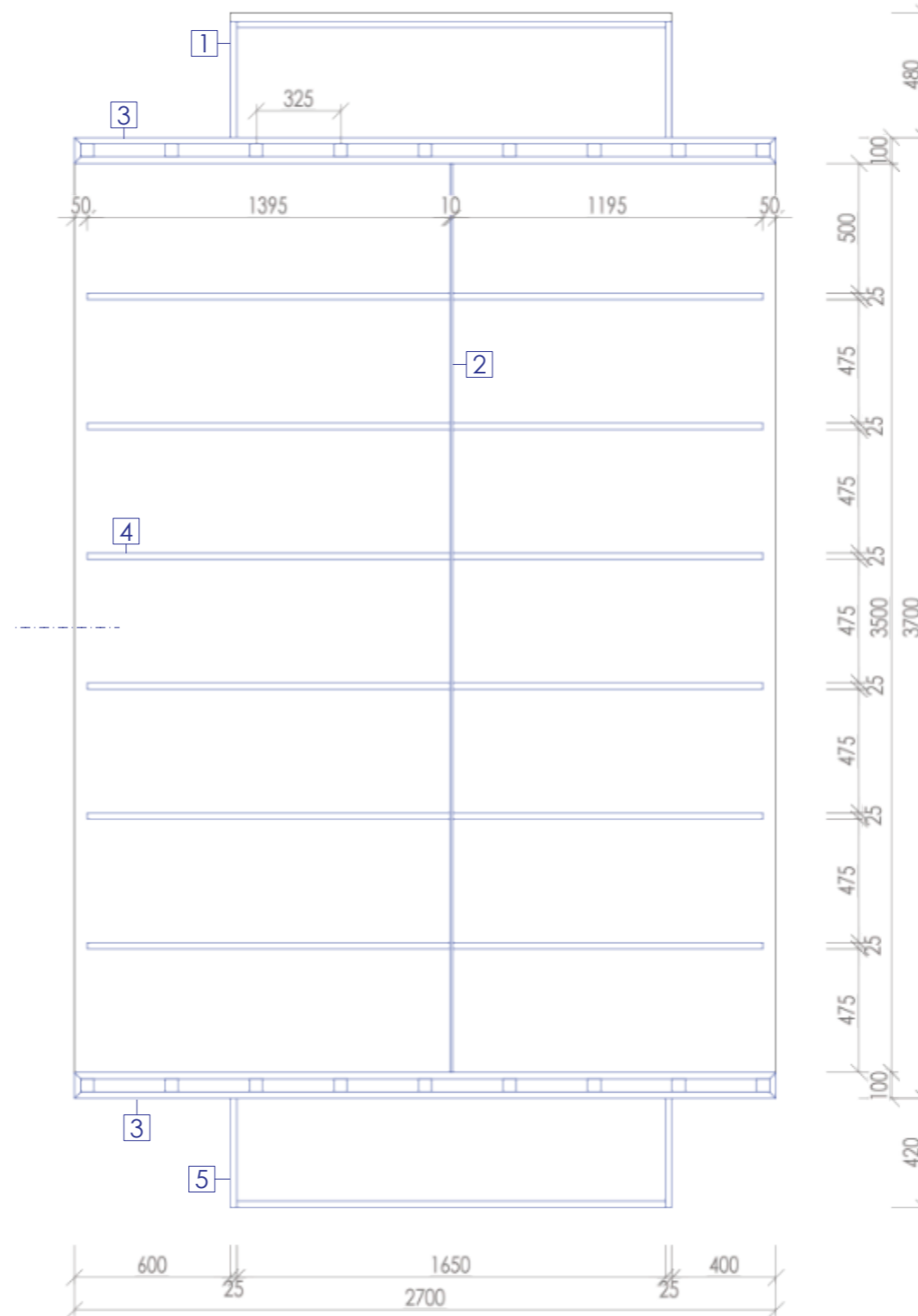
1 m
1:75

SECTIONAL ELEVATION
VILA - visual laboratory
SCHINDLEROVÁ PETRA

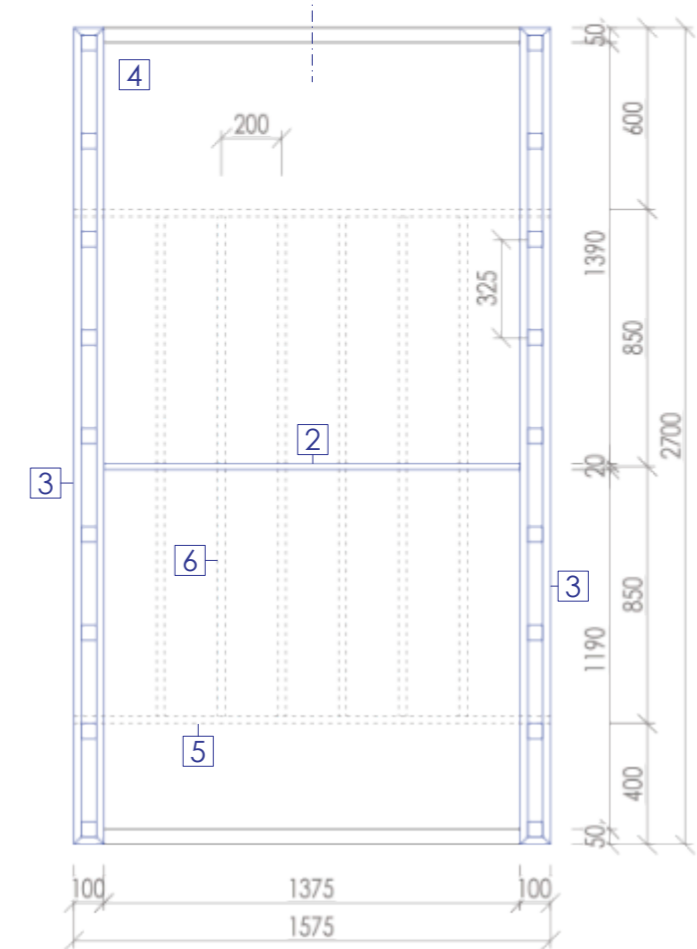
ELEVATION



SECTION



FLOOR PLAN



- 1 Veneered blockboard th. 25 mm, straight-grain oak veneer, the cover panel meets the ceiling with a 5 mm gap, joint sealed with flexible acrylic sealant (white color)
- 2 Cabinet back: tempered glass th. 10 mm, set in a 12 mm carcass groove with permanently flexible sealant (silicone)
- 3 Sandwich construction consisting of two veneered blockboards th. 25 mm on the outer faces and an internal reinforcing frame of spruce battens th. 50 mm spaced at 325 mm (on center), straight-grain oak veneer, blue polyurethane (PUR) spray finish (RAL 5002)
- 4 Shelf - veneered blockboard th. 25 mm, straight-grain oak veneer, placed on flanged metal shelf pins, blue polyurethane (PUR) spray finish (RAL 5002)
- 5 Solid load-bearing base, veneered blockboard frame th. 25 mm, straight-grain oak veneer
- 6 Plywood stiffener th. 25 mm ensuring structural stability, spaced at 200 mm (on center)

CABINET DETAIL IN THE ART CLASSROOM

1 m
1:25

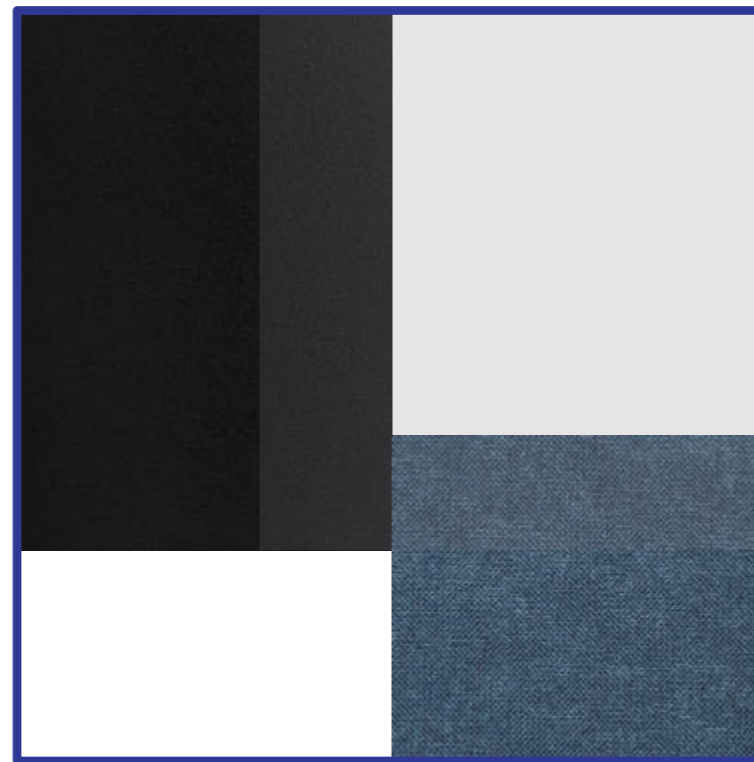
DETAIL
VILA - visual laboratory
SCHINDLEROVÁ PETRA

MATERIAL PALETTE

CAFE



GALLERY



CLASSROOM AND STUDIOS

