

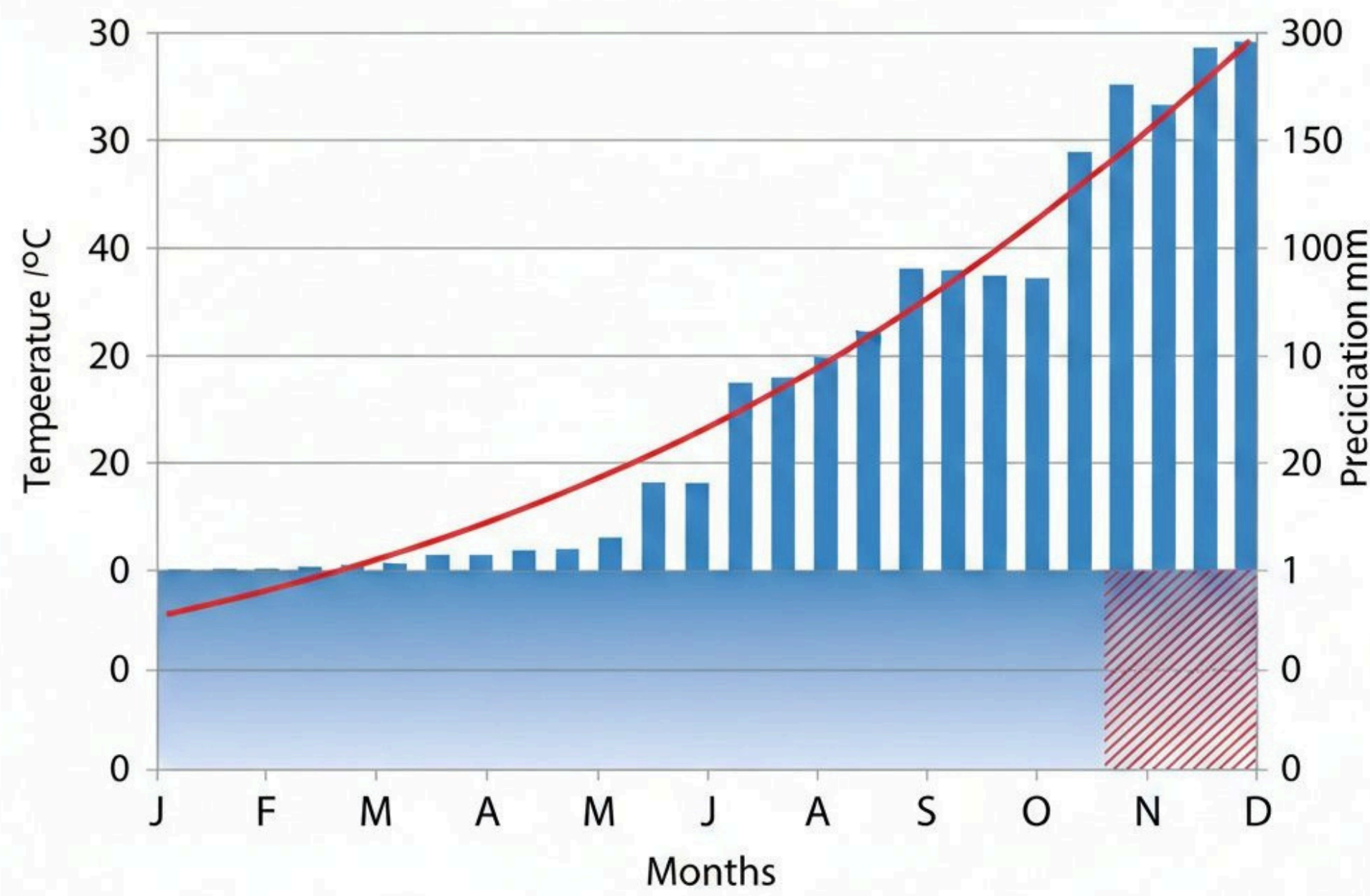
SITE SITUATION AND ANALYSIS

DRY TROPICAL CLIMATE

Climat de Lubumbashi

Temp. Annuelle: 22.5°C

Précip. Annuelle: 1200mm



Lat: 11.66° S, Long: 27.48° E

STUDY OF THE SHADOW

SAISON SÈCHE



Matin: Ombres Portées Max. (Est vers Ouest)



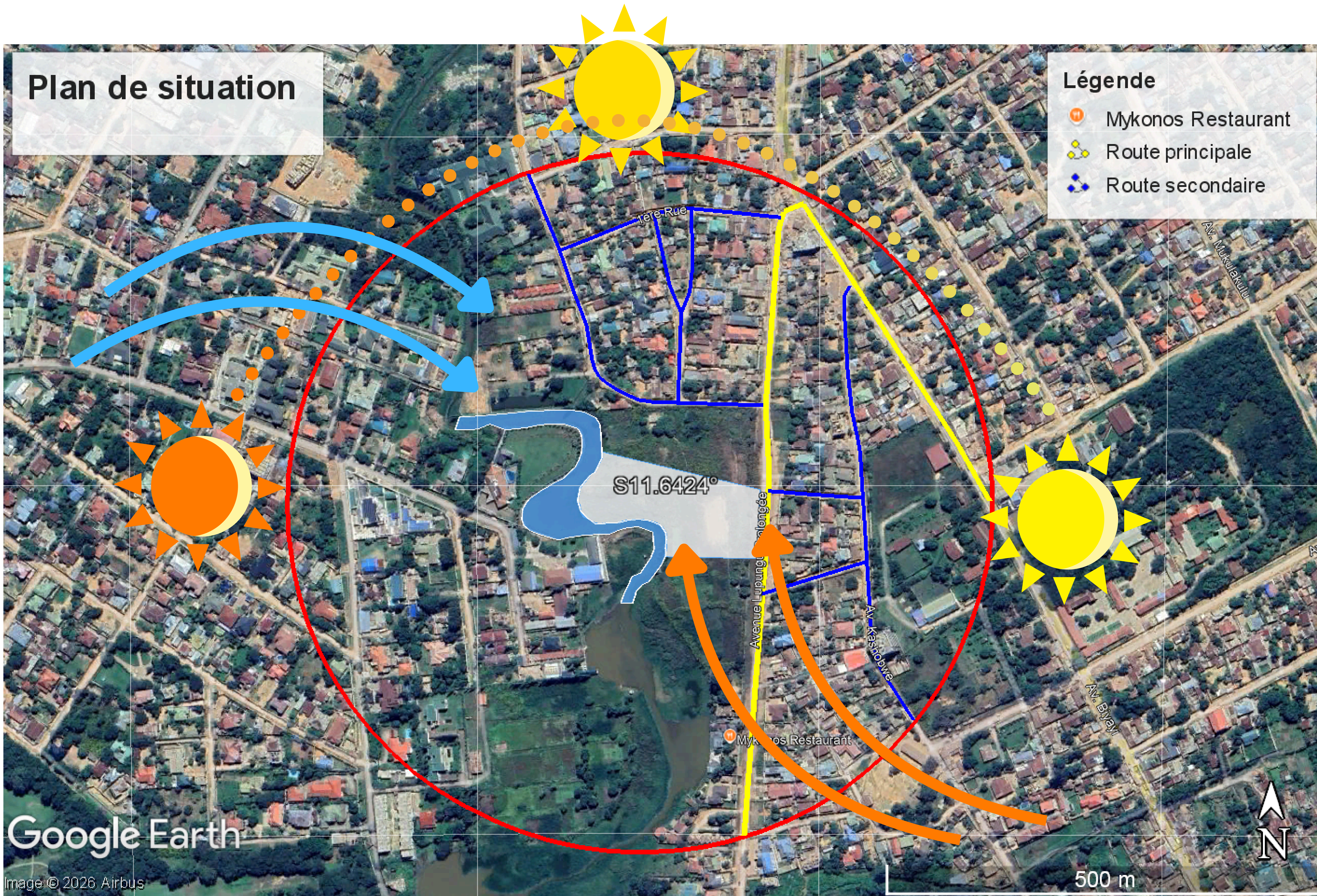
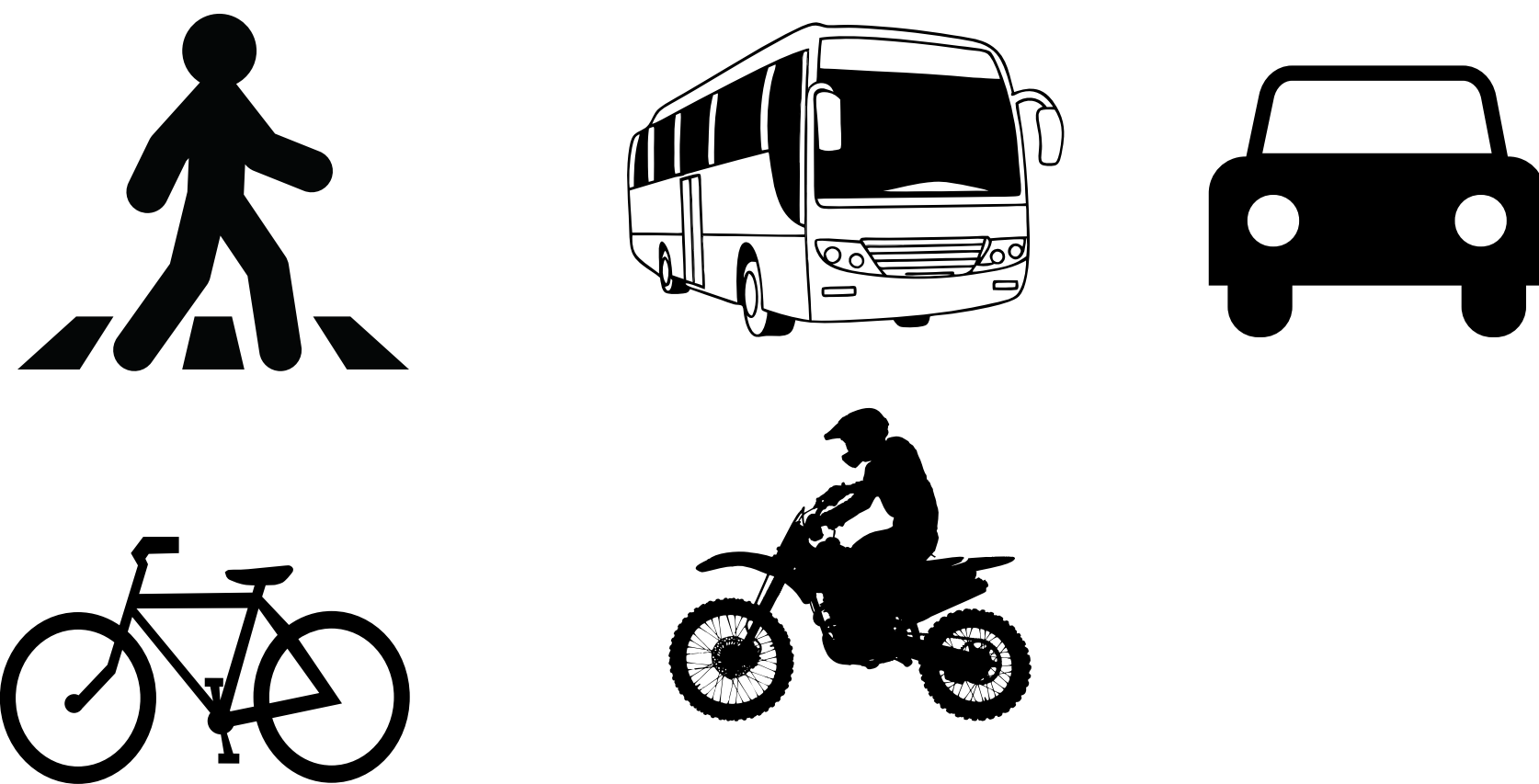
Midi Solaire: Ombres Courtes (Soleil Haut)

SAISON DES PLUIES



Ciel Nuageux: Lumière Diffuse, Ombres Atténuées

MEANS OF APPROACH



HUMID WINDS ACCOMPANIED BY PRECIPITATION

REGULAR AND MODERATE DRY SEMI-WINDS