

BROKIS Museum of glass

bc. Tomáš Konvalina
1205/2022
LS 2025/2026

Arch. Marco Bruno Andrade Maio / Ing. arch. Adam Bohaty, Ph.D. / Ing. arch. Hasan Moeed, Ph.D.



BROKIS is a contemporary Czech glass and lighting brand renowned for its craftsmanship and design, combining traditional glassmaking techniques with a distinctly modern aesthetic. The brand's home is Jaráňov, a small village in the Bohemian-Moravian Highlands, historically rooted in the tradition of glassmaking that has shaped the region for centuries. It is here that BROKIS has proposed a new campus that brings together the brand's production, identity, and heritage in a single place.

The **urban design** proposal reframes the campus around the needs of its visitors, with vegetation and layout conceived as a continuous journey — from the entrance through the museum, culminating in a visit to the working factory itself.

The **museum** occupies a historical production hall whose appearance had been eroded over time by demolitions and poorly considered additions. Through targeted interventions — removing extensions that burdened the building visually and reconstructing lost elements — the proposal restores the hall's original elegance, guided throughout by a deep attention to the interplay of light and shadow.

EXHIBITION CONCEPT

SILICA SAND

Raw silica sand — the essential foundation of every piece of glass — arrives in monumental heaps that fill the space with quiet, geological grandeur, illuminated from above by skylights that cast shifting light across their surfaces.



FURNACE

A more intimate space radiates warmth through walls and ceiling clad in Brokis glass in deep cognac tones, where skylights pour natural light over the surfaces, evoking the heat and glow at the molten heart of the glassmaking process.



MOLDS

Molds line the walls in a beautiful arrangement underneath the room's ceiling, each one bathed in vibrant natural light cascading from skylights above, while glassblowing pipes suspended from the roof form a dense, choreographed canopy.



PRODUCT AND WASTE

The flawless finished pieces stand in contrast with the raw remnants of its creation. Yet above these piles of glass offcuts, the lights breathe with the architecture, gracefully ascending with the ceiling's profile.



NEW LIFE

Heaps of recycled glass find new life within a light labyrinth of Brokis boards, creating a sense of compressed feeling for visitors, as this architectural maze builds suspense right before opening into the hall.



SCHWARZPLAN



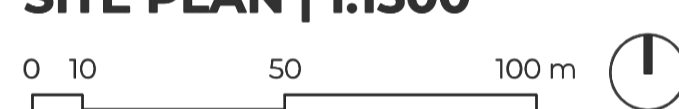
CURRENT CONDITION



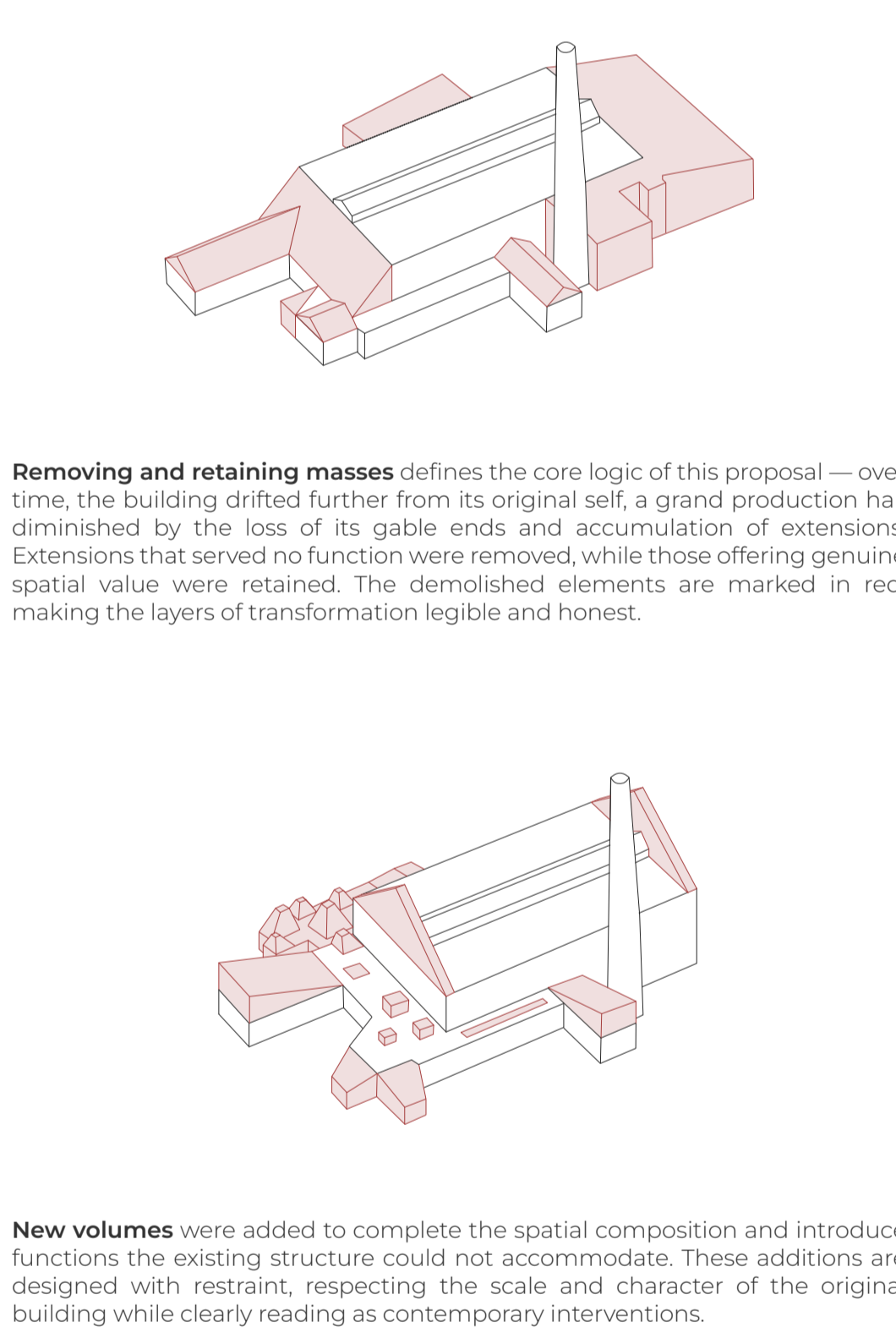
HISTORICAL PHOTOS



SITE PLAN | 1:1500

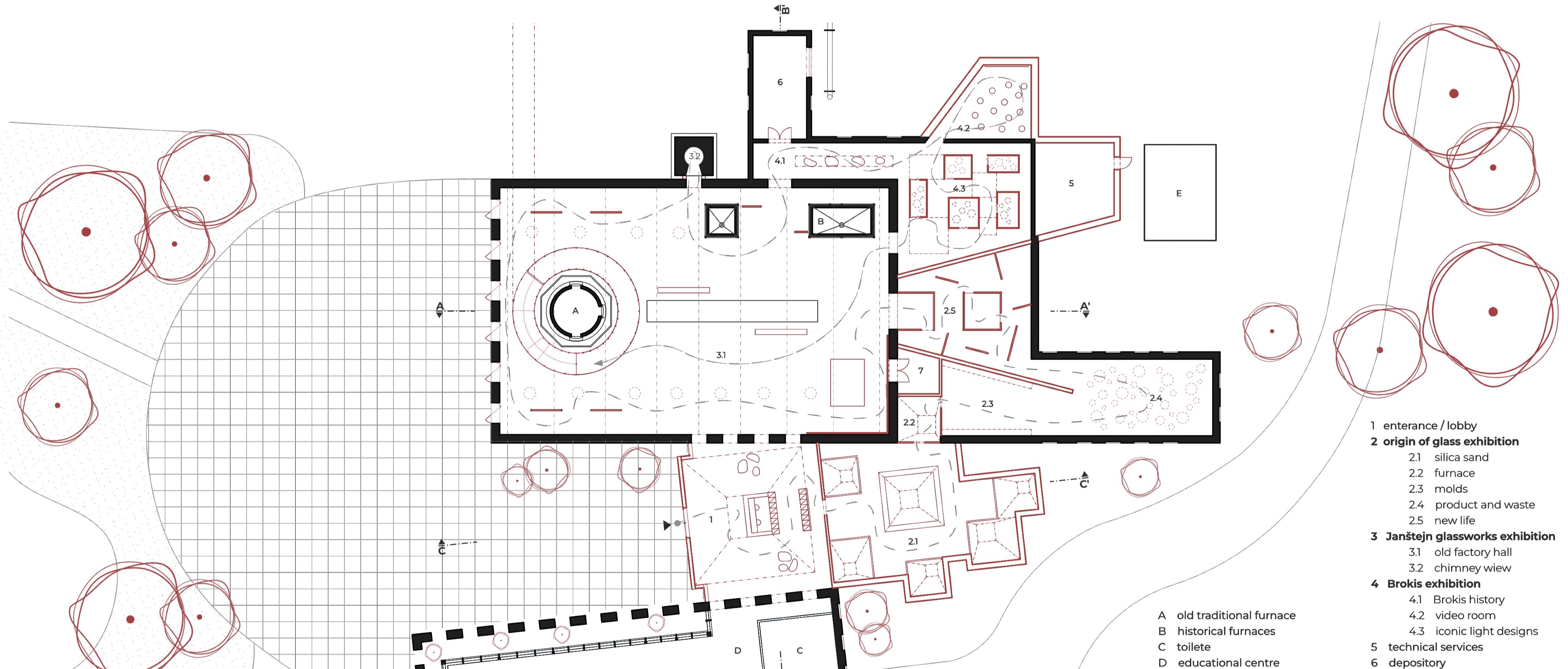


- 01 visitors centre/showroom
- 02 offices
- 03 canteen
- 04 education centre
- 05 museum
- 06 recreation area with accommodation
- 07 accommodation
- 08 main glass production
- 09 BROKIS production
- 10 entrance booth
- 11 storage



Removing and retaining masses defines the core logic of this proposal — over time, the building eroded further from its original state as a grand production hall diminished by the loss of its gable ends and accumulation of extensions. Extensions that served no function were removed, while those offering genuine spatial value were retained. The demolished elements are marked in red, making the layers of transformation legible and honest.

New volumes were added to complete the spatial composition and introduce functions the existing structure could not accommodate. These additions are designed with restraint, respecting the scale and character of the original building while clearly reading as contemporary interventions.



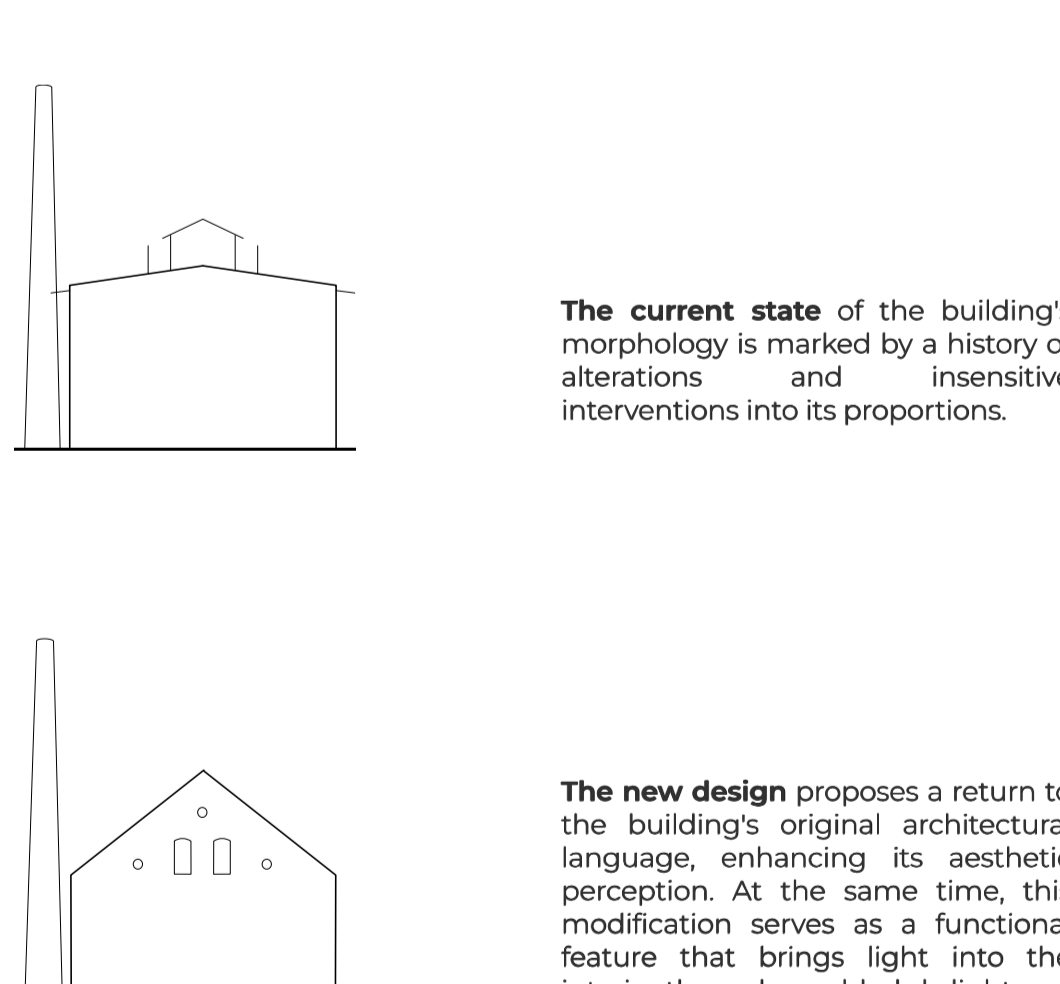
FLOORPLAN | 1:250



- 1 entrance / lobby
- 2 origin of glass exhibition
 - 2.1 silica sand
 - 2.2 furnace
 - 2.3 molds
 - 2.4 product and waste
 - 2.5 new life
- 3 Janstojn glassworks exhibition
 - 3.1 old factory hall
 - 3.2 chimney view
- 4 Brokis exhibition
 - 4.1 Brokis history
 - 4.2 video room
 - 4.3 iconic light designs
- 5 technical services
- 6 dispensary
- 7 furniture storage

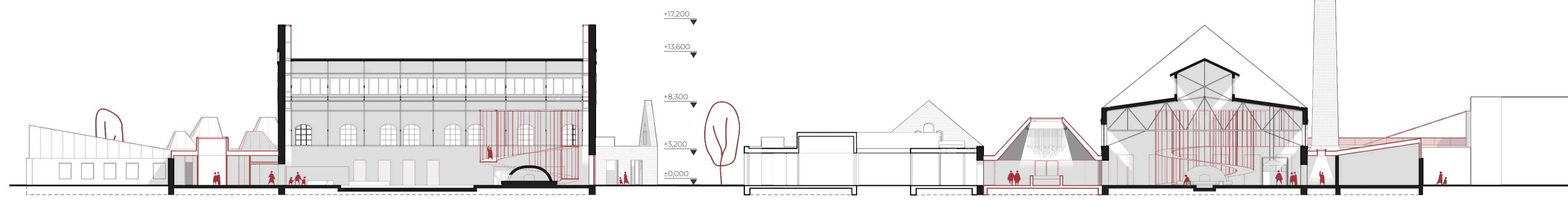
- A old traditional furnace
- B historical furnaces
- C toilet
- D educational centre
- E electrical station

MASSING PRINCIPLES

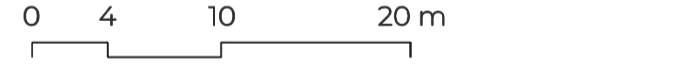


The **current state** of the building's morphology is marked by a history of alterations and insensitive interventions into its proportions.

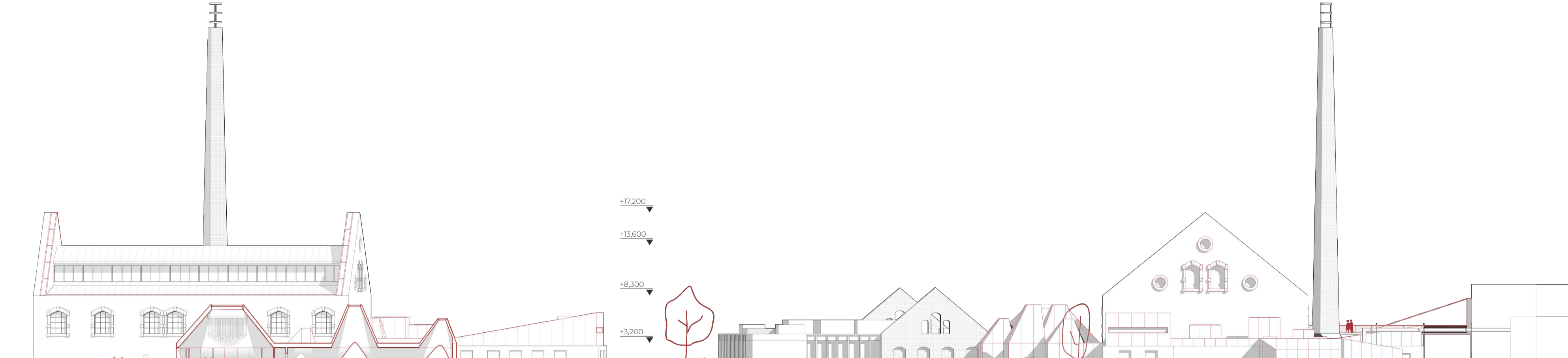
The **new design** proposes a return to the building's original architectural language, enhancing its aesthetic perception. At the same time, this modification serves as a functional feature that brings light into the interior through a gabled skylight.



SECTION A-A' | 1:400



SECTION B-B' | 1:400



SECTION C-C' | 1:400



SOUTHWEST ELEVATION | 1:400



NORTHEAST ELEVATION | 1:400

EASTSOUTH ELEVATION | 1:400

- STAINLESS STEEL**
Brushed stainless steel is a unifying element throughout the museum building as well as the entire BROKIS campus.
- BROKIS GLASS**
BROKIS glass panels are featured on the pivot doors of the hall and across exhibitions.
- BROKIS GLASS TERRAZZO**
BROKIS Terrazzo flooring runs continuously across both the historic hall and the newly constructed addition.
- MATERIALITY**
- BLOOM**
used in: entrance foyer
- SHADOWS**
used in: iconic light design exhibition
- FLUTES**
used in: iconic light design exhibition
- SELECTED BROKIS LIGHTING**

