



BROKIS Visitors centre / Showroom

bc. Adam Konec
129DSM2
LS 2025/2026



Arch. Marco Bruno Andrade Maio / Ing. arch. Adam Bohaty, Ph.D. / Ing. arch. Hasan Moeed, Ph.D.

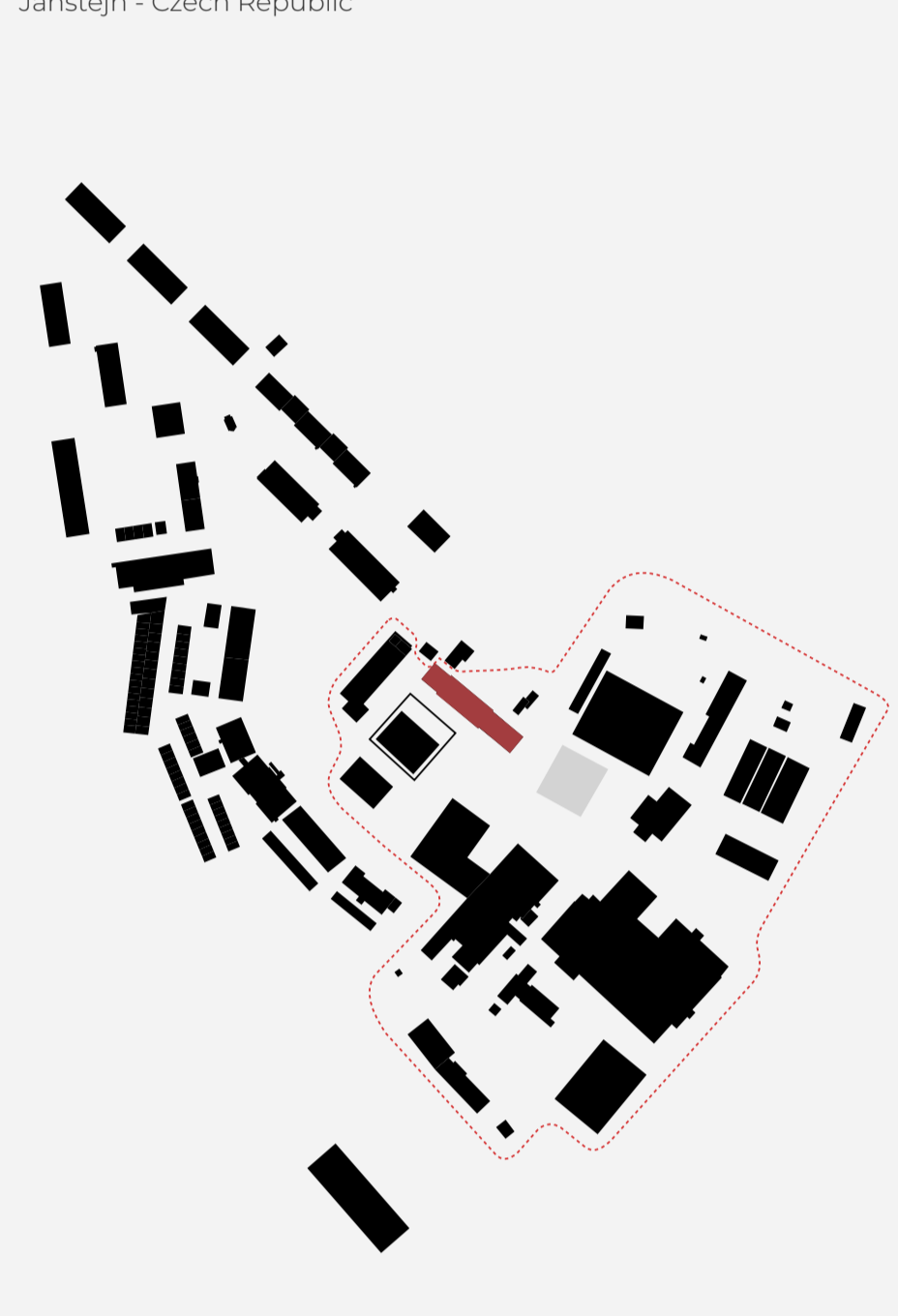
VISITORS CENTRE

The **BROKIS Visitors Centre** and showroom serve as the primary gateway into the Janštejn production area. The architectural design sensitively transforms the original barn-like structure, preserving its industrial character while enriching it with an entirely new spatial experience. The focal point of this concept is the idea of "breaching the light". This moment is materialized through a monumental circular void cut into the building's mass, functioning as the main entrance portal and instantly drawing the visitor into the world of glassmaking art.

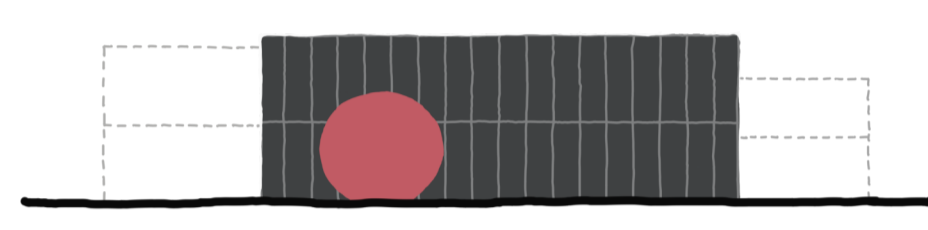
Filled with red, bacelit Brokis Glass, this striking entrance creates a powerful contrast with the building's rough envelope, evoking the magical experience of stepping directly into the glowing heart of a glass furnace. The purity of form and the minimalist geometry of the circle, which may subtly recall Japanese Zen aesthetics, serve primarily to underscore the honest Czech glassmaking tradition with maximum elegance and respect.

SCHWARZPLAN

Janštejn - Czech Republic

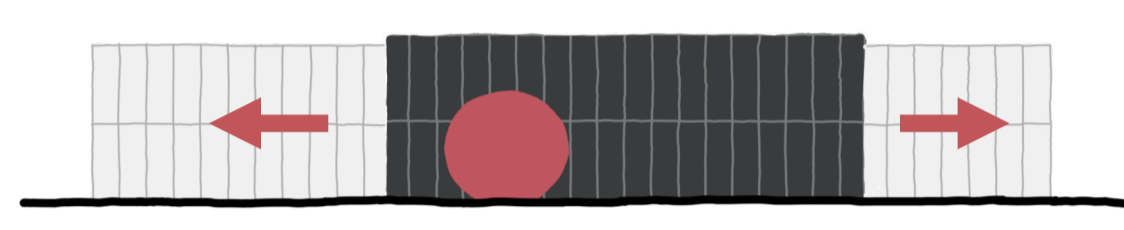


CONCEPT



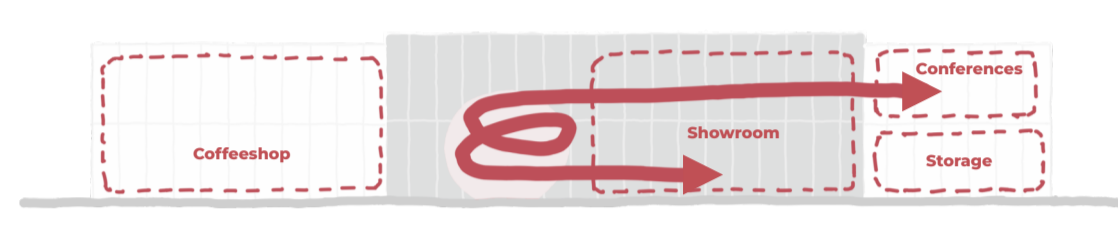
Gateway

Acting as a gateway to the complex, the building features a monumental entrance that intuitively welcomes visitors. The circular opening is directly inspired by the organic shapes and subtle Japanese aesthetic of BROKIS products.



Extensions

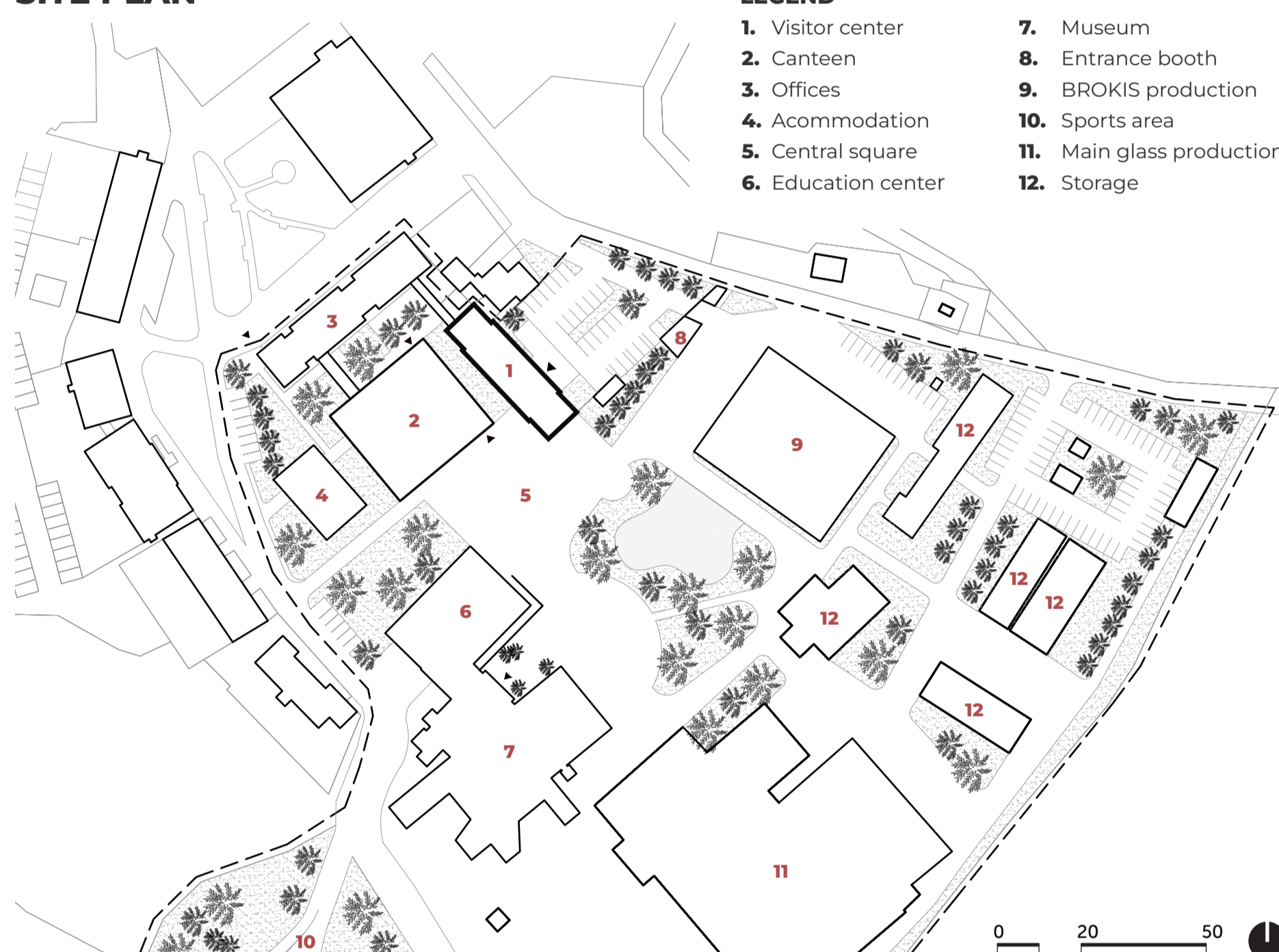
The original main building is extended in both directions, naturally enclosing the entrance area. This thoughtful expansion guides visitors and ensures effortless orientation.



Functionality

The main entrance opens into the Visitors Centre, serving as a showroom and a representative space for smaller gatherings. The facility is fully equipped with a new cafe, restrooms, and storage.

SITE PLAN



LEGEND

- 1. Visitor center
- 2. Canteen
- 3. Offices
- 4. Accommodation
- 5. Central square
- 6. Education center
- 7. Museum
- 8. Entrance booth
- 9. BROKIS production
- 10. Sports area
- 11. Main glass production
- 12. Storage



CURRENT CONDITION



A classic Czech barn-type building with a saddle roof

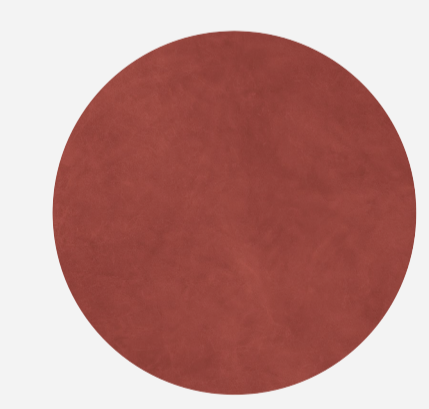


White lime render and clay roof tiles



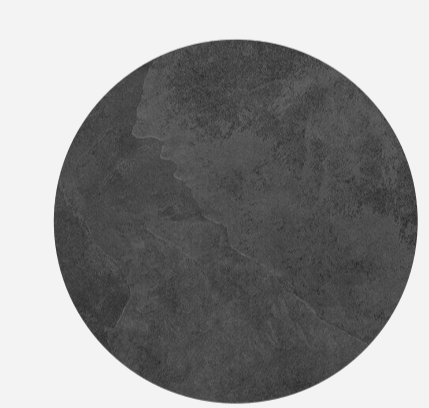
An interior featuring exposed timber roof trusses and brick walls

NEW MATERIALS



RED-FINISH METAL

The new structures utilize modern, neutral materials such as stainless steel and CLT frames. In stark contrast, the main visual elements are crafted from striking red steel.



CEMENT-FIBER PANELS

The existing structures are cleaned to highlight the beautiful wooden roof framing and old exposed brick walls. Externally, the volume is wrapped in a rugged fiber-cement facade.



MASSIF

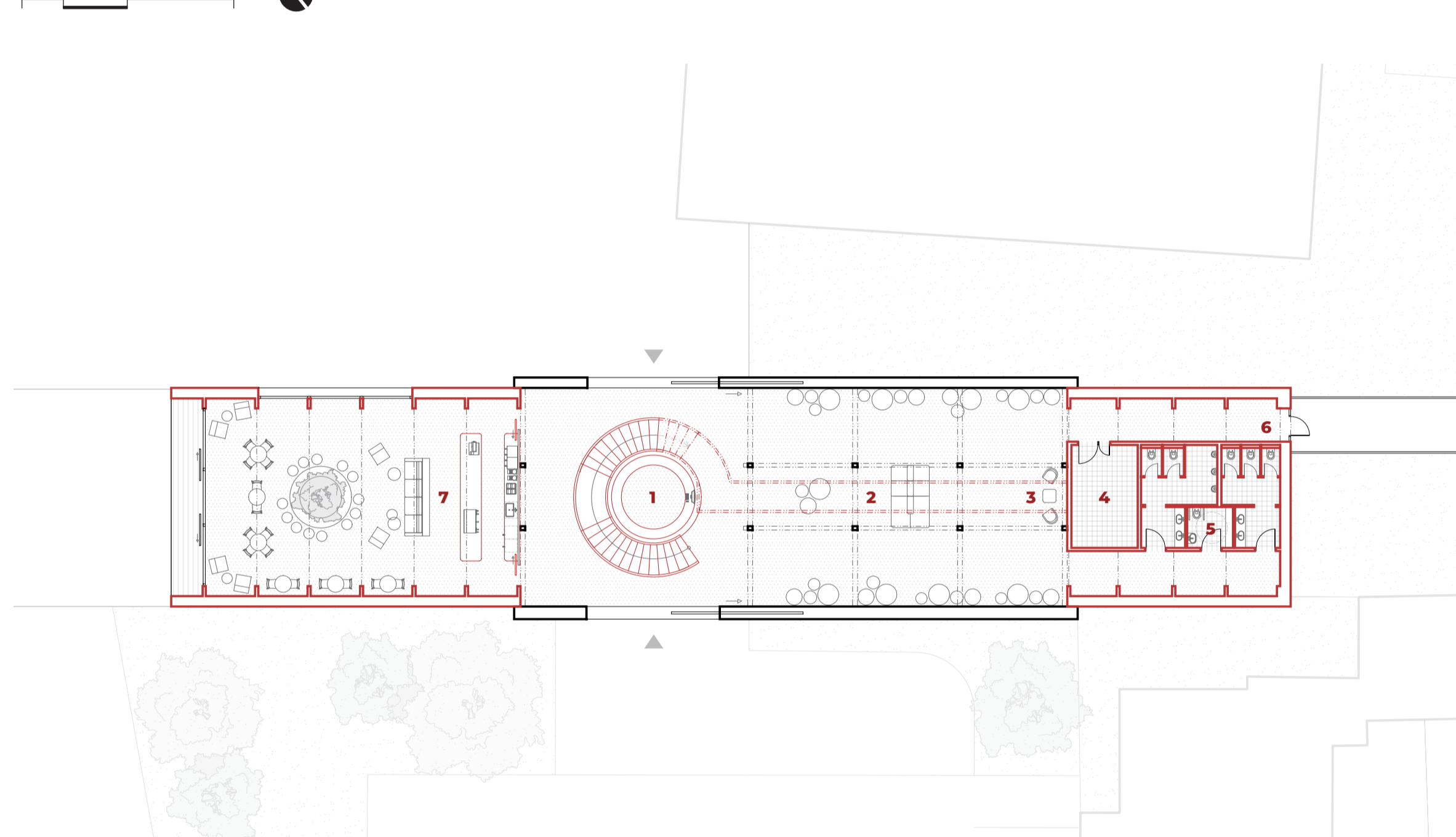
Massif glass is used to partition the showroom and the cafe. Fascinated by the visibility of the material's making process and its intricate internal details, I chose to feature it across a full wall.

MASSIF PROCESS

- SAND**
The base material for glassmaking is silica sand, which, when mixed with specific additives, forms a batch that is melted in a glass furnace to create molten glass.
- ENAMEL**
In the glass furnace, hot molten glass is used for gathering onto a blowpipe and for hand-blowing glass. After a certain period, there is not enough molten glass left in the furnace, and it needs to be replaced. The remaining glass is removed from the furnace resulting in massif, which can then be reused for recycling.
- MASSIF**
The massif fragments produced at Janštejn Glassworks are carefully sorted and stored separately by colour.
- STORAGE**
Once cooled, the massif is crushed into fragments with varying shades and colours.
- MELTING**
The crushed massif fragments are placed into a mould and melted in a fusing furnace.
- PANELS**
During melting, the massif fuses into a unique panel with an entirely unique colour composition.

FLOORPLANS

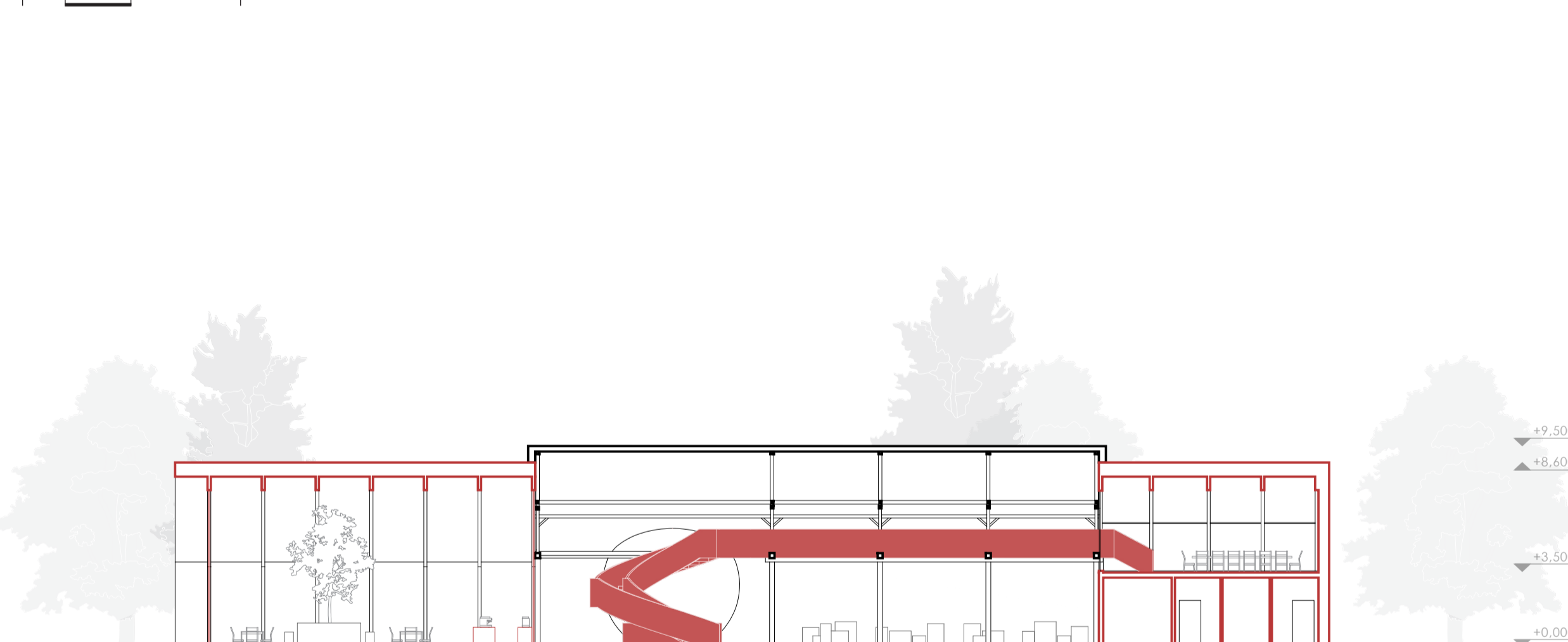
1st



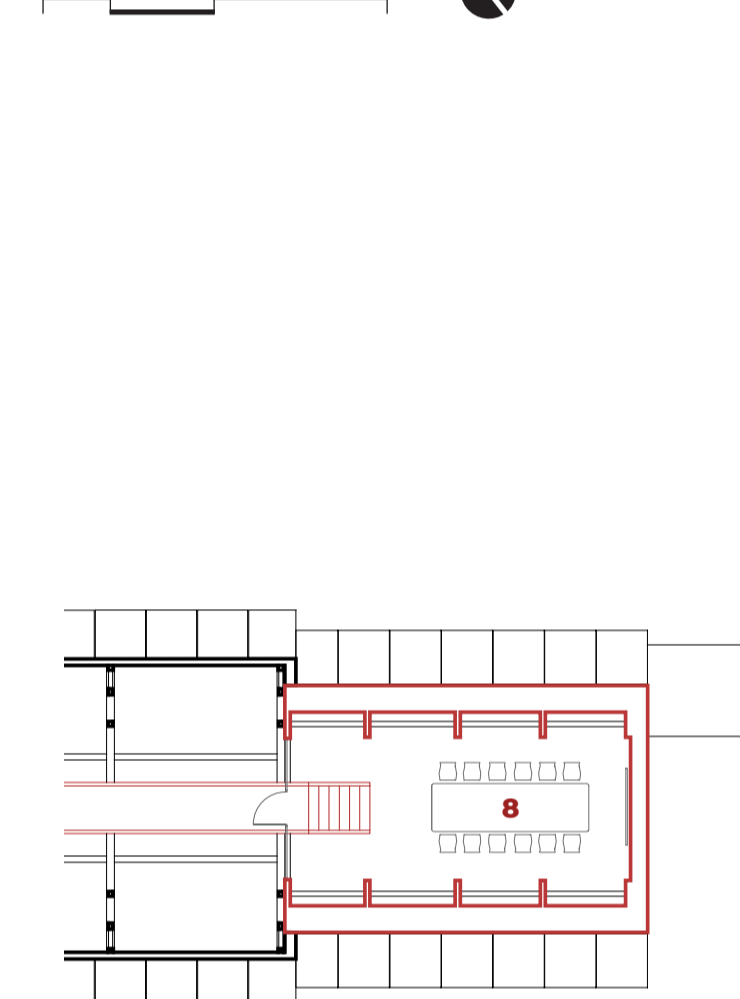
LEGEND

- 1 Reception desk
- 2 Showroom
- 3 Public presentations
- 4 Storage room
- 1 Hygiene W/M/Dis
- 2 Office entrance
- 3 Coffee shop
- 4 Conference room

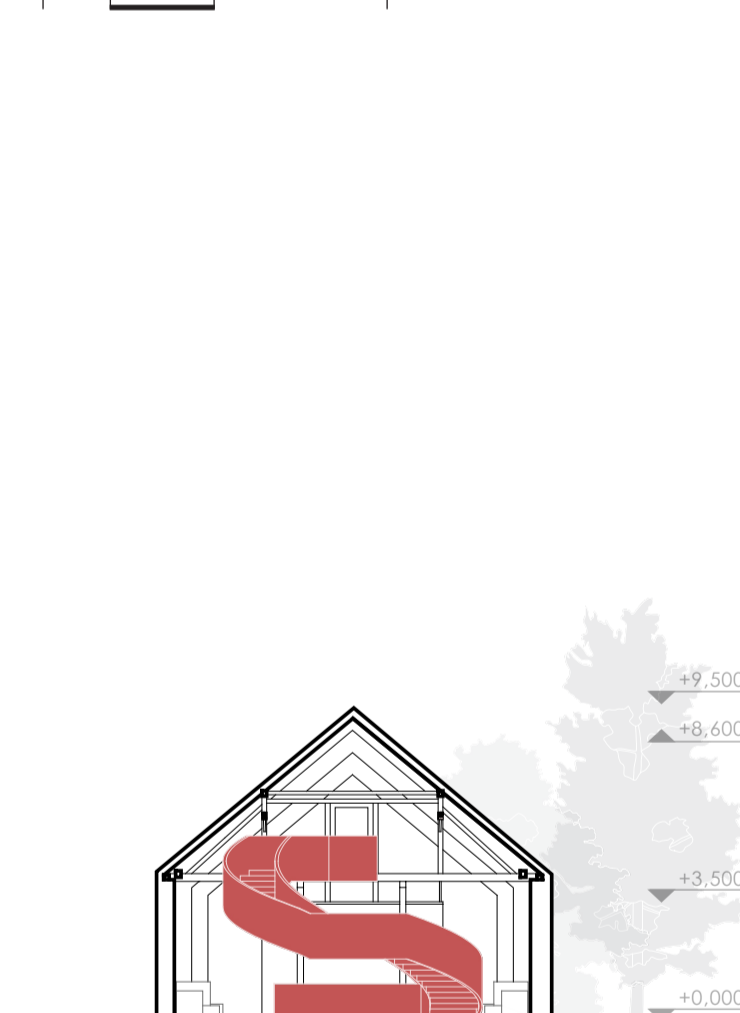
SECTION A-A



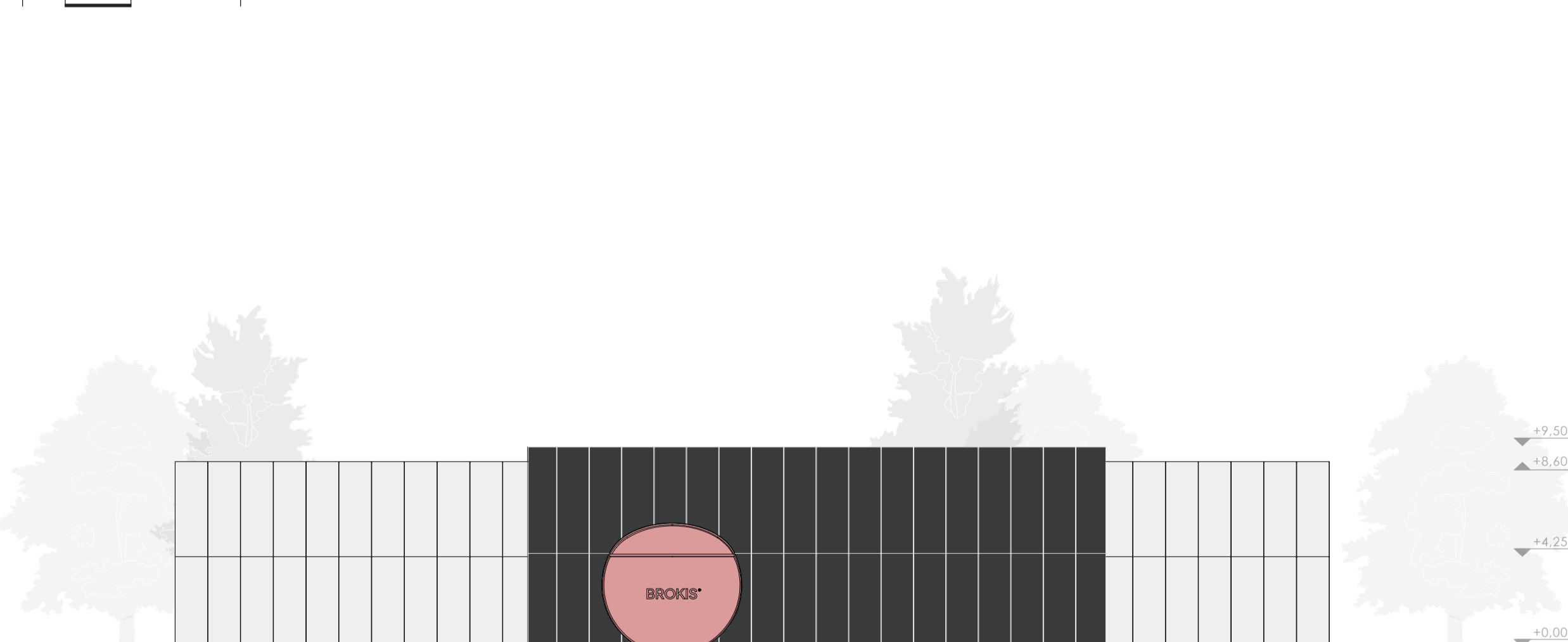
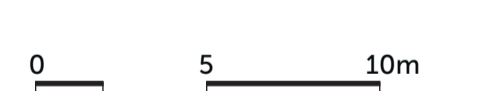
2nd



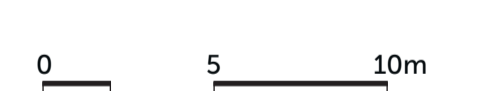
SECTION B-B



ELEVATION 1



ELEVATION 2



DESIGNING CONTRASTS

As a bridge between Czech glassmaking tradition, the project draws inspiration from the Japanese mastery of detail and material harmony. The rough exterior of the traditional barn and the flawlessly polished red glass portal create a striking contrast. Raw industrial heritage merges with refined minimalism, creating a space where roughness and fragility coexist in perfect balance.

誠実なチェコガラスの伝統に根ざしつつ、日本のデザインにおける細部へのこだわりと素材の調和から着想を得ています。伝統的な納屋の外観と、完璧に磨かれた赤いガラスのポータルが鮮やかな対比を生み出します。無骨な産業遺産と洗練されたミニマリズムが融合し、粗さと脆さが完璧なバランスで共存する空間です。

The tradition of Czech glass infused with a Japanese touch. The tradition of Czech glass infused with a Japanese touch. 和のテイストを吹き込んだチェコガラスの伝統