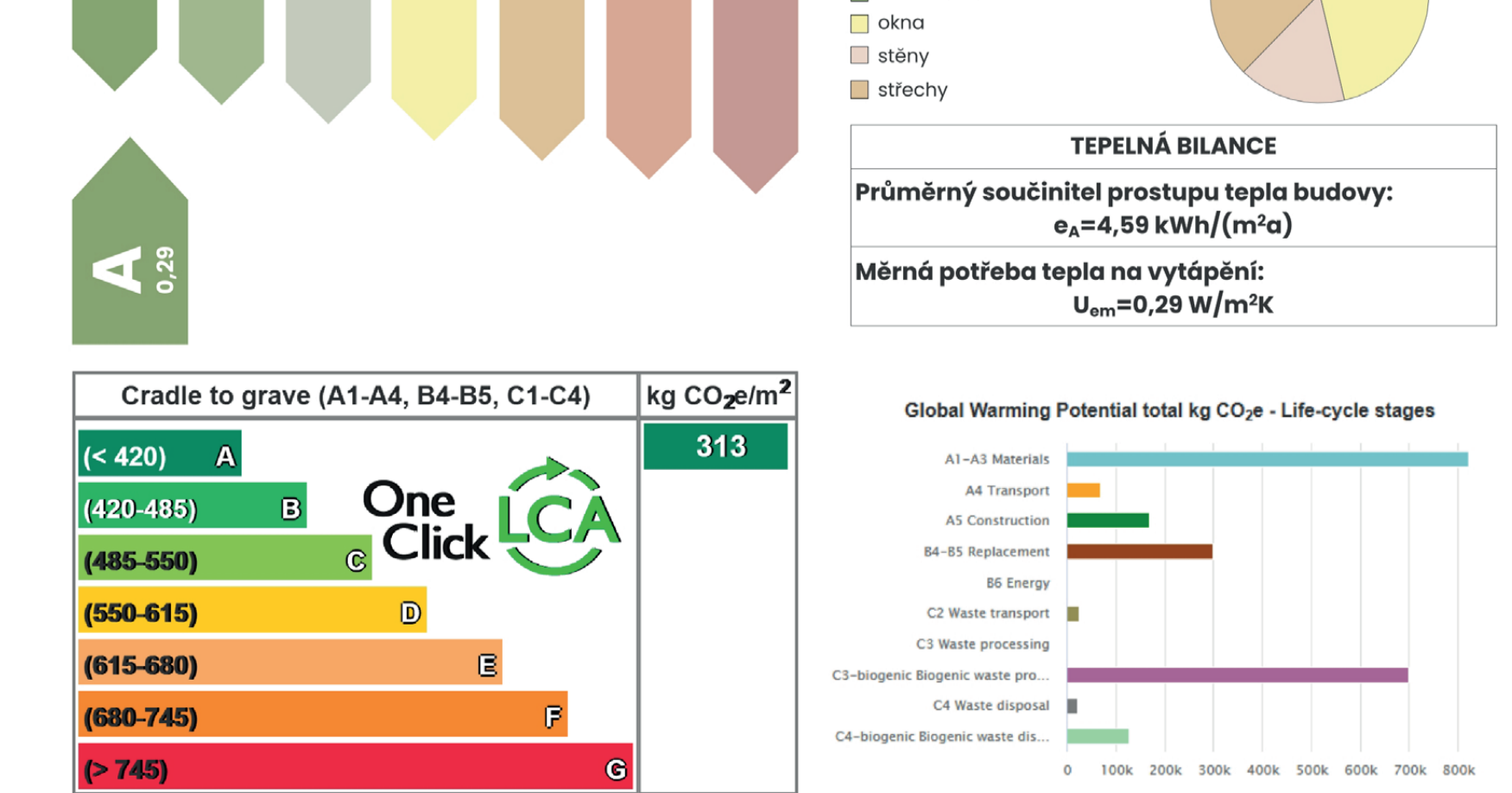
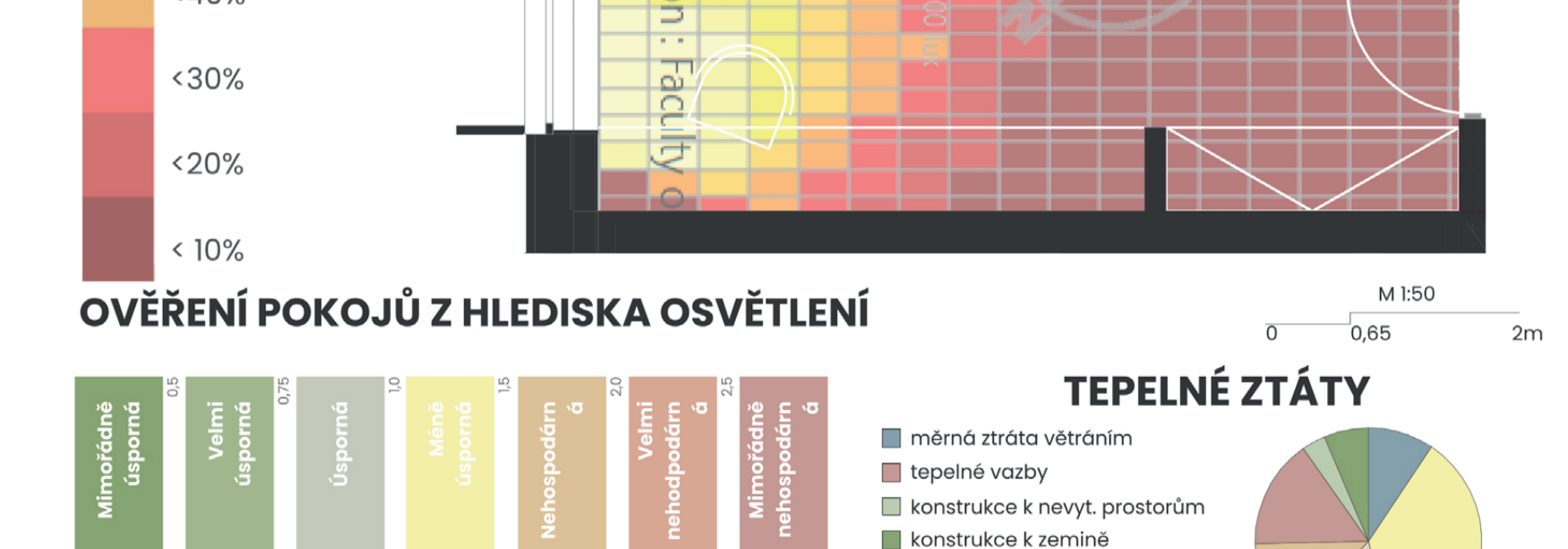
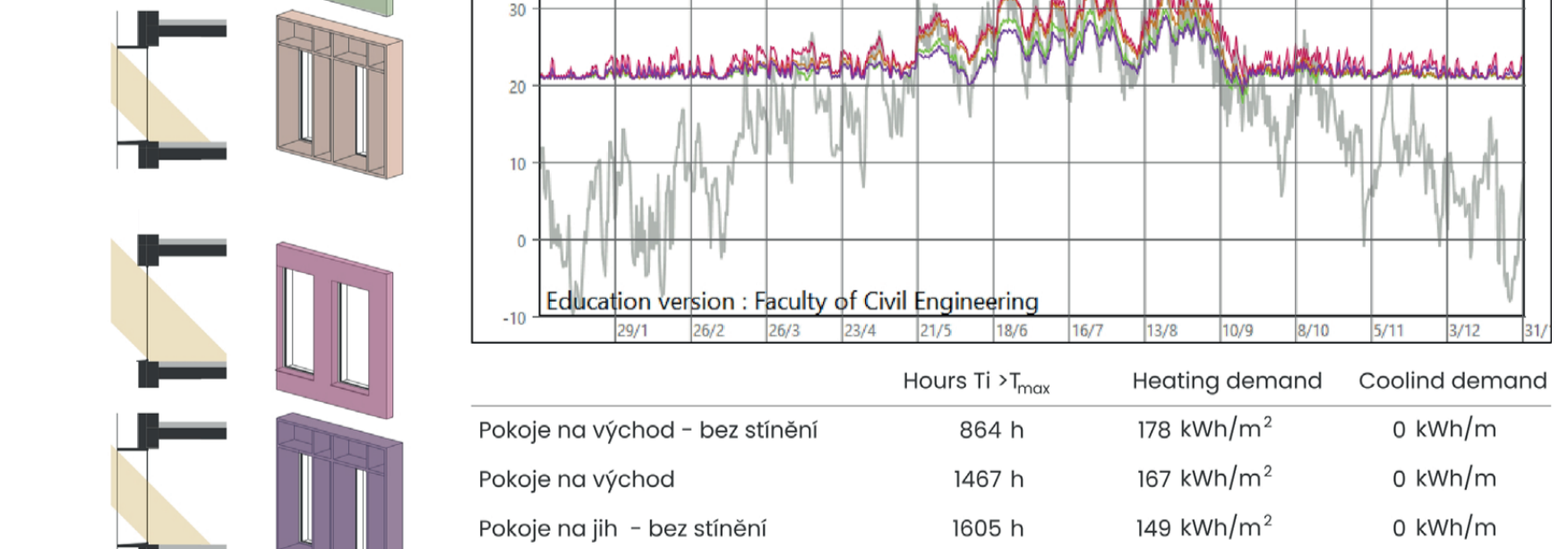
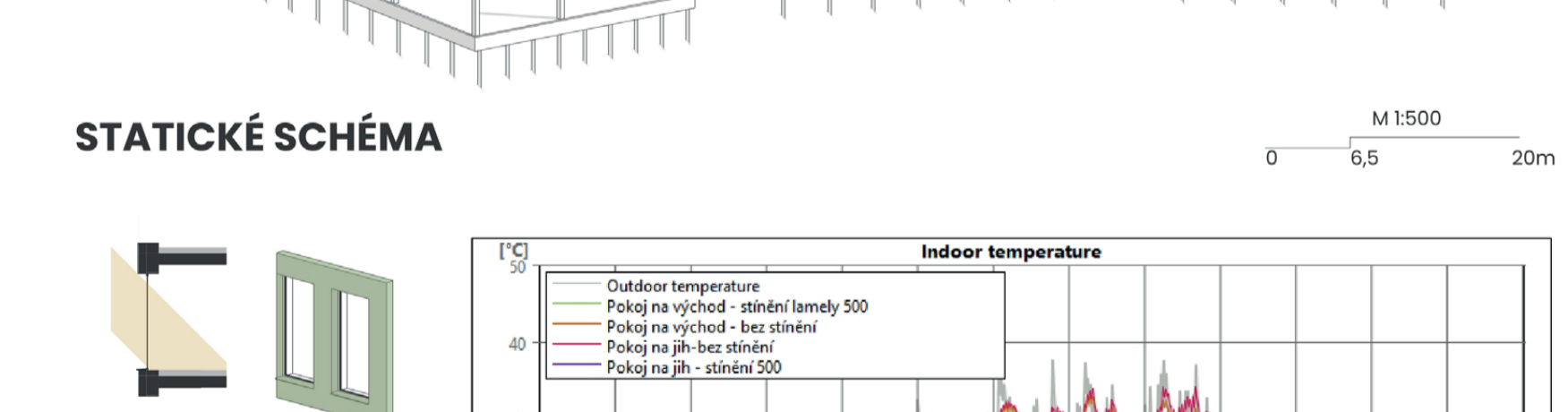
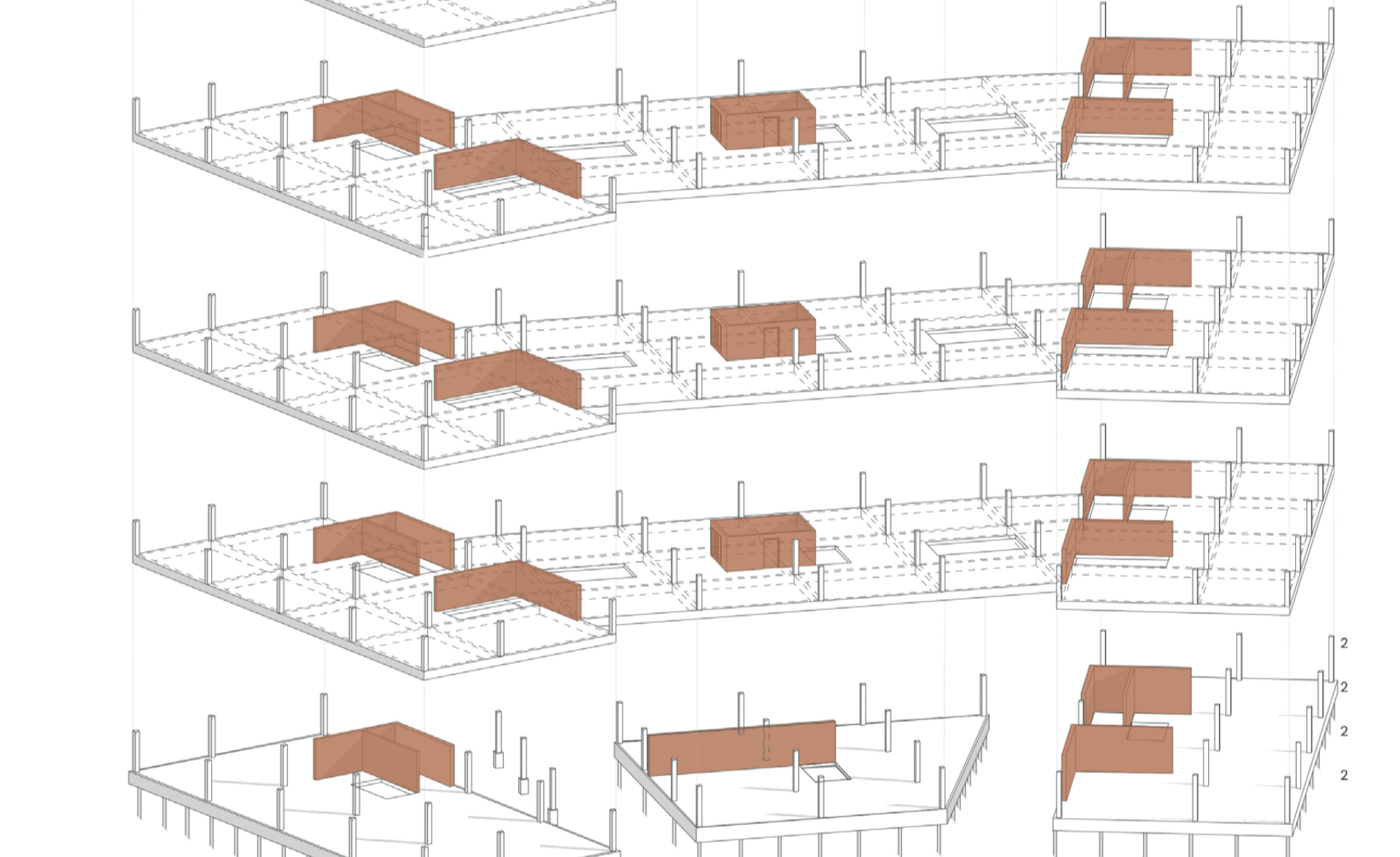
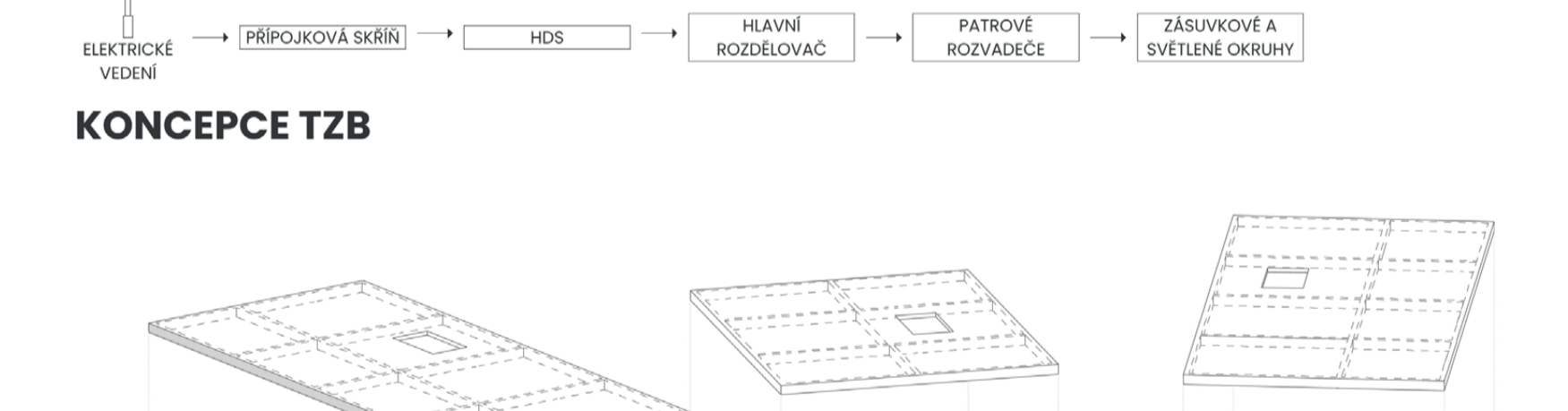
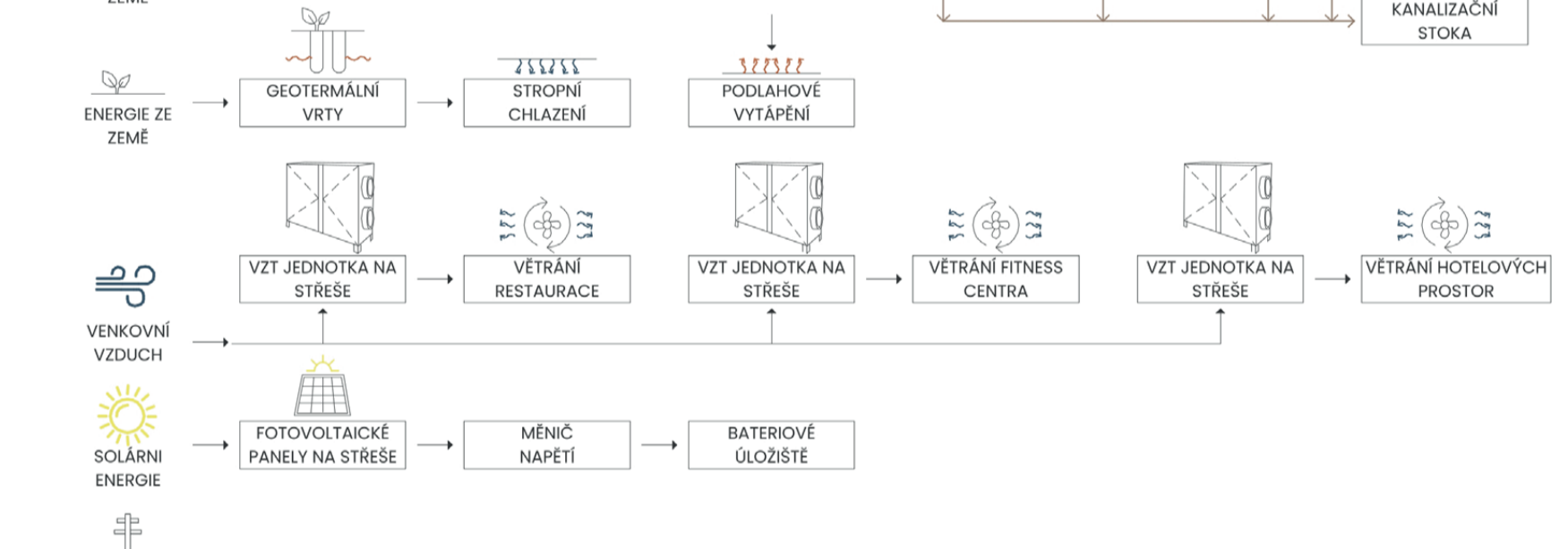
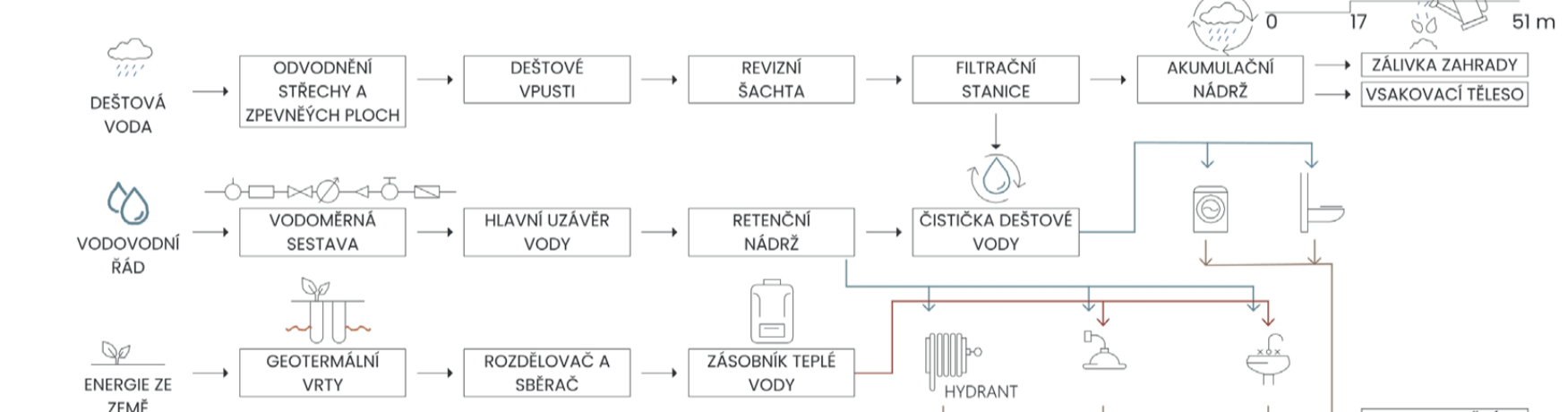
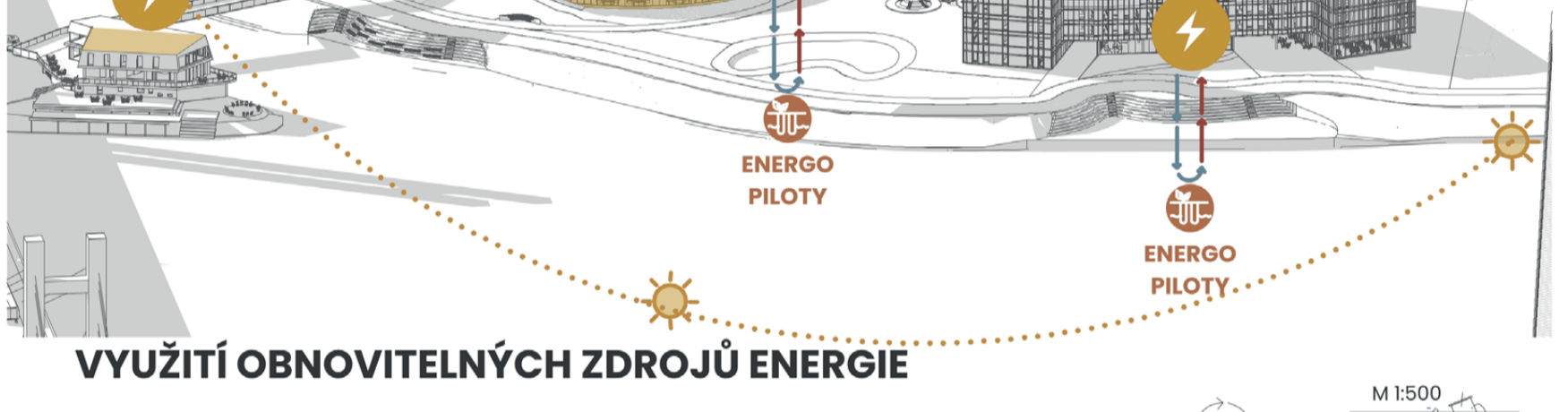
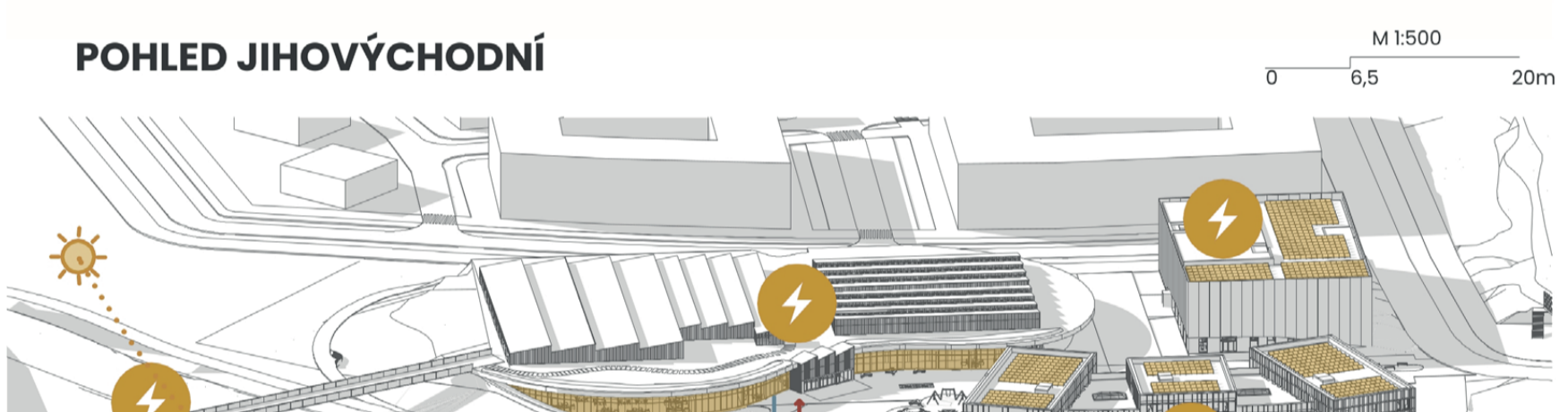
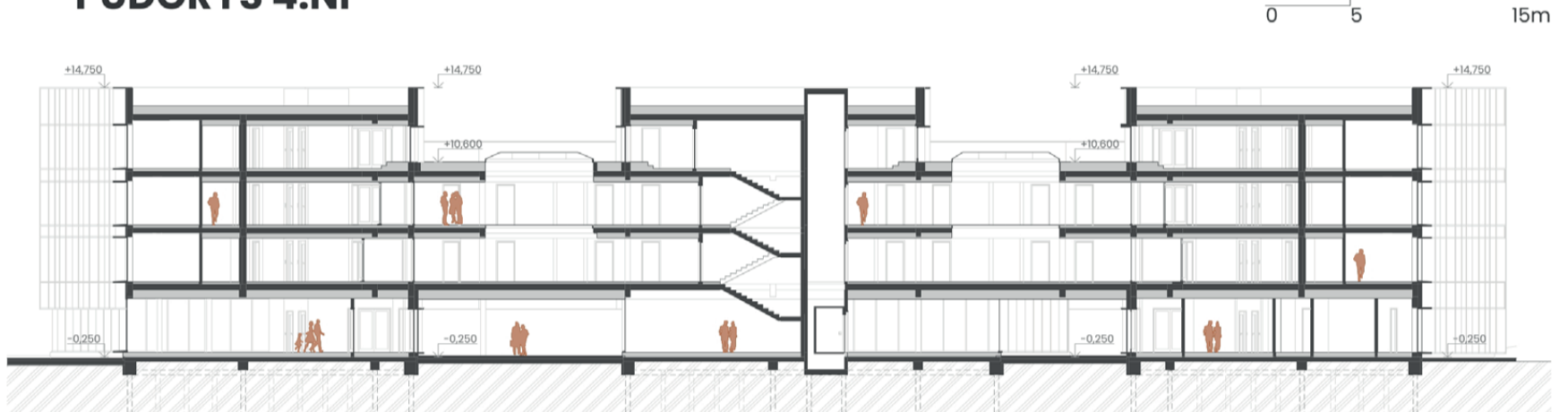
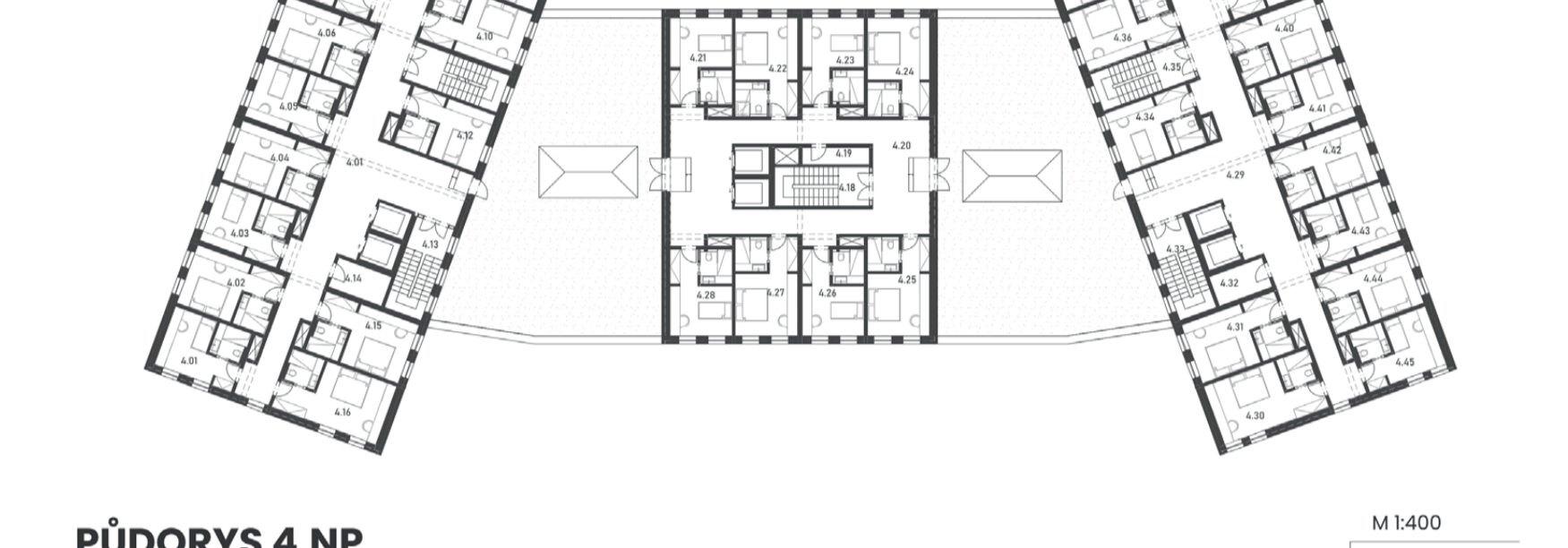
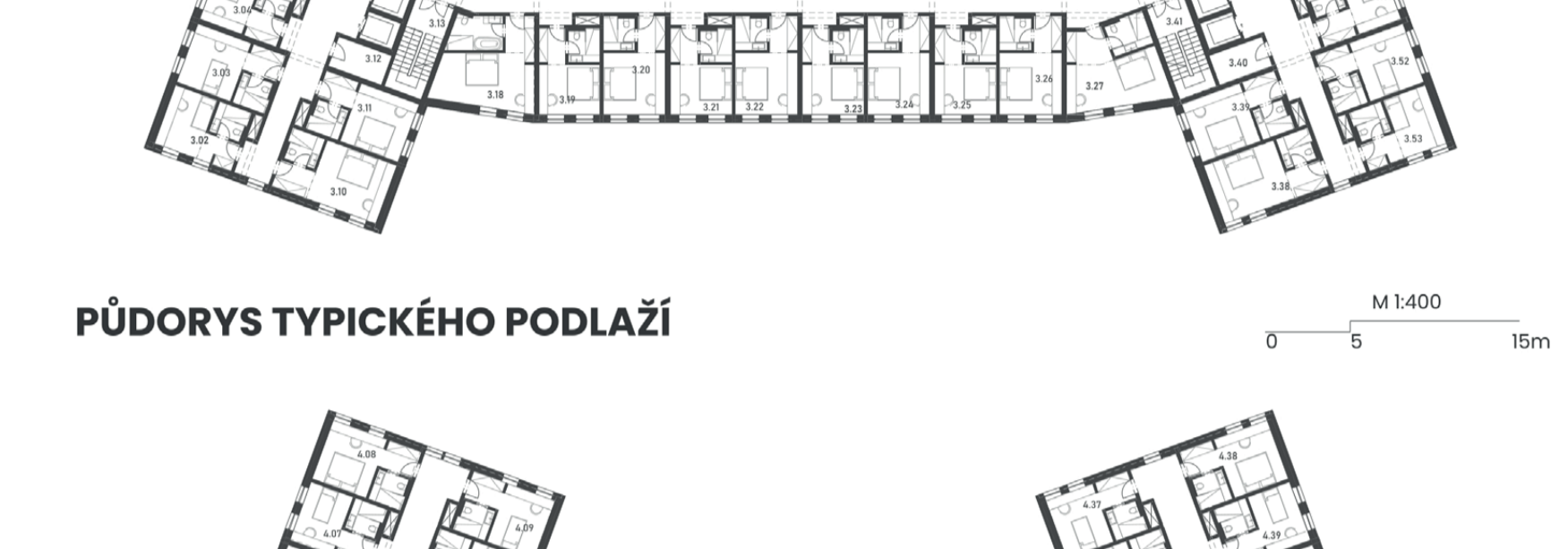
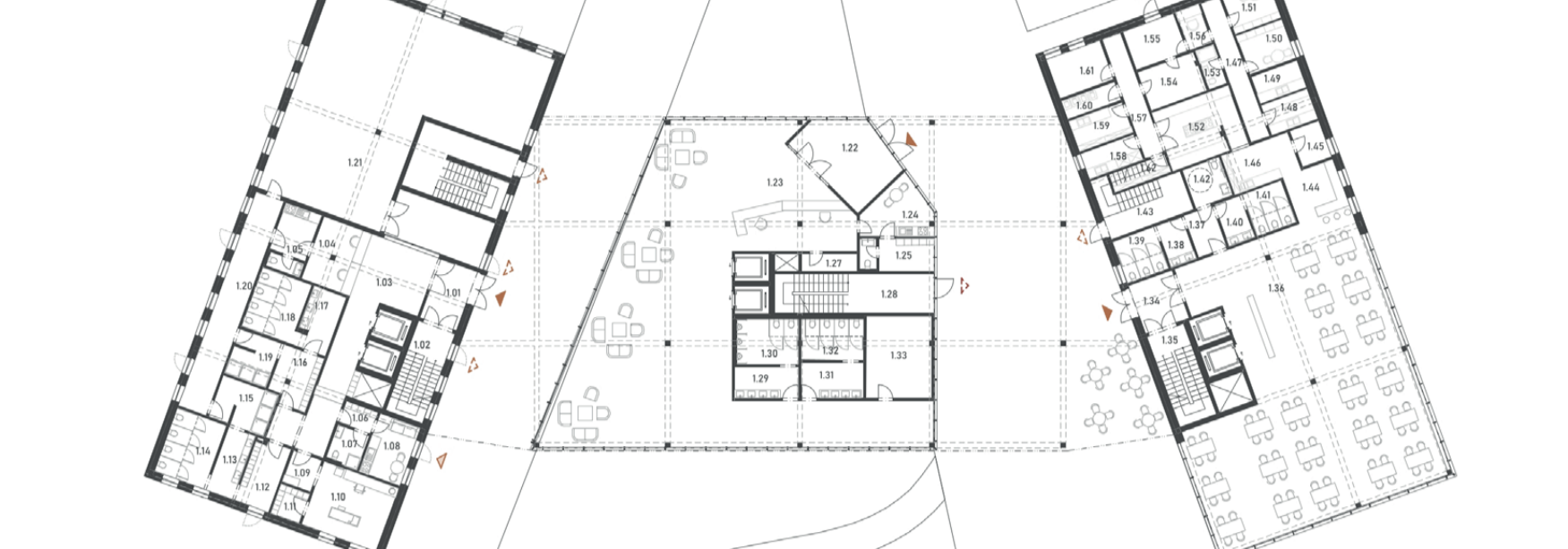




Centrum sportu s ubytováním u řeky Sávy
mezinárodní soutěž Architecture Student Contest Saint-Gobain 2026
Bělehrad, Srbsko

Bc. Markéta Pipková
AAKA - Stark, Kalivoda, Novák
Katedra architektury, FSV ČVUT v Praze, LS 25/26



Požadavky ČSN 73 0532-02/2010

Hlučný prostor (místnost zdroje zvuku)	Požadavky na zvukovou izolaci [dB]	Stěny	Stropy
Zařízení pro předchozí ubytování - lažičkový prostor prokoje hostů	47	52	52
Společenské provozní prostory	45	52	52
Restaurace a provozní s prozorem do 2200 hod	57	57	57
Restaurace a provozní s prozorem i po 2200 hod	62	62	62

