

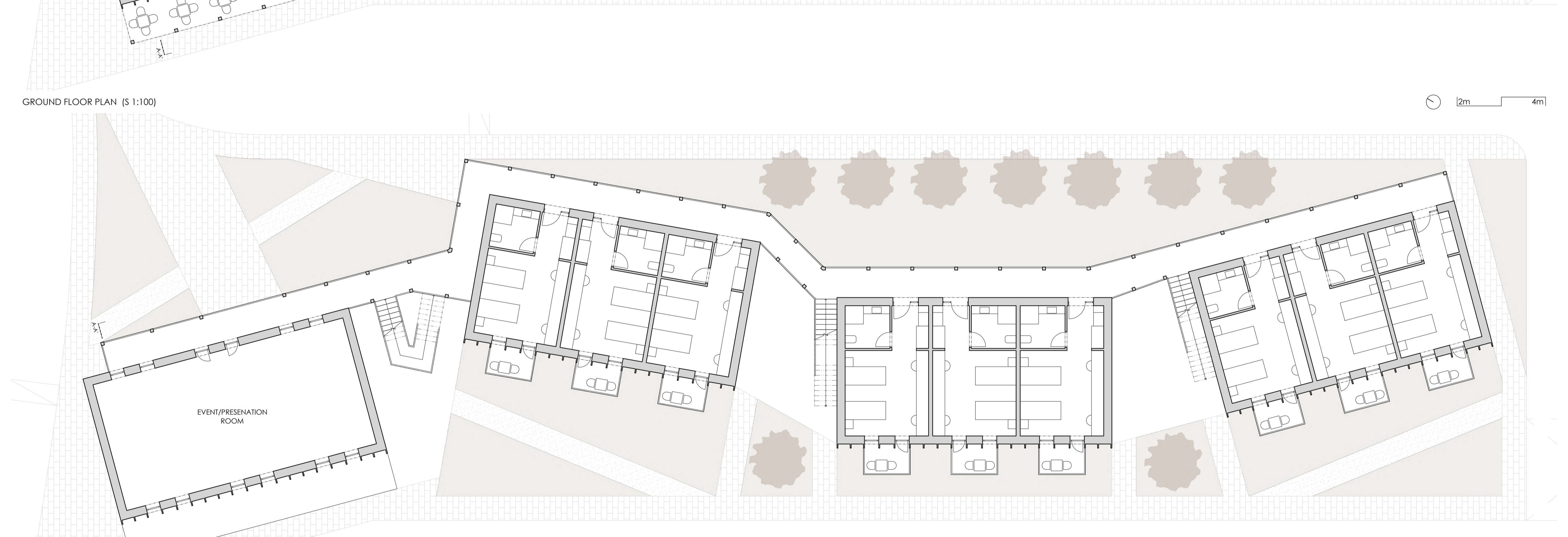
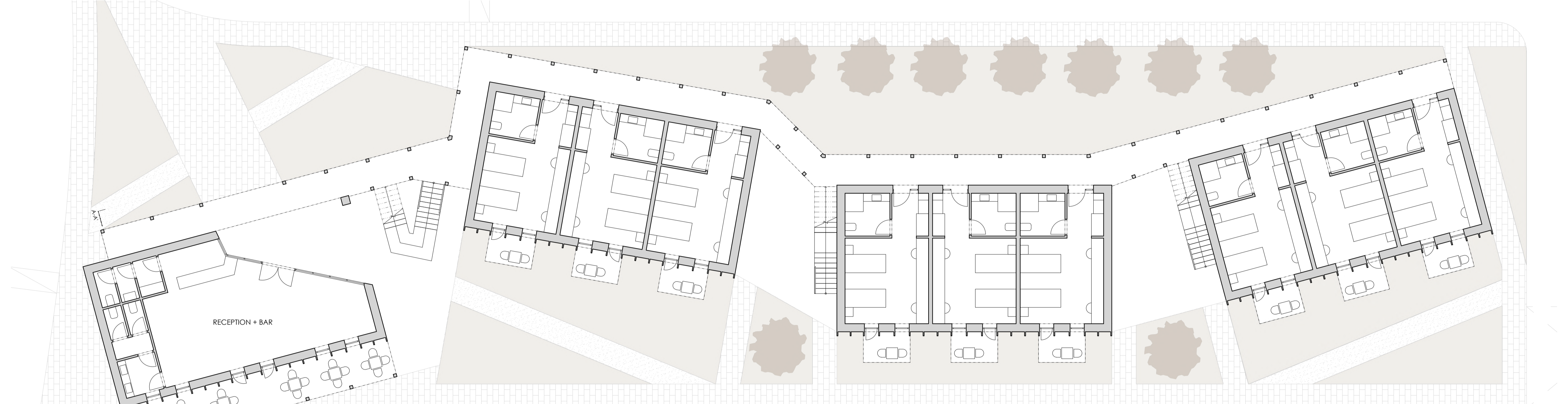
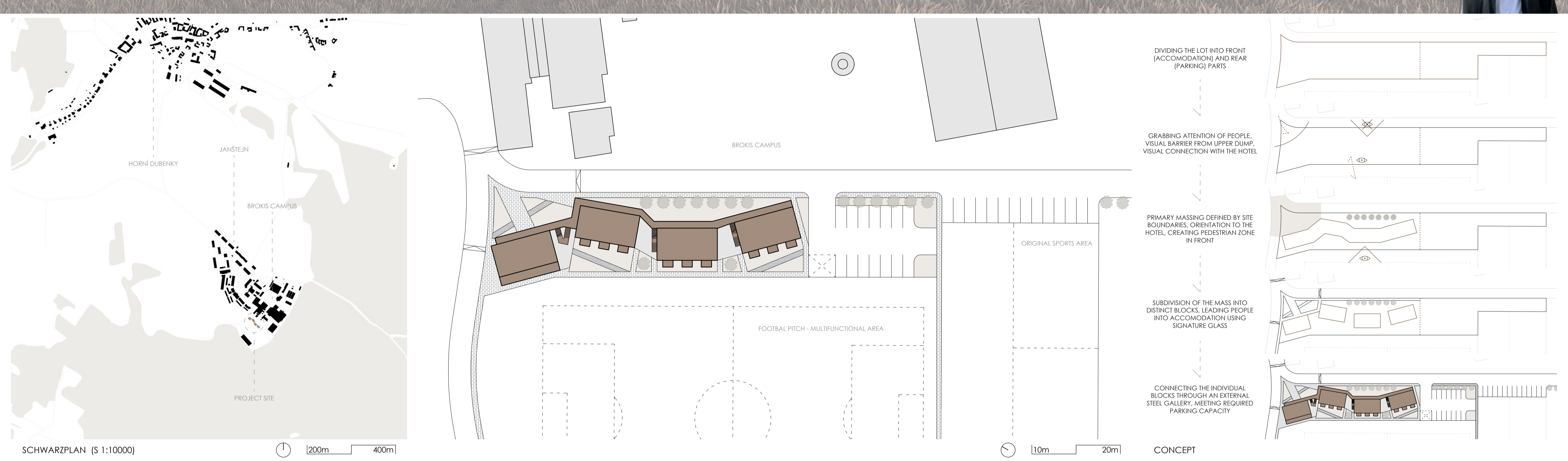


FSV ČVUT / K129 / STUDIO MAIO | BOHATÝ | MOEED / DSM2 / SS 2025 - 2026

MUSEUM OF LIGHT - BROKIS - JANŠTEJN ACCOMMODATION



TOMÁŠ FRYNTA



PROJECT BRIEF AND CONTEXT
 The subject of the proposal was the reconstruction and expansion of the capacities of the Brokis company for the coming years. The complex is located in Janštejn, a specific settlement built around the local glassworks (now Sklovo Janštejn), situated approximately one kilometer south of the village of Horní Dubenky in the Jihlava district (Vysočina Region).
 The main objective of the entire project was to create better facilities for both employees and visitors. In terms of the program, the primary focus was on creating a space where the public could experience various glassmaking techniques through single-day and multi-day programs. Within our working group, we focused on four facilities: a visitor center, an educational center, a hotel, and supporting accommodation. My specific task was the design of the supporting accommodation building.

ARCHITECTURAL CONCEPT AND LAYOUT
 The resulting design of the accommodation building yields a final capacity of 36 people across 18 double rooms. The proposal also includes 28 parking spaces, which partially serve the needs of the neighboring hotel.
 The design places strong emphasis on urban layout. I shaped the entrance area to naturally capture the attention of onlookers, guiding them directly to the reception through an element made of our "signature glass". The reception also functions as a bar, while the second floor offers a versatile space for presentations, events, or potential workshop expansions. The core principle of the design became the sophisticated articulation and placement of the block masses. Thanks to this, I succeeded in creating a natural barrier using trees on the eastern side, and forming a pleasant semi-private park on the western side facing the hotel and the multi-functional sports pitch.

TECHNICAL SOLUTION
 The building features a load-bearing wall system made of precision clay blocks combined with mono-lithic reinforced concrete floor slabs. This combination ensures high structural stability, optimal thermal mass, and an efficient construction workflow with minimal downtime.
 Interior spaces are divided by non-load-bearing gypsum board partitions. This airy construction system speeds up installation and reduces the dead load on the slabs. The partition composition strictly complies with soundproofing and acoustic insulation requirements between rooms.

MATERIALS

- STAINLESS STEEL
- CLAY MASONRY
- CONCRETE
- GLASS
- SIGNATURE GLASS

MAIN CONCEPT SIGNATURE GLASS
 To visually connect all four proposed buildings, we chose to use a specific type of glass manufactured directly in the Janštejn glassworks. This element serves as a unifying aesthetic link throughout the complex while acting as a direct showcase of the craftsmanship and brand identity of Brokis.

