



# BROKIS Canteen

bc. Miroslav Markov  
1205M2  
LS 2025/2026

Arch. Marco Bruno Andrade Maio / Ing. arch. Adam Bohaty, Ph.D. / Ing. arch. Hasan Moeed, Ph.D.



## GLASSWORKS CAMPUS JANŠTEJN

Concept and new perception of the campus

**Purification of Form and Spatial Transformation.** The core principle of the design is a radical transformation and revitalization of the existing canteen building within the glassworks campus. The original mass has undergone a process of spatial purification – both the exterior and the interior layout have been stripped of redundant structures. This purification of the volume uncovers the building's hidden potential, generating a generous, open space that significantly exceeds its original capacity. The object thus gains a new, airy identity that reflects modern standards for community and workplace facilities within the campus.

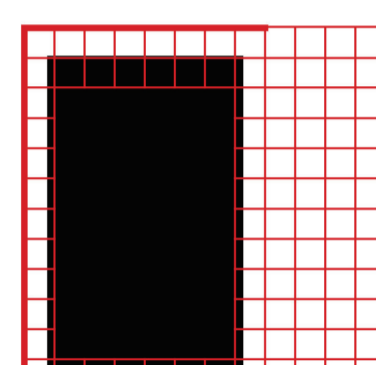
**Structural Envelope and Fluidity of Operation.** An elegant metal structure is grafted onto the purified core of the building, functioning as a multifunctional spatial regulator. The key element is a fully open terrace that extends the indoor operations into the dimension of outdoor dining. Thanks to a system of variable sliding panels, the terrace achieves a high degree of flexibility, it can be transformed, closed off, and dedicated either exclusively to the public or, conversely, integrated into a private zone for office employees. In areas where the structure does not expand into a terrace, it transitions into a pragmatic and clean line of service corridors and an accessible ramp. Architectural detail intertwines with uncompromising functionality, creating a harmonious link between the industrial heritage of the site and its new, dynamic operation.

## CONCEPT



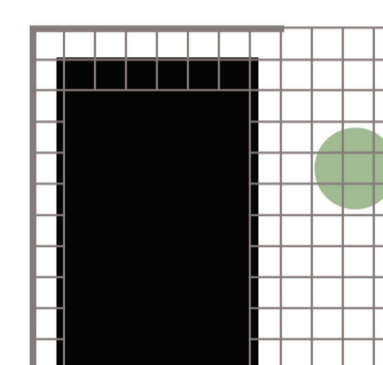
### ORIGINAL VOLUME

Simplification of the primary mass through the removal of the entrance and the purification of the interior space.



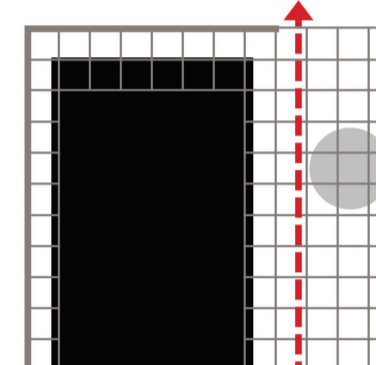
### ADDITION

Extension of the primary mass through a metallic structure that forms the corridors and a terrace, including integrated shading solutions.



### GREEN ELEMENT

Integrating a planter into the terrace, creating a contrast with the industrial character of the glassworks complex.



### PASSAGE

The terrace also acts as a corridor connecting the public area with the office building, with the option to close off this passage as needed.

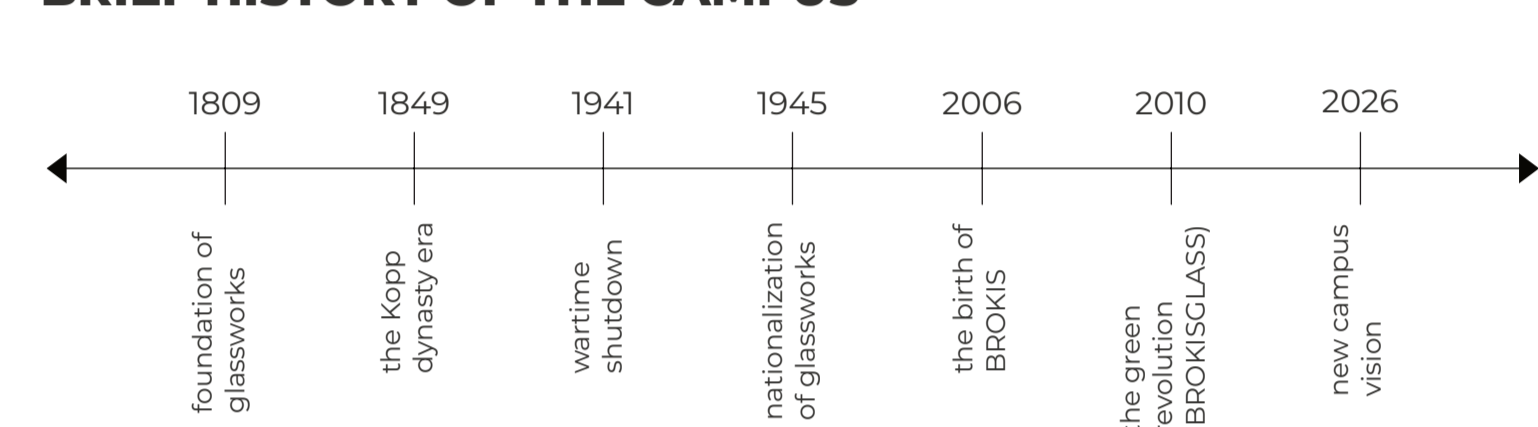
## SITE PLAN



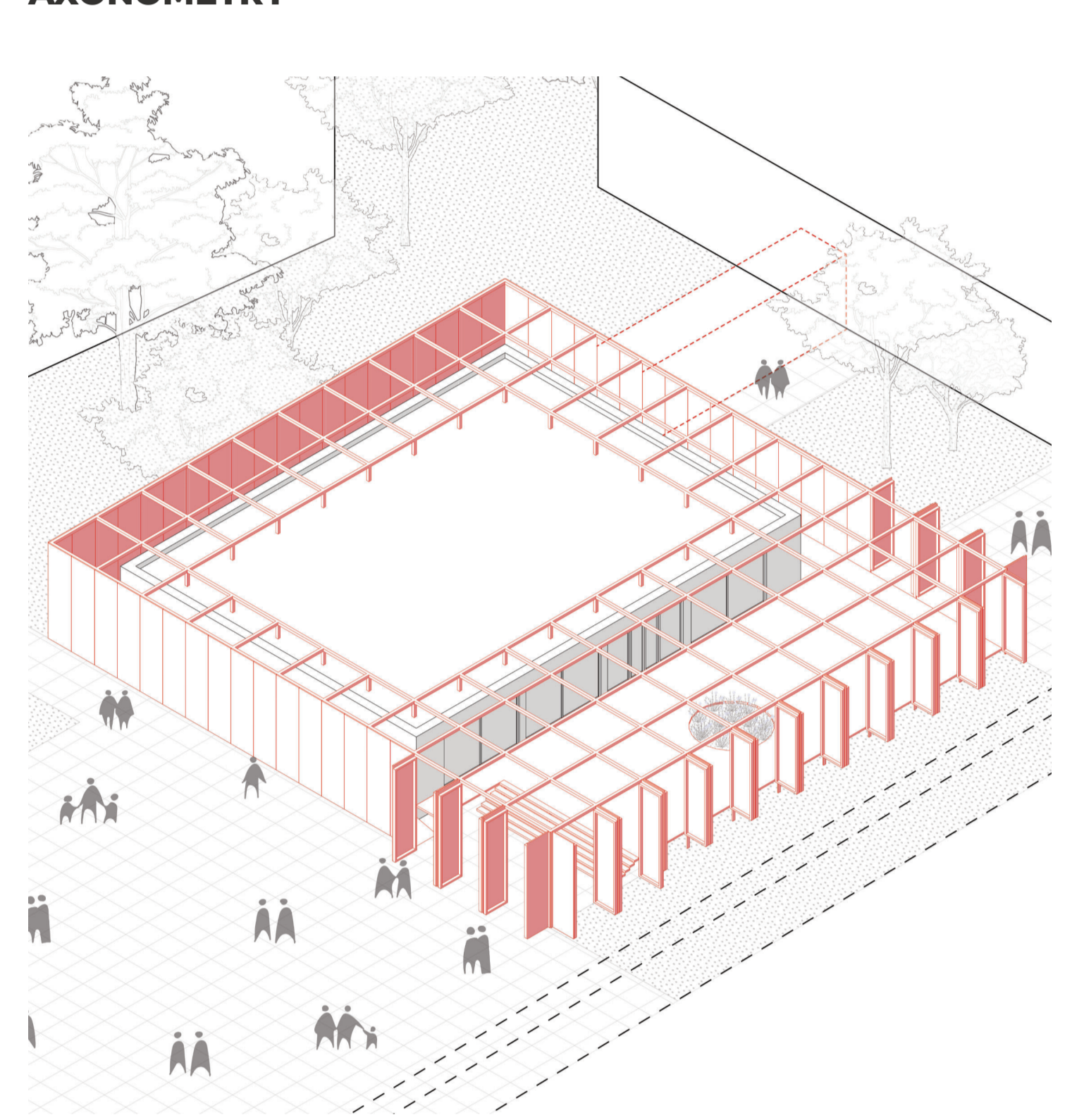
## LEGEND

1. canteen
2. visitor center
3. offices
4. accommodation
5. central square
6. education center
7. museum
8. entrance booth
9. BROKIS production
10. sports area
11. main glass production storage
- 12.

## BRIEF HISTORY OF THE CAMPUS



## AXONOMETRY



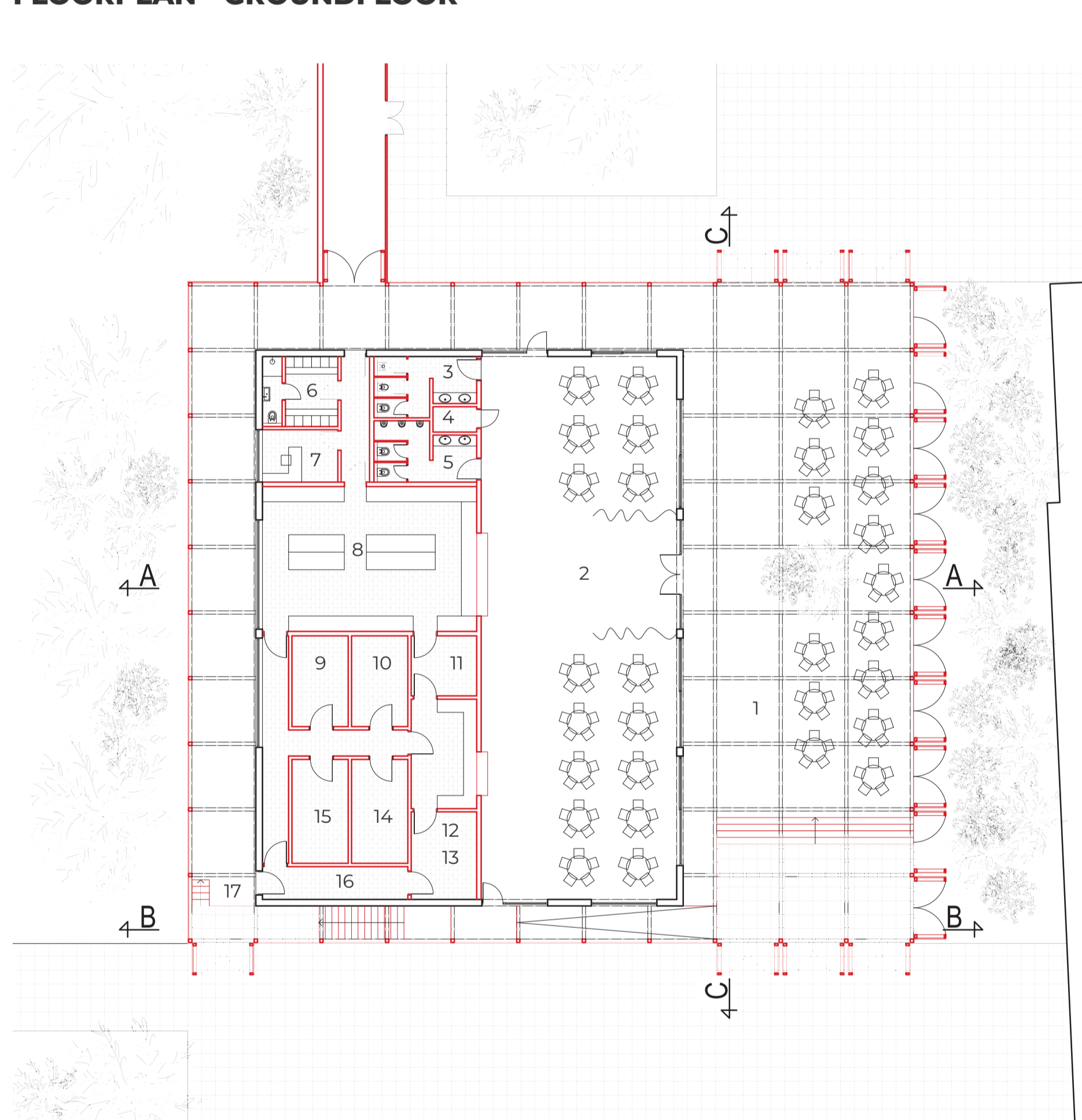
## SCHWARZPLAN



## CURRENT CONDITION



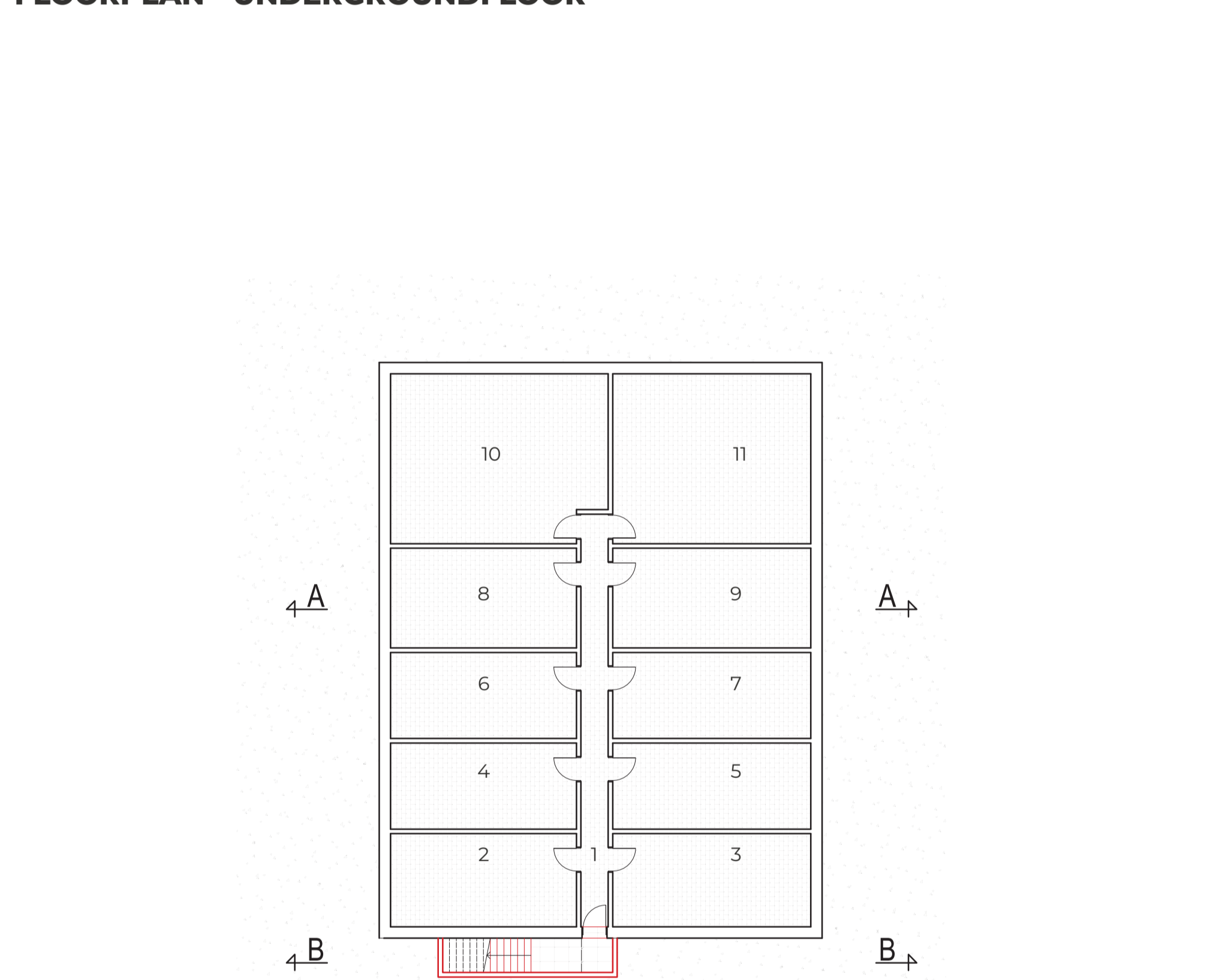
## FLOORPLAN - GROUND FLOOR



## LEGEND

- |                  |                           |                   |
|------------------|---------------------------|-------------------|
| 1. terrace       | 7. office                 | 13. waste storage |
| 2. dining area   | 8. kitchen (cooking area) | 14. storage       |
| 3. wc women      | 9. storage                | 15. storage       |
| 4. cleaning room | 10. storage               | 16. corridor      |
| 5. wc men        | 11. dish storage          | 17. supply ramp   |
| 6. changing room | 12. dishwashing           |                   |

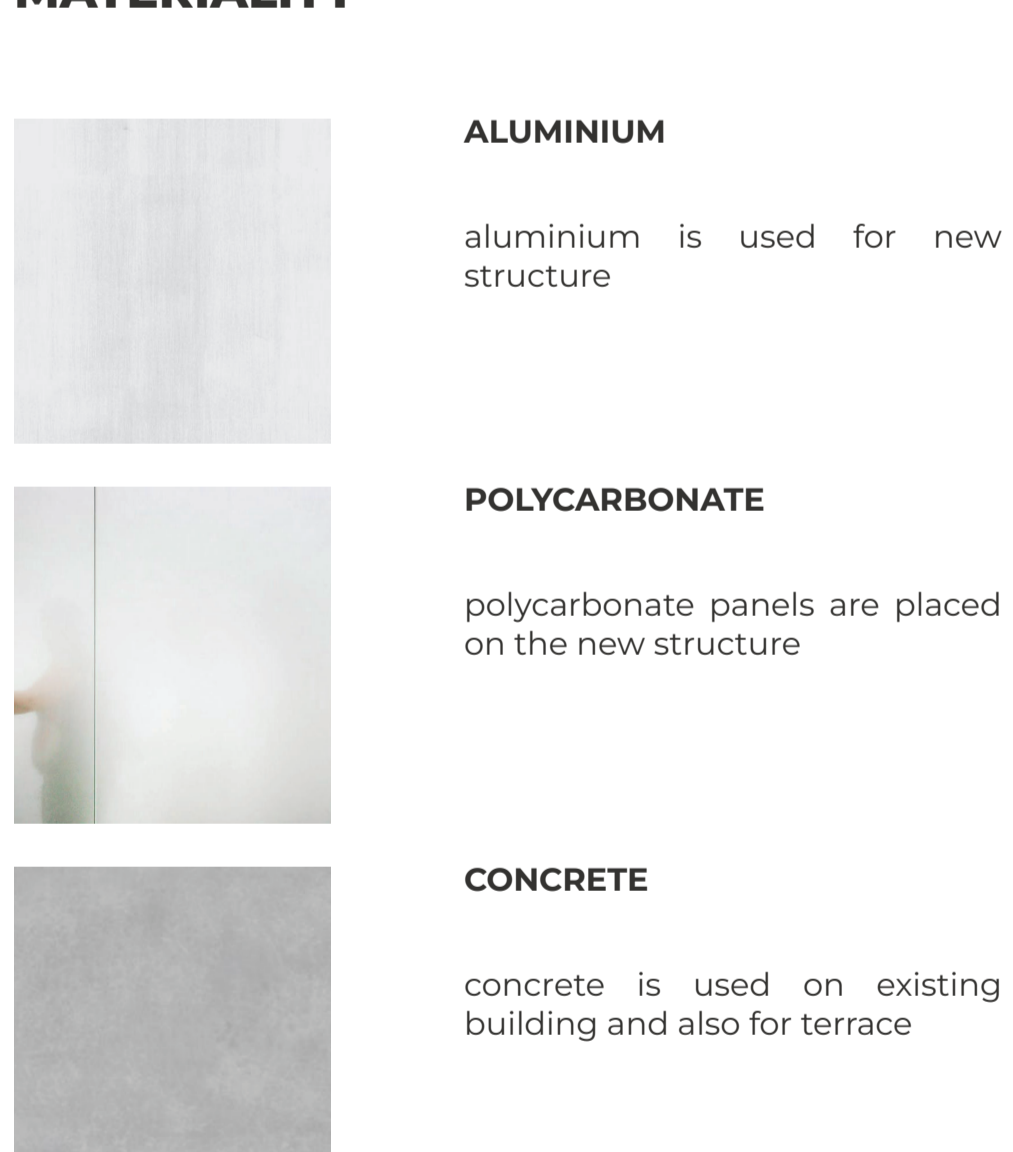
## FLOORPLAN - UNDERGROUND FLOOR



## LEGEND

- |                 |                             |
|-----------------|-----------------------------|
| 1. corridor     | 7. storage                  |
| 2. dish storage | 8. storage                  |
| 3. storage      | 9. furniture storage        |
| 4. storage      | 10. technical room          |
| 5. storage      | 11. outdoor seating storage |
| 6. storage      |                             |

## MATERIALITY



### ALUMINIUM

aluminium is used for new structure

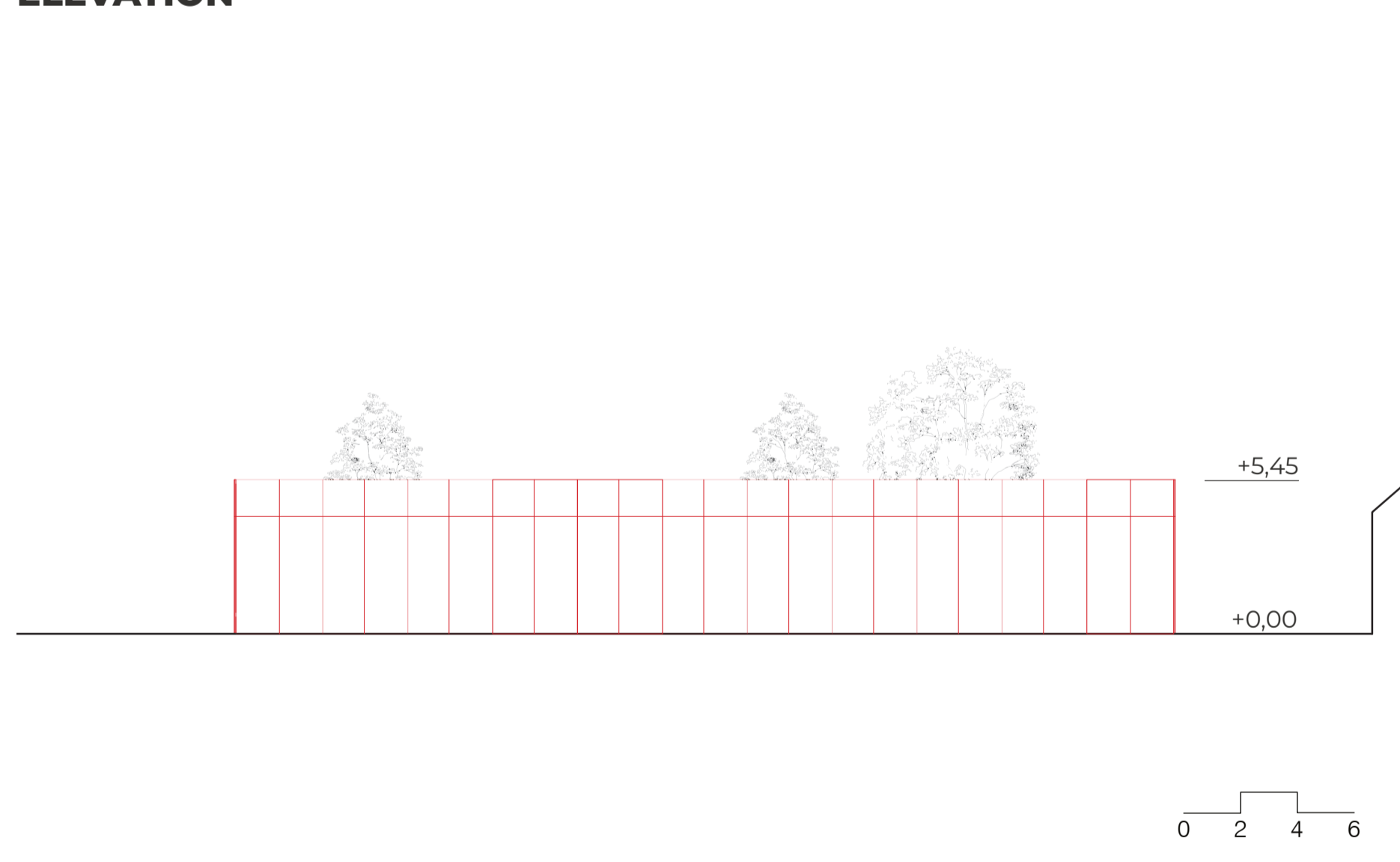
### POLYCARBONATE

polycarbonate panels are placed on the new structure

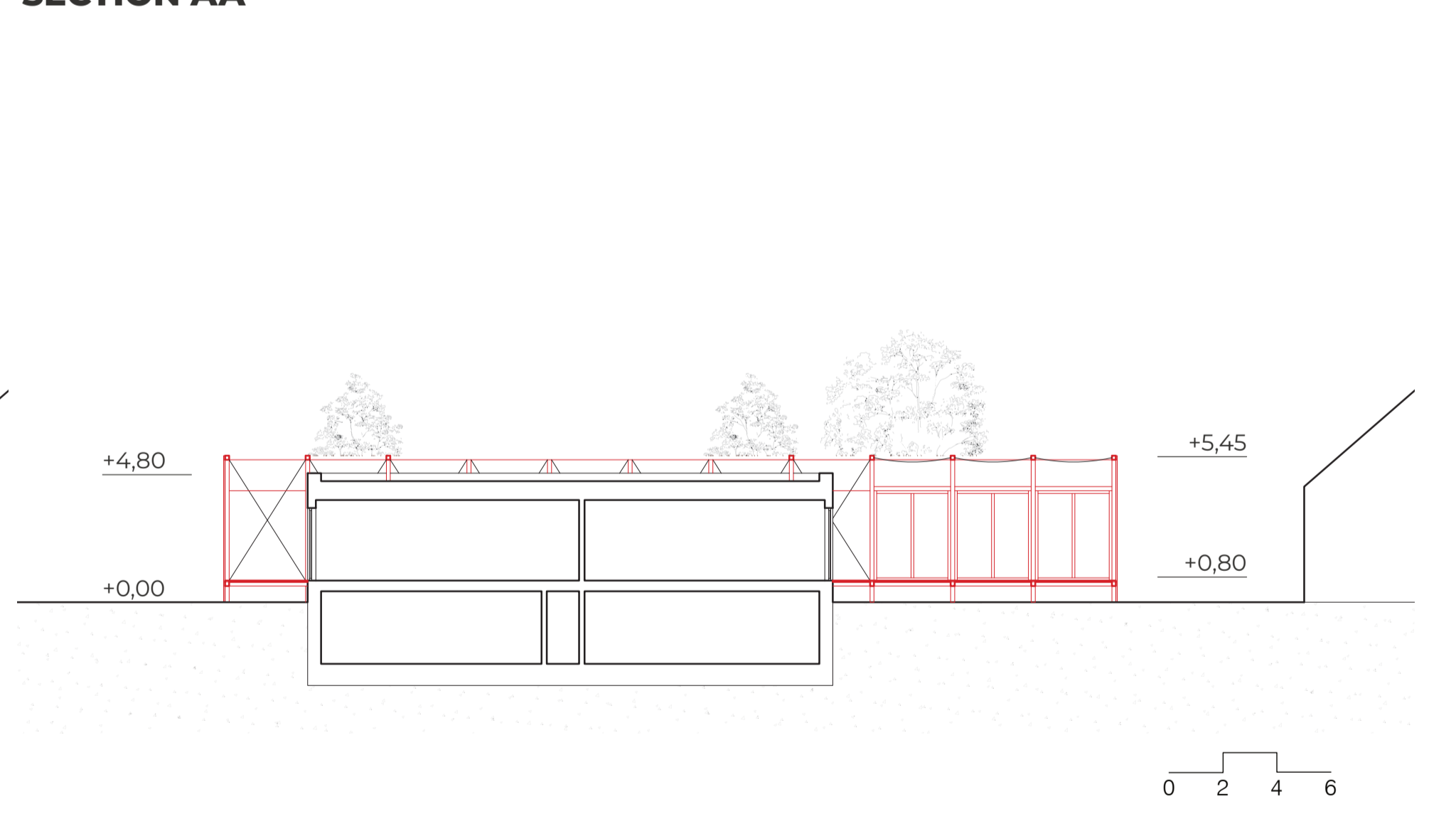
### CONCRETE

concrete is used on existing building and also for terrace

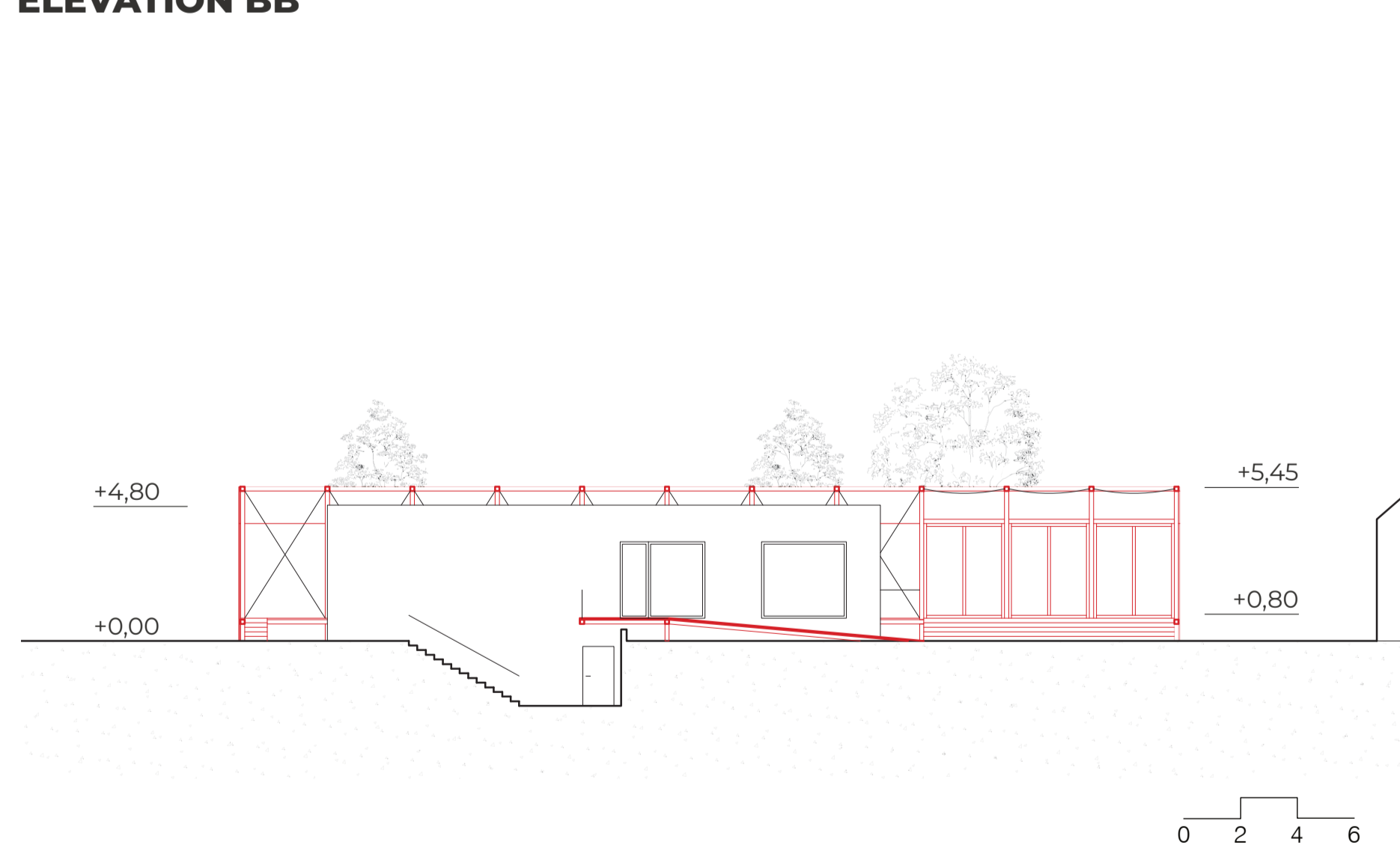
## ELEVATION



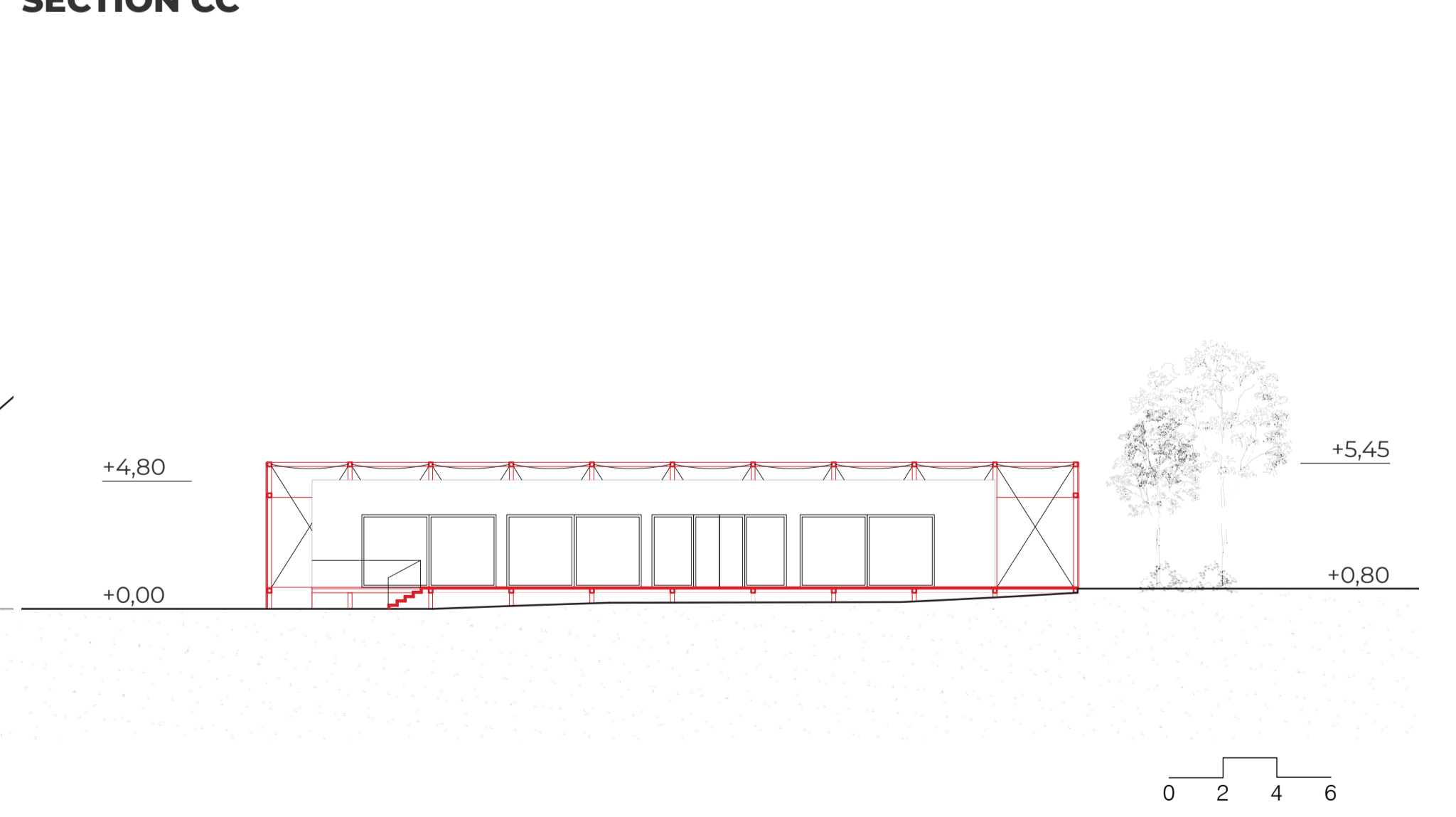
## SECTION AA



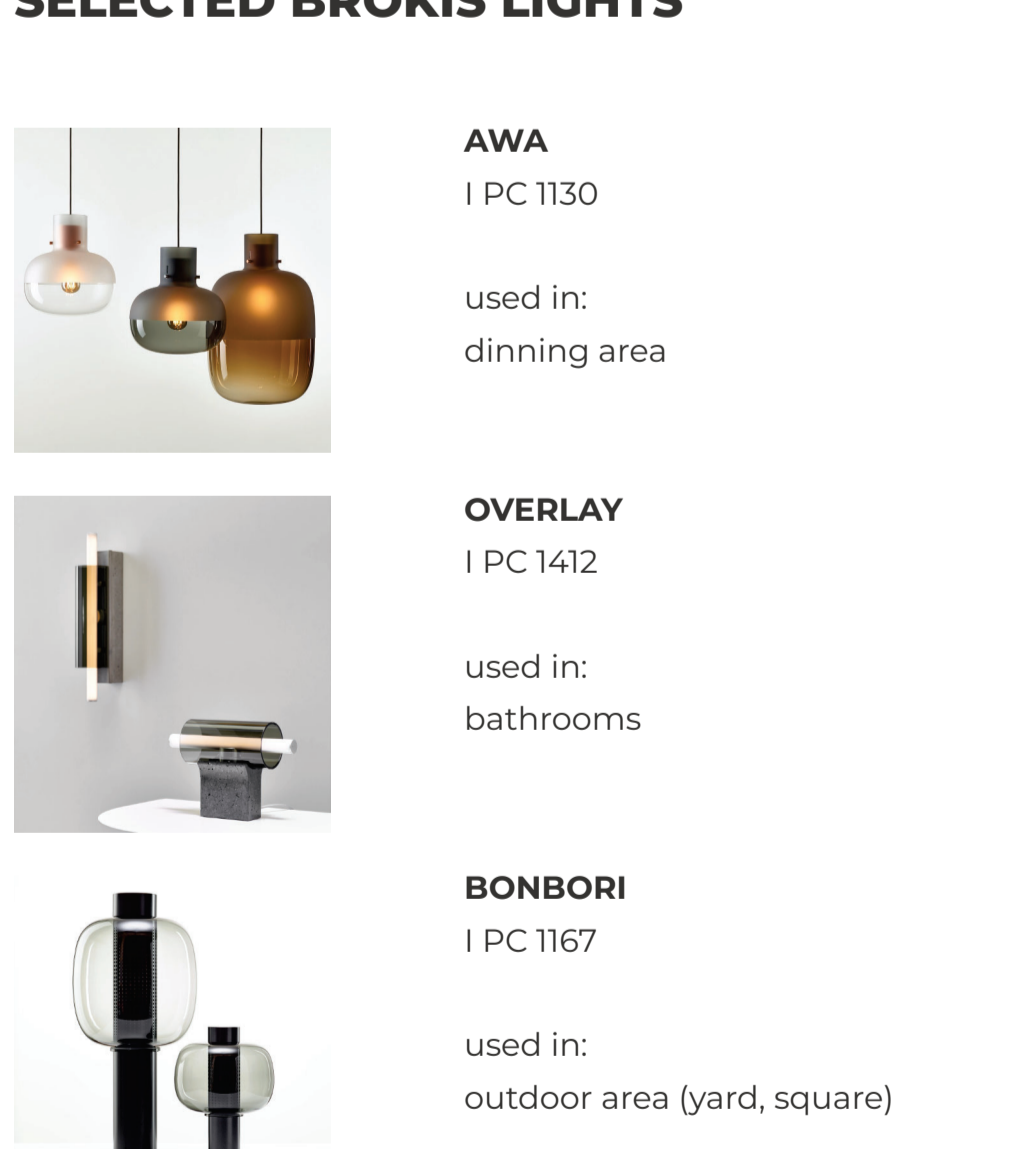
## ELEVATION BB



## SECTION CC



## SELECTED BROKIS LIGHTS



### AWA

PC 1130

used in: dining area

### OVERLAY

PC 1412

used in: bathrooms

### BONBORI

PC 1167

used in: outdoor area (yard, square)

