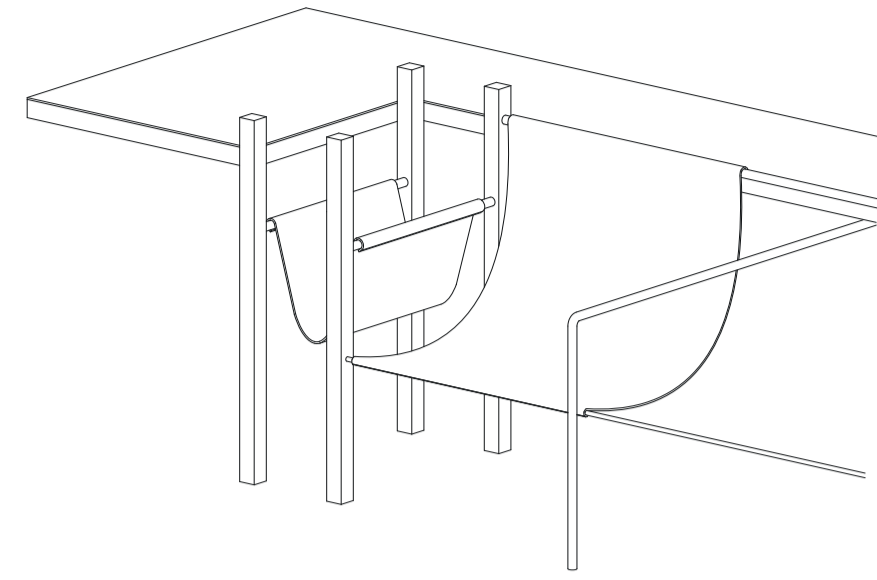
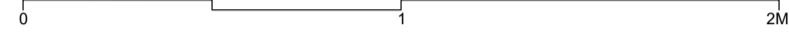
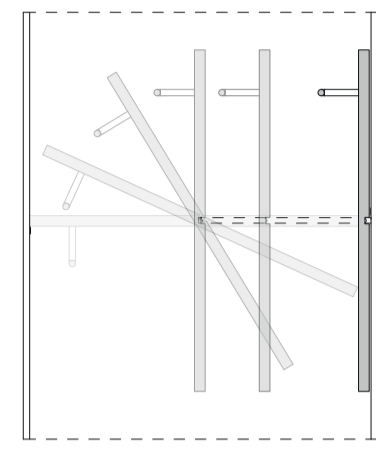


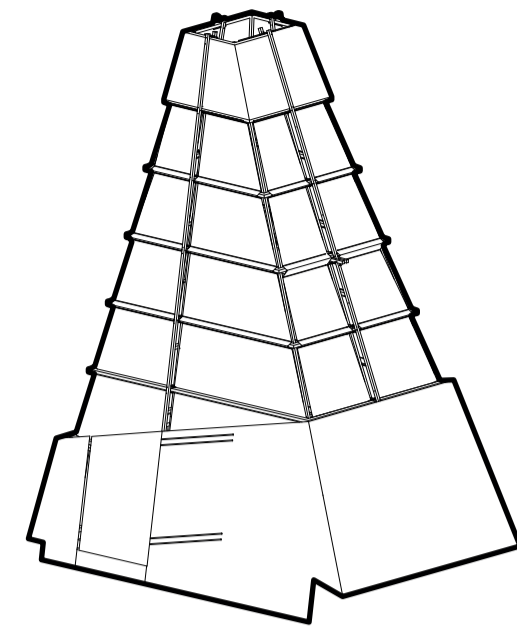
Staircase-Mezzanine  
Elements



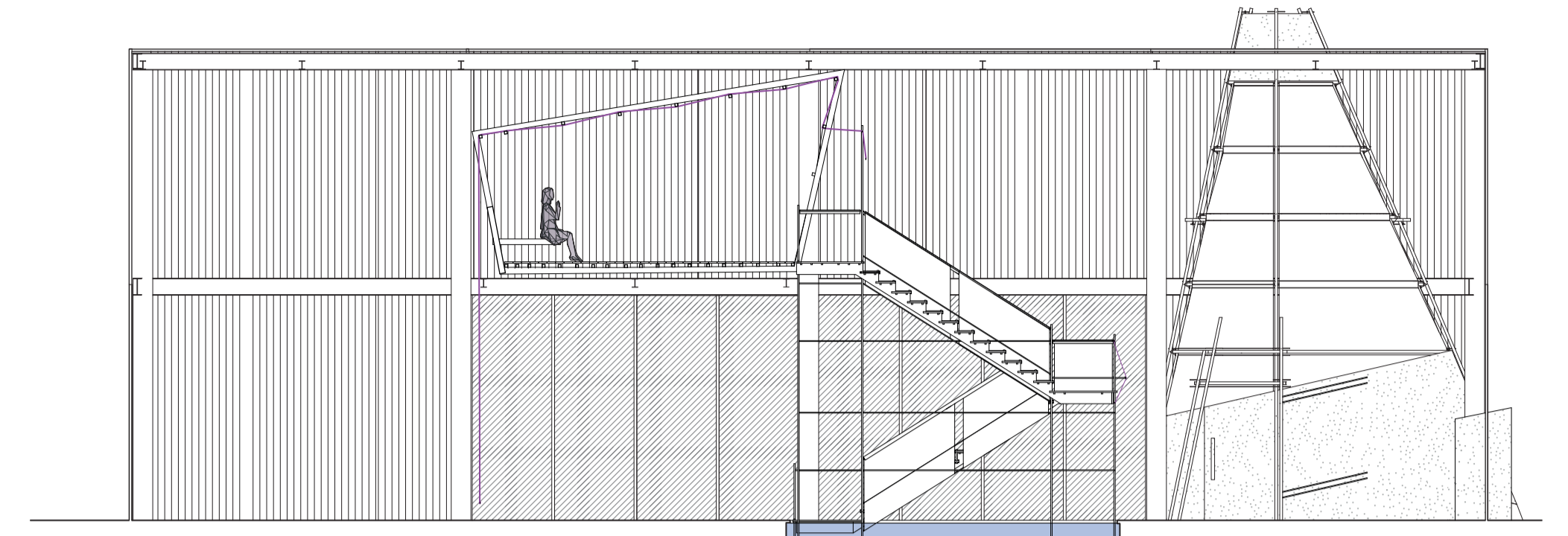
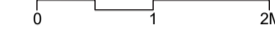
Reception Zone



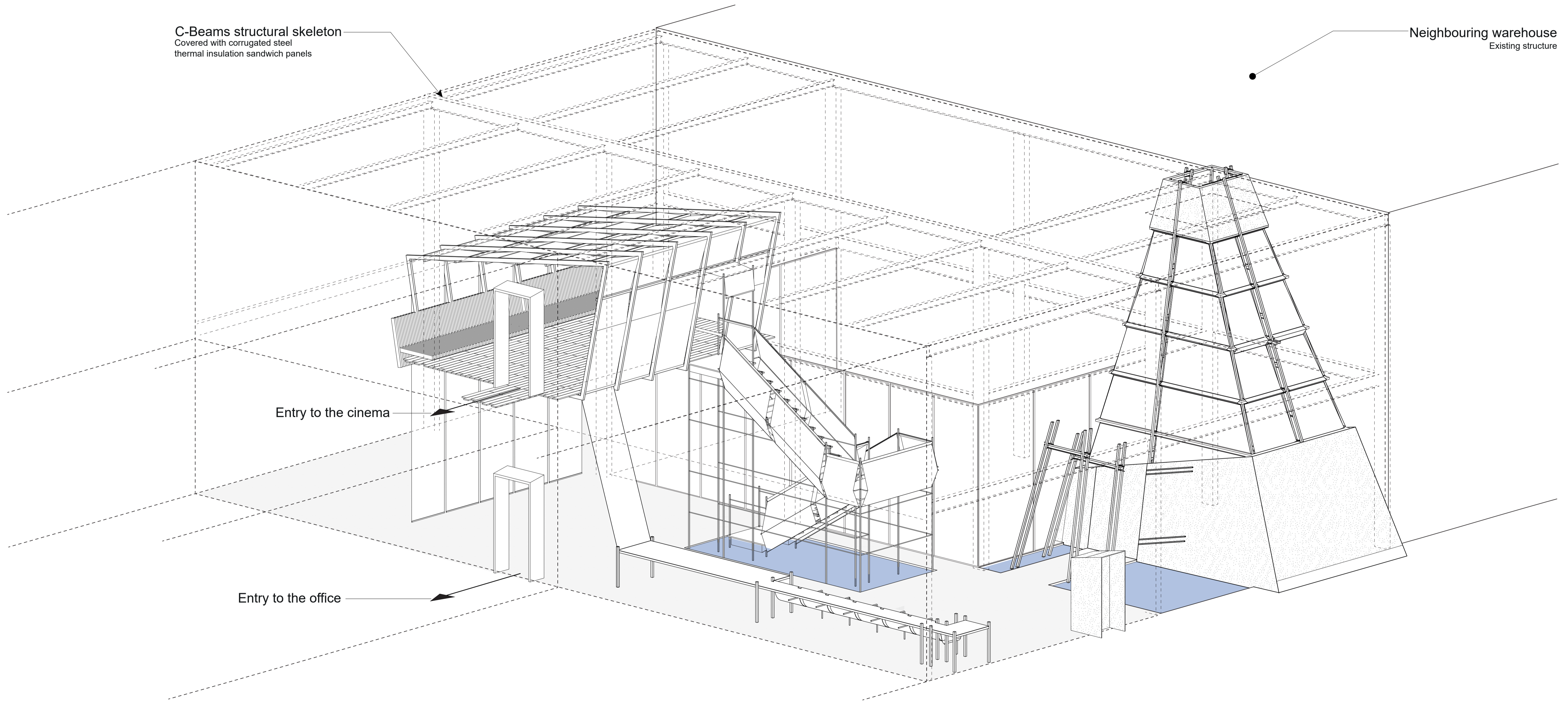
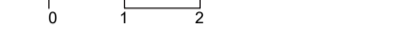
Entrance



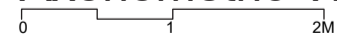
Conference Room



Section A-A



Axonometric View

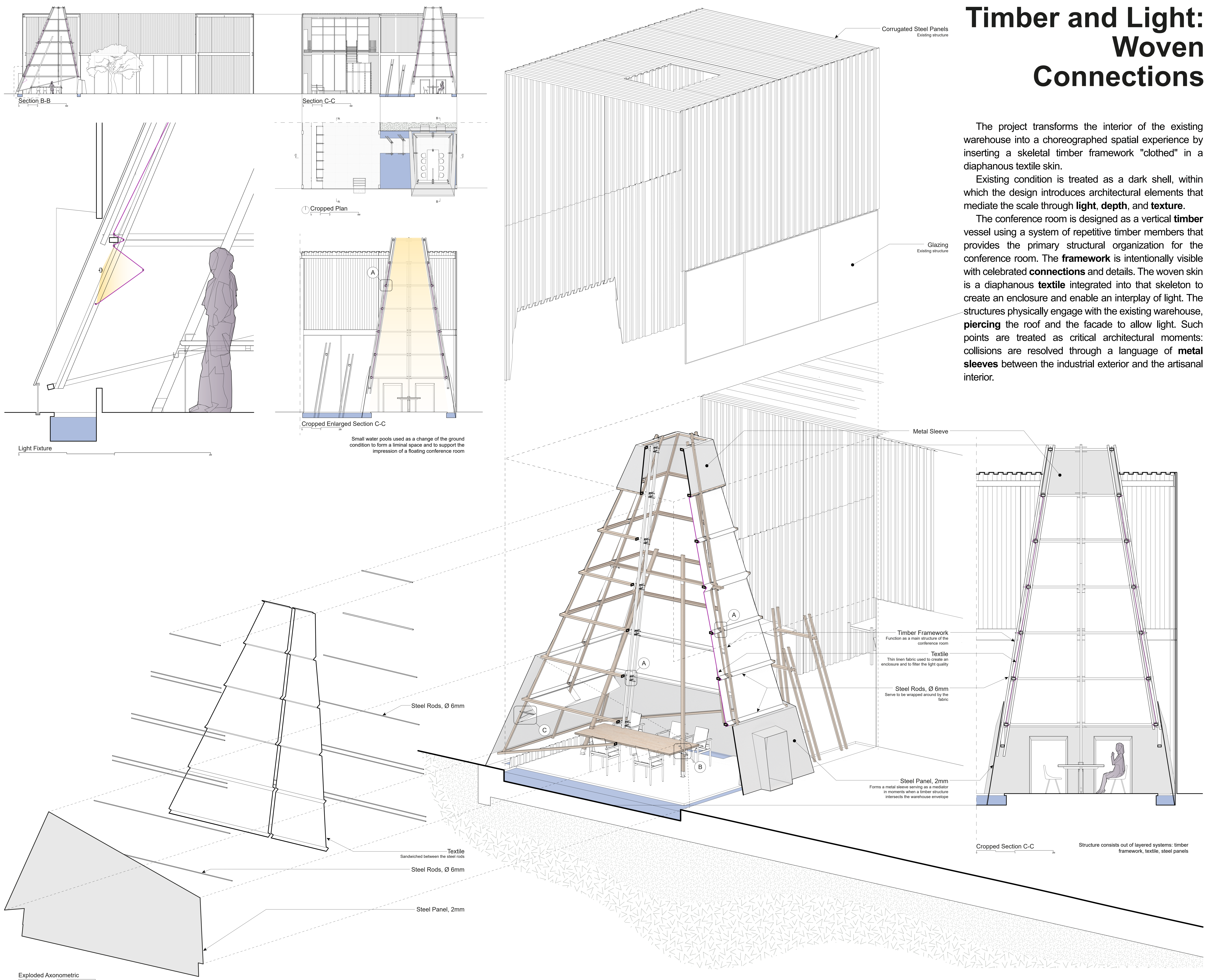


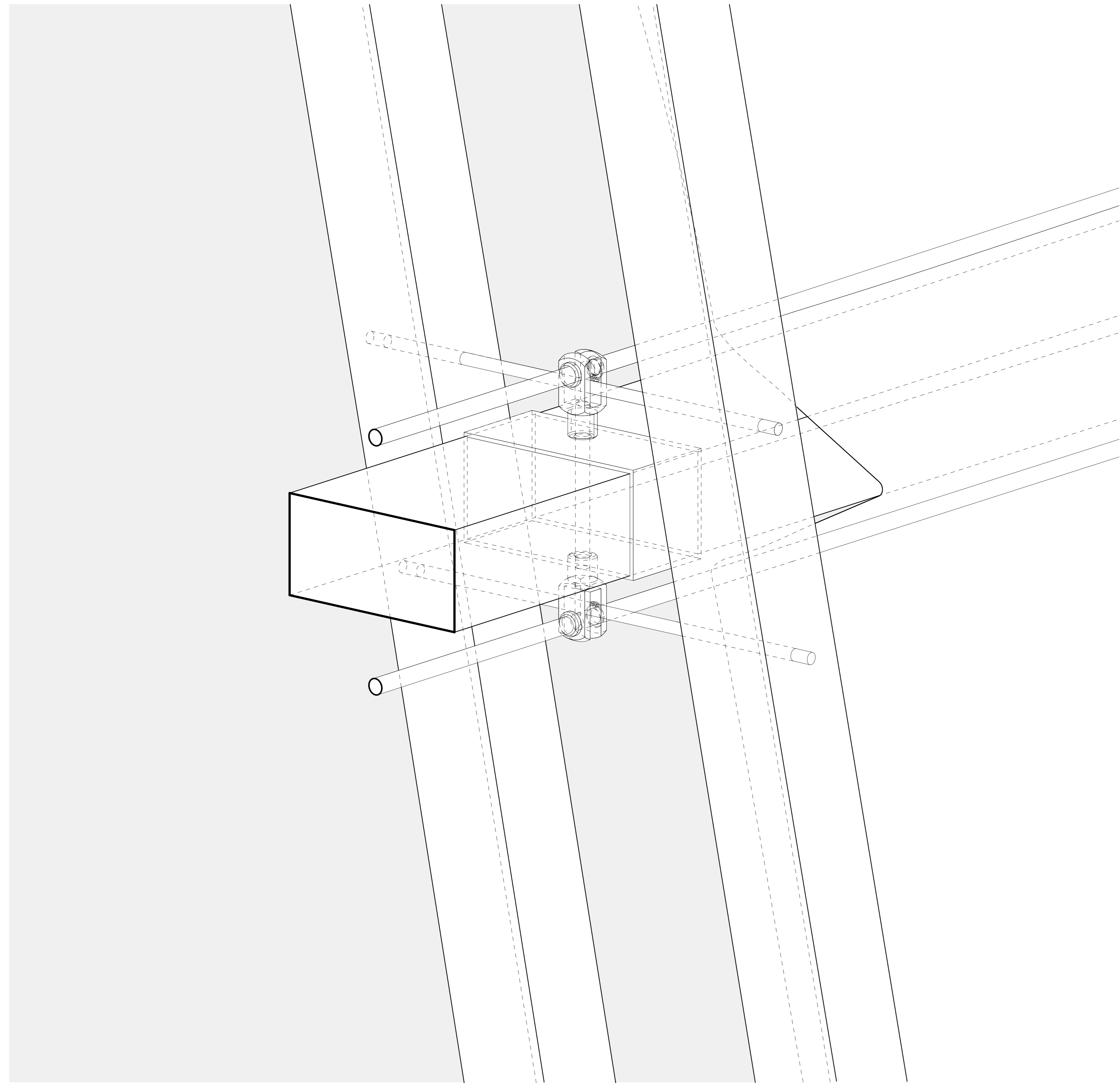
# Timber and Light: Woven Connections

The project transforms the interior of the existing warehouse into a choreographed spatial experience by inserting a skeletal timber framework "clothed" in a diaphanous textile skin.

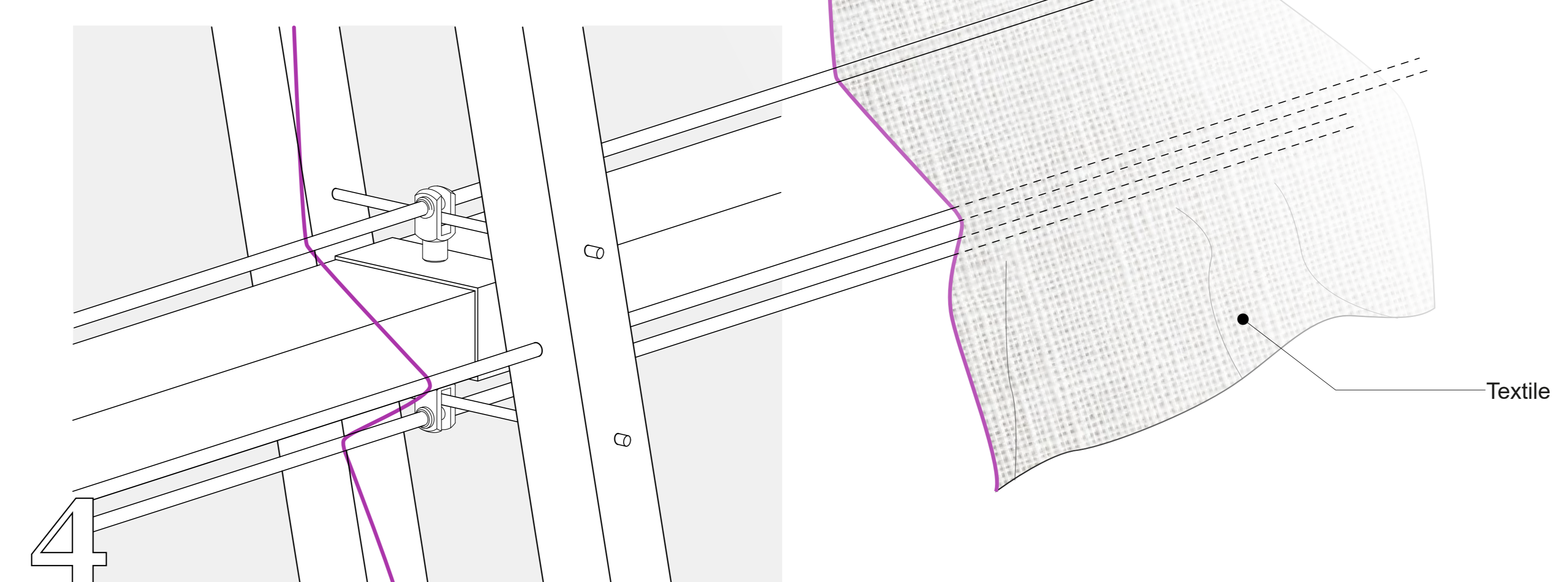
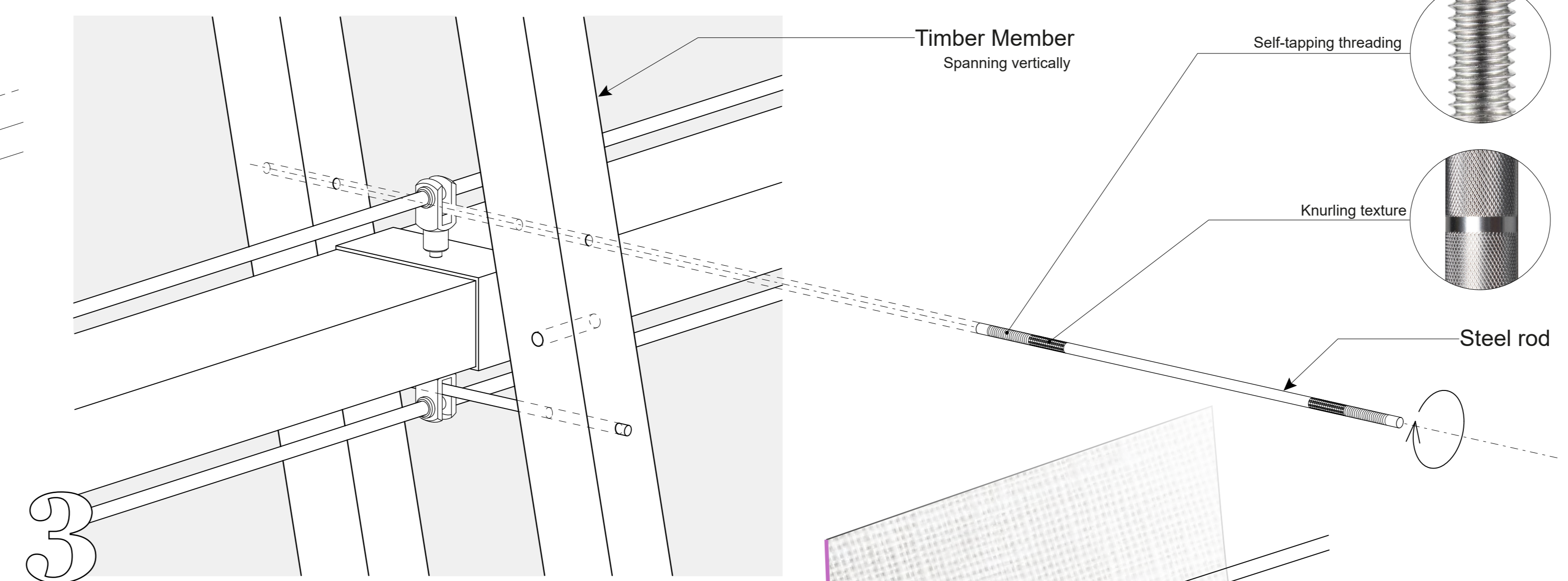
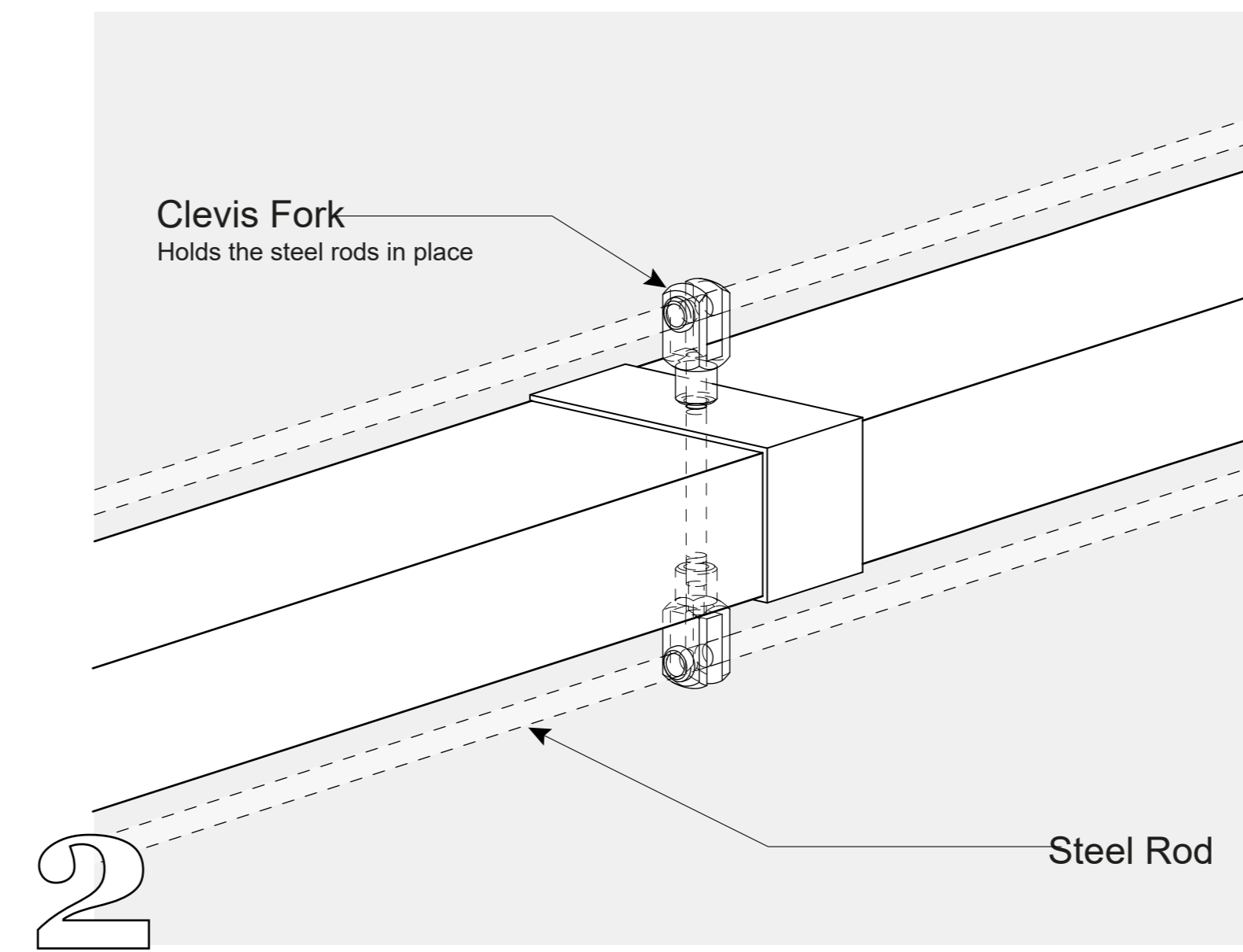
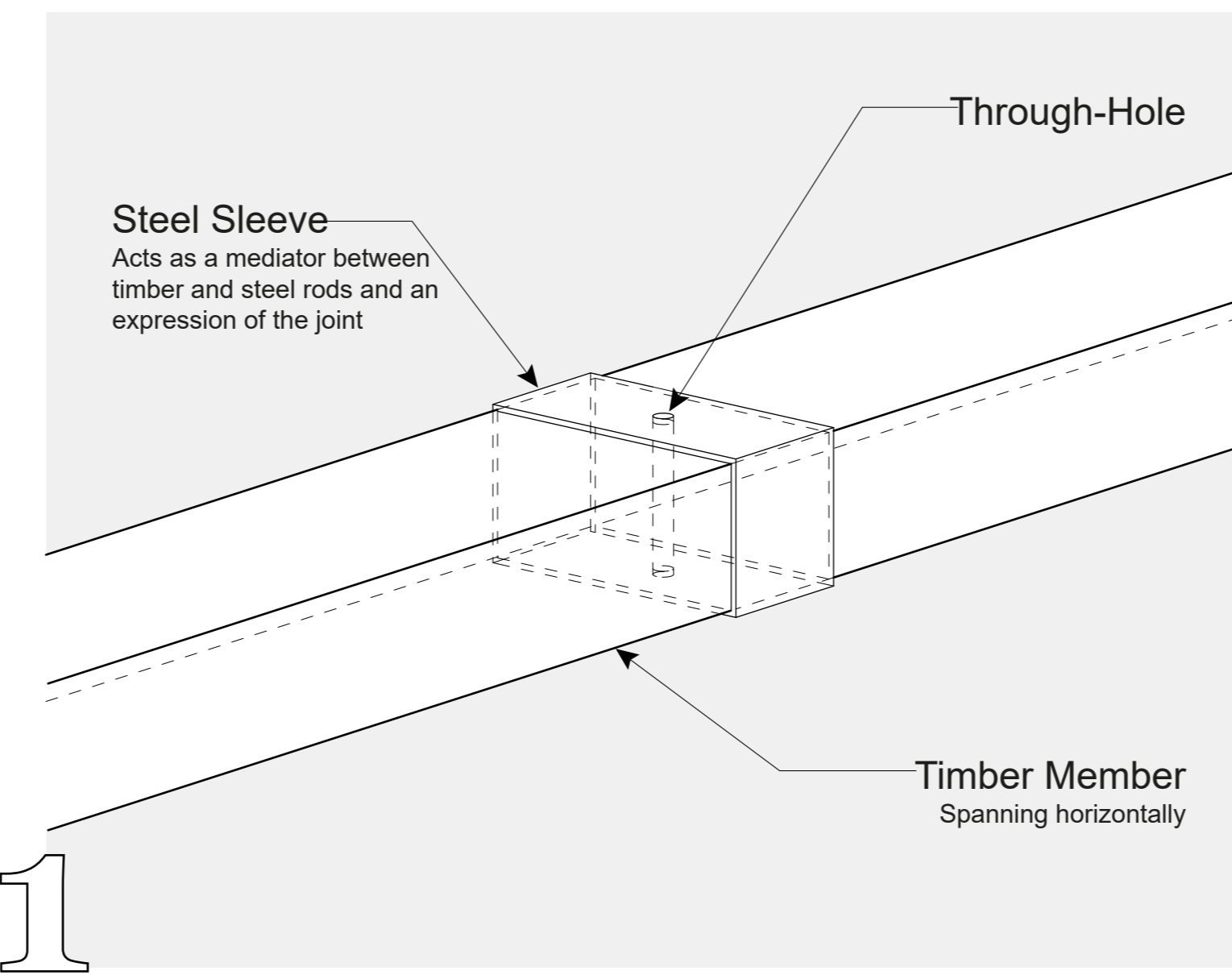
Existing condition is treated as a dark shell, within which the design introduces architectural elements that mediate the scale through **light, depth, and texture**.

The conference room is designed as a vertical **timber** vessel using a system of repetitive timber members that provides the primary structural organization for the conference room. The **framework** is intentionally visible with celebrated **connections** and details. The woven skin is a diaphanous **textile** integrated into that skeleton to create an enclosure and enable an interplay of light. The structures physically engage with the existing warehouse, **piercing** the roof and the facade to allow light. Such points are treated as critical architectural moments: collisions are resolved through a language of **metal sleeves** between the industrial exterior and the artisanal interior.

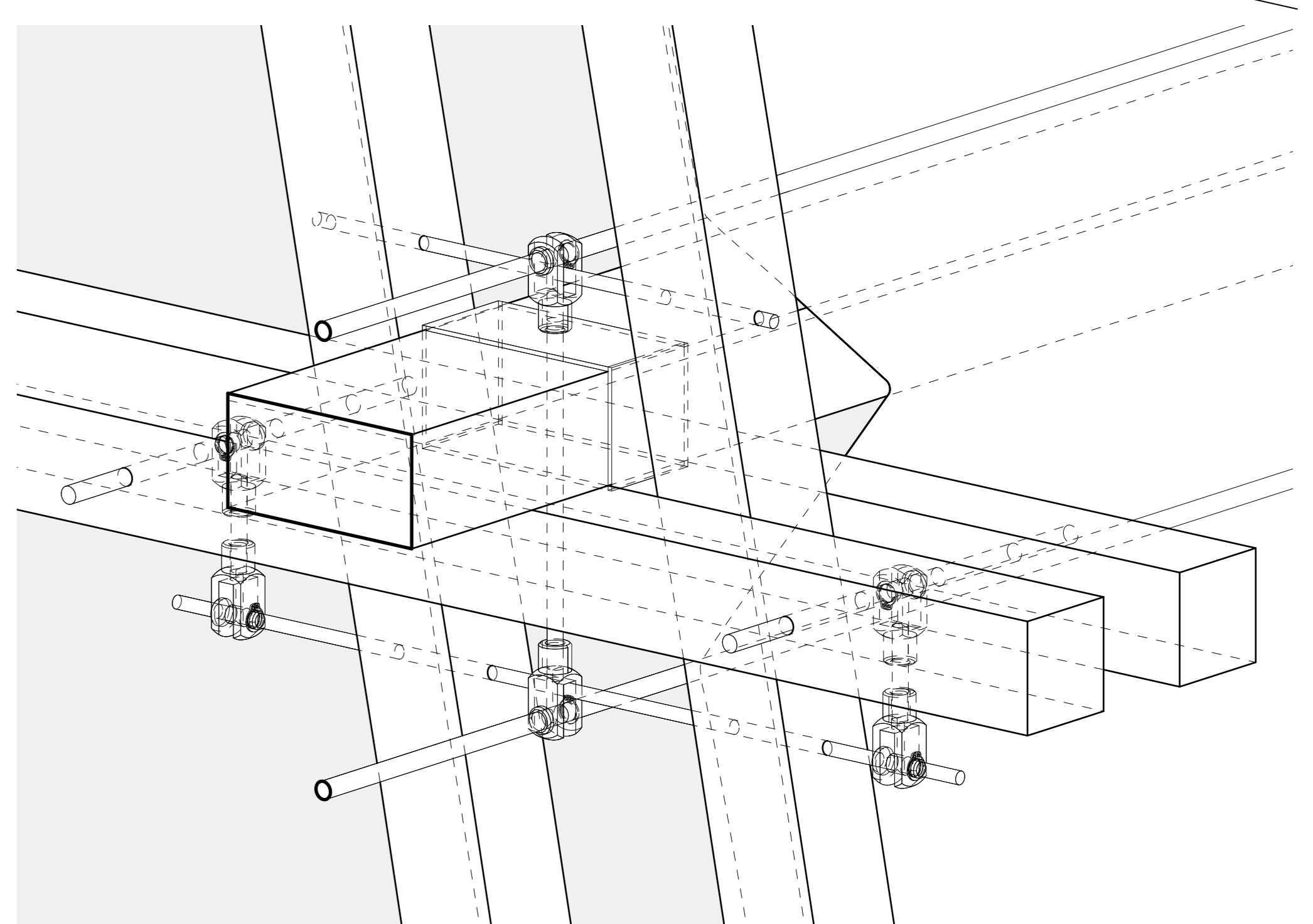
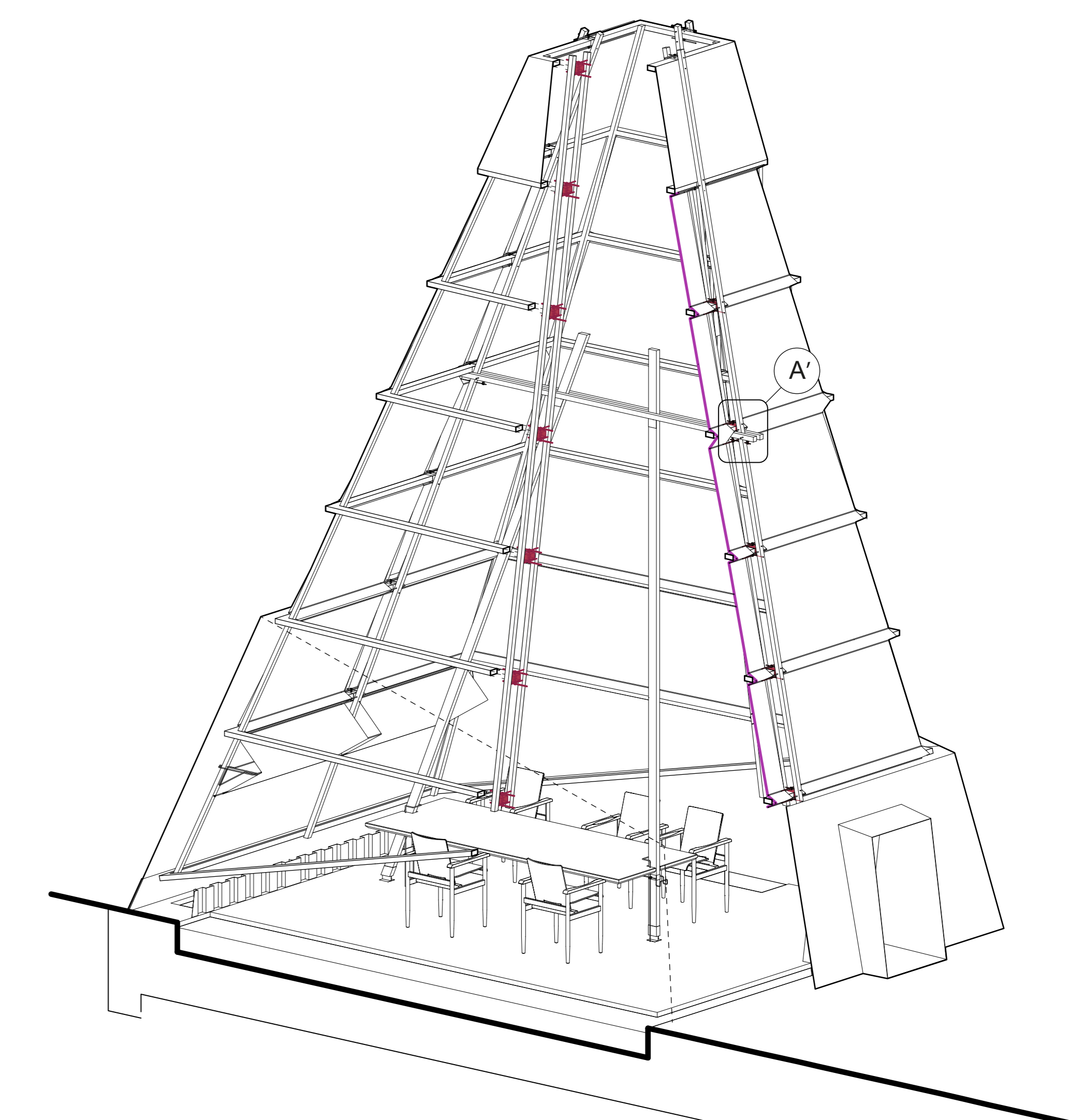




Detail A  
0 1 2 5CM

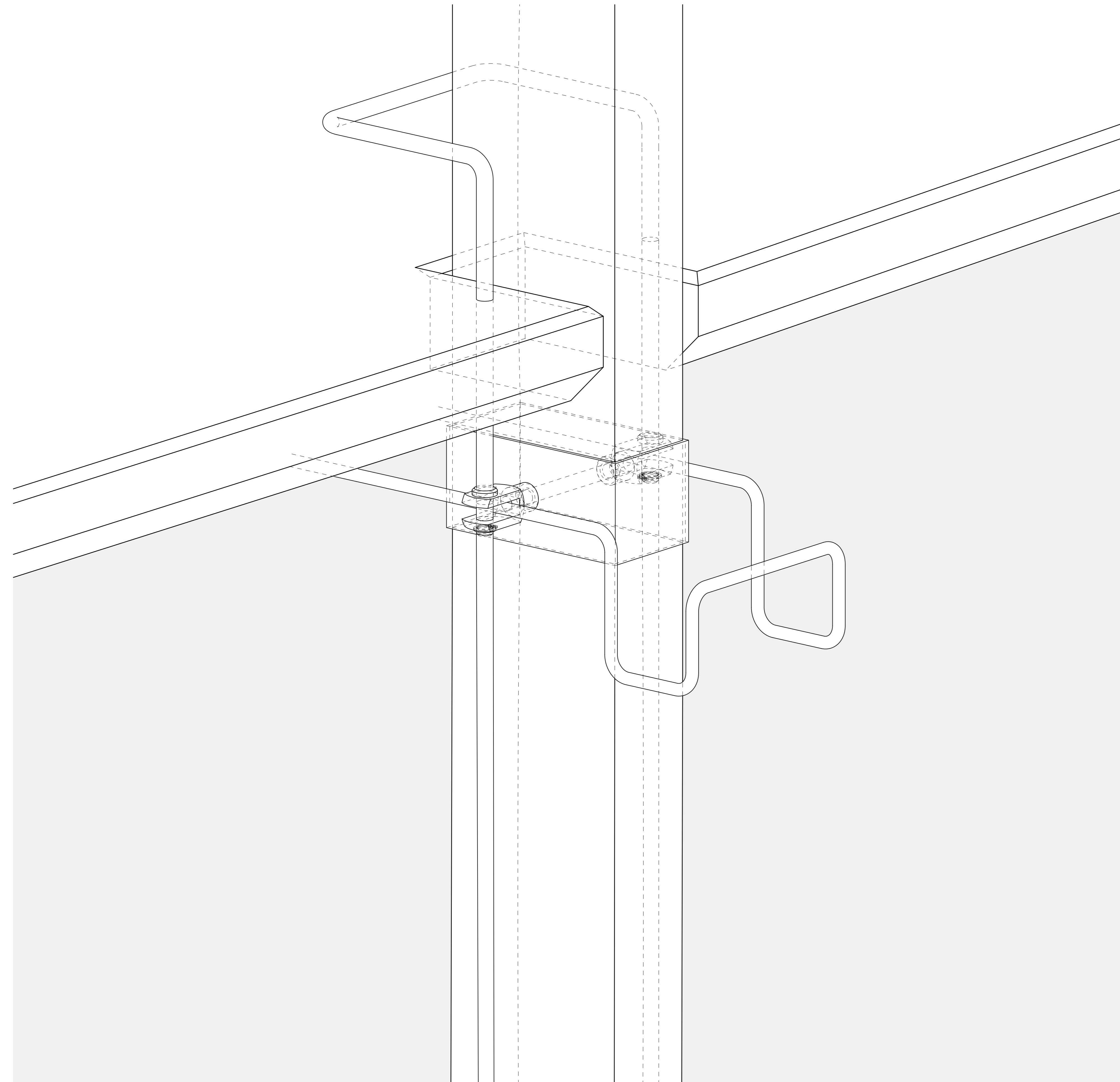


Assembly Diagram  
0 1 2 5 10CM



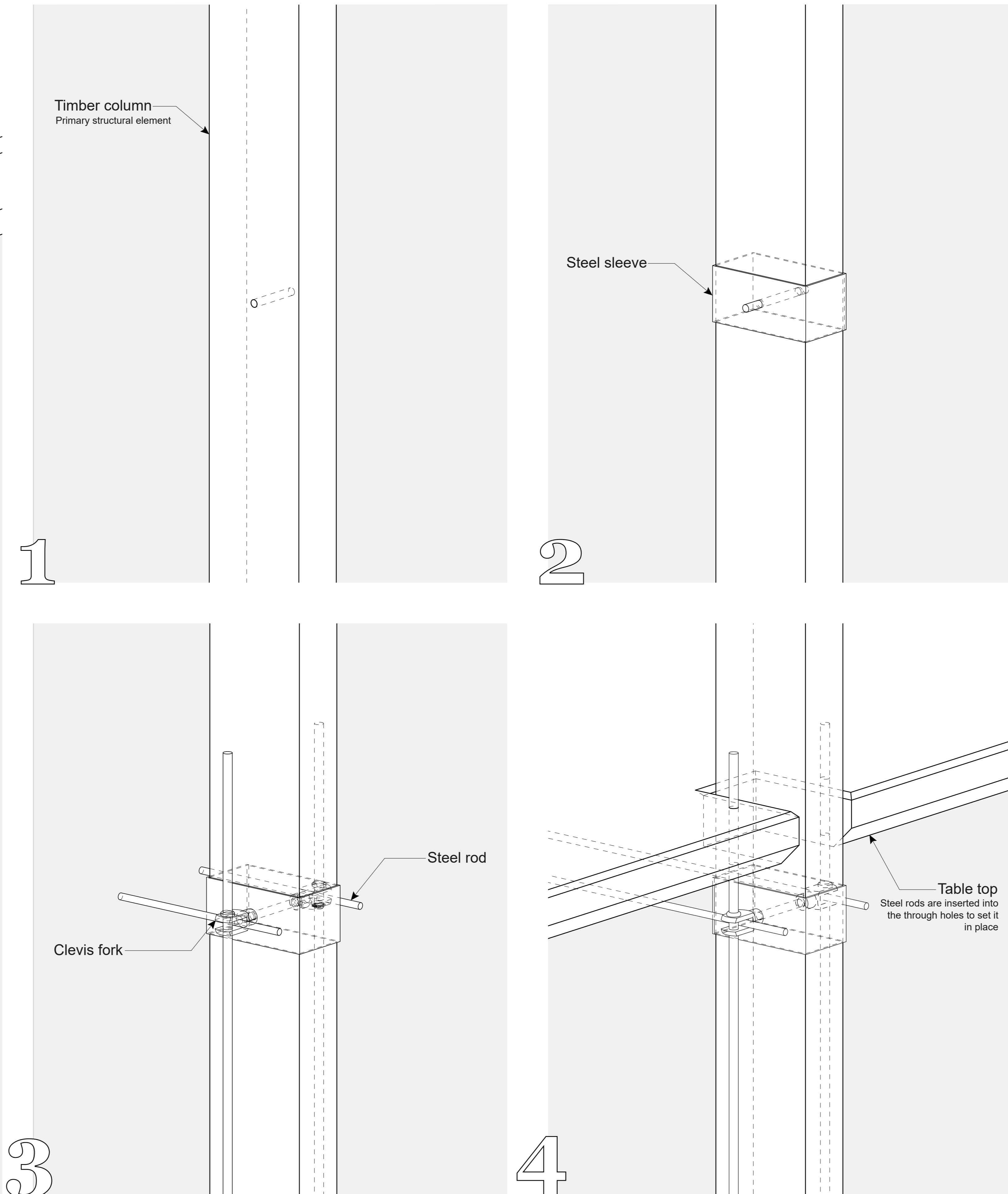
Detail A'  
0 1 2 5 10CM

Variation of the Detail A. Appears as a connection to a secondary structure component in a timber framework

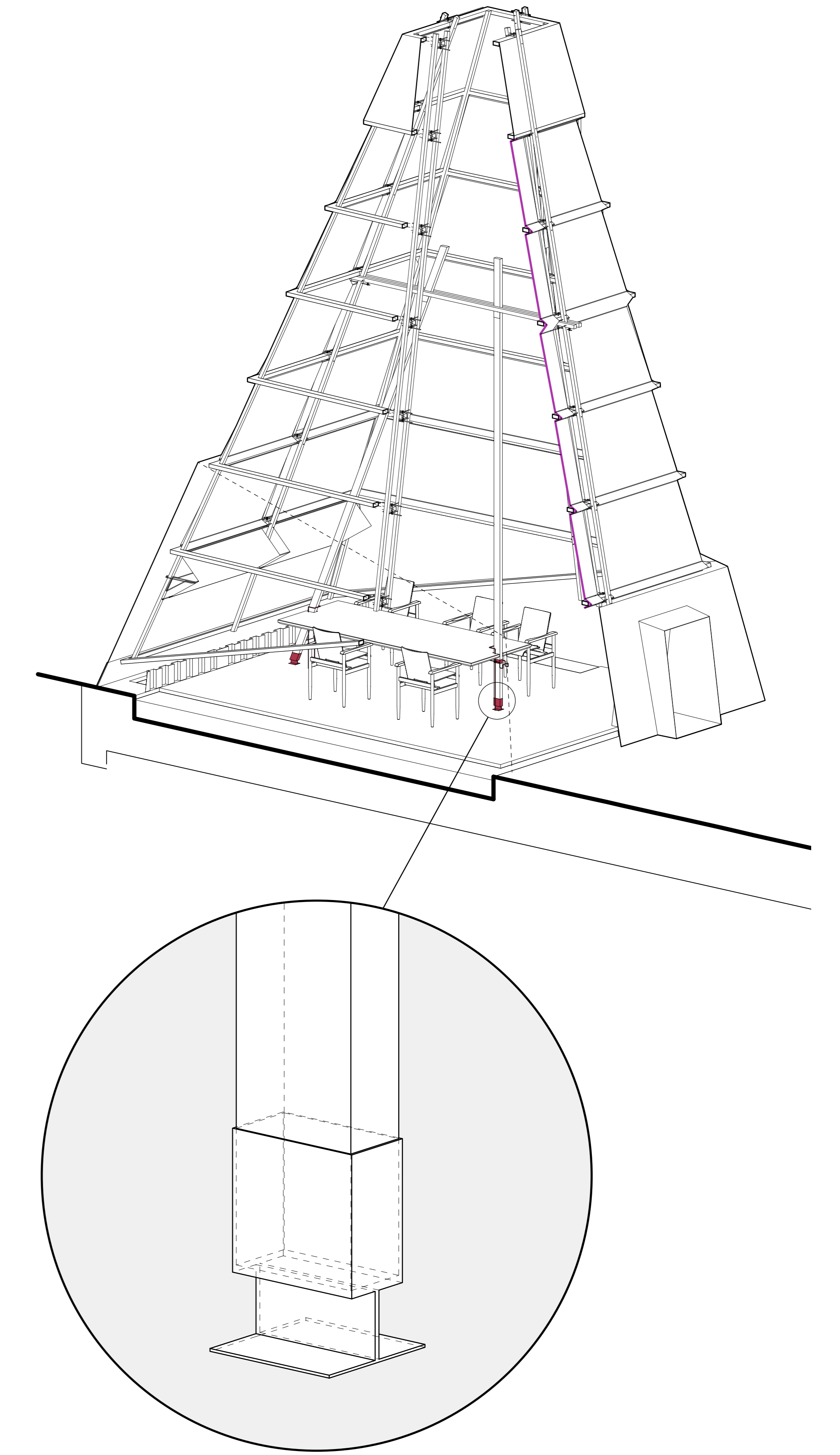


Detail B  
0 1 2 5CM

Table Top Connection Joint

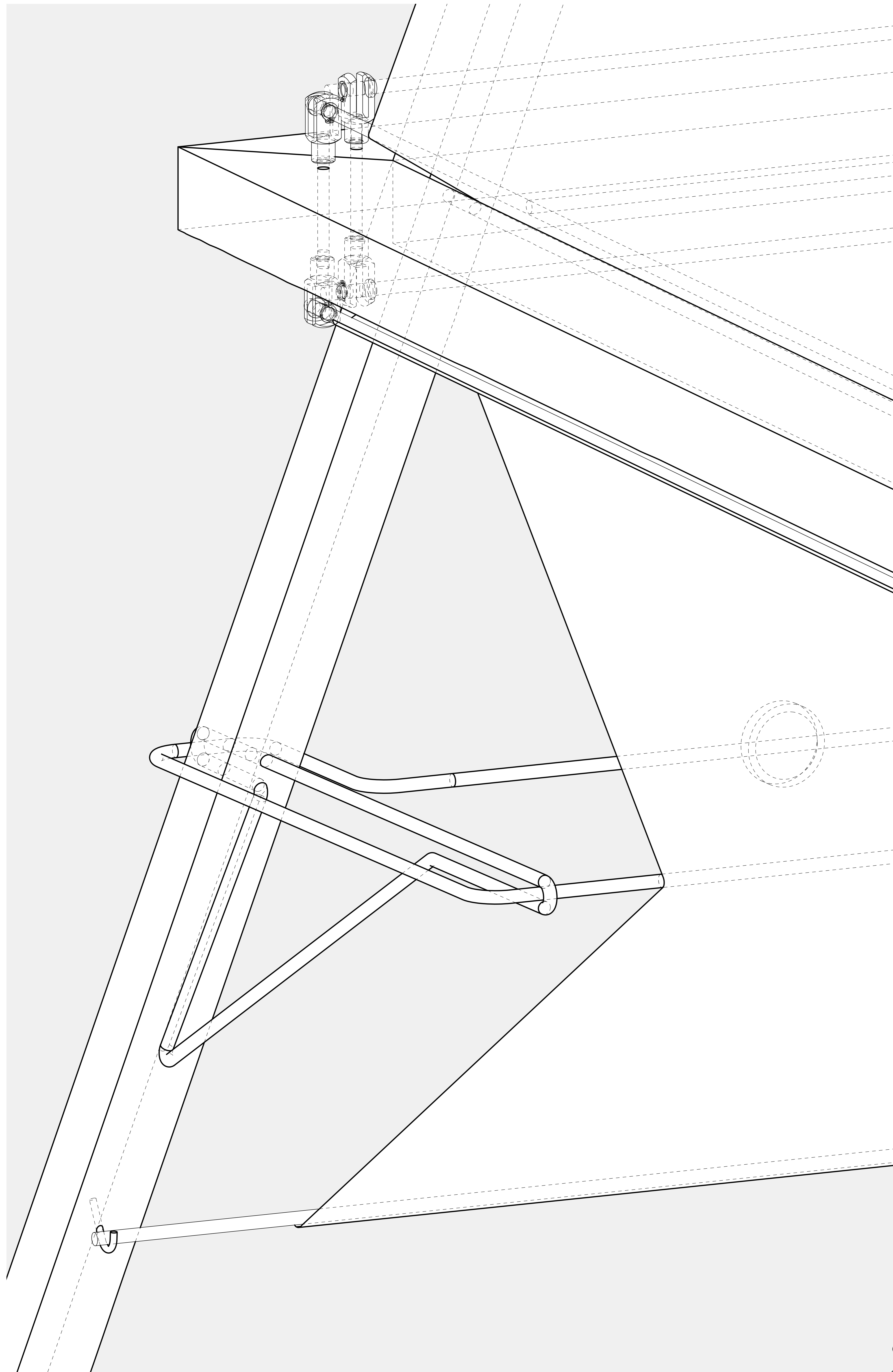


Assembly Diagram  
0 1 2 5 10CM

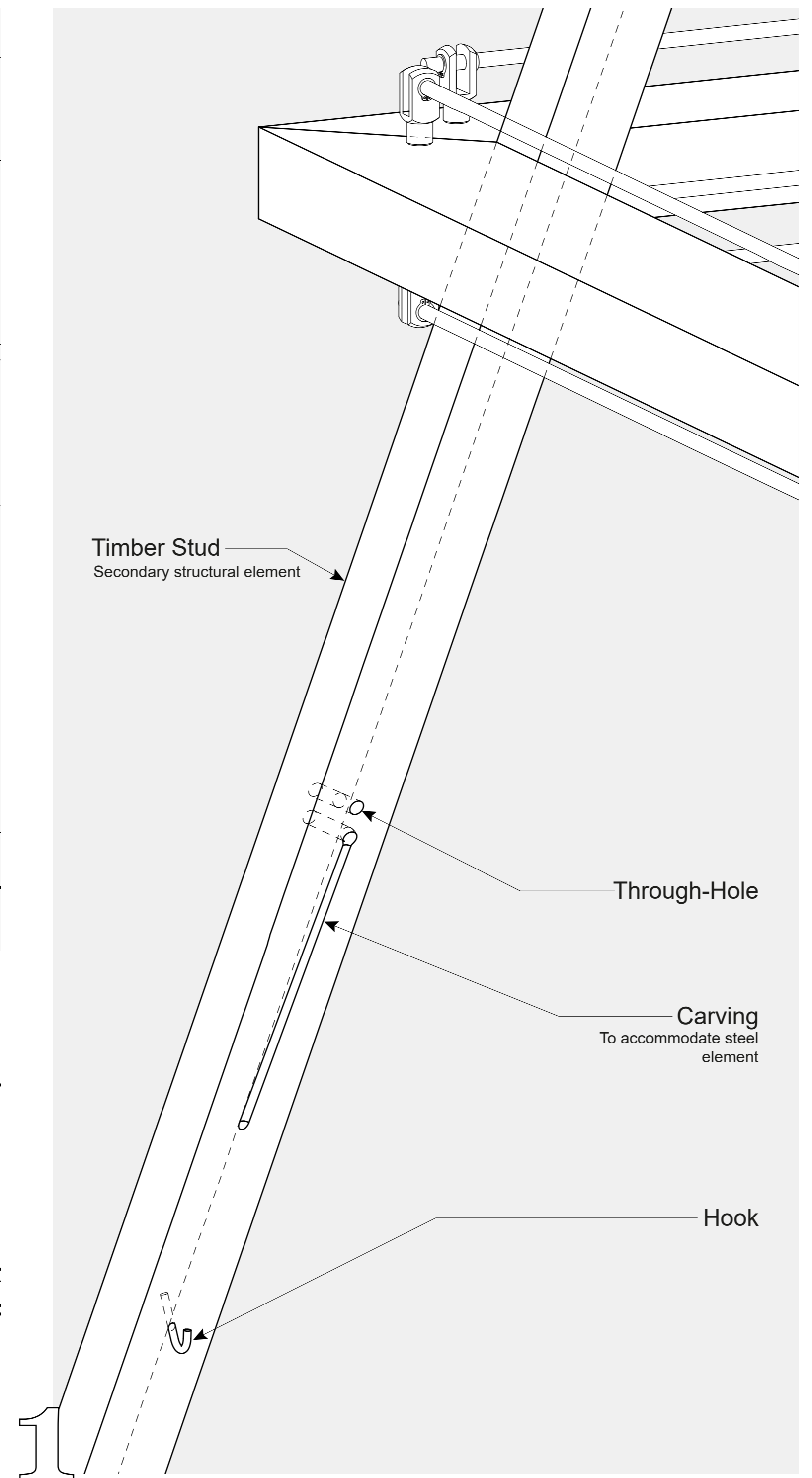


Column Base Detail  
0 1 2 5 10CM

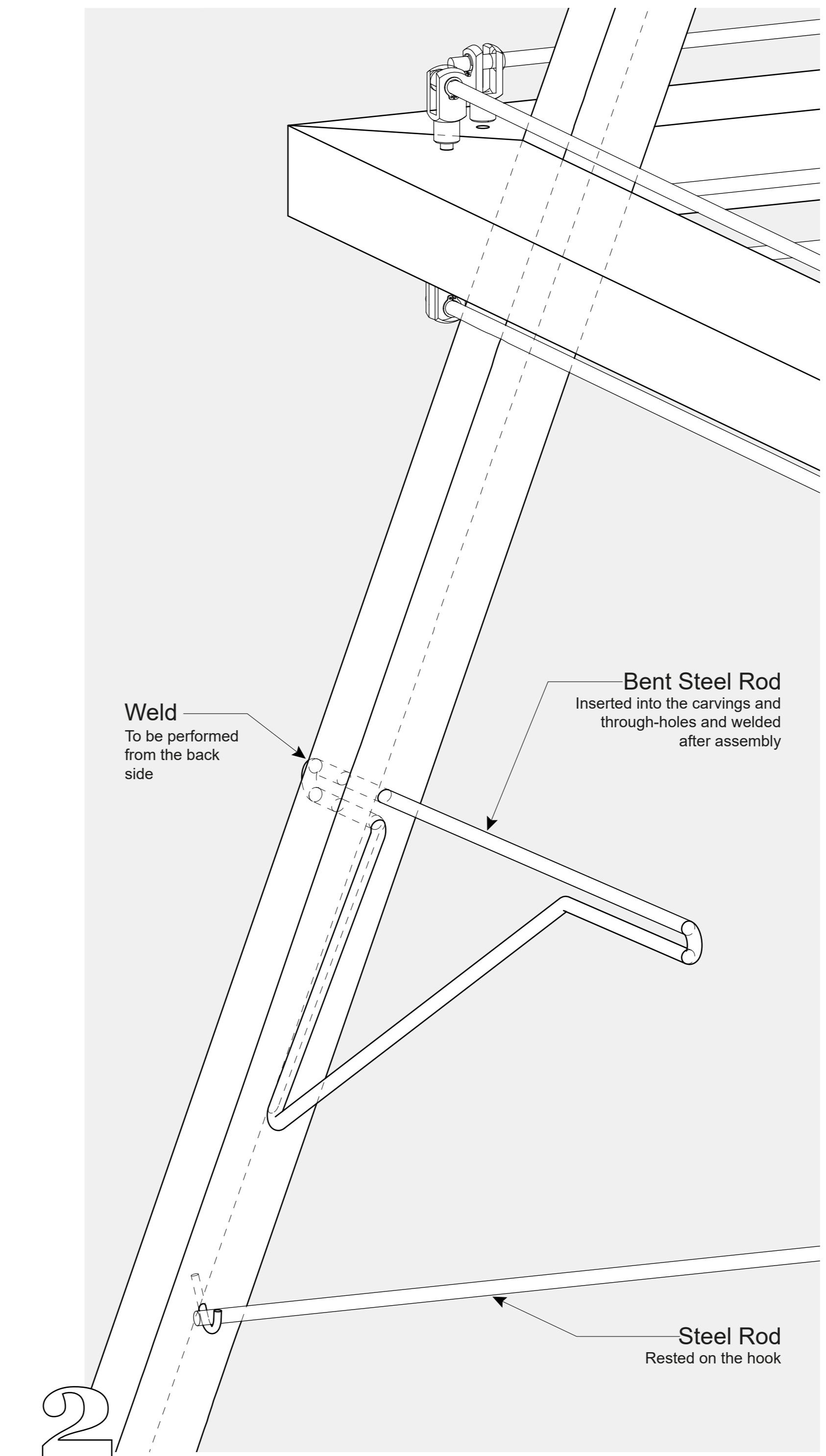
Acts as a mediator between timber columns and concrete flooring



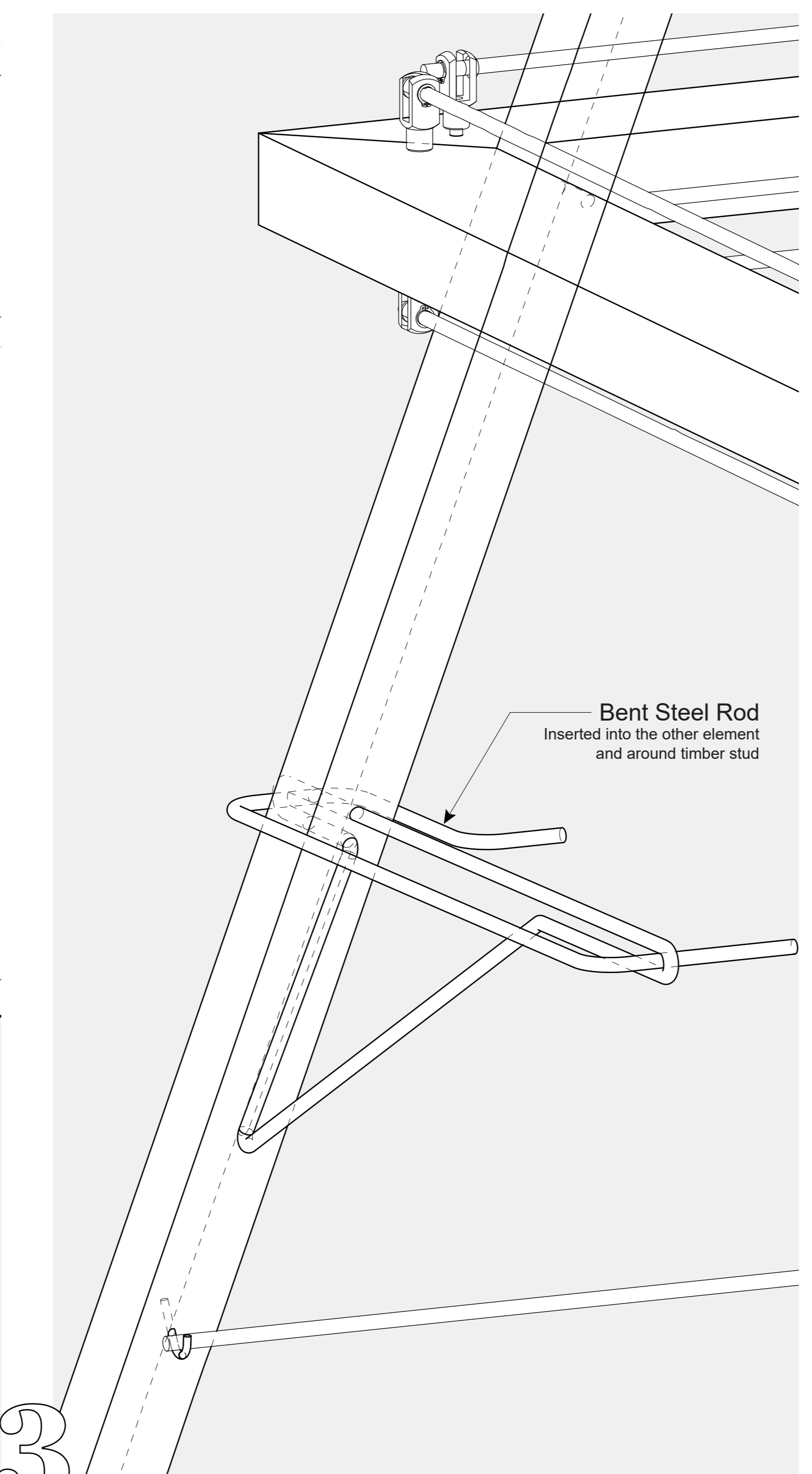
Detail C  
0 1 2 5CM



1

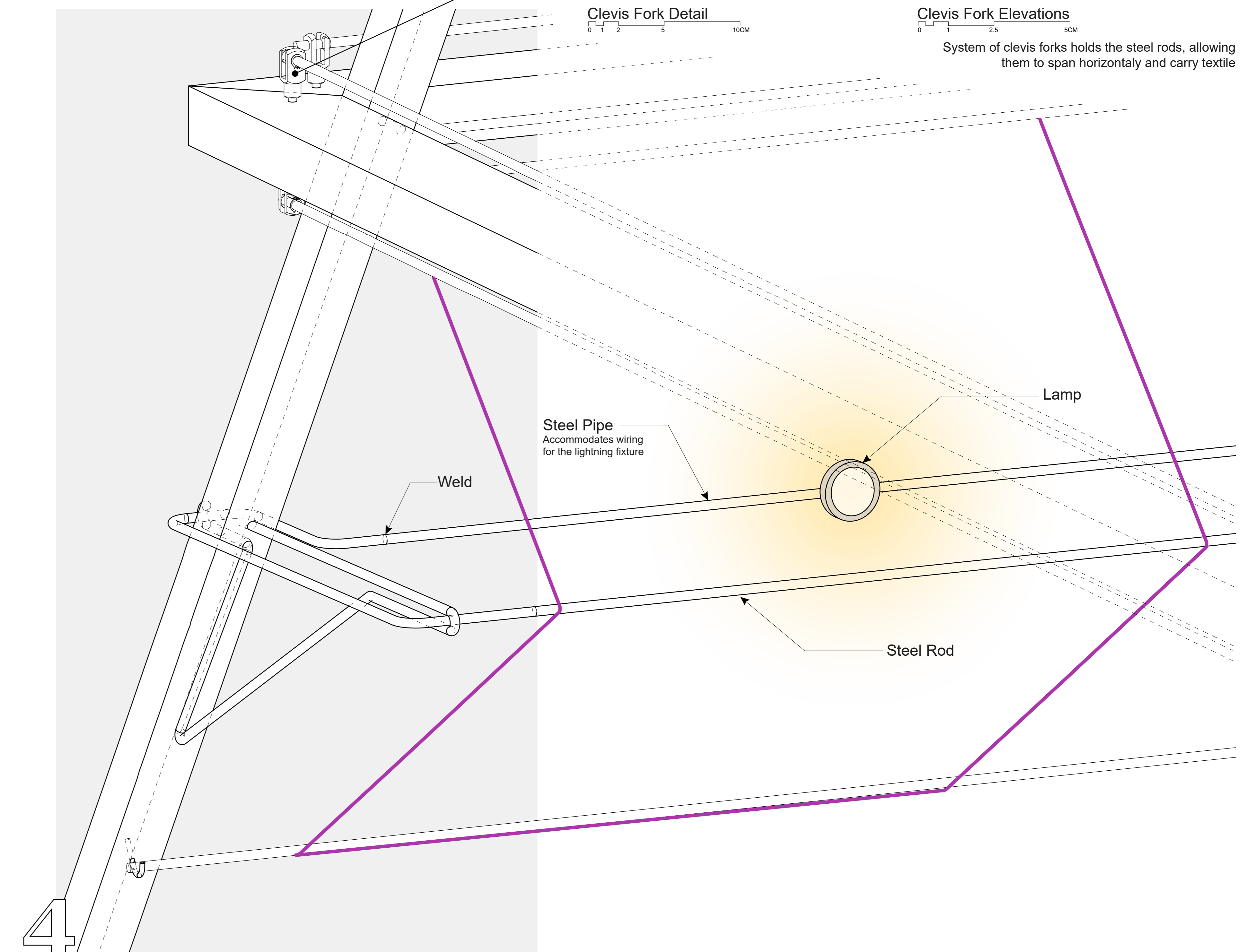


2



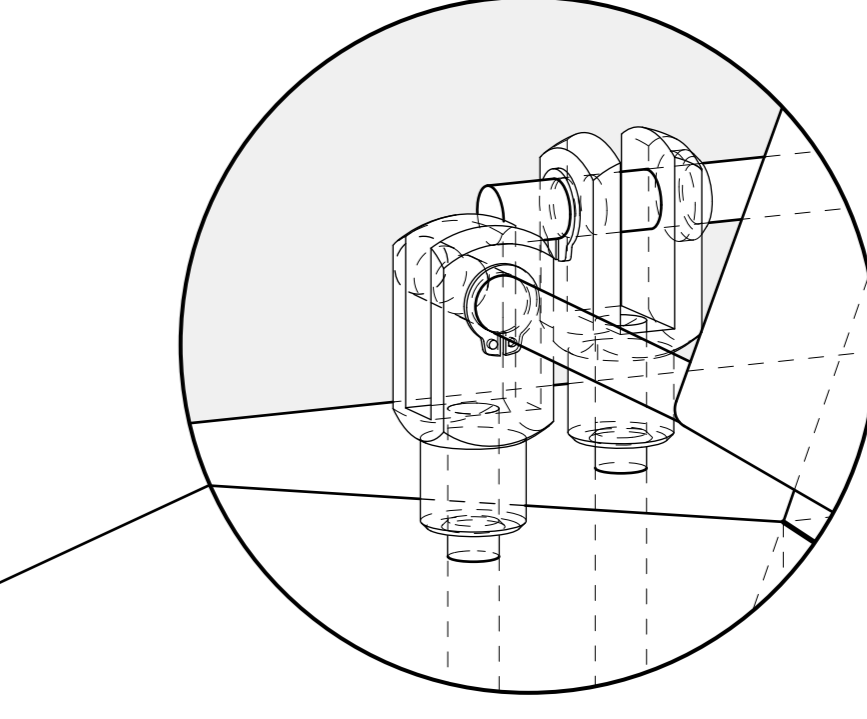
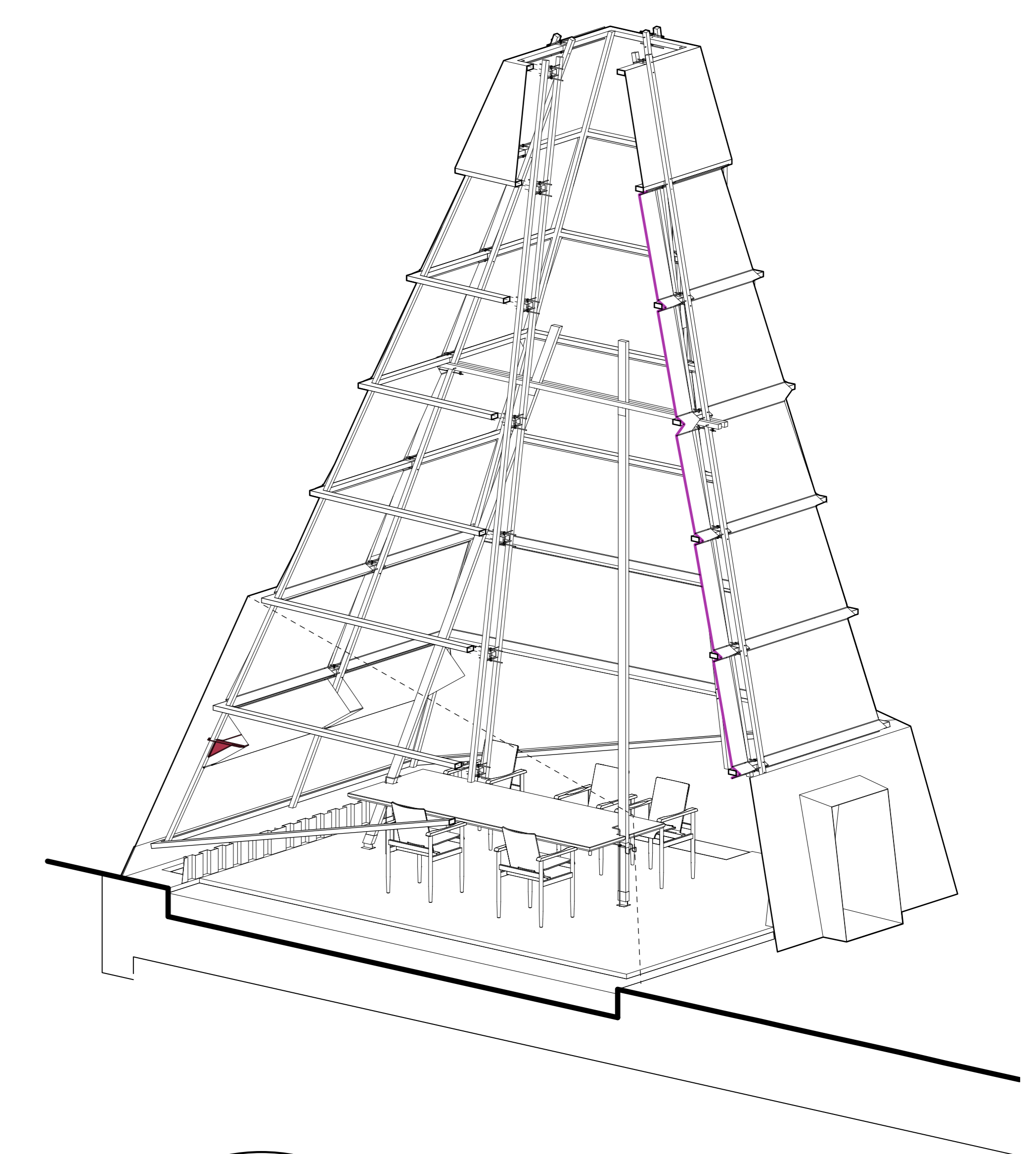
3

Assembly Diagram  
0 1 2 5 100CM

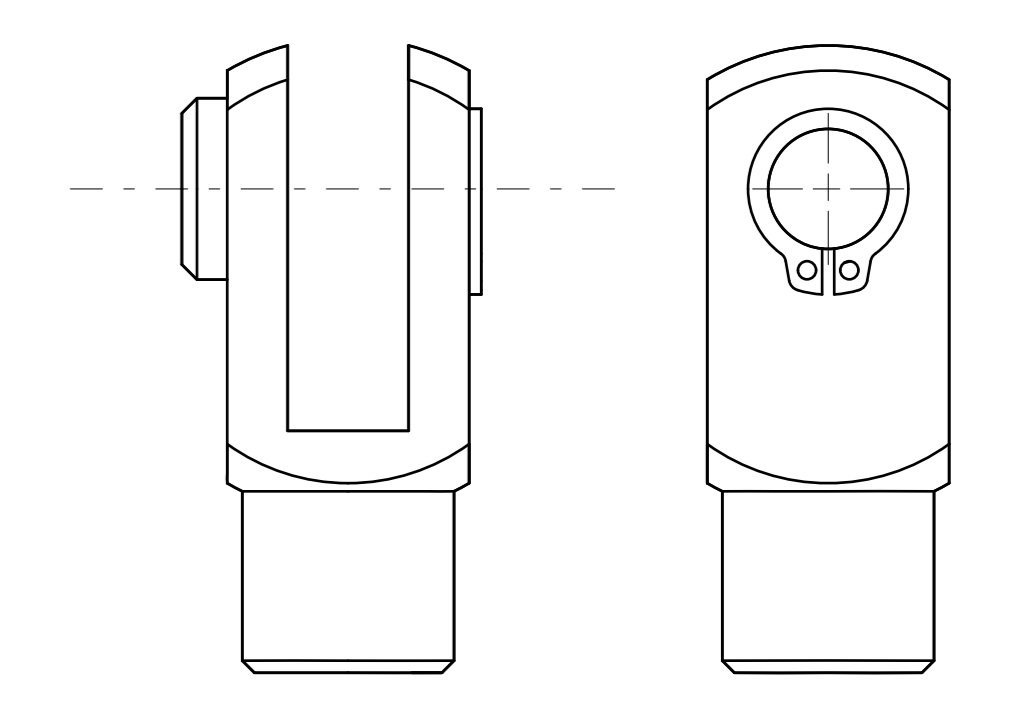


4

Lamp Detail  
0 1 2 5 100CM



Clevis Fork Detail  
0 1 2 5 100CM



Clevis Fork Elevations  
0 1 2 5 100CM  
System of clevis forks holds the steel rods, allowing them to span horizontally and carry textile

Four lamps are installed behind the fabric on the South side of the conference room in order to provide filtered artificial light

