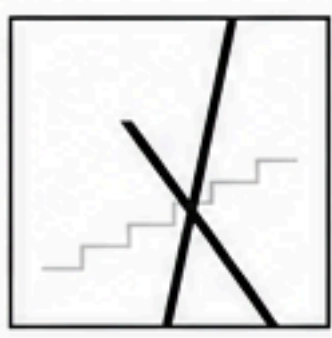




# ARSENAL MEMORY PARK

Urban Storytelling Through Memory





**CONCEPT DIAGRAM**

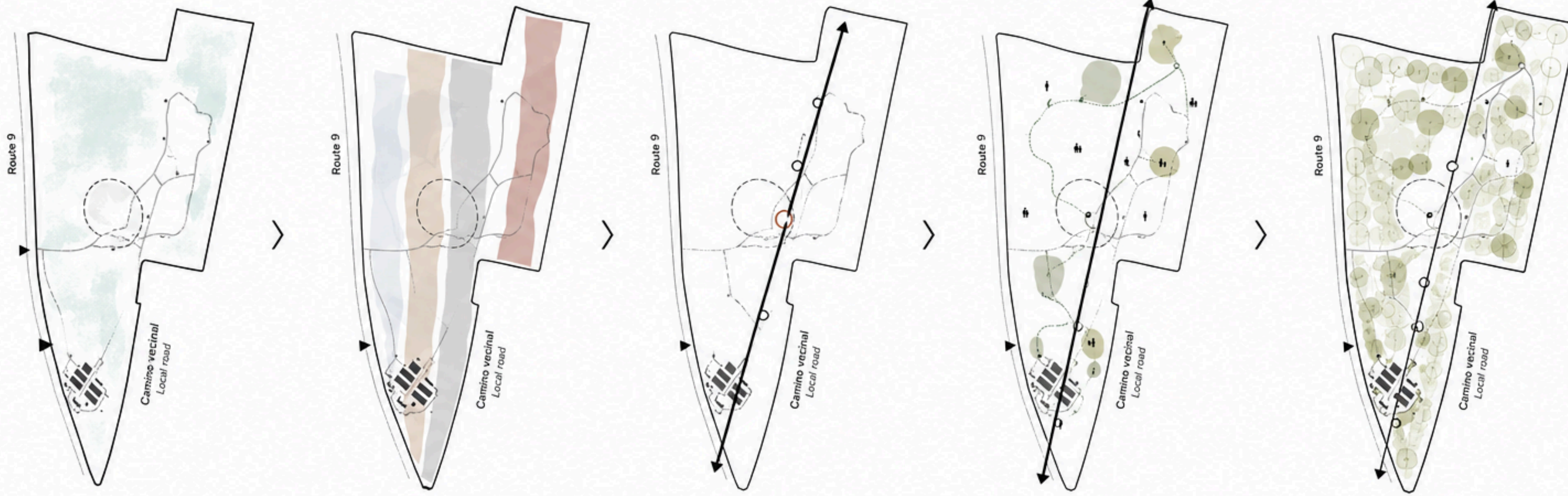
**1. MEMORY OF THE ARSENAL**  
The former military-industrial site is preserved as a collective memory.

**2. TIME & TRANSFORMATION**  
Historical layers are revealed through a sequence of spatial experiences.

**3. MEMORY AXIS**  
A continuous path connects past, present, and future.

**4. URBAN STORYTELLING**  
The park becomes an open narrative landscape where visitors discover history through movement.

**5. A LIVING MEMORY**  
A place of remembrance, reflection and connection for the city and its people.

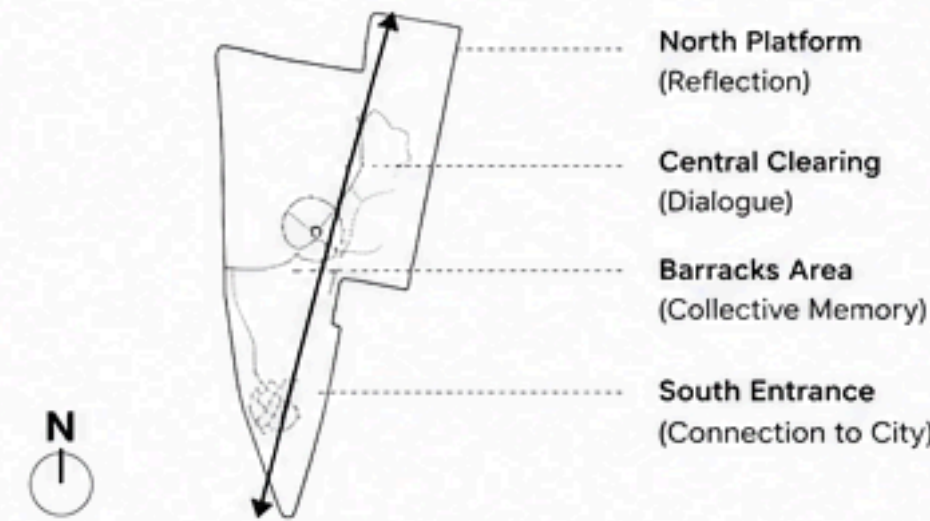


**DIAGRAM LEGEND**

- MEMORY AXIS
- - - EXISTING PATHS
- DIALOGUE POINTS (PAST - FUTURE)
- HISTORICAL LAYERS
- NARRATIVE LANDSCAPE
- ▶ ACCESS POINTS

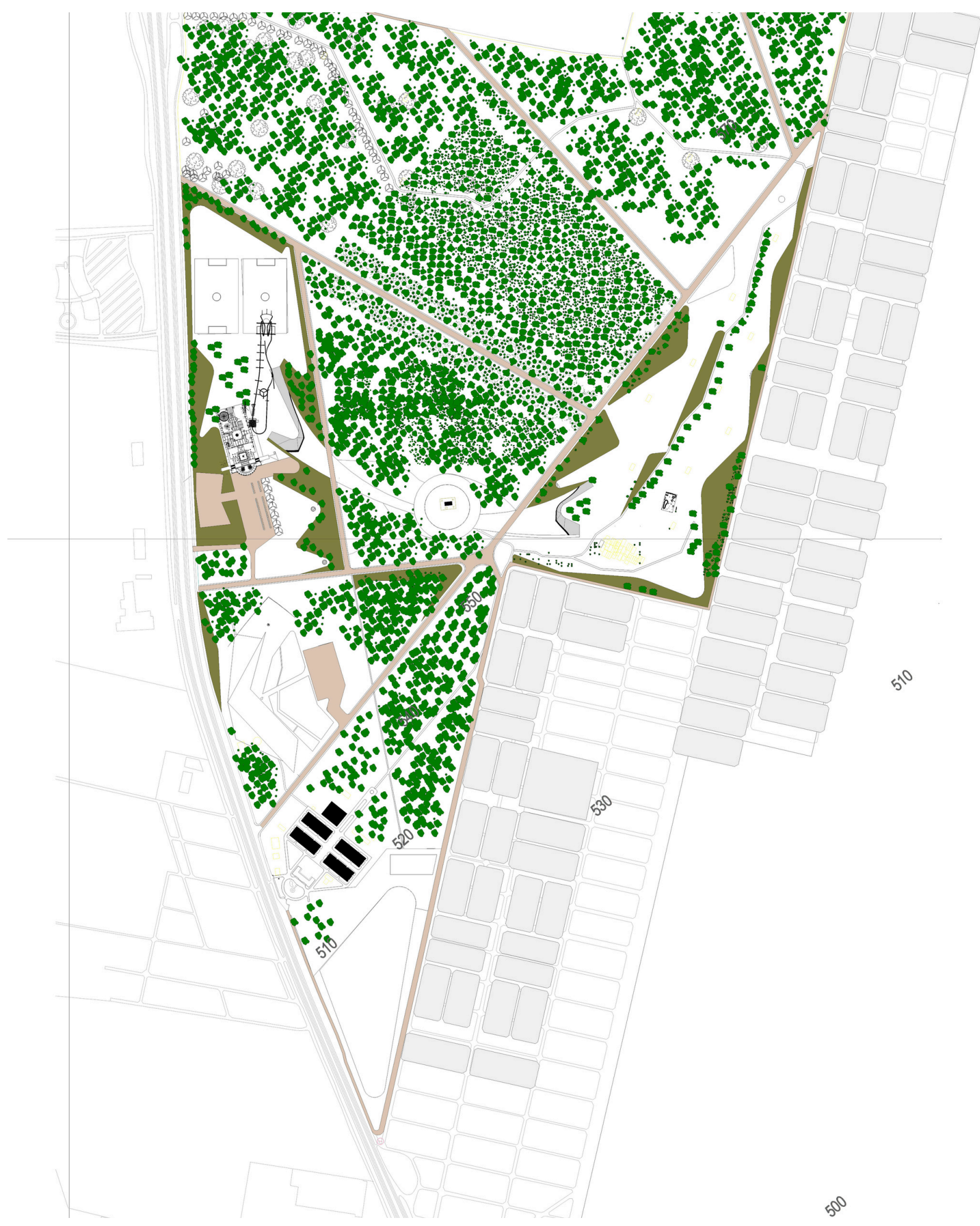
**CONCEPT**

Arsenal Memory Park transforms a former military-industrial site into a narrative landscape. Through a memory axis crossing historical layers, visitors experience the site's transformation from conflict to collective remembrance, creating a continuous dialogue between past, present, and future.

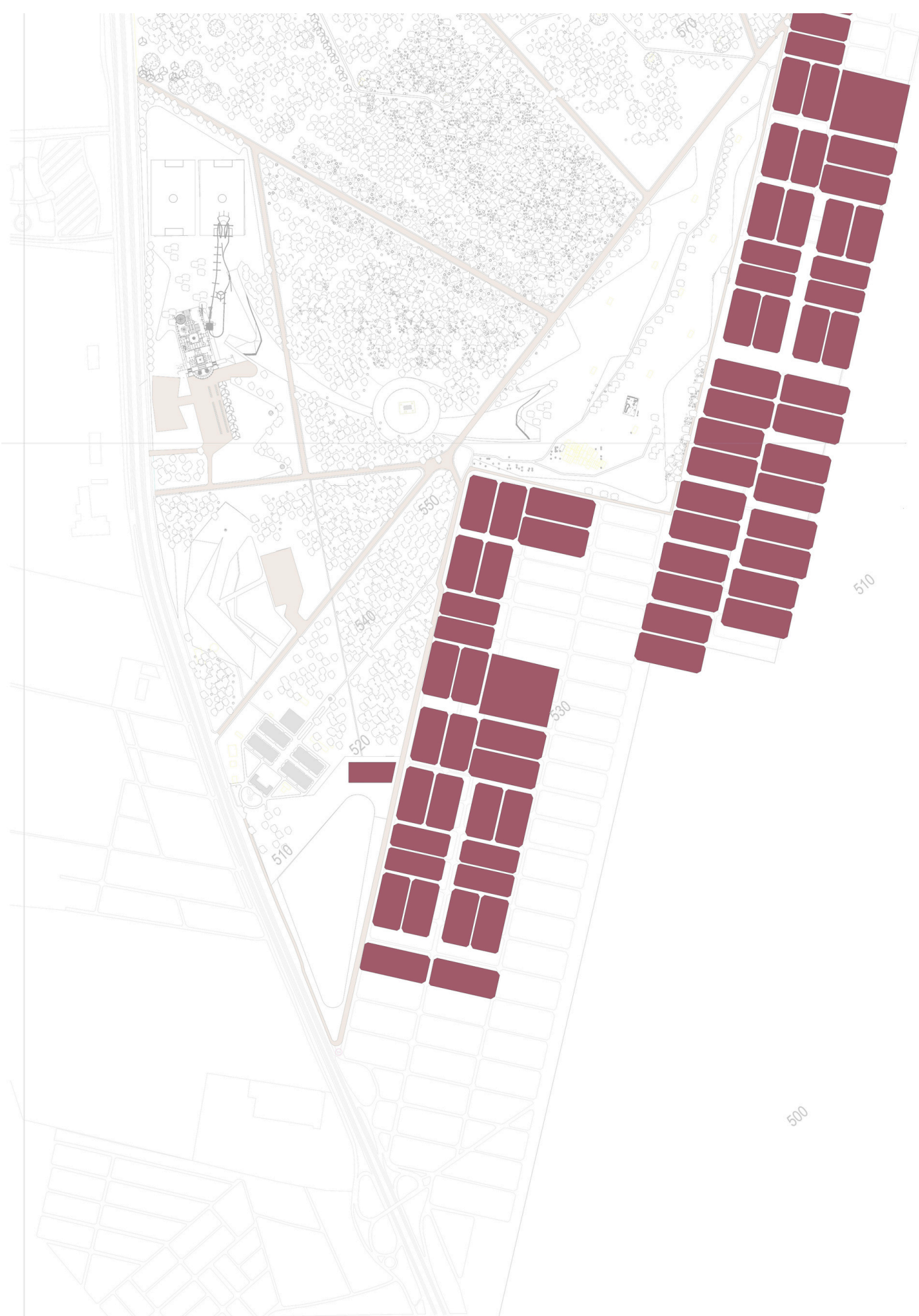


"The project is conceived as a journey through memory. Movement across the site becomes an act of discovery, where visitors encounter moments of reflection, gathering, and contemplation. Landscape, architecture, and narrative are woven together to create a meaningful spatial experience."

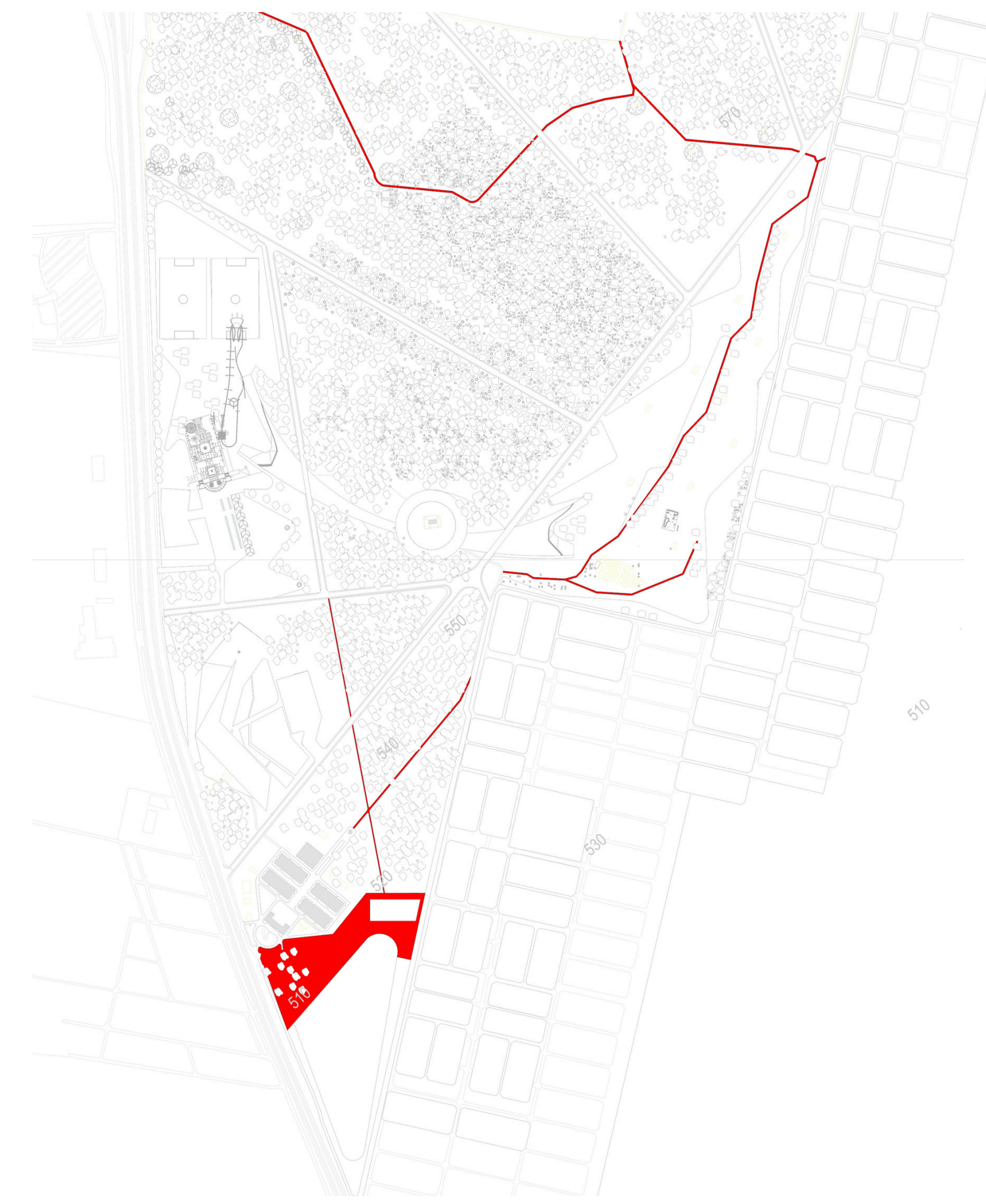




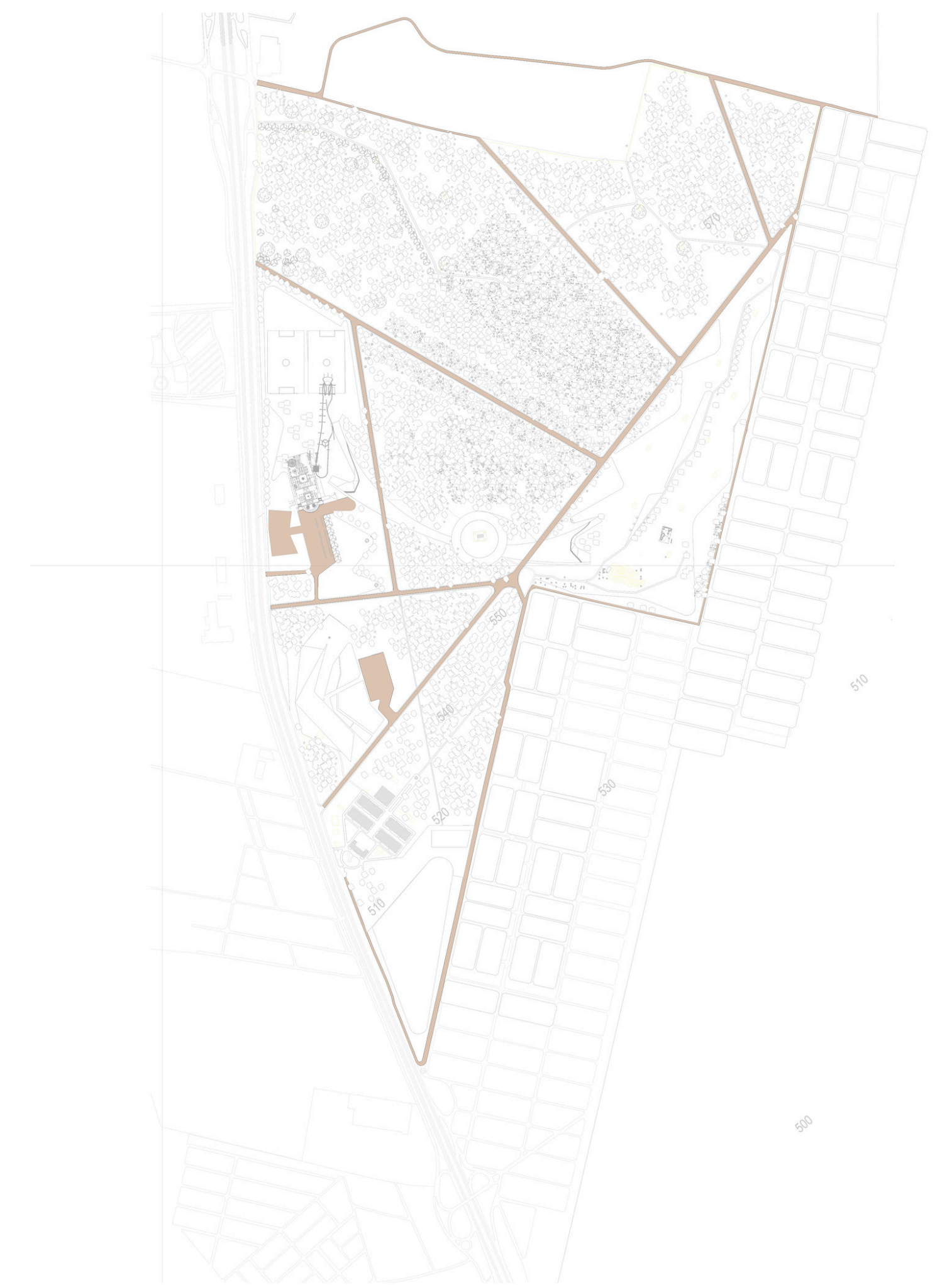
Native vegetation, shaded promenades, ecological restoration areas, and open civic spaces establish a resilient landscape that balances environmental performance with memorial expression.



Native vegetation, shaded promenades, ecological restoration areas, and open civic spaces establish a resilient landscape that balances environmental performance with memorial expression.



Native vegetation, shaded promenades, ecological restoration areas, and open civic spaces establish a resilient landscape that balances environmental performance with memorial expression.



Native vegetation, shaded promenades, ecological restoration areas, and open civic spaces establish a resilient landscape that balances environmental performance with memorial expression.



Native vegetation, shaded promenades, ecological restoration areas, and open civic spaces establish a resilient landscape that balances environmental performance with memorial expression.



Arsenal Memory Park reimagines a site marked by historical trauma as a landscape of collective memory and civic renewal. Through the integration of memorial spaces, ecological restoration, and public programs, the project transforms remembrance into a living and shared experience. The park preserves the memory of the past while creating opportunities for dialogue, learning, and community life for future generations.





