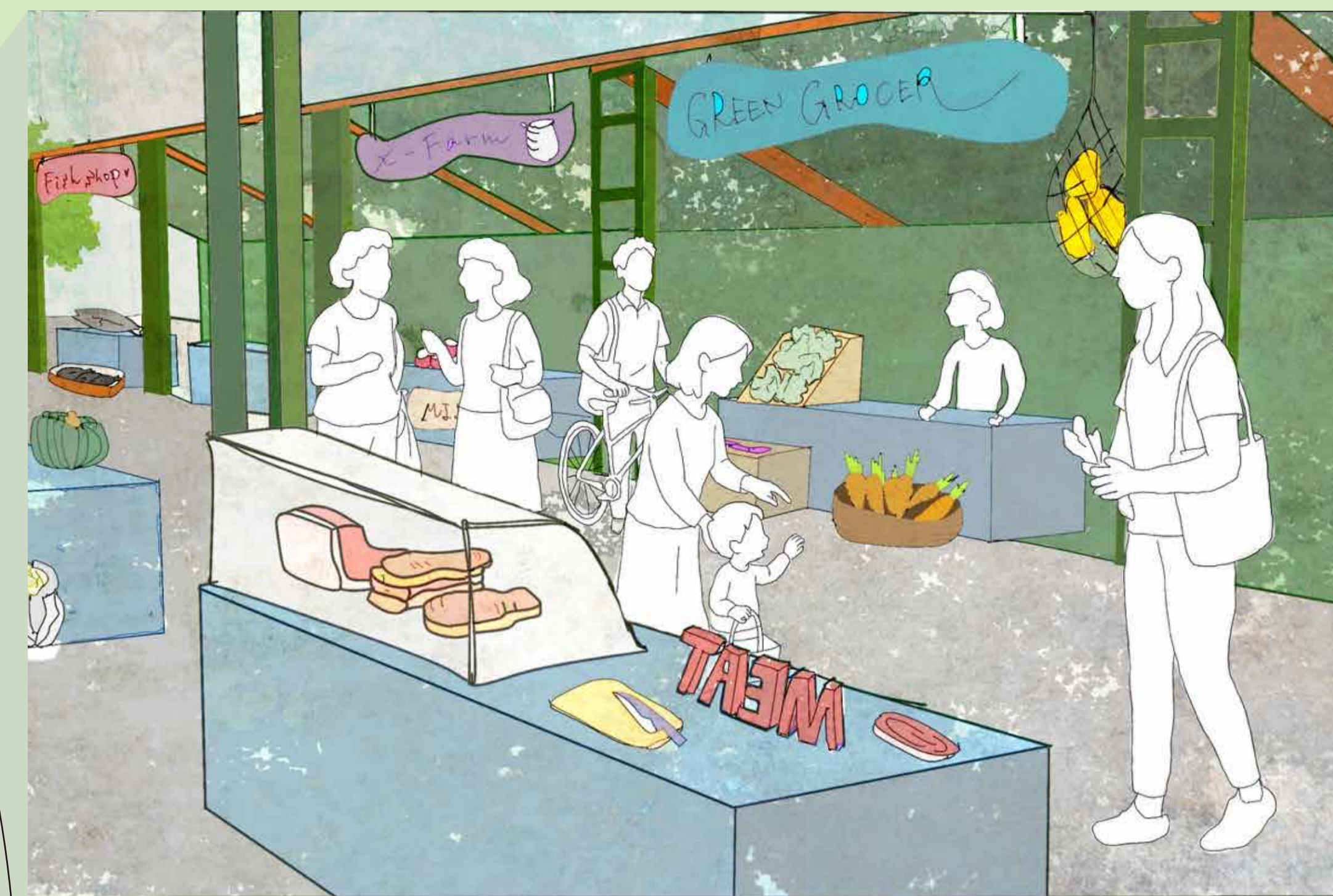


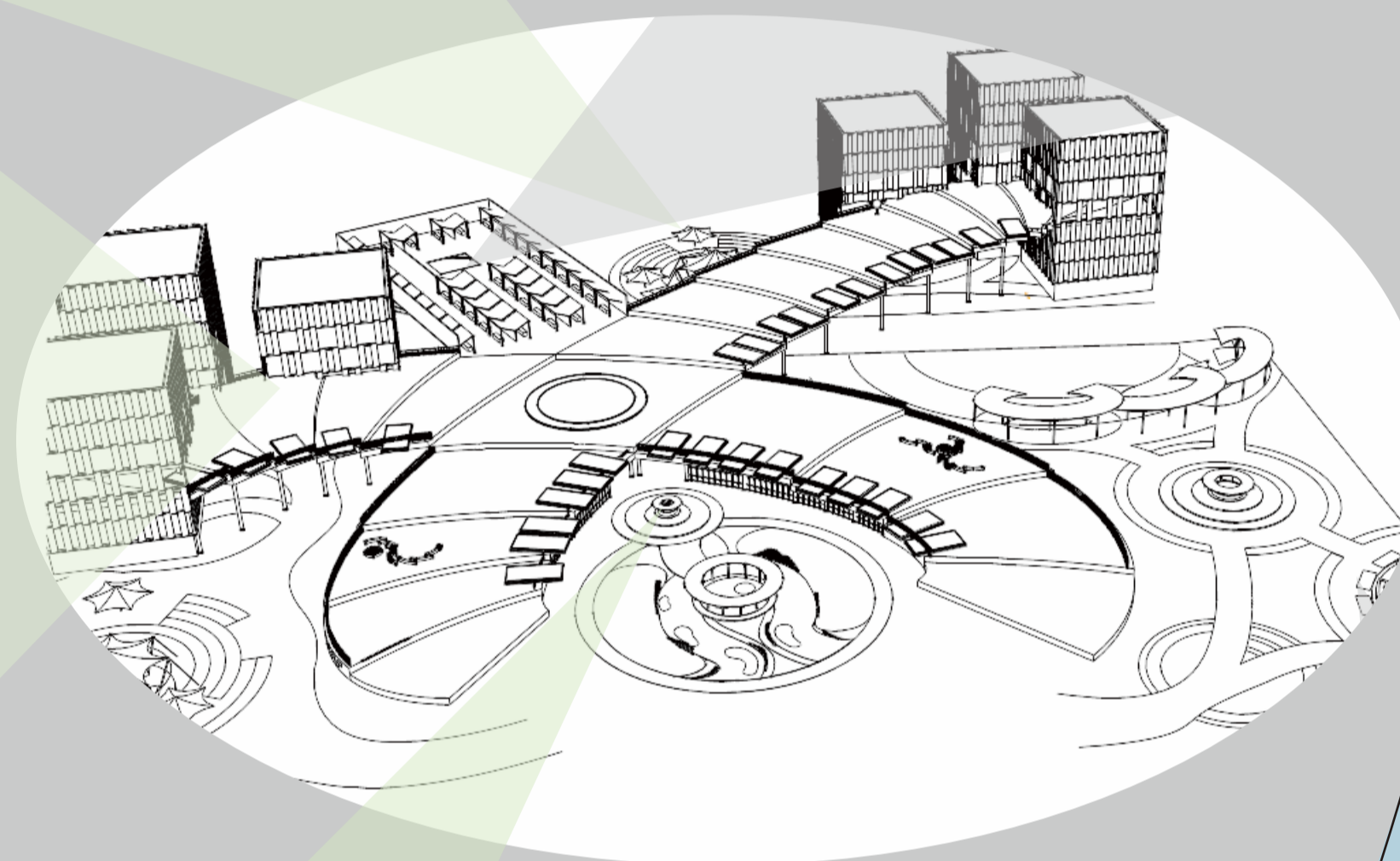
Live Kitchen

By incorporating a live kitchen into the facility, visitors can continuously experience the food cycle of "production → cooking → consumption" within a single place. After observing vegetables growing in the fields, visitors can watch the ingredients being prepared and cooked in the live kitchen before ultimately enjoying the food themselves. This allows them to experience the entire process through all five senses. The live kitchen also serves an educational purpose by providing opportunities to learn about cooking techniques and food ingredients. Furthermore, the close proximity between chefs and visitors encourages communication, transforming dining from a simple act into a form of entertainment and learning. Cooking seasonal ingredients harvested directly from the fields enhances the sense of locality and seasonality, creating an attractive space that makes effective use of regional resources.



Market

The market serves as a place where producers and consumers can connect directly, allowing visitors to select fresh, safe, and reliable food products. Fresh vegetables, fruits, livestock products, and seafood from across Aichi Prefecture are available, enabling visitors to experience seasonal products and regional characteristics. The market creates a lively atmosphere every day. By learning about the producers and the stories behind the products, visitors develop a greater interest in food, transforming shopping into an opportunity for learning and discovery. The market was designed with the belief that it can also play an important role in revitalizing the local community.

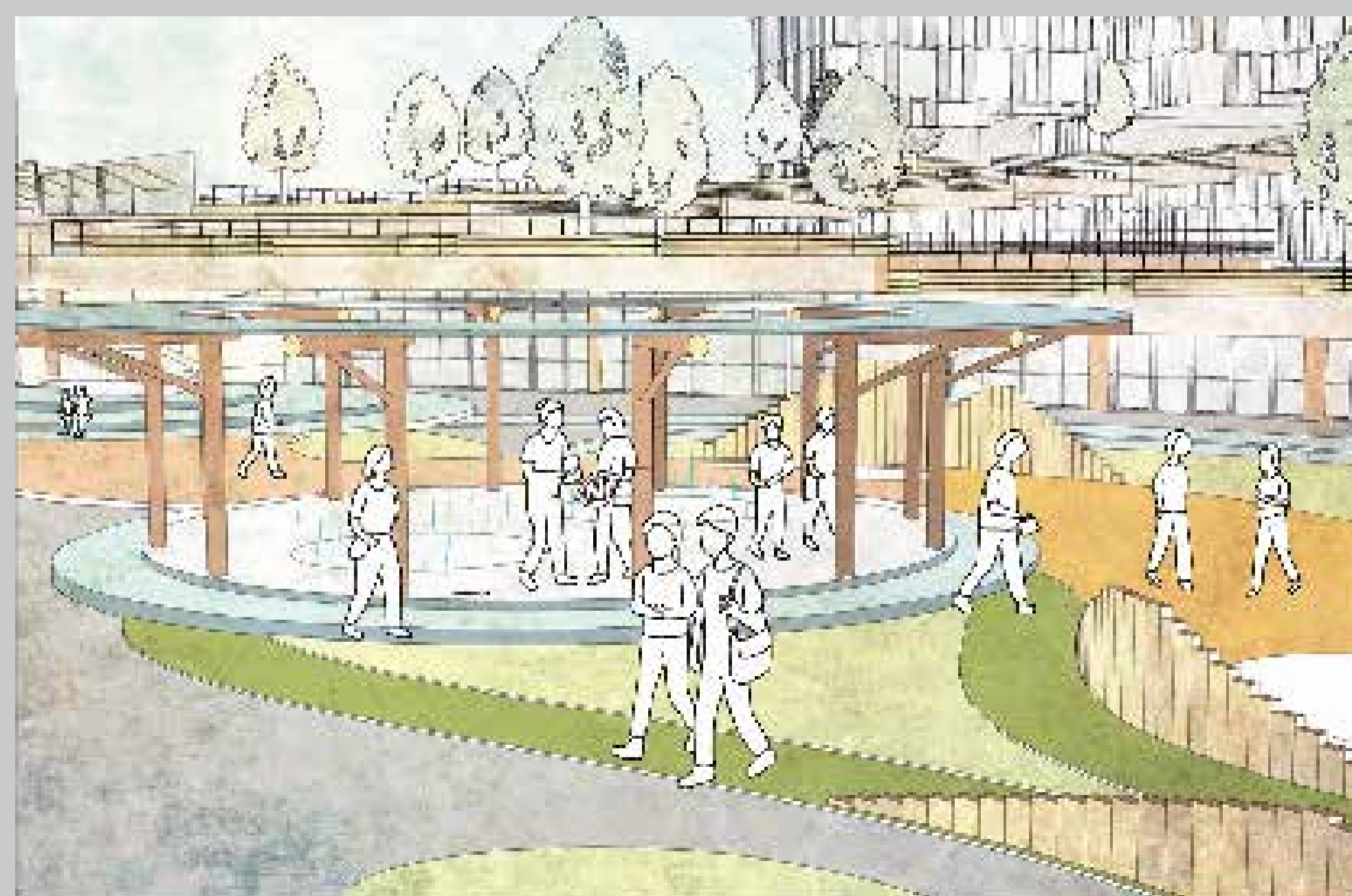
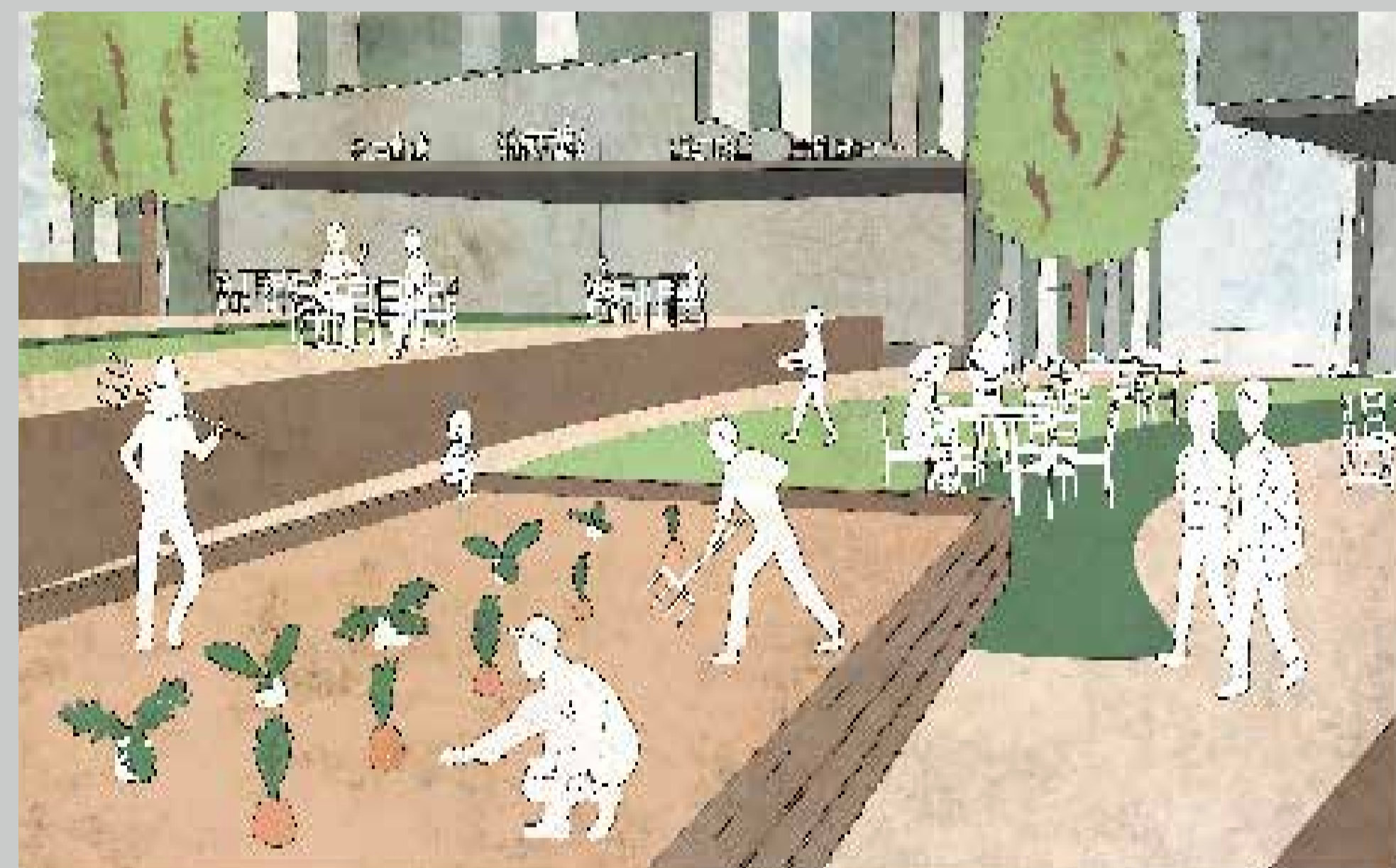


Food Truck Zone

To the right of the station exit, a food truck zone is designed to bring energy and vibrancy to the area. The space can be easily used by office workers as well as passersby. Because vendors change according to the season and special events, visitors can enjoy a different experience each time they visit. In collaboration with the market, the food trucks offer menus featuring agricultural products from Aichi Prefecture, providing opportunities to enjoy the appeal of local ingredients on the spot.

Agriculture

By allowing consumers to visually understand where their food is grown, their understanding of production deepens, fostering awareness and gratitude towards food. Furthermore, seeing "who made it, where, and how" creates a sense of security and trust, encouraging empathy for local production and consumption and sustainable food. In addition, by establishing farms in the heart of the city near train stations, agricultural landscapes are incorporated into urban life, proposing new relationships and lifestyle possibilities between urban and agricultural areas.



Plaza

A plaza located near the facilities creates an open space that strengthens connections within the local community. Positioned along the main circulation route from the station, the plaza attracts pedestrian activity and provides a place for people to stay, interact, and gather. It can also accommodate events such as harvest festivals and workshops. Working together with the agricultural fields and live kitchen, the plaza serves as a space for sharing, in addition to production, cooking, and consumption.